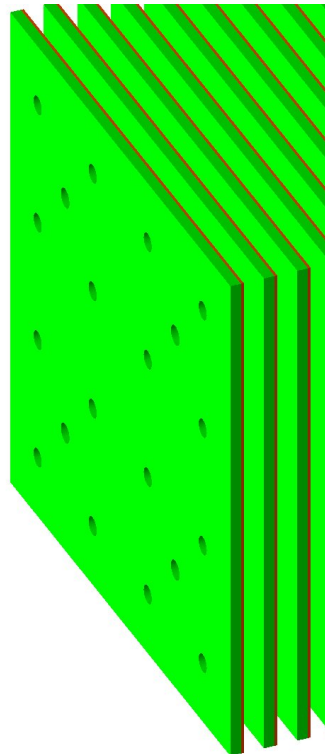
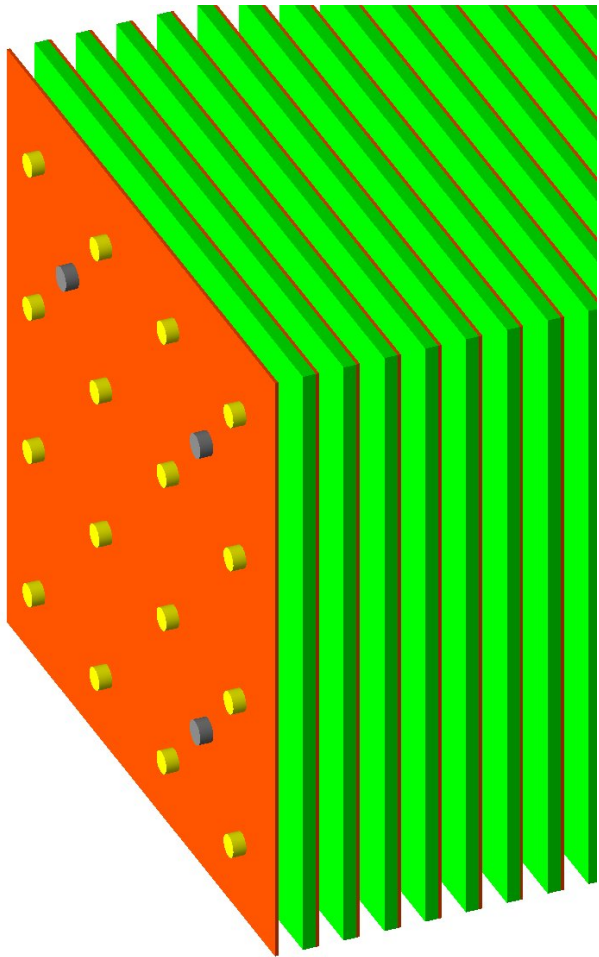
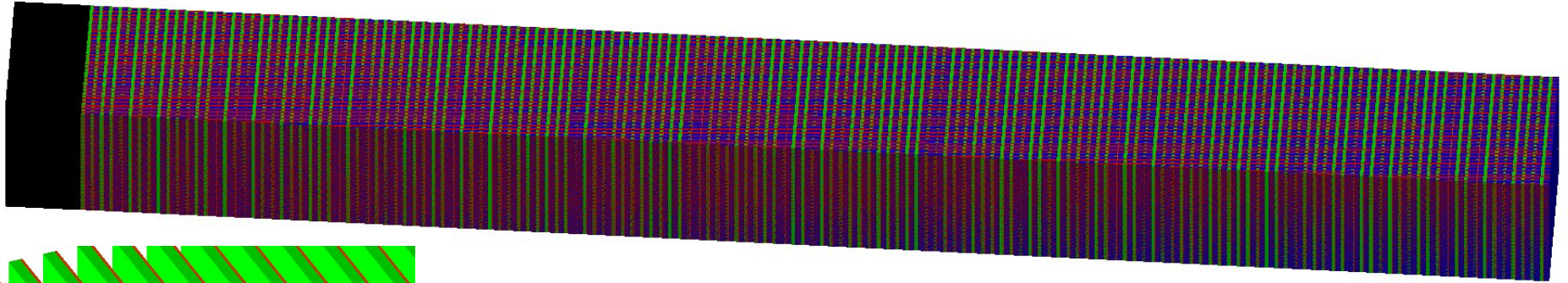
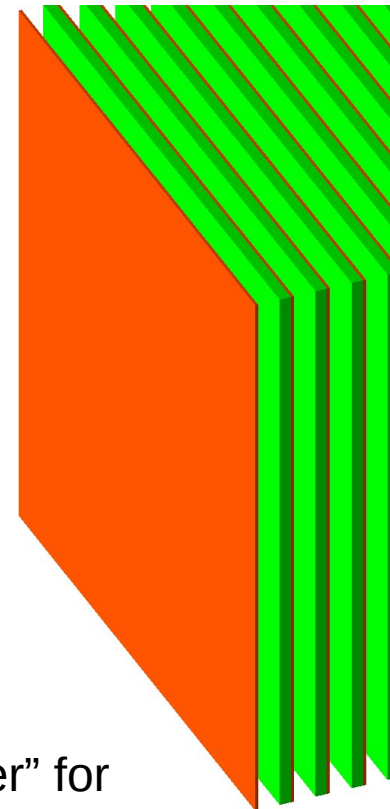


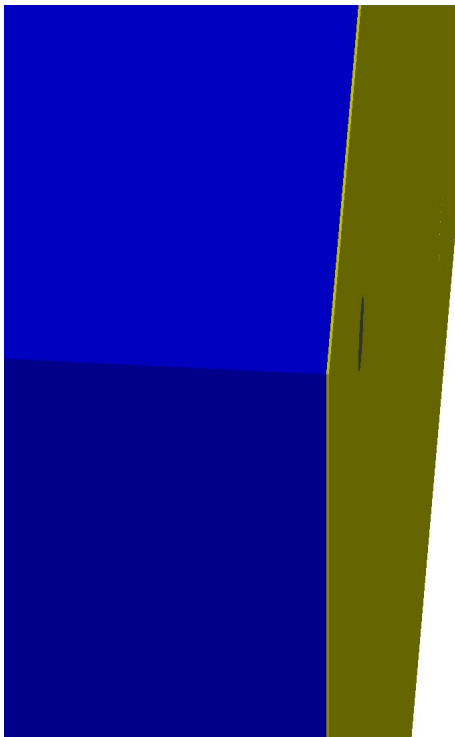
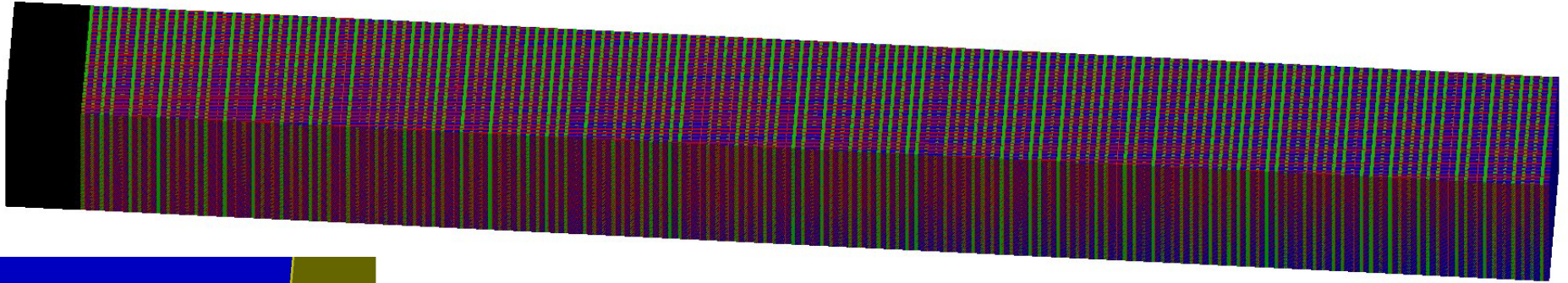
# ECAL2 Overlaps in Shashlik Cell



No holes in "paper" for rods and fibers



# ECAL2 Overlaps in Shashlik Cell



Inner volume (yellow)  
outside mother (blue)

Both fixed: [https://gitlab.cern.ch/compass/mc\\_tools/TGEANT/-/merge\\_requests/21](https://gitlab.cern.ch/compass/mc_tools/TGEANT/-/merge_requests/21)