



# Organising CERN events in CERN Science Gateway Campus

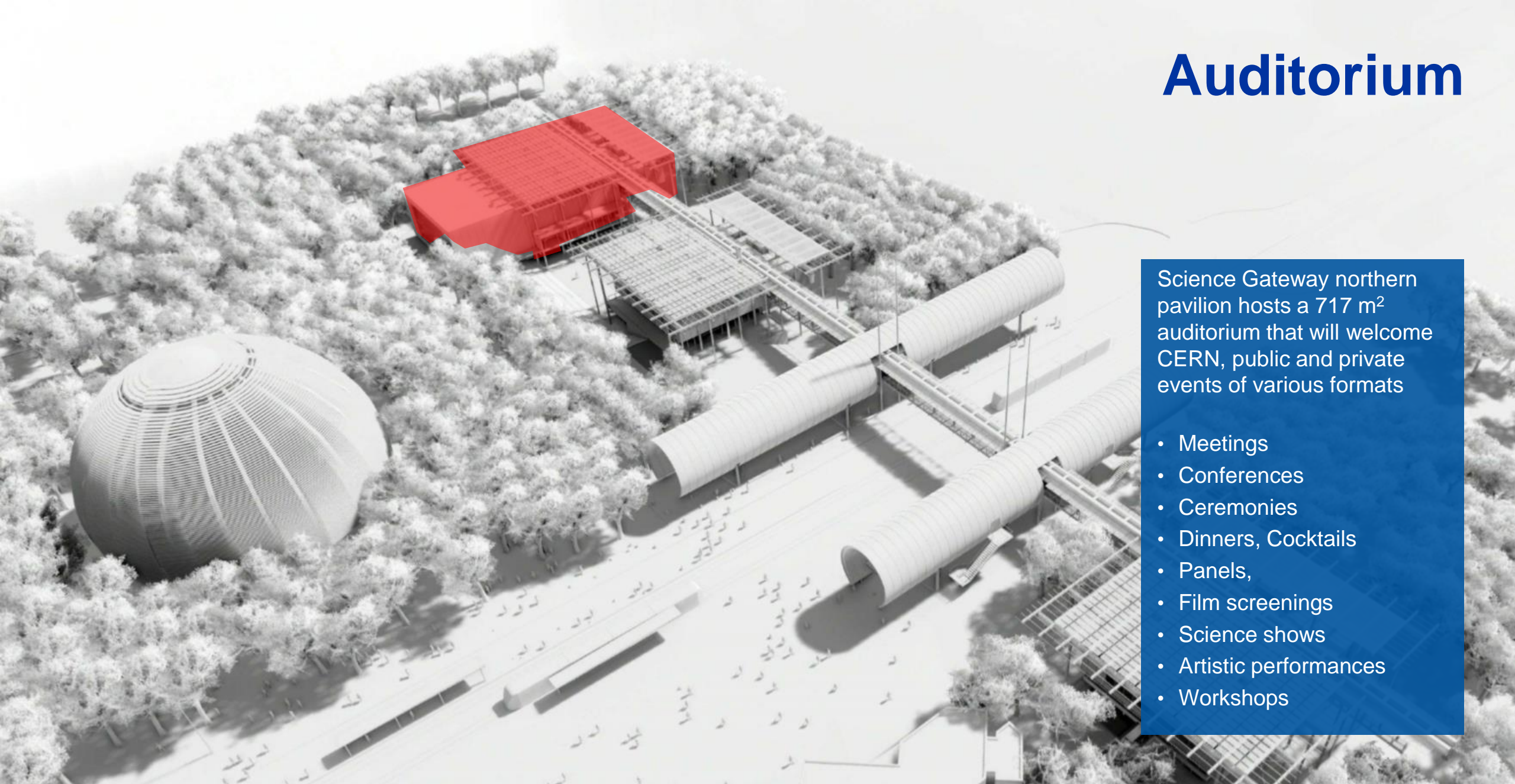
Loraine Massarotti, François Briard – Visitors and Events Operations

March 2021

# Agenda

- **Spaces available in Science Gateway campus for the organization of events**
- **Categories of activities**
- **Strengths and weaknesses**
- **Project timeline**
- **The team**
- **Your input**

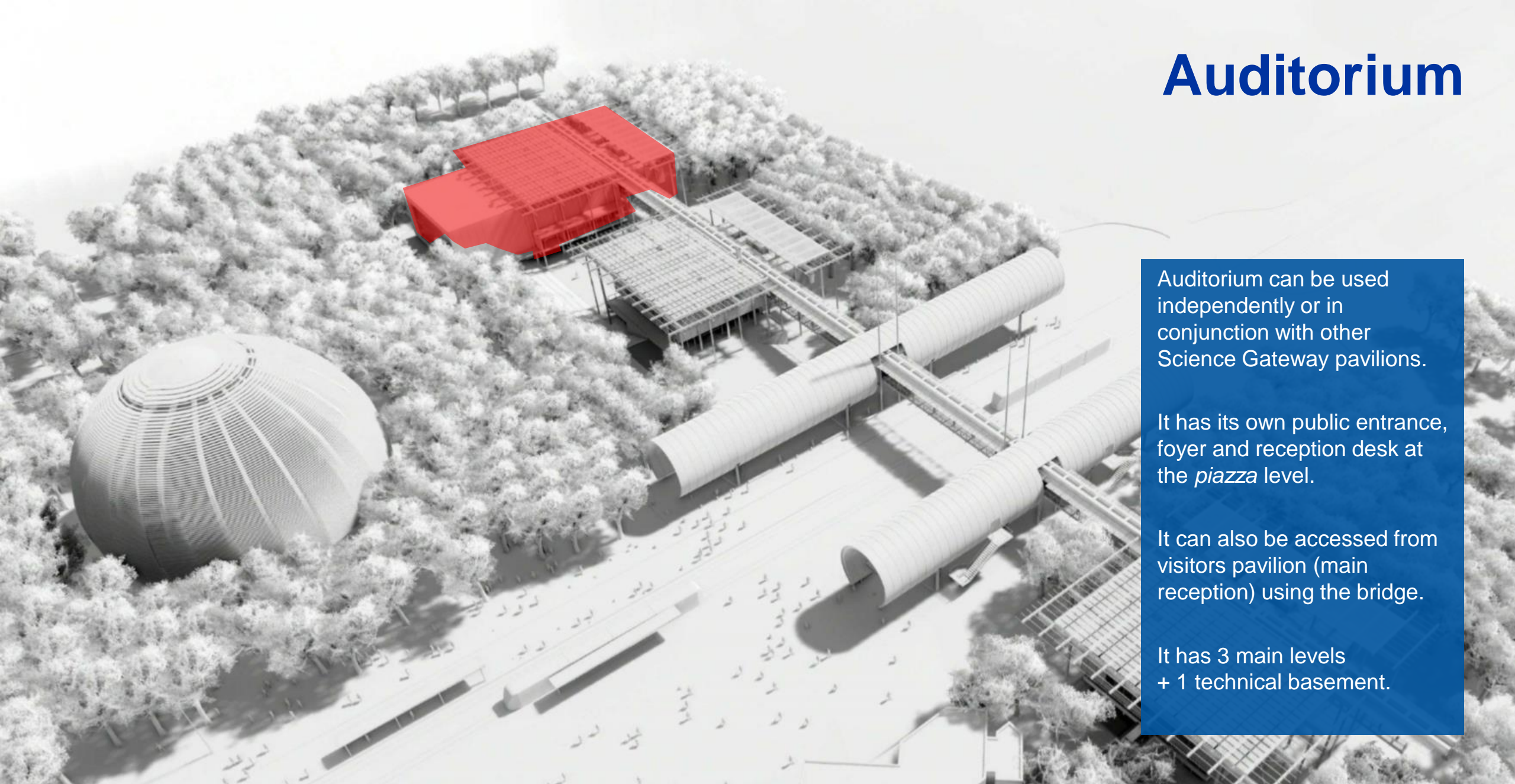
# Auditorium



Science Gateway northern pavilion hosts a 717 m<sup>2</sup> auditorium that will welcome CERN, public and private events of various formats

- Meetings
- Conferences
- Ceremonies
- Dinners, Cocktails
- Panels,
- Film screenings
- Science shows
- Artistic performances
- Workshops

# Auditorium



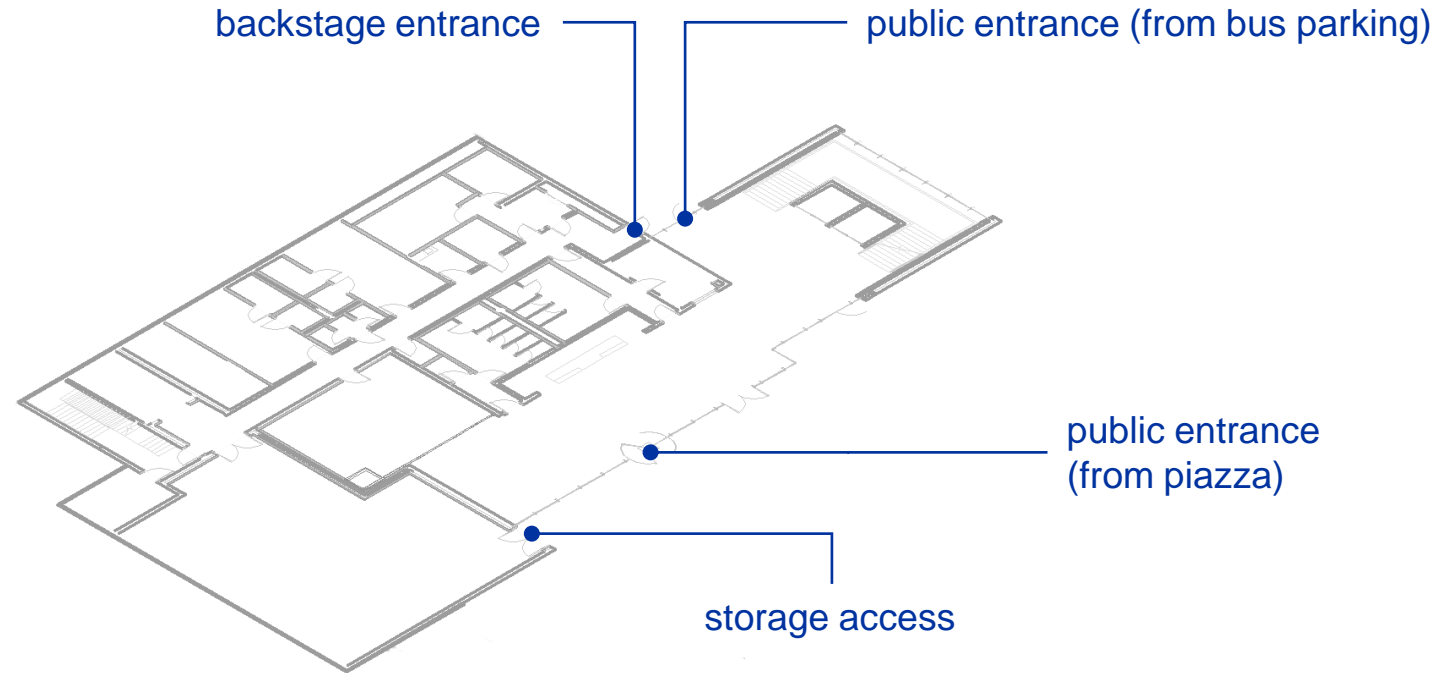
Auditorium can be used independently or in conjunction with other Science Gateway pavilions.

It has its own public entrance, foyer and reception desk at the *piazza* level.

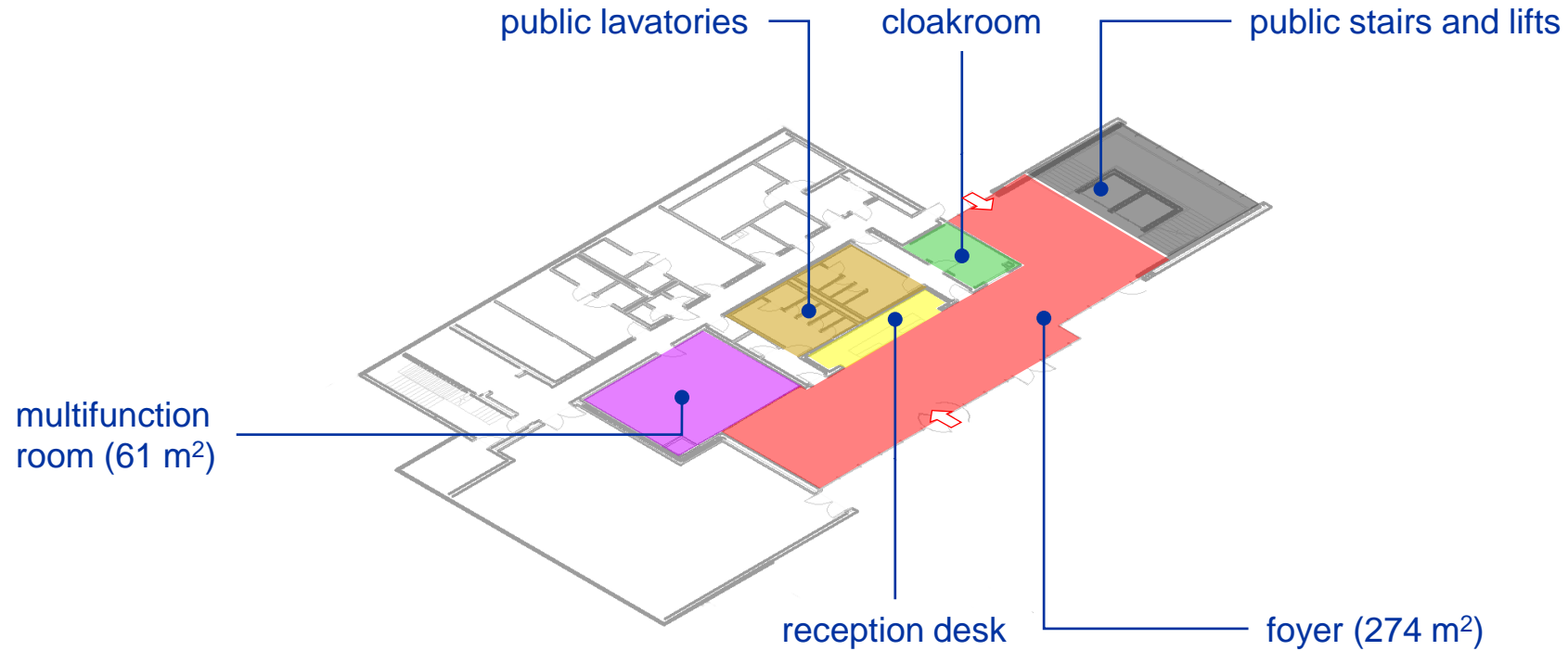
It can also be accessed from visitors pavilion (main reception) using the bridge.

It has 3 main levels + 1 technical basement.

# Auditorium – level -1 (*piazza*)



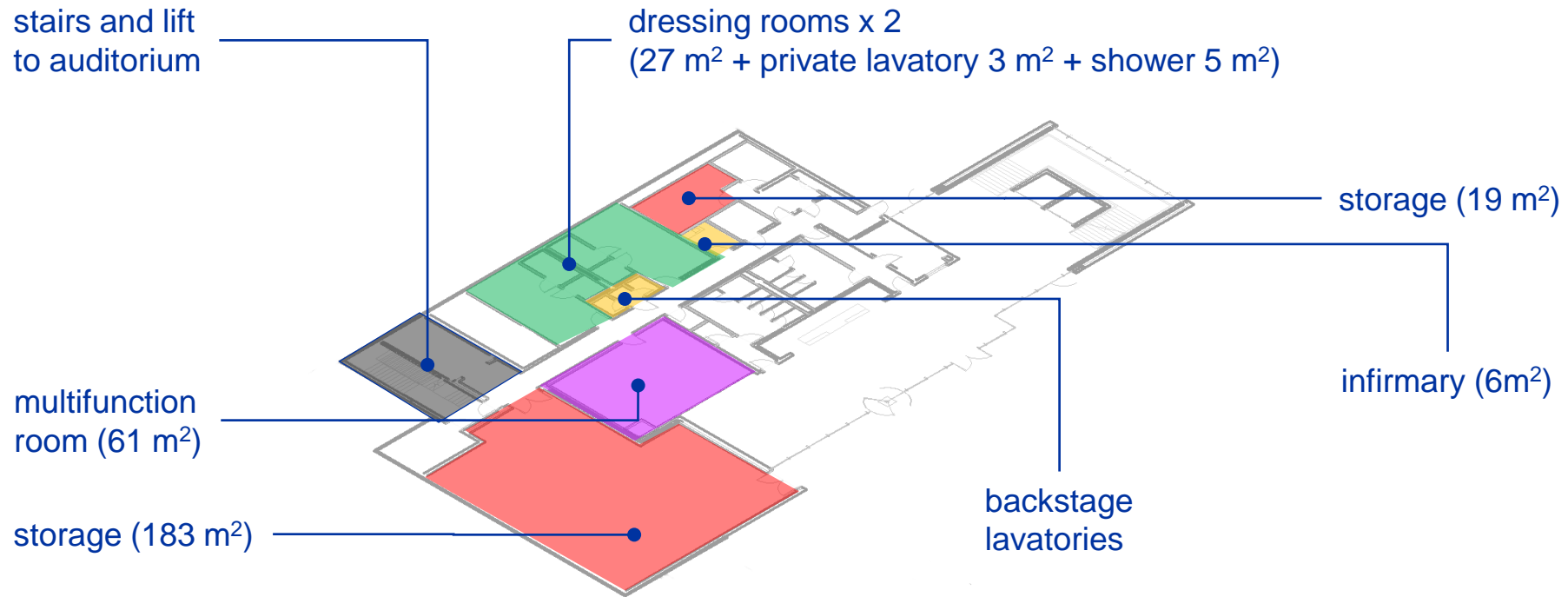
# Auditorium – level -1 (*piazza*)





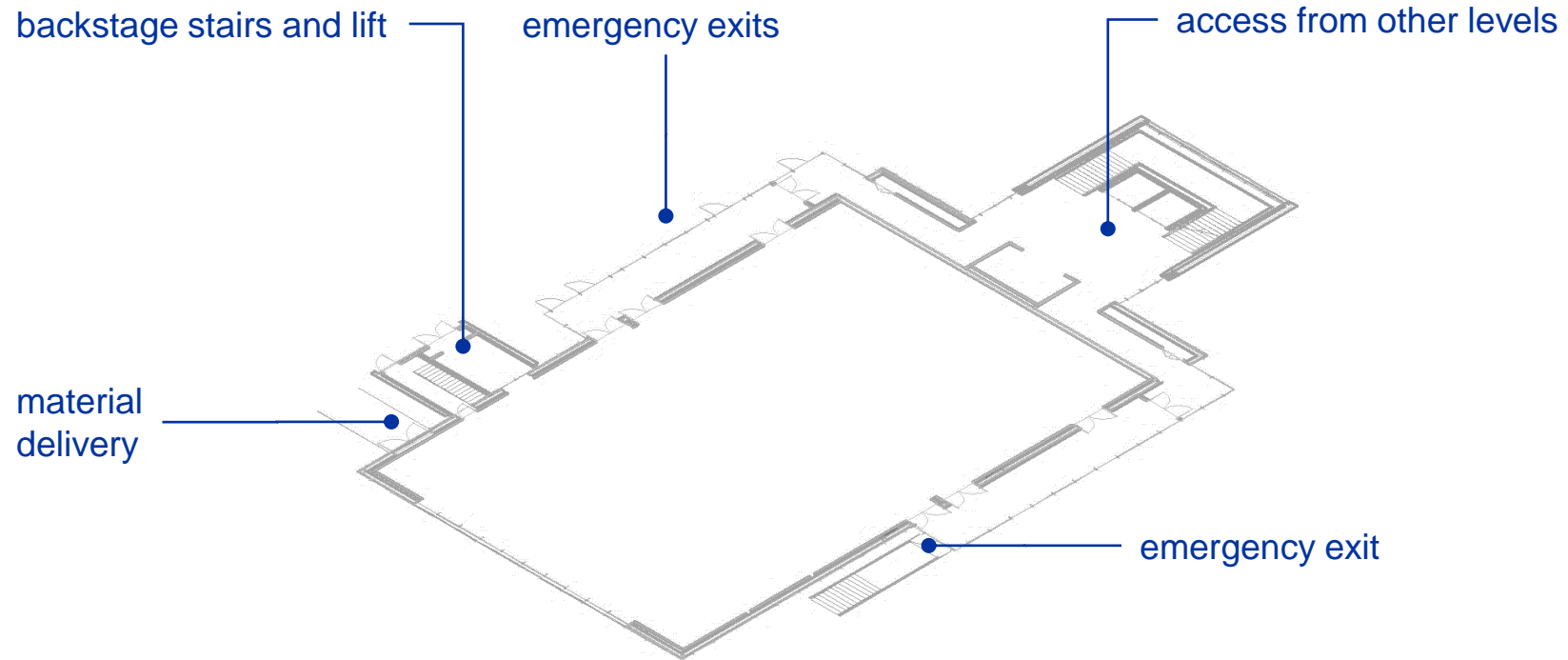
# Auditorium lower foyer

# Auditorium – level -1 (*piazza*)

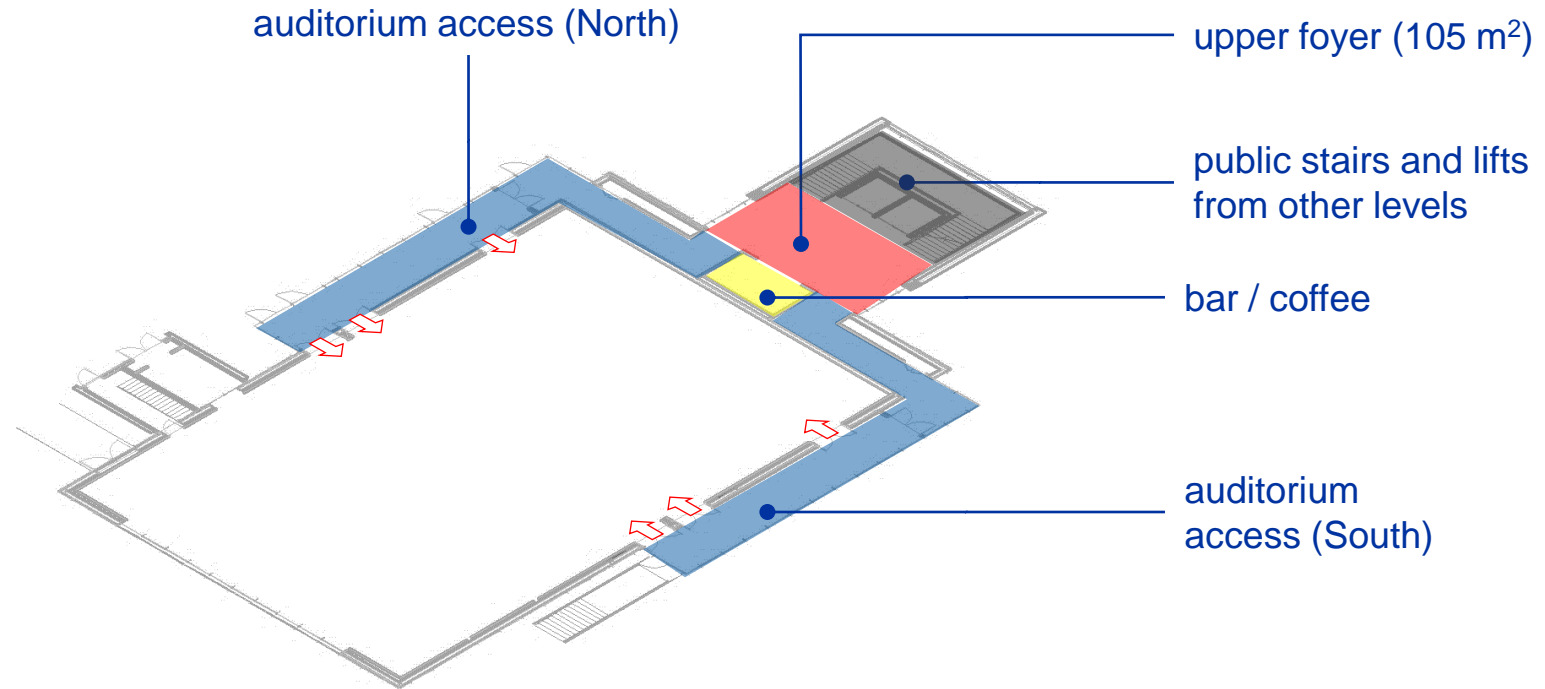


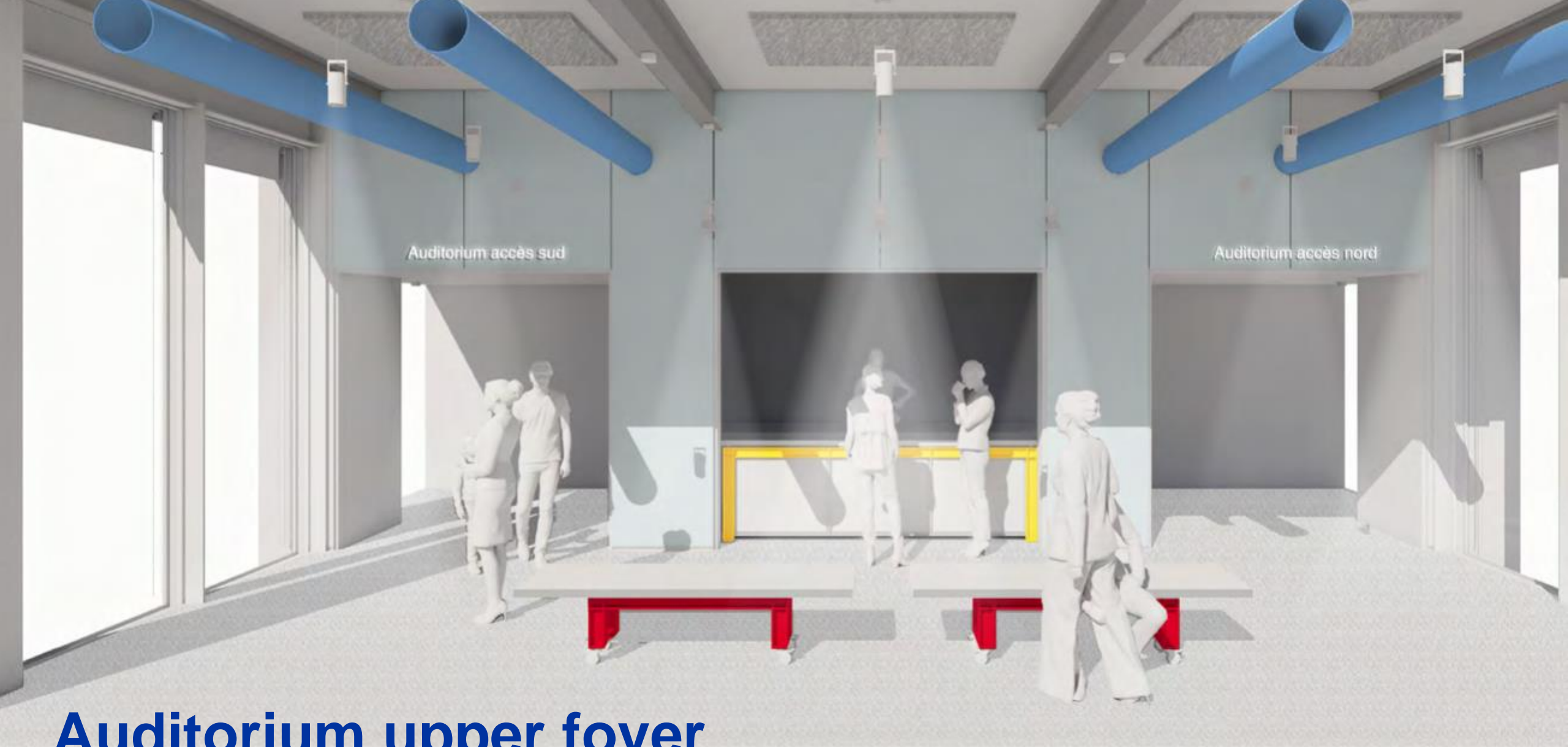


# Auditorium – level 0



# Auditorium – level 0





Auditorium accès sud

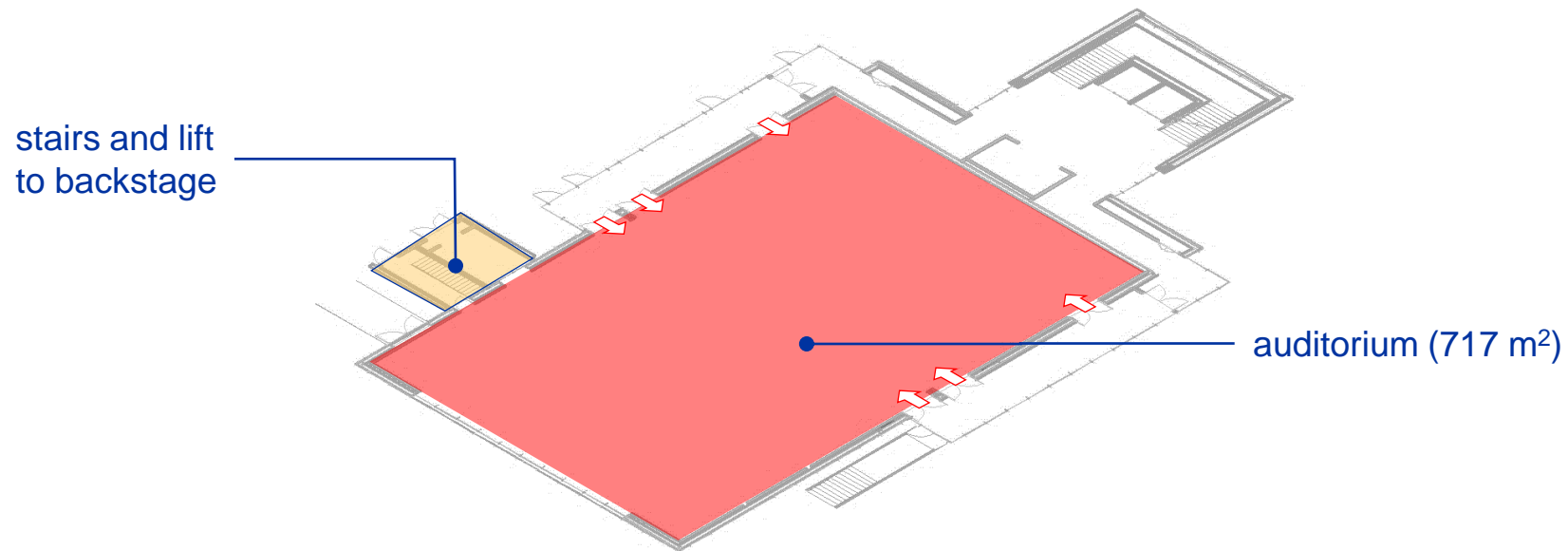
Auditorium accès nord

## Auditorium upper foyer

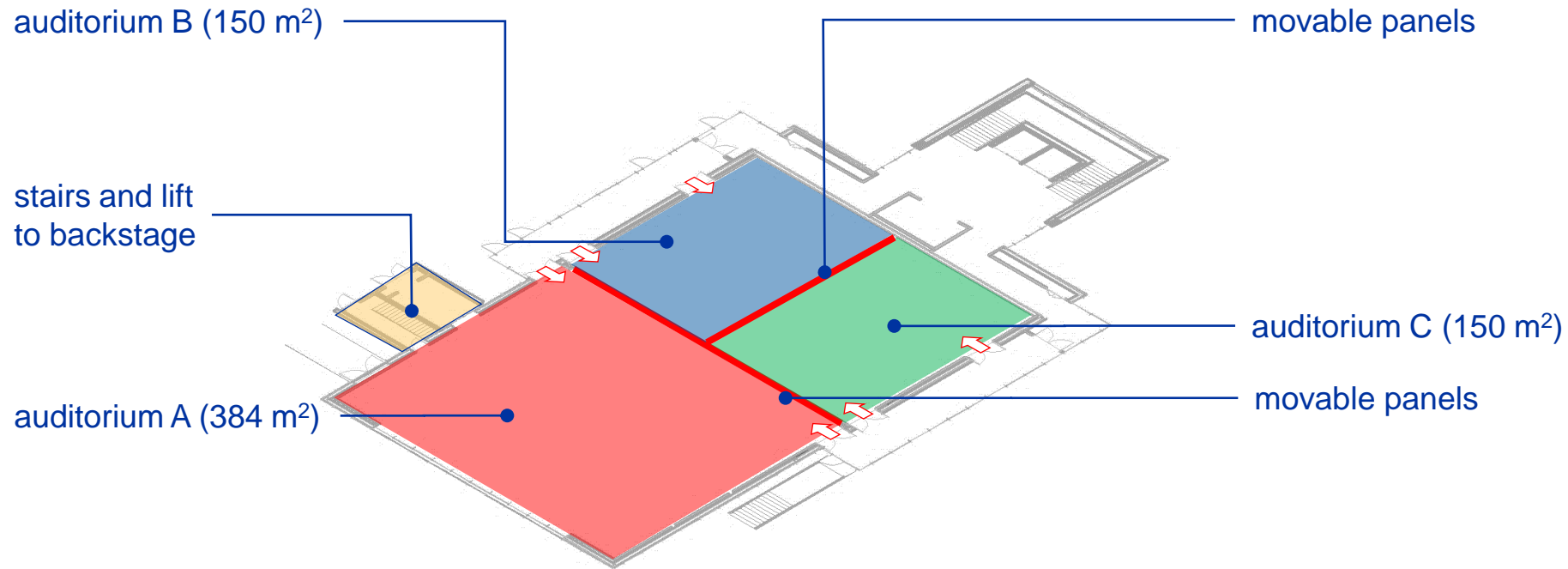


**Auditorium  
south  
access**

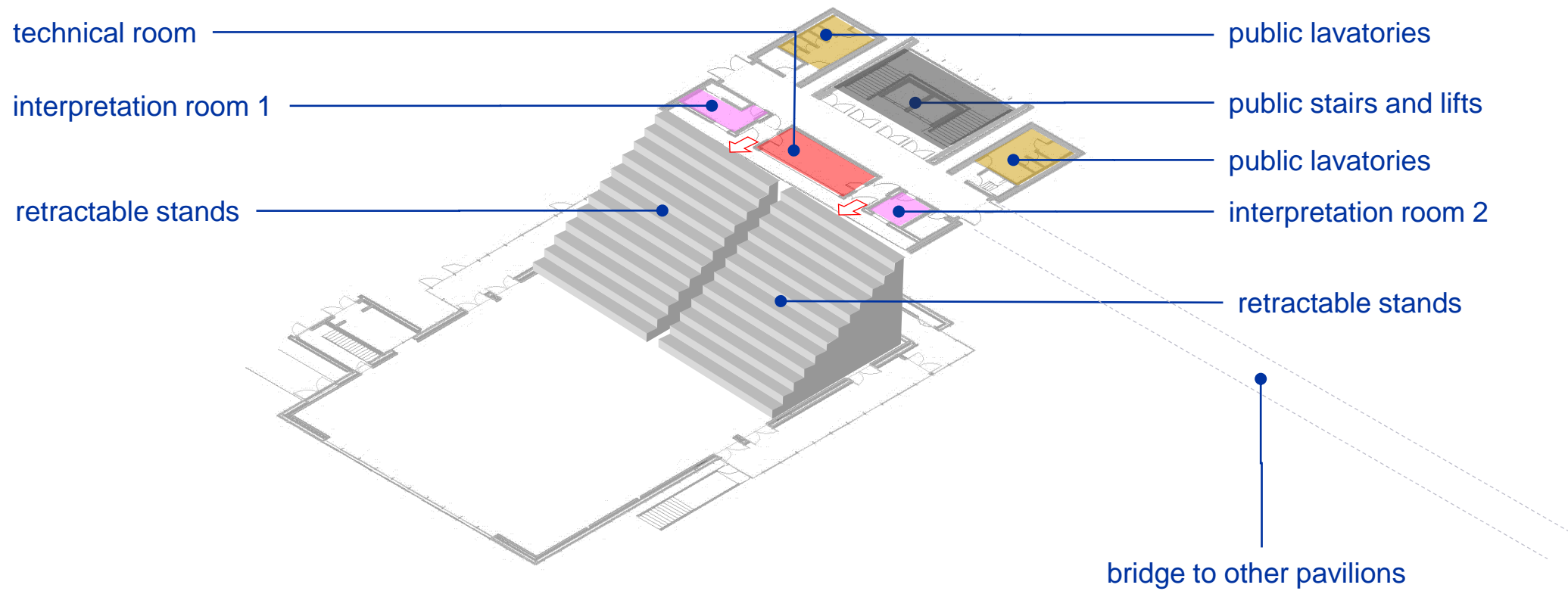
# Auditorium – level 0



# Auditorium – level 0



# Auditorium – levels 0 and 1

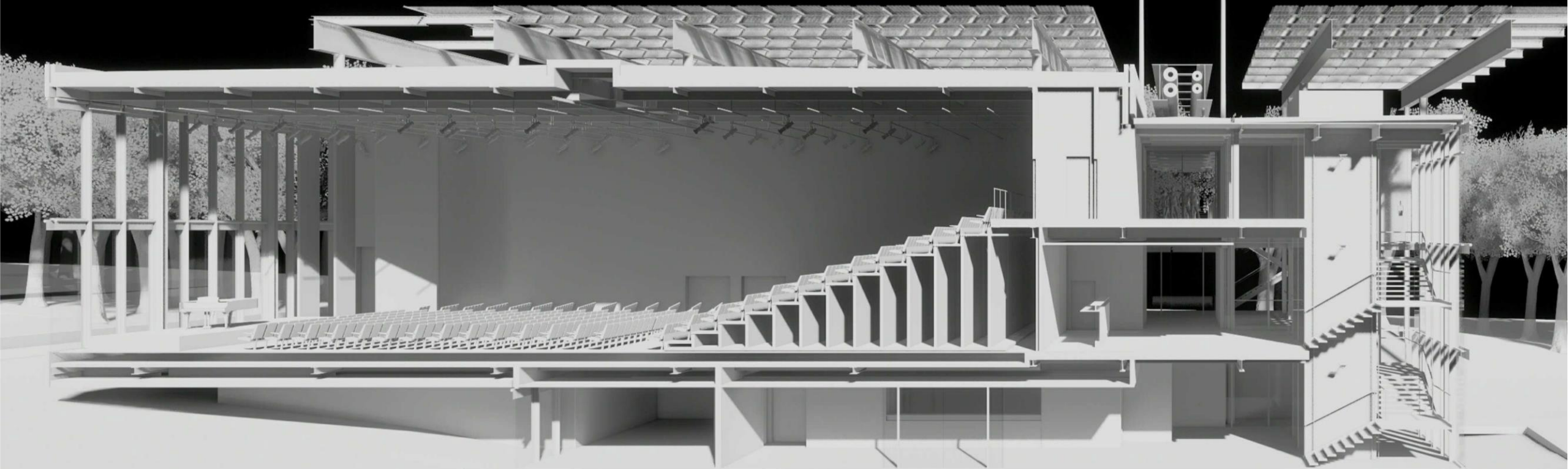


# Auditorium

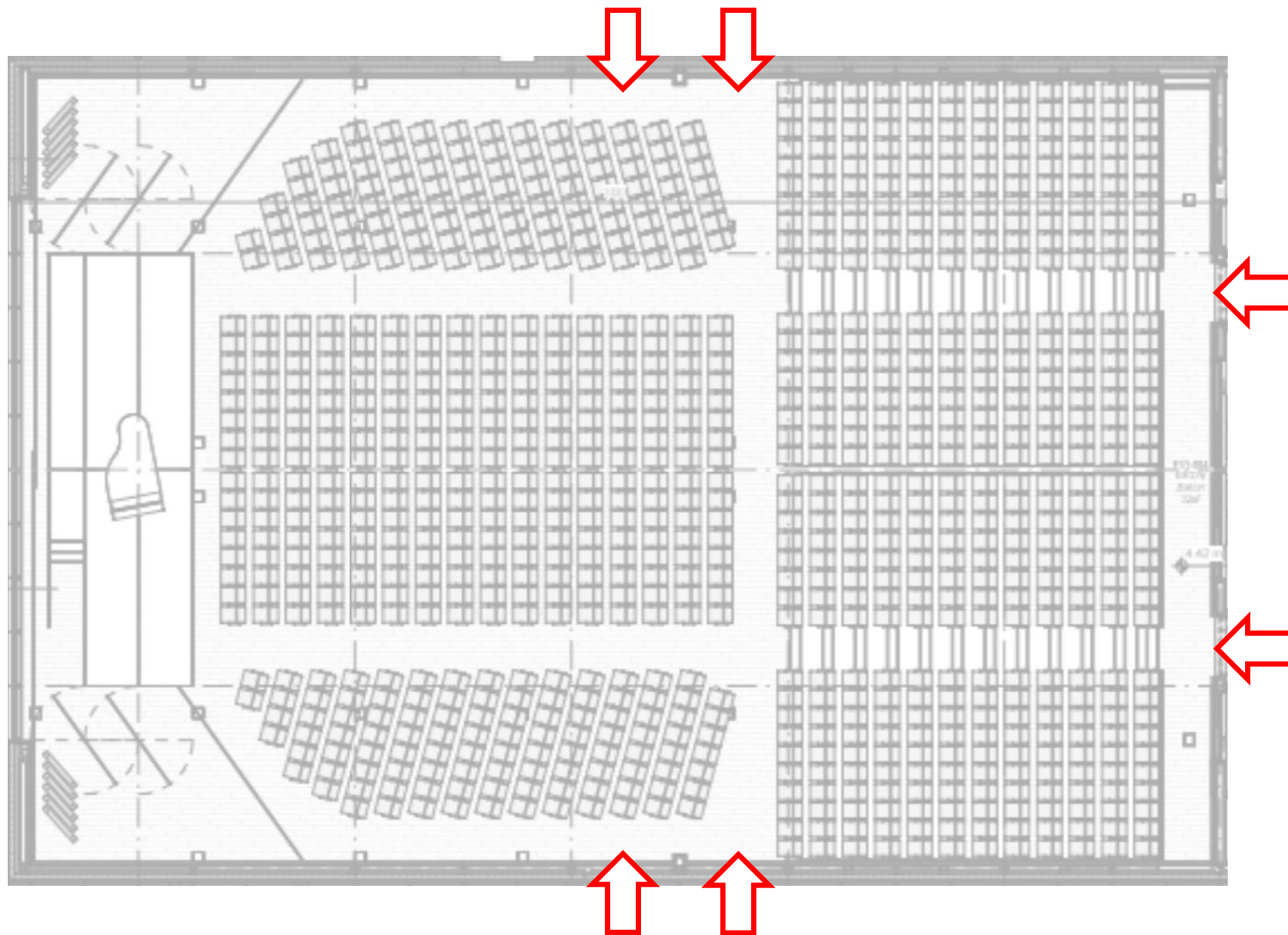




# Auditorium

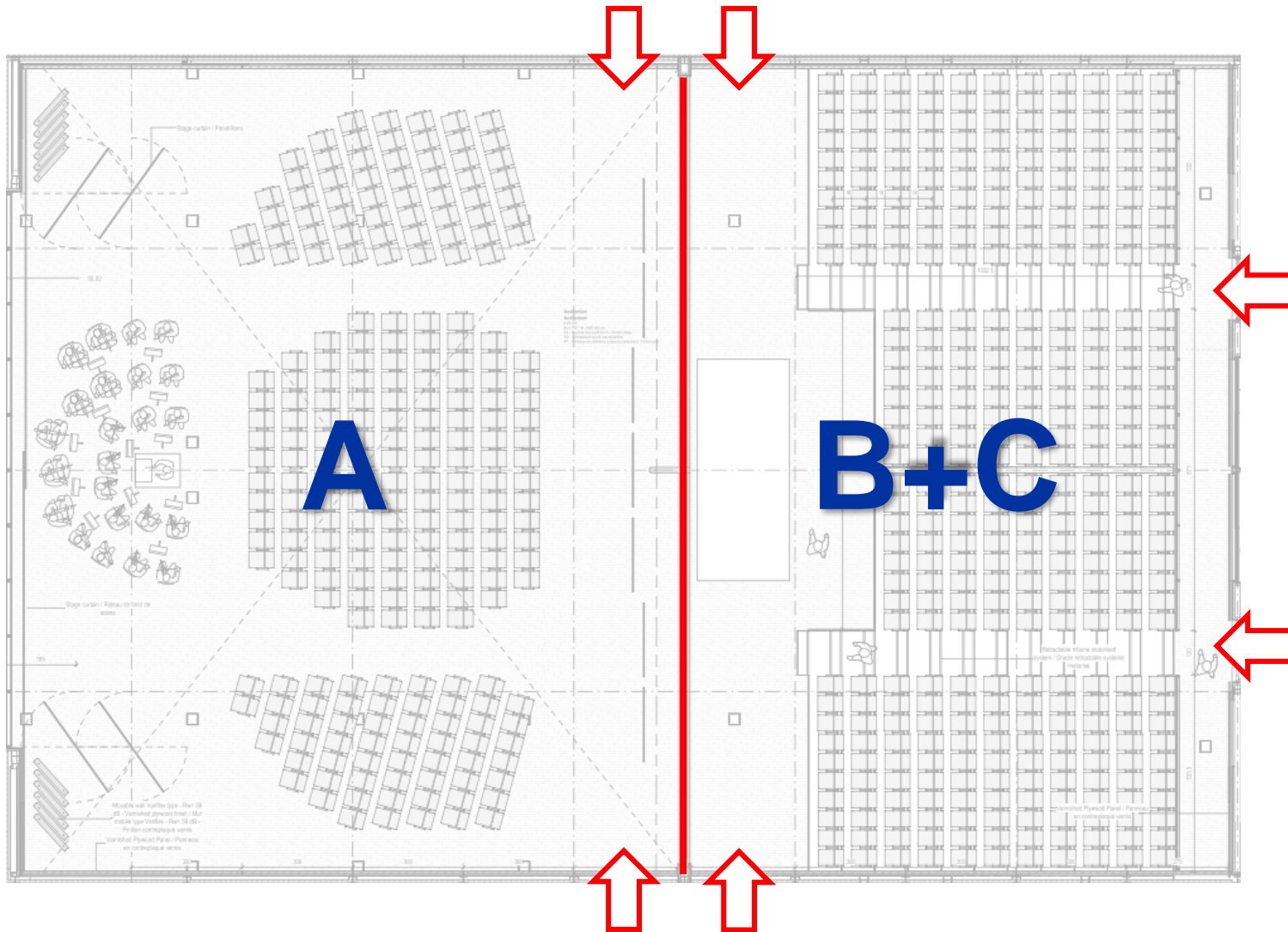


# Auditorium configuration – as one auditorium



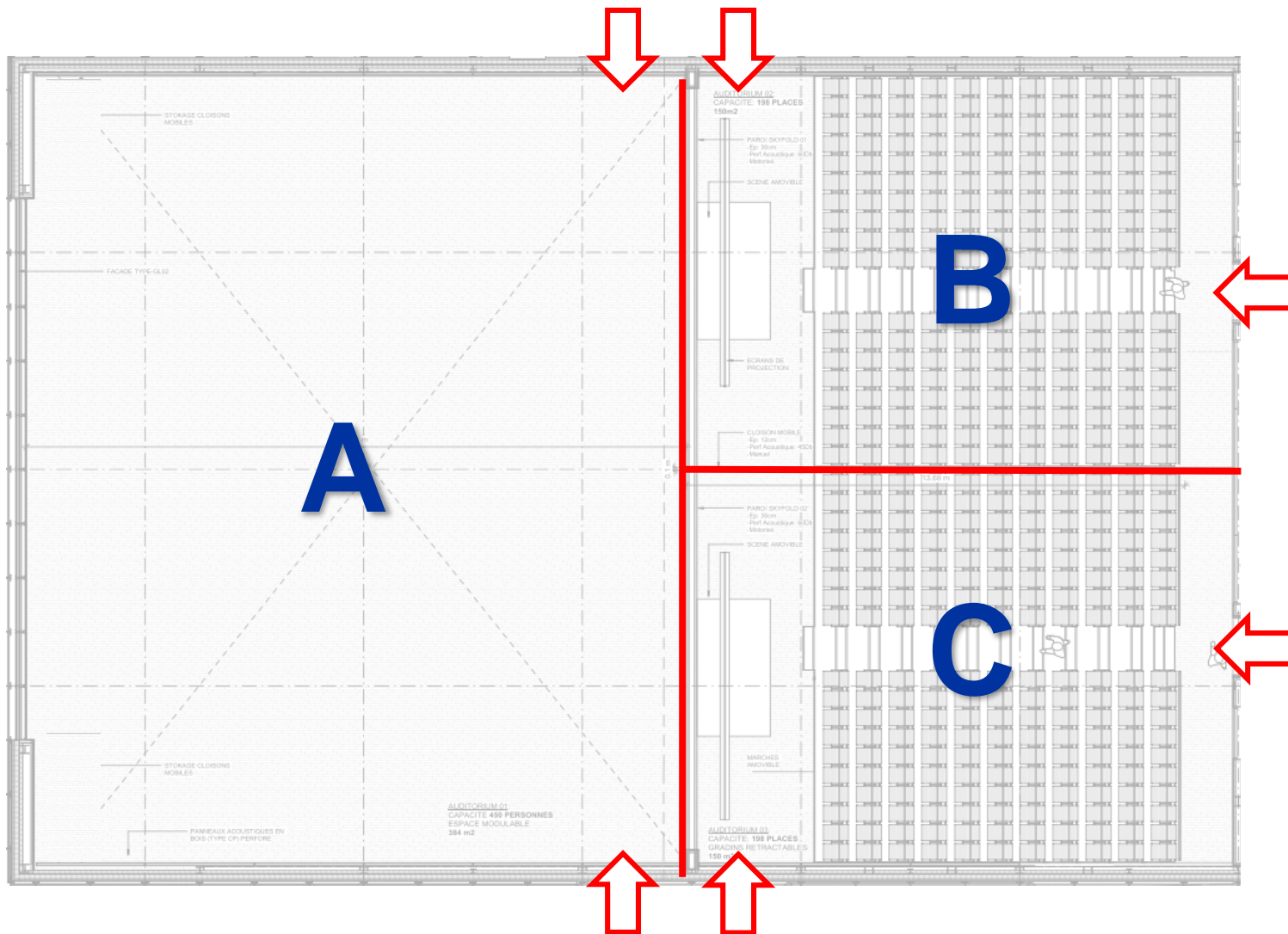
- Capacity 898 seats
  - 502 movable seats in front
  - 2 x 198 seats on retractable stands at the back
- 36 m<sup>2</sup> stage automatically stored in floor
- Projection screen behind the stage
- Blinds to darken the room fully
- Access: lower level (4x) + upper level (2x)

# Auditorium configuration – as two auditoriums



- Auditorium A**
  - 450 movable seats or free area
  - Access: lower level (2x)
  - Darkened or daylight
- Auditorium B+C**
  - 364 retractable seats
  - Access: lower level (2x)+ bridge level (2x)
  - Artificial light only
  - Removable stage
  - Projection screens (2x)

# Auditorium configuration – as three auditoriums



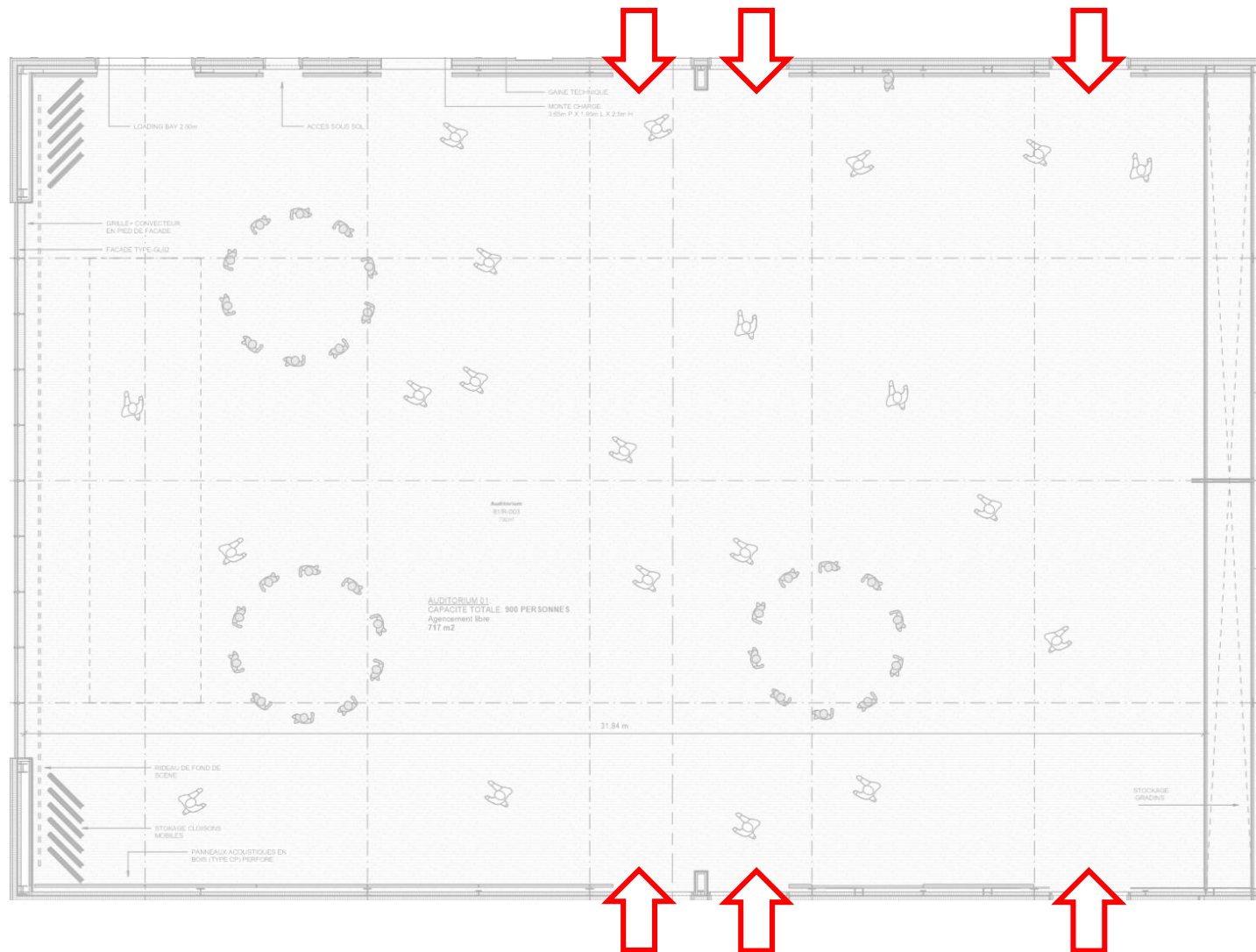
## Auditorium A

- 450 movable seats or free area
- Access: lower level (2x)
- Darkened or daylight

## Auditoriums B and C

- 198 retractable seats
- Access: lower level (1x) + bridge level (1x)
- Artificial light only
- Removable stage
- Projection screen (1x)

# Auditorium configuration – as one flat space



- Capacity:
  - Standing: 900 persons
  - Dinner: 300-500 persons
- Access: lower level (6x)
- Darken or daylight
- Possibility to use stage and theatre format

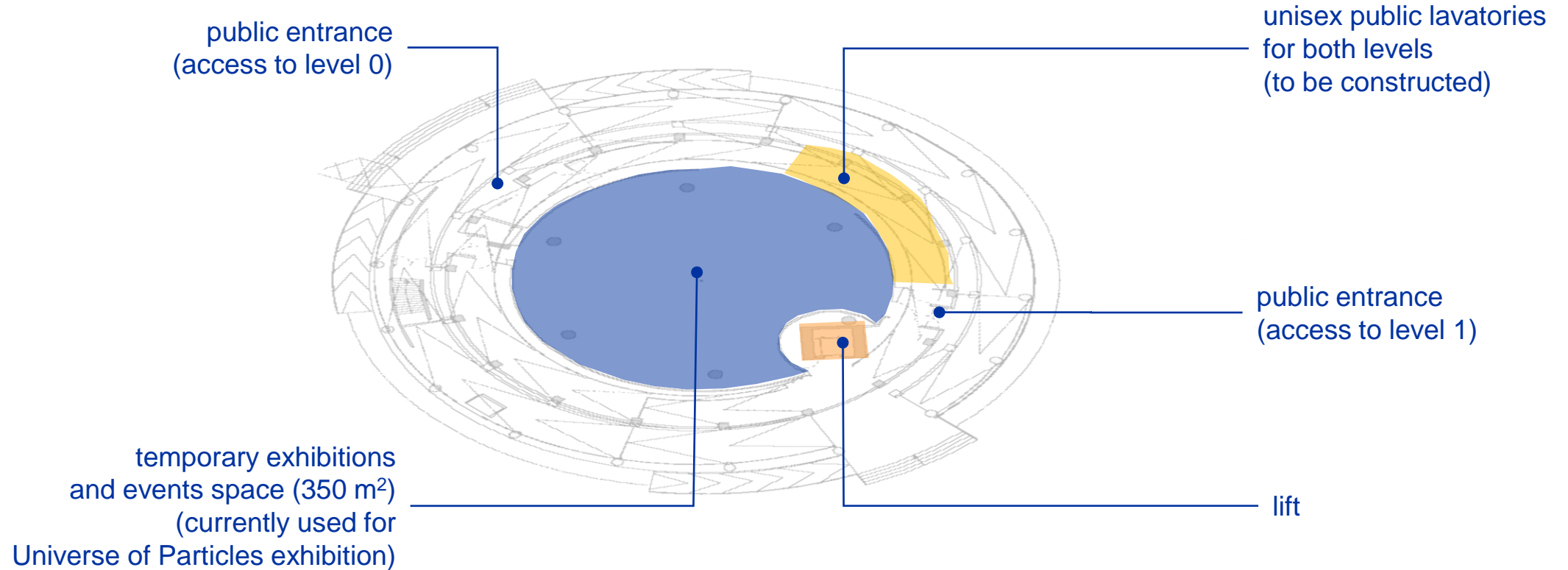
# Globe of Science and Innovation

The Globe will offer two large spaces for

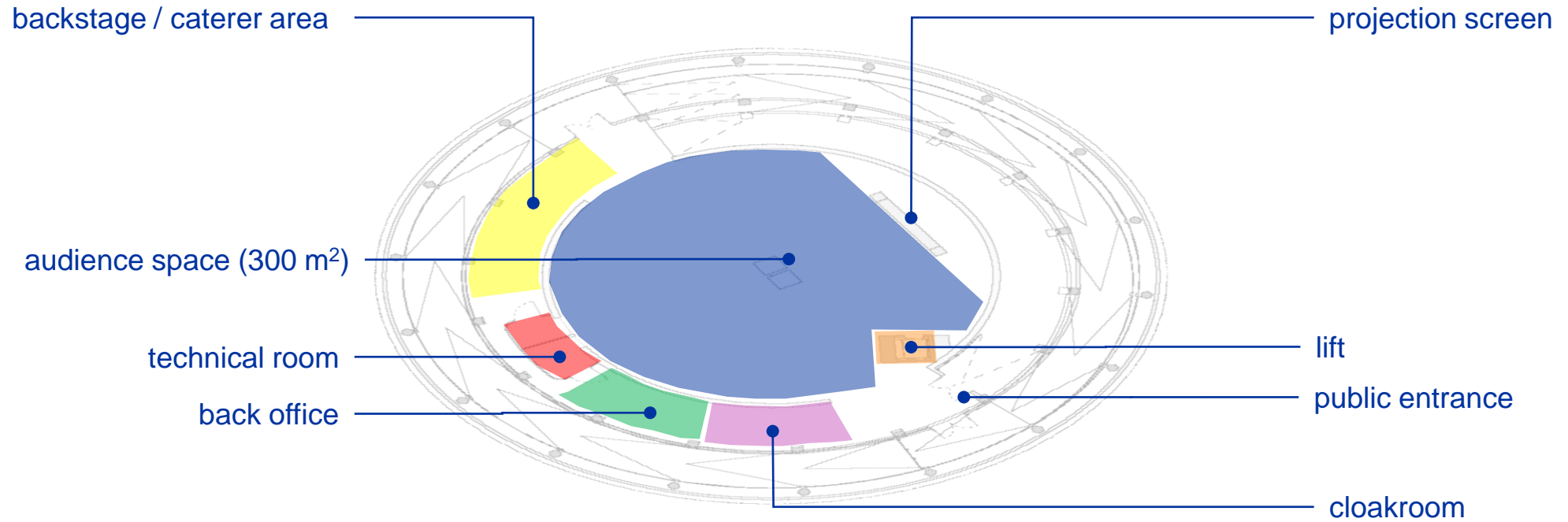
- Meetings
- Conferences
- Ceremonies
- Dinners, Cocktails
- Panels,
- Film screenings
- Science shows
- Artistic performances
- Workshops
- **Temporary exhibitions**

*Universe of particles* exhibition will be dismantled after Science Gateway opening

# Globe – level 0 (*project*)

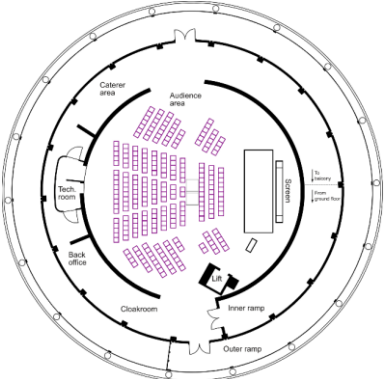


# Globe – level 1

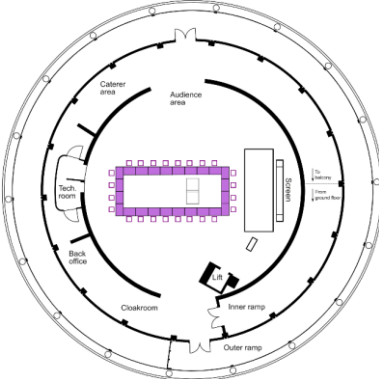




# Globe – Level 1 – Possible layouts



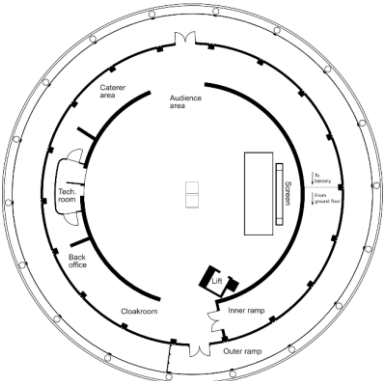
**Conference / Performance**  
capacity: 250 pax



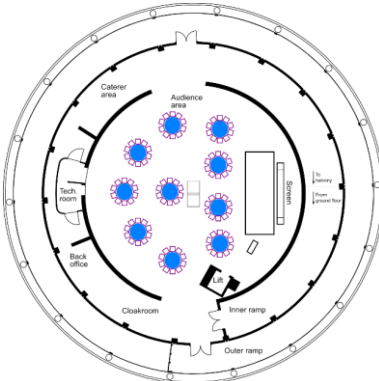
**Meeting**  
capacity: 50-100 pax



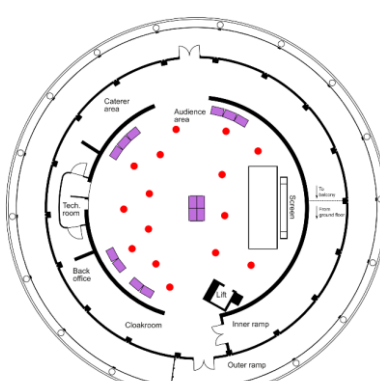
**Workshop**  
capacity: 50-100 pax



**Empty**  
capacity: 300 pax

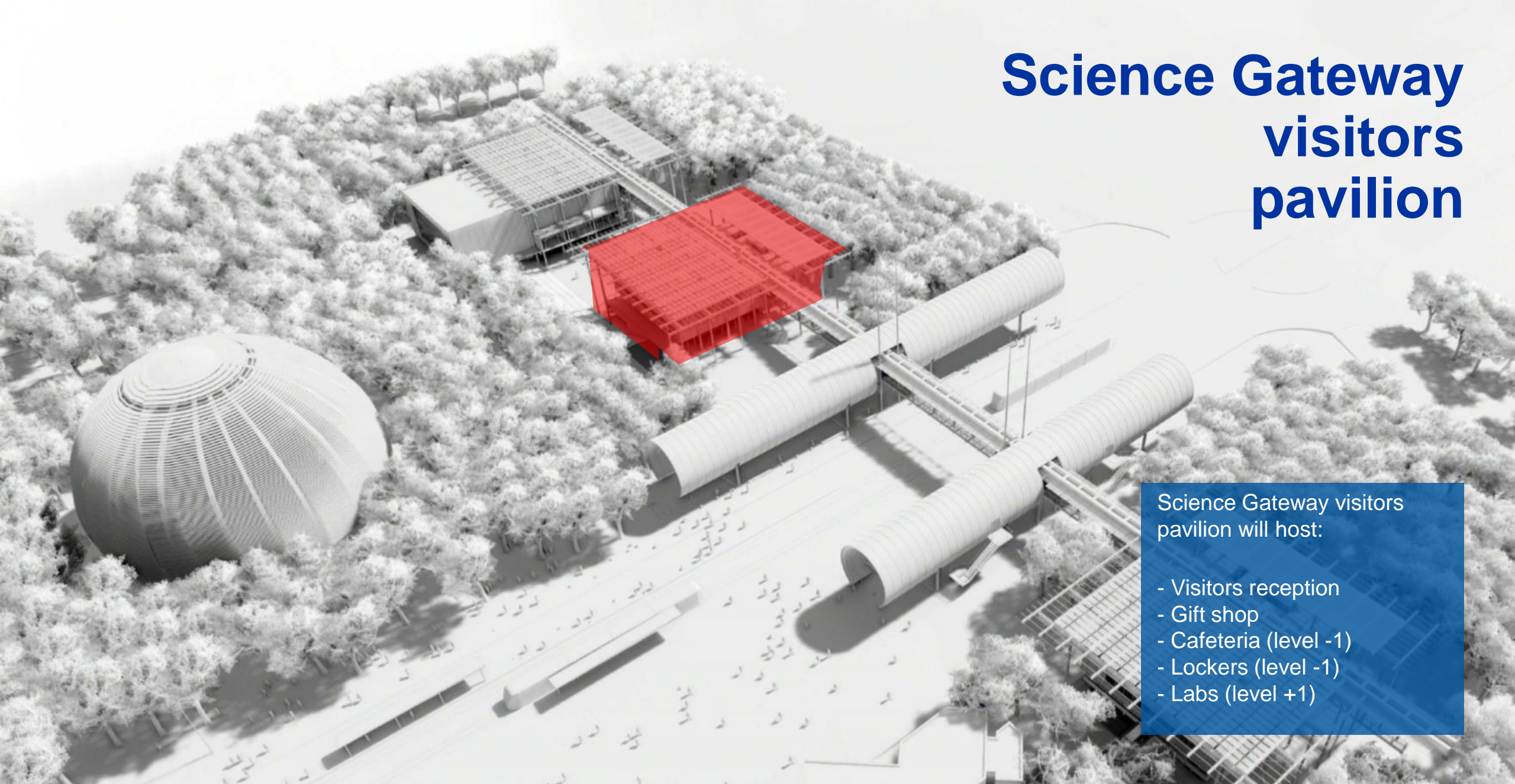


**Dinner**  
capacity: 100-160 pax



**Cocktail**  
capacity: 300 pax

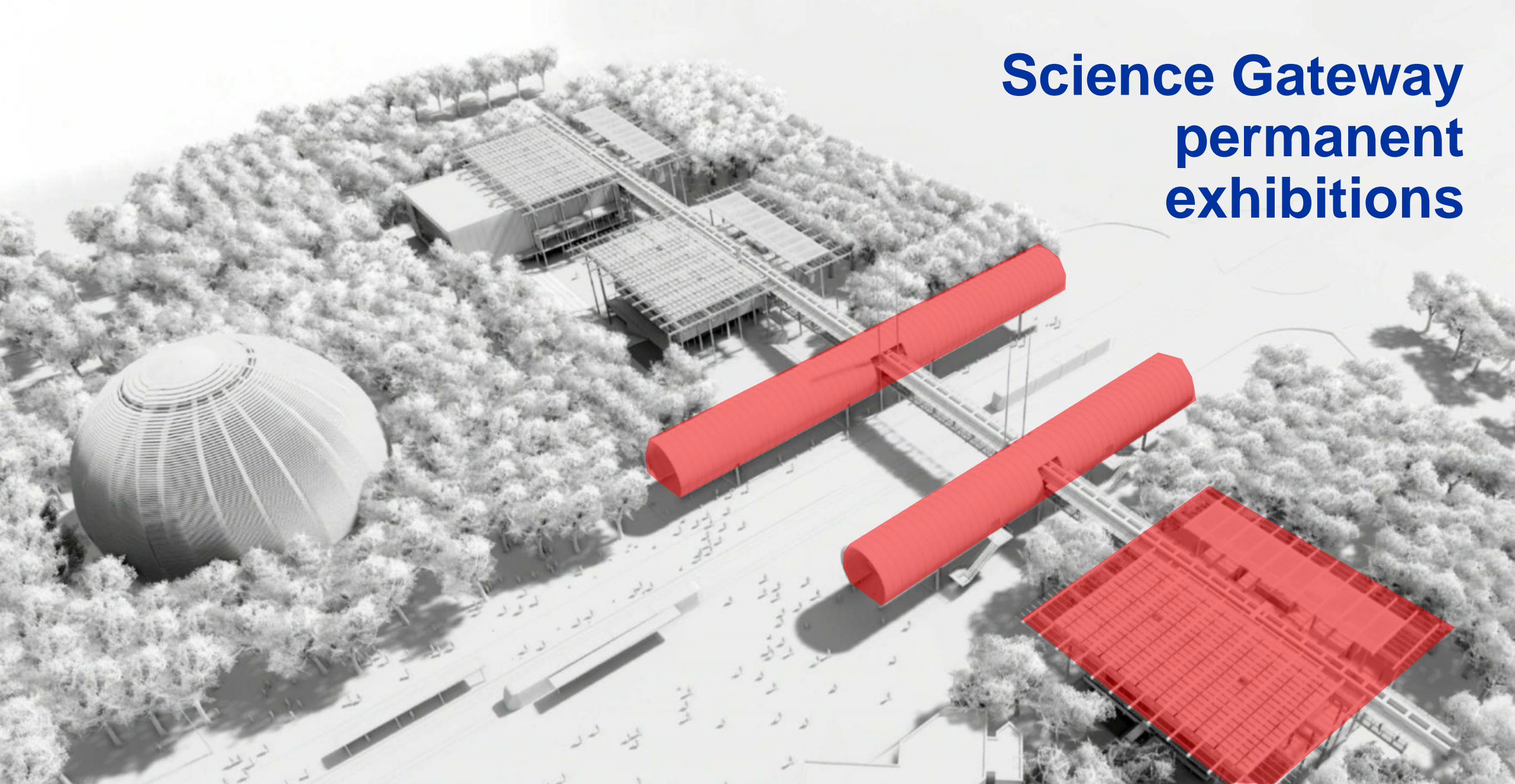
# Science Gateway visitors pavilion



Science Gateway visitors pavilion will host:

- Visitors reception
- Gift shop
- Cafeteria (level -1)
- Lockers (level -1)
- Labs (level +1)

# Science Gateway permanent exhibitions



# Other spaces that can be considered for events

ideasquare

*piazza*  
(outdoor)

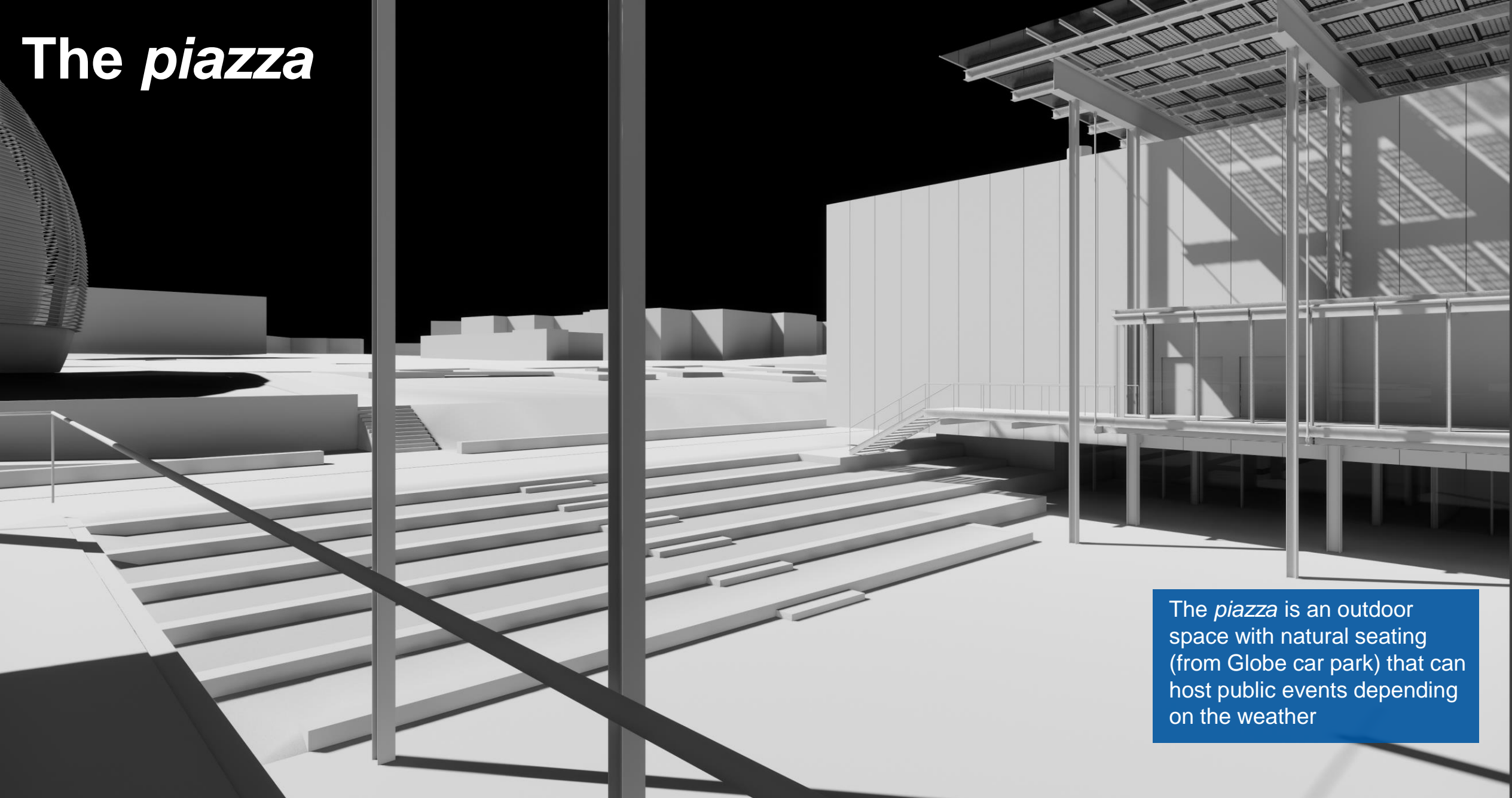
labs



# The *piazza*

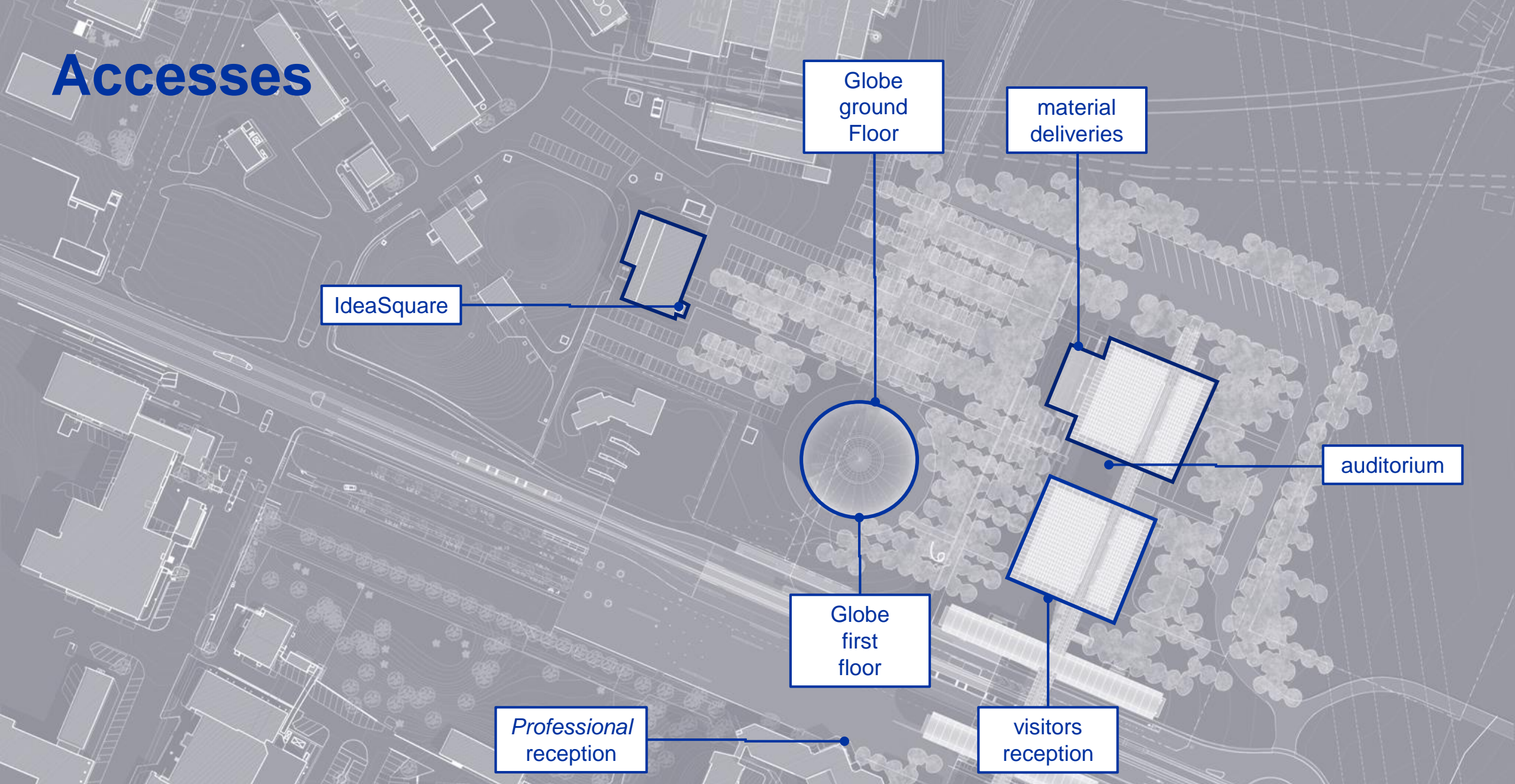
The *piazza* is an outdoor space with natural seating (from Globe car park) that can host public events depending on the weather

# The *piazza*

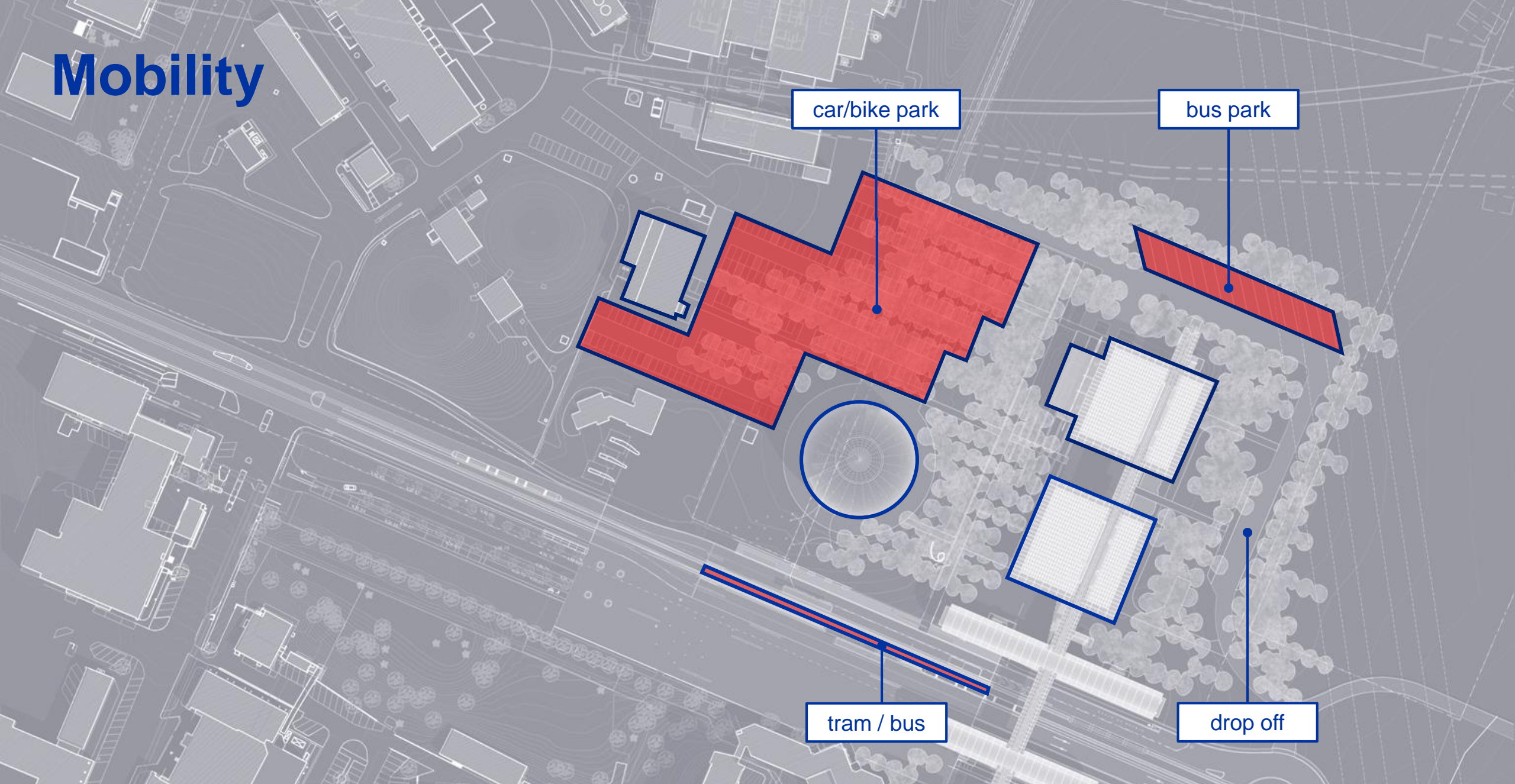


The *piazza* is an outdoor space with natural seating (from Globe car park) that can host public events depending on the weather

# Accesses



# Mobility



car/bike park

bus park

tram / bus

drop off



# Categories of activities in auditoriums and Globe

## CERN

- Important that some CERN activity occurs close to our visitors
- Some costs (cleaning, guards etc.) may apply depending on logistics
- Not bookable through Indico but through a dedicated form (see [visit.cern/your-event](http://visit.cern/your-event))
- Bookings no later than two months in advance
- Request procedure TBD (contact, arbitration etc.)

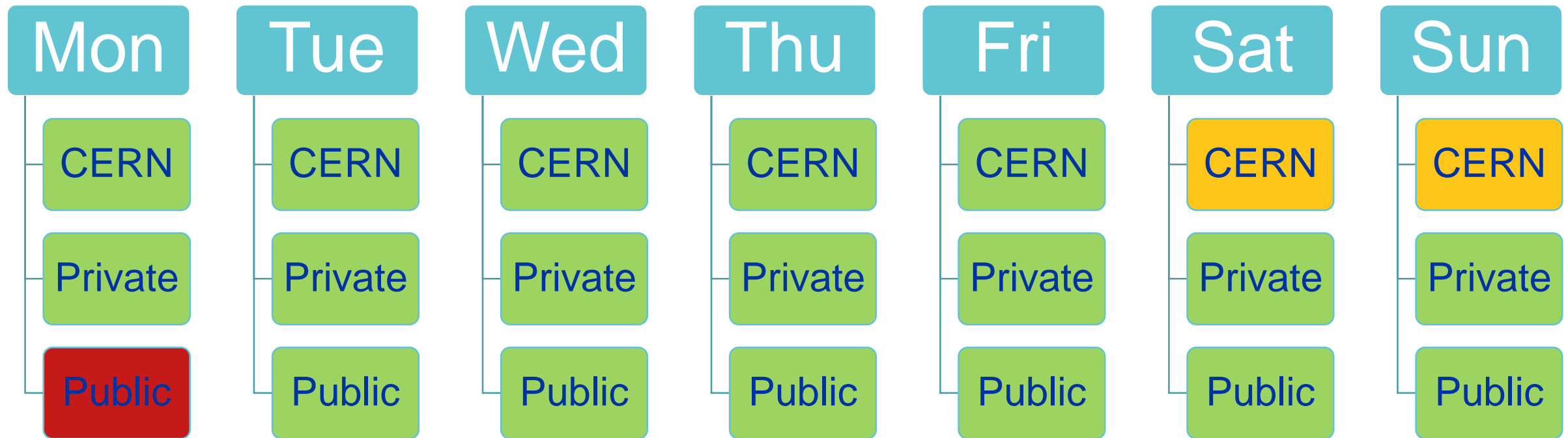
## Private

- Needed to raise funds to cover part of Science Gateway operation costs
- Similar to what has been proposed in the Globe for 16 years
- Bookings no later than two months in advance
- Business model and request procedure still to be decided

## Public

- Daytime:
  - Science shows and films for the Science Gateway visitors
  - Programme set one month in advance using free slots and announced on website
- Evenings:
  - Usual programme of public events (conferences, panels, films, performances etc.)
  - Programme can be set months in advance

# Audience per week day



■ Open    ■ Exceptionally    ■ Closed

# Strengths and weaknesses

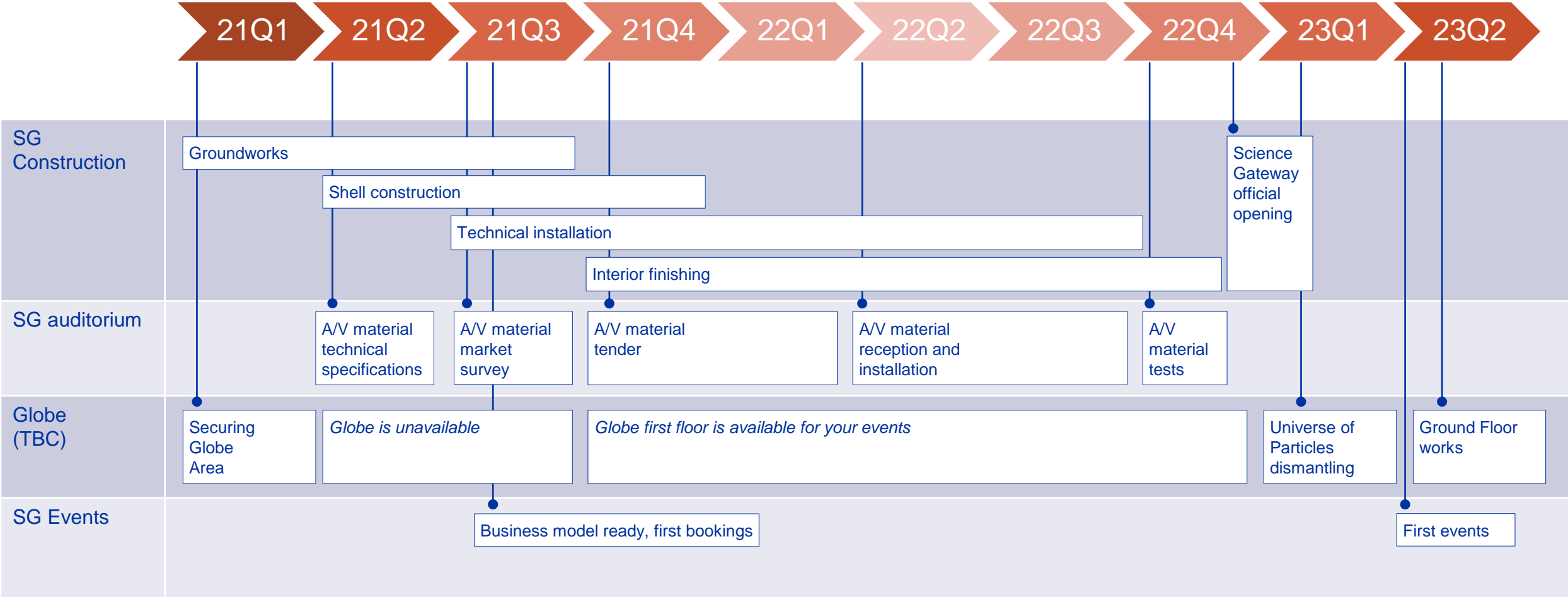


- 900 + 250 seats
- CERN owned
- Flexibility of spaces
- Two independent buildings
- Audiovisual: fully equipped + expert technical teams
- Accessibility (tram, airport, highway, parking)
- Complementary offers: labs, exhibitions, tours, shop, restaurant
- CERN + Renzo Piano brands



- Limited backstage space (small cloakroom, no caterer space etc.)
- Limited stage surface
- Missing breakout rooms
- Elements to be installed manually (seats, stages, stage curtains, movable panels etc.) will incur extra operational costs and time
- Competition between CERN, private and public activities

# Project timeline



# The team



**Loraine Massarotti**  
*Events coordinator*



**Philippe Moret**  
*Technical support*



**Gilles Gautheron**  
*Audiovisual technician*



**Marie Bouvier**  
*Local events coordinator*



**Patrick Geeraert**  
*Science Gateway  
Project leader*



**François Briard**  
*Visitors and Events Operations  
Section leader*

# Your input

Your input is most welcome based on your past experience (Globe, main auditorium, other venues outside CERN etc.) and your expectations.

Topics can cover:

- Availability
- Booking procedure
- Internal billing model
- Description of services
- Technical support
- Event management
- Types of events your foresee
- Etc...

Use our new contact e-mail address:

**[your.event@cern.ch](mailto:your.event@cern.ch)**



[home.cern](http://home.cern)