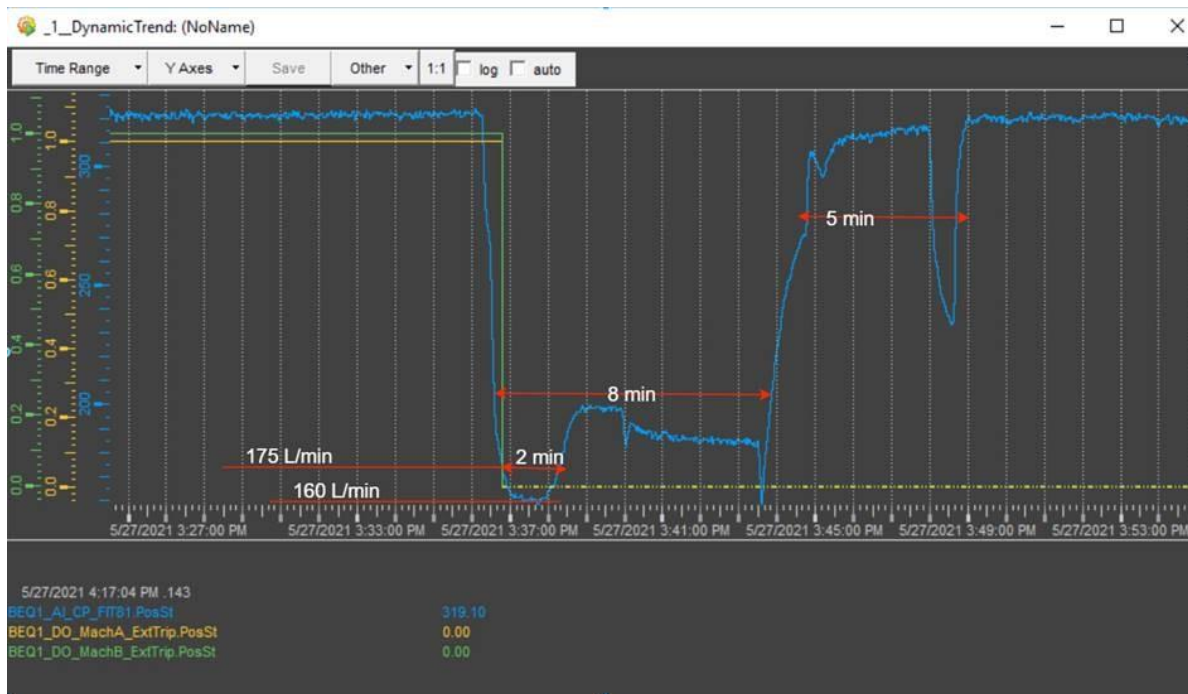




# Thu 27/05/21 18:41

BEQ1 compensator tripped on water cooling failure and interlocked the SPS.

At first a cooling problem was expected, but after investigating with OP-SPS, OP-TI, EN-CV and SIG it was understood that when the SPS is stopped some regulation valves are closed on SIG supply, which is normal, but the BEQ1 sees the low water flow on the primary cooling and tripped the BEQ1.



It will be looked into by the TIOC to propose an interlock based on the cooling water temperature on the secondary side instead.

The graph shows the flow that dropped (blue line).

# Fri 28/05/21 06:14

Multiple alarms in PSEN indicating an electrical perturbation impacting PS, SPS, LHC and Meyrin sites, alarms clear shortly afterwards

SPS: A dump down (minimal to no consequence)

CPS: All cavities down in PS

Mail from RTE to confirm a transient fault in the 400kV line of Cornier-Genissiat

#### Notification RTE - Information suite à un incident sur le RPT

Chère cliente, cher client,

Nous vous informons de l'enregistrement d'un Défaut fugitif le 28/05/2021 à 06:14:51 sur la liaison 400kV CORNIER-GENISSIAT ayant pu engendrer un Creux de tension au niveau de votre site de CERN.

Pour tout complément vous pouvez contacter votre interlocuteur RTE habituel.

RTE, Réseau de transport d'électricité  
Portail Services : <https://www.services-rte.com>

Si vous souhaitez ne plus recevoir de notifications : [cliquez ici](#).

“-12.14% de la tension nominale a été ressenti sur l'ensemble du CERN pendant environ 70ms.”

