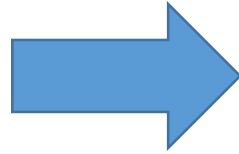


# Xboxes Update

31/03/2021

# Summary



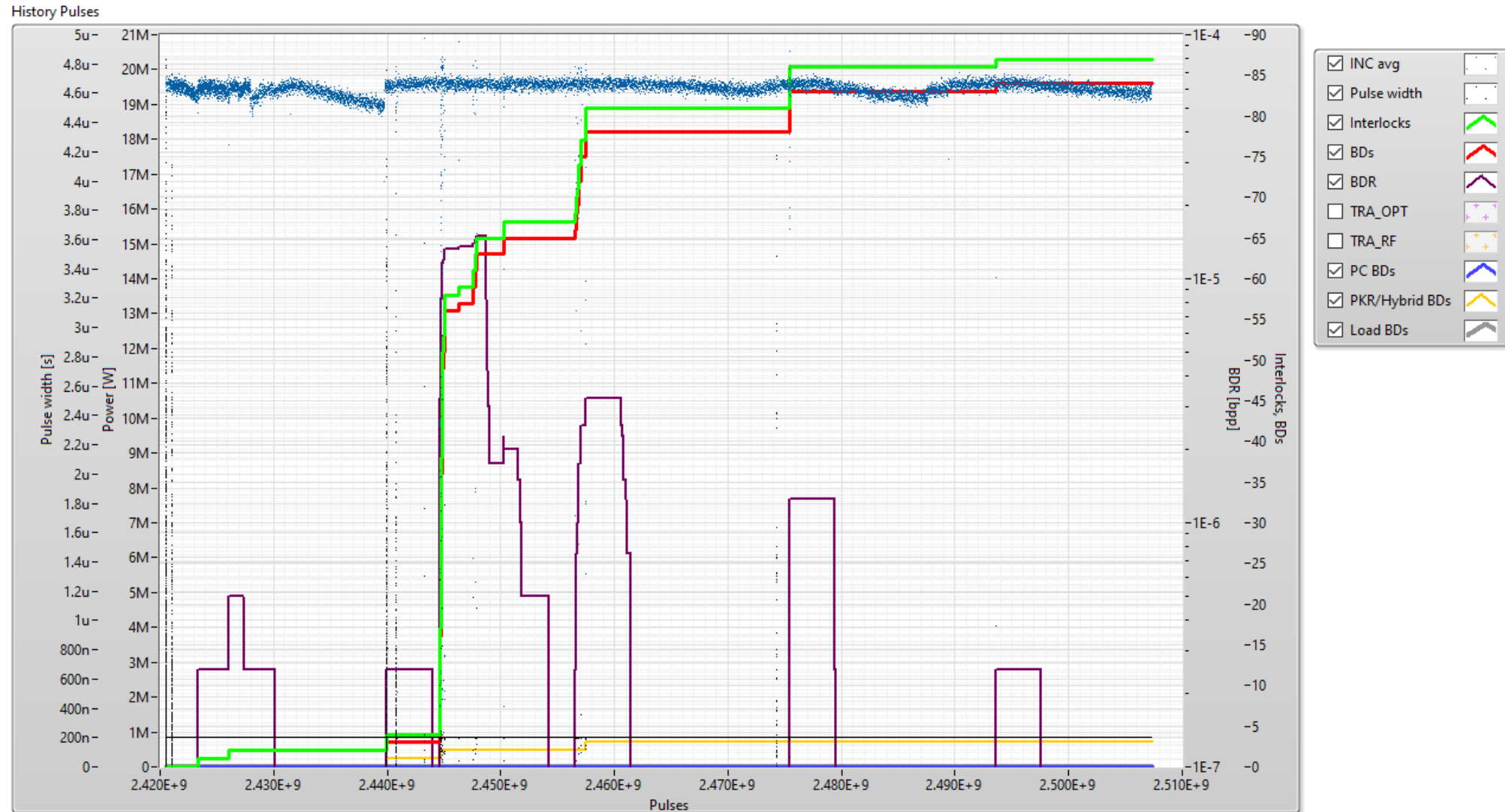
- XBOX1:
- XBOX2:
- XBOX3AB: T42 Backwards Structures
  - Line 1 not running (to avoid interfering Line 2)
  - Line 2 running flat:
    - 24 MW, 200ns, 100Hz per line
  - Modulator B had a Body Temperature Interlock

- XBOX1:
- XBOX2:
- XBOX3AB: T42 Backwards Structures
  - Line 1 not running (to avoid interfering Line 2)
  - Line 2 running flat:
    - 20.5 MW, 200ns, 200Hz per line

# XBOX3 AB – Line 2

## Parameters:

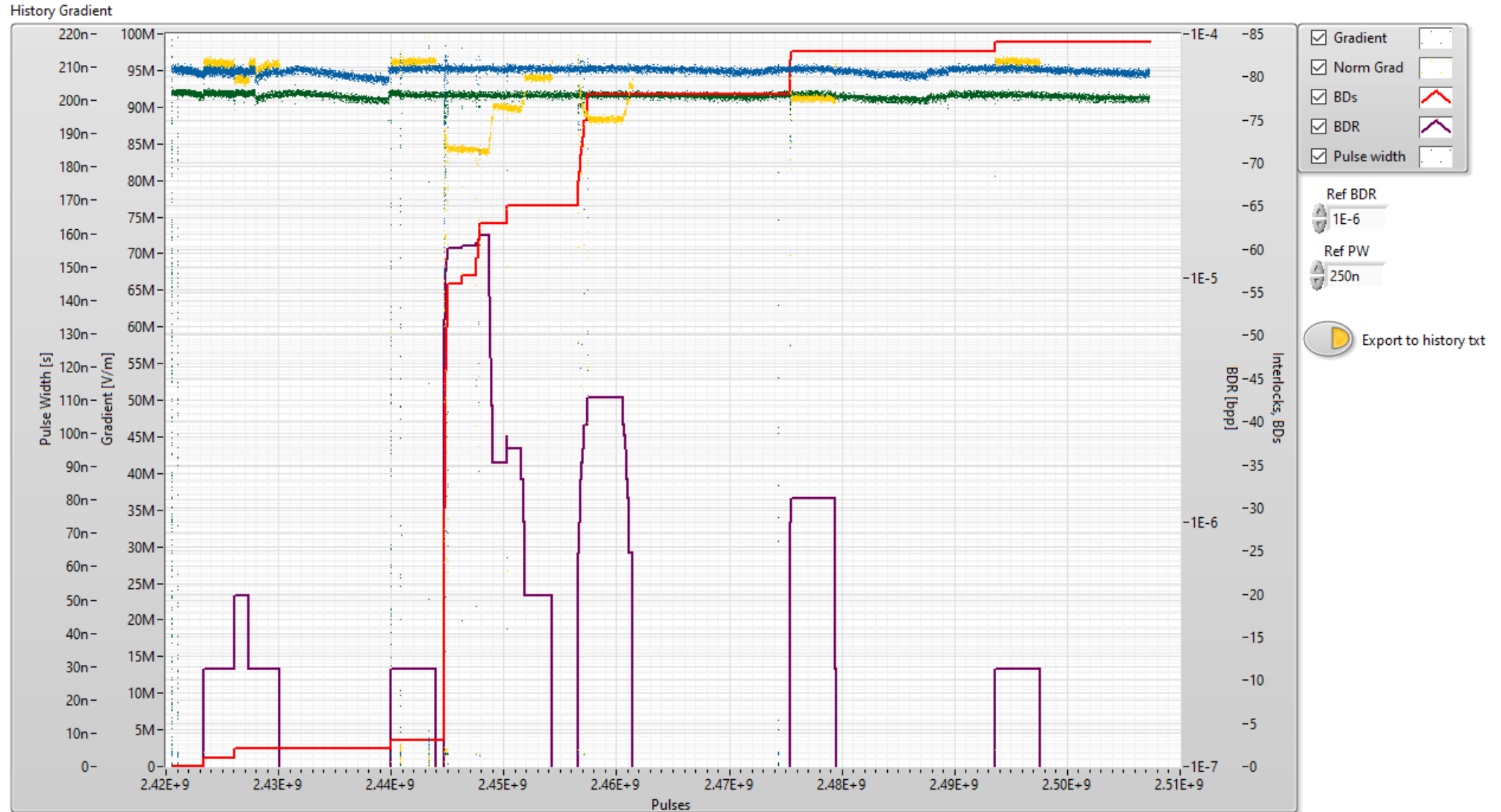
- 1.9us klystron pulse
- 200ns comp. pulse
- 200Hz rep rate per line
- **Current Power: 20.5 MW (peak)**



# XBOX3 AB – Line 2

## Parameters:

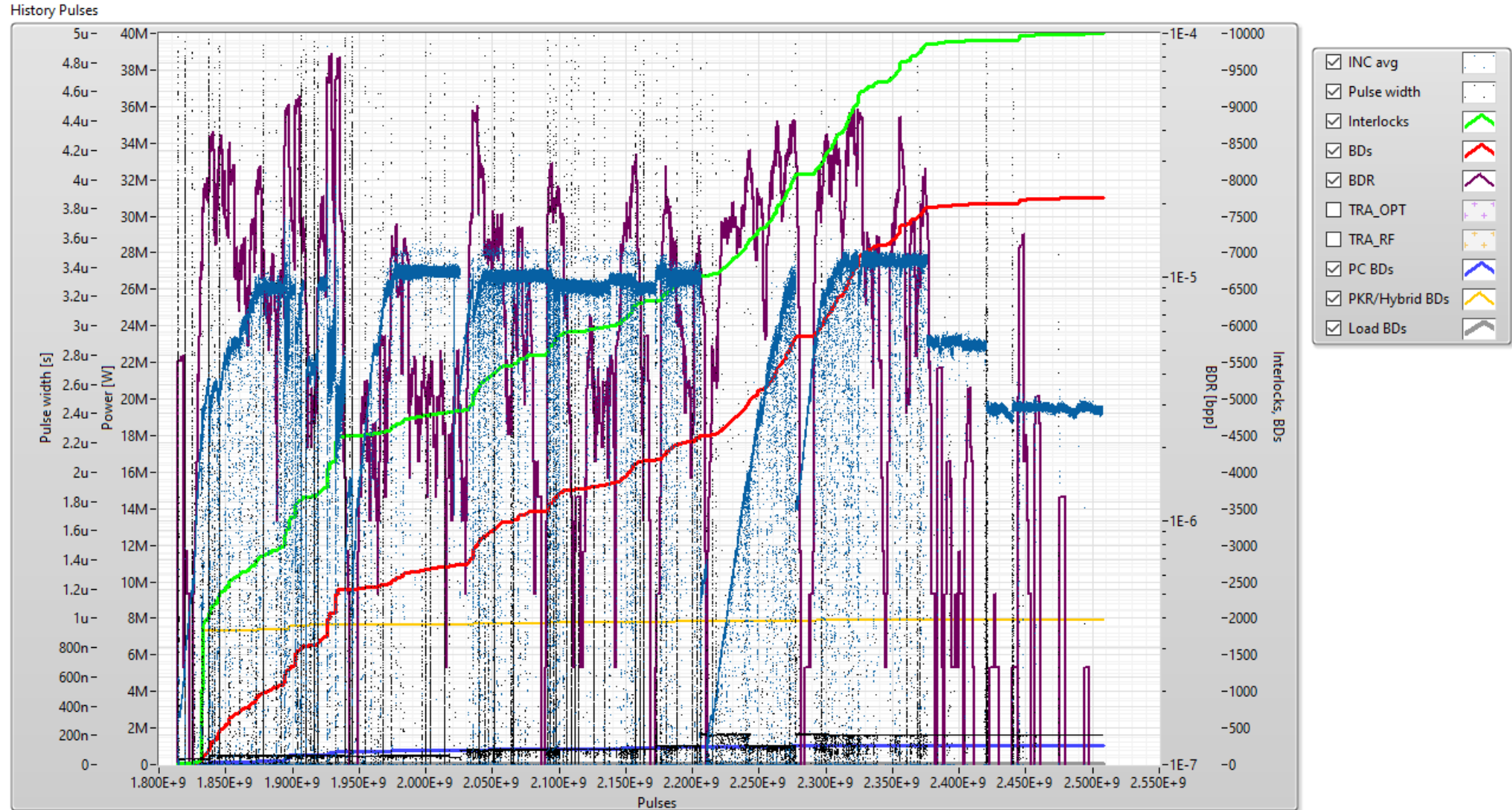
- 1.9us klystron pulse
- 200ns comp. pulse
- 200Hz rep rate per line
- **Current Power: 20.5 MW (peak)**



# XBOX3 AB – Line 2

## Parameters:

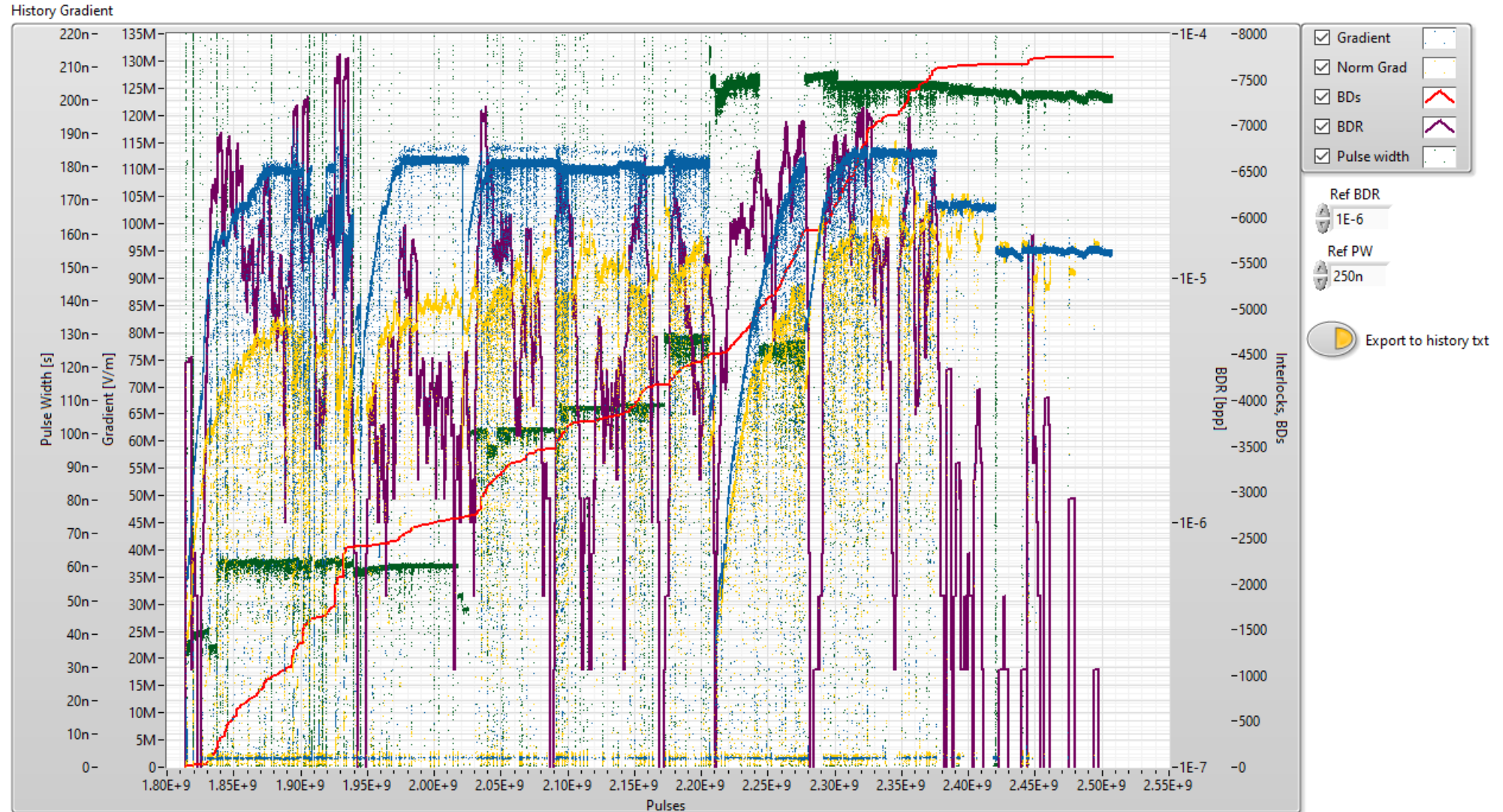
- 1.9us klystron pulse
- 200ns comp. pulse
- 200Hz rep rate per line
- **Current Power: 20.5 MW (peak)**



# XBOX3 AB – Line 2

## Parameters:

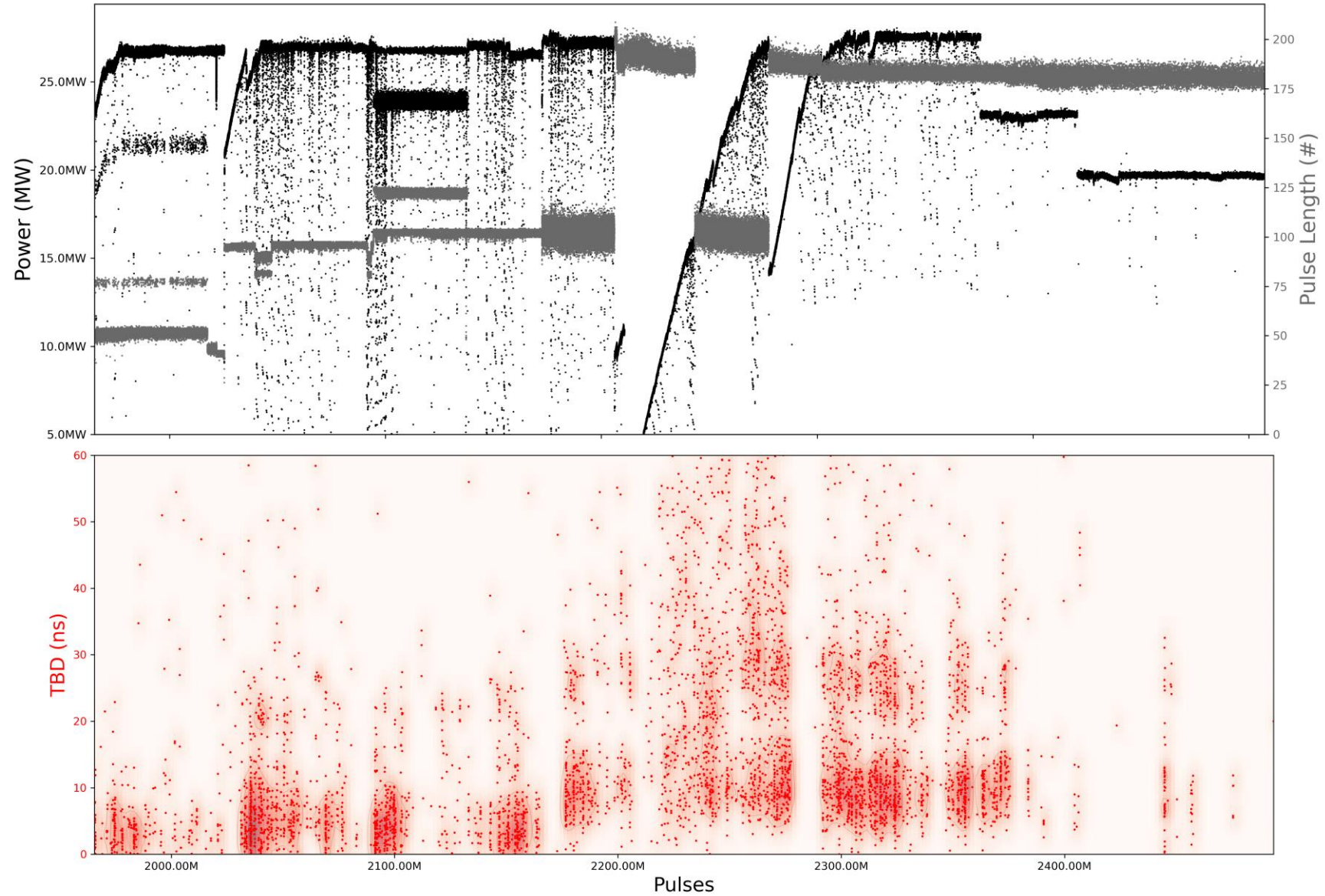
- 1.9us klystron pulse
- 200ns comp. pulse
- 200Hz rep rate per line
- **Current Power: 20.5 MW (peak)**



# XBOX3 AB – Line 2 – BD Localization (October - Now)

## Parameters:

- 1.9us klystron pulse
- 200ns comp. pulse
- 200Hz rep rate per line
- **Current Power: 20.5 MW (peak)**



# XBOX3 AB – Line 2 – BD Localization (October - Now)

## Parameters:

- 1.9us klystron pulse
- 200ns comp. pulse
- 200Hz rep rate per line
- **Current Power: 20.5 MW (peak)**

