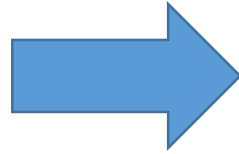


Xboxes Update

14/04/2021

Summary



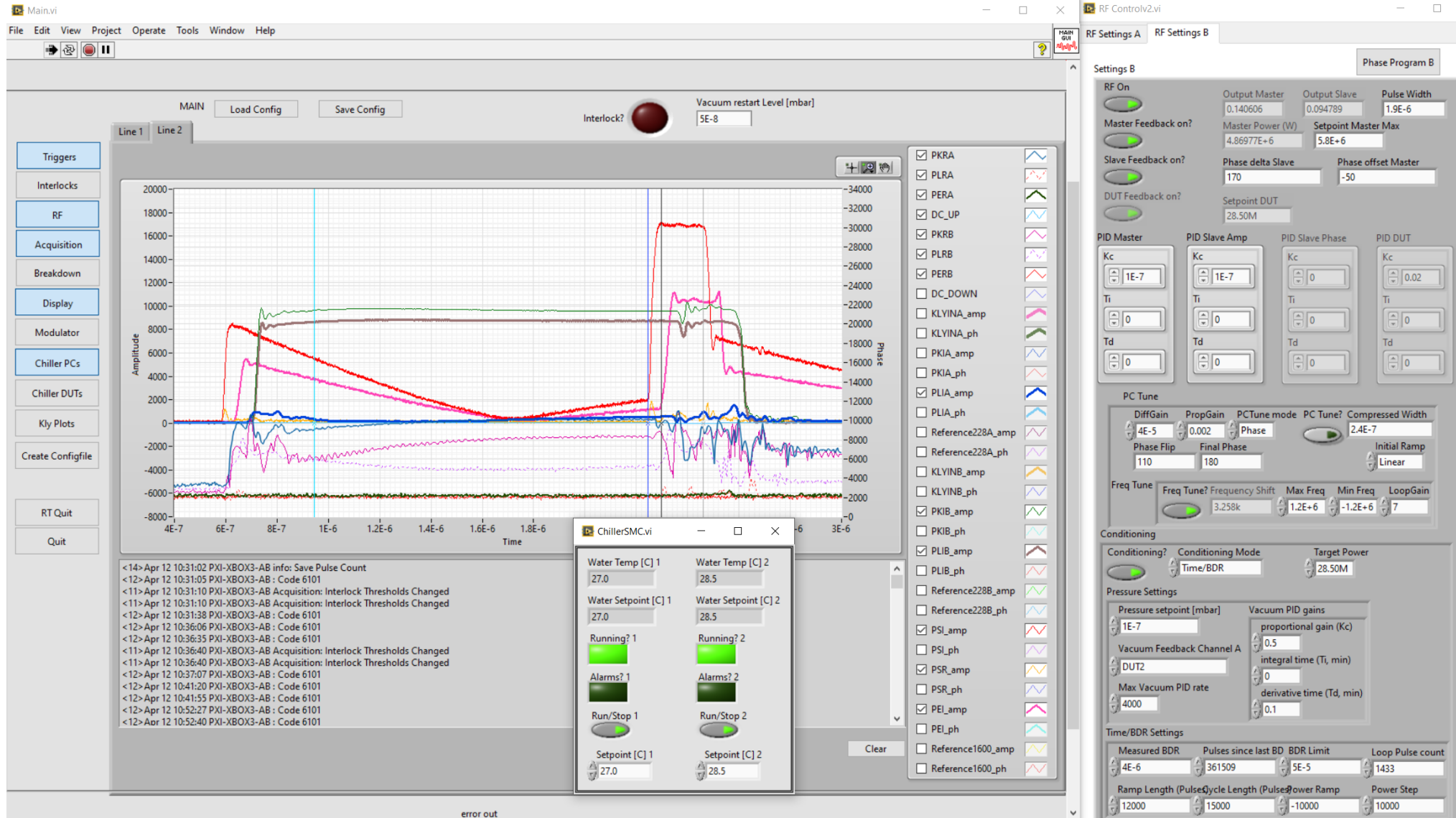
- XBOX1:
- XBOX2:
- XBOX3AB: T42 Backwards Structures
 - Line 1 not running (to avoid interfering Line 2)
 - Line 2 running flat:
 - 20.5 MW, 200ns, 150Hz per line

- XBOX1:
- XBOX2:
- XBOX3AB: T42 Backwards Structures
 - Line 1 not running (to avoid interfering Line 2)
 - Line 2 running flat at 28.5 MW:
 - Line 2 ramped up to 28.5 MW and running flat since then.
 - 28.5 MW, 200ns, 150Hz per line

XBOX3 AB – Status

Parameters:

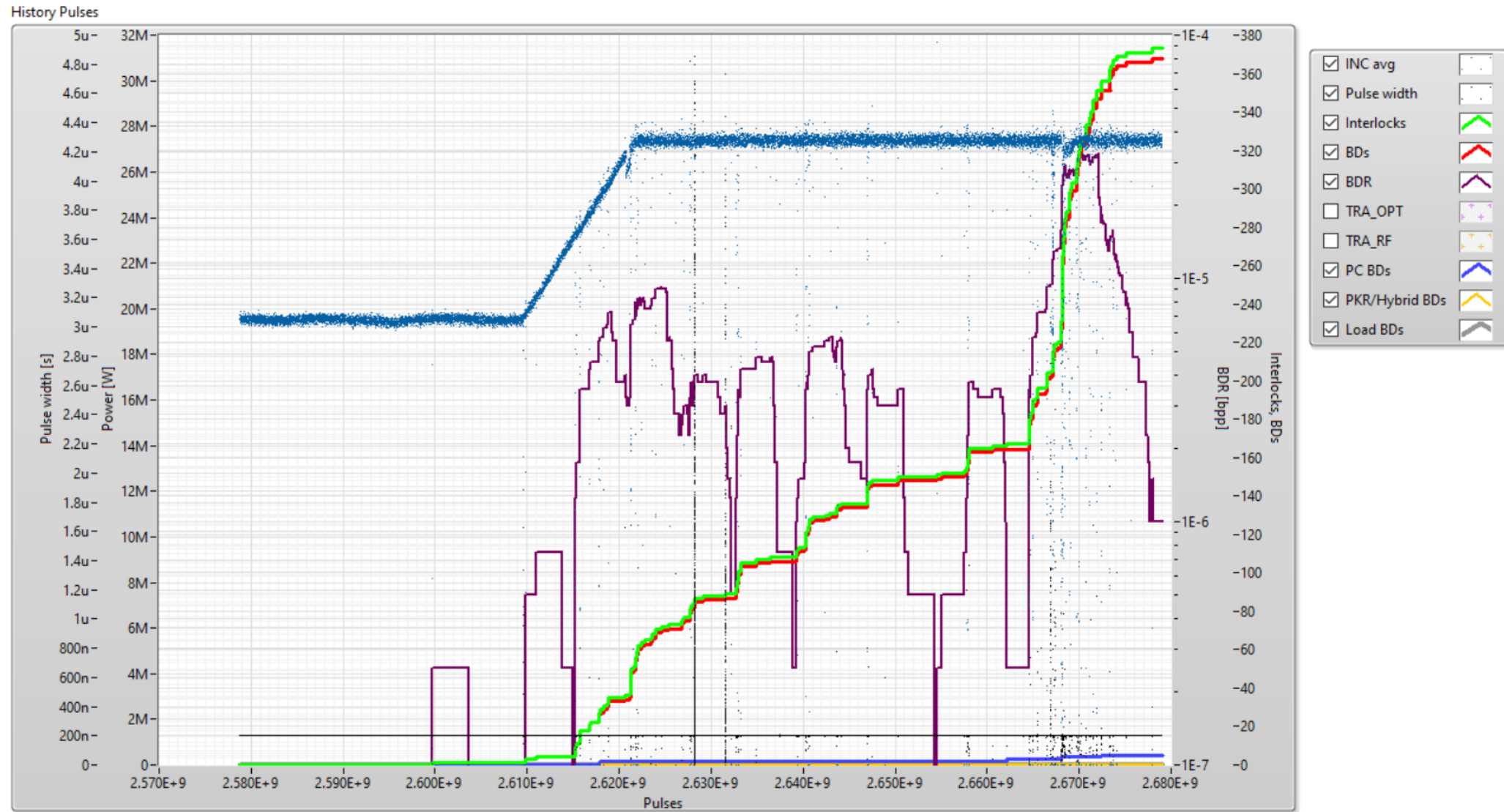
- 1.9us klystron pulse
- 200ns comp. pulse
- 150Hz rep rate per line
- **Current Power: 28.5 MW (peak)**



XBOX3 AB – Line 2

Parameters:

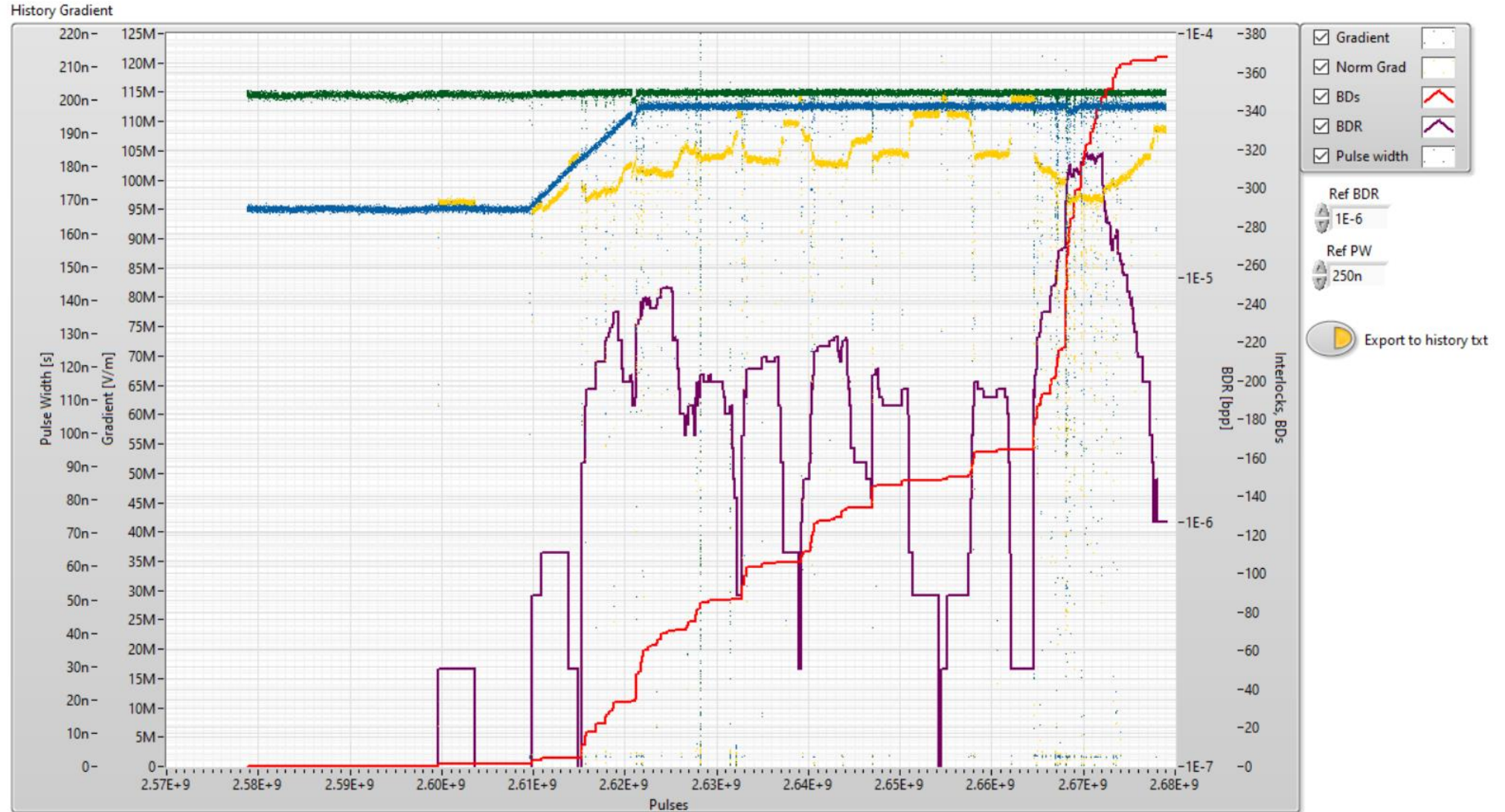
- 1.9us klystron pulse
- 200ns comp. pulse
- 150Hz rep rate per line
- **Current Power: 28.5 MW (peak)**



XBOX3 AB – Line 2

Parameters:

- 1.9us klystron pulse
- 200ns comp. pulse
- 150Hz rep rate per line
- **Current Power: 28.5 MW (peak)**



XBOX3 AB – Line 2

Parameters:

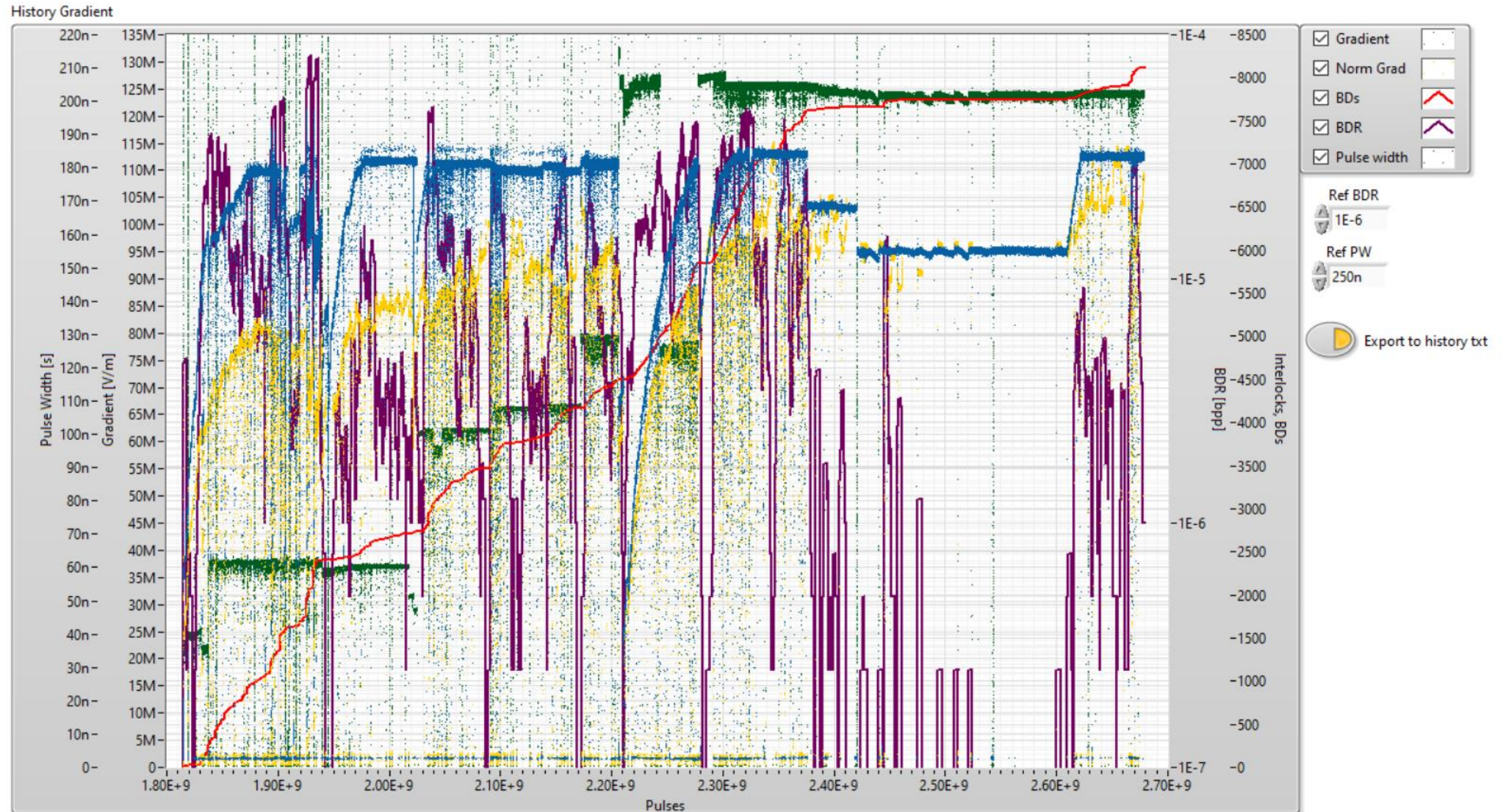
- 1.9us klystron pulse
- 200ns comp. pulse
- 150Hz rep rate per line
- **Current Power: 28.5 MW (peak)**



XBOX3 AB – Line 2

Parameters:

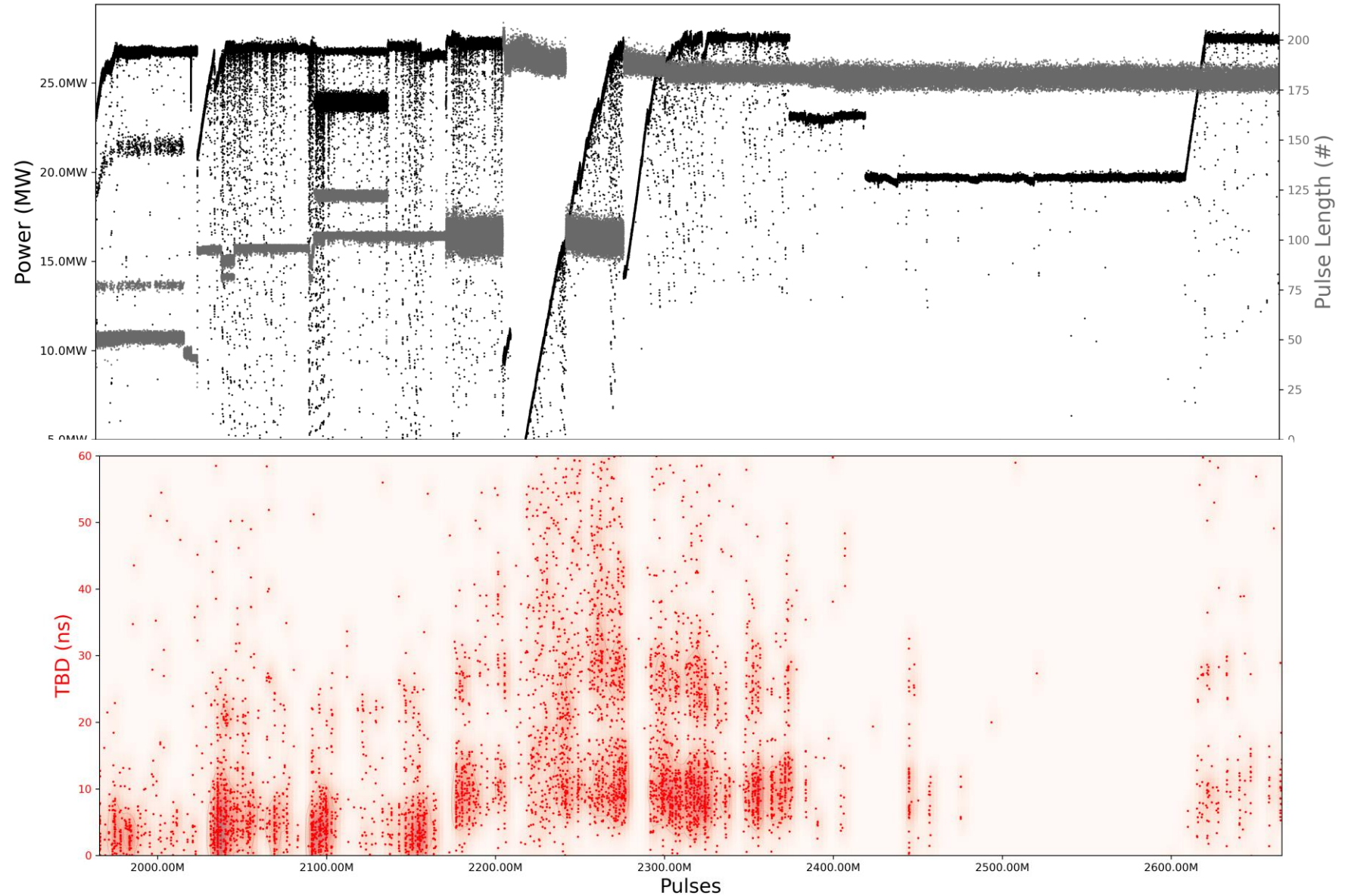
- 1.9us klystron pulse
- 200ns comp. pulse
- 150Hz rep rate per line
- **Current Power: 28.5 MW (peak)**



XBOX3 AB – Line 2

Parameters:

- 1.9us klystron pulse
- 200ns comp. pulse
- 150Hz rep rate per line
- **Current Power: 28.5 MW (peak)**



XBOX3 AB – Line 2

Parameters:

- 1.9us klystron pulse
- 200ns comp. pulse
- 150Hz rep rate per line
- **Current Power: 28.5 MW (peak)**

