



MICE CM28

PM Report

- *Progress since CM27*
- *Schedule, dates, milestones*
- *Electrical substation*
- *Visiting RAL*

Andy Nichols, STFC 4th October 2010



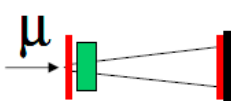
Progress since CM27

- *Steps 1 running has been completed, data being analysed now*
- *Everything behaved beautifully*
- *ISIS long shutdown has started, tentatively finishes end February, 2011*
 - *Long list of jobs being worked through*
- *Almost ready to get power out of first RF amplifier at DL*
- *RF & LH2 projects consolidated at RAL/DL – good start*
- *Spectrometer solenoid repair plan nearly ready for review, very good news*
- *Green light for electrical substation*
- *FC coil winding about to begin*
- *MICE Project Board (MPB) and MAP have met for first time*
- *Welcome CERN colleagues for help with magnetic surveying*

Present top-level MICE schedule
 Agreed by MICE – reviewed at Collaboration Meetings
 This version – March, 2010

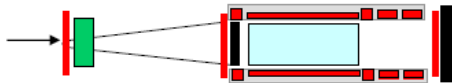
MICE Schedule as of March 2010

Run date:



STEP I

(running now)
 -> Aug2010



STEP II

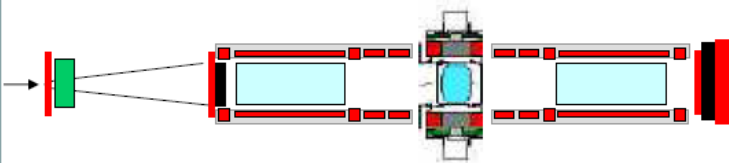
Q2 2011



STEP III/III.1

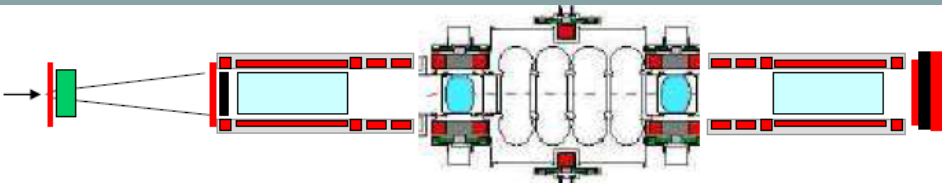
Q3-Q4 2011

See notes next slide
 For comment re Steps III
 & IV



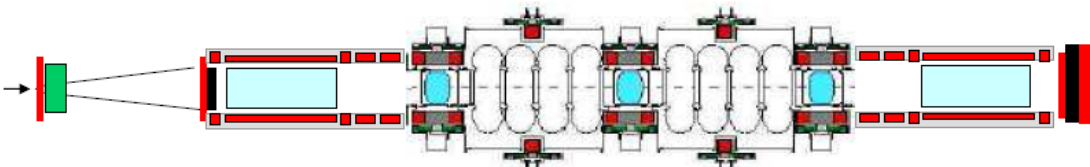
STEP IV

≥Q3 2011



STEP V

2012-2013



STEP VI

≥2013

Schedule considerations



- *The post MICE Step I schedule is now largely driven by the spectrometer solenoid delivery – see magnet talks*
- *The problems with solenoids are being understood:*
 - *A repair plan is being worked on*
 - *The review process will begin in mid-late October*
- *Points to review: thermal model, safety margin, quality control, manpower and scheduling, engineering implementation*
- *AT THAT POINT, detailed MICE project schedules and milestones will be re-baselined*
- *December 2010 should be taken as the likely date for complete acceptance of the recovery plan*
- *It's conceivable that MICE Steps II&III can be skipped to go directly to Step IV to save time, but physics and AFC practicalities then also come into the argument – see later.*
- *Physics and practical constraints for this will be explored in CM28 (October 2010)*



Electrical Substation

- *This saga is coming to a close.....*
 - *MICE Step VI needs a 2MVA electrical supply to run*
 - *UK has now found a suitable technical solution, using all new equipment*
 - *And they invented a way to pay for it!*
- *Basic (rather provisional) milestones:*
 - *Review design – Dec 2010*
 - *Tender action complete – Q2 2011*
 - *Installation complete – Q4 2011*
 - *Closure of contract – May 2012*
- *Our job now is to fit this into the MICE Hall schedule*
 - *Set priorities over experiment running and other construction*

Visiting RAL

- *Accommodation in Ridgeway House is hopefully OK now:*
 - *MICE has confirmed permanent booking of six rooms in new wing*
- *Visitor procedure is a little clearer; RAL HR now has a timetable*
- *They have a project called ‘STFC Visitor Practice’, led by Bob Innes*
- *Will have a site-wide visitor policy in place by **mid-December, 2010***
- *MICE will have to comply with this*
- *But in the meantime:*
 - *Let Rose or Andy have a copy of your passport when you arrive*
 - *Request a letter of invitation from RAL for your visit*