

Hands-On Treatment Planning Results and Cancer Data Platform

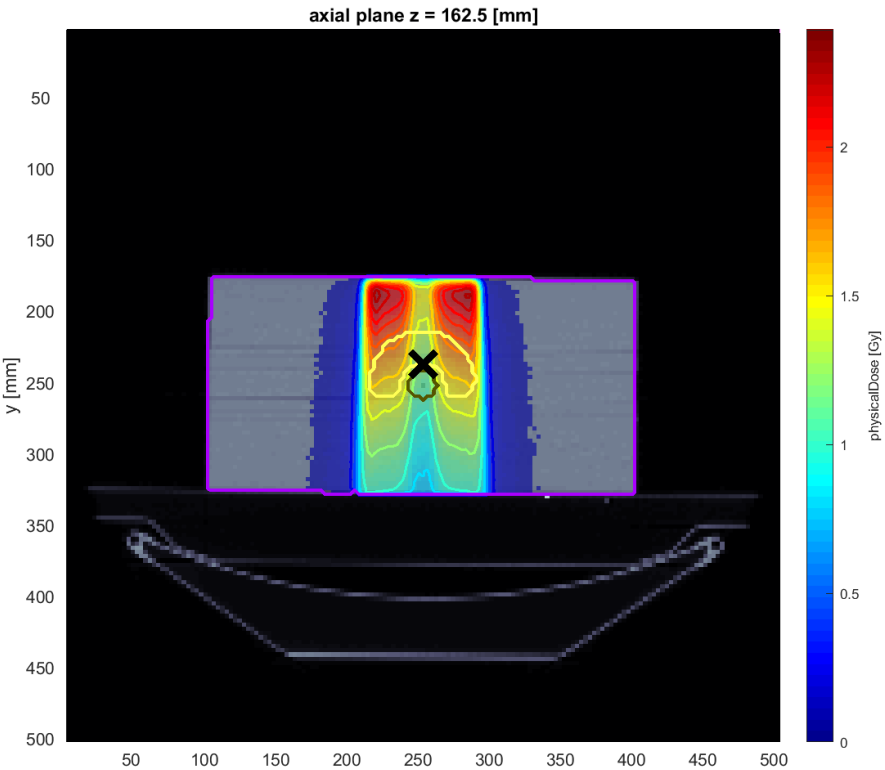
ANDRIJANA GJORESKA



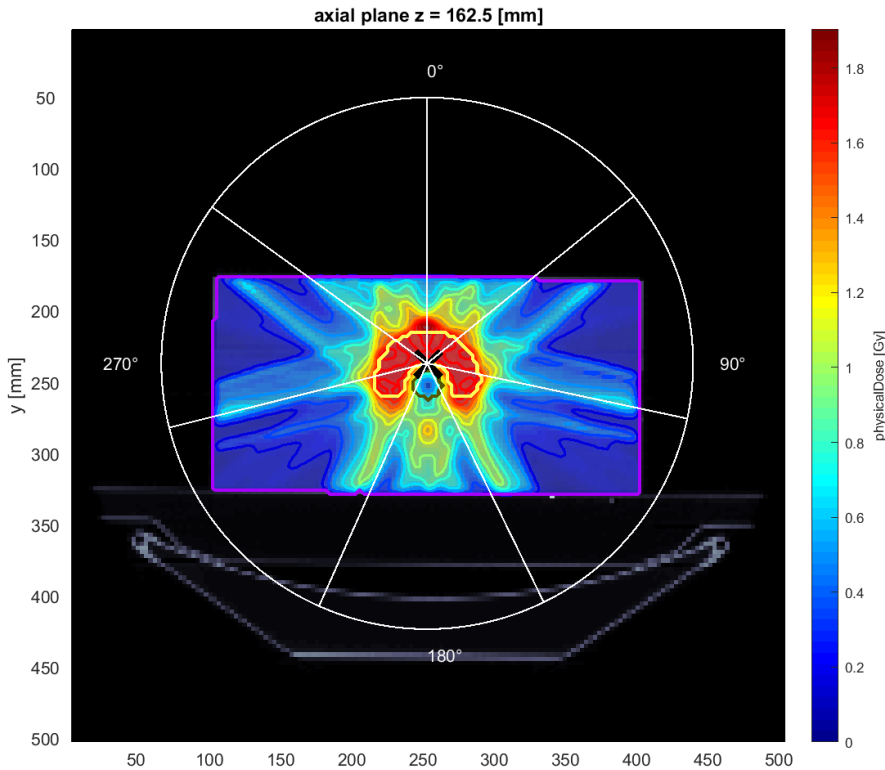
This project has received funding from the European Union's Horizon 2020 research and innovation programme under grant agreement No 101008548

Hands-On Treatment Planning Results

TG119



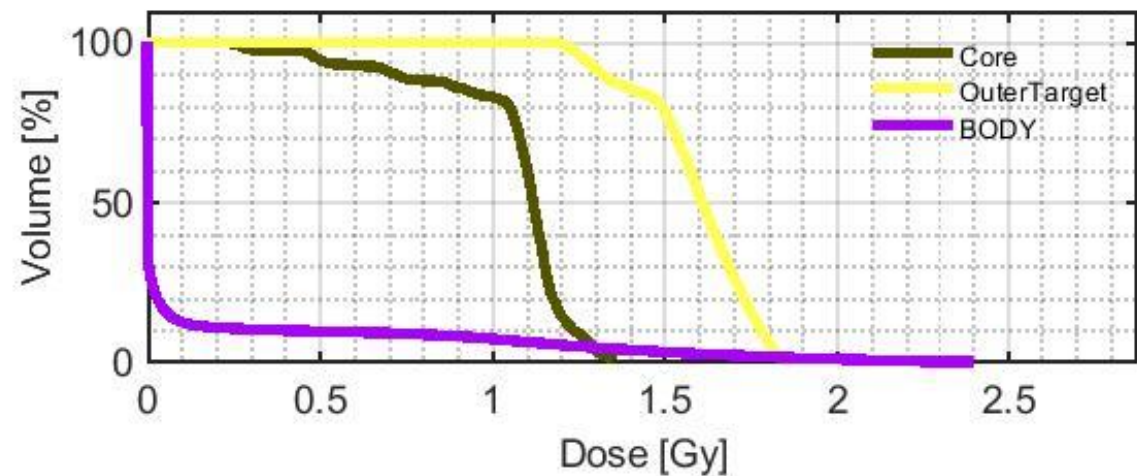
Photons – one angle



Photons –seven angles

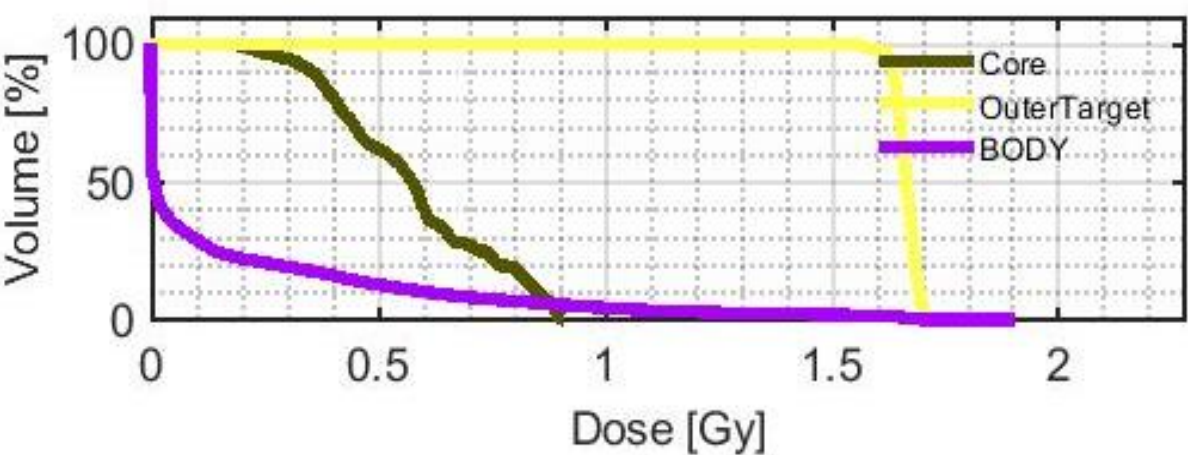
Hands-On Treatment Planning Results

TG119



	mean	std	max	min	D ₂
Core	1.0615	0.2183	1.3525	0.2364	1.3359
OuterTarget	1.5905	0.1581	1.8672	1.0975	1.8349
BODY	0.1373	0.4068	2.3969	0	1.6934

Photons – one angle

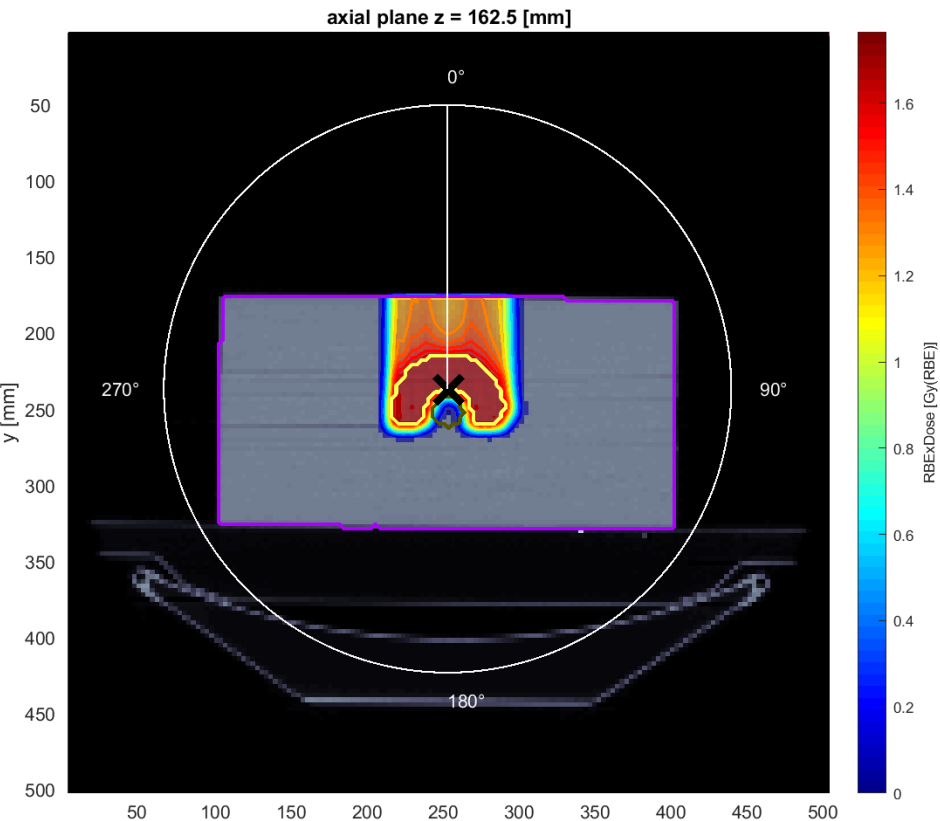


	mean	std	max	min	D ₂
Core	0.5766	0.1851	0.9118	0.1781	
OuterTarget	1.6645	0.0253	1.7350	1.5029	
BODY	0.1701	0.3367	1.9039	0	

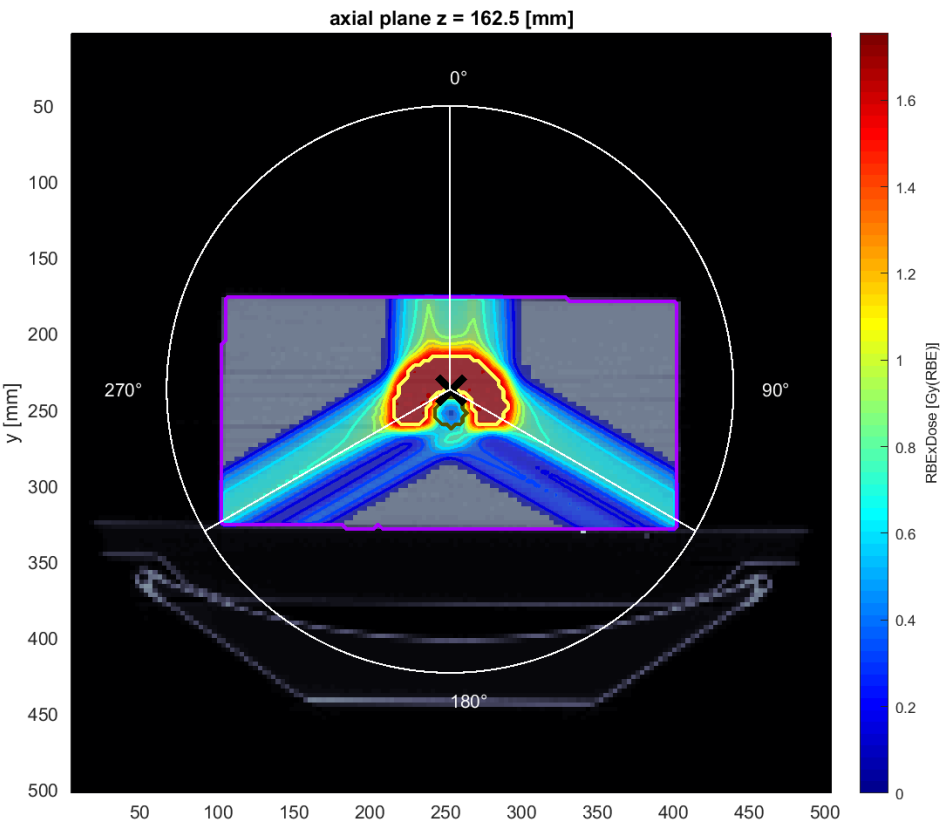
Photons –seven angles

Hands-On Treatment Planning Results

TG119



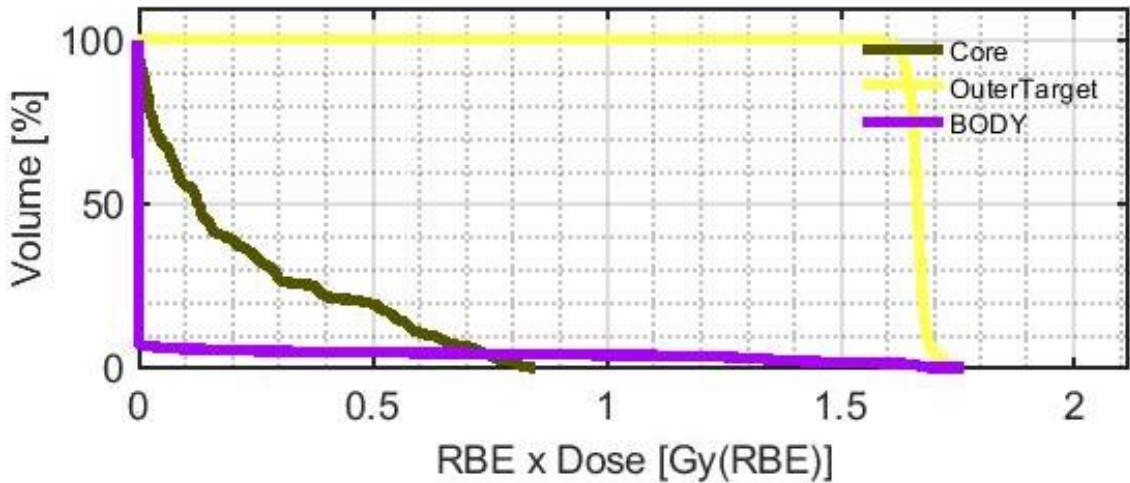
Protons – one angle



Protons – three angles

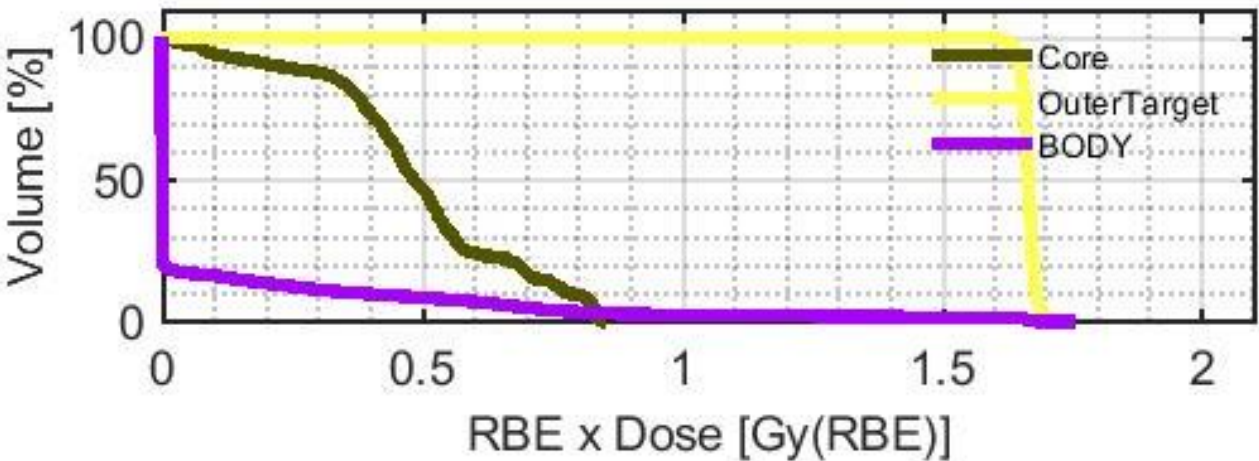
Hands-On Treatment Planning Results

TG119



	mean	std	max	min	D_2
Core	0.2258	0.2368	0.8483	0	0.7995
OuterTarget	1.6649	0.0206	1.7653	1.5506	1.7231
BODY	0.0652	0.2890	1.7653	0	1.4134

Protons – one angle

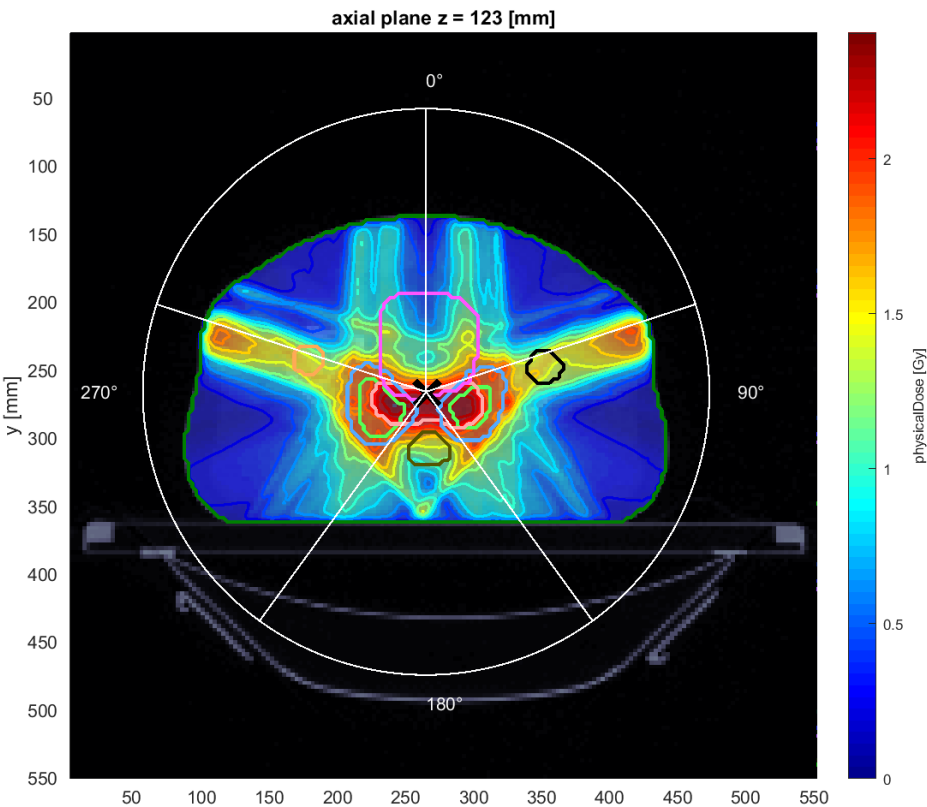


	mean	std	max	min	D_2
Core	0.4928	0.1972	0.8562	0.0152	
OuterTarget	1.6654	0.0154	1.7553	1.5429	
BODY	0.0994	0.2842	1.7553	0	

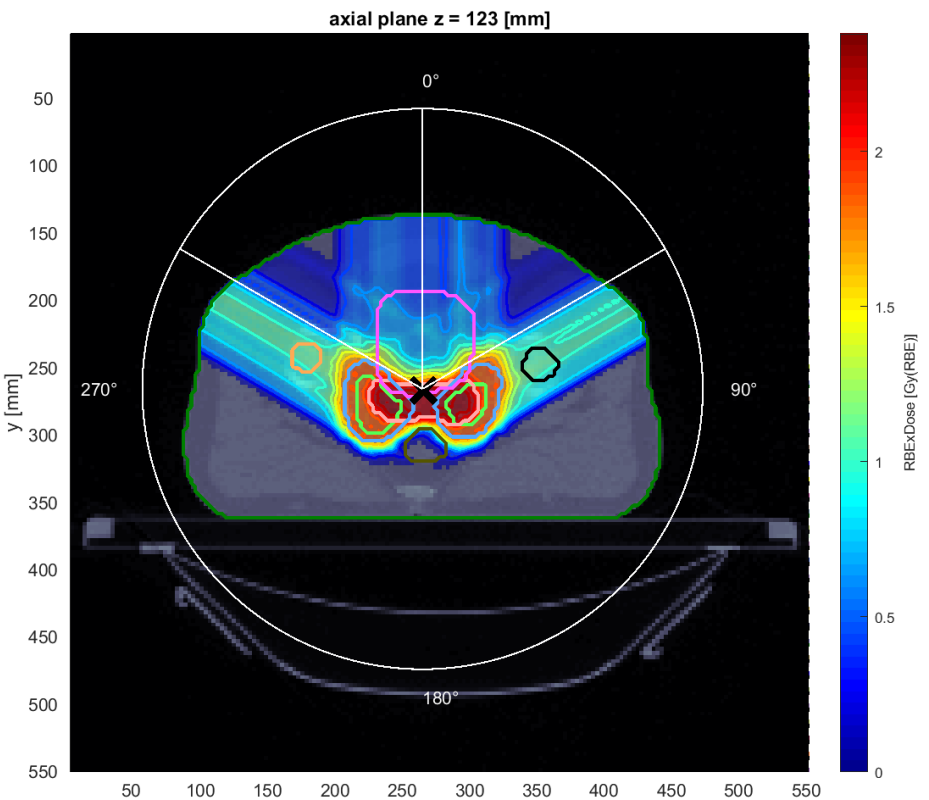
Protons – three angles

Hands-On Treatment Planning Results

PROSTATE



Photons – five angles



Protons – three angles

This project has received funding from the European Union's Horizon 2020 research and innovation programme under grant agreement No 101008548

Hands-On Treatment Planning Results

PROSTATE

	mean	std	max	min	D_2	D_5	D_50	D_95	
Rectum	1.3805	0.4796	2.2769	0.0420	2.1805	2.0572	1.5129	0.1497	^
Penile_bulb	0.1701	0.0602	0.2856	0.0892	0.2747	0.2710	0.1462	0.1013	
Lymph Nodes	1.8993	0.1010	2.4085	1.7881	2.3065	2.1756	1.8698	1.8503	
Rt femoral head	0.4340	0.4743	1.5844	5.7084e-04	1.4085	1.3041	0.2006	0.0076	
prostate_bed	2.2706	0.0304	2.3739	2.1671	2.3330	2.3219	2.2711	2.2201	
PTV 68	2.2526	0.0567	2.4085	1.9464	2.3411	2.3267	2.2618	2.1346	v

Photons – five angles

	mean	std	max	min	D_2	D_5	D_50	D_95	
Rectum	0.5512	0.6755	2.3811	0	2.2853	2.1662	0.2270	0	^
Penile_bulb	0.0627	0.0890	0.2661	0	0.2628	0.2584	0.0077	0	
Lymph Nodes	1.8982	0.1012	2.3626	1.7917	2.2956	2.2033	1.8687	1.8480	
Rt femoral head	0.2224	0.3545	1.1426	0	1.0481	0.9310	0	0	
prostate_bed	2.2655	0.0127	2.3492	2.2018	2.2911	2.2851	2.2660	2.2438	
PTV 68	2.2595	0.0368	2.3811	1.9235	2.3175	2.3030	2.2650	2.1829	v

Protons – three angles

Cancer Data Platform

- Current practices
- Heavy Ion Therapy
- Selection of patients
- Platform for sharing medical data

THANK YOU FOR YOUR ATTENTION!
