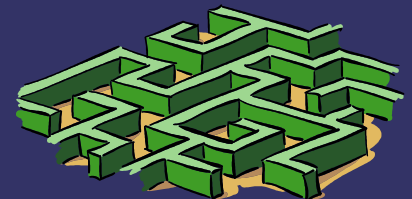


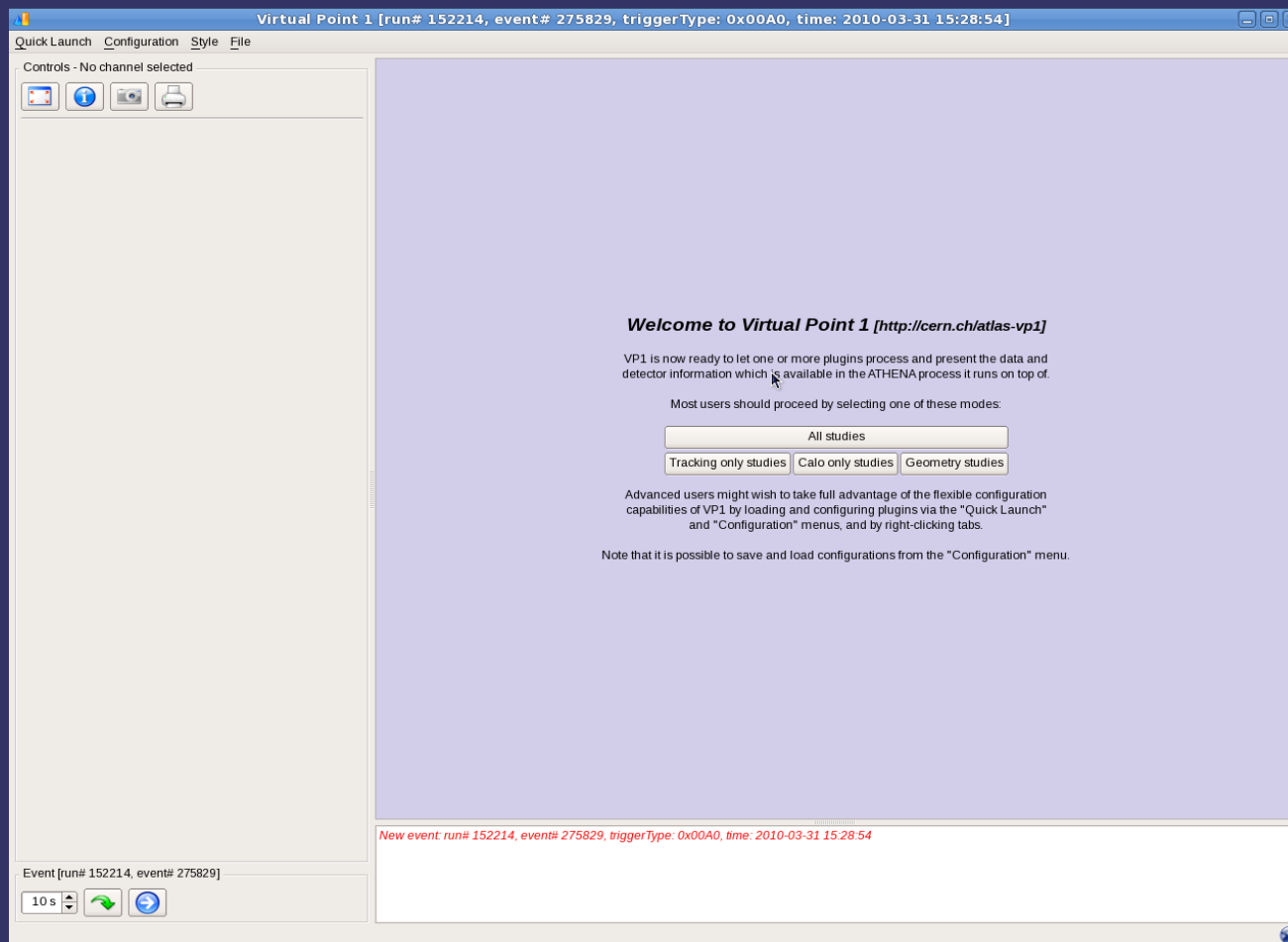
Virtual Point 1

Giorgi Gvaberidze
GCCEC/TGU
Oct 29, 2010

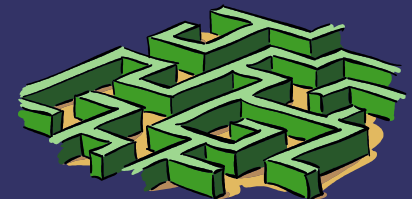


VP1

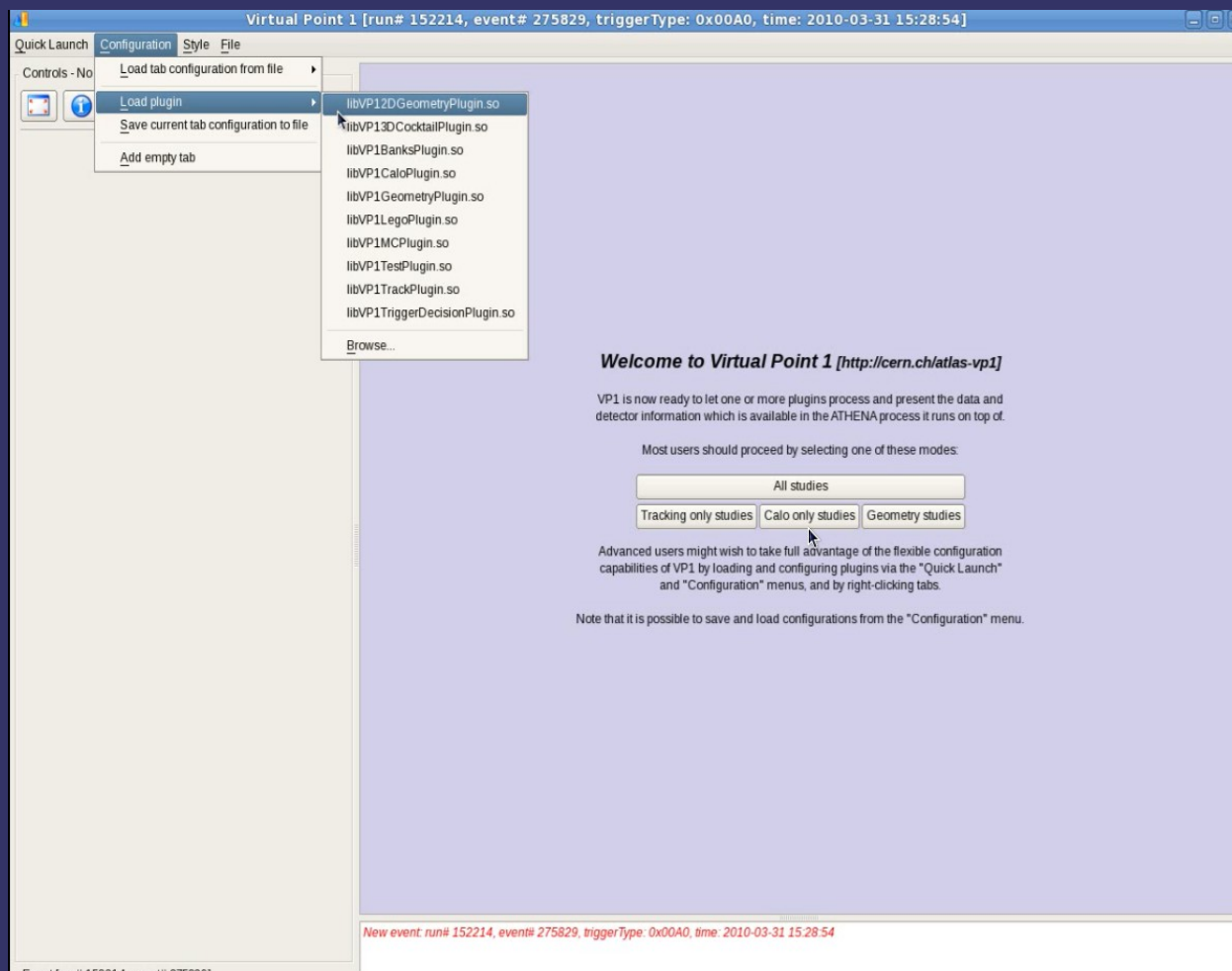
➔ VP1(Virtual Point 1) is an Event Display for the ATLAS experiment at CERN



It's launched from Athena and has access to everything in that framework(StoreGate, services, etc).



Main framework extends functionality from plugins



Develop plugins for VP1
Is easy. Everything
already prepared.

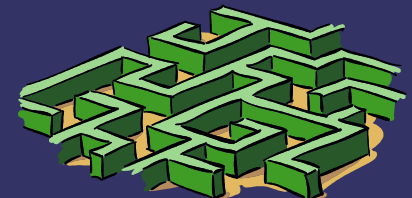
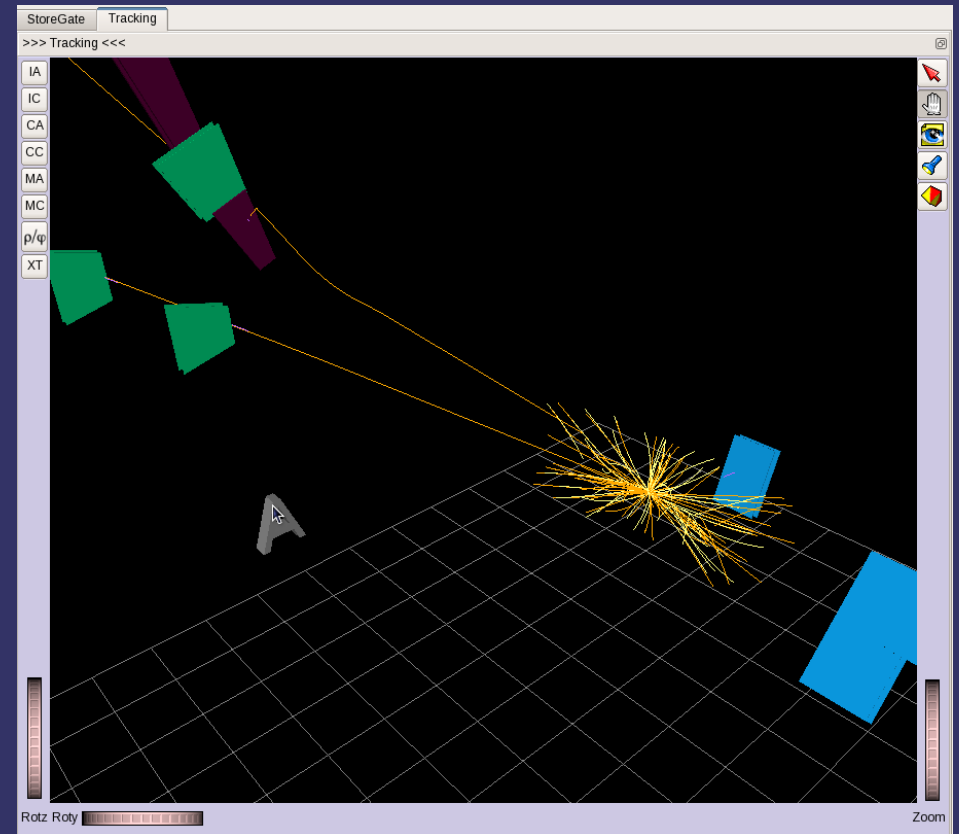
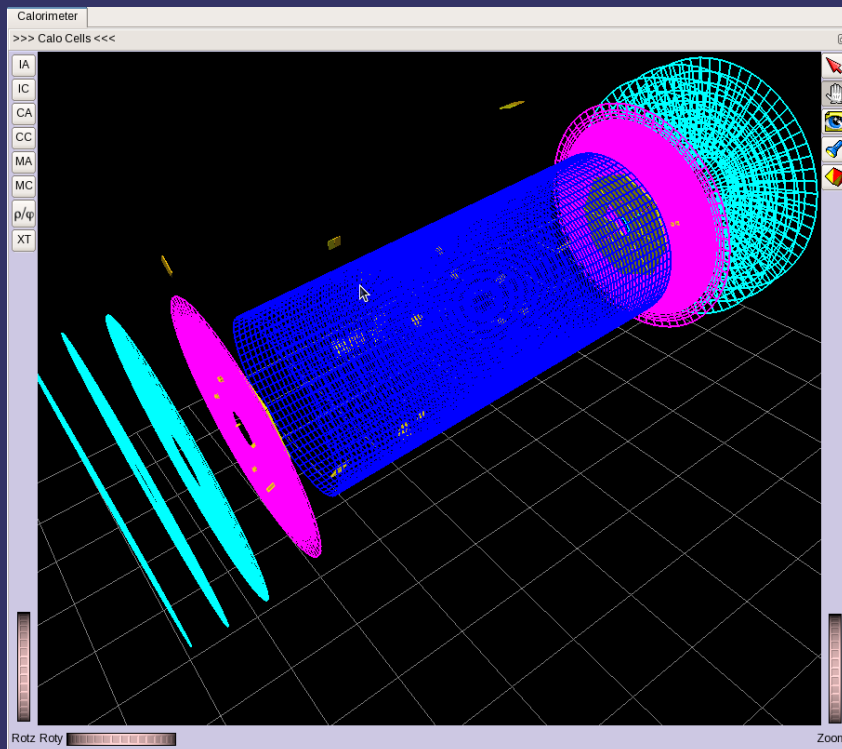


VP1 provide visual services

Tracks

Vp1 provide tools for visualize detector components and processes.

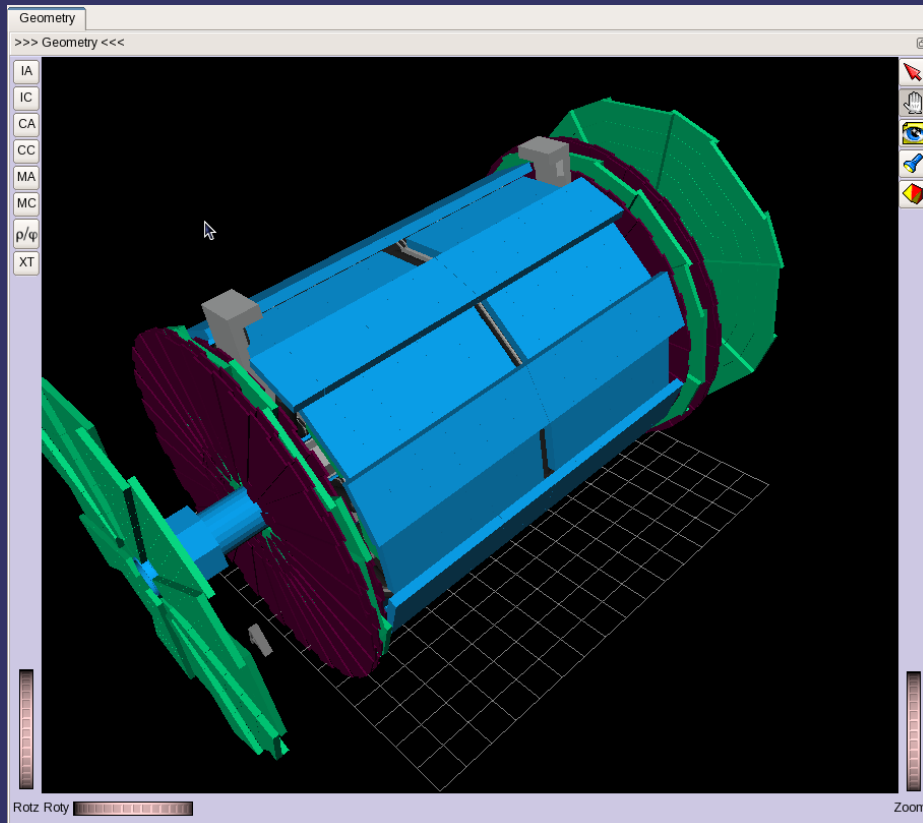
Calorimeter



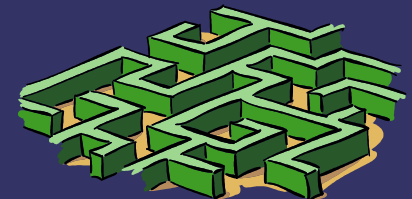
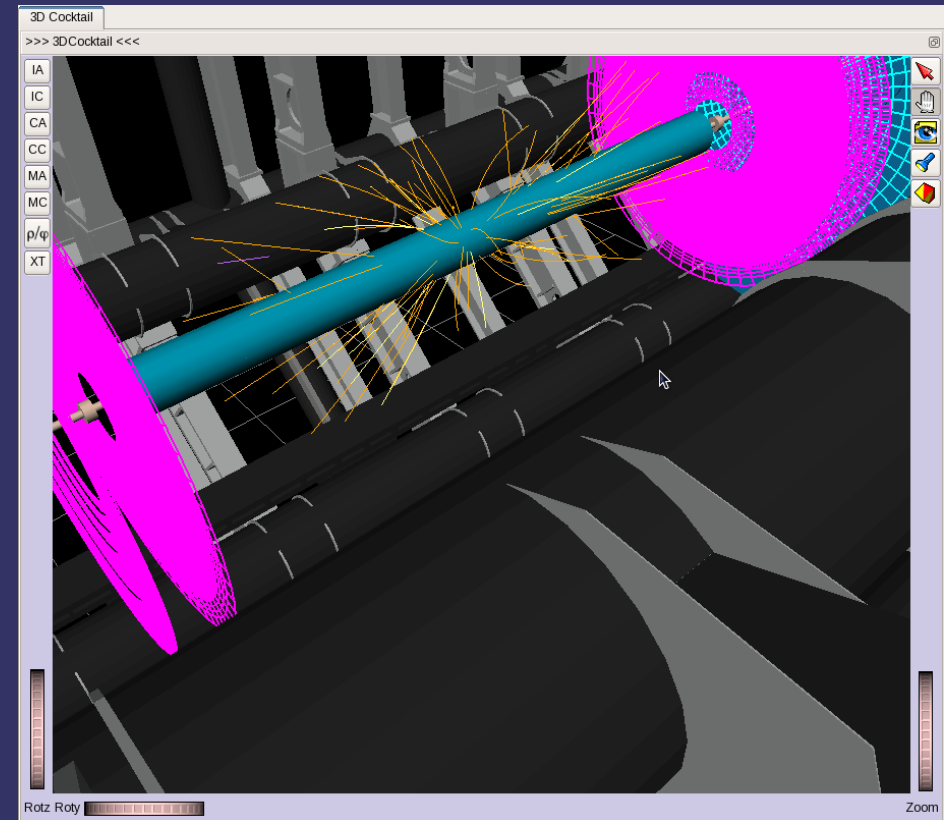
VP1 has several visualize regimes.

1. Geometry studies.
2. Tracking only studies.
3. Calo only studies.
3. All studies

Geometry

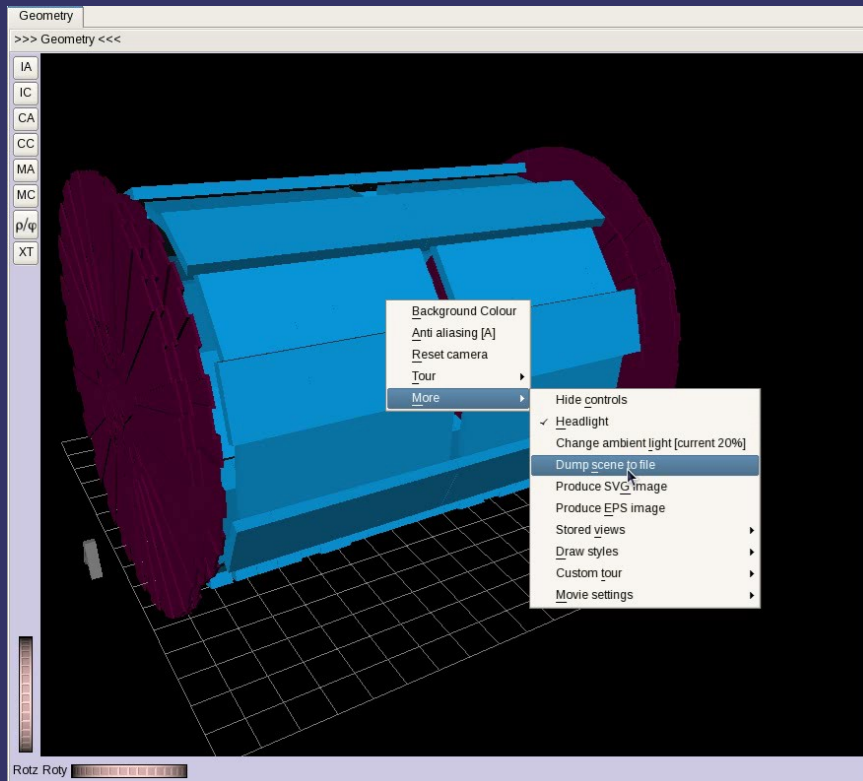


3D Cocktail



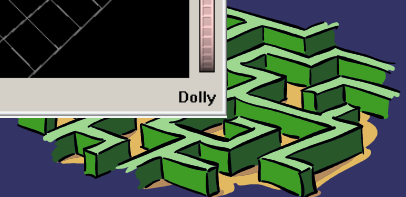
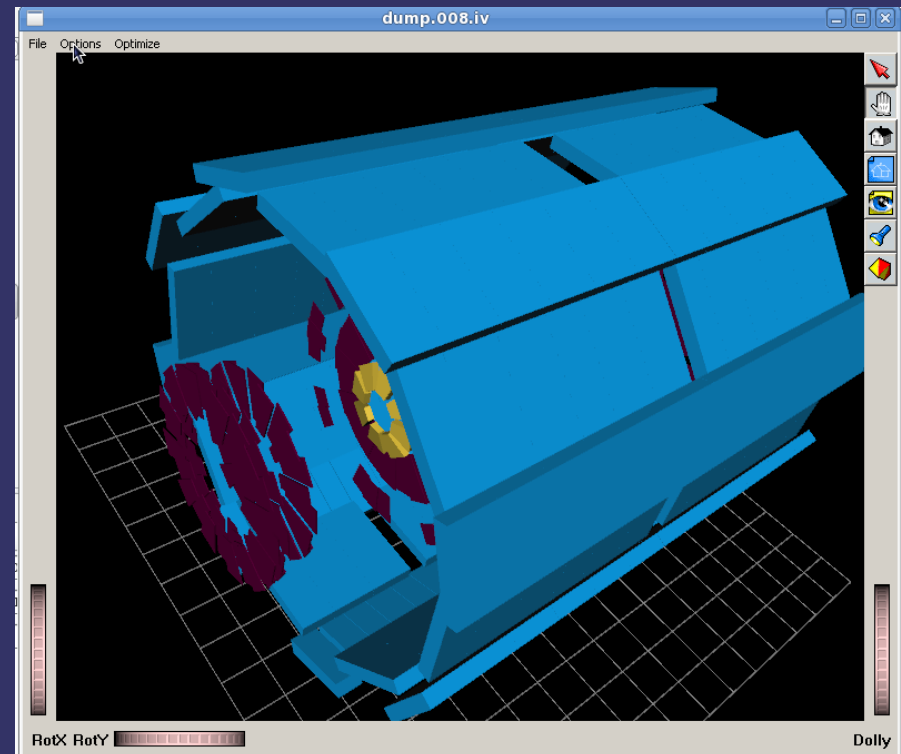
Also provide another usefully tools.

Save 3D scene *.iv file



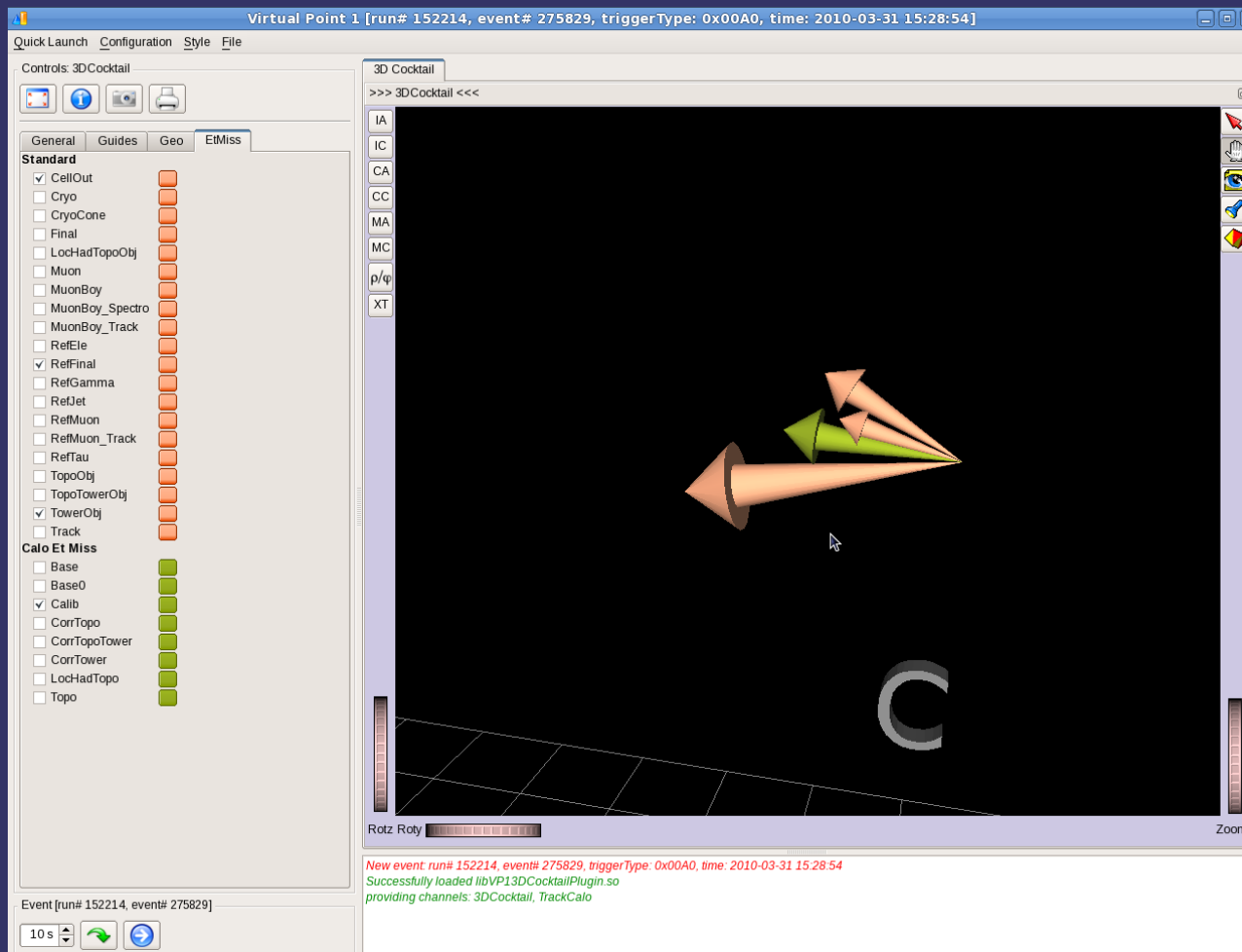
For sample there is tool for saving active 3D scene in *.iv format. And then visualize in inventor based editor for view/edit/presenting without launching Athena/VP1

Open *.iv file in iView

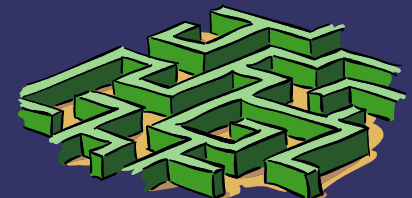


VP1MissingEtSystems

Basic version of VP1MissingEtSystems



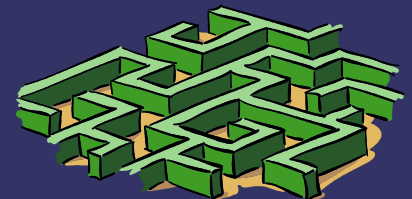
MissingEt is method to measure momenta of particles that don't interact in the detector from the summed momentum imbalance in the detected particles.



VP1MissingEtSystems

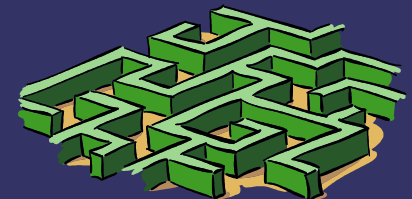
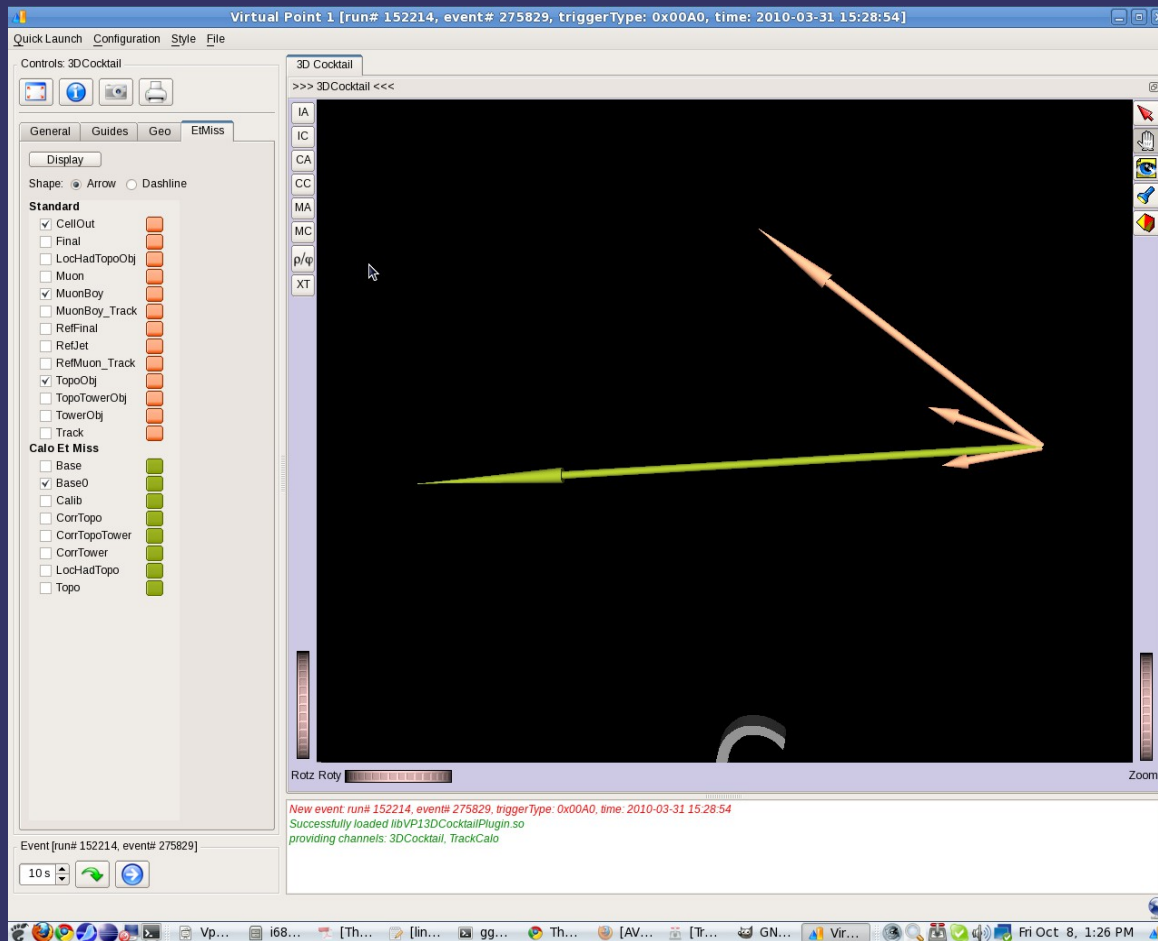
Modification Task

- ➔ Add dash line
- ➔ Choose between arrow/dashlines
- ➔ Controlling display attributes for arrow/dashline
- ➔ Prevent loading Null length(Energetic) systems



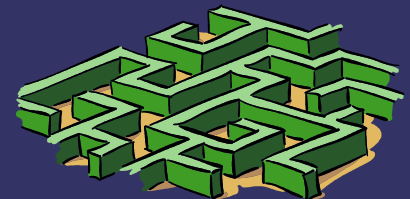
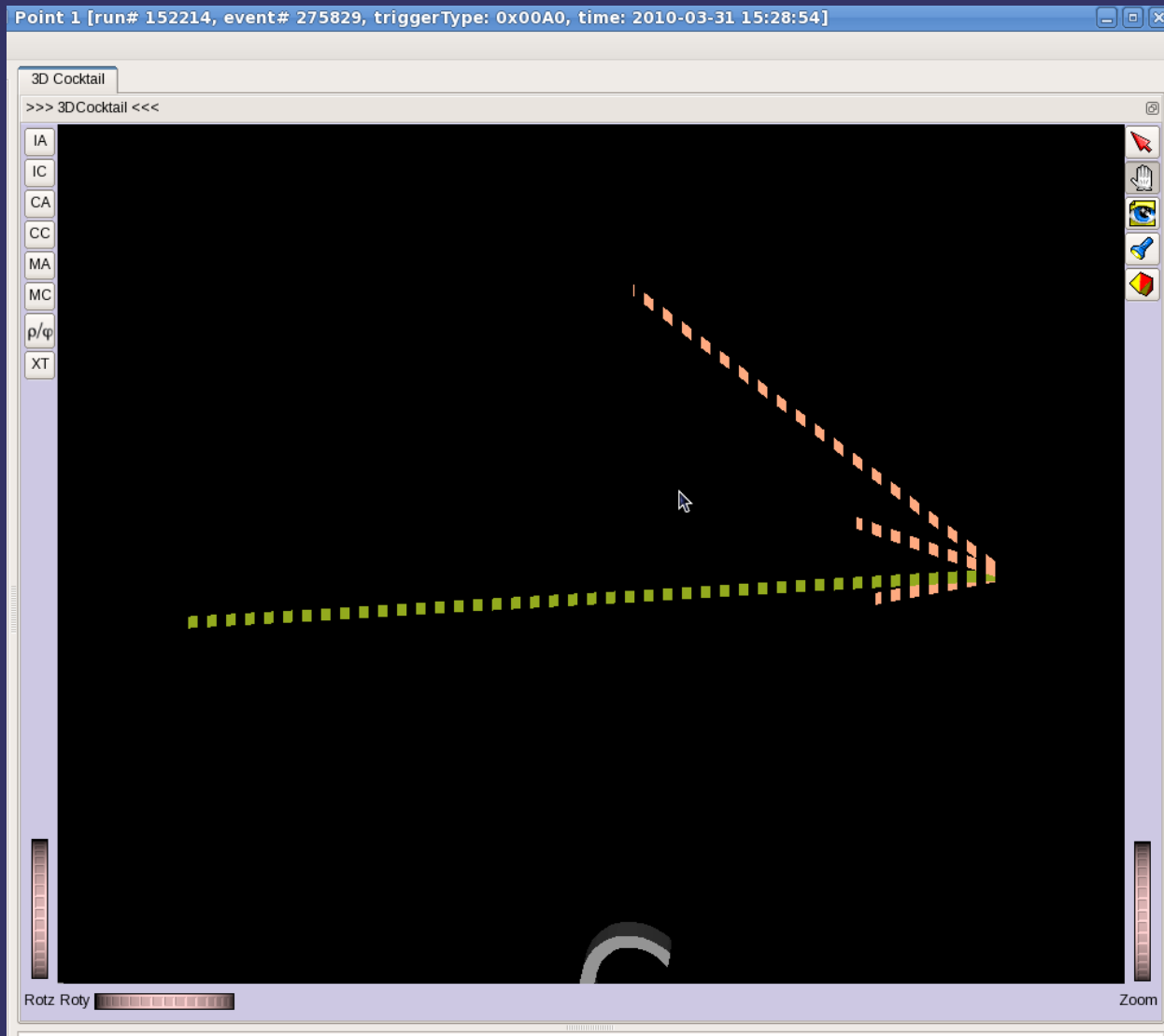
VP1MissingEtSystems

- ➔ Updated arrow and prevented loadings of null length systems



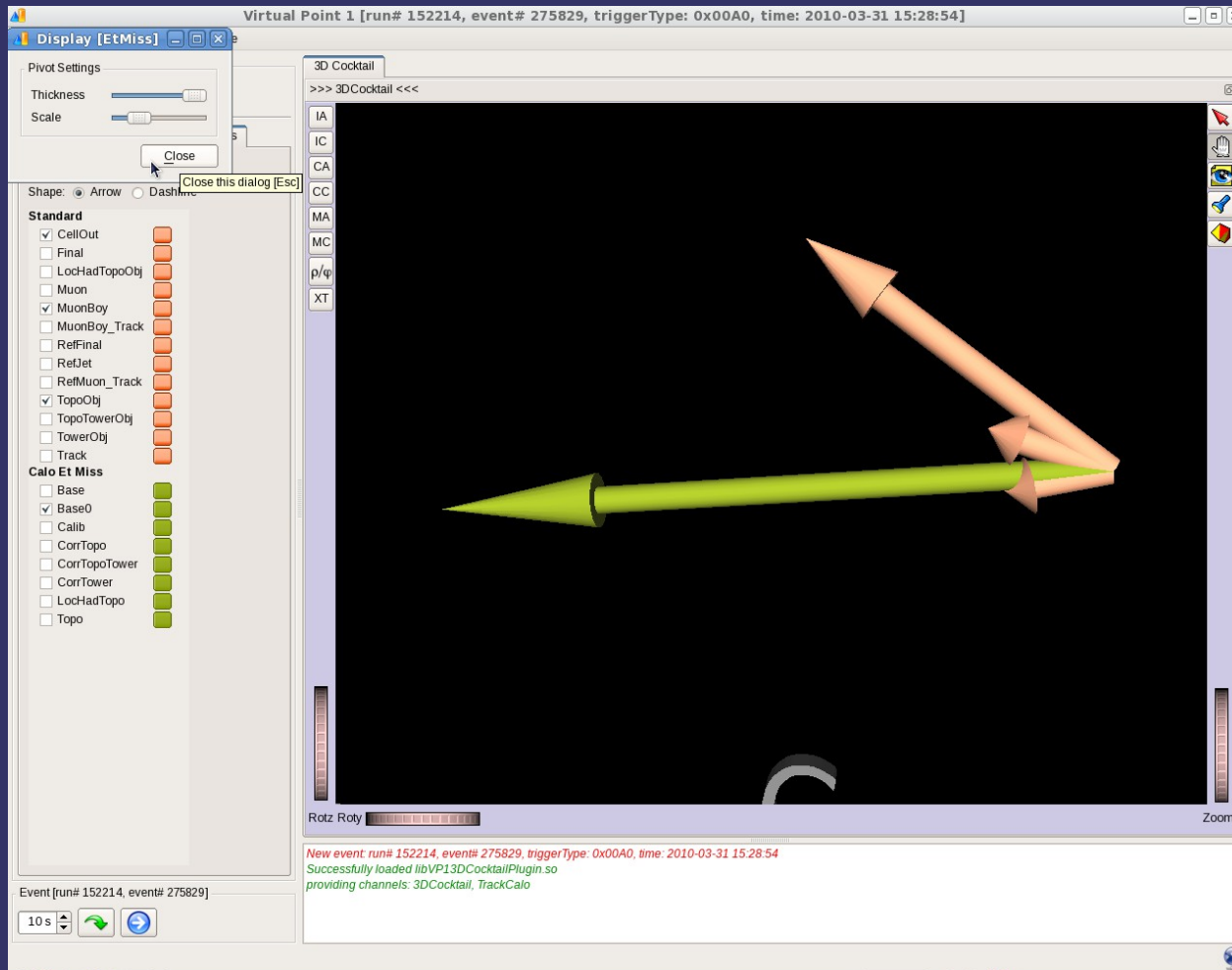
VP1MissingEtSystems

➔ Dashlines

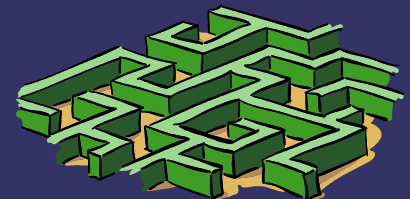


VP1MissingEtSystems

➔ Display options for arrow/dashline

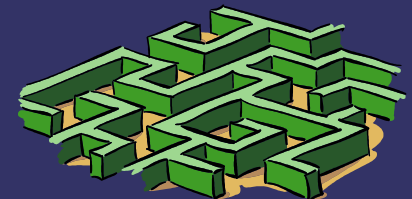
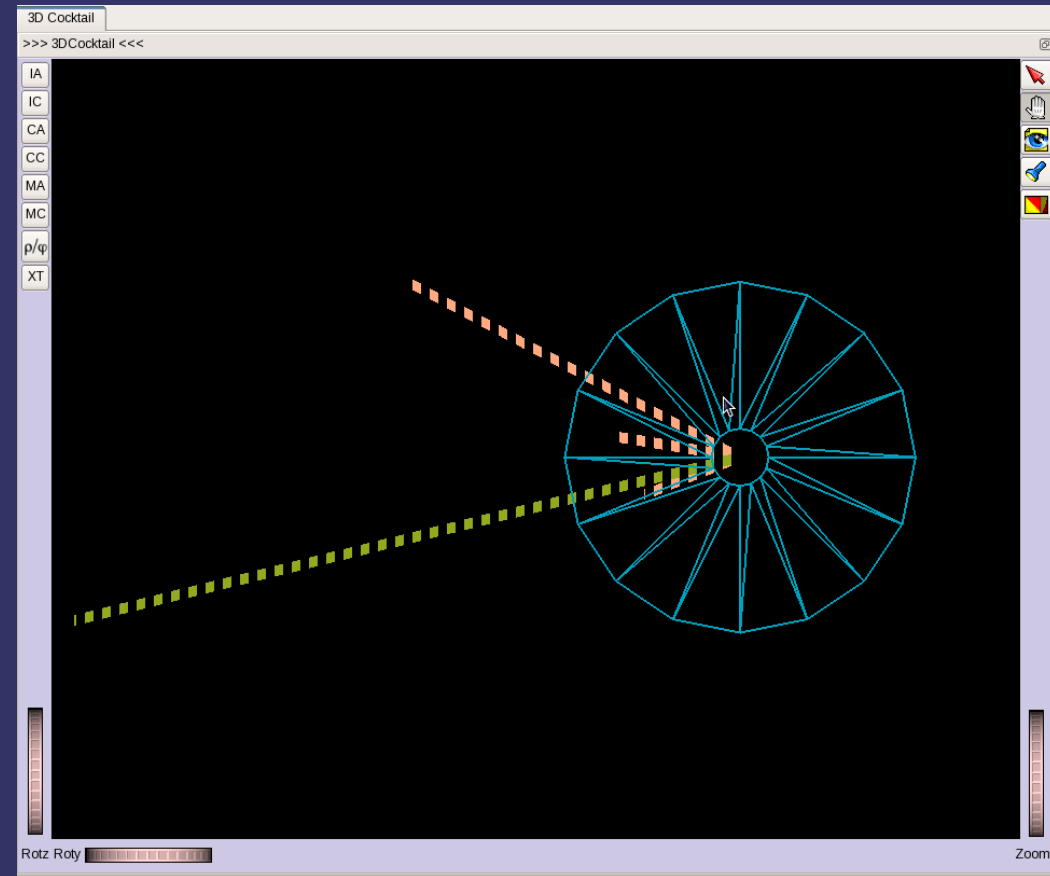
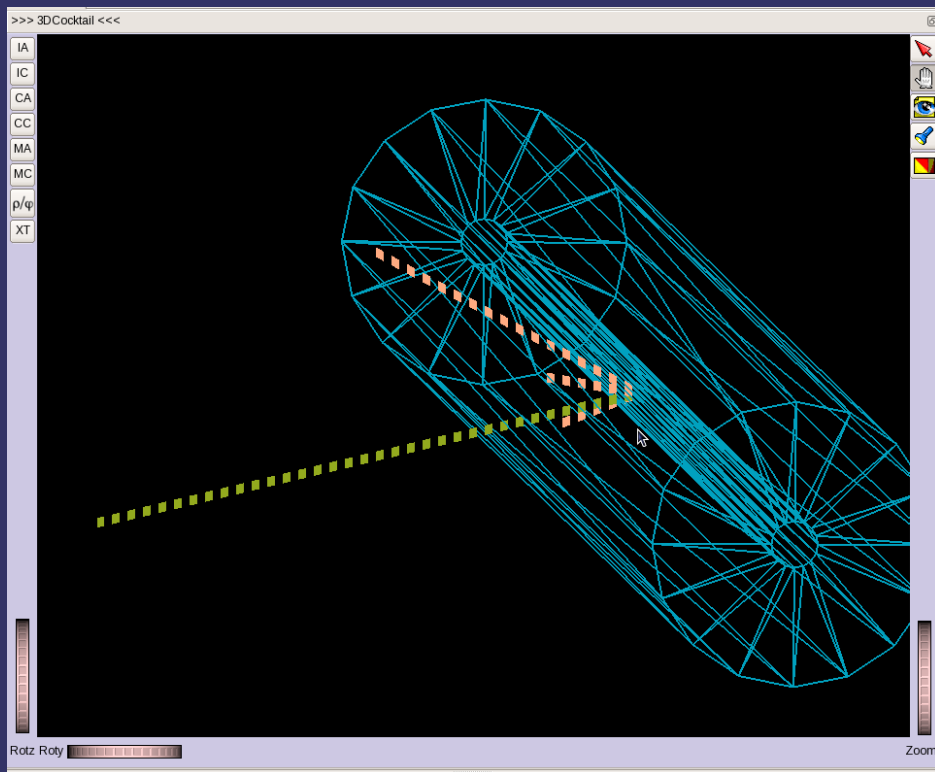


Now is possible to select type of visual vector (arrow or dashline), to simply switch select button.



VP1MissingEtSystems

➔ Usefully for projected view



Boolean Processor

➔ Current state

