

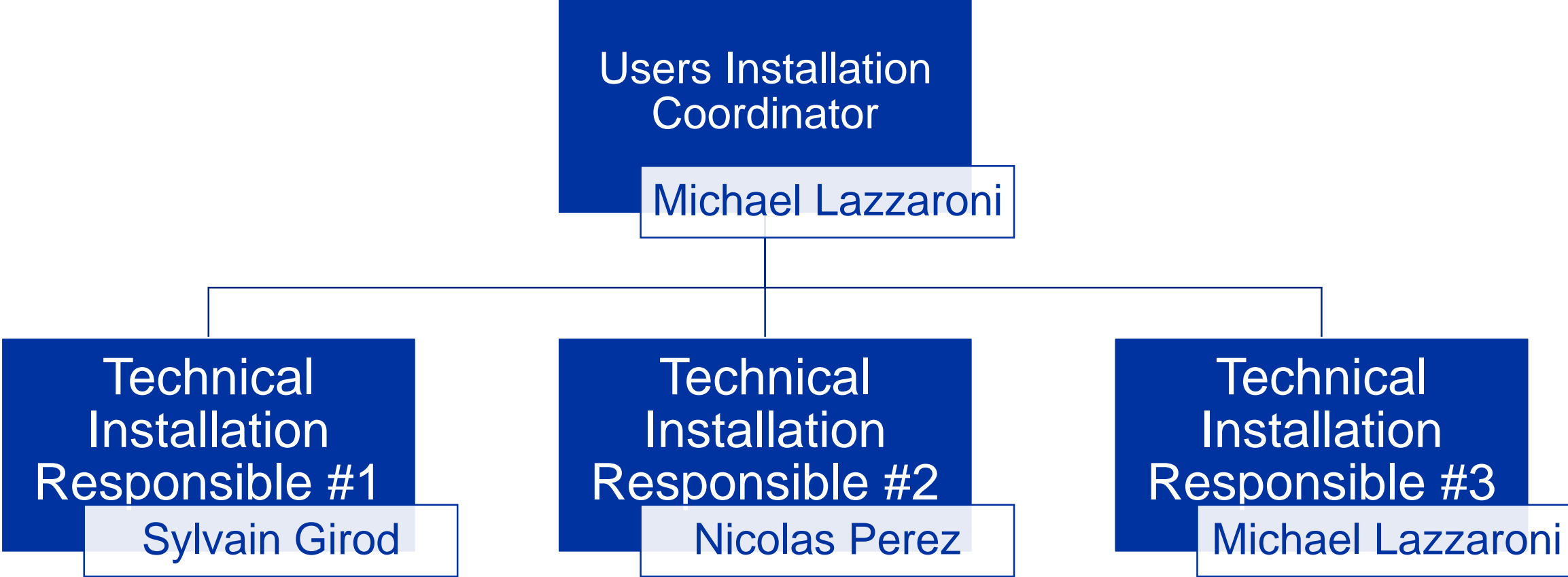
**May 2021**

# **Users Meeting – Installation**

Michael Lazzaroni BE-EA-DC

# Installation Organization in North Area

---



# Installation Process



Preparation before your arrival



Your arrival in EHN1 - Installation



End of your beam time period

**Technical meeting 3-4 weeks prior** the experiment installation:

- Technical discussion of your set-up;
- Presentation of our infrastructure;
- Answer your questions;

and give you the maximum support to **help you and us to have an efficient installation in our facilities**☺

*(details in the next slide)*

Installation the “D” day :

- Ensure that your **equipment are ready to be moved in the EA** by the Transport team **in the morning** (exact hour will be communicated).
- All **late requests** will be treated at the **end of the day** (to not disturb the whole installation planning).

De installation at the end of your beam time period:

- **Removal of all equipment** in the EA and CR the Wednesday **ASAP**.
- **Checkout** of the EA and CR with us to be sure that **all your equipment have been removed**.

# Technical meeting (3-4 weeks prior your installation)

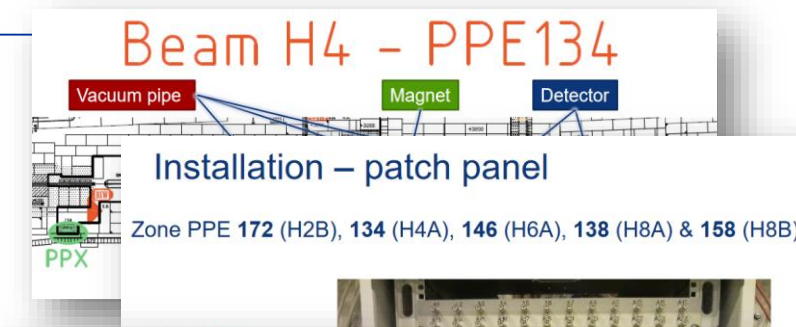
- **Technical points to discuss concerning your installation:**

- Preparation of the zone according your requirements, in term of:

- Beam line configuration (your detectors, vacuum pipes ...)
- Cabling, patch panel needs
- Mechanical support for your set-up (DESY tables, concrete blocks...)
- General Services: electrical power needs...
- Technical services provided by BE-EA
- Gas (Reminder : make your gas request ASAP to David Jaillet)

- Preparation of your arrival:

- Quantity of material (storage place)
- How to prepare “transport request” via EDH to unload your material
- CERN requirements to handle your material safely



## Services in BE-EA – Useful technical contacts

- BE-EA provides technical services to users, in term of:

Cabling Connectors, cables, cabling...

• [be-dep-ea-as-cabling@cern.ch](mailto:be-dep-ea-as-cabling@cern.ch)

8744491 - Stockage et/ou Transport Interne

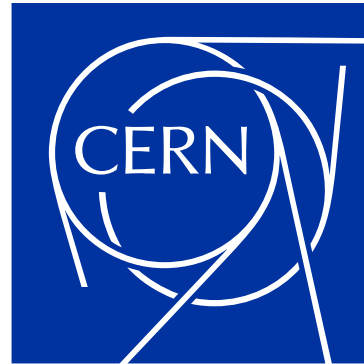
Créé par MICHAEL LAZARINE (BE-EA) le 06.09.2023 17:22 Dernière modification le 04.09.2023 17:20  
Créé par TRICE

Installation

Provide adequate attachment points for lifting operations !

Detector

The screenshot shows a technical document with a diagram. The diagram illustrates a lifting operation. A red lifting eye is attached to a black detector. Two yellow cables are attached to the lifting eye and extend upwards to a blue hook. A red 'no' symbol is shown next to a red lifting eye, indicating that it is not to be used. The text 'Provide adequate attachment points for lifting operations !' is written below the diagram. The word 'Detector' is written at the bottom of the diagram.



Thanks for your attention!

<https://cern.ch/be-dep-ea>

# Services in BE-EA – Useful technical contacts

---

- BE-EA provides technical services to users, in term of:

**Cabling** Connectors, cables, cabling...

---

- [be-dep-ea-as-cabling@cern.ch](mailto:be-dep-ea-as-cabling@cern.ch)

**Workshop** Machining, installation...

---

- [Gianluca.Canale@cern.ch](mailto:Gianluca.Canale@cern.ch)

**Gas** Supply of CO<sub>2</sub>, He, N<sub>2</sub>....

---

- [David.Jaillet@cern.ch](mailto:David.Jaillet@cern.ch)

**Moveable tables** Desy tables, Saphir, XSCA...

---

- [Nicolas.Perez@cern.ch](mailto:Nicolas.Perez@cern.ch)