

Anomalies and Precision in the Belle II Era Hybrid Workshop

06-08 September 2021
Schlosspark Mauerbach & Remote Locations



ÖAW

ÖSTERREICHISCHE
AKADEMIE DER
WISSENSCHAFTEN



Anomalies and Precision in the Belle II Era Hybrid Workshop



Welcome everyone!



Anomalies and Precision in the Belle II Era Hybrid Workshop



It is an amazing time for our communities, many tensions with SM prediction are appearing and seem to point toward the same possible explanation (*LFUV: all leptons are equal, but some leptons are more equal than others*)

Through precision tests of the SM we will be able to understand the origin of the so-called anomalies in few years (not 50...)

Anomalies and Precision in the Belle II Era Hybrid Workshop



This workshop should serve as a baseline to discuss anomalies and evaluate some possible future research directions.

- Is there a common link between different anomalies?
- Are we leaving any stone unturned?
- Belle II is collecting an essential set of data. What can this reveal?
- What's the interplay between B meson decay and tau, dark sector physics, or high energy (TeV) physics?

Anomalies and Precision in the Belle II Era Hybrid Workshop



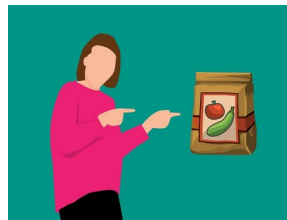
40 planned contributions
20 presented remotely and 20 in-person



Monday: $b \rightarrow qll$ transitions
Tuesday: $b \rightarrow clv$ transitions & $g-2$
Wednesday: τ physics & dark sector

Anomalies and Precision in the Belle II Era Hybrid Workshop

- Coffee breaks will take place at the allocated times in the foyer outside the conference room
- Water (normal and sparkling) is always available at the drinks table
- Coffee, tea, juices, apples, etc. always available in the foyer
- Lunch takes place at the allocated time (13:00 to 14:00) in the restaurant, 1 soft drink included
- Dinner and breakfast (as part of each participant's booking) in the restaurant



Anomalies and Precision in the Belle II Era

Tuesday afternoon, free from 15:45



Please upload your slides **before** the beginning of your session (i.e. during coffee breaks or breakfast)



Anomalies and Precision in the Belle II Era - Workshop

6-8 September 2021
Europe/Vienna timezone

Enter your search term

- Overview
- Timetable**
- Contribution List
- My Conference
 - My Contributions
- Registration
- Participant List
- Venue
- Workshop Topics & Speakers

Timetable

Mon 06/09 | **Tue 07/09** | Wed 08/09 | All days

Print PDF Full screen Detailed view Filter

Session legend

● Break ● Session on b->cnu transitions ● Session on g-2

09:00	Fits to $B \rightarrow D^* l \nu$ with novel techniques to determine $ V_{cb} $ and form factor (Remote)	Daniel Ferlewicz 09:00 - 09:15
	A FB in semileptonic decays at Belle II	Manca Mrvar 09:20 - 09:35
	$b \rightarrow c \tau a \nu$ overview and Belle II prospects	Luka Santelj 09:40 - 10:05
10:00	Stretch your legs	10:10 - 10:20
	The $R(D^{(*)})$ anomaly and new physics (Remote)	Monika Blanke 10:20 - 10:40

Anomalies and Precision in the Belle II Era Hybrid Workshop

06-08 September 2021
Schlosspark Mauerbach & Remote Locations

We wish you a great time!



ÖAW

ÖSTERREICHISCHE
AKADEMIE DER
WISSENSCHAFTEN



European Research Council
Established by the European Commission

