

Status of 2D efficiencies. DVCS 2016 P07 μ^-

Anatolii Koval, NCBJ, Warsaw

May 28, 2021

2D efficiencies. DVCS 2016 P07 slot 6 μ^- cuts

Bad spill cut

- **List source.** `ssh://git@gitlab.cern.ch:7999/compass/dvcs_sidis/data_quality/bad_spill.git/bad_spill.lst/bad_spill.P07slot4.lst`
- **Generation.**
`listBadSpills bad_spill.P09slot3.lst LAST Middle Ladder Outer Flux > bad-spills.txt`

Flux cut

- **Flux files.** `ssh://git@gitlab.cern.ch:7999/compass/dvcs_sidis/flux/flux_files.git/flux_Johannes/2016/flux.values`

Bad channel cuts

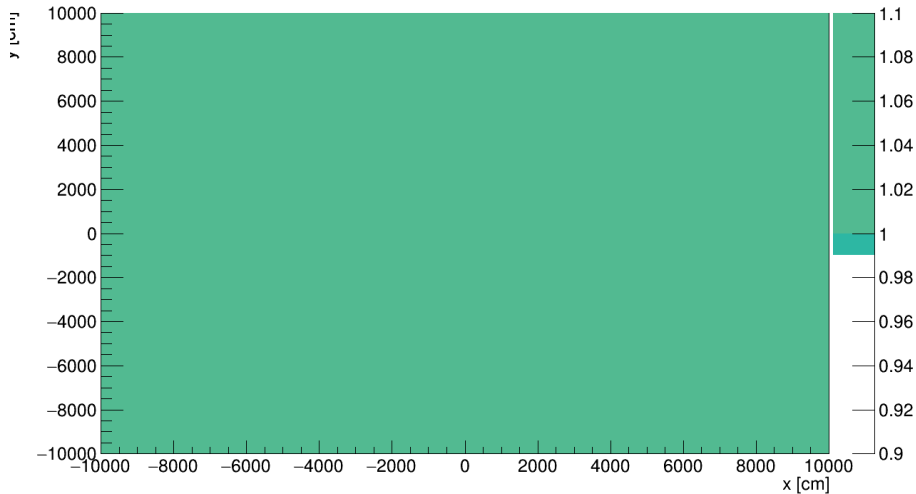
- **Unstable Channels list.** `Frontera:
/scratch3/06955/akoval/coral.p07.scalade/template-P07/slot6/UnstableChannelsList.2016P07.txt`

CORAL setup with ESCALADE

- 0 found hits for
 - all GEMs: GM
 - some Pixel GEMs: GP02 (U1, V1, X1, Y1), GP03 (U1, V1, X1, Y1)
 - some Scintillating Fibres: FI03
- all the other detectors are fine

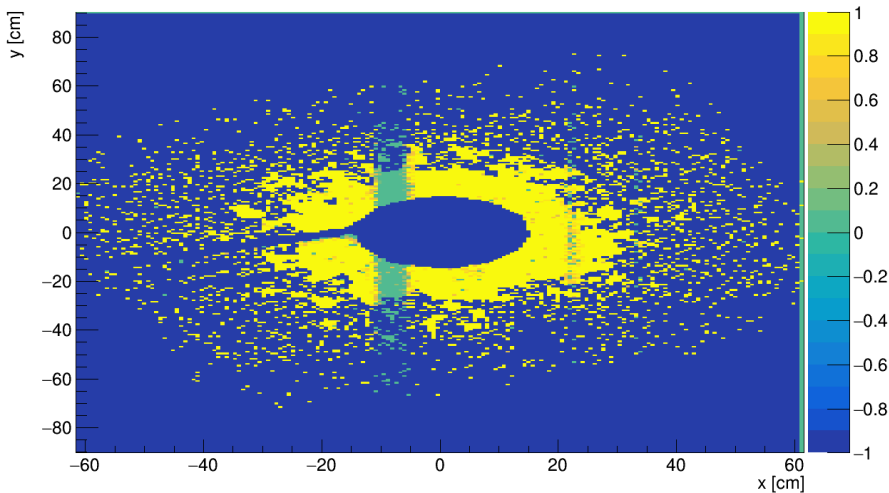
Zeros

Detector FI03Y1__ VSB2 1 in year 2016_P07_MINUS : MeanEffic: 1.000000



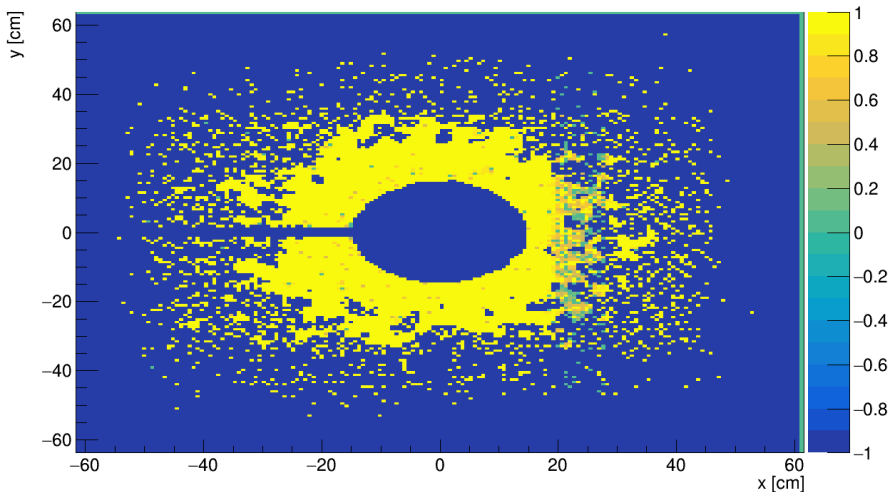
Examples

Detector DC01U2__SDB6 2 in year 2016_P07_MINUS : MeanEffic: 0.973643



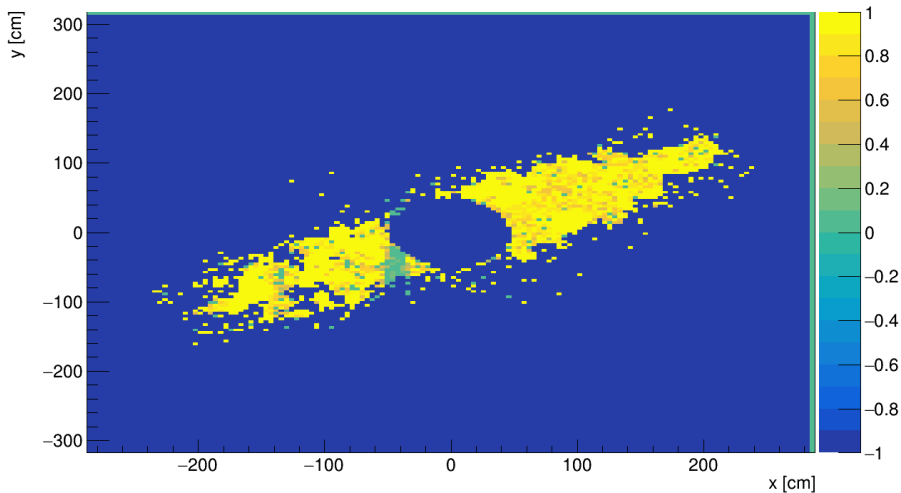
Example

Detector DC00X2__SDB4 1 in year 2016_P07_MINUS : MeanEffic: 0.971611



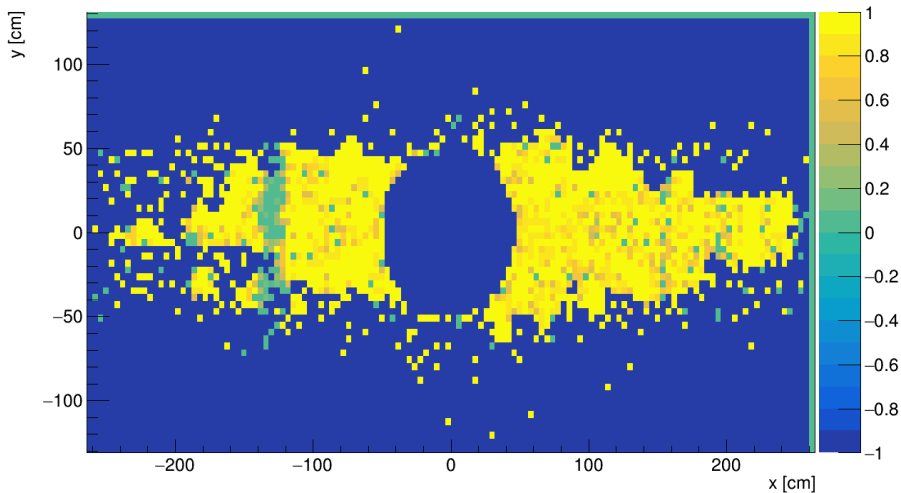
Example

Detector DW06U2__DW62 1 in year 2016_P07_MINUS : MeanEffic: 0.910438



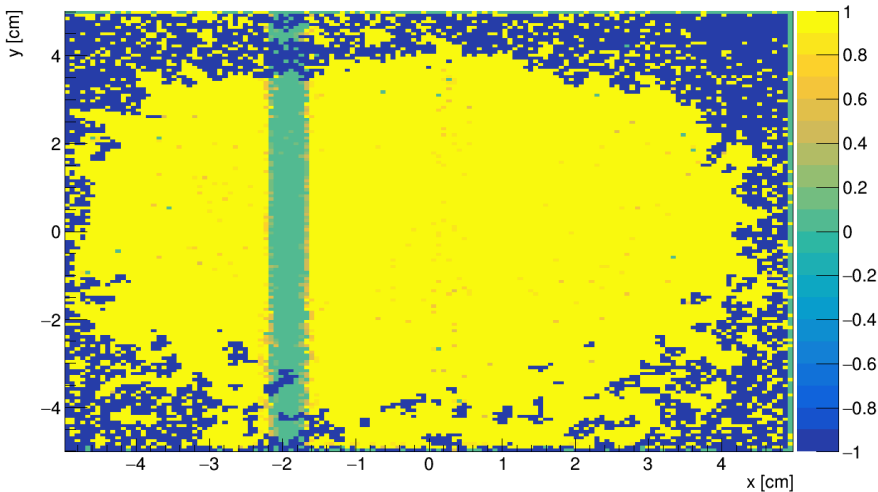
Example

Detector DW06X1__DW63 1 in year 2016_P07_MINUS : MeanEffic: 0.909461



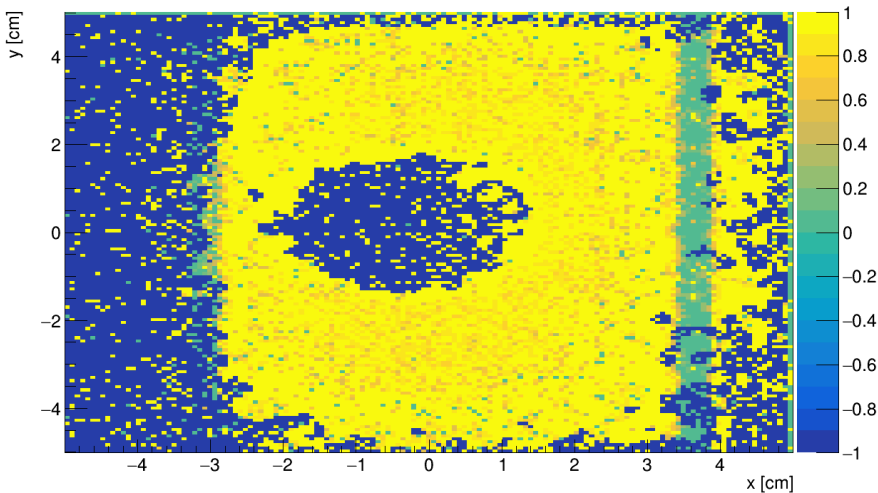
Examples

Detector FI06Y1__ VSE2 1 in year 2016_P07_MINUS : MeanEffic: 0.981158



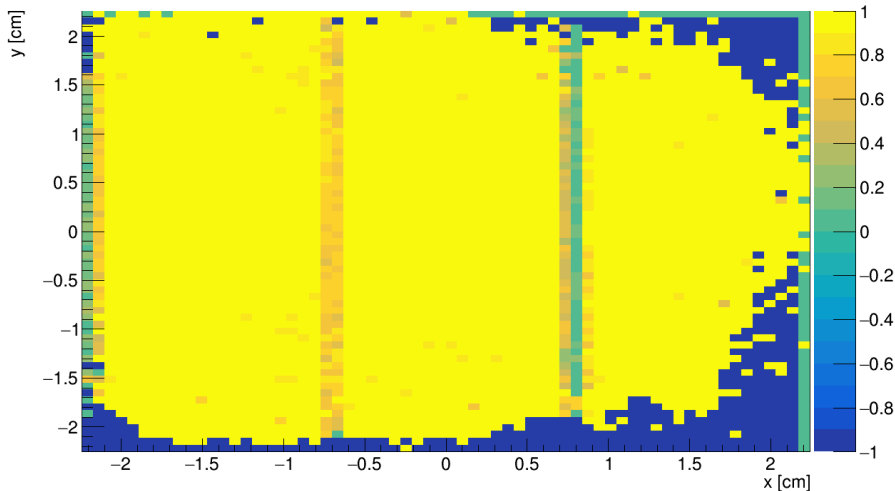
Example

Detector FI07X1__ VSF1 1 in year 2016_P07_MINUS : MeanEffic: 0.915265



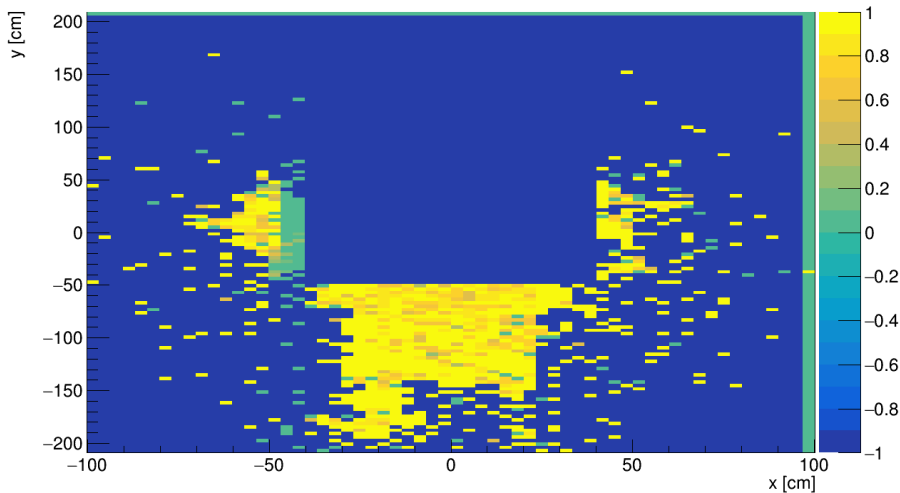
Example

Detector FI15X1__ VSH1 2 in year 2016_P07_MINUS : MeanEffic: 0.948920



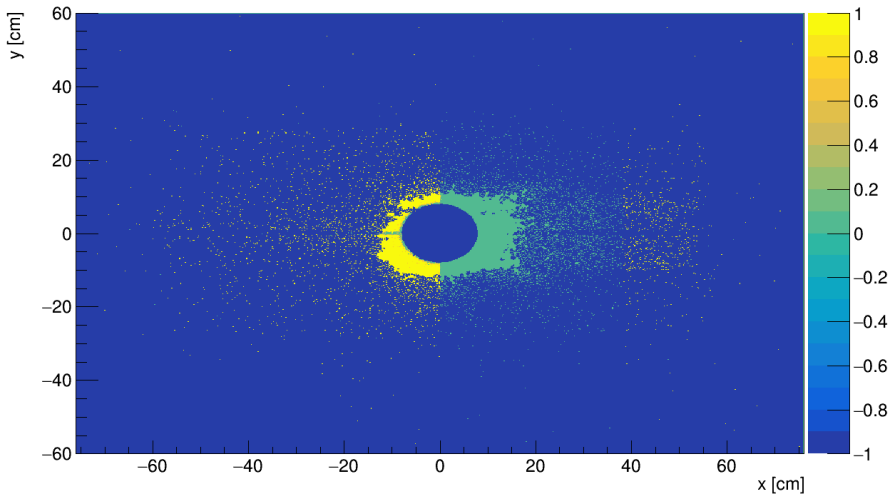
Example

Detector MB01Y1dr MBZ2 1 in year 2016_P07_MINUS : MeanEffic: 0.906766



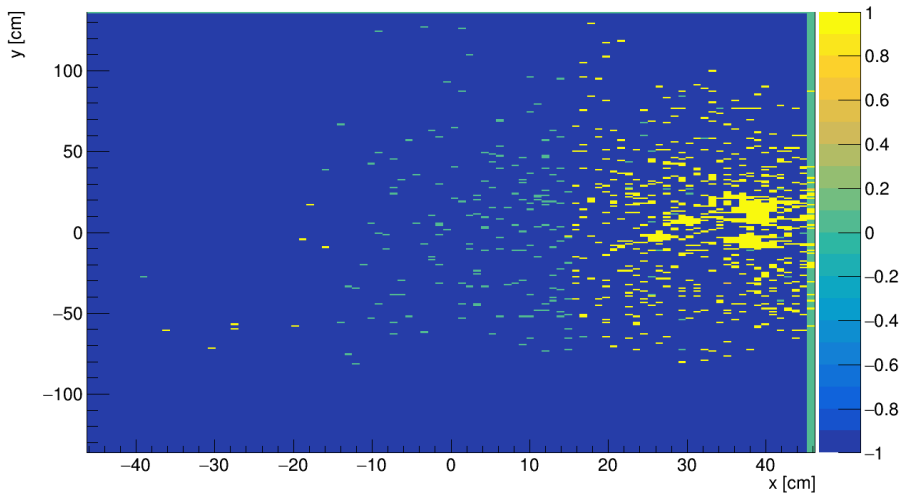
Example

Detector PA02X1__AA12 2 in year 2016_P07_MINUS : MeanEffic: 0.969108



Example

Detector ST03U1da STU6 2 in year 2016_P07_MINUS : MeanEffic: 0.998342



Example

Detector ST03U1ua STU5 2 in year 2016_P07_MINUS : MeanEffic: 0.995911

