



ISCC 91 June 2021 Coordinator's report

- Schedule/INTC
- Access to cern
- Around the hall
- Training
- Publications
- Separator course






Beam requests and schedule









- ~676 shifts requested
- Low energy Physics 21 June
- HIE ISOLDE: stable July 7; physics in W30
- Lack of ventilation in Class A labs, UC units were “predicted in 2020”
- Combine with some used targets from 2018
- Travel still very difficult for many countries (see access section later)
- Inevitable bias to local groups (or those able to run remotely)

Row Labels	Count of Experiment	Sum of Requested shifts
Actar	2	12
COLLAPS	2	40
Corset/XT03	1	12
CRIS	5	72
IDS	7	44
IDS	5	50,5
IDS fast timing	6	25,001
IDS Vandle	1	15
IDS/TISD	1	2
ISOLTRAP	3	36
ISS	7	117
LA1 Bordeaux	1	12
Magnetic moments	2	8
MIRACLS	1	7
SSP	20	53
TAS	3	19
Thorium clock	2	11
TISD/ISOLTRAP	4	60
VITO	4	17
VITO	1	0
Wisard	1	24
Edinburgh setup	1	21
Gandalph	1	6
TISD	1	6
GLM	2	6
Grand Total	84	675,501

- Published schedule till W35
- 145.5 scheduled shifts

ISOLDE Schedule 2021: weeks 25 - 35

GPS schedule 2021													
	June				July				August				
WK	23	24	25	26	27	28	29	30	31	32	33	34	35
MO	7	14	21	#730 Ti 28	5	12	19	26	#711 UC 2	9	16	23	30
TU	#638 UC Re		IS668/Coll s								#567 Sn-VD5	#709 UC	
WE						colls/TISD							
TH					IS668								
FR				LA1	#XXX UC						IS647		
SA									Stable + physics (if ready)		IS652	LA1	
SU				IS527			TISD			IS529	IS679	IS665	
			Surface	37K	RILIS: Mg	Surface			RILIS: Ca	RILIS: Ca	111Cd	RILIS: Au	RILIS: Au

HRS schedule 2021													
	June				July				August				
WK	23	24	25	26	27	28	29	30	31	32	33	34	35
MO	7	14	21	28	5	12	IS622 19	#717 UC 26	2	9	16	23	30
TU						#653 UC n							
WE		#715 UC											
TH					IS666 (sharing with GPS)		IS666 (nights)	IS680 30Mg @ >7.5MeV/u		#XXX LaC		(tbc) #715	
FR													
SA													
SU			IS660			IS622					IS661		IS660
			RILIS: Ag		26Na	RILIS: Cu	26Na	RILIS: Mg	RILIS: Mg		RILIS: In		RILIS: Ag



Start of protons for physics: 21 June
End of protons for physics 15 November

Target change	CERN holiday	Setting up/proton scan/yield	Physics HPS	Physics GRS	RILIS run
------------------	-----------------	------------------------------------	----------------	----------------	--------------



ISOLDE Week 24 2021		RILIS	GPS	HRS	CA0	MEDICIS	p's	Visits	other	
Monday	14/06/2021	AM	TISD	Tape station tests/timing etc.	GPS/HRS		NORMGPS	Suspended		
		PM	LISA	GLM/Tape station/MRTOF			NORMHRS (switching)			
		night								
Tuesday	15/06/2021	AM	TISD	Tape station tests/timing etc.	GPS/HRS		NORMGPS			
		PM	LISA	GLM/Tape station/MRTOF			NORMHRS (switching)			
		night								
Wednesday	16/06/2021	AM	TISD	#715 UC Ta	HRS					ISCC meeting
		PM	LISA	GLM/Tape station/MRTOF	GPS					
		night								
Thursday	17/06/2021	AM	Preparation for Ag	Stable setup	HRS					Suspended
		PM								
		night								
Friday	18/06/2021	AM		Stable setup	HRS					
		PM								
		night								
Saturday	19/06/2021	AM		Stable setup	HRS					
		PM								
		night								
Sunday	20/06/2021	AM		Stable setup	HRS					
		PM								
		night								
Monday	21/06/2021	AM	Ag	Preparation for CRIS Ag run	HRS		NORMGPS			
		PM		Stable beam to GLM Preparation for collections for IS668 and tests.						
		night								

Summary of week: Completion of tape station tests, complete HRS checkout with tape station/timing/beam gates. GPS continues with TISD for LISA in conjunction with ISOLTRAP and/or to GLM. From Wednesday stable beam preparation for IS660. RILIS switches to Ag. CRIS takes stable beam when ready. GPS ready for short collections from Monday 21st. (probably done evening/night)

GPS: #638 UC - Re. (Used target from 2018). TISD run for LISA project and collections in W25 for IS668/tests. Note: COLLAPS team would like to take stable beam e.g. Na at a suitable time. To be discussed when this could be possible.

HRS: #659 UC - VD7 (used target from 2018) continuation of tape station checkout till Wednesday. Target change for #715 (New). Setup for 40kV, ISCOOL in bunched mode. Ag mass marker.

Protons: Mixture of few NORMHRS and NORMGPS pulses for tape station tests and TISD throughout the week.

Operations responsible: Erwin (164585) until 15th June. Miguel (169616) till Tuesday 22nd June.

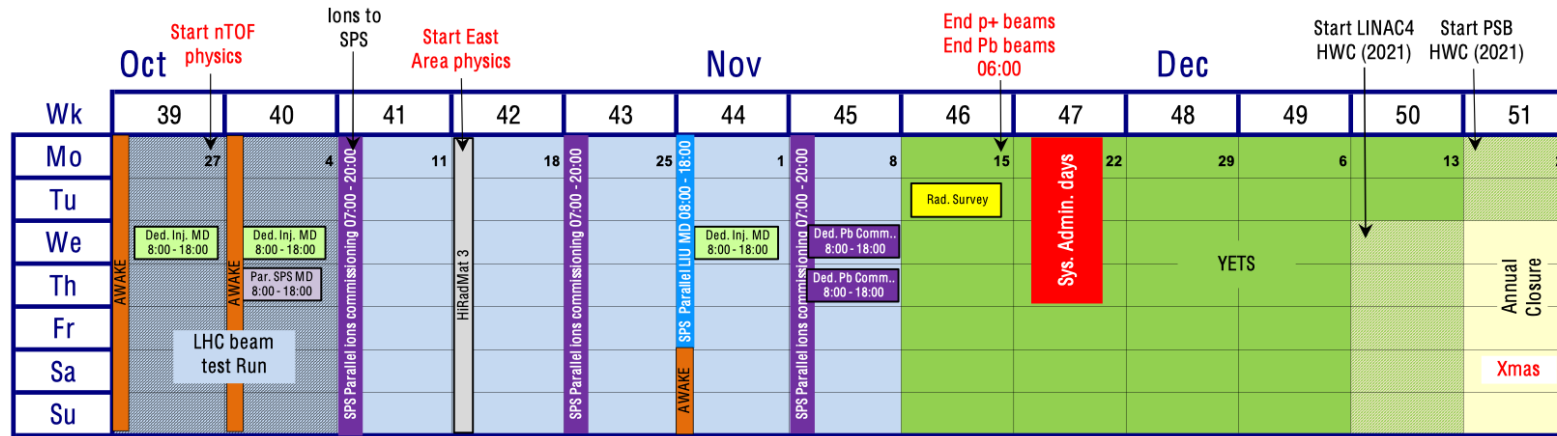
For more details about visits: <https://espace.cern.ch/isolde-visits-info/Lists/Calendar/calendar.aspx>
 ISOLDE Daily meeting: 09:15 Monday, 08:45 Tue-Fri via Zoom: <https://cern.zoom.us/j/98894210347?pwd=WU5SMlFkbkVlcWVkkYtNOG5nMFNFdz09>

Schedule from Sept – Nov being prepared: likely runs (still to be guaranteed)

- Low energy:
 - “Th Clock”
 - Laser spectroscopy
 - RaF
 - Te
 - MIRACLS?
 - Medical
 - γ -MRI (test of ISOLDE irradiation station?)
 - 149Tb
 - HIE ISOLDE
 - ISS
 - Rn
 - Zn
 - ACTAR (if safety approve)
 - ISS Be (online) run unlikely
 - IDS
 - Ac run (combined with TISD LIST run)
 - ISOLTRAP
 - Zn
 - WISARD
 - 32Ar run
 - And occasional collections/VITO

Difficult year for e.g. solid state and groups without local support
 Some groups prefer to be ready in Spring
 Winter physics for LE should be possible.
 Beginning of a Marathon with physics from March 2022

- The LHC beam test will be delayed by 3 weeks to weeks 42 and 43



- The Closure of the LHC tunnel and Cavern for commissioning will also be delayed by 3 weeks to **21 February**
 - The **YETS 2021-2022** will be extended by 3 weeks for all machines and facilities
- An update of the YETS and injectors schedules is in the making and will be presented at the IEFC of Friday and the FOM of next week

2022

Beam requests for 2022 (probably only low energy) to go out end of September
 Expect protons mid March
 HIE ISOLDE in the Summer *comme d'habitude*
 HIE ISOLDE demand expected to be very high in 2022!

	Count of Exp. no.	Sum of Shifts remaining for Run3
CRIS	5	99,5
IDS	10	107
IDS/ISOLTRAP	1	6
TISD	4	20
TISD/IDS	1	9
HIE	26	452
Gandalph/CRIS	1	6
Windmill/IDS	1	22,5
Travelling Setup	2	24
COLLAPS	2	35
ISOLTRAP	4	42
Collections: 163Ho	1	6
biophysics	1	9,5
SSP	9	116
Gandalph	1	8
Travelling Setup; ECSLI	1	11
IDS/VANDLE	1	18
in-source / IDS	1	10
VITO	1	29
TAS	3	39
MIRACLS	1	17
Collections: 108Ag	1	30
PAC nuclear moments	1	12
WISARD	1	24
Medical physics	2	16
Grand Total	82	1168,5

Shift backlog before next week's INTC

	Count of Exp. no.	Sum of Shifts remaining for Run3
INTC 63	34	485
INTC 64	18	285,5
INTC 65	14	245
INTC 66	16	153
Grand Total	82	1168,5

Next week's INTC

Open session 23 June

Closed session 24 June

Agenda here: <https://indico.cern.ch/event/1041907/>

Again, submissions from non-collaboration countries and without contact to collaborations

Documents submitted for INTC 67

Summary of documents discussed at INTC 67	Sum of Shifts requested	Count of Facility
Letter of intent	41	6
COLLAPS	8	1
HIE ISOLDE	30	2
TISD	3	1
(blank)	0	2
Letter of clarification	59	3
HIE ISOLDE	59	3
Proposal	240	15
COLLAPS	17	1
CRIS	16	1
HIE ISOLDE	191	10
Nuclear masses	8	1
Quadrupole moments	8	1
Grand Total	340	24

Access to CERN/ running experiments

Users can come on site, but not as smooth a process as people are used to...

Approval needed to come on-site

Approval needed for hostel bookings

New users:

- team leaders need to launch PRT once visit approved
- Send this to Jenny who informs users office
- Users office processing docs 2-3 days before arrival
- Need for precise dates difficult to guarantee.
- Not very efficient...forest of emails flying around

UK users have extra hoops to jump through

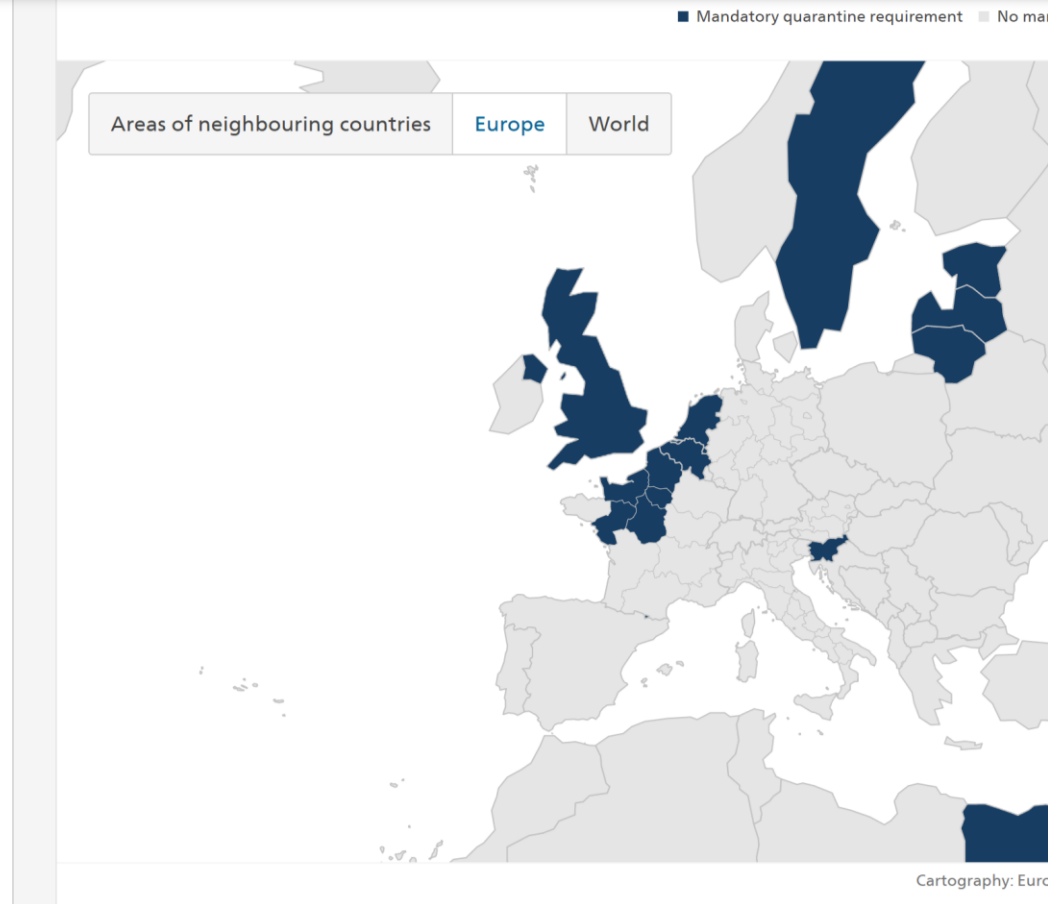
- Convention d'accueil required (needs processing time, can be several weeks)
- If coming by plane to Switzerland, a laissez passer is needed, obtained from the Swiss consulate. Fast processing time, but without this arrival will be complicated



Proximeter required for all stays >3 days.

Can be picked up in advance from B 55 similar to doseimeters

International situation, **World** ▾



If a country is on the French *or* Swiss list of “at risk” countries, quarantine is required

Exemptions can be requested but not guaranteed. E.g. UK exemptions were relatively straightforward to obtain mid May.

Recent feedback that this is currently difficult to secure. But for necessary interventions can be requested.

CERN'S COVID-19 SCALE AND MEASURES



The COVID-19 level in place reflects the prevailing epidemiological situation, and determines corresponding measures across the Laboratory.

TRANSITION BETWEEN LEVELS

Determined via a combination of the incidence rate in the local area and a qualitative assessment by CERN.



Weekly virus circulation in local area
Qualitative assessment
Based on number of confirmed cases at CERN, presence of new variants, vaccination, stratified testing campaign, etc.

Measure	Level 4 (High)	Level 3 (Medium)	Level 2 (Low)	Level 1 (Negligible)
Telework (TW) measures*	Members of personnel (MP) who can telework should telework, though one day per week on-site is possible.	MP who can telework should telework, though two days per week on-site are possible.	Normal working conditions apply. Telework may be exceptionally requested by the Organization.	Normal working conditions apply.
Access to CERN sites**	MP and honorary members are authorised, only for professional reasons and in consultation with their supervisors Retirees can access on-site facilities, such as bank safe deposit boxes, the CHIS office or the pension fund, only if strictly necessary Relatives of CERN Members of Personnel are not authorised CERN club members are not authorised	MP and honorary members are authorised, in consultation with their supervisors Retirees can access on-site facilities Relatives of CERN MP are authorised CERN Club members are authorised, respecting rules for club activities	Standard Access	Standard Access
CERN clubs	Club activities outside CERN: Host State regulations apply			
	No club activities are allowed on site	Only activities supervised by the clubs are allowed.	Standard rules	
Microcosm exhibition, CERN shop, Globe events	Resume with measures similar to those valid in Geneva museums, shops and theatres, and following HSE-approved protocols		Distributors of hand sanitizing gel available at entrance	
Public on-site events within the fenced area	Not allowed		Allowed with measures similar to those in Geneva public events and within CERN access measures	Distributors of hand sanitizing gel available at the venue

* Measures do not apply to those members of the personnel who cannot telework or whose presence on-site is needed for carrying out the ongoing activities of the Organization.
** With the ramping up of Host-State vaccination campaigns, access conditions have been revised and now apply across all age groups.

Vulnerability to COVID-19

It is the responsibility of each person to declare a vulnerability. For people with a declared vulnerability, specific protection plans must be defined, independently of the COVID-19 level in place.

Please note

Measures such as washing hands, wearing masks, keeping distance, self-isolation and quarantine, duty-travel and space-occupancy restrictions remain in place at least until virus circulation is assessed as low.



CERN currently in level orange

Measure	Level 4 (High)	Level 3 (Medium)	Level 2 (Low)	Level 1 (Negligible)
Telework (TW) measures*	Members of personnel (MP) who can telework should telework, though one day per week on-site is possible.	MP who can telework should telework, though two days per week on-site are possible.	Normal working conditions apply. Telework may be exceptionally requested by the Organization.	Normal working conditions apply.
Access to CERN sites**	MP and honorary members are authorised, only for professional reasons and in consultation with their supervisors Retirees can access on-site facilities, such as bank safe deposit boxes, the CHIS office or the pension fund, only if strictly necessary Relatives of CERN Members of Personnel are not authorised CERN club members are not authorised	MP and honorary members are authorised, in consultation with their supervisors Retirees can access on-site facilities Relatives of CERN MP are authorised CERN Club members are authorised, respecting rules for club activities	Standard Access	Standard Access
CERN clubs	Club activities outside CERN: Host State regulations apply			
	No club activities are allowed on site	Only activities supervised by the clubs are allowed.	Standard rules	
Microcosm exhibition, CERN shop, Globe events	Resume with measures similar to those valid in Geneva museums, shops and theatres, and following HSE-approved protocols		Distributors of hand sanitizing gel available at entrance	
Public on-site events within the fenced area	Not allowed		Allowed with measures similar to those in Geneva public events and within CERN access measures	Distributors of hand sanitizing gel available at the venue

* Measures do not apply to those members of the personnel who cannot telework or whose presence on-site is needed for carrying out the ongoing activities of the Organization.
** With the ramping up of Host-State vaccination campaigns, access conditions have been revised and now apply across all age groups.

Vulnerability to COVID-19

It is the responsibility of each person to declare a vulnerability.

For people with a declared vulnerability, specific protection plans must be defined, independently of the COVID-19 level in place.



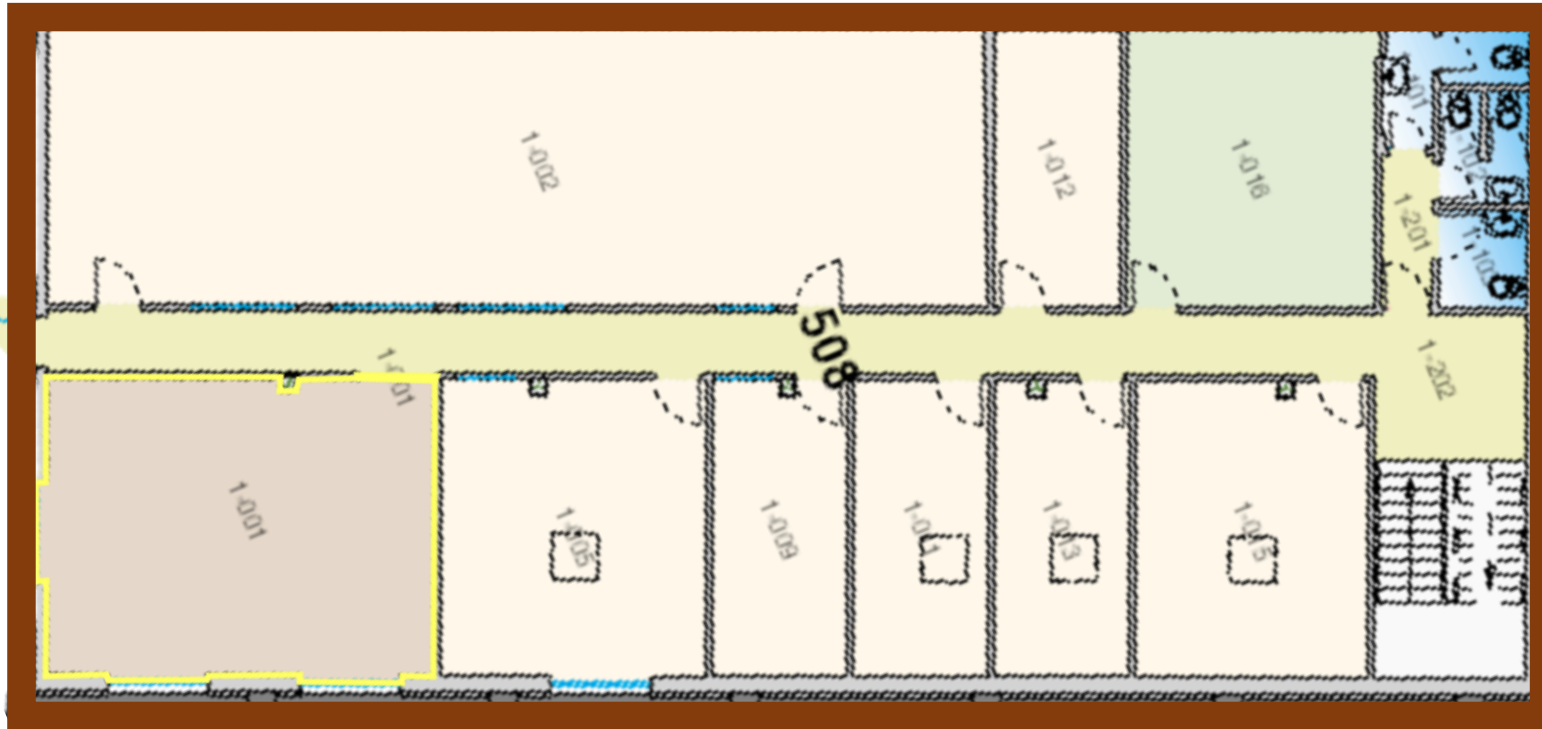
Please note

Measures such as washing hands, wearing masks, keeping distance, self-isolation and quarantine, duty-travel and space-occupancy restrictions remain in place at least until virus circulation is assessed as low.

Restrictions on number of people remain

- 1-002 → Control room (291 m³)
- 170 m³/h
- 6 people

- 1-016 → Kitchen (77 m³)
- Vent?
- 4 people



- 1-001 → Visitors room (130 m³)
- 310 m³/h
- 6 people

- 1-015 → RILIS DAQ (76 m³)
- 196 m³/h
- 4 people

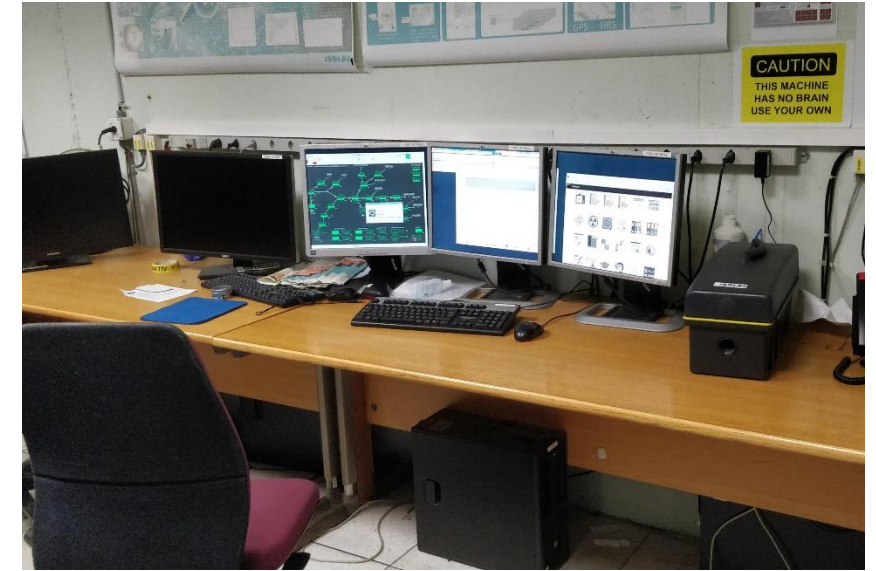
- 1-005 → ISOLDE DAQ (87 m³)
- 232 m³/h
- 4 people

- 1-009 → ISOLTRAP DAQ (44 m³)
- 176 m³/h
- 2 people

- 1-011 → xx (44 m³)
- Vent?
- 4 people

- 1-013 → xx (42 m³)
- Vent?
- 2 people

Use old control room, DAQ and visitors space more optimally to allow for more distancing/zoom conferencing



With OP, additional control terminals...OP working on means to allow monitoring e.g. for advanced users at home/office



ISS closed up and ready for stable beam from July 7



Vito beamline almost ready
Since March new SC magnet is in place



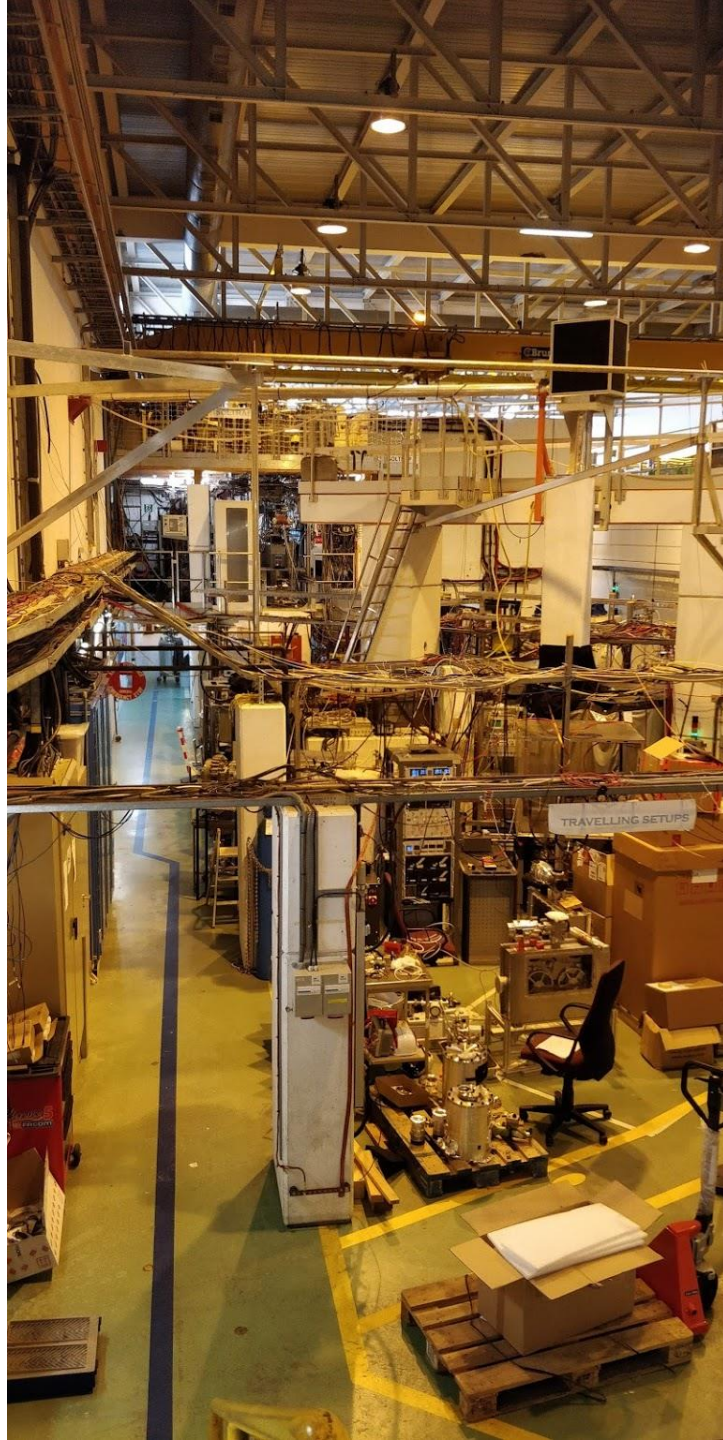
- A lot of work has taken place at ISOLTRAP, including the new HV cage which now been approved by safety.
- First successful run with the MR-TOF last week for LISA tests.

Removal of NICOLE: finally some progress





Many thanks for Simon Mataguez for a lot of help



MIRACLS:

Work ongoing at LA2 for the reduced setup.
HV cage in 508 will be moved to the old NICOLE area
Assembly of Paul trap starting soon

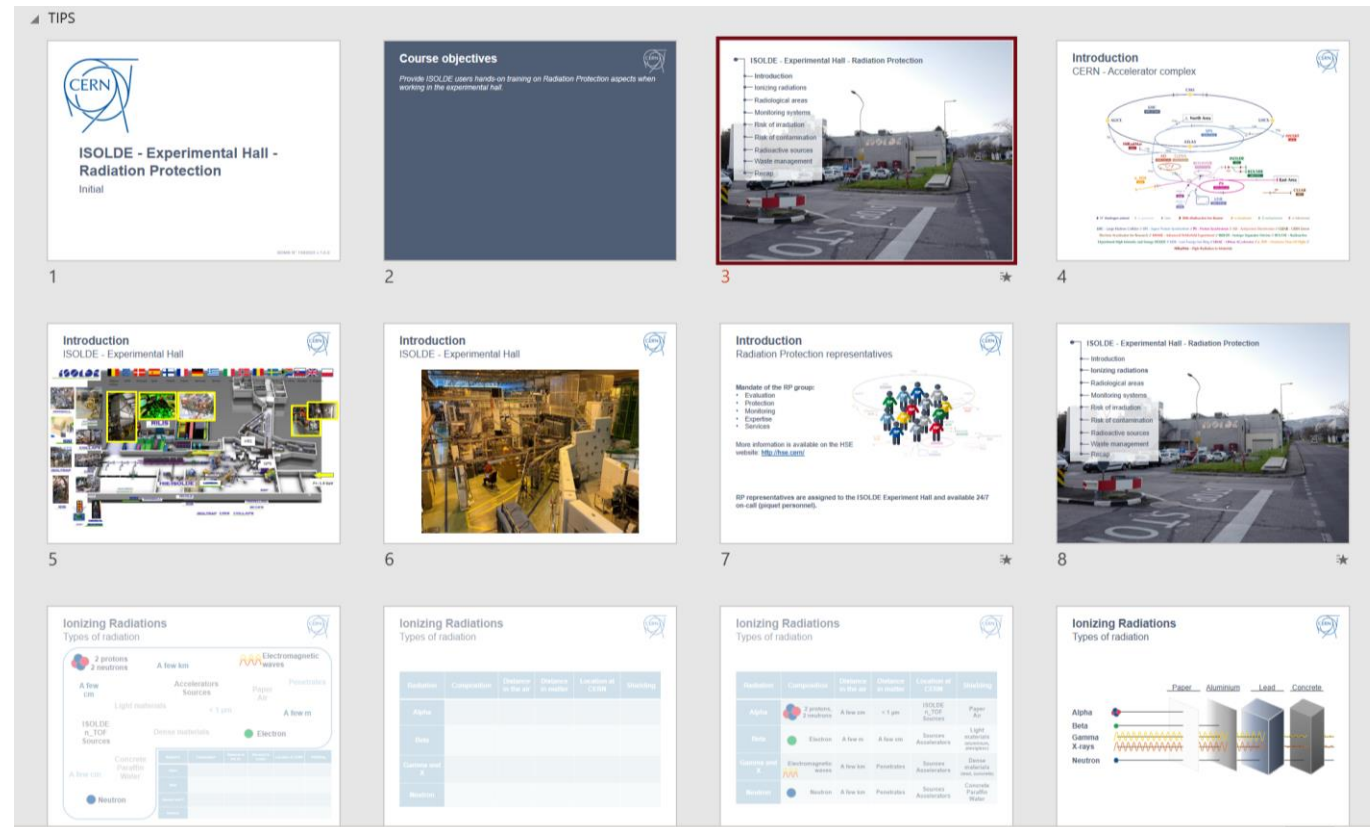
Training

In addition to the (ever-growing) number of online courses...

Hands-on RP and Electrical training

New from next week:

- dedicated weekly sessions of RP hands-on course. Local trainer (!) so scheduling should be easier for this course.
- New EP-wide electrical course for all users/staff who need to work in an experimental area.
- Both will take place on Tuesday but time has increased:
 - EP course 0830 till 1230
 - RP course 1400 till 1630



In LMS:

ISOLDE - Experimental Hall - Radiation Protection - Handling (Covid-19)

Electrical Safety - Working in EP experiments



MEMORANDUM

Date : 2 June 2021

To : Department Heads, Technical Coordinators of Large Experiments

Cc : HSE-TMB, DSOs / LEXGLIMOSes + deputies

From : Safety Training section (HSE-TS-ST)

Via : Angela GOEHRING-CRINON (HSE-TS, Group Leader)

Subject : Safety Training programme "Electrical Safety - Working in EP experiments"

CERN Safety Training, in collaboration with CERN experts in electrical safety and representatives from the EP Department, has designed a new training course for physicists, engineers and technicians who will carry out a limited number of electrical tasks in CERN experimental areas, workshops and laboratories.

The aim of the course, titled "**Electrical Safety - Working in EP experiments**", is to raise awareness of the persons concerned regarding the specific risks that are present in the above-mentioned installations and the associated mitigation measures and procedures.

The course only covers electrical and mechanical tasks listed below. Any task exceeding the scope of those mentioned below require specific electrical training and authorisations according to Safety Code C1¹.

Electrical tasks

- Connection, disconnection and operation of equipment at plug sockets up to 63A.
- Install and operate standardised rack mounted electrical equipment in relation to experimental apparatus at CERN within existing racks and the connection of modules and modular power supplies with standardised connectors.
- Performance of localised lock-out/tag-out for your own work and for equipment under your responsibility, where the point of isolation is a plug and socket outlet.
- Cable installation and termination in an electrical environment, up to 6 mm² for signal cabling and power distribution, and up to 16 mm² for earthing.
- Repair and removal operations on experimental apparatus, when the equipment is disconnected and unplugged. If the operation requires the removal of any housing or protective screens these must be replaced before the equipment is re-powered.
- Measurements on live equipment, which may only be taken in the course of normal operation as part of a written and verified operational procedure and risk assessment.

¹ [Link](#)



MEMORANDUM

Annex 1

Authorisation to carry out specific activities in CERN experimental areas

This authorisation is prerequisite for Associated Members of the Personnel (MPAs¹) with status USER to carry out certain electrical and mechanical tasks in experimental areas at CERN. It must be signed by the authorized representative of the home institution².

I, the undersigned, herewith certify that the MPA identified hereafter

Cern ID of MPA (if already attributed): _____

Name (as in passport): _____

First name(s): _____

Date of birth (dd/mm/yyyy): _____

Name of home institution: _____

Country: _____

is employed by us and that, subject to the successful completion of the CERN Safety Training course "Electrical Safety - Working at EP Experiments"³ by said MPA, he/she is authorised to carry out the following electrical and/or mechanical tasks at CERN.⁴

Electrical tasks

- Connection, disconnection and operation of equipment at plug sockets up to 63 A.
- Install and operate standardised rack mounted electrical equipment in relation to experimental apparatus at CERN within existing racks and the connection of modules and modular power supplies with standardised connectors.
- Performance of localised lock-out/tag-out for your own work and for equipment under your responsibility, where the point of isolation is a plug and socket outlet.
- Cable installation and termination in an electrical environment, up to 6 mm² for signal cabling and power distribution, and up to 16 mm² for earthing.
- Repair and removal operations on experimental apparatus, when the equipment is disconnected and unplugged. If the operation requires the removal of any housing or protective screens these must be replaced before the equipment is re-powered.

¹ The Associated Members of the Personnel are defined in CERNs Staff Rules and Regulations and the corresponding Administrative Circulars and include users, cooperation associates and visiting scientists.

² Normally the team leader should sign the form as authorized representative.

³ [Link](#) to Safety Training catalogue, Electrical Safety domain.

⁴ Please indicate the tasks concerned.

Publications / Open access

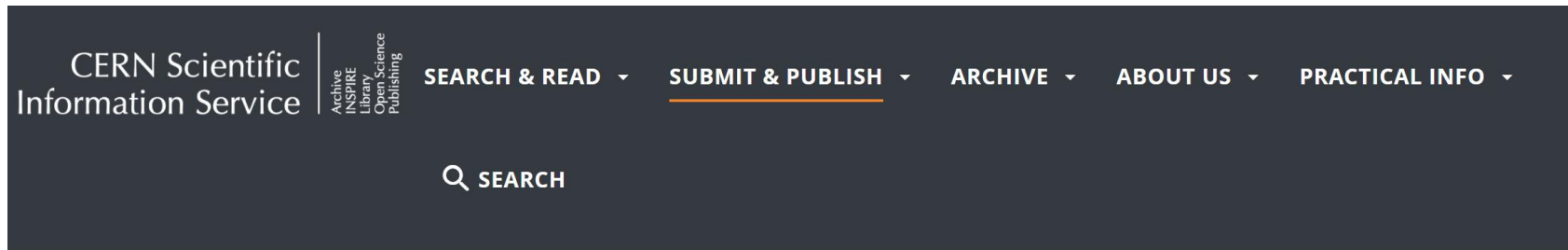
Many new agreements have been signed giving open access rights for papers with a CERN author (even if not affiliated)

Important to include ISOLDE collaboration during the submission of a paper

<https://scientific-info.cern/submit-and-publish/publish-open-access>

If in doubt:

open-access-questions@cern.ch



Publish open access

The CERN Scientific Information Service has established several agreements with scholarly publishers to allow easy and cost-efficient open access publishing for [CERN Authors](#). If you know already the journal to which you want to submit your article, please use the CERN Author Guide to find out if your open access article will be automatically financed by the CERN OA Fund. Otherwise, you can access an overview of journals by discipline or publisher below and read through the detailed arrangements we have established to achieve our goal of publishing all CERN results freely accessible and reusable by everyone.

Click here

List of Open Access arrangements

To find the most suitable Open Access journal, please

- [Accelerators](#)
- [Instrumentation](#)

Dear Karl,

on 1 July 2021 our new arrangement with APS will “kick in”, so from this date it is important that all ISOLDE articles reflect that they originate from the ISOLDE Collaboration.

In practical terms, papers with a corresponding authors affiliated with CERN, shall be published open access.

For ISOLDE experiment papers that do not have a corresponding authors affiliated with CERN, **the corresponding author must pay some additional attention when submitting manuscripts indicating “ISOLDE Collaboration” (possibly followed by the experiment number) in the APS submission form. APS shall then in principle pick up the paper for open access.**

I hope this new arrangement will not cause us too much trouble. However, I am sure that we must keep an additional eye on this in the first weeks.

Regards Jens

Bring back the “and the ISOLDE collaboration” for papers?

Separator courses not currently possible and via Zoom not very worthwhile



Miguel has prepared a suite of videos which will be available for users to become acquainted with the machine