

# Status of 2D efficiencies. DVCS 2016 P07 $\mu^-$

Anatolii Koval, NCBJ, Warsaw

June 18, 2021

# 2D efficiencies. DVCS 2016 P07 slot 6 $\mu^-$ cuts

## Bad spill cut

- **List source.** `ssh://git@gitlab.cern.ch:7999/compass/dvcs_sidis/data_quality/bad_spill.git/bad_spill.lst/bad_spill.P07slot4.lst`
- **Generation.**  
`listBadSpills bad_spill.P07slot3.lst LAST Middle Ladder Outer Flux > bad-spills.txt`

## Flux cut

- **Flux files.** `ssh://git@gitlab.cern.ch:7999/compass/dvcs_sidis/flux/flux_files.git/flux_Johannes/2016/flux.values`

## Bad channel cuts

- **Unstable Channels list.** `Frontera:/scratch3/06955/akoval/coral.p07.scalade/template-P07/slot6/UnstableChannelsList.2016P07.txt`

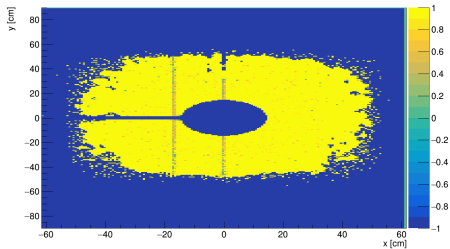
# CORAL setup with ESCALADE

- CORAL phase for a large amount of TBNames is done
- Going through PHAST phase producing mDSTs

# DC00Y1 comparison

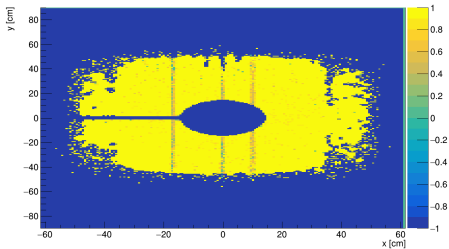
## P07

Detector DC00Y1\_\_SDB1 1 in year 2016\_P07\_MINUS : MeanEffic: 0.981299



## P09

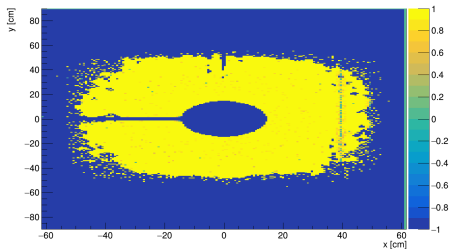
Detector DC00Y1\_\_SDB1 1 in year 2016\_P09\_MINUS : MeanEffic: 0.975560



# DC00Y2 comparison

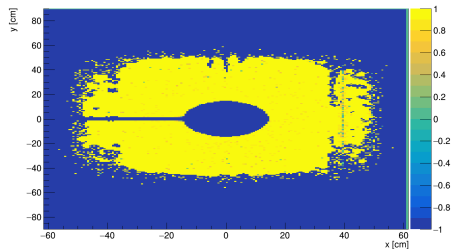
## P07

Detector DC00Y2\_\_SDB2 1 in year 2016\_P07\_MINUS : MeanEffic: 0.988830



## P09

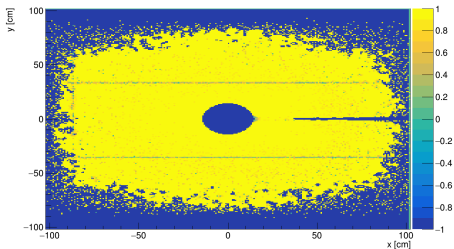
Detector DC00Y2\_\_SDB2 1 in year 2016\_P09\_MINUS : MeanEffic: 0.988730



# DC04X1 comparison

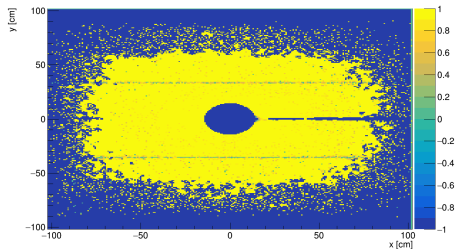
## P07

Detector DC04X1\_\_SDC6 1 in year 2016\_P07\_MINUS : MeanEffic: 0.973491



## P09

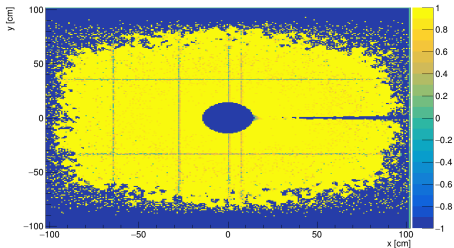
Detector DC04X1\_\_SDC6 1 in year 2016\_P09\_MINUS : MeanEffic: 0.979400



# DC04X1 comparison

## P07

Detector DC04X2\_\_SDC5 1 in year 2016\_P07\_MINUS : MeanEffici: 0.964458



## P09

Detector DC04X2\_\_SDC5 1 in year 2016\_P09\_MINUS : MeanEffici: 0.972555

