

Unstable Cluster Time

David Spülbeck

HISKP Bonn

16. Juni 2021

`spuelbeck@hiskp.uni-bonn.de`

Who am I?

- David Spülbeck, Started PhD last month, Bonn
- Analysis of $f_1(1285)\pi^-$
- Studying the slot4 data 2008 and 2009 (hadron run)
- Necessary: Event selection for $\pi^- \pi^+ \pi^- \gamma \gamma$

Cluster time has off set

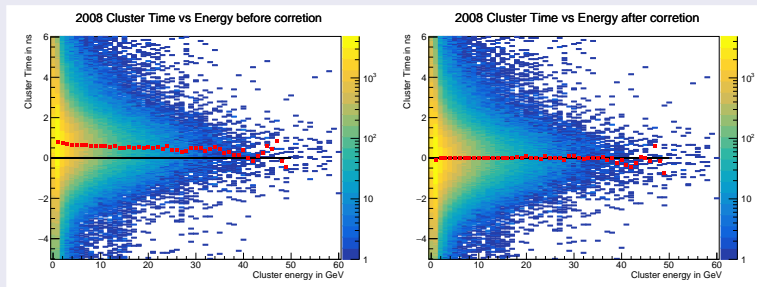
- For photon identification a time cut is applied
- Cluster times are not at 0 ns
- We perform an energy depended correction (similar to S. Uhl (2016))

Unstable Cluster Time

Who am I?

- David Spülbeck, Started PhD last month, Bonn
- Analysis of $f_1(1285)\pi^-$
- Studying the slot4 data 2008 and 2009 (hadron run)
- Necessary: Event selection for $\pi^- \pi^+ \pi^- \gamma \gamma$

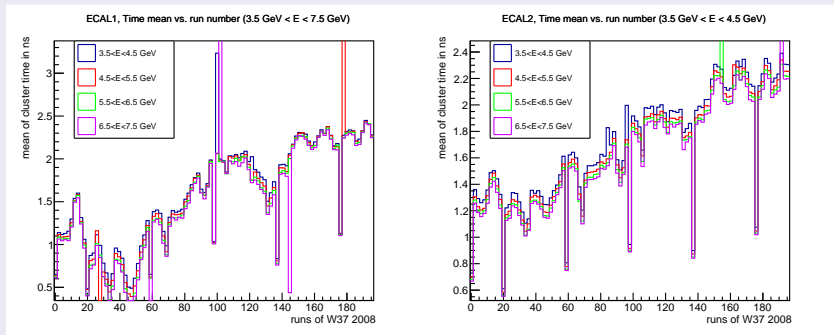
Correction of cluster time off set - run 70450, 2008, ECAL1



Unstable Cluster Time

Cluster time vs. run number (2008 - W37)

- Cluster time off set is shifted from run to run



- Why is that?
- Can there anything be done for slot5 production?