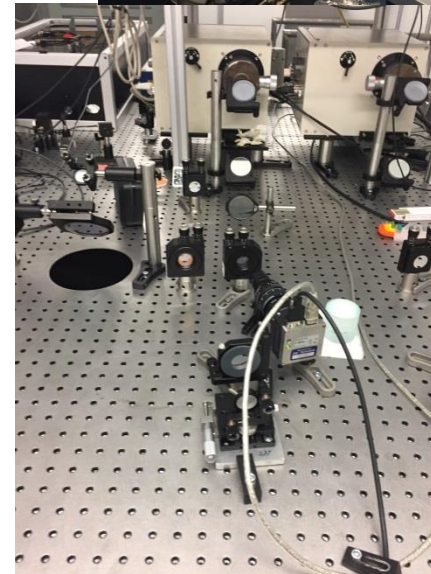
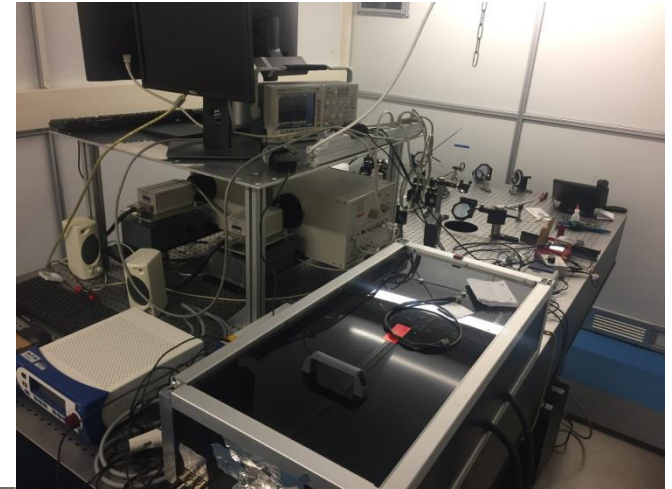
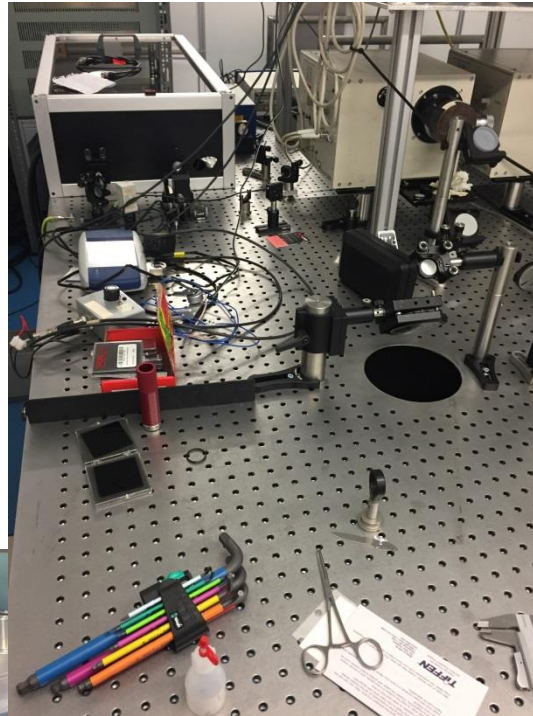
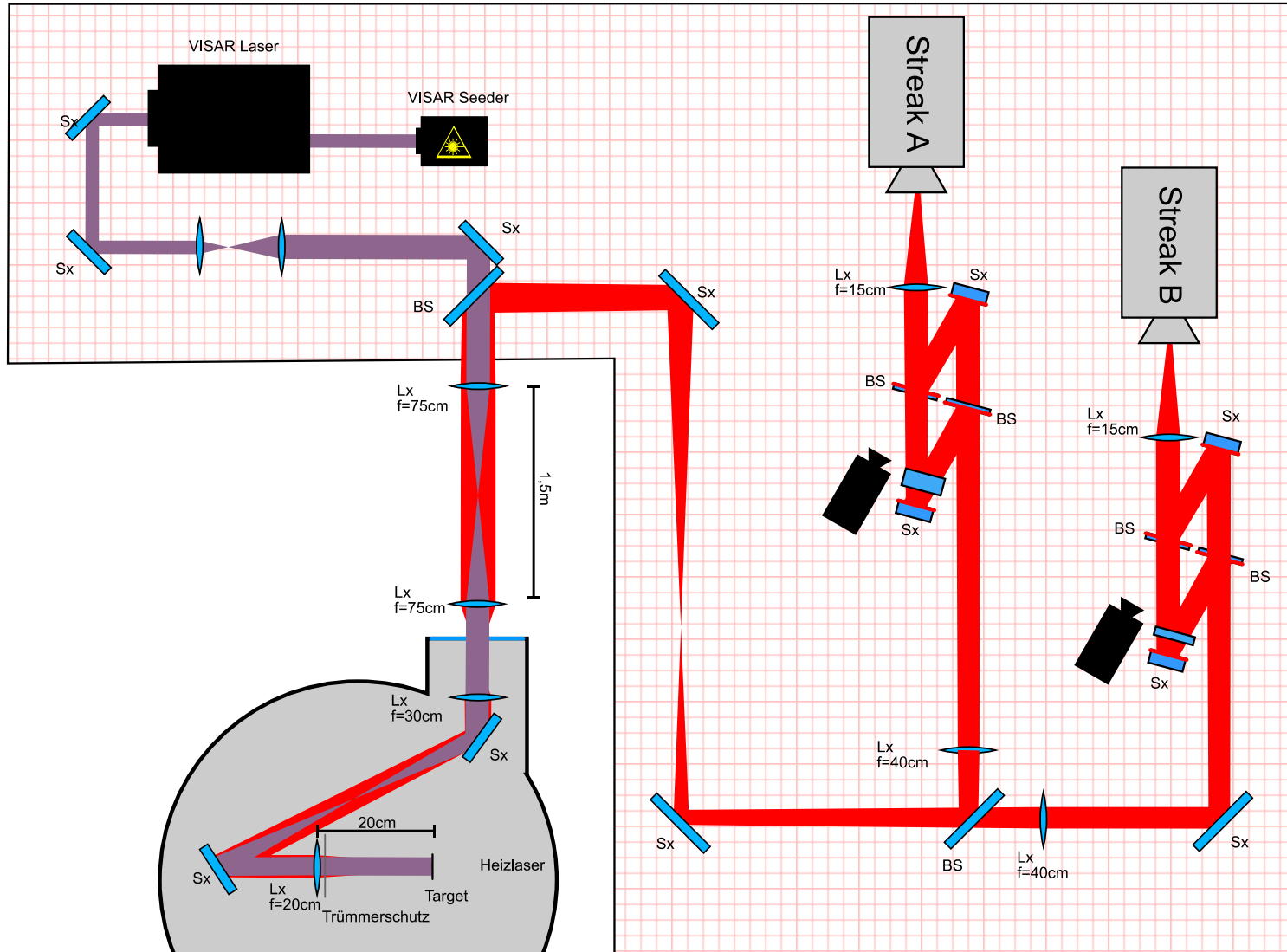


VISAR Z6

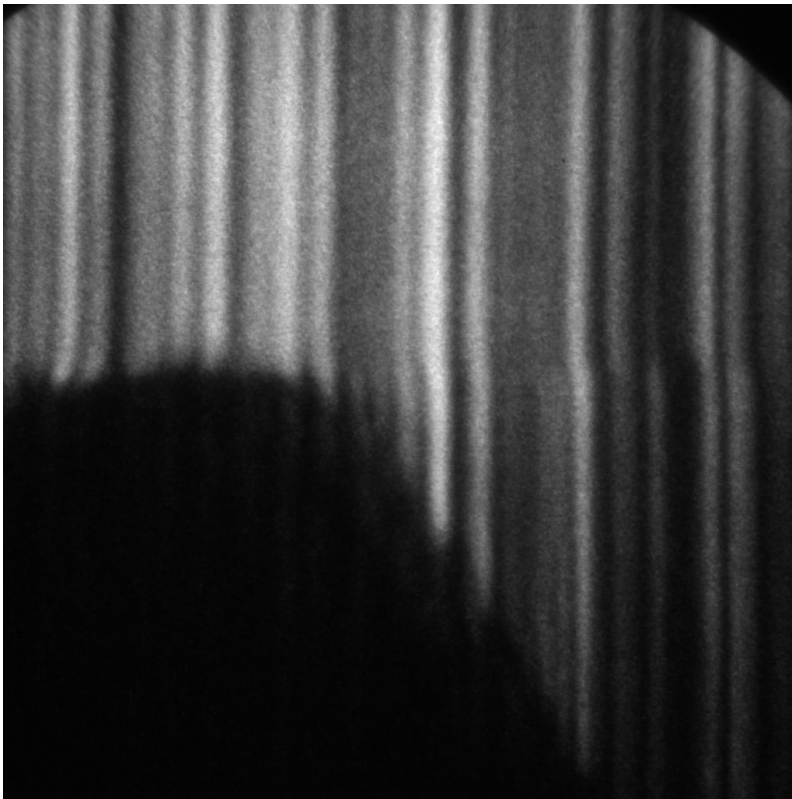
Aufbau



optischer Aufbau



- zwei Etalon vorhanden (12,5 mm und 50 mm)



- zwei Etalon vorhanden (12,5 mm und 50 mm) FS?

$$\lambda = 660 \text{ nm}$$

$$n = 1.4563$$

$$\tau = \frac{2d}{c} \left(n - \frac{1}{n} \right).$$

$$VPF = \nu \approx c \frac{1}{2\tau f_0 + 1} \approx \frac{\lambda_0}{2\tau}.$$

```
>> 660e-9/2/ (2*50e-3/3e8* (1.4563-1/1.4563))
```

```
ans =
```

```
1.2863e+03
```

```
>> 660e-9/2/ (2*12.50e-3/3e8* (1.4563-1/1.4563))
```

```
ans =
```

```
5.1453e+03
```

- optimierte größere (3-4“) Linsen
- Neue single mode Stabilisierung rein Hardware ~500 € (DS).
- 2“ 660 nm Passfilter ~1k €.
- optimierte Beamsplitter für beide Interferometer ~4k €.
- Temperaturstabilisierung des Raum ist schlecht.