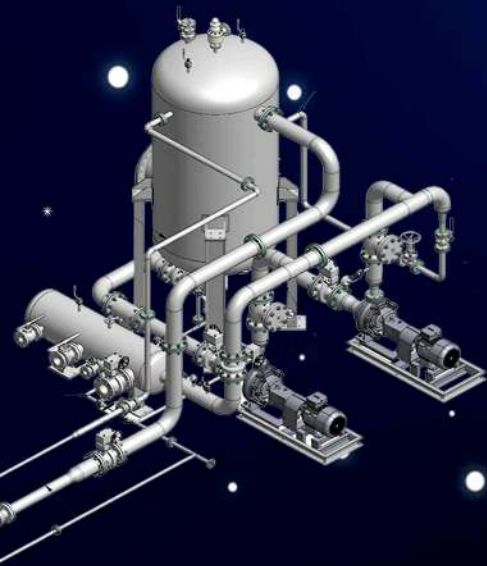
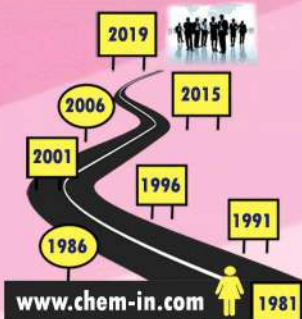




INTEGRATED MULTI-DISCIPLINARY PRODUCTS AND SERVICES





CHEMIN'S Journey in Control & Instrumentation

- ❖ Established in the year 1981 by Mr. P.Rangaraj, our Founder cum Chairman qualified Instrumentation Professional from MIT
- ❖ More than 3 Decades of experience in various Power Plants, Chemical & Petro-Chemical Plants in Government and Private Sectors.
- ❖ Having 54000 Sq.ft. factory cum office with all modern facilities for Design, Engineering & Manufacturing in the Union Territory of Puducherry with qualified & experienced Human Resources.
- ❖ Certified for ISO 9001:2015, EMS 14001:2015 & ISO 45001:2018 by BVCI.
- ❖ NATIONAL AWARD WINNER from Ministry of Micro, Small & Medium Enterprises (MSME) for Outstanding Entrepreneurship during the year 2010
- ❖ Human Resource of more than 750 C & I Professionals recruited directly and indirectly working at various Project sites spread over India & abroad.
- ❖ Experienced in 'Consultancy', 'Marketing', 'Design, Manufacture, Erection, Testing & Commissioning' & 'Maintenance' of Electrical, Process Control, Instrumentation Systems with PLC Integration.
- ❖ Specialized in Pre-Engineered, Pre-Fabricated Site Offices, Field Hostels, Calibration labs, Rooftop Houses, Kiosks, Toilet blocks and Security Cabins.
- ❖ Manufacturers of Control Panels and Specialized / Custom built / Tailor made Instrumentation, Electrical Power Panels & PLC Panels.
- ❖ Enclosures are Type Tested For IP54, IP55 & IP65 and Electrical Panels for 50 KA Short Circuit and Temperature rise Test.
- ❖ Successfully Executed more than 150 projects in the field of Control & Instrumentation, Electrification and Automation.
- ❖ "TEACH, TRAIN & MAKE THEM EXECUTE" is the motto of our CHEMIN Institute of Instrumentation Management (**CHEMIN IIM**).



"Instrumentation, Electrification, Automation & Pre-Fab Infra"

E-House / Environmental Shelters / Instrumentation Analyser Shelters



Elevation view of E-House / Analyser Shelters



Inner View of E-House showing Analyser panel, Power and Utility panel



**Instrumentation Analyser Panel Enclosures
(MAIN I/O PANEL AND ELECTRICAL PANEL)**



Gauge board and internal tubing

Waste Nitrogen Tubing



LEL Detector



SS Tubing for Vacuum Pump



Oxygen Analyser



Nitrogen Metering Panel



CHEMIN CONTROLS AND INSTRUMENTATION PVT. LTD.,

C-102 to 106, 110 to 114, 17th Cross, PIPDIC Industrial Estate,
Mettupalayam, Puducherry - 605 009. INDIA

Ph : +91-413-2271155, 2277685, 2277975 Fax : +91-413-2277684

Email ID : info@chem-in.com | Website : www.chem-in.com



CHEMIN AUTOMATION WITH A TEAM OF WELL EXPERIENCED AND HIGHLY SKILLED GROUP OF PROFESSIONALS, PROVIDE TOTAL PROCESS AUTOMATION SOLUTIONS BASED ON CUSTOMER SPECIFIC REQUIREMENTS ENSURING PRODUCTIVITY, QUALITY, SAFETY, SUSTAINABILITY OF PROCESS PLANT.

INDUSTRIAL AUTOMATION & CONTROL SOLUTIONS

PRODUCTS

Integrated Control Systems and Automation Components

Field Instruments

SERVICES

Plant Automation

E & I Calibration Lab Setup

Control Room Solutions

CHEMIN Automation – Smart, Safe, Secure and Sustainable Solution to your Process Requirement

Plant Automation

CHEMIN C&I provides full control room Instrumentation Solutions with PLC & SCADA catering to various Industrial sectors such as Oil & Gas, Chemical, Refineries, Energy, Automotive & Pharmaceuticals.



“Instrumentation, Electrification, Automation & Pre-Fab Infra”

**DESIGN, ENGINEERING, FABRICATION, PANEL & CABINET INTERNAL WIRING,
TESTING, TRAINING AND DELIVERY OF INSTRUMENT CONTROL PANEL**

PRODUCT DESCRIPTION:

Instrument control panel with Video Graphic recorder with Modules, PLC system, HMI and Alarm Annunciator

SALIENT FEATURE:

- Safety Data logging System
- Industrial Workstation
- PLC System – Make: Schneider
- Process Temperature Monitoring and Control System
- Atomic Energy application
- Long Endurance
- Very High

APPLICATION:

Instrument control panel to Display, Monitor and Logging of different parameters from different systems/areas of radio active facility



TOTAL PLANT AUTOMATION

Design, Manufacturing, Supply, Supervision
of Erection and Commissioning of PLC



PLC Panel Supplied to
M/s. West Kenya Sugar Co. Ltd, Kenya.



PLC System Supplied to
M/s. PMA Controls India Ltd.



Instrument Panel with PLC Supplied to
M/s. LNT Howden for Malwa Project



CHEMIN CONTROLS AND INSTRUMENTATION PVT. LTD.,

C-102 to 106, 110 to 114, 17th Cross, PIPDIC Industrial Estate,
Mettupalayam, Puducherry - 605 009. INDIA

Ph : +91-413-2271155, 2277685, 2277975 Fax : +91-413-2277684

Email ID : info@chem-in.com | Website : www.chem-in.com





MSME NATIONAL AWARD WINNER



www.chem-in.com



CHEMIN CAL

E & I WORKSTATION CUM CALIBRATION TEST BENCH
CHEMIN CAL - a Compact and Integrated Multifunction, Electrical workstation for testing Motors, Electrical items, Calibration & Testing & Trouble Shooting of any Electrical accessories.

CUSTOMIZED



HEAVY DUTY

MULTI FUNCTIONAL



OF YOUR ELECTRICAL SYSTEM

**QUALITY, RELIABILITY & SAFETY
ACCURACY & REPEATABILITY**

ENSURES

CARING FOR YOUR E & I CALIBRATION & FUNCTIONAL TESTING NEEDS

CHEMIN CAL

MULTIFUNCTIONAL C & I SIMULATION CUM CALIBRATION WORKSTATION



CHEMIN CAL is designed to manage Control and Instrumentation needs of an industry that requires accuracy, flexibility and dynamic performance. Our goal is to offer a platform for researchers, designers and manufacturing engineers that outshines all others with its modularity, reliability and flexibility.

The **CHEMIN CAL**'s integrated function and performance are consistent and committed to meet the modern C & I workstation / laboratory testing challenges.

SALIENT FEATURES

- ✦ Electro-Static Dissipative Mat at the table top to protect sensible equipments from charge generated by turbo electric activities.
- ✦ Separate provisions and lockers to protect your Manuals and Documents and testing accessories.
- ✦ Digital Indicators for Input Power Supply.
- ✦ Digital Indicators for Output of Auto Transformer.
- ✦ Digital Indicators for Output of 24V DC.
- ✦ Digital Indicators for mA / mV Input.
- ✦ 24 V DC Power Supply Source.
- ✦ Single Phase Variable Power Source (0 - 260 V AC; 50Hz).

INTEGRATES & ACCOMMODATES CALIBRATING EQUIPMENTS LIKE:

- ❖ Dead Weight Tester,
- ❖ Comparison Test Pump,
- ❖ Low Pressure Calibrator,
- ❖ Dry Block Temperature Bath,
- ❖ Universal Calibrator,
- ❖ Master Gauges,
- ❖ Digital Multimeter
- ❖ Manometer - Water / Mercury filled.
- ❖ Digital Manometer

INBUILT WITH:

- ✦ Pneumatic Tubings (SS - 316).
- ✦ Air Filter Regulator.
- ✦ 230V AC Power Sockets with Switches.
- ✦ Input Air Supply Gauge.
- ✦ 0.5 inch Thick Neoprine Rubberized Table Top with 1.5 inch Thick Wooden Base For Shock & Vibration Absorption.
- ✦ Lockable Drawers & Over Bench Cabinets for Safe Storage of Master Instruments, Calibration Accessories, Tools & Tackles, Instrumentation Documents and Drawings.



www.chem-in.com

CARING FOR YOUR C & I CALIBRATION & FUNCTIONAL TESTING NEEDS.

IN AN AREA WHERE ACCURACY CAN MAKE A WORLD OF DIFFERENCE...



MSME NATIONAL AWARD WINNER



CHEMIN CAL ELECTRICAL TEST BENCH

GENERAL SPECIFICATIONS:

In addition to the Motor Testing, different output voltages like 30V AC, 110V DC, 60V DC, 24V DC etc. can be taken for different utility purpose.

CHEMIN CAL Electrical Test Bench

Customer : M/s. INTECSA – ABU DHABI, U.A.E

End User : Ruwais Refinery, Ruwais, Abu Dhabi

SALIENT FEATURES:

- Electrical Motor Test Bench is completely stand-alone unit, which conducts the various routine tests like Insulation Test, No Load Test, Winding Resistance Test, Blocked Rotor Test etc. for a AC Motor.
- The system acquires various parameters from the test instruments on real time basis and analyses the data for preparation of test report.
- This is equipped with “Motor Test Pro” which is used for Motor Testing and allied functions.



- This system will increase the productivity, will acquire the testing data online and log to the database.
- It will reduce testing-time and will solve error-free complex calculation. It will generate instant error-free report in a single click.



PRODUCT DESCRIPTION:

Table Top Mounting type Instrument / Electrical Test Bench



SALIENT FEATURE:

- Modular Design
- Calibration of Multiple Electronic and Pneumatic Instruments
- Maintenance Free
- Long Endurance

CHEMIN CAL Instrument Test Bench
Customer : M/s. DAE – VECC, KOLKATTA



CHEMIN CONTROLS AND INSTRUMENTATION PVT. LTD.,



C-102 to 106, 110 to 114, 17th Cross, PIPDIC Industrial Estate,
Mettupalayam, Puducherry - 605 009. INDIA
Ph : +91-413-2271155, 2277685, 2277975 Fax : +91-413-2277684
Email ID : info@chem-in.com | Website : www.chem-in.com



Typical View of CHEMIN C & I Tailor Made Electrical Panels

30KW Heater Bank Hot Air Blower
Customer : Hamen



Inverter Panel Supplied to
M/s. LNT Howden for Malwa Project



LT ACB Panel - Outdoor
Doosan Obra & Jawaharpur Project



VFD with MCC Panel M/s. Sterlite, Tuticorin

LT AC PDB Drawout Panel
Customer : NLC Switch Yard, Neyveli



Mobile Electrical 200Kw Heater Load Test Unit
Customer : SHAR



Electrification

ESP Switch Gear Panels



LT ACB Panel
M/s. Stranich, Hyderabad

5.5Kw, 110V DC Starter Box
M/s. BHEL, Trichy

HT Metering Cubicle
Doosan Obra & Jawaharpur Project



Typical View of CHEMIN C & I Tailor Made Electrical Panels

Electrification



630 KW / 200 KW VFD PANEL



ACB Electrical Add ON Panels



22 KV Transformer Cubicle Panels



Out Door Light Distribution Board



Variable Frequency Drive Panels



Scout Blower Control Panel



**AC / DC
Power Distribution Boards**



ACB Control Unit Panels



**50 KV / 70 KV
DC Disconnecting Switch Boxes**

FLOW CALIBRATION TEST FACILITY



Flow Calibration Test Facility
Customer : M/s. DAE, Mumbai

SALIENT FEATURE:

- Calibration can be done for different ranges of Flow meter i.e. from ½" to 6"
- Upto 5 Flow meters can be calibrated simultaneously
- Fully Automated control with PLC and VFD
- Automatic Calibration report generation
- Long Endurance and Maintenance Free.

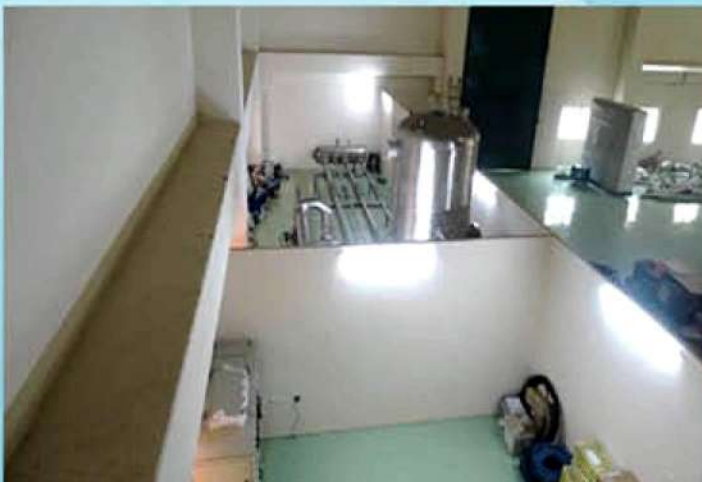
MAJOR EQUIPMENTS

- PLC Panel
- VFD Panel
- Electronic Console
- Magnetic Flowmeter
- Pressure, Temperature & Level Transmitter
- Storage Tank Capacity of 3000 Ltrs
- Safety Relief Valve
- Pump & Motor (55KW & 22KW)
- Interconnecting Spool Pieces of Size from 2" to 6"
- Control Valves
- Isolation Valves of Size from 2" to 6"



PRODUCT DESCRIPTION:

Calibration Range is 10 m³/hr to 150 m³/hr with an high accuracy of ±0.1%



FLOW CALIBRATION TEST FACILITY



Flow Calibration Test Facility
Customer : M/s. YIL, Bangalore

SALIENT FEATURE:

- Calibration can be done for different ranges of Flow meter i.e. from 1/2" to 4"
- Fully Automated control with PLC and VFD
- Automatic Calibration report generation
- Long Endurance and Maintenance Free

PRODUCT DESCRIPTION:

Calibration Range is 10 m³/hr to 150 m³/hr with an high accuracy of $\pm 0.1\%$



CHEMIN CONTROLS AND INSTRUMENTATION PVT. LTD.,



C-102 to 106, 110 to 114, 17th Cross, PIPDIC Industrial Estate,
Mettupalayam, Puducherry - 605 009. INDIA
Ph : +91-413-2271155, 2277685, 2277975 Fax : +91-413-2277684
Email ID : info@chem-in.com | Website : www.chem-in.com





Instrumentation

Typical View of CHEMIN C & I Tailor Made Instrumentation Panels



Turbine Gauge Panels



Slant Orifice Plate



Turbine Control Panels



Local Gauge Boards



Air Pre-Heater Instrument Panel



Instrumentation Control Desks



**Cooler Flap Gate
Pneumatic Control Panel**



Instrument Junction Boxes



**Instrumentation Analyzer Panel
Enclosure Tubing System**

Instrumentation

**Typical View of CHEMIN C & I
Tailor Made Instrumentation Panels**



Local Instrument Enclosures



LIE - Inner View



Local Instrument Racks



Dry Gas Seal Control Skid



Modular Control Desk



MIMIC Panel



**Purge Panels for
Hazardous Area**



Operator Control Desk



**Customized Local Instrument
Racks**

ADVANCED PROCESS CONTROL SIMULATION PLANTS

CHEMIN C & I®



MSME NATIONAL AWARD WINNER



Process Control Simulation Skid
M/s. Kuwait University thro' M/s. Equate Petrochemical

Features:

- Electrical control panel with PC Interface Module.
- Temperature, Flow, Pressure, Level Control
- On-Off, P, PI, PID Control, PLC Control, DCS Control
- Open loop tuning by Process reaction curve
- Closed loop tuning by ZIEGLER-NICHOLS method
- Stability analysis by Bode Plot
- Cascade, Feed-Forward and Ratio Control
- Compressor and Pump Control with Variable Frequency Drives (VFD)

Range of Experiments:

1) Single Loop feedback Control with PID control, Tuning, stability, characteristics of following process

- Closed Tank Pressure Control by Air / Water.
- Inlet Flow and Outlet Flow manipulation using Pneumatic Control Valves for level control
- Process Flow control through pump outlet
- Thyristorised Temperature control by directly heating water in a tank



Process Simulation System for Pressure and Flow
M/s. Saudi Aramco thro' M/s. Yokogawa



2) Multiloop Control with PID control, Tuning, stability, characteristics of following process

- Feed forward control for Temperature
- Feed forward & Feedback control for Level
- Three element control System
- Cascade control for Level & Pressure
- Cascade control for Temperature & Flow
- Cascade control for Level & Flow
- Ratio Control for Flow

3) Study of Co-efficient of Discharge for Orifice & Venturi meter

4) Study of Pressure Transmitter and Differential Pressure Transmitters Input & Output calibrations

5) Study of Control Valve characteristics & Co-efficient

6) Study of Valve Positioning in Motorised control valve and Pneumatic control valves

7) Study of SCADA Software / Computerised control system

PROCESS SIMULATION SKIDS



MSME NATIONAL AWARD WINNER



PRESSURE CURING SYSTEMS



Process Control Simulation Water Batch Plant
M/s. DOW Chemicals, Chennai



Double Opposed Seal Gas System for Tail Gas Blower
M/s. Reliance Jamnagar J3 Project thro' M/s. Atlascopco & Flowserve



Instrument Pilot Plant
M/s. Kongu Engineering College



Process Simulation System for Flow & Level Control
M/s. NIT Agartala thro' M/s. Yokagawa

CHEMIN CONTROLS AND INSTRUMENTATION PVT. LTD.,

C-102 to 106, 110 to 114, 17th Cross, PIPDIC Industrial Estate,
Mettupalayam, Puducherry - 605 009. INDIA

Ph : +91-413-2271155, 2277685, 2277975 Fax : +91-413-2277684

Email ID : info@chem-in.com | Website : www.chem-in.com



"Instrumentation, Electrification, Automation & Pre-Fab Infra"



ISO 9001 - ISO 14001
OHSAS 18001

BUREAU VERITAS
Certification

IND12.5175/01, IND12.5176/01, IND12.5175/02



RANGE OF PRODUCTS & SERVICES

- Residential Buildings
- Industrial Buildings
- Site Offices
- Staff Quarters
- Mobile Labs
- Testing labs
- Roof Top buildings
- Porta cabins
- Security cabins
- Toilet blocks
- Parking Shed
- Canteen
- Indoor Stadium
- PEB E – Houses & etc.

Pre-Engineered, Pre-Fabricated, Dismantable and Reinstallable type Site Office BHEL, Suratgarh.



Inner View of Site Office



Inner View of Site Office



Inner View of Conference Room



SALIENT FEATURES

Low Cost
Fast Implementation
Structural Integrity
Uniform Quality
Simple Construction
Maintenance Free
Thermal Insulation
Fire-Proof
Moisture Proof
Sound Proof
Light Weight

Inner View of GM Room



www.chem-in.com

“ Eco-Friendly Buildings using Alternate Technology ”

Pre-Engineered, Pre-Fabricated, Dismantable and Reinstallable type Residential Quarters for BHEL at Suratgarh, Rajasthan



Pre-Engineered, Pre-Fabricated Dismantable and Reinstallable type House made in CHEMIN factory with advanced Plastocrete Technology



Inner View - Modular Kitchen



Inner View - Hall



Inner View - Bedroom



Inner View - Bathroom



“ Eco-Friendly Buildings using Alternate Technology ”

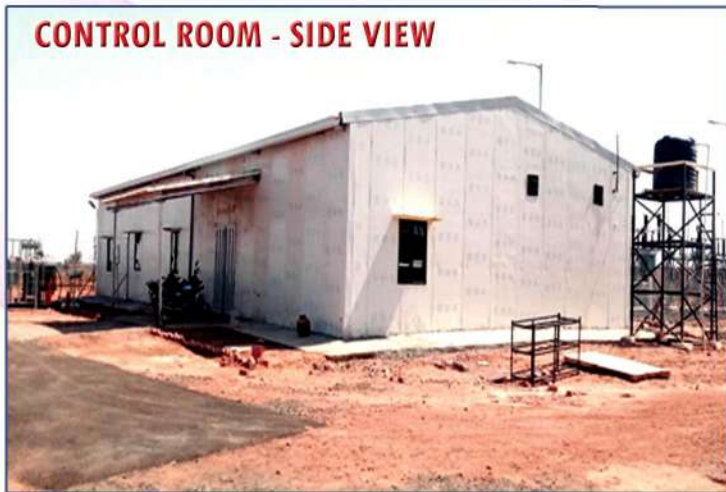
PEB E-HOUSE

Modular, Smart, Pre-Fabricated Control Room, Praxair - JSW



Pre-Engineered and Pre-Fabricated PUF Paneled Control Room & Inverter Rooms including Civil Works - 15Mw Solar Powered Project - BHEL, Charanka, Gujarat

CONTROL ROOM - SIDE VIEW



CONTROL ROOM - INNER VIEW



Pre-Engineered and Pre-Fabricated Porta Cabins MADC, Shirdi Airport



“ Eco-Friendly Buildings using Alternate Technology ”

**Pre-Engineered, Pre-Fabricated, Portable,
Dismantable and Reinstallable type
Mobile Model Polling Booth (Solar Powered 1.5Kw)
to Election Dept., Puducherry**



**Pre-Engineered, Pre-Fabricated, Dismantable and
Reinstallable type Toilet Blocks, NTPC - Bihar Schools**

**Pre-Engineered, Pre-Fabricated
Police booth - SPI Global, Puducherry**



**Pre-Engineered, Pre-Fabricated
Bio Toilet , Dredging Corporation of India Limited**

**Pre-Engineered, Pre-Fabricated
Security Cabin**



CHEMIN CONTROLS AND INSTRUMENTATION PVT. LTD.,



SERVICES

C & I Field Erection and Commissioning Services

CHEMIN C & I draw upon its diverse industry experience to engineer the complete turnkey solutions for process industry from design, detailed engineering, drawing, documentation, procurement, supply to installation and commissioning, and we provide complete solutions under one roof in the field of C & I. Our process specialists are experts in Power, Refinery, chemical and Pharmaceutical plants, sugar, distilleries, paper, integrated steel plants and any process industry where steam, air and water is used.



Range of Services

www.chem-in.com

- **Electrical & Instrumentation System Design & Detail Engineering.**
- **Selection, Procurement & Supply of Instruments & Electrical Equipments with Installation Hardwares.**
- **Calibration, Erection, Testing & Commissioning of Electrical & Instrumentation Control Systems.**
- **Operation & Maintenance of Electrical and Instrumentation System.**



“Instrumentation, Electrification, Automation & Pre-Fab Infra”



Typical Instrumentation Installations



Field Erection Work



Local Mounted Instruments with Canopy



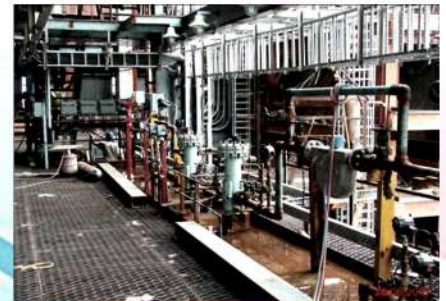
SWAS Panel Erection



Condensate Extraction Pump (CEP)



Main Control Room Activities



Field Erection Work



Field Erection Services



Boiler Main Cable Duct & Tray Work



Impulse Pipe Line Erection



"Service to the Nation through Instrumentation"



Typical Instrumentation Installations



Main Cable Laying and Dressing



Main Duct Erection Work



Pneumatic valves tubing & commissioning



Field Instrumentation Tubing Work



Cable Erection Work



Refinery Instrumentation Project



Refinery Instrumentation Project



Impulse Pipe Line Erection



Field Instrumentation Tubing Work



Impulse Piping with Instrument Erection



Typical Electrical Installations



Fencing work for Substation



Transformer Erection



Completion of Office area Substation



Transformer Erection for Office



HT Transformer Erection 31.5 Mva



LT Panel Erection



Control Room Panel / Desk Erection and Illumination Works



Street Lighting



Panel Erection Work at BHEL-ISC Suratgarh



Illumination Works at IISCo Burnpur

CHEMIN CONTROLS AND INSTRUMENTATION PVT. LTD.,



C-102 to 106, 110 to 114, 17th Cross, PIPDIC Industrial Estate,
Mettupalayam, Puducherry - 605 009. INDIA

Ph : +91-413-2271155, 2277685, 2277975 Fax : +91-413-2277684

Email ID : info@chem-in.com | Website : www.chem-in.com



“Service to the Nation through Instrumentation”



TRAINING

CHEMIN IIM

CHEMIN INSTITUTE OF INSTRUMENTATION MANAGEMENT

CHEMIN IIM introduced in 1998 with the aim to instigate fresh Engineers / Science Graduates to Control & Instrumentation Jobs to groom them into dedicated cadre of C & I Professionals and to build confidence in handling major Process Industries like Power / Chemical / Sugar / Paper Plant and refineries independently.



COURSE OUTLINE

- ❖ E & I Basic
- ❖ Design and Engineering Concept
- ❖ C & I Symbols and Standards
- ❖ E & I Field Installation Practices
- ❖ Advance Automation Techniques
- ❖ Hazardous and Safety Instrumentation
- ❖ Calibration and Testing Procedure
- ❖ Hands on Practical training in Calibration & Testing
- ❖ DCS, PLC & SCADA



DEMONSTRATIONS

- ⇒ Verse with various Instruments, Erection hardware & accessories used in Process plants and industries.
- ⇒ Knowledge about Installation Standards & Procedures for Instrumentation.
- ⇒ Learning the Art of Instrumentation Project Execution from the Concept to Commissioning.
- ⇒ Research and Development in I&C.

CORE ADVANTAGES

- ⇒ Experience and industry knowledge.
- ⇒ Widely experienced engineering and Instrumentation professionals.
- ⇒ Creative, effective solutions for customer issues.
- ⇒ Knowledge of established network and innovative ideas.
- ⇒ Flexible and competitive.





COURSE DETAILS AND ELIGIBILITY

ADCIM (Code-01) CHEMIN CERTIFIED ADVANCED DIPLOMA IN CONTROL & INSTRUMENTATION MANAGEMENT

Eligibility:

B.E / B.Tech / AMIE in Instrumentation, Computer Science, Electrical, Mechanical, Chemical, Electronics and Communication Engineering / Post Graduate Degree in Physics, Electronics & Instrumentation.

DCIM (Code - 02) CHEMIN CERTIFIED DIPLOMA IN CONTROL AND INSTRUMENTATION MANAGEMENT

Eligibility :

- A) Diploma in Instrumentation, Electrical, Mechanical, Chemical, Electronics and Communication Engineering.
- B) B.Sc. with Physics or Mathematics as Main or Ancillary.
- C) B.Sc. Instrumentation / Electronics / Electrical / Computer Science.

COURSE DURATION

FOR FRESH ENGINEERING GRADUATES / DIPLOMA HOLDERS ASPIRING FOR OJT (ON JOB TRAINING)

2 - 3 months inhouse training at CHEMIN - IIM Instrumentation Centre, Puducherry. After this, will be posted as Instrument Engineer / Technician (Probationary) at anyone of CHEMIN C&I Client's Project sites anywhere in India.

FOR SPONSORED CANDIDATES FROM INDUSTRY / INSTITUTION / ORGANISATIONS

2 - 3 months inhouse training at CHEMIN - IIM Instrumentation Center, Puducherry.



CHEMIN CONTROLS AND INSTRUMENTATION PVT. LTD.,

C-102 to 106, 110 to 114, 17th Cross, PIPDIC Industrial Estate,
Mettupalayam, Puducherry - 605 009. INDIA

Ph : +91-413-2271155, 2277685, 2277975 Fax : +91-413-2277684

Email ID : info@chem-in.com | Website : www.chem-in.com



“Instrumentation, Electrification, Automation & Pre-Fab Infra”

DETAILS OF JOBS EXECUTED BY CHEMIN C&I



TURNKEY / DESIGN & ENGINEERING (ELECTRICAL AND INSTRUMENTATION)

- DESIGN, MANUFACTURING AND SUPPLY OF INSTRUMENT PILOT PLANT - KUWAIT UNIVERSITY THRO' M/S. EQUATE PETRO CHEMICAL COMPANY, KUWAIT.
- DESIGN, MANUFACTURING AND SUPPLY OF PRESSURE CURING SYSTEM WITH SURGE TANK - M/S. DRDO - DEFENCE RESEARCH AND DEVELOPMENT ORGANIZATION.
- BOP C & I PACKAGE INCLUSIVE OF PLC FOR 1000MW(4 X 250MW) COAL BASED POWER PROJECT – M/S.JINDAL POWER LIMITED, TAMNAR, RAIGARH, INDIA.
- WATER BATCH PLANT - M/S. DOW INTERNATIONAL CHEMICALS LTD., CHENNAI, INDIA.
- PREPARATION OF ENGINEERING DOCUMENTS FOR TRAY, JB, INSTRUMENT,ETC. FOR C&I WORK – M/S. KERALA METAL & MINERAL LIMITED, KOLLAM, KERALA THRO' M/S. YOKOGAWA BLUE STAR LTD., BANGALORE.
- TURNKEY ELECTRICAL & INSTRUMENTATION WORK – M/S. SHAR SRIHARIKOTA.
- TURNKEY INSTRUMENTATION INCLUDING SUPPLY, CALIBRATION, ERECTION, TESTING AND COMMISSIONING OF CONTROL AND INSTRUMENTATION JOB AT T.V. BULB PROJECT – M/S. BHARAT ELECTRONICS LTD., MIDC, TALOJA.
- DESIGN, FABRICATION, ERECTION, TESTING AND COMMISSIONING OF CONTROL AND INSTRUMENTATION TRAINING SYSTEMS - HEAD OF THE DEPARTMENT OF INSTRUMENTATION ENGINEERING, ANNAMALAI UNIVERSITY.
- DETAILED ENGINEERING AND FIELD ENGINEERING WORK - M/S.VANAVIL DYES & CHEMICALS LTD., CUDDALORE.
- ENGINEERING WORK – M/S.HINDUSTAN NEWPRINT PAPERS LTD., PIRAVAM, KOTTAYAM, KERALA.
- ENGINEERING WORK - M/S.SHASUN CHEMICALS & DRUGS LTD., CHENNAI.
- PARTIAL ENGINEERING, SUPPLY, ERECTION & COMMISSIONING - M/S.TANFAC, CUDDALORE.

POWER & STEEL (E&I) – 1000 MW TO 490 MW



- 2 X 1000 MW , UNIT 1 & 2 , NUCLEAR POWER PLANT - M/S. NPCIL KUDANKULAM, TAMIL NADU THRO' M/S. BHARAT HEAVY ELECTRICALS LTD., CHENNAI.
- 5X800 MW ULTRA MEGAPOWER PLANT. – M/S.CGPL MUNDRA, GUJARAT THRO' M/S. INVENSYS INDIA LTD., NAVI MUMBAI, MAHARASHTRA.
- 2 X700 MW RAJPURA THERMAL POWER PROJECT - M/S. L&T MHI BOILERS PVT. LTD., FARIDABAD.
- PACKAGE 8 (I & C WORK) FOR IPP PROJECT, 2X 600 MW LOCATED AT VEDANDA POWER PROJECT, JHARSUGUDA, ORISSA. M/S.SEPCOIII ELECTRIC POWER CONSTRUCTION CORPORATION, CHINA.
- MUNDRA 2 X 660 MW AT APL POWER PROJECT - M/S. SHANDONG TIEJUN ELECTRIC POWER ENGINEERING CO. LTD., CHINA.
- 2X500 MW UNIT # 1 & 2 AT MEJIA -B THERMAL POWER STATION, WEST BENGAL. - M/S. BHARAT HEAVY ELECTRICALS LTD., PSER, KOLKATA.
- 4 X 500 MW STAGE II & III OF NTPC AT VINDHYACHAL SUPER THERMAL POWER STATION, VINDHYACHAL -- M/S. BHARAT HEAVY ELECTRICALS LTD., PSWR, NAGPUR.
- 4 X 500 MW OF STAGE II FOR NTPC AT TALCHER SUPER THERMAL POWER PLANT, ANGUL, ORISSA - M/S. BHEL PSSR , CHENNAI.
- 1 X 500 MW OF NTPC AT RAMAGUNDAM SUPER THERMAL POWER PLANT, RAMAGUNDAM - M/S. BHEL PSSR , CHENNAI.
- 1 X 500 MW AT BIRSINGHPUR THERMAL POWER STATION, BIRSINGHPUR, DIST. UMARIA. -- M/S. BHARAT HEAVY ELECTRICALS LTD., PSWR, NAGPUR.
- 2 X 500 MW AT SIPAT THERMAL POWER STATION, STAGE II, BILASPUR DIST, CHATTISGARH - M/S. BHEL PSSR , CHENNAI.
- 2 X 490 MW, UNIT 5 & 6, DADRI ,NATIONAL CAPITAL THERMAL POWER PROJECT (NCTPP) , NTPC. - M/S. BHARAT HEAVY ELECTRICALS LTD., PSNR, NOIDA.

POWER & STEEL (E&I) – (350MW-210MW)

- 1 X 350 MW GT AT KAYAMKULAM COMBINED CYCLE POWER PLANT, ALLEPEY, KERALA
- 2 X 250 MW AT BINA POWER SUPPLY COMPANY LTD, BINA THERMAL POWER PROJECT BINA, SAGAR, MADHYA PRADESH.
- 1 X 250 MW AT NEW PARLI THERMAL POWER STATION, PARLI, DIST. BEED, MAHARASHTRA
- 2 X 250 MW AT MEJIA THERMAL POWER STATION, KOLKATA
- 3 X 250 MW AT KOTHAGUDAM THERMAL POWER STATION, PALONCHA, A.P.
- 1 X 250 MW OF SURATGARH THERMAL POWER STATION, RAJASTHAN.
- 7 X 210 MW STAGE II AT NLC LTD., THERMAL POWER STATION-I, NEYVELI.
- 2 X 210 MW AT NLC LTD., THERMAL POWER STATION-I EXPANSION, NEYVELI.
- 5 X 210 MW OF WBSEB AT BAKRESWAR THERMAL POWER PLANT, WEST BENGAL
- 2 X 210 MW AT FERROZ GANDHI UNCHAHAR THERMAL POWER STATION, UNCHAHAR.
- 3 X 210 MW OF KPCL AT RAICHUR THERMAL POWER STATION, RAICHUR
- 4 X 210 MW AT VIJAYAWADA THERMAL POWER STATION, VIJAYAWADA
- 2 X 210 MW AT ROYALASEEMA THERMAL POWER PLANT, A.P.
- 1 X 210 MW AT MEJIA THERMAL POWER STATION, KOLKATA
- 1 X 210 MW AT TUTICORIN THERMAL POWER STATION, TNEB, TUTICORIN.

CHEMIN C&I®



MSME NATIONAL AWARD WINNER



POWER & STEEL (E&I) – (CCPP & OTHERS)

- 4 X 135 MW POWER PROJECT AT RAIGARH, CHHATTISGARH - M/S. JINDAL STEEL & POWER LTD., NOIDA.
- GURU GOBIND SINGH REFINERIES PROJECT (CPP) BATHINDA (153 MW) OF HPCL MITTAL ENERGY LTD., PUNJAB. - M/S. BHARAT HEAVY ELECTRICALS LTD., PSNR, NOIDA.
- R&M AND UP-RATING JOB OF UNIT-3 110 MW, GNDTP BATHINDA. - M/S. BHARAT HEAVY ELECTRICALS LTD., PSNR, NOIDA.
- 2 X 110 MW OF R&M PROJECT AT ENNORE THERMAL POWER STATION, CHENNAI.
- 1 X 110MW OF R & M AT GEB, UKAI, GUJARAT.
- 1 X 60 MW OF FLY ASH EXCAVATION SYSTEM AT ENNORE THERMAL POWER STATION, CHENNAI.
- 2 X 125 MW GUJARAT INDUSTRIAL POWER CORPORATION LTD, SLPP, MANGROL, GUJARAT.
- 1 X 115 MW 2X180 TPH HRSGS AT DVB PRAGATI COMBINED CYCLE POWER PROJECT, DELHI.
- 1 X 110 MW OF COMBINED CYCLE POWER PLANT, FARIDABAD, HARYANA.
- 1 X 108 MW OF COMBINED CYCLE POWER PLANT (TNEB) AT KOVIL KALAPAL
- 1 X 101 MW OF COMBINED CYCLE POWER PLANT AT KUTTALAM GAS TURBINE POWER PROJECT NAGAPATTINAM DIST.
- 1 X 95 MW OF COMBINED CYCLE POWER PLANT AT VALUTHUR GAS TURBINE POWER PROJECT, RAMNAD DIST.
- 750 MTPD COKE CALCINATIONS PLANT PORT AREA AT RCL-VISAKHAPATNAM THROUGH M/S.L &T.

POWER - (CO-GEN)BIOMASS&BAGASSE/GAS COMPRESSOR BASED PROJECTS

- TNEB - VALUTHUR, TNEB - KUTTALAM, TNEB – KOVILKALAPPAL, NTPC – KAYAMKULAM, NTPC – FARIDABAD, PRAGATHI POWER – NEWDELHI, BASIN BRIDGE GAS TURBINE PROJECT, CHENNAI, MADRAS REFINERY LTD., MANALI, MADRAS FERTILIZERS, CHENNAI.
- EID PARRY - NELLIKUPPAM, EID PARRY – PUGALUR, RAJASHREE SUGARS & CHEMICALS - VILLUPURAM, PENNADAM SUGARS, ETC., SYNERGY SHAKTHI RENEWABLE ENERGY LT.B.,

OIL & GAS

- SUPPLY, INSTRUMENTATION, ERECTION & INSTALLATION JOB FOR COAL GASIFICATION PROJECT, JSPL, ANGUL, ORISSA.
- OFF SHORE & YARD PROJECT: ELECTRICAL & INSTRUMENTATION WORK ON NLM PLATFORM (MAIN DECK & HELIDECK) AT MDL, MANGALORE YARD.
- ELECTRICAL & INSTRUMENTATION WORK FOR MAZAGON DOCK LTD., DECK PROJECT AT MANGALORE (EIL CONSULTANT).
- LPG PLANT: SPHERE CONTROL AND INSTRUMENTATION WORK AT CBE LPG PLANT AT COIMBATORE THROUGH BHARAT PETROLEUM CORPORATION LIMITED. (BPCL)
- CCK PIPELINE PROJECT: ERECTION, TESTING AND COMMISSIONING OF INSTRUMENTATION FIELD WORK FOR CCK PIPELINE PROJECT FOR PETRONET CCK LIMITED THROUGH DODSAL AT IRUGUR / COIMBATORE AND KARUR.
- VACCUM GAS OIL (PETROLEUM REFINERY PROJECT) ERECTION, TESTING , LOOP CHECKING AND COMMISSIONING OF INSTRUMENTATION JOB AT VGO 3 & 4 (VACUM GAS OIL MAIN PLANT & VGO- 4)AT RELIANCE PETROLEUM LILIMITED, JAMNAGAR PROJECT.
- LPG STORAGE : LPG STORAGE PLANT INSTRUMENTATION ERECTION WORK AT SPIC, TUTICORIN.
- TERMINAL AUTOMATION PROJECT: SUPPLY, ERECTION ,TESTING & COMMISSIONING INCLUDING CIVIL WORK TRENCHS, EXCAVATION, SOIL PROVIDING , RIVER SAND ,BRICK, ETC FOR TERMINAL AUTOMATION PROJECT AT BHARAT PETROLEUM CORPORATION LIMITED THROUGH INVENSYS-FOXBORO/APV/IBS.

- DE-HYDRO-DE-SULPURIK-DHDS,ETP,FIREDHEATOR-FH: CONTROL AND INSTRUMENTATION ERECTION , TESTING ,LOOP CHECKING & COMMISSIONING OF DHDS, ETP, FIRED HEATOR, HYDROGEN, OXYGEN& OFFSITE UTILITIES (ALL TANK FARMS) AT HINDUSTAN PETROL EUM CORPORATION LIMITED, VIZAG REFINARY, VISAGAPATTINAM, AP. THROUGH L&T .
- SRU PLANT : CONTROL AND INSTRUMENTATION ERECTION, TESTING, LOOP CHECKING & COMMISSIONING OF SULPURIK PLANT AT CHENNAI PETROLEUM CORPORATION LTD.,
- INSTRUMENTATION ERECTION & COMMISSIONING WORK FOR GAS CRACKER & HDPE PROJECT AT INDIAN PETROCHEMICAL CORPORATION LTD.,, KANDAR, DEHEJ, GUJARAT.
- ATF TANK FARM FACILITY, PARTIAL ENGG., PROCUREMENT, SUPPLY, ERECTION & COMMISSIONING (INCLUDING ATF-FUEL-TRUCK OFF LOADING GANTRY, HYDRANT PUMP, U/GTANK, DISPENSER/REFUELLER, ETC.,) INTERNATIONAL AIRPORT GMR HYDERABAD THROUGH M/S. IMC.
- INSTRUMENTATION ERECTION & COMMISSIONING WORK FOR TPH HRSG AT PANIPAT REFINERY – INDIAN OIL CORPORATION LTD., PANIPAT HARYANA.
- INSTRUMENTATION ERECTION WORK AT BPCL, COCHIN THROUGH TATA HONEYWELL.
- TAMILNADU PETROPRODUCTS LIMITED: ERECTION, TESTING AND COMMISSIONING OF INSTRUMENTATION FIELD WORK FOR MOBCAT PILOT PLANT PROJECT AT TAMILNADU PETROPRODUCTS LIMITED, MANALI, CHENNAI.
- BULLETS PLANTS: REMOVAL OF EXISTING TUBE, SUPPLY, ERECTION, TESTING & COMMISSIONING OF C&I WORK FOR BULLETS A & B AT TAMILNADU PETROPRODUCTS LIMITED, CUDDALORE.
- PROPYLENE STORAGE: INSTRUMENTATION ERECTION WORK FOR PROPYLENE STORAGE PROJECT AT TAMILNADU PETROPRODUCTS LIMITED, CUDDALORE PORT, TAMILNADU.
- AMMONIA & UREA PROJECT: C&I ERECTION, TESTING & COMMISSIONING WORK FOR AMMONIA& UREA PROJECT AT MADRAS FERTILIZER LIMITED. MANALI, MADRAS, THROUGH HONEYWELL.
- AMMONIA PLANT REVAMP: ERECTION, TESTING & COMMISSIONING OF INSTRUMENTATION WORK FOR K1603 COMPRESSOR AREA AT AMMONIA REVAMP PLANT AT MADRAS FERTILIZER LIMITED. MANALI, MADRAS
- OXYGEN PLANT: INSTRUMENTATION WORK AT BHORUKA GASES LIMITED(FORMERLY KARNATAKA OXYGEN LIMITED),BANGALORE.
- OXYGEN PLANT: C&I ERECTION, TESTING & COMMISSIONING WORK FOR 460 MTPD, NEW OXYGEN PLANT AT STERLITE INDUSTRIES, TUTICORIN.
- EXPLOSIVE GAS PROJECT: INSTRUMENTATION ERECTION & COMMISSIONING WORK AT TAMILNADU INDUSTRIAL EXPLOSIVES LTD.
- LIGNITE TEST FURNACE (GAS BASED) PROJECT AT NLC, NEYVELI THROUGH HRL TECHNOLOGY PTY LTD., AUSTRALIA.

CHEMICAL PETROCHEMICAL & FERTILIZERS

- TURNKEY INSTRUMENTATION CONTRACT FOR CCR PLANT PROJECT AT STERLITE INDUSTRIES (INDIA) LTD., TUTICORIN
- TURNKEY INSTRUMENTATION CONTRACT FOR ASIAN PAINTS INDIA LTD., SRIPERUMBUTHUR
- TURNKEY ELECTRICAL & INSTRUMENTATION WORK AT SELLENIUM PROJECT AT STERLITE, TUTICORIN.
- TURNKEY INSTRUMENTATION CONTRACT FOR VANAVIL DYES & CHEMICALS LIMITED, CUDDALORE.
- I & C WORK FOR IGFC, BIRLA COPPER PROJECT AT BHARUCH, GUJARAT.
- TURNKEY INSTRUMENTATION CONTRACT FOR SHASUN CHEMICALS & DRUGS LTD., PONDICHERRY.
- C&I WORKS FOR THIRUMALAI CHEMICALS LTD., RANIPET.
- C&I WORKS FOR CHEMPLAST SANMAR LTD., METTUR & KARAIKAL.
- C & I WORKS AT CHEMFAB CHLORATES LTD.,
- C&I WORKS FOR CABOT SANMAR LTD., METTUR.
- C&I WORKS FOR ORIGIN AGROSTAR LIMITED, CUDDALORE
- C&I WORKS FOR HINDUSTAN LEVER LTD., HOSUR & PONDICHERRY
- C & I WORKS AT INDIAN ORGANIC CHEMICALS LTD.,
- C & I WORK AT TAMIN THROUGH L & T.,
- C & I WORK AT FURTURA POLYMERS
- C & I WORK AT BALMER & LAURIE LTD.,
- C & I WORK AT TAMILNADU CHLORINE & ALLIED CHEMICALS.
- ELECTRICAL, C & I WORK AT KOTHARI PETROCHEMICALS LTD., KARAIKAL
- ELECTRICAL , C & I WORK AT ENGLISH INDIAN CLAYS



MSME NATIONAL AWARD WINNER





MSME NATIONAL AWARD WINNER



- ✦ M/S. TAMIL NADU NEWSPRINT AND PAPERS LTD., KAGITHAPURAM - INSTRUMENTATION WORK RELATED TO INDUCTION PROFILER IN PM#2., DIP AND RSPS AREA.
- ✦ M/S. RSCL, TRIDENT SUGARS, HYDERABAD.
- ✦ C&I WORKS FOR TAMIL NADU NEWSPRINT & PAPERS LTD., KAGITHAPURAM.
- ✦ C&I WORKS FOR ITC BHADRACHALAM PAPER BOARDS LTD., SARAPAKA, A.P.
- ✦ C&I WORKS FOR HINDUSTAN NEWSPRINT & PAPERS LTD., KOTTAYAM, KERALA.
- ✦ ELECTRICAL AND C&I WORKS FOR EID PARRY INDIA LTD., NELLIKUPPAM & PUGALUR.
- ✦ C&I WORKS FOR ARUNACHALAM SUGAR MILLS LTD., TIRUVANNAMALAI.
- ✦ TURNKEY INSTRUMENTATION CONTRACT FOR RAJSHREE SUGARS AND CHEMICALS LTD., MUNDIYAMBAKKAM.
- ✦ ELECTRICAL, C & I WORK AT KOTHARI SUGARS & CHEMICALS LTD., KARAİKAL

PRE-ENGINEERED & PRE-FAB

- ✦ DESIGN, MANUFACTURING, SUPPLY, ERECTION & FINISHING WORKS, ETC. TO SITE PRE-FABRICATED OFFICE BUILDING (40M X 10M) USING PLASTOCRETE PANELS INCLUDING AND ITS SUPPORTING STRUCTURE, INTERNAL & EXTERNAL PLUMBING & SEWAGE CONNECTIONS ALL COMPLETE FOR 2 X660 MW RRVUNL, STAGE V, U#7&8 SURATGARH PROJECT. – BHEL PSER.
- ✦ PRE-ENGINEERED AND PRE-FABRICATED TOILET BLOCKS FOR SWATCH BHARAT CAMPAIGN – NTPC BIHAR
- ✦ ROOFTOP PRE FABRICATED GYM FACILITY – INDIAN COASTAL GUARD – PUDUCHERRY.
- ✦ PROVIDING AND FIXING OF ALUMINIUM ENCLOSURE AND FALSE CEILING FOR UNIT-2, DG1&2 EXCITATION PANEL ROOM. - MADRAS ATOMIC POWER STATION, NPCIL, KALPAKKAM.
- ✦ SOLAR POWERED MOBILE PRE-FABRICATED POLLING BOOTH - ELECTION COMMISSION OF PUDUCHERRY.
- ✦ MUTLI-PURPOSE PRE-ENGINEERED AND PRE-FABRICATED BUILDING - AARUPADAI VEEDU MEDICAL COLLEGE & HOSPITAL - PUDUCHERRY

O&M / ENGINEERING SUPPORT SERVICES (E&I)

- ✦ DEPUTATION OF MANPOWER AT SAMCHEONPO, SOUTH KOREA M/S. SIEMENS LTD., GURGAON, HARYANA.
- ✦ DEPUTATION OF MANPOWER FOR SHUTDOWN WORK.. M/S. STERLITE INDUSTRIES (INDIA) LTD., TUTICORIN.
- ✦ SUPPLY OF MANPOWER FOR CUTTING LINE AND FLOAT ERECTION AT CHENNAI II PROJECT M/S. SAINT - GOBAIN GLASS INDIA LTD., SRIPERUMBUDUR.
- ✦ C&I MAINTENANCE CONTRACT FOR MAIN PLANT & AUXILIARIES AT KCCPP. M/S. NTPC, KAYAMKULAM.
- ✦ ANNUAL CONTRACT FOR HIRING OF 8 NOS. ENGINEERS FOR C&I MAINTENANCE JOBS FOR THE YEAR 2003-04 M/S. PRAGATI POWER CORPORATION LTD., NEW DELHI .
- ✦ ANNUAL CONTRACT FOR HIRING OF 6 NOS. ENGINEERS FOR C&I MAINTENANCE JOBS FOR THE YEAR 2004-05 M/S. PRAGATI POWER CORPORATION LTD., NEW DELHI
- ✦ ANNUAL CONTRACT FOR PROVIDING SERVICE OF 5 NOS. ENGINEERS FOR CONTROL & INSTRUMENTATION MAINTENANCE JOB AT GTPS. M/S. INDRAPRASTHA POWER GENERATION CO. LTD., NEW DELHI
- ✦ 1 X 500 MW SGTPS, UNIT NO. #5 DAY TO DAY MAINTENANCE CONTRACT OF C&I SYSTEM. M/S. M.P. GENERATING ENGINEER COMPANY, BIRSINGHPUR (SGTPS)
- ✦ SITE SERVICES OF TWO ENGINEERS M/S. TATA HONEYWELL LTD.,PUNE
- ✦ ANNUAL MAINTENANCE CONTRACT' FOR CONTROL & INSTRUMENTATION AT NTPC - FARIDABAD.
- ✦ SUPPLY OF MANPOWER M/S. MIDDLE EAST ENTERPRISES ASAHI TECHNEION, ABU DHABI.
- ✦ PROVISION OF C & I CALIBRATION EQUIPMENTS ALONG WITH TECHNICIANS M/S. ASIA POWER PROJECTS LTD., CHENNAI.
- ✦ DEPUTATION OF COMMISSIONING ENGINEER TO TANZANIA M/S. LARSEN & TOUBRO LTD., CHENNAI
- ✦ SUPPLY OF MANPOWER FOR AES KELANITISA POWER PROJECT M/S. LARSEN & TOUBRO CEYLICO (PVT.) LTD., COLOMBO - 14.
- ✦ SUPPLY OF MANPOWER TO AESK PROJECT, SRI LANKA M/S. LARSEN & TOUBRO LTD., BARODA.
- ✦ DEPUTATION OF INSTRUMENTATION TECHNICIANS TO PRAXAIR INDIA, JAMSHEDPUR SITE PRAXAIR INDIA PVT. LTD., BANGALORE
- ✦ DEPUTATION OF SENIOR INSTRUMENTATION SUPERVISOR AT TARAPUR SITE. M/S. LARSEN & TOUBRO LTD., TARAPUR SITE
- ✦ DEPUTATION OF COMMISSIONING ENGINEER TO TANZANIA M/S. LARSEN & TOUBRO LTD., CHENNAI
- ✦ DEPUTATION OF INSTRUMENTATION SUPERVISORS - L&T- TISCO SITE, JAMSHEDPUR. M/S LARSEN & TOUBRO LIMITED, CHENNAI
- ✦ DEPUTATION OF INSTRUMENTATION SUPERVISORS - L&T - IOCL SITE, PANIPAT M/S LARSEN & TOUBRO LIMITED, CHENNAI
- ✦ SUPPLY OF MANPOWER FOR HOSPITAL PROJECTS IN SAUDI ARABIA. M/S. THINET INTERNATIONAL, SAUDI ARABIA.
- ✦ SUPPLY OF MANPOWER FOR COMMISSIONING OF C&I EQUIPMENTS FOR 445MW KONASEEMA CCPP PROJECT. M/S. LARSEN & TOUBRO LTD., BARODA.

GLOBAL JOBS EXECUTED

- M/S. PETROSERV CONTROLS & COMMUNICATIONS, QATAR. SUPPLY OF ELECTRICAL / INSTRUMENTATION WORKSTATION CUM CALIBRATION TEST BENCH AND PNEUMATIC TEST BENCH.
- M/S. ABDULLAH ALMUTAWA SONS CO., SAUDI ARABIA. DESIGN, MANUFACTURING & SUPPLY OF BASIC "CHEMIN-CAL" INSTRUMENTATION WORK STATION CUM CALIBRATION TEST BENCH.
- M/S. ABDULLAH ALMUTAWA SONS CO., SAUDI ARABIA. OMRON SWITCHING POWER SUPPLY SET, 100 - 240V AC INPUT, 600W, 27A @ 24V DC OUTPUT, COVERED AND FRONT MOUNTING TYPE DULY TESTED & ACCESSORIES WITH INTECH MOUNTING BRACKET FOR 300W & 600W SMPS.
- M/S. EQUATE PETROCHEMICAL CO. (K.S.C.C), KUWAIT. INSTRUMENT PILOT PLANT FOR KUWAIT UNIVERSITY (PILOT PLANT FITTED WITH TRASMITTERS, VALVES, PUMPS AND AERATION TOWER SUPPLIED IN SKID.
- YOKOGAWA INDIA LIMITED., PLOT NO. 96, ELECTRONIC CITY COMPLEX, HOSUR ROAD, BANGALORE - 560 100 DESIGN, MANUFACTURING & SUPPLY OF PROCESS SIMULATION SKID FOR ARAMCO SAUDI PROJECT.
- M/S. WEST KENYA SUGAR CO. LTD., KENYA SUPPLY OF 100 TPH BOILER CONTROL VALVES AND ACCESSORIES.
- M/S. YOKOGAWA SAUDI ARABIA COMPANY, AL-KHOBAR, KINGDOM OF SAUDI ARABIA INSTALLATION OF 4 GPS SYSTEM AT PETROKEYMA.
- M/S. MIDDLE EAST ENTERPRISES ASAHI TECHNEION, ABU DHABI. PROVIDING MANPOWER SERVICES.
- M/S. LARSEN & TOUBRO, BARODA PROVIDING MANPOWER SERVICES FOR AESK PROJECT, COLOMBO.
- SIEMENS LIMITED., EFIE WORKS, UNIT 37, GROUND FLOOR, SECTOR 18, HUDA, GURGAON-122015 MANPOWER DEPUTATION TO SOUTH KOREA SAMCHEONPO PROJECT.
- M/S. WEST KENYA SUGAR CO. LTD., KENYA SUPPLY OF ELECTROMAGNETIC FLOW METER.
- M/S. WEST KENYA SUGAR CO. LTD., KENYA SUPPLY OF ELECTROPNEUMATIC POSITIONER.
- M/S. WEST KENYA SUGAR CO. LTD., KENYA MILL LUBE OIL INSTRUMENTS.
- M/S. WEST KENYA SUGAR CO. LTD., KENYA SUPPLY OF ANALOG INPUT & OUTPUT MODULES.
- M/S. WEST KENYA SUGAR CO. LTD., KENYA SUPPLY, SUPERVISING OF ERECTION & COMMISSIONING OF PLC & SCADA FOR 12W BACK PRESSURE TURBINE, KAKAMEGA, KENYA & SUPPLY OF CONTROL SYSTEM FOR EVAPORATORS.
- INTECSA - ABUDHABI, DESIGN, MANUFACTURING AND SUPPLY OF ELECTRICAL TEST BENCH.
- MULTILINE TECHNICAL CO. WLL, SUPPLY OF ELECTRICAL CP JUNCTION BOX - FRP

A PARTIAL LIST OF OUR ESTEEMED CUSTOMERS



A Partial List of Our Esteemed Customers



CHEMIN CONTROLS AND INSTRUMENTATION PVT. LTD.,

C-102 to 106, 110 to 114, 17th Cross, PIPDIC Industrial Estate

Mettupalayam, Puducherry - 605 009 INDIA.

Phone: +91-413-2271155, 2277685, 2277975 Fax : +91-413-2277684

Website : www.chem-in.com Email ID : info@chem-in.com

