

Tier1 Report 28/06/2021

Activity from last week:

- ARC-CEs have been upgraded to 6.12
- Number of jobs slots per old generation WNs reduced to improve performance (14-16 generation).

Plans for the week:

Upgrade remaining xrootd to 5.2 on WNs and echo external gateways

Operational issues from last week:

FTS limits

Open GGUS tickets:

Ticket-ID	VO	Priority	Status	Last Update	Subject	Comments
152804	atlas	less urgent	assigned	2021-06-30 09:43:00	RAL-LCG2 deletion issues with error "The requested service is not available at the moment"	Sent TEAM notification mail to mail address lcg-support@gridpp.rl.ac.uk Public Diary: Hi, The deletion success rate has exceeded 90% for the last few hours (and averages about 95% for the last 7 days). Failures are primarily in DATADISK deletions. There does appear to be the following approximate relationship: N failures per 6 hours = deletion throughput [GB/s] x1000 Which is suggestive of a load-related effect with gridFTP that we have seen previously. We'll have a check for anything beyond a load-related effect, and otherwise monitor the rate. Cheers, James
152788	cms	urgent	waiting for reply	2021-06-30 09:49:00	Pilots at T1_UK_RAL	Public Diary: Selecting "ALL" in the "site" box in https://monit-grafana.cern.ch/d/imVLEAznz/pilots-logs-temporarily?orgId=11&var-factoryName=All&var-frontendName=All&var-frontendGroupName=All&var-siteName=All&var-entryName2=All&var-entryName=All&var-status=ERROR I can see the problem happens in other sites too. It is not a RAL-specific issue. My guess is that, if a pilot have been waiting too long in queue before start running, the proxy gets closer to expiration time. I don't know what happens

						then? Does the pilot factory renew the proxy and pushes somehow the new one to the already submitted pilots? Jose
152778	ops	less urgent	in progress	2021-06-30 08:18:00	[Dashboard] Issues detected at RAL-LCG2	Public Diary: Issue is currently being investigated.
152766	none	top priority	in progress	2021-06-28 09:42:00	Provide input for the WLCG tape tests (RAL-LCG2)	Public Diary: Assigning to relevant internal site group
152725	na62.vo.gri dpp.a c.uk	urgent	waiting for reply	2021-06-30 09:01:00	Data transfer from EOS to RAL	Hi, Actually, a entry of the user mapped to the CN=Robot: NA62 CDR was missing in the SRM config; sorry about that. I put it there now. Can you please try again now? Thanks, George
152682	none	less urgent	waiting for reply	2021-06-28 14:24:00	WN at rl.ac.uk is trasfering data via Genral IP and not LHCOPN	This is expected behaviour, worker nodes at RAL don't use LHCOPN or LHCONE. Just to note, RAL is still planning to join LHCONE in the very near future. This was delayed further by Covid restrictions. Can this ticket be resolved?
152658	cms	urgent	waiting for reply	2021-06-28 22:47:00	Active limit config in FTS3@RAL for transfer-lb.ultralight.org endhost	Optimizer seems to be working and reducing naturally the number of active files. Is this configuration change still necessaary?
152199	other	urgent	in progress	2021-06-15 10:47:00	robot certificate for gpp	Robot certificate recieved and placed on server, but not fully functional yet added identity to root user, but transfers and uploads are still not possible using it from the daemon server investigating issue
152009	lhcb	very urgent	on hold	2021-06-28 09:42:00	FTS3 transfers Failed (RAL => CERN) RAL-LCG2	We had a brief discussion about this in the LHCb ops meeting. Given the following points : 1. Ongoing test of xroot v5 and xcache at RAL WNs 2. This issue cannot be hunted down by hand and we just need to wait for a long time to see any such failures it was decided that it was more appropriate to put this ticket on hold for some suitably long time to see if the issue happens again.
151955	lhcb	top priority	in progress	2021-06-16 11:15:00	Checksums using xrootd on ECHO taking a long time.	I understand that the code for this is under review. To give more details - RAL is currently deep into the xrootd5.2 upgrade. Once this upgrade is done and the above checksum code review is finished and tested, it will be deployed - hopefully in a timescale of 1 - 2 weeks (crossing fingers). This will then

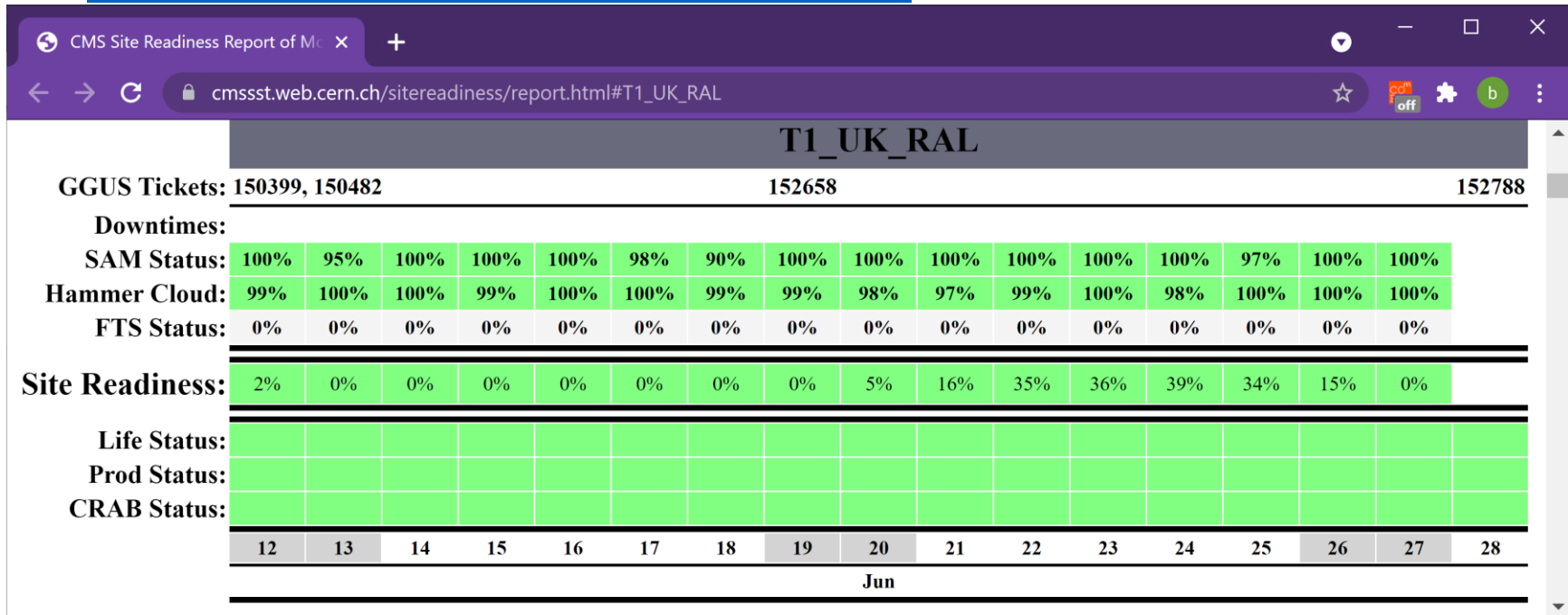
						hopefully enormously speed up returning the checksum when it is already available.
150888	dteam	less urgent	in progress	2021-06-15 10:55:00	pscheduler not to be running on lcgps01.gridpp.rl.ac.uk	Still trying to resolve cert for both new host and whether current host can be mitigated appropriately with a certificate which is acceptable
150653	lhcb	urgent	in progress	2021-06-15 10:34:00	FTS error: libX509SciTokensIssuer.so not found	Need to schedule upgrade
150482	cms	very urgent	in progress	2021-06-23 21:41:00	enabling AREX service at ARC-CE(s) at (T1_UK_RAL)	Hi Tom, the ALICE test job finished OK and its output was retrieved OK, cheers! Tom B has asked small VOs to test at dteam and Sites meeting.
150399	cms	less urgent	on hold	2021-06-15 12:50:00	WebDAV endpoint at RAL	xrootd 5.2 rolled out across 1/2 GWs and WNs. Reviewing possible low I/O rate for WNs.
142350	lhcb	top priority	on hold	2021-06-23 09:35:00	Proble accessing some LHCb files at RAL	As a possible mitigation for this issue (and other issues), we are exploring moving the workernode gateways to memory proxies. We are testing this on 10% of the farm, which should give us enough data to determine if LHCb analysis jobs on memory caching proxies exhibit the same behaviour as on XCaches.

Closed GGUS tickets:

Ticket-ID	Type	VO	Site	Priority	Responsible Unit	Status	Last Update	Subject	Scope
-----------	------	----	------	----------	------------------	--------	-------------	---------	-------

152482	USER	none	RAL-LCG2	urgent	NGI_UK	solved	2021-06-28 07:04:00	APEL migration from ActiveMQ to AMS - ARC-CE new settings (RAL-LCG2)	EGI
152380	USER	cms	RAL-LCG2	urgent	NGI_UK	closed	2021-06-29 23:59:00	SAM test failing for CE at T1_UK_RAL	WLCG

CMS: https://cmsst.web.cern.ch/sitereadiness/report.html#T1_UK_RAL



ATLAS:

<http://hammercloud.cern.ch/hc/app/atlas/siteoverview/?site=RAL-LCG2&startTime=2021-05-24&endTime=2021-05-31&templateType=isGolden>

RAL-LCG2_MCORE

957 (functional) ... 841 (functional) ... 839 (functional) ...

Template: 957 (functional) - PFT mc15 Sim_tf 21.0.16

Time	0	1	2	3	4	5	6	7	8	9	10	11	12	13	14	15	16	17	18	19	20	21	22	23	Eff[%]	
29/06/21	0	0	0	0	0	0	0	0	0	0	0	0	0	0	0	0	0	0	0	0	0	0	0	0	0	0
28/06/21	c	c	c	c	s	c	c	c	c	c	c	c	c	c	s	c	c	c	c	c	s	s	c	r	0	100
27/06/21	s	c	c	c	c	s	c	c	c	c	c	s	c	c	c	c	c	c	c	c	c	c	c	c	c	100
26/06/21	c	c	c	c	s	c	c	c	c	c	c	s	c	c	c	c	c	c	s	c	c	c	c	c	c	100
25/06/21	c	s	c	c	s	c	c	c	c	s	c	s	c	c	c	s	c	c	c	c	c	c	c	c	c	100
24/06/21	c	c	c	s	s	c	s	c	c	s	c	c	c	s	c	c	c	s	c	c	c	c	c	s	c	100
23/06/21	s	c	c	c	c	c	c	c	c	c	c	c	s	f	c	c	c	c	c	c	c	c	c	c	c	98
22/06/21	c	c	s	c	c	c	c	c	s	c	c	c	c	c	c	c	c	s	c	s	c	c	c	c	c	100
21/06/21	s	s	c	c	s	c	s	s	s	c	c	c	c	s	c	c	c	c	c	c	c	c	s	c	c	100

Report problem

HammerCloud-ATLAS

Not secure | hammercloud.cern.ch/hc/app/atlas/siteoverview/?site=RAL-LCG2&startTime=2021-06-21&endTi...

RAL

957 (functional) ... 952 (functional) ... 841 (functional) ... 883 (functional) ... 839 (functional) ...

1013 (functional)...

Template: 952 (functional) - AFT Eventloop 21.2.1 Analy

Time	0	1	2	3	4	5	6	7	8	9	10	11	12	13	14	15	16	17	18	19	20	21	22	23	Eff[%]	
29/06/21	0	0	0	0	0	0	0	0	0	0	0	0	0	0	0	0	0	0	0	0	0	0	0	0	0	0
28/06/21	c	c	c	c	c	c	c	c	c	c	c	c	c	c	s	c	c	c	c	c	c	c	m	0	0	100
27/06/21	c	c	c	c	c	c	c	c	c	c	c	c	c	c	r	c	c	c	c	c	c	c	c	c	c	100
26/06/21	c	c	c	c	c	c	c	c	c	c	s	s	c	m	c	c	c	c	c	c	s	s	s	c	c	100
25/06/21	c	c	c	c	c	c	c	c	c	c	c	c	c	s	s	c	c	c	c	c	s	c	c	c	c	100
24/06/21	c	c	c	c	c	c	c	c	c	c	s	c	r	s	s	c	c	c	c	s	c	c	c	c	c	100
23/06/21	c	c	c	c	c	c	c	c	c	c	s	c	s	f	s	c	c	c	c	c	c	c	c	c	c	99
22/06/21	c	c	c	c	c	c	c	c	c	c	c	c	c	c	c	c	c	c	c	c	c	c	c	c	c	100
21/06/21	c	c	c	c	c	c	c	c	c	c	c	c	c	c	m	c	c	c	c	c	c	c	c	c	c	100

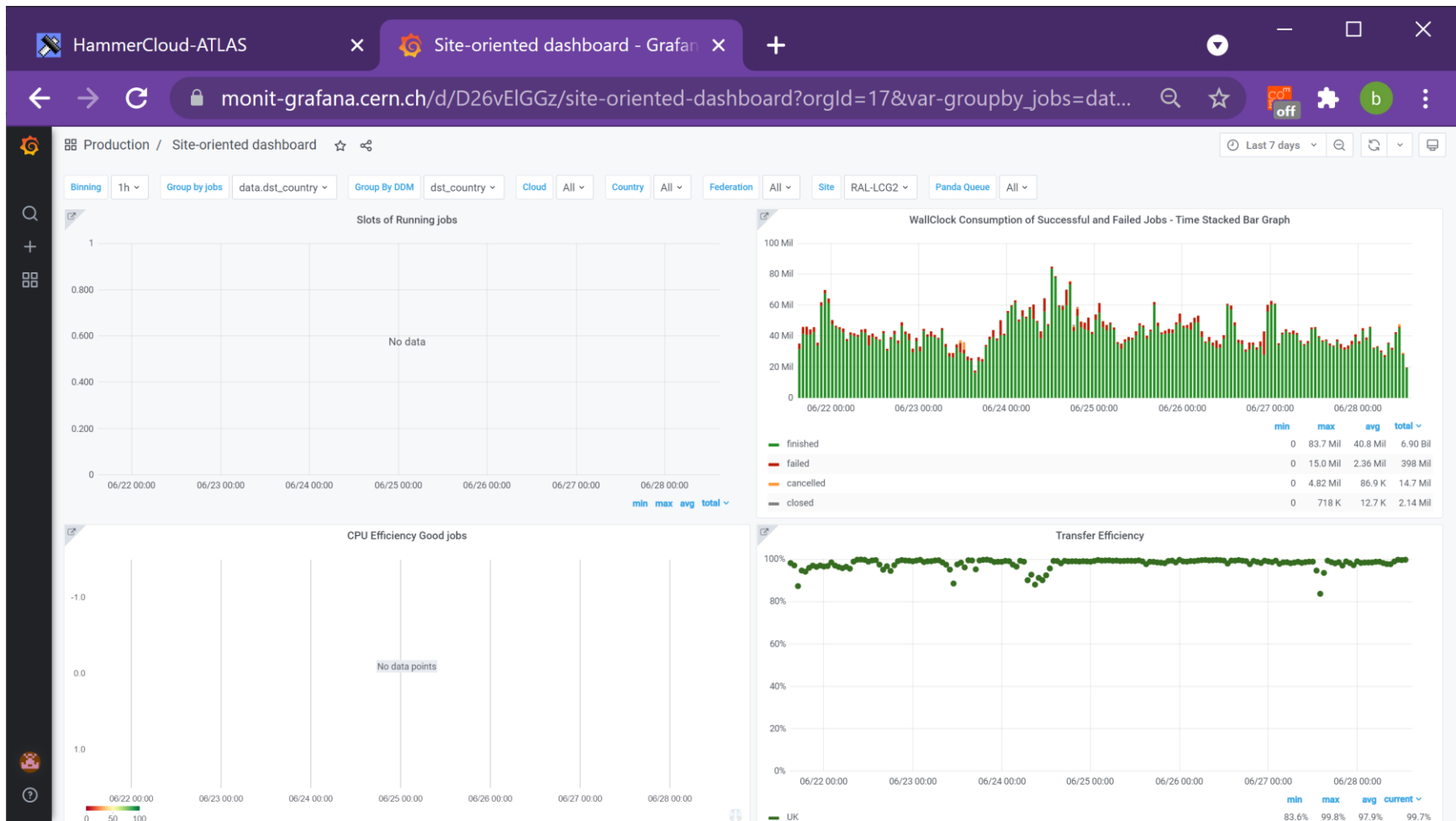
Error Report [+] Expand

Show entries Search:

Showing 1 to 1 of 1 entries Report problem

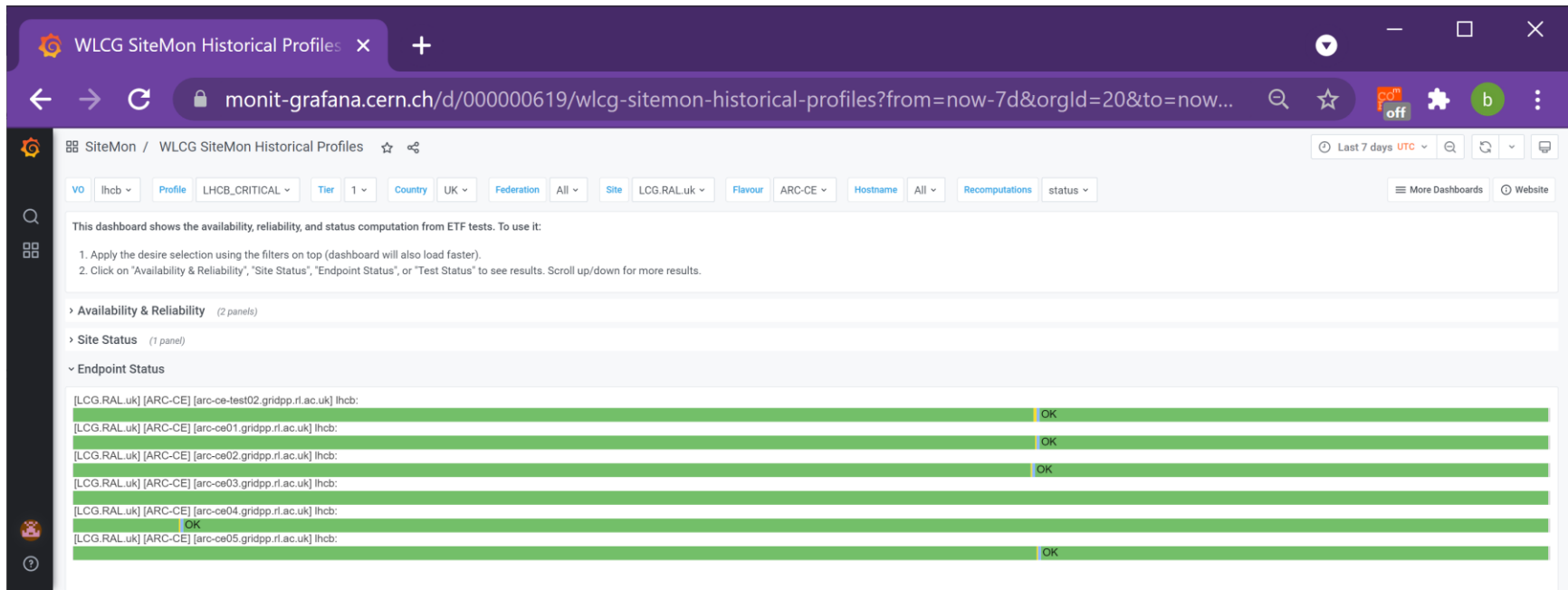
Site Dashboard:

https://monit-grafana.cern.ch/d/D26vElGGz/site-oriented-dashboard?orgId=17&var-groupby_jobs=data.dst_country&var-groupby_ddm=dst_country&var-cloud=All&var-country=All&var-federation=All&var-site=RAL-LCG2&var-computingsite=All



LHCB:

https://monit-grafana.cern.ch/d/000000619/wlwg-sitemon-historical-profiles?orgId=20&from=now-30d&to=now&var-vo=lhcb&var-profile=LHCB_CRITICAL&var-dst_tier=1&var-dst_country=UK&var-dst_federation=All&var-dst_experiment_site=LCG.RAL.uk&var-service_flavour=ARC-CE&var-dst_hostname=All&var-recomputation=status



Atlas Report

CMS Report

LHCb Report