



# Loval Oy

---





# Location in Finland

LOVAL OY locates in Loviisa Finland. Loviisa is town of 7,400 inhabitants on the Southern coast of Finland 80 km from Helsinki to east along highway to St. Peterburg.

Loviisa was founded in 1745, as a border fortress against Russia. Most of the fortifications have been preserved. It is named after Lovisa Ulrika, the Swedish Queen consort of Adolf Frederick of Sweden.



60°27'0"N 26°13'60"E





# Loval Oy

---

## Ownership

- 1960- 1977 Family company Laakso
  - 1977- 1982 Shipping company Hollming Oy
  - 1982- 1986 Oy Strömberg Ab/Kymi Strömberg Oy (ABB)
  - 1986- 1995 Operative management of Loval Oy (MBO)
  - 1995- Nibe industrier Ab
-

# NIBE

INDUSTRIER

309 MEUR

## Brand names

88 MEUR

156 MEUR

### NIBE Heating

### NIBE Stoves

### NIBE Element



# NIBE (element) – worldwide



## The Backer Group

Sweden	Backer BHV, Sösdala, Tjörnarps, div. Calesco Kolbäck
Norway	Norske Backer, Kongsvinger and Moss
Finland	Oy Meyer Vastus, Monninkylä
Denmark	Danotherm Electric, Rödovre
Poland	Backer OBR, Pyrzyce, Stargard and Warnice
Czech Rep.	Eltop Praha, Miretice and Backer CZ, Hlinsko
Italy	Backer FER, Sant Agostino and REBA Div, Milano
Spain	Backer FACSA, Aiguafreda
United Kingdom	Heatrod, Worsley
China	Shel, Shenzen
Mexico	Backer Alpe, Tlahuac
USA	Backer Heating Technologies Inc., Elgin

## The JEVI Group

Denmark	JEVI, Vejle
Holland	SINUS-JEVI, Medemblik

## SAN Electro Heat A/S

Denmark	SAN Electro Heat A/S, Graested Lübcke rail, Brøndby
---------	--

## Loval

Finland	Loval Oy, Lovisa
---------	------------------



# Loval Oy

---

Loval today

Key figures 2009:

- Turnover 17,6 Meur
- 210 employees
- Factory floor area 9000 m<sup>2</sup>
- 2 Million elements a year
- 22'000 BHE units / annum
- 76% of sales exported
- 50 export countries
- Long term customers in Germany, Switzerland, UK, Italy, Benelux and Sweden





# Customer segments

# Industry and traffic

---





# Vending machines (coffee)

## Professional kitchen appliances

---



# Professional Dishwashing machines

---



# Energy

---



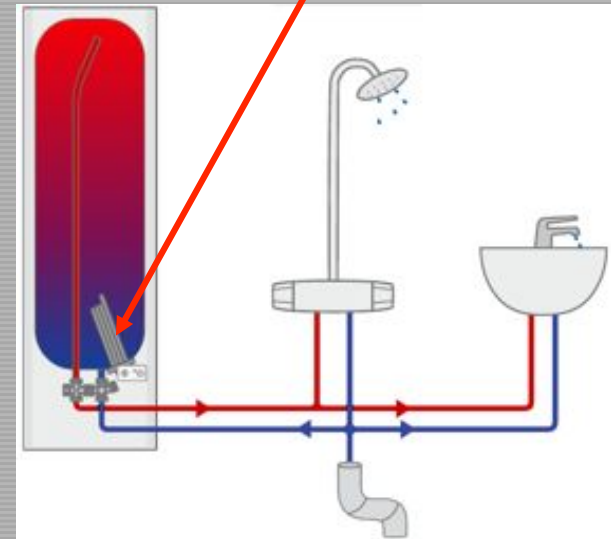
# Real estate heating

---

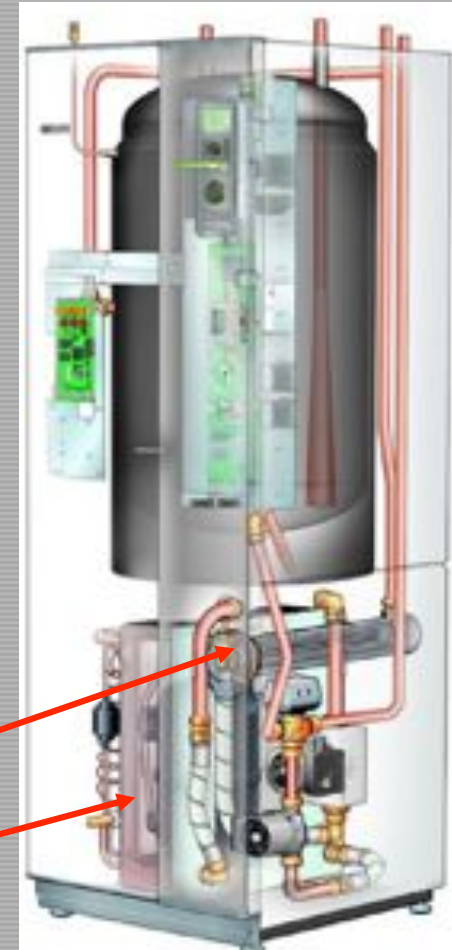
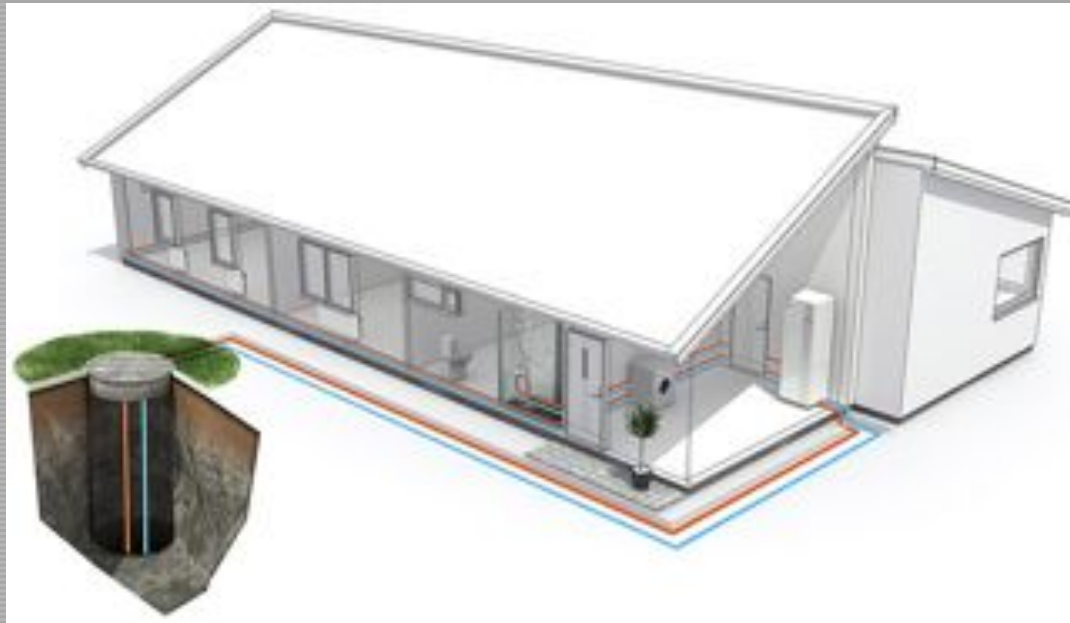
Convectors



Immersion heaters



# Heatpumps



Flow trough heaters

Brazed plate heat exchangers

# Leisure and households

---





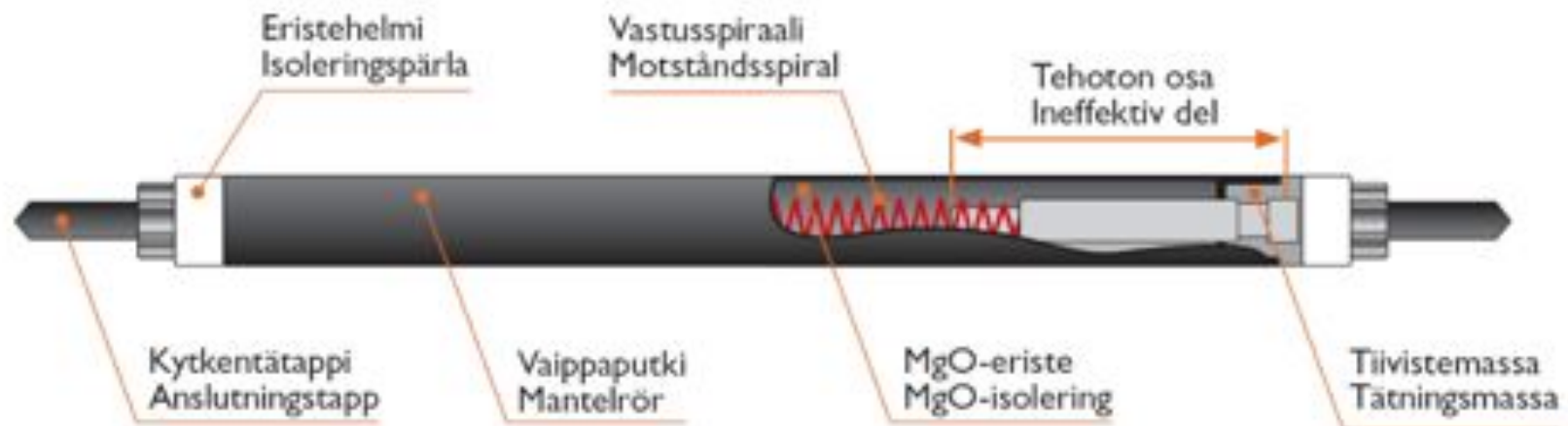
---

# Products



# Core product since 1960

## LOVAL-elementin rakenne LOVAL-elementets konstruktion







# System products

---

## Boilers

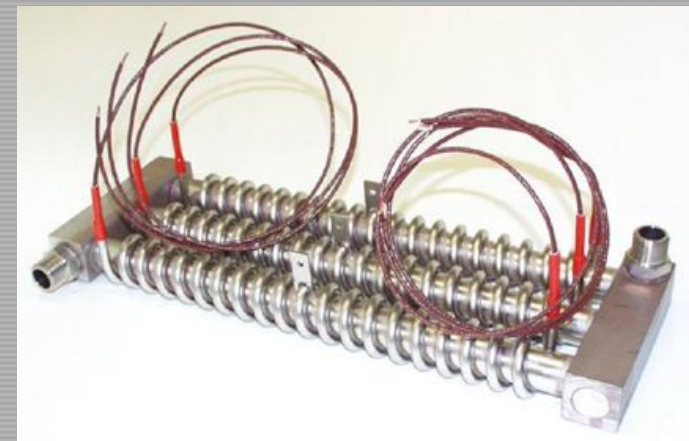




# System products

---

## Flow through heaters

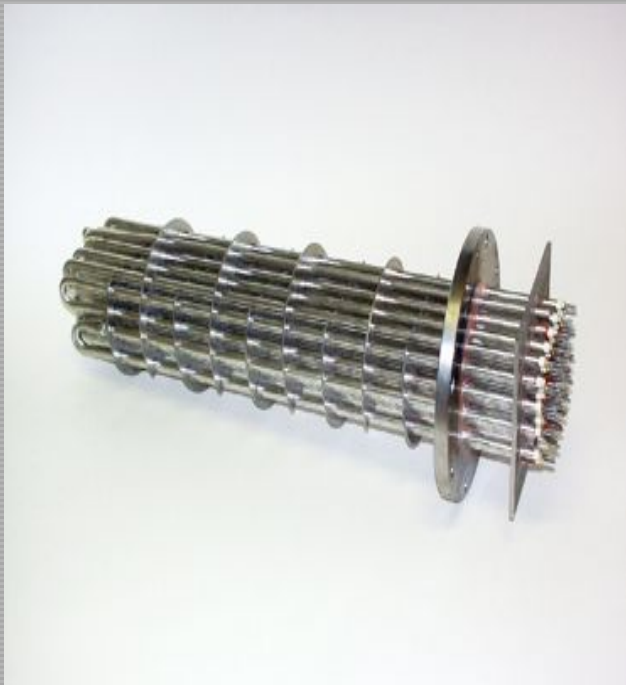




# System products

---

Constant temperature units



Immersion heaters





# System products

---

## Laboratory boilers



**Convactor heaters**





# Special products

---

Dishwasher heaters



Electric brake resistors





# Special products

---

Spaghetti cooker



Process industry





# Special products

---

Electric brake resistors

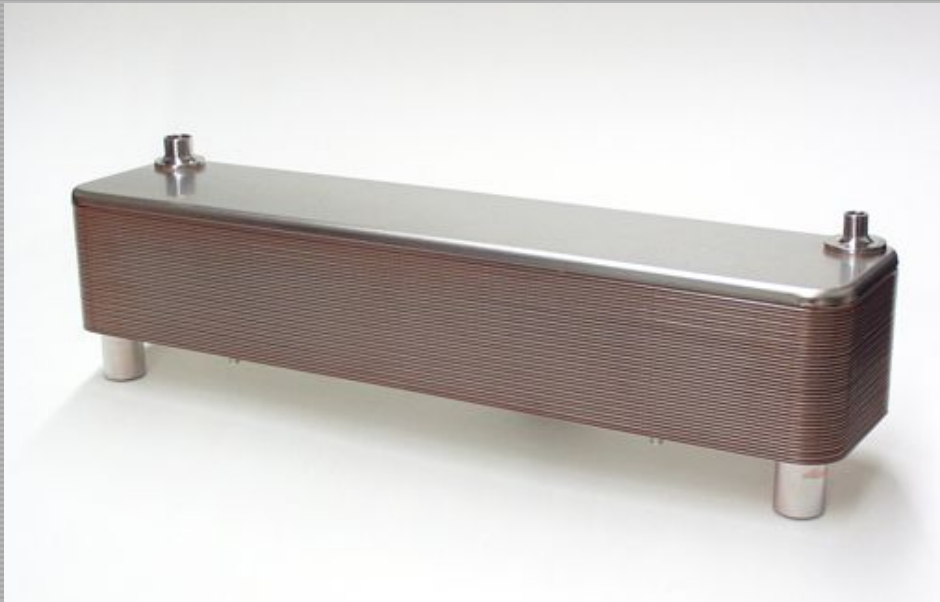




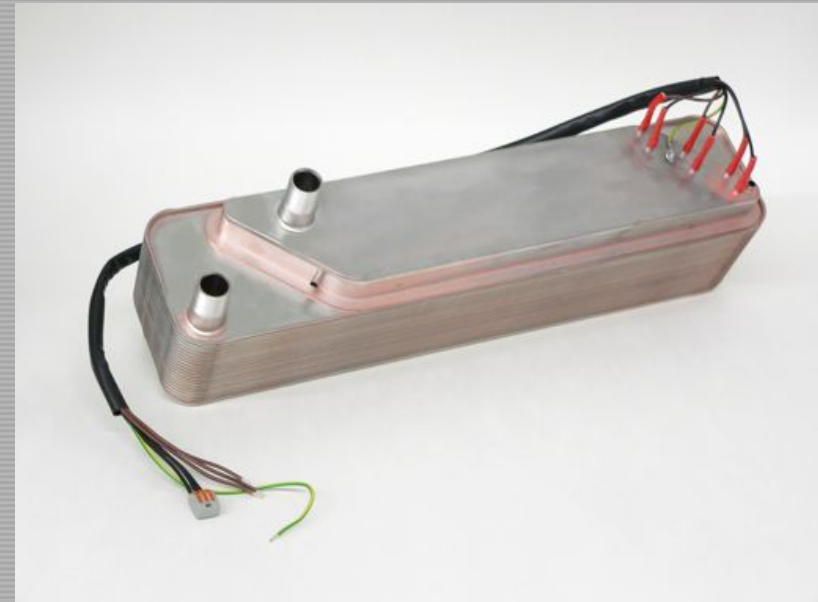
# Heat exchangers

---

Plate heat exchangers



Integrated BHE







Core process





# Vacuum brazing

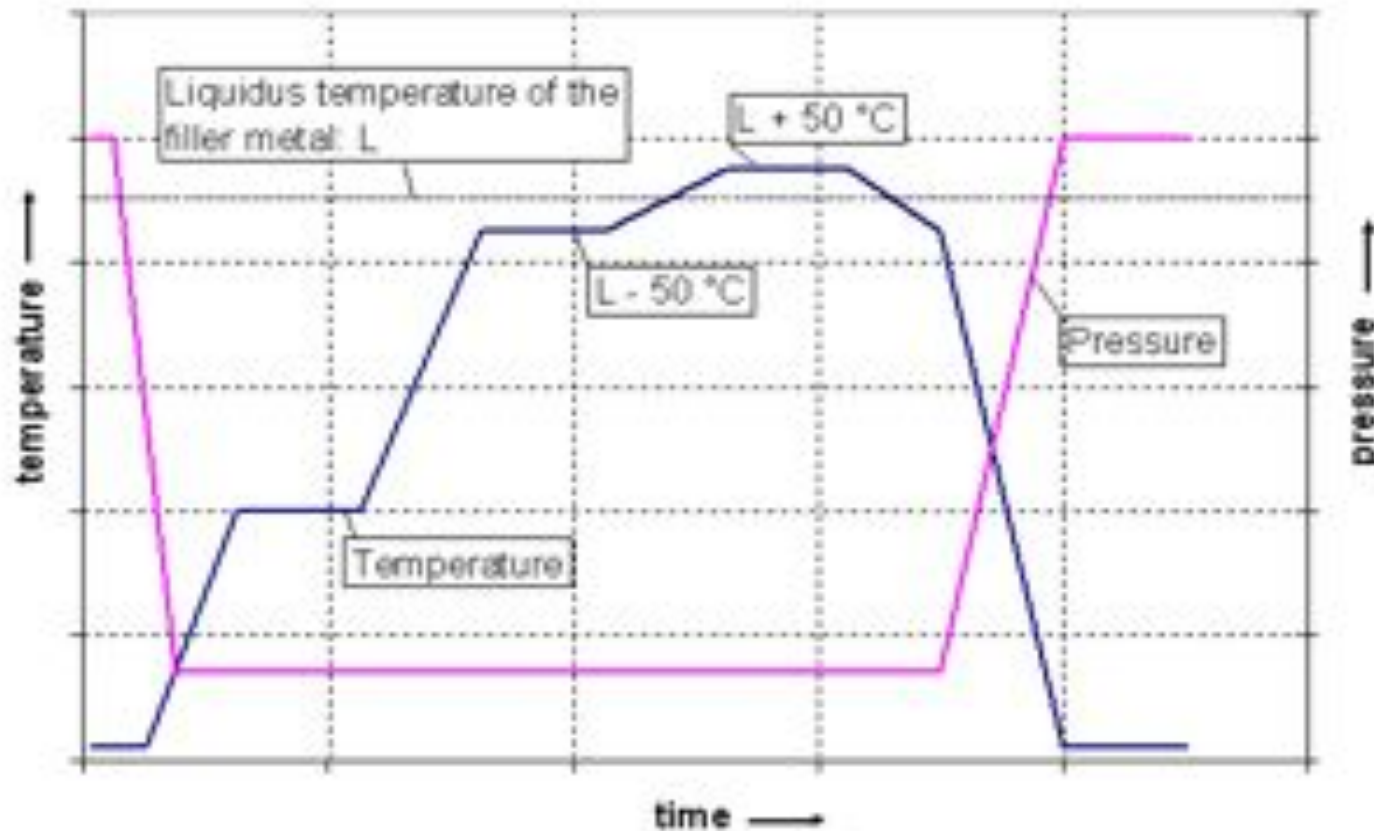
## Vacuum levels and normal range of application



Rough vacuum:	1000 – 1 mbar	C-steel	+ <u>BCu</u> -group filler metal 1120 °C
Medium vacuum:	1 – 10 <sup>-3</sup> mbar	stainless steel	+ <u>BAu</u> -group filler metal 1050-1200 °C + <u>BNi</u> -group filler metal
High vacuum:	10 <sup>-3</sup> – 10 <sup>-6</sup> mbar	special alloys	+ <u>BAu</u> -group filler metal 1050-1200 °C + <u>BNi</u> -group filler metal
		stainless steel	+ <u>BAg</u> -group filler metal 830 °C

# Brazing cycle in a vacuum furnace

## Brazing cycle in a vacuum furnace







# Thank You for Your attention

---

