

Next Steps

R.J. Allan
CCLRC Daresbury Laboratory



Policy for re-use



- This presentation is based on the one for NGS which can be re-used for academic purposes.
- However if you do so then please let training-support@nesc.ac.uk know. We need to gather statistics of re-use: no. of events, number of people trained. Thank you!!

Goal of Talk



- Thus far the emphasis has been on what the NGS and NW-GRID are, and how to use their core services.
- The goal of this talk is to ensure that intending users of the NW-GRID know
 - relevant support services and procedures
 - the steps to be taken to join the NW-GRID as users
 - what additional services we can offer in the future for larger projects

Overview



- What you can (need to) do next:
 1. Obtain a UK e-Science Certificate
THEN
 2. Apply for access to the NW-GRID
 - currently you join personally – not as a project
 - you join each site separately, some may have site-specific processes which you will be told about
 3. While your application is being processed
 - Determine your options for running Grid commands
 - Set up equivalent of `training-ui.nesc.ac.uk`?
 - Use `gssh` on windows?
- Get more training?!

How do I get a Certificate?



- You need a valid UK certificate before applying for a NW-GRID account:
 - <https://ca.grid-support.ac.uk>, the UK Certificate Authority.
 - You will probably need to provide non-electronic proof of identity to your local representative of the CA.
 - For example: a photocopy of your passport.
 - See <http://www.grid-support.ac.uk/archive/ca/ralist.htm>
 - Ensure that you use the same browser (on the same computer) that you sent the request from to download your certificate.
 - Always keep your certificate secure.
- Follow instructions on UK CA pages
 - and also refer to yesterday's 2nd talk and 1st practical.

Apply for access to the NW-GRID



- Via <http://www.nw-grid.ac.uk/?q=nwguser/regForm>
- You need a UK e-science certificate before you apply
- Simple web form
 - Specify cpu time, storage you want, etc.

Please note that our procedures will be changing soon.

 Upcoming events

- **Induction to Grid Computing and the North West Grid**
(3 days) (NWG_Workshop)


 Events Calendar

January 2007						
Mon	Tue	Wed	Thu	Fri	Sat	Sun
1	2	3	4	5	6	7
8	9	10	11	12	13	14
15	16	17	18	19	20	21
22	23	24	25	26	27	28
29	30	31				

 NW-GRID

- ▣ [About NW-GRID](#)
- ▣ [NW-GRID In Depth](#)
- ▣ [NW-GRID Partners](#)
- ▣ [Contact Us](#)
- ▣ [NW-GRID User Registration](#)

Home

NW-GRID User Registration

Note : Fields marked with * are required.

PERSONAL DETAILS

* Full Name: * Address: * Telephone: * Email Address: * Department: * Institution/Organisation: * NW-GRID User Id: (see the [guideline of the naming convention](#)) * Distinguished Name from UK e-Science certificate:

An example of a DN would be: /C=UK/O=eScience/OU=Manchester/L=MC/CN=sarfraz nadeem

^^ System Administrator's Name: ^^ System Administrator's Email: ^^ System Administrator's Department:

^^ Local System Administrator at your site.

* IP address(es) or DNS names of your computer(s) will be

* IP address(es) or DNS names of your computer(s) will be connecting from (see the guideline):

RESOURCE REQUESTED

* Use resources at site(s): Daresbury Lancaster Liverpool Manchester
(Select at least one site)

* CPU Hours Required (per year):

* File Space Required (GB):

* Type of Registration: (see the guideline)

* Project:
(Please provide the Project Name if you select [Not in the list])

* Project PI Name :

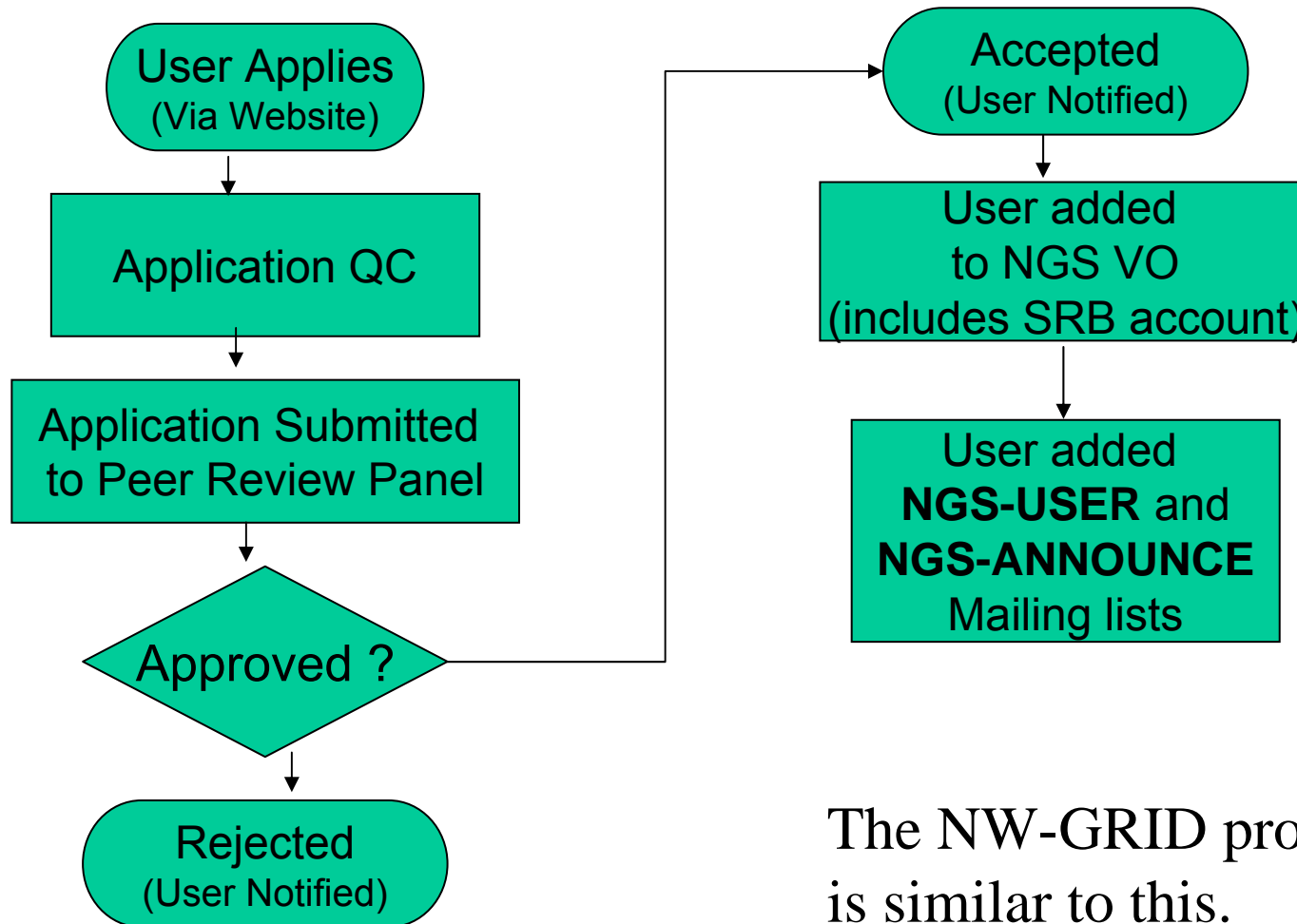
* Project PI Email :

* Scientific case and planned usage of the selected project:

P/S: Problem registering for this user account please contact Sarfraz Nadeem or Ann Lee



NGS User Registration Process



The NW-GRID process is similar to this.

Access to Data Services



- With your NGS account, you get
 - SRB account
 - can apply for an Oracle account
- With your NW-GRID account, you get
 - SRB account (possibly in future)
 - Panasas home file store

Projects and VOs



- Project-based applications being dealt with case-by-case
- Want to host your data on NGS?
 - consider GridFTP, SRB, Oracle, or OGSA-DAI
 - NGS maintains infrastructure
 - you populate and manage data
- Want to run a “science testbed” on NW-GRID?
 - once installed and tested we can set aside time, typically up to a week, when a VO can run its applications across all 4 NW-GRID core clusters
 - next slides
- Want to use NGS resources to provision services, portals for a community of users?
 - next slides

Science Testbeds on NW-GRID



So far, we have had testbeds using the following applications:

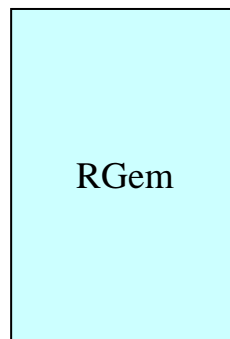
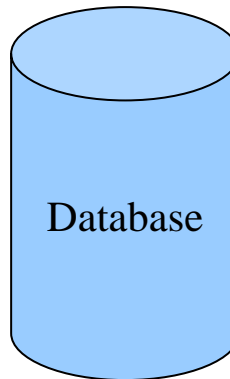
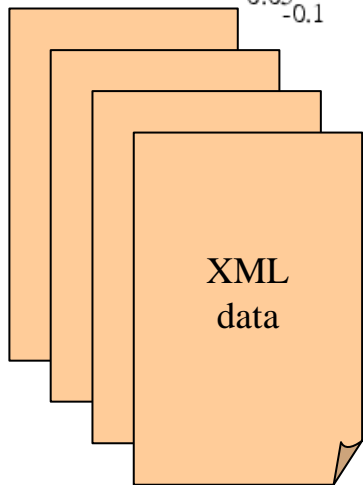
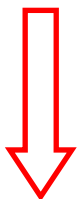
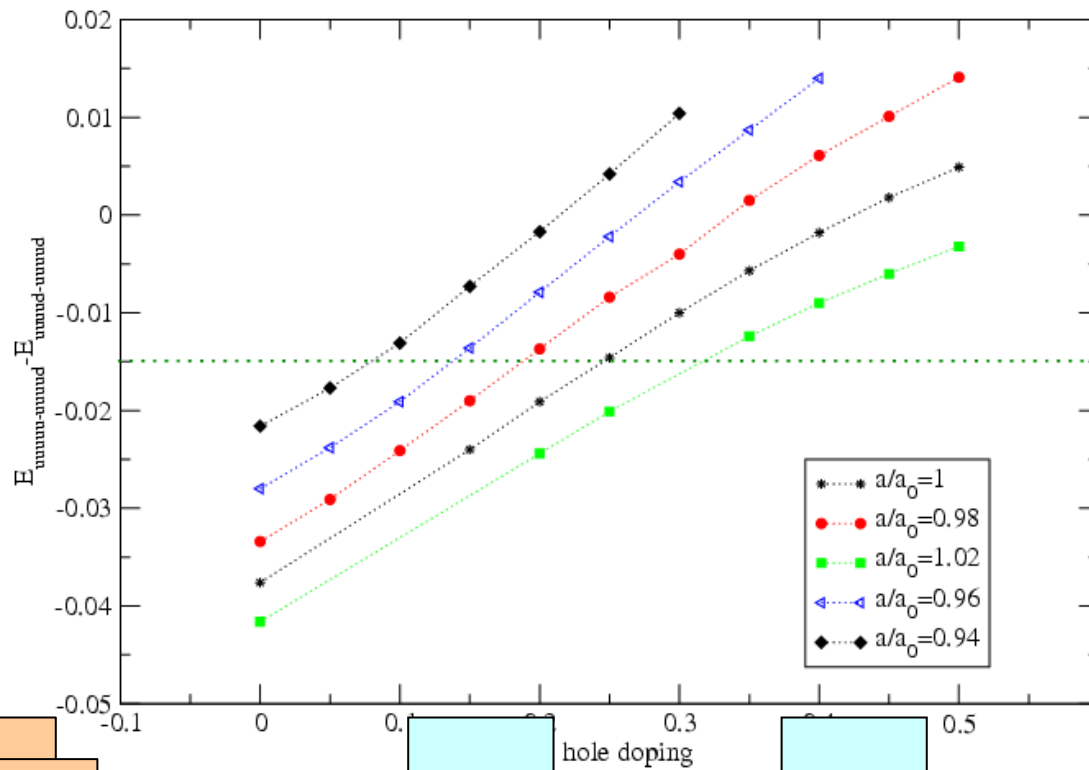
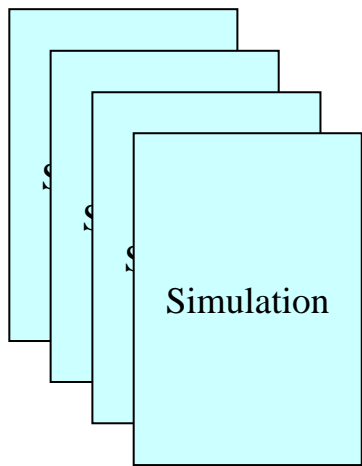
- SMEAGOL – condensed matter group at Lancaster
- DL_SIC – condensed matter group at Daresbury
- DL_POLY and Siesta – e-Minerals group at Daresbury/
Cambridge
- GAMESS – chemists at Daresbury/ Liverpool
- k-Nearest Neighbour – social science nodes at Lancaster/
Bristol
- Exonerate and InterPro Scan – bio-informatics groups in
Manchester
- Schroedinger – Chimatica Ltd.

These testbeds are leading to some interesting results, both science outputs and improving the service and middleware provided.

CCP9 Testbed



CaCuO₂



Additional Services for a VO



- NGS resources can be used to provide a portal (or portlets) or other service for your community
- Deployment and security scenarios are negotiable
- NGS policies (core nodes):
 - your portal can present its own, or a delegated user's credential to NGS, but tasks should be traceable to initiating end-user
 - you should not run your own services in user space without prior agreement of NGS and hosting site
 - we need to know that services are secure, will not jeopardise operation of other NGS services, or consume too much precious resource on head nodes
- A Portal and similar arrangements will be provided for NW-GRID soon
- Talk to NGS and NW-GRID staff about your requirements

Resource providers



Resource providers join the NGS by

- Defining level of service commitments
- Adopting NGS acceptable use and security policies
- Run compatible middleware
 - as defined by NGS Minimum Software Stack
 - and verified by compliance test suite
- Support monitoring and accounting

Two levels of membership

1. Affiliates run compatible stack, integrated support
2. Partners also contribute “significant resources”

Help and More Training?



- Watch <http://www.nesc.ac.uk/training/events>
- Also <http://www.nesc.ac.uk/esi/esi.html>

- Digital Library: <http://egee.lib.ed.ac.uk/>
- ReDRESS: <http://redress.lancs.ac.uk> – contains a lot more training resources and AV recordings of previous workshops we've run.
- Request Tracker: nw-grid-daresbury@request.dl.ac.uk

- **TELL US WHAT YOU WANT !!!!**
 - in future versions of this course
 - in application developer courses
 -
 - Email: training-support@nesc.ac.uk