

Connecting to training-ui

Guy Warner

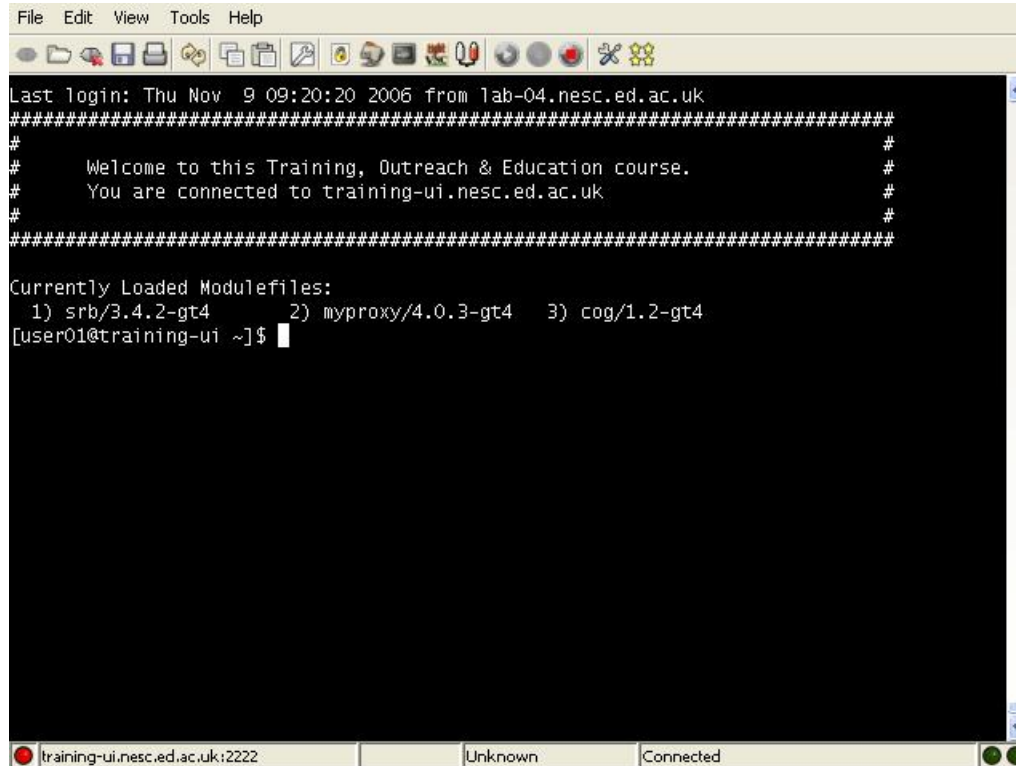
Training, Outreach and Education Team



Pre-requisite Software and Configuration



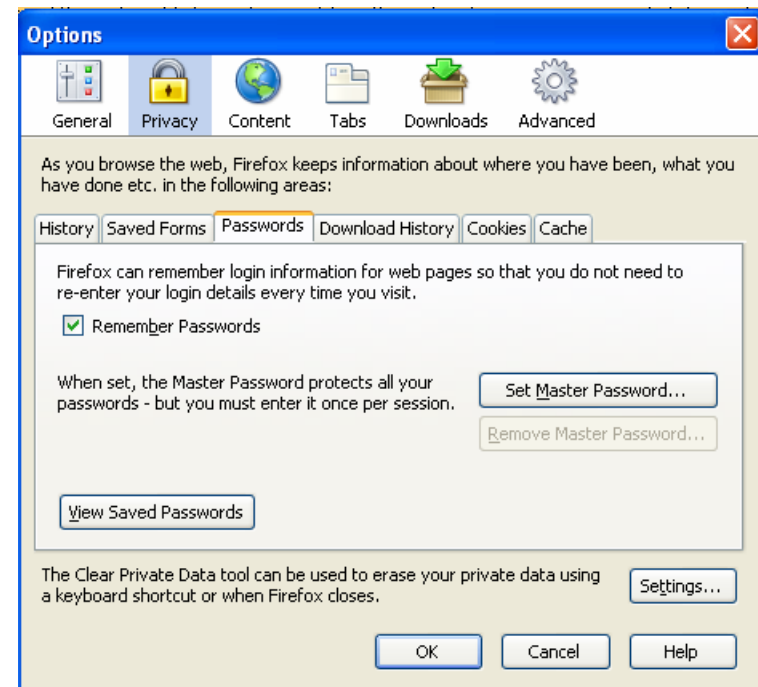
	Win32	Linux	Apple Mac
Web Browser	Firefox (best) IE	Firefox	Firefox (Safari is not supported)
Java	Sun Java SDK 1.5 or above	Sun Java SDK 1.5 or above (gnu java is not supported)	Sun Java SDK 1.5 or above
Xwindows	Exceed cygwin startx	Automatic (when using GUI desktop)	X11 optional component required
Firewall / Security	Outbound ports 80, 443 and 2222 direct to training-ui.nesc.ed.ac.uk (no proxies)		



```
File Edit View Tools Help
#####
Last login: Thu Nov  9 09:20:20 2006 from lab-04.nesc.ed.ac.uk
#####
#
#   Welcome to this Training, Outreach & Education course.   #
#   You are connected to training-ui.nesc.ed.ac.uk             #
#
#####
Currently Loaded Modulefiles:
 1) srb/3.4.2-gt4      2) myproxy/4.0.3-gt4  3) cog/1.2-gt4
[user01@training-ui ~]$
```

- Java ssh tool modified by NGS to include GSI authentication
- Now a sourceforge project
- Run as an applet or standalone

- You will need to have set a master password in Firefox.
 - This will protect your certificate
 - Java tool for connecting to training-ui expects master password.
- To set a master password
 - Tools (or Edit for Linux) then Options
 - Privacy then Passwords tab
 - Click “Set Master Password”



Apple Macs and X11



- Additional package for X11 support required
- If difficulties encountered with Java gsissh and X11 forwards:
 - Run java gsissh standalone from an Xterm
 - Xterm supports X11 forwarding but Terminal does not.
- Please note the use of Apple Mac's is not supported.

The Training Certificate Authority



- A fully functional certificate authority for issuing low-assurance certificates
- Low-assurance allows:
 - Certificates issued to local organiser and not the attendee.
 - Attendees do not need to sign UK Terms and conditions of use.
 - Identity checks on attendees are not needed.
- No need for the attendee to do anything pre-event.
- All certificate Distinguished Names (DN's) are known pre-event.
- DN's are of the form
“/C=UK//O=Grid/O=Training/CU=NeSC/CN=UserXX” where
XX is a two digit number

Certificate Manager (1)

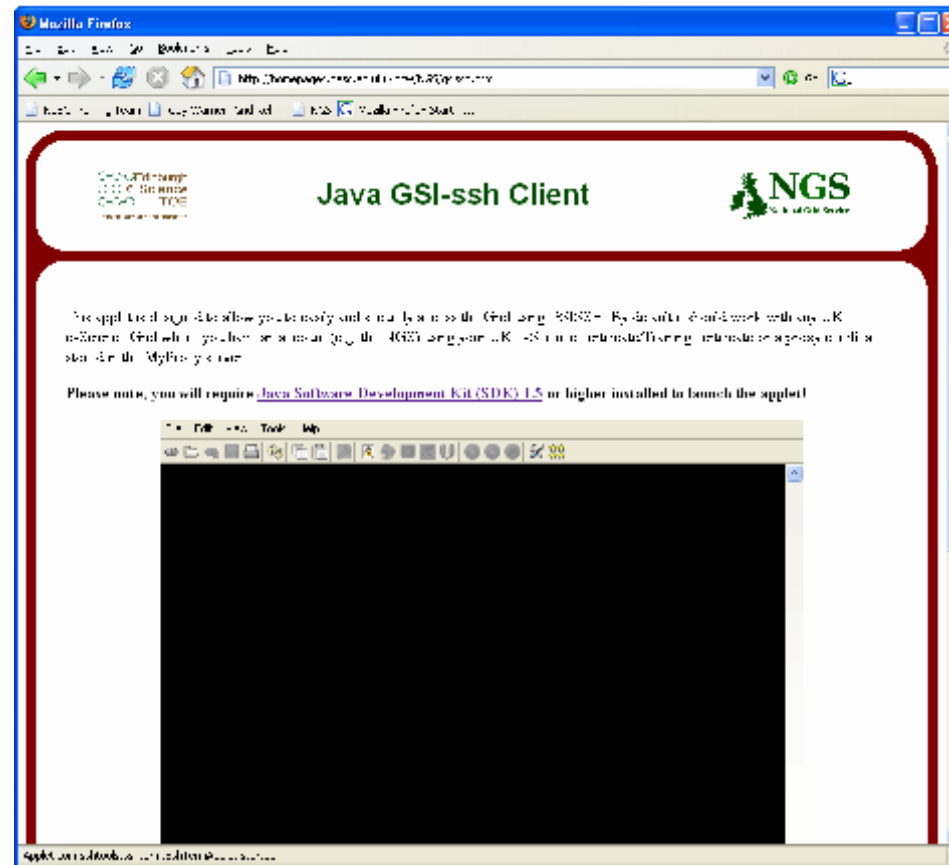


<https://training-ui.nesc.ed.ac.uk>

- This tool is designed to be similar to method used by UK CA to distribute certificates
- Distributes your individual/group training certificate
- Click “Download” and then:
 - Firefox: save the file to disk
 - IE: open (and import) the file
- Tool maps your certificate to your IP Address
- Beware; Daresbury DHCP server will allocate you a new IP Address when you reboot/hibernate/... . This will break this mapping
 - Don't use this tool a second time.

- Tools (Edit for Linux) then Options
- Advanced then Encryption tab
- View Certificates
- Import
- Select the certificate you previously saved
- Passphrase is “aspdaf”

Connecting to training-ui (1)



<http://homepages.nesc.ac.uk/~gcw/NGS/gsissh.html>

Connecting to training-ui (2)

In java gsissh:

- File then New Connection
- Connect to “training-ui.nesc.ed.ac.uk”

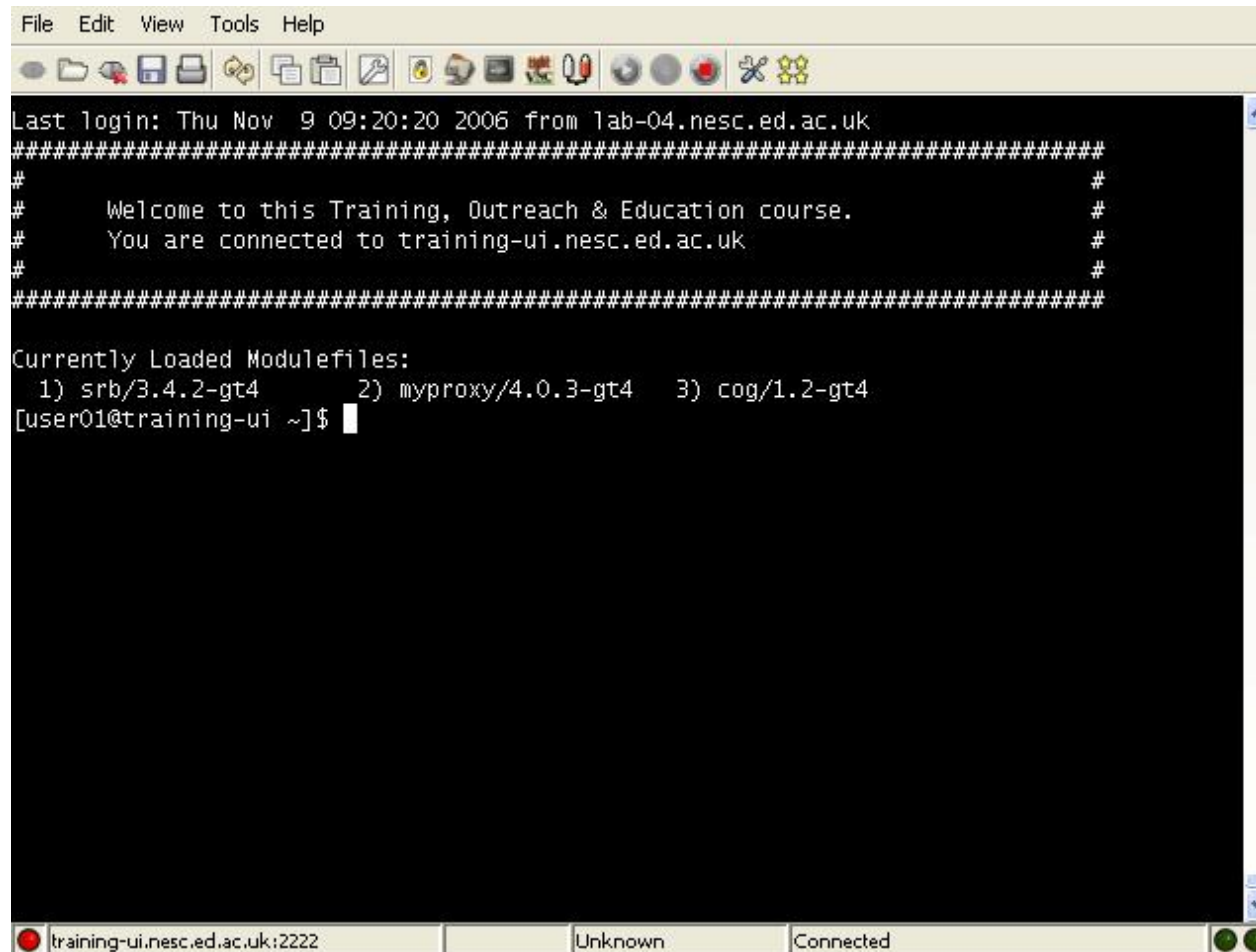


(If not using supported browser)

Firefox: when prompted for passphrase use your master password



Connecting to training-ui (3)



```
File Edit View Tools Help
#####
#
# Welcome to this Training, Outreach & Education course.
# You are connected to training-ui.nesc.ed.ac.uk
#
#####

Currently Loaded Modulefiles:
 1) srb/3.4.2-gt4      2) myproxy/4.0.3-gt4  3) cog/1.2-gt4
[user01@training-ui ~]$
```

Summary



- Satisfy Pre-requisite software/configuration
- Obtain certificate from <https://training-ui.nesc.ed.ac.uk>
- Use java gsissh tool at <http://homepages.nesc.ac.uk/~gcw/NGS/gsissh.html>
- Connect to training-ui.nesc.ed.ac.uk
- Certificate passphrase is “aspdaf”