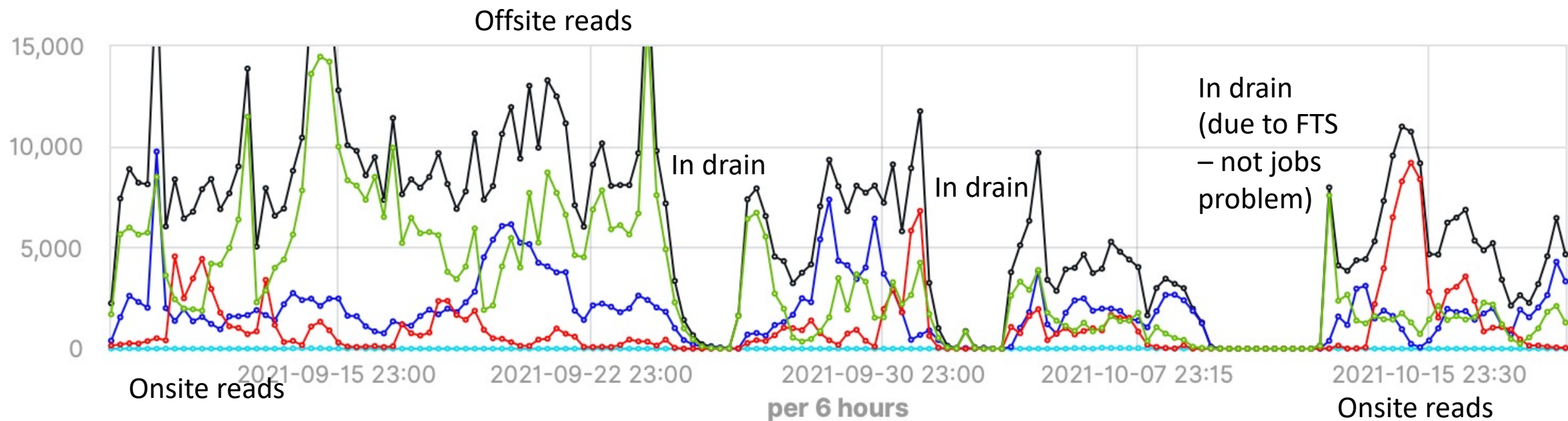


CMS job performance during the last few weeks at RAL

Katy Ellis, 20/09/21, Liaison meeting

CORE count (completed jobs)

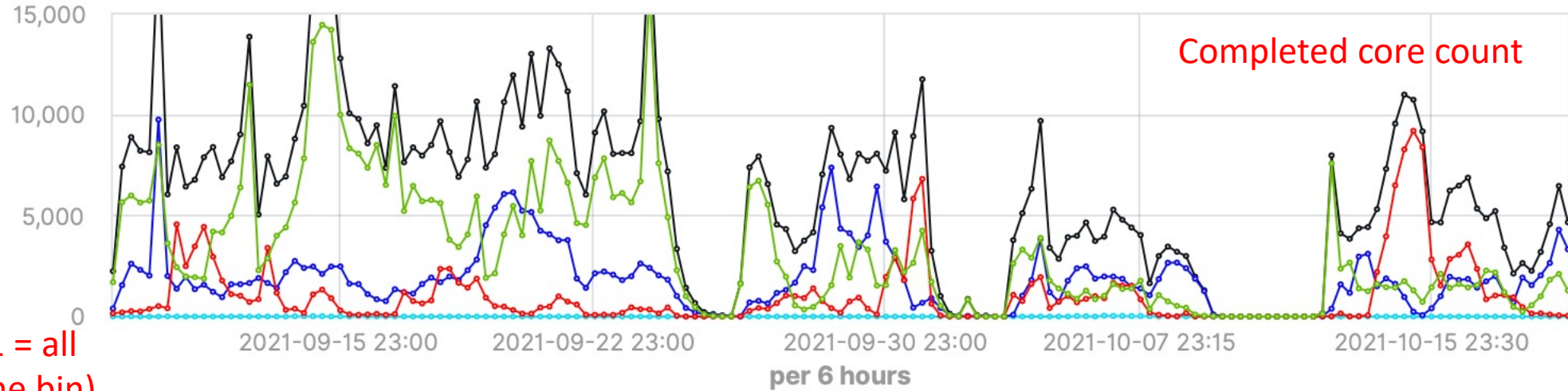
Cap of 8k cores applied 20th Sept.



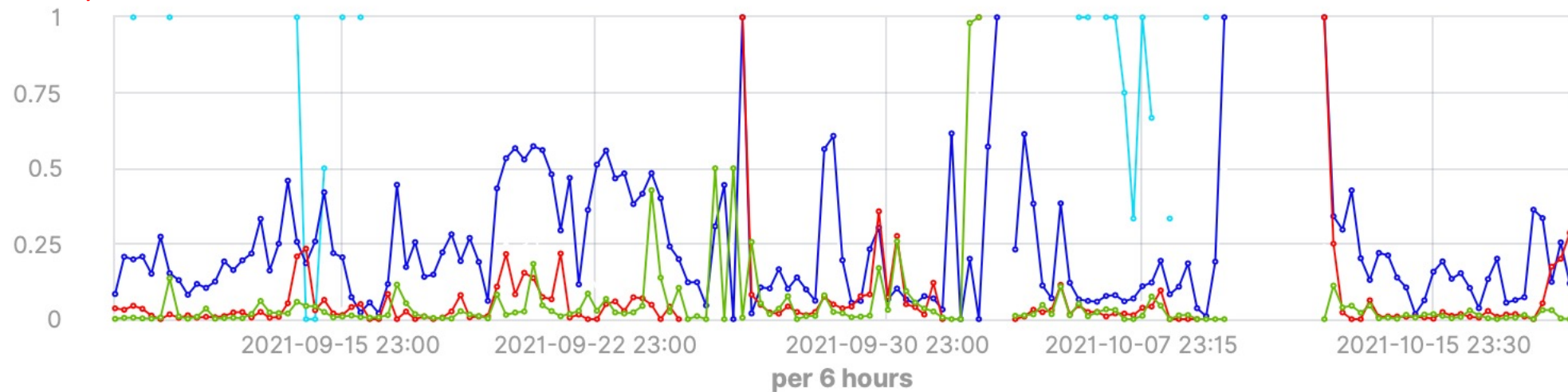
✓ ● No secondary 1,299 ● Onsite 100% 44 ● Offsite Europe 3,340 ● Offsite Not Europe 0 ● All 4,683

data.Status:Completed AND data.Site:T1_UK_RAL AND (NOT data.CMS_JobType:Analysis) AND (NOT data.CMS_JobType:Merge) AND (NOT data.CMS_JobType:LogCollect) AND (NOT data.CMS_JobType:Cleanup) 4

Job failures

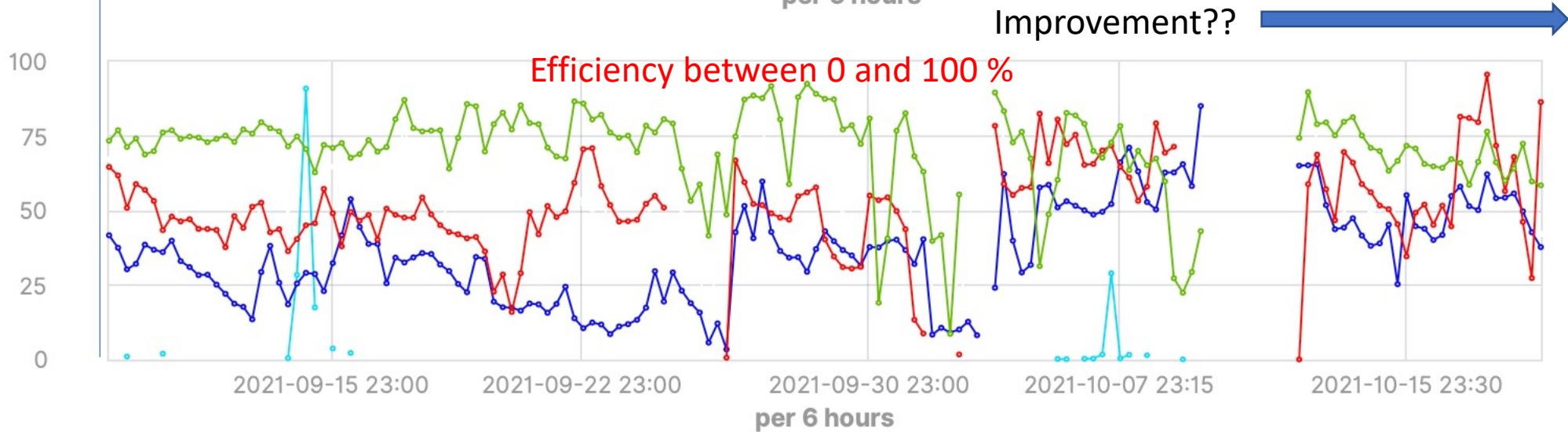
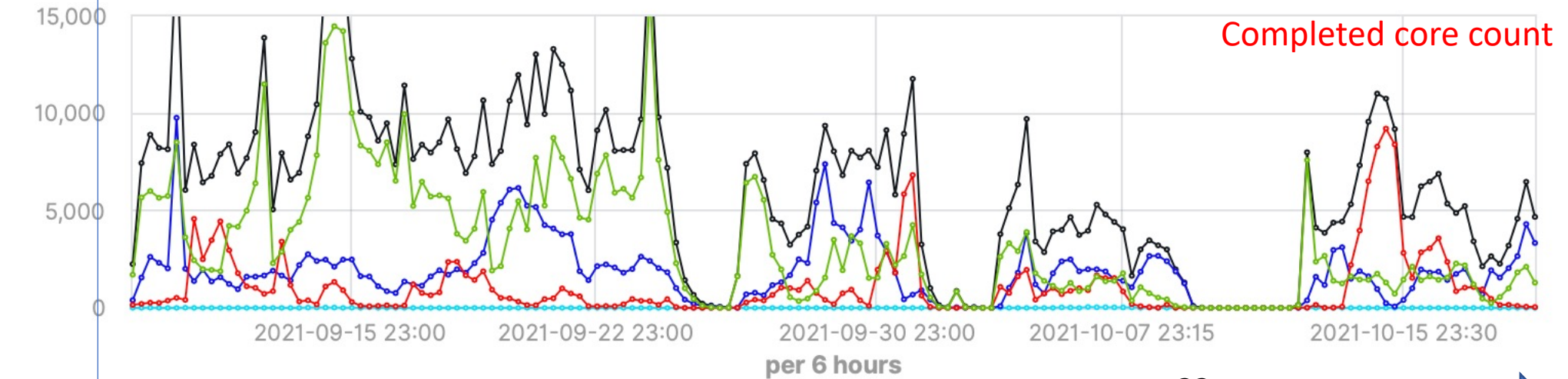


Failure rate (1 = all fail in that time bin)



✓ ● No secondary 0 ● Onsite 100% 0.286 ● Offsite Europe 0.118 ● Offsite Not Europe 0 All 0.076

Job efficiency (including failures)



● No secondary **58.49**
 ● Onsite 100% **86.471**
 ● Offsite Europe **37.75**
 ● Offsite Not Europe **0**
 All **42.21**