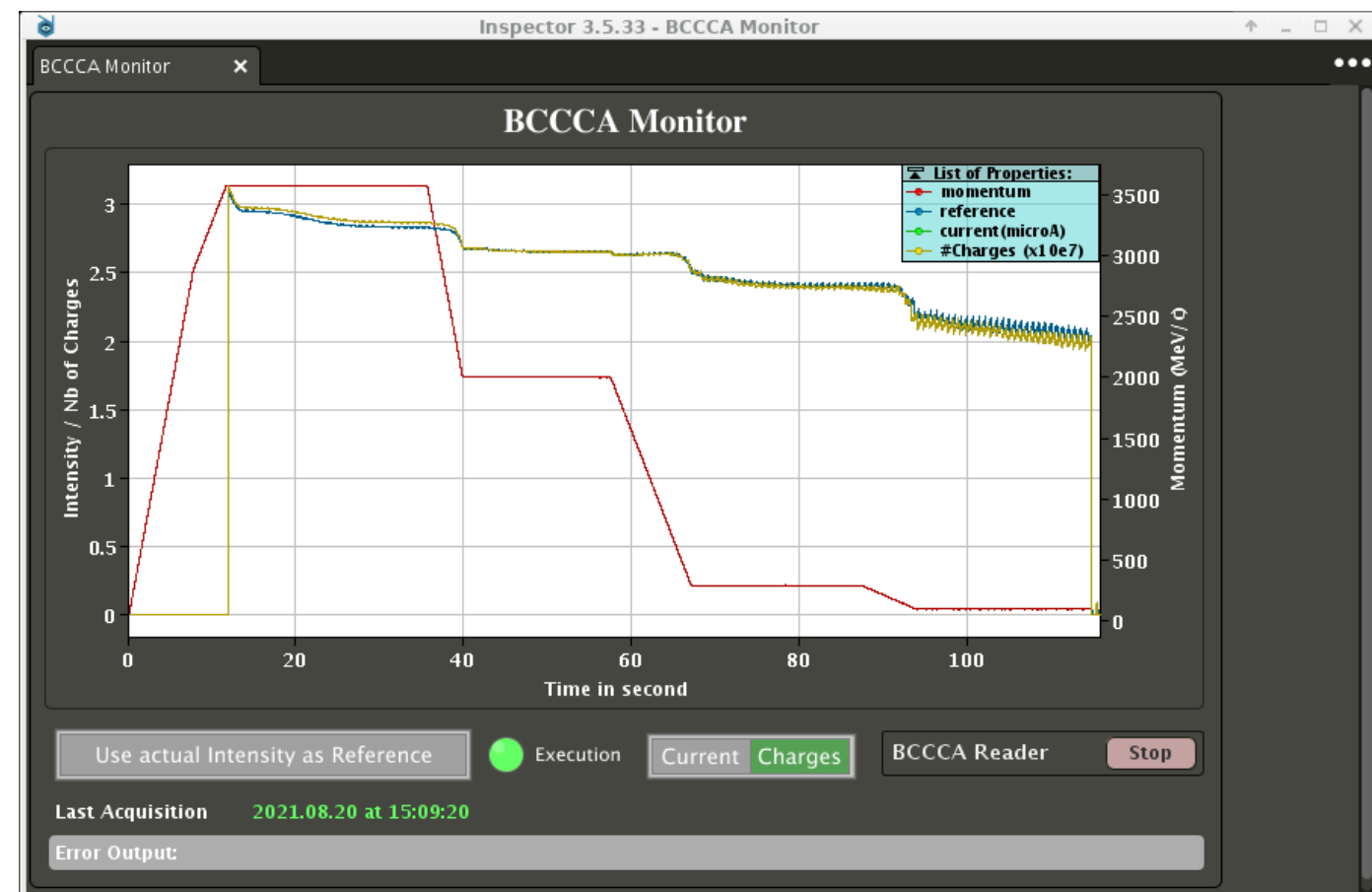
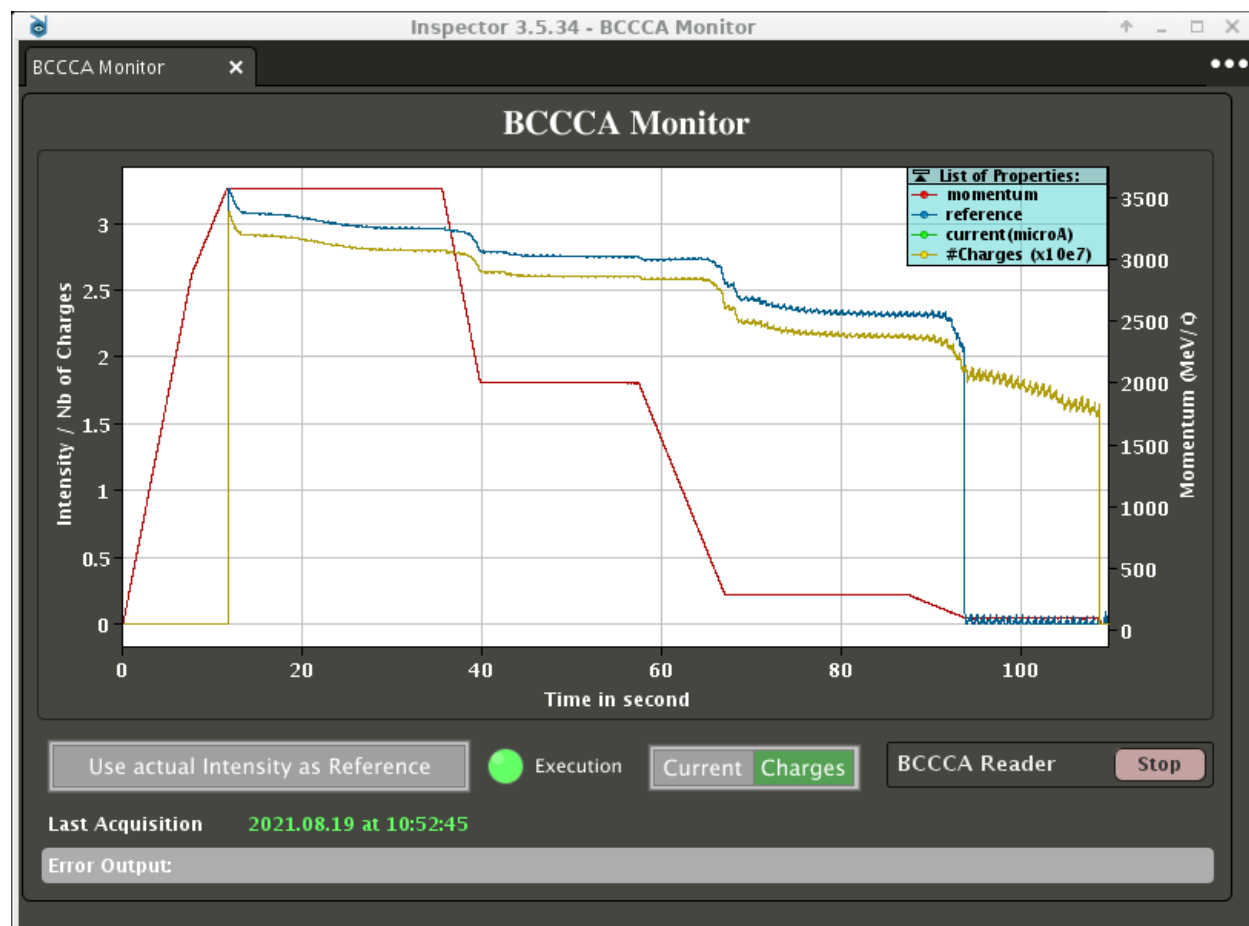
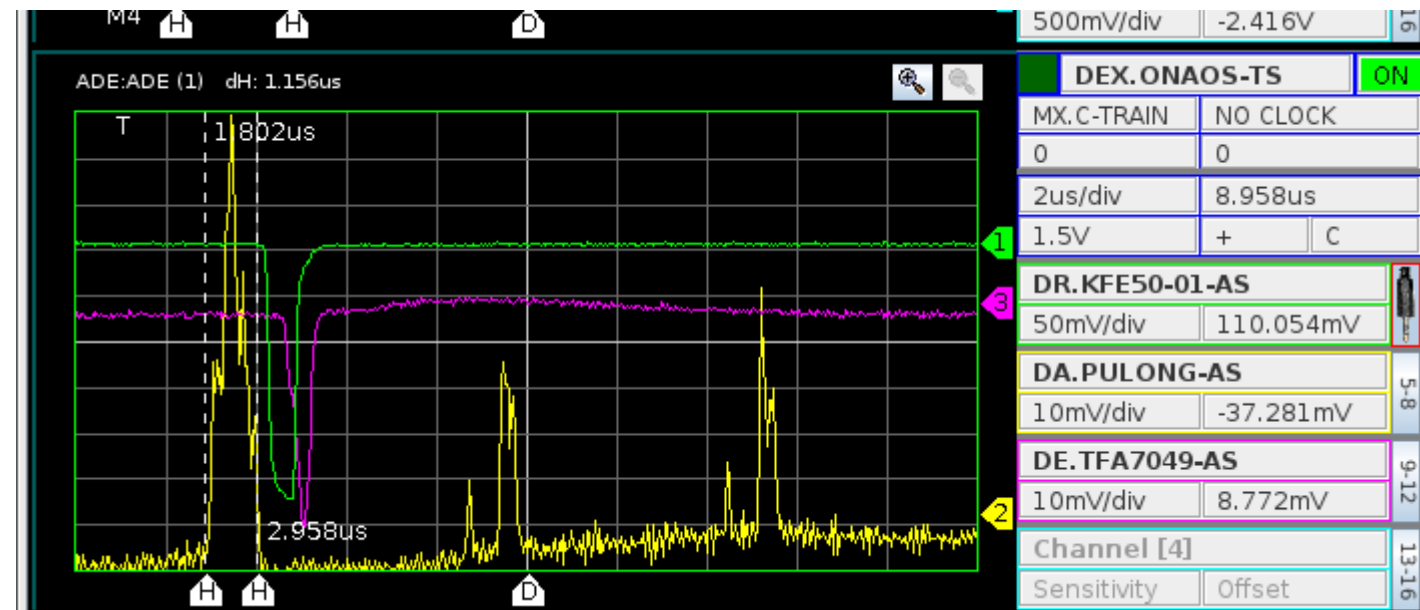
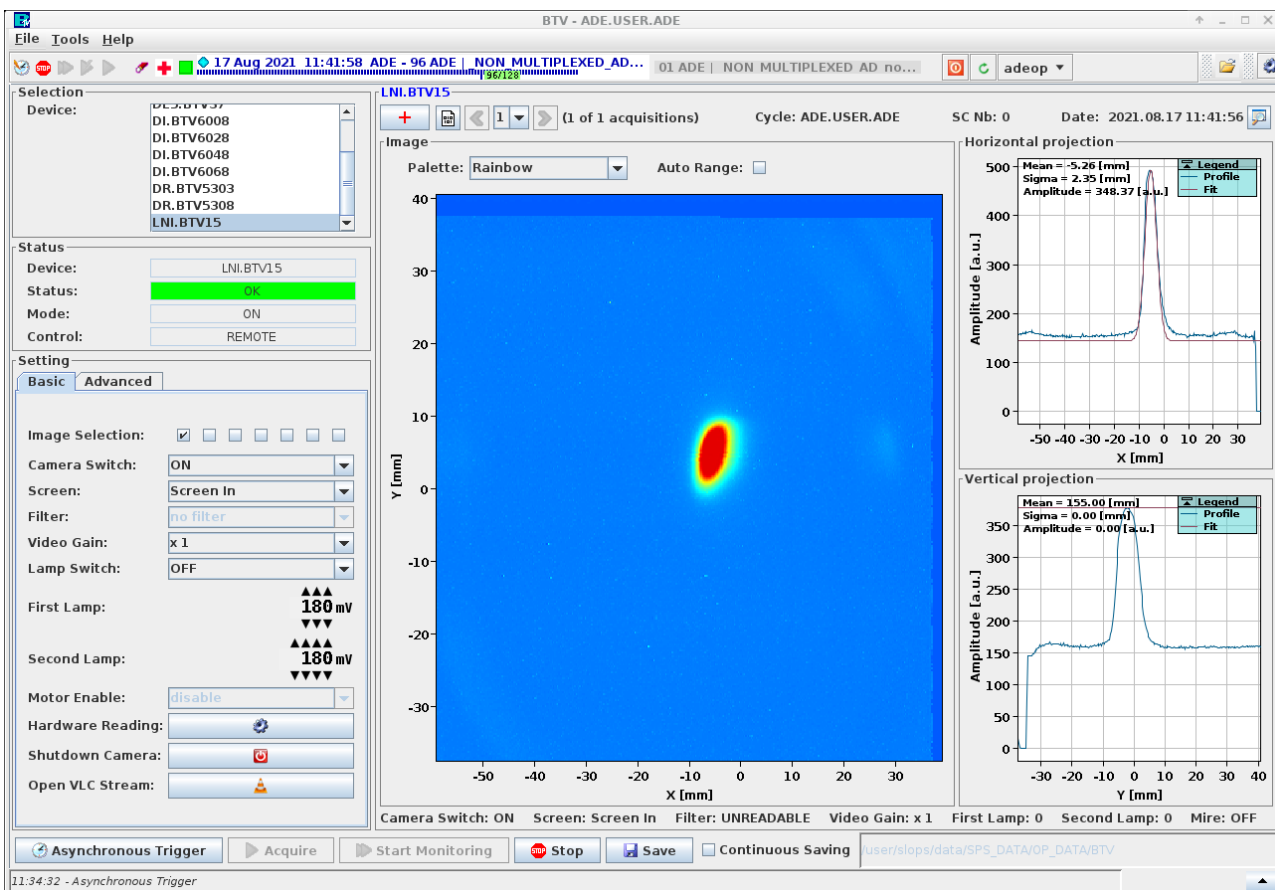


AD-ELENA restart

- Injected intensity $3e7$, $2e7$ extracted:
 - Have to take time to optimize injection and deceleration efficiency
 - Fine tuning of stochastic cooling and electron cooling
- Stochastic Cooling operational at 3.5 GeV/c and 2 GeV/c
- E-cooling set-up at 300 MeV/c and on-going at 100 MeV/c
- LLRF basic settings up:
 - Bunch rotation, capture, deceleration
 - Ejection synchro set-up without beam, to be fine tuned with beam
- Beam loss at 105 MeV due to HW limit on the power supply of the main quadrupoles



- Beam arriving at the door of ELENA:
 - Image on last (working) BTV in the line
 - Signal on BCT 7049 (pink)
- Setting-up the profile monitors in LNI and adjusting injection timing



- Priority is to bring pbars to the ELENA transfer line:
 - Setting-up of AD extraction
 - Setting-up injection in ELENA

- Continue optimization of the cycle:
 - AD injection on Thursday morning
 - Optimization of AD cycle in parallel of ELENA deceleration setting-up (if enough resources)
 - Fine tuning/optimization postponed as long as performances allows next step

- Beam at the end of the transfer line of ELENA on 23rd of August:
 - But maybe not for physics?