

# HMPID – Data taking procedure

Pedestals calculation – Pedestals Uploading

# Calibration Run

- Setup for Zero Suppression OFF data acquisition
- Run Standalone 1000 – 2000 events, Trigger Rate 500 Hz. With local raw data files (Gbytes)
- Local raw data files analysis and Pedestals/Thresholds calculation
- Pedestals/Thresholds data storing for the next Physics Data Tacking

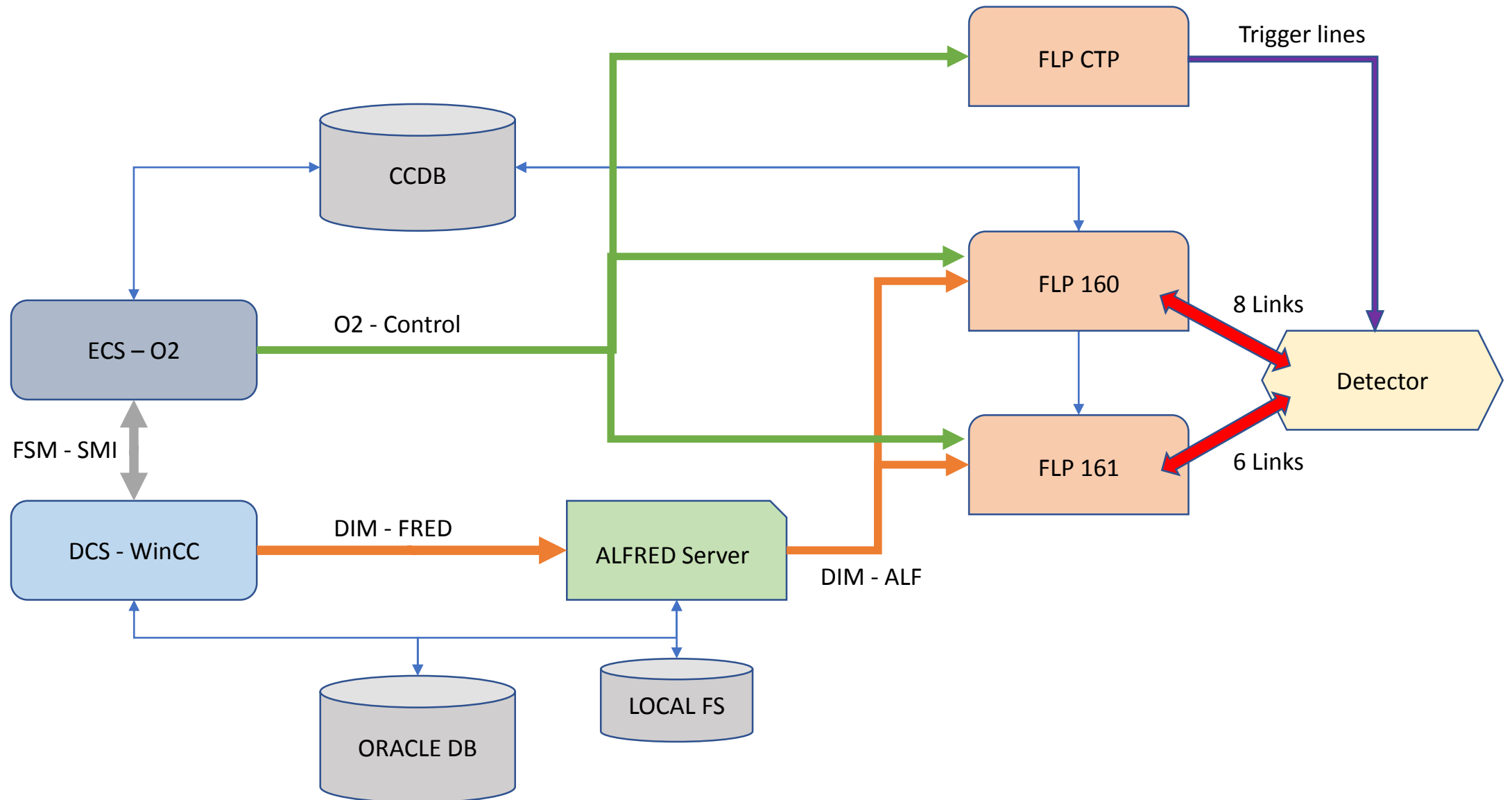
Ped./Thr. data amount :

$$14 \text{ (equipments)} \times 24 \text{ (columns)} \times 480 \text{ (pads)} \times 3 \text{ (bytes)} = 472.5 \text{ Kbytes}$$

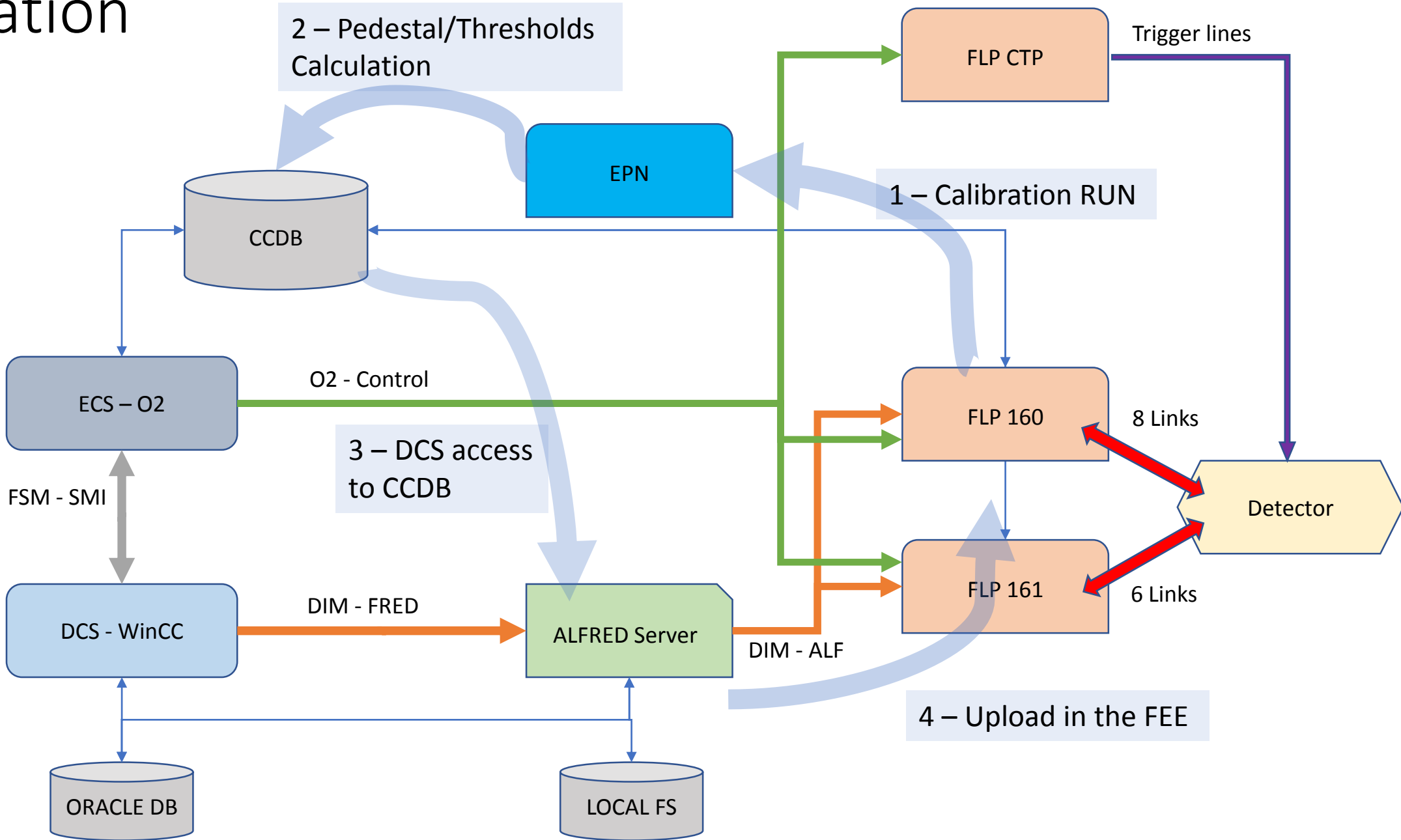
# Physic Run

- Download of Pedestals/Thresholds related info, from Files or DB
- Setup Run parameters
- Load Pedestals/Thresholds values into the FEE
- Setup for Data Acquisition

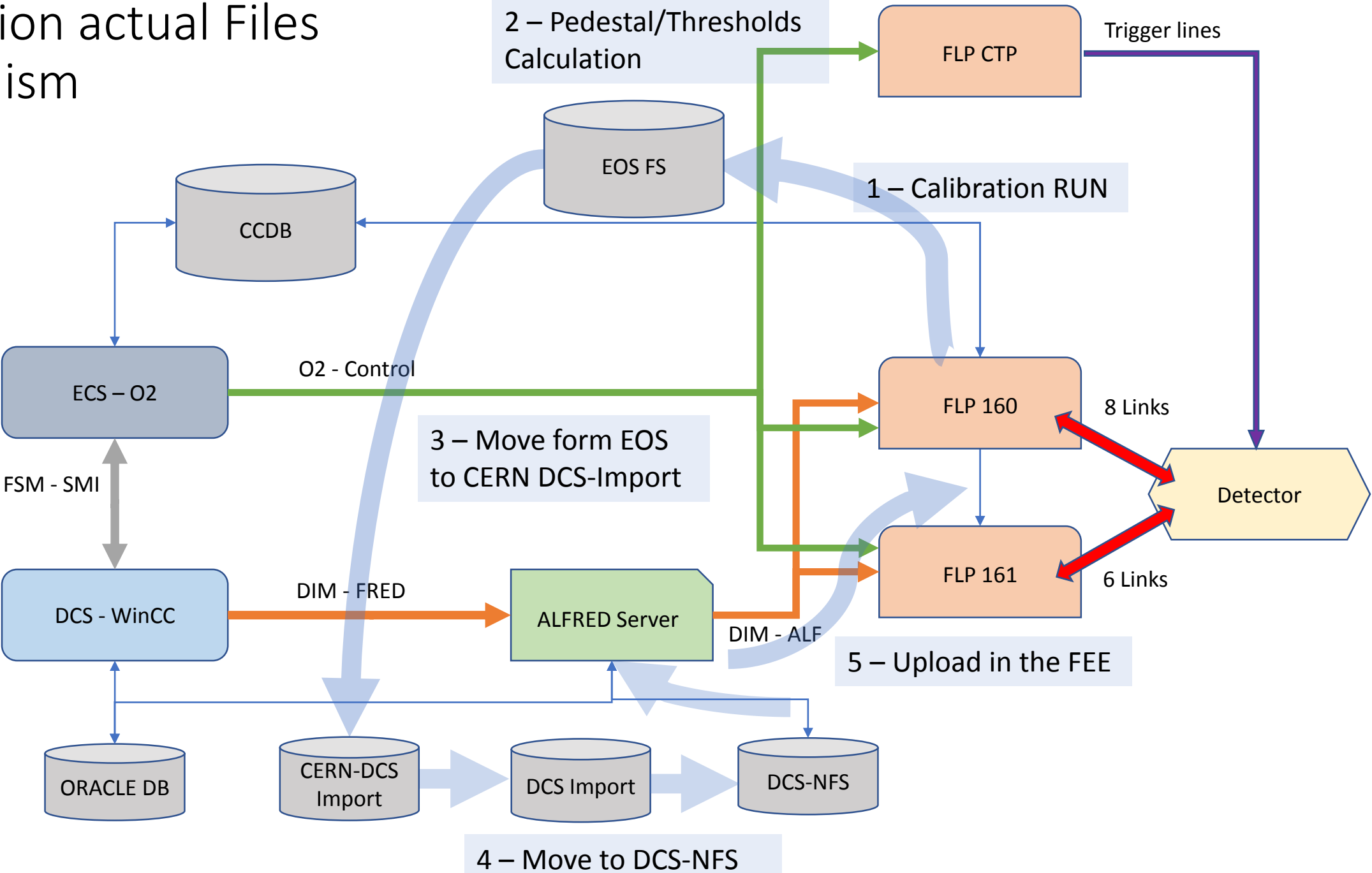
# Architecture



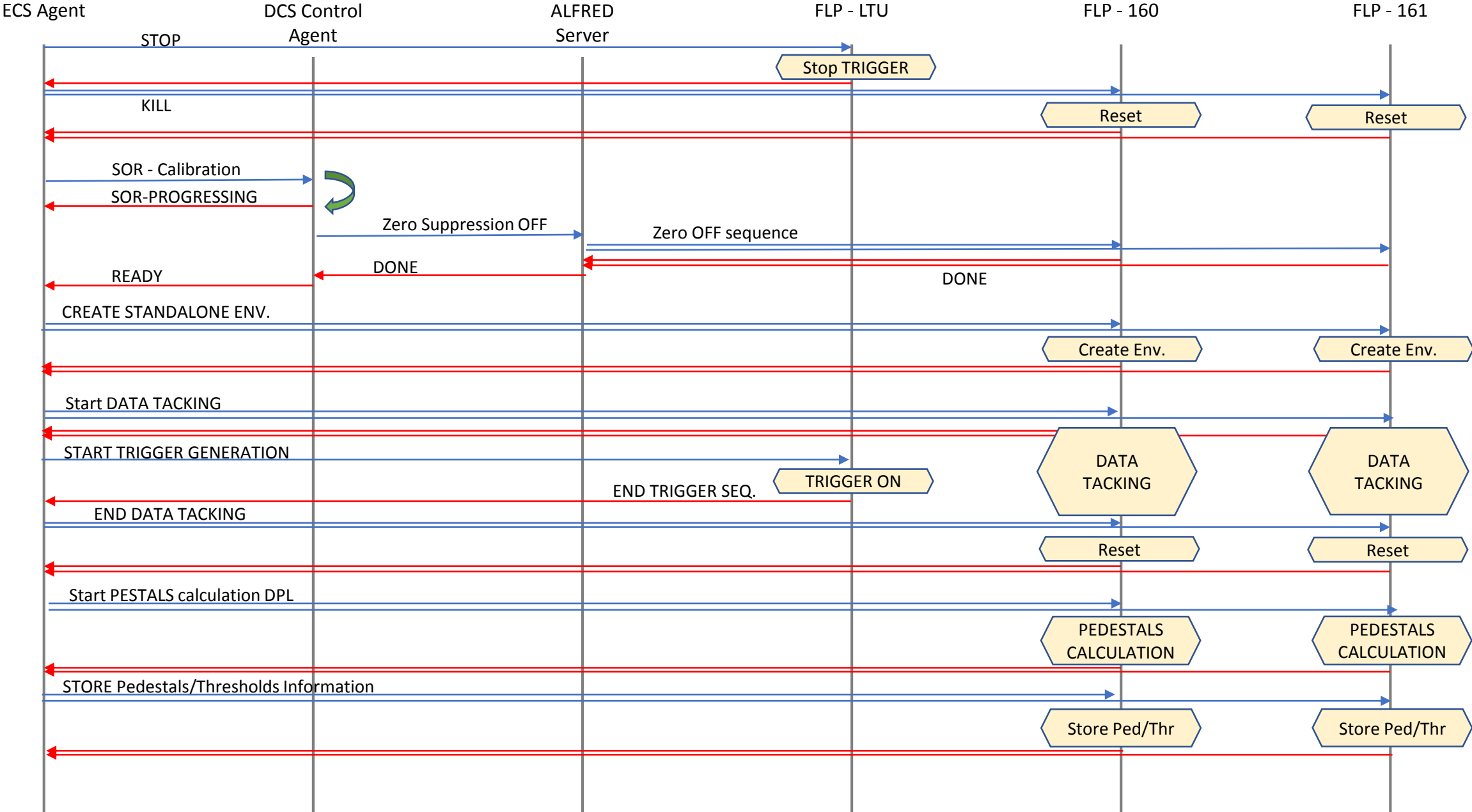
# Calibration



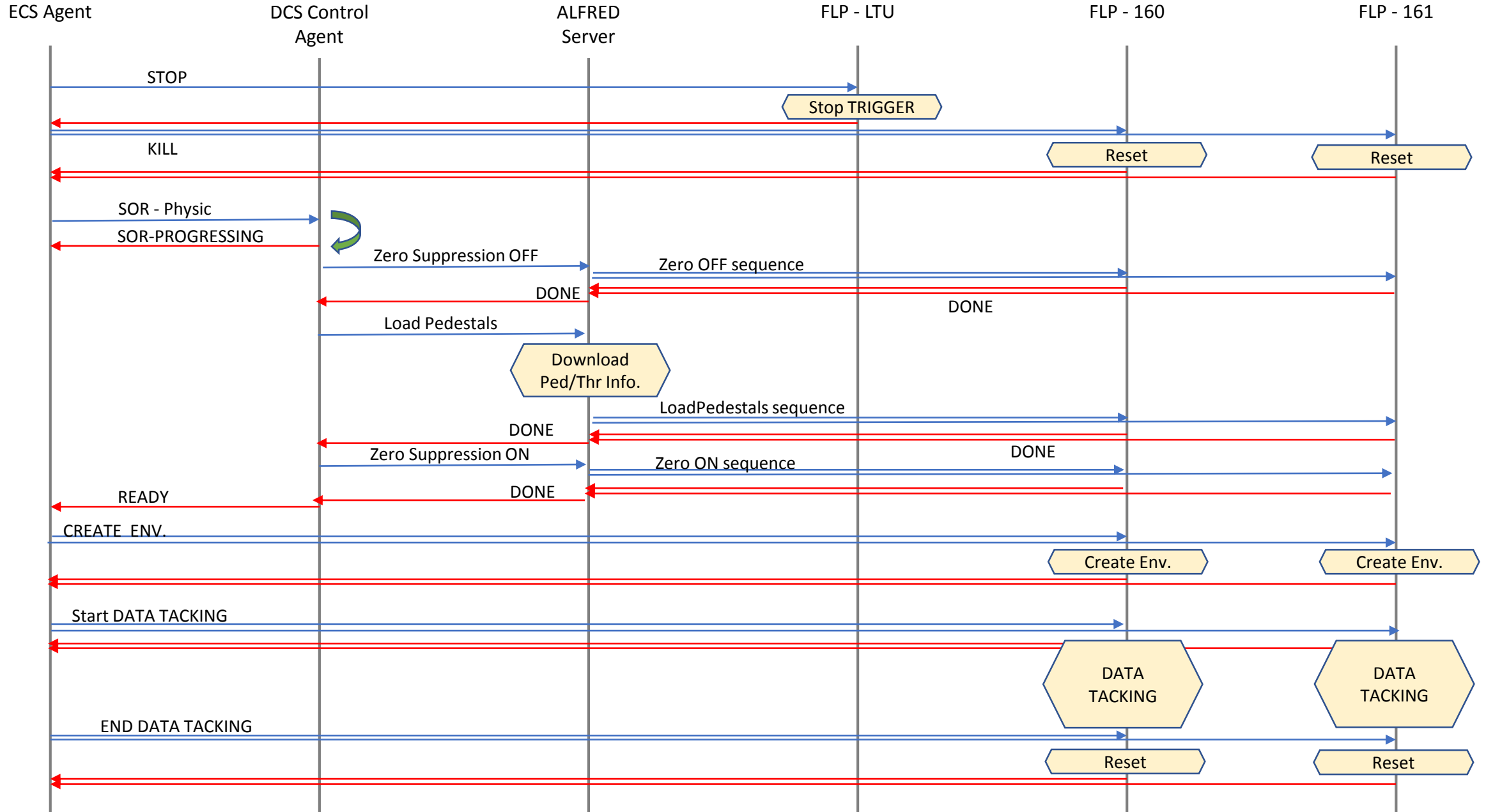
# Calibration actual Files mechanism



# Calibration run



# Physic run





# Issues

- Are the Raw Data files produced in standalone run located on the FLPs file system ?
- The workflows for the Pedestals/Thresholds calculation will be run on FLPs ?
- The Ped./Thr. values obtained will be stored in Files or CCDB ?
- ALFRED server will download Ped./Thr. values from Files or ORACLE DB ?