

COMPANY PROFILE



# SERVICES



CONSULTANCY



DESIGN



DEVELOPMENT

SOLUTIONS FOR TEST,  
MEASUREMENT AND  
CONTROL.

# OUR TEAM

- 1 CLA (CERTIFIED LABVIEW ARCHITECT)
- 2 CPI (CERTIFIED PROFESSIONAL INSTRUCTOR)
- 2 CLD (CERTIFIED LABVIEW DEVELOPER)
- 1 FULL STACK DEVELOPER (PYTHON /JS/ HTML/ CSS)

# OUR HISTORY

**2013**

BEGINNING

Nicola Bavarone LabVIEW Freelancer

**2015**

NI PARTNER

LabVIEW Consultant

**2019**

Founded the new BYTELABS srls

1 CLA 1 CPI

**2020**

3 LabVIEW developer (CLA, CPI, CLD)

1 Full Stack Developer

1 Administration

**2021**

3 LabVIEW developer (CLA, CPI, CLD)

1 Full Stack Developer

1 Administration

1 Marketing



OUR TEAM HELPS TO CREATE EXCEPTIONAL SOLUTIONS FOR  
TEST, MEASUREMENT AND CONTROL, WITH AND FOR OUR  
CUSTOMERS.



*“Decisions without measurements is guessing!”*  
we help you to AVOID it.

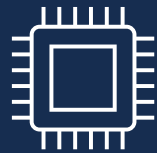
# MARKETS



AUTOMOTIVE



AVIOSPACE



ELECTRONICS



ELETTO MED



HVAC



INDUSTRY

# PARTNERS



Leading an Industrial Partner

Microsoft Partner





# OUR VALUES



## **PEOPLE-FIRST**

We are bytelabs and we think that people are the most important component.



## **RELATIONSHIP**

Building relationships of trust



## **ETHICS AND RESPONSIBILITY**

Responsible and respectful attitude towards things, thoughts and people.

# CUSTOMERS

**KEMET**  
a YAGEO company



**TECHNOGYM**

**Rpm**  
MOTORI ELETTRICI

**Phoenix**  
R+D

**CMC** VENTILAZIONE

HW VENTILATION  
The logo icon for HW VENTILATION consists of a circle with a stylized 'H' and 'W' inside, representing heat and water.

**TRASFOR**

**AERMEC**

**altran**

**cefla**

**infoolution**<sup>®</sup>  
The logo icon for infoolution features a stylized 'i' and 'o' that form a continuous shape, suggesting a flow or connection.

**FACO**  
HEAT EXCHANGERS AND DRY COOLERS

**ELETTROTEST**

**asa**

# CAPACITOR TEST SYSTEM

## CUSTOMER: KEMET



Film Capacitor characterization test.



Automatic test with integration of different tools. Lab application to execute measures and Cloud application for test request.



The test aims to evaluate the regression of components after climatic cycles.



Main Technologies: GPIB, SQL Server, API-Rest.

The screenshot displays the 'LAB TEST REPORT' interface for an Agilent E4980A LCR meter. The interface is organized into several sections:

- Product Information:** Includes fields for 'Codice Prodotto', 'Serie', 'Capacità', 'VDC', 'VAC', and 'Tolleranza'.
- Test Parameters:** Features 'Num. pezzi', 'Da', 'A', 'Riferimenti', 'Condizioni', 'Data inizio Prova', and 'Durata'.
- Measurement Settings:** Includes 'Step Nro', 'V. Source [V]', 'Time ACQ[s]', 'Measure Time', 'Measure Type', 'Lim I.R. [M]', 'Current Limit', and 'Averaging Rate'.
- Operator and Environment:** Contains 'Operatore', 'Data', 'Amb. °C', and 'R.H.%'.
- Test Configuration:** Includes 'Selezione Step Nro 1', 'Selezione Step Nro 2', 'Delta Capacità', 'Delta Tangente 1', and 'Delta Tangente 2'.
- Reporting and Execution:** Features 'Selezione grandezza', 'Modalità', 'Step Iniziale/Finale', 'Report TC', 'Report GA', and 'Selezione Step Nro'.
- Table:** A table with columns 'Step', 'Lim Inf', and 'Lim Sup'.
- Navigation:** Includes 'Start', 'Settings', and 'Exit' buttons at the bottom.

# END-OF-LINE TESTING OF GAS REDUCERS

## CUSTOMER: TARTARINI SRL



Gas reducer test



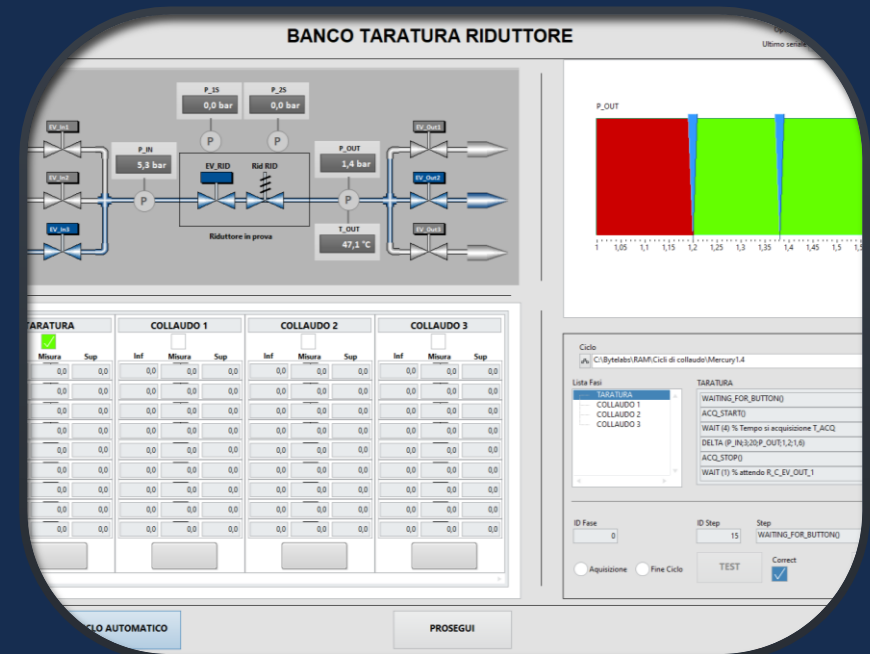
Automatic test with integration of different sensors, actuator and so on.



The aim is to test the main parameters of gas reducer.



Main Technologies: NI-DAQ, SQL Server, Report Generation.



# FAN CHARACTERIZATIONS AMCA210

## CUSTOMER: HW VENTILATION



Tunnel for testing Fan system



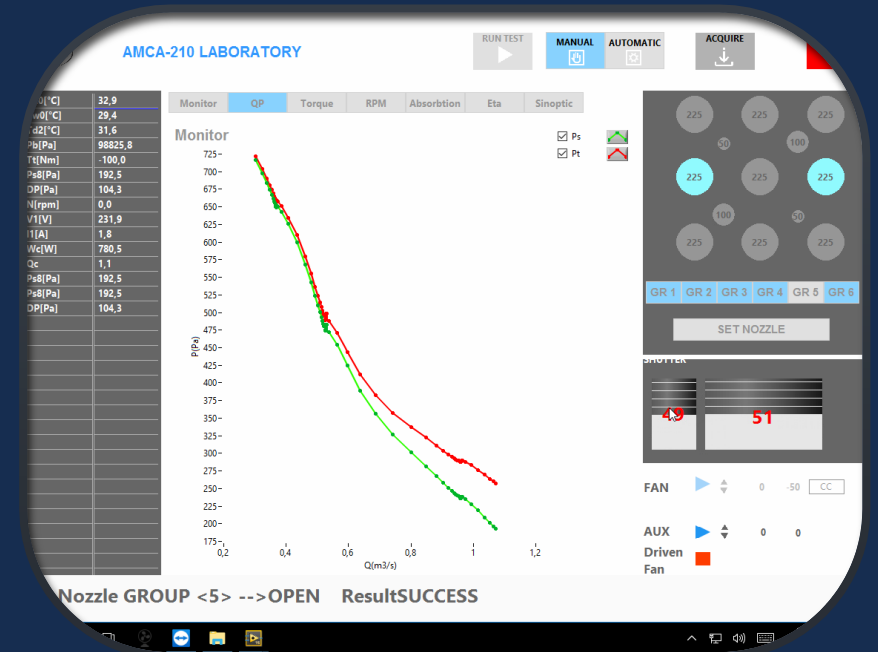
Automatic test with integration of different sensors and actuators.



The test aims to evaluate the characteristic of Fan.



Main Technologies: cDAQ, SQL Server, Report Generation.



# FLOW REGULATOR TEST FOR MEDICAL DEVICES

## CUSTOMER: PHOENIX-RD



End of Line test on flow regulator, for medical devices.



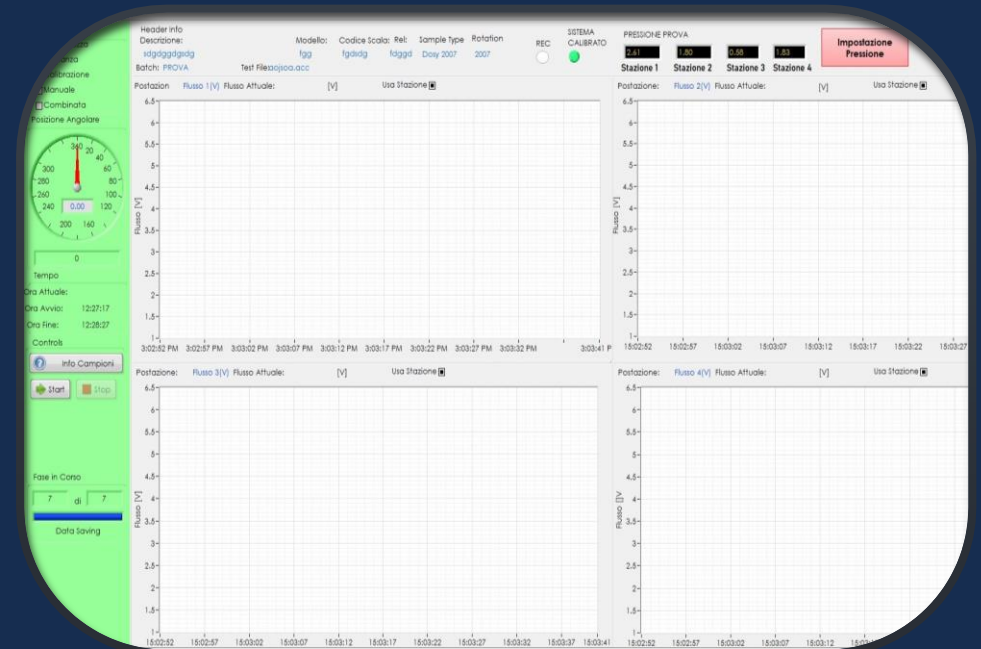
The test is in air to accelerate the test ISO 8536-13.  
40% of time reduction in EOL to test 100% samples.



The aim of test is to check flow regulators at different set points and automatically determine if parts are Pass or Fail. Standard compliance to: **"Infusion equipment for medical use -Part 13: Graduated flow regulators for single use with fluid contact, ISO 8536-13"**



Main Technologies: USB-DAQ, PDF report generation, ModBUS, LabVIEW.



# POSITION TRANSDUCER EOL TEST

## CUSTOMER: MARPOSS



System of Test and calibration for LVDT, AirGap and HBT sensors. Based on the old Analog Instrument, this new one is based on a high performance Hardware, with FPGA, RTOS Linux. PC Version and stand alone with display 7 or 10inch.



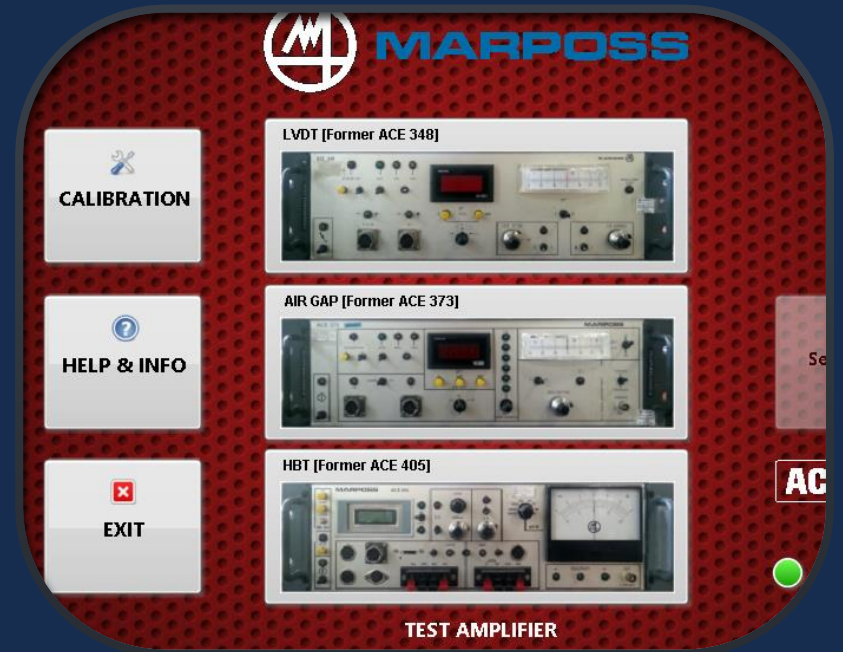
The test is in air to accelerate the test ISO 8536-13. 40% of time reduction in EOL to test 100% samples.



Aim of test is Calibration and Controls of "Transducer" produced by Marposs. Standard compliance to: ACE procedures.



Main Technologies: TCP-IP, SQL, LabVIEW, Report Generation.

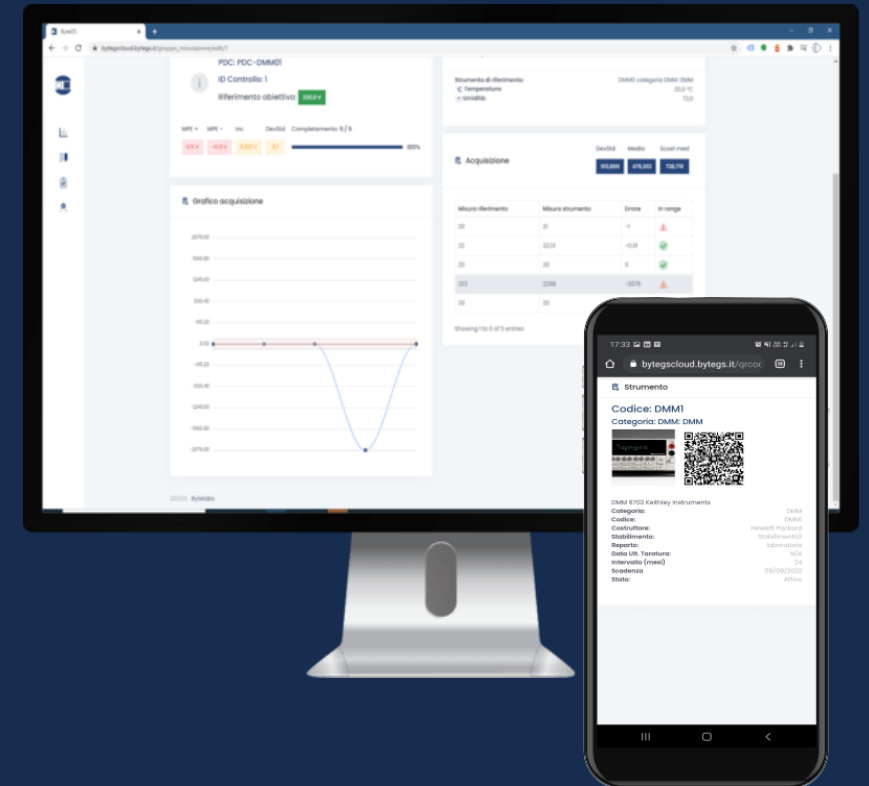


# OUR PRODUCT



SAAS SOFTWARE FOR INSTRUMENTS AND CALIBRATION

IS A SOLUTION TO HANDLE INSTRUMENTS, CALIBRATIONS BOOKING,  
FIND EVERY KIND OF DATA WHEREVER YOU ARE.





# THANK YOU

Contact us for your next project



0532 458971



info@bytelabs.it



<https://bytelabs.it>