



Service Monitoring and Remote Management (Task Force)

Milad Jason Daivandy
(Juelich Supercomputing Centre)
Task Force Leader

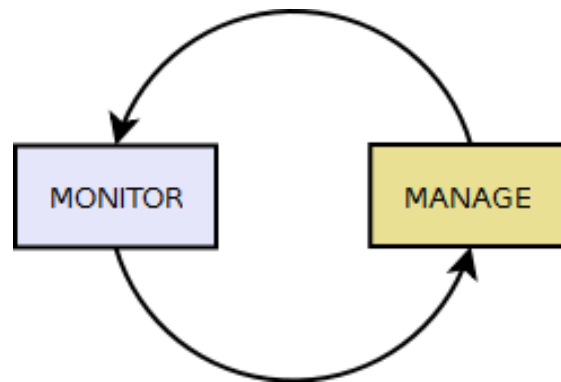
Outline

- Basic Concept
- Service Monitoring
- Remote Service Management
- Role of Messaging



Basic Concept

- Use service monitoring data to feed service management decisions
- Check if service management decisions have desired effects



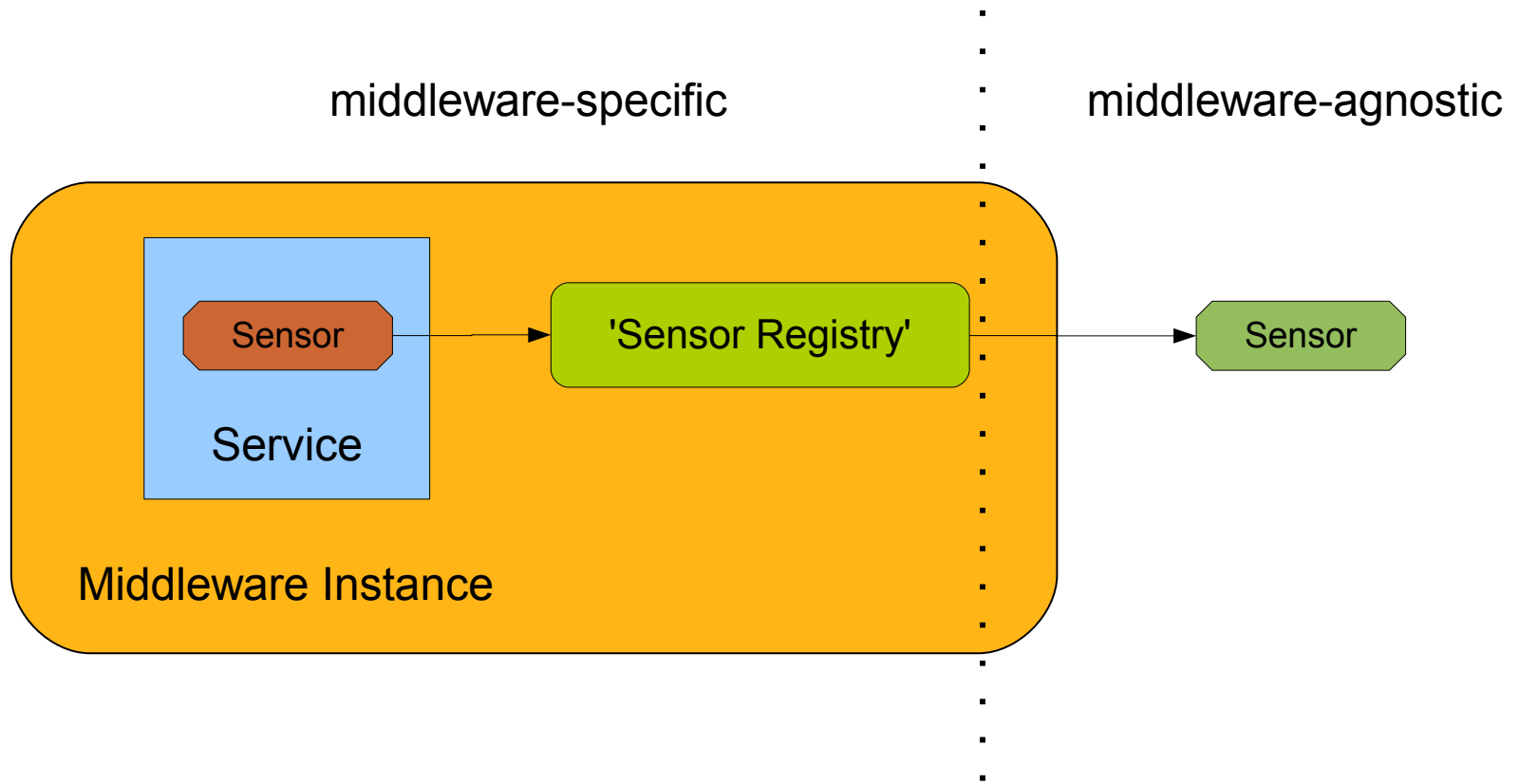
Service Monitoring I

- HOW TO: enable a service for monitoring
 - Expose data pertinent to certain criteria:
 - General behaviour (logging)
 - Performance (call frequency, current/mean processing times...)
 - Usage (current/mean user count...)
 - ...

Service Monitoring II

- Sensor
 - actual software artefact exposing data about a service
 - according to one criterion (call frequency, processing time etc.)
- Tackle middleware heterogeneity
 - Middleware-specific layer / concrete sensors
 - Middleware-agnostic layer / abstract sensors
- Harmonisation
 - Abstract sensors available to all 3 middlewares

Service Monitoring III



Service Management I

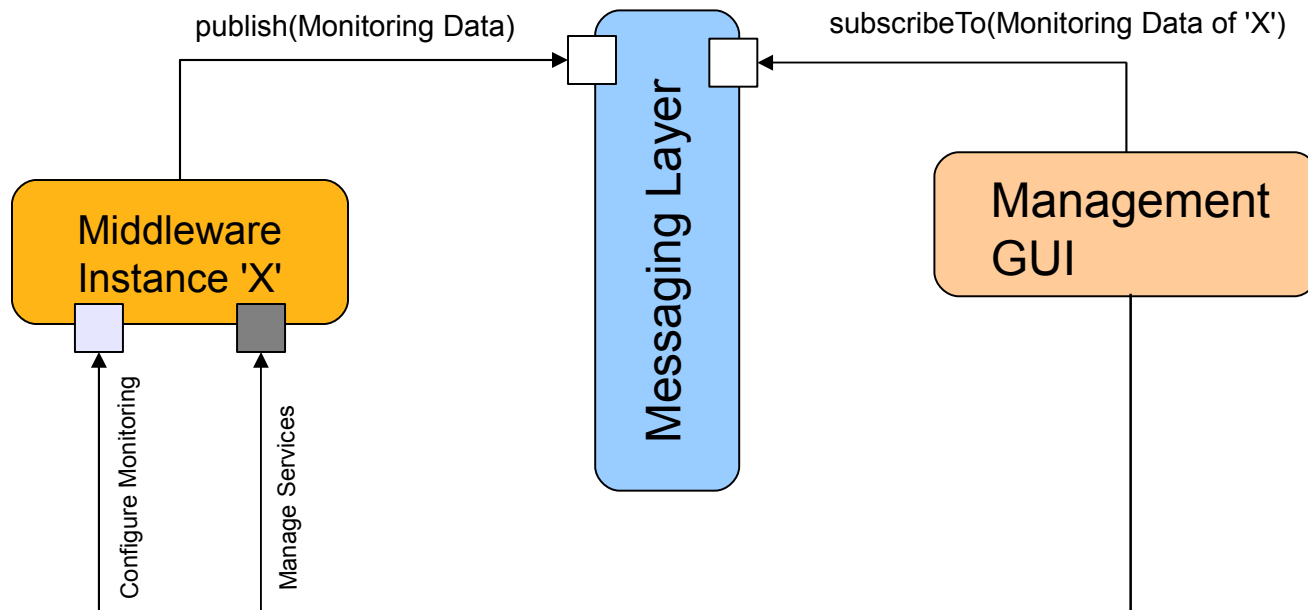
- HOW TO: make a service manageable
 - Add means to issue service management commands to service, e.g.:
 - Enable/disable service
 - Deploy/un-deploy a service
 - Change behaviour (e.g. employ a rule engine)
 - (Modify access control?)

Service Management II

- Graphical User Interface
 - Browser-based
 - Used for monitoring and managing
 - Lists all monitorable and manageable EMI middleware instances
 - Retrieves monitoring data
 - Allows for executing *management commands*

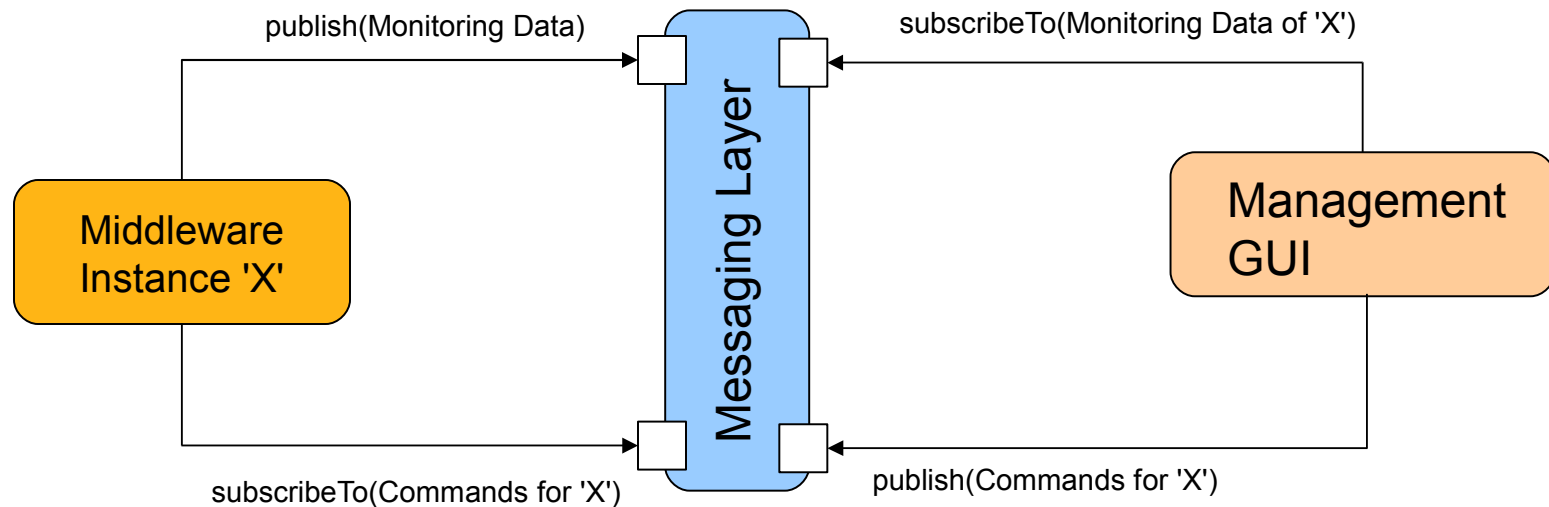
Role of Messaging I

- Use Messaging to retrieve monitoring data



Role of Messaging II

- Use Messaging to
retrieve monitoring data &
issue service management and monitoring actions





Thank you

EMI is partially funded by the European Commission under Grant Agreement INFSO-RI-261611