



# EMI Tools Report

Lorenzo Dini (CERN)

SA2.4 Task Leader

# Outline

- Status and Achievements
- Issues and Concerns
- Next Steps
- Topics to Discuss
- Preview
  - Metrics Report Generator
  - gLite-DM PT Nightlies



# Status and Achievements - 1

- Common tools and processes agreed
- ETICS running with no downtime
- 4 ETICS Releases in 6 months with many improvements for EMI
- Build infrastructure working 24/7
  - Currently 4 EPEL WN and 3 builds daily
- JIRA, Savannah and EMI Repository area reliable services

# Status and Achievements - 2

- Integration and Configuration support to EMT, SA1 and PTs
  - Configuration and Integration task-forces
  - Configuration cloner and cleaner
  - Externals installed and added to ETICS
  - Integration and Configuration Guidelines
- Plugins released/fixed as planned
- Report generator work in progress
- No complaints received

# Issues and Concerns

- EMI start required more resources than allocated in the DoW
- Resources will reduce to normal over time to just keep the services stable
- Virtual infrastructure not 100% reliable
  - Free and old VMWare used
  - Condor
  - Many problems with old platforms

# Next Steps

- New ETICS Client to be released
  - Default OS version dependencies, bugfixes
- Metrics support
  - Plugins and Report Generator
- Infrastructure reliability
  - Move to new virtualization technology
  - New monitoring system under construction
- Performance, Job Queues and cancelling
- More PTs involved in nightly tests?

# Topics to Discuss

- ETICS configuration to work in both root builds (mock style) and in user builds within workspaces (ETICS style)
  - pkg-config?
  - locations?
- RPM and DEB Packaging
  - ETICS or custom SPEC/Control files?
  - Source packages?
- Locking removal

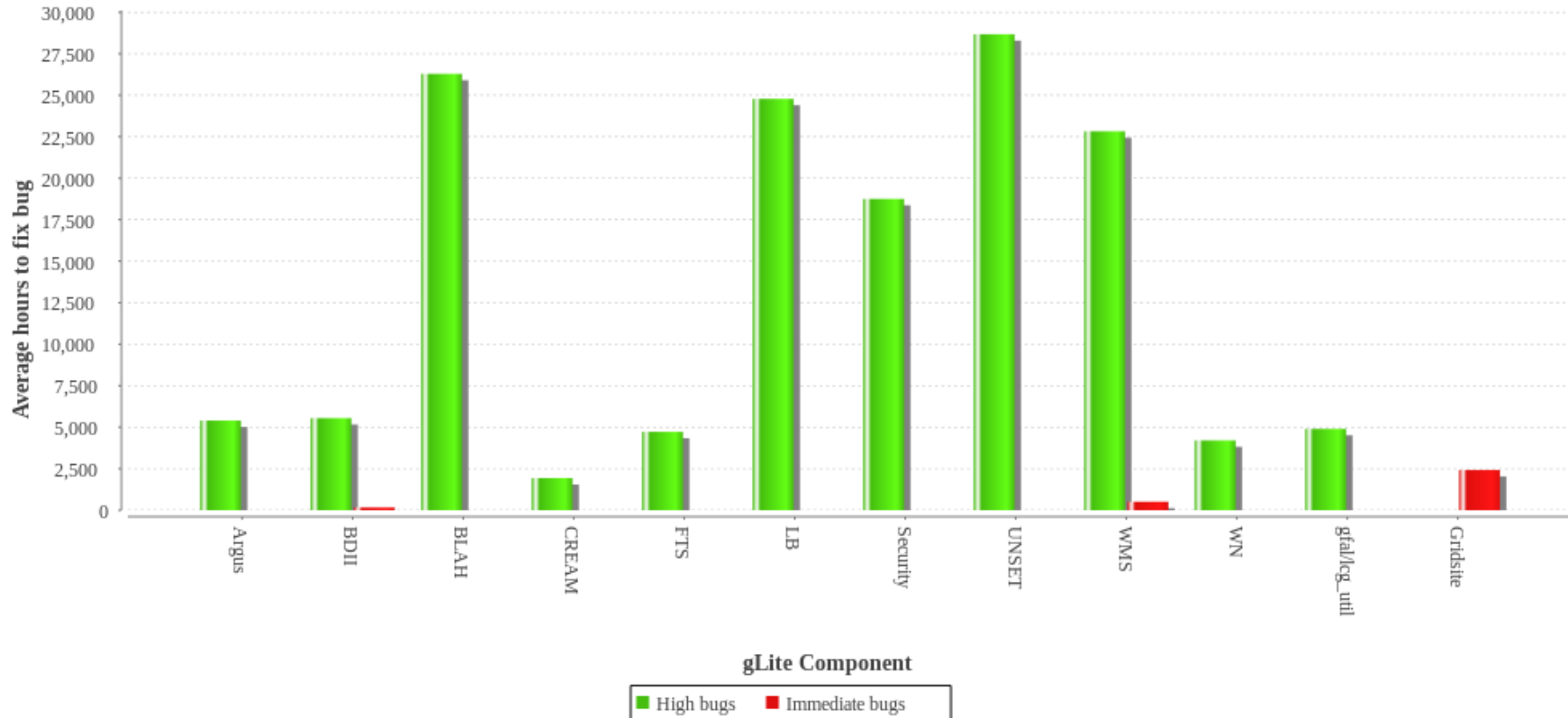
# Metrics Report Generator

- Independent from builds
- Reads the process metrics from the PT XML files and code metrics from the ETICS repository
- Writes a PDF report with the outcome of the QA analysis



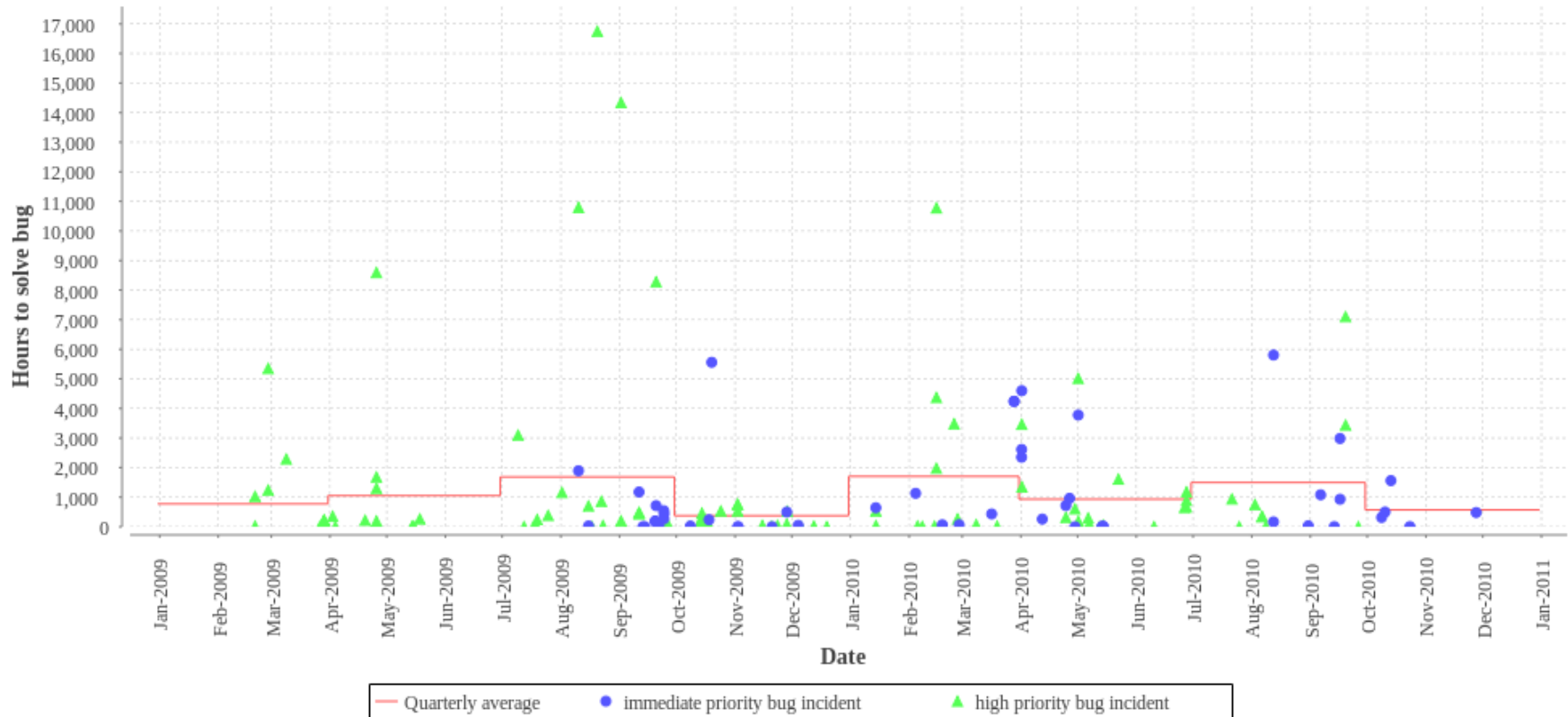
# Metrics Plot Examples

Average value for immediate and high priority bugs in gLite closed between Jan-2009 and Nov-2010



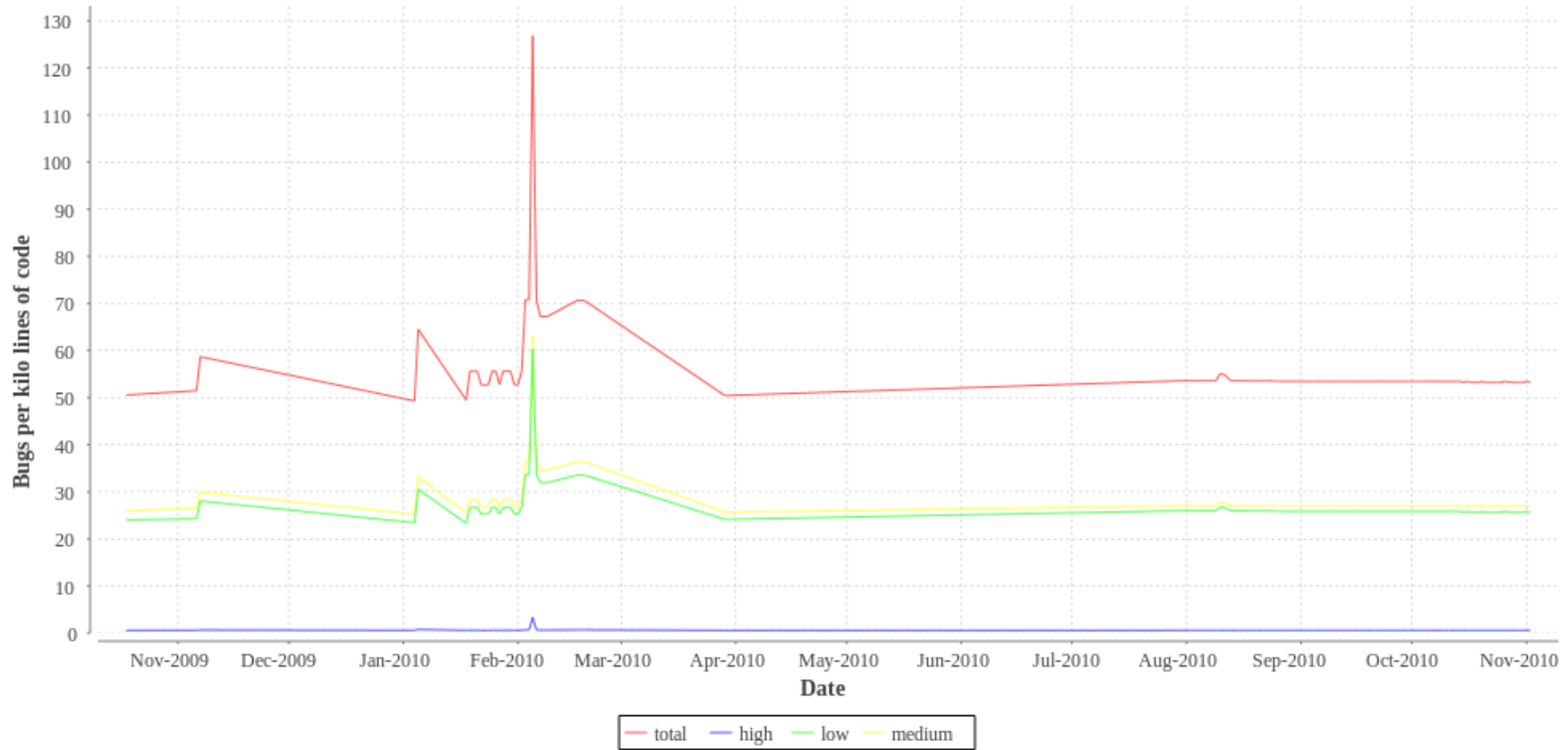
# Metrics Plot Examples

Hours to close bug for immediate and high priority bugs in UNICORE closed between Jan-2009 and Nov-2010



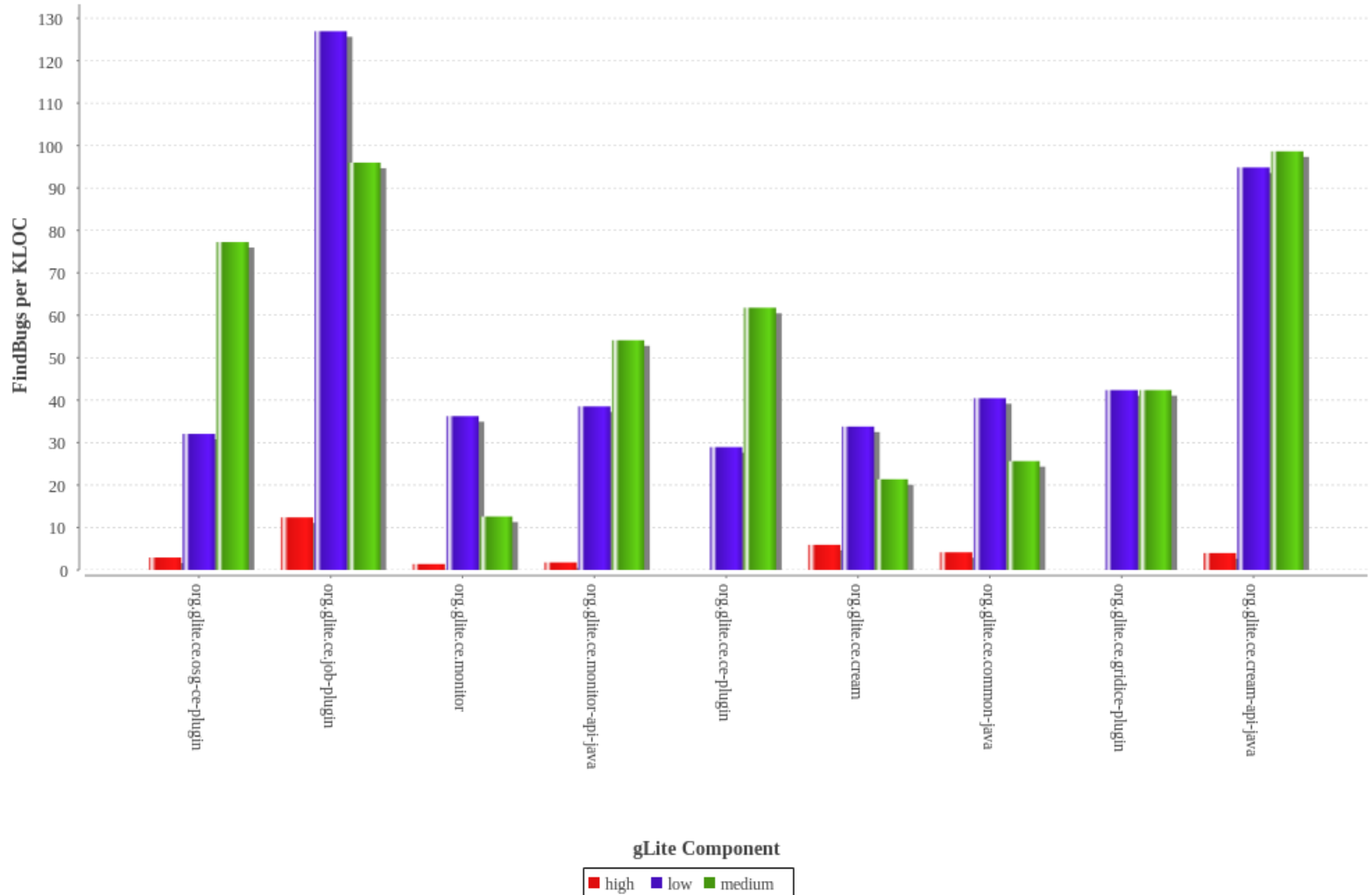
# Metrics Plot Examples

## Time Series Chart



# Metrics Plot Examples

FindBugs per KLOC for the glite.ce subsystem  
at 19. November 2010



# gLite-DM PT Nightlies

- Every night sent to 4 platforms
  - 9 builds with automatic creation of YUM repositories
  - 24 deployments as root in ETICS VMs
  - 13 testsuites launched
- FTA, FTS, FTM, DPM, LFC, LCG\_UTIL
- Custom tool created for fast analysis of the results (<http://saket.cern.ch/doc>)

# DM PT Nightly Process

SAKET Archive   

Configuration

Day	Time	Duration	Build	Deployment	Test
November 2010					
Wednesday 17	07:00:21	11:00:19	89%	78%	35%
Tuesday 16	00:51:07	04:51:05	78%	48%	17%
Monday 15	05:07:59	09:07:57	78%	22%	4%
Thursday 11	23:00:25	03:00:22	78%	57%	17%
Thursday 11	02:22:51	06:22:49	100%	87%	0%
Wednesday 10	07:00:27	11:00:26	100%	65%	35%
Tuesday 09	00:32:53	04:32:51	78%	43%	26%
Sunday 07	23:12:34	03:12:32	100%	65%	35%
Thursday 04	23:40:07	03:40:05	100%	78%	43%
Thursday 04	07:00:32	11:00:30	78%	48%	17%
Wednesday 03	07:00:22	11:00:20	100%	71%	17%

## S lcgdm

lcgdm.SLC4.HEAD

Project config.	Platform	Build	Test component	Deployment	Test
glite_3_1_cert	slc4_ja32_gcc346	<a href="#">Success (81 / 81)</a>	glite-SE_dpm_mysql	<a href="#">Success</a>	<a href="#">Failed (33 / 35)</a>
			glite-SE_dpm_disk	<a href="#">Success</a>	Not defined
			glite-LFC_mysql	<a href="#">Success</a>	<a href="#">Success (42 / 42)</a>
			glite-LFC_oracle	<a href="#">Success</a>	<a href="#">Success (42 / 42)</a>
	slc4_x86_64_gcc346	<a href="#">Success (81 / 81)</a>	glite-SE_dpm_mysql	<a href="#">Success</a>	<a href="#">Failed (33 / 35)</a>
			glite-SE_dpm_disk	<a href="#">Success</a>	Not defined
			glite-LFC_mysql	<a href="#">Success</a>	<a href="#">Success (42 / 42)</a>
			glite-LFC_oracle	<a href="#">Success</a>	<a href="#">Success (42 / 42)</a>

# DM PT Nightly Process



<a href="#">Home</a>
<a href="#">Logs</a>
<a href="#">Package List</a>

## Module Summary

**Project name:** org.gLite  
**Module name:** lcgdm  
**Description:**  
**Version:** 0.0.0  
**Release:** 0  
**Vendor:** EGEE

## Execution Summary

**Result:** **Success**  
**Success rate:** 100% (81/81)  
**Start time:** 16/11/2010 20:20:32  
**End time:** 16/11/2010 20:58:38  
**Duration:** 00:38:06  
**Configuration:** lcgdm.SLC4.HEAD

## Deployment report

### yaimgen [ SUCCESS ]

Success rate: 100% (1/1)  
Start time: Tue Nov 16 21:23:42 2010  
End time: Tue Nov 16 21:57:52 2010  
Duration: 0h 34m 10s

```
[INFO] YG_APPEND_PUBLIC_KEY set! Granting access  
[INFO] Host: lxetvm0027.cern.ch  
[INFO] Arch: SL4 i386, gLite 3.1  
[DEBUG] Log: /tmp/gLite-SE_dpm_mysql_tests/yaimgen.xml  
[DEBUG] Test log: /tmp/gLite-SE_dpm_mysql_tests/tests.xml
```

```
ls -l /etc/yum.repos.d/ [ SUCCESS ]
```

```
[INFO] Calling yum update
```

```
yum [ SUCCESS ]
```

# Conclusions

- All services running reliably
- Good support to all EMI
- Service improvements foreseen
- Good progress on metrics tools
- Resources will be reduced to normal
- Think about the nightly testing







**Thank you**

**EMI is partially funded by the European Commission under Grant Agreement INFSO-RI-261611**

# Topics to Discuss

- ETICS configuration to work in both root builds (mock style) and in user builds within workspaces (ETICS style)
  - pkg-config?
  - locations?
- RPM and DEB Packaging
  - ETICS or custom SPEC/Control files?
  - Source packages?
- Locking removal