



Common XACML Authorization Profile

Valery Tschopp (SWITCH)

Argus Product Team

Outline

- Goal of the Profile
- Open Questions
- XACML Attributes



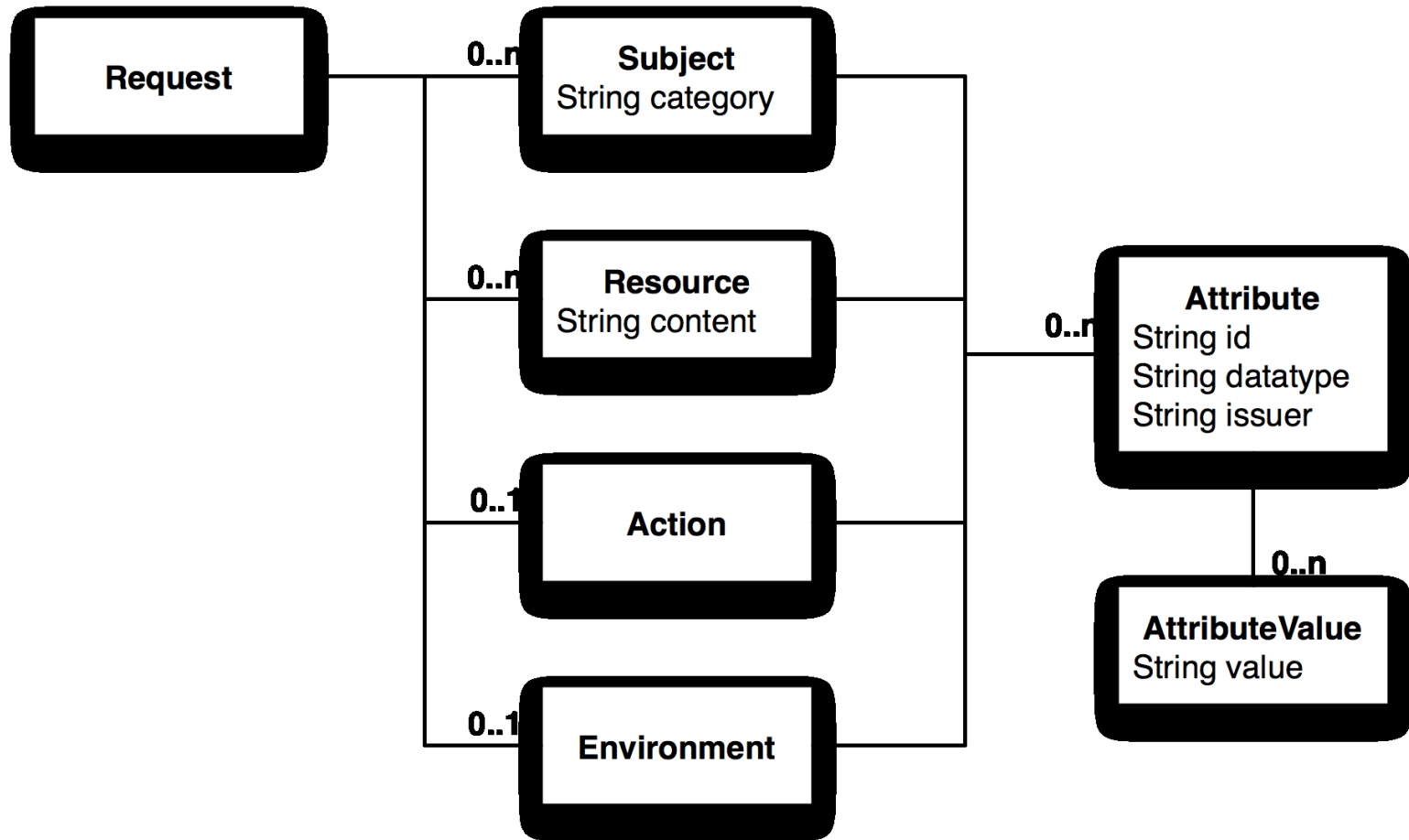
Goal of the Profile

- Render consistent decisions about the **user** across all 3 middleware stacks
 - *Ban user X to perform any action on any resource!*
 - *Can user X perform action Y on resource Z?*
- Define the XACML attributes required to identify the user, the resource and the action

Open Questions

- A common XACML authorization profile
 - For Computing Element only?
 - Include Worker Node (gLite WN) too?
 - And EMI Execution Service (ES)?
 - And Data Management?
- Support for XACML Response
 - Should we define Obligation id?
 - And AttributeAssignment id and value?

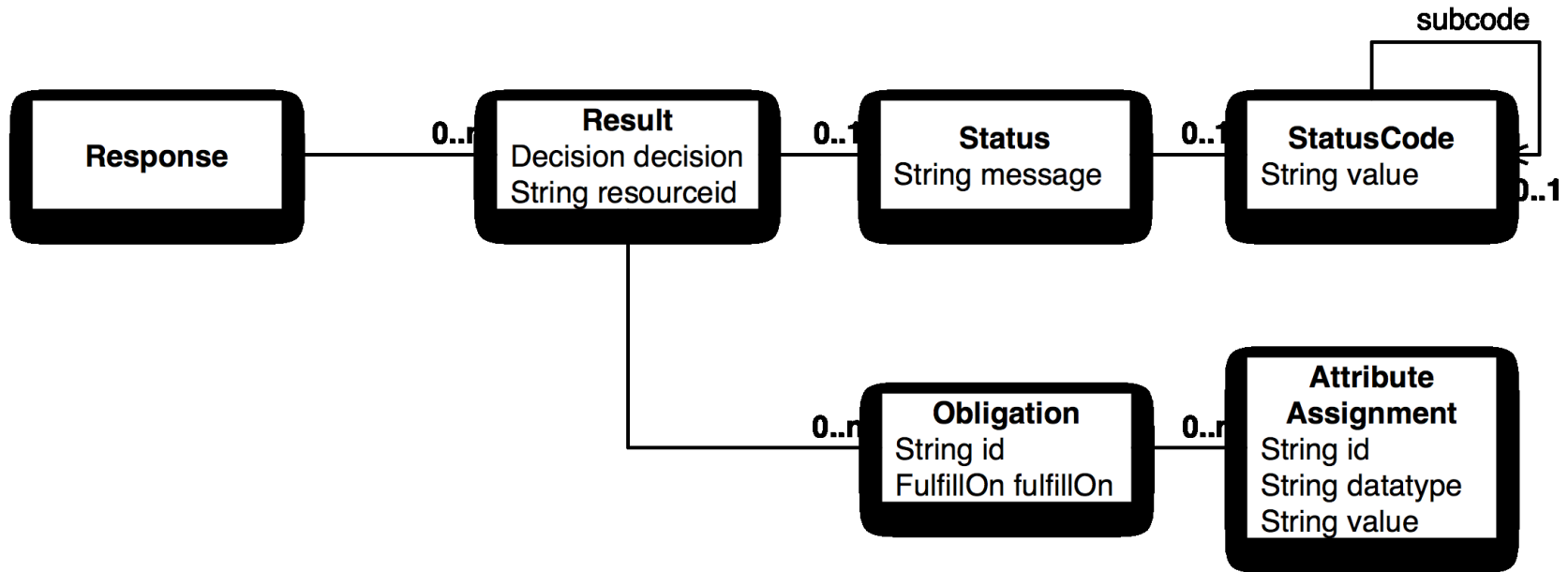
XACML Request



XACML Attributes

- See the wiki page online
<https://twiki.cern.ch/twiki/bin/view/EMI/XACMLCommonCEProfile> (r9)
- Discuss and comment

XACML Response



XACML Obligation

- Should we define Obligation in this profile?
 - Like mapping obligation and related attribute assignments (user-id, group-id, ...)

References

- Common XACML wiki page
<https://twiki.cern.ch/twiki/bin/view/EMI/EmiJra1T4XACML>
- Common SAML wiki page
<https://twiki.cern.ch/twiki/bin/view/EMI/EmiJra1T4SAML>
- Send comments and feedback to
emi-jra1-sec-saml@eu-emi.eu



Thank you

EMI is partially funded by the European Commission under Grant Agreement INFSO-RI-261611