

Overview: Future Circular Collider Workshop – 7-11 February 2022 - Liverpool

The 5th FCC Physics, Experiments and Detectors workshop will reflect the status and achievements of FCC PED studies and initiate new activities. All PED Working group packages will be represented, Physics Programme, Physics Performance, Detector Concepts and Physics Software and Computing, as well as the joint FCC-ee Accelerator-Experiment working groups (machine-detector interface (MDI) and centre-of-mass energy calibration, polarization and monochromatization (EPOL)). Joint sessions and tutorials will reinforce the synergies between working groups. The workshop welcomes the widest community, geographically, thematically (colliders and beyond), and members of other ‘Higgs factory’ and future projects.

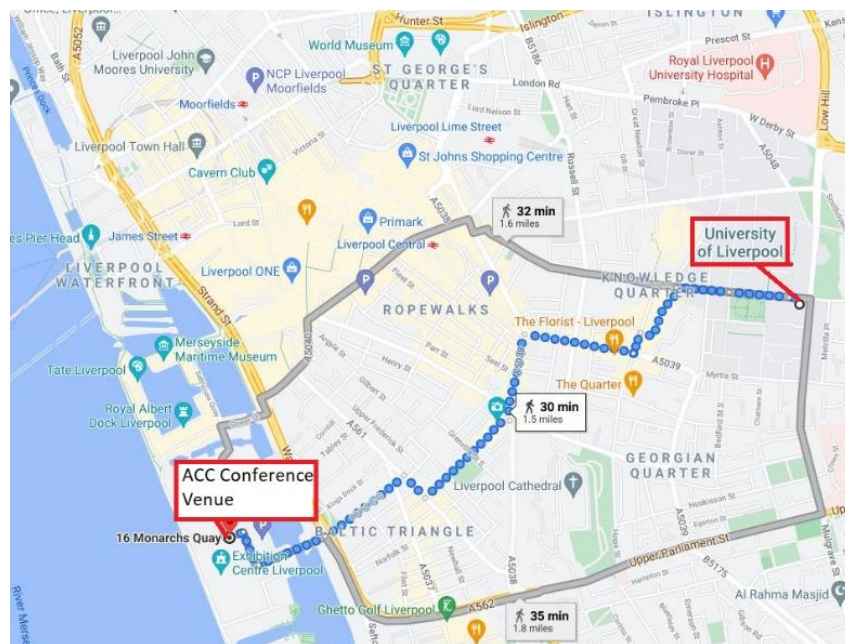
The 5th FCC Workshop website can be found here: <https://indico.cern.ch/event/1066234/>. It is the portal to the Liverpool-based event organised by CERN and the FCC collaboration. This document gives an overview of the FCC Workshop.

Programme and Schedule

For sanitary reasons, the event will be held in hybrid mode, with a limited number of participants allowed on site. All plenary and parallel sessions will be accessible for remote participants by Zoom. The event will be hosted on University of Liverpool campus and the Arena and Convention Centre (ACC) Liverpool. Monday and Friday will see plenary sessions in the brand new Yoko Ono Lecture Theatre on University Campus. The Central Teaching Labs will host a Poster and Drinks reception on Monday evening.

From Tuesday until Thursday the Workshop delegates will participate in a mix of both parallel and plenary sessions at the ACC Conference Venue located conveniently at the waterfront in Liverpool’s city centre. The excursions, outreach event and conference dinner are all within walking distance of the ACC. Further information about the timetable are given in the following.

Map – Liverpool City Centre and University of Liverpool



In-person attendance

Participants attending the Workshop in person will have access to the entire programme, i.e. all scientific session, drinks and poster reception, workshop dinner, excursions etc. The fee will also include all catering. It is planned that up to 200 people will attend in person; the venues can in principle cope with higher numbers, but this level is expected for all planning purposes.

Fee: A fee of £300.- per person (full/student) will be charged for in-person attendance and includes all aspects of the programme. This fee is excluding accommodation and transport. Students will be given an opportunity to apply for a scholarship which would partially refund their fee. The level and number of scholarships will depend on the level of sponsorship that can be attracted.

Remote attendance

Participants attending the Workshop remotely will have access to the plenary and parallel sessions only. Access will be provided by Zoom via the event indico page. Streaming will include the slides of the presentation and the speaker's voice. Questions can be submitted via the Zoom webinar tool and will be moderate by the respective session chair.

Fee: No fee will be charged to registered participants accessing remotely with the aim to reach out to a maximum audience and encourage newcomers' participation. It is noted that no fee might encourage some to not attend in person and this risk has been taken into account.

Timetable – Overview

Date	Monday 7.2.22		Tuesday 8.2.22		Wednesday 9.2.22		Thursday 10.2.22		Friday 11.2.22	
Location	UoL Campus		ACC		ACC		ACC		UoL Campus	
	Coffee/Tea		Coffee/Tea		Coffee/Tea		Coffee/Tea		Coffee/Tea	
Morning	Plenary	Yoko Ono LT	Parallel	Rm 4A, 4B, 14, 12	Parallel	Rm 4A, 4B, 14, 12	Plenary	Rm 11	Plenary	Yoko Ono LT
	Coffee Break		Coffee Break	Rm 12	Coffee Break	Rm 12	Coffee Break	Rm 11	Coffee Break	
	Plenary	Yoko Ono LT	Parallel	Rm 4A, 4B, 14, 12	Parallel	Rm 4A, 4B, 14, 12	Plenary	Rm 11	Plenary	Yoko Ono LT
	Lunch		Lunch	Rm 12	Lunch	Rm 12	Lunch	Rm 11		
Afternoon	Plenary	Yoko Ono LT	Parallel	Rm 4A, 4B, 14, 12	Excursion	Around Liverpool City Centre	Plenary	Rm 11		
	Coffee Break		Coffee Break	Rm 12			Coffee Break	Rm 11		
	Plenary	Yoko Ono LT	Parallel	Rm 4A, 4B, 14, 12			Plenary	Rm 11		
Evening	Drinks and Posters	Atrium CTL	Outreach Event	Anglican Cathedral	Dinner	Liver Building				

Scientific Programme

Full information about the Scientific Programme will be provided by the Scientific Organising Committee to the Local Organising Committee.

It would be good to add at least a rough overview to indico as soon as possible to give those interested in the event an idea of the scope and speakers. **[Action required]**

Week overview – Day-to-day

Monday – University of Liverpool

Participants will join the programme at the brand new [Yoko Ono Lennon Centre](#) for a full day of **plenary sessions**. At the start the in-person participants will be welcomed with coffee/tea, register for the entire week, and receive their welcome pack. In between sessions, catering will be provided within the Centre. Ample space and seating allows for safe social distancing of the in-person participants.

After the day programme, the **Drinks Reception with Posters** (up to 50) will take place in the Atrium of the Central Teaching Labs, a 5-minute walk from the Yoko Ono Lennon Centre. Drinks and canapes will be provided.

Tuesday – Arena and Convention Centre

The next three days will take place at the ACC, located at the Liverpool waterfront. The Tuesday is a full day of **parallel sessions** which are taking place in the following 4 rooms:

- Room 4A, max capacity for 95 people;
- Room 4B, max capacity for 95 people;
- Room 12, max capacity for 195 people;
- Room 14, max capacity for 63 people;

The max capacity of these rooms allows for safe social distancing and accommodate max 200 participants over these 4 rooms. Catering (coffee/tea stations and lunch bags) will be provided on tables in the largest room, room 12.

In the evening, a public **outreach event** will take place in the Anglican Cathedral. Details are being discussed and will be confirmed asap. This will engage the local public in a dialogue about the “origins of the universe”.

Wednesday – Arena and Convention Centre

The scientific program comprises the morning only with **parallel sessions** in the same 4 rooms at the ACC as on Tuesday. In the afternoon, after lunch, the participants can chose to engage in **excursions** in Liverpool’s city centre. Participants will be asked to sign-up for these via the event website (max 1 excursion per person) when registering for the workshop. Full details about all excursions are included towards the end of this document.

On Wednesday evening the formal **Workshop Dinner** is planned to take place at the prestigious Royal Liver Building, Liverpool’s Iconic Landmark Venue. Upon arrival, guests will receive a welcome drink followed by a three-course dinner and drinks. Entertainment will accompany the dinner.

Thursday – Arena and Convention Centre

The last day at the ACC sees **plenary sessions** throughout the day in Room 11 with a max capacity for 418 people to allow safe social distancing for all in-person participants. Catering (coffee/tea stations and lunch bags) will be provided.

Friday – University of Liverpool

The final day of the Workshop will again take place at the Yoko Ono Lennon Centre on University campus. The scheduled **plenary sessions** are taking place during the morning only, allowing the participants to travel back in the afternoon. No lunch will be provided on the departure day. In the afternoon, a panel session in the Yoko Ono Lennon Centre will engage students and staff from across the university in a dialogue about the future of particle physics and the various challenges the FCC project poses. Panel members and exact format tbc.

Website

An indico website has been established and provides information about the event, the two venues and how to get there, suggestions for overnight accommodation, social activities (e.g. reception, dinner, excursions), and payment.

Currently outstanding are:

- Registration – separate registrations will be created to distinct between remote participants (no programme participation details required) and in-person participants (full participation and optional presentation details required), allowing for a more streamlined registration process and event follow up;
- timetable providing participants with a broad idea of the scientific programme – details are required from the Scientific Programme Committee. [Action required]

Event Poster

An event poster has been requested from the International Organising Committee. [Action required]

Workshop Dinner Overview – Wednesday evening, 9 February 2022

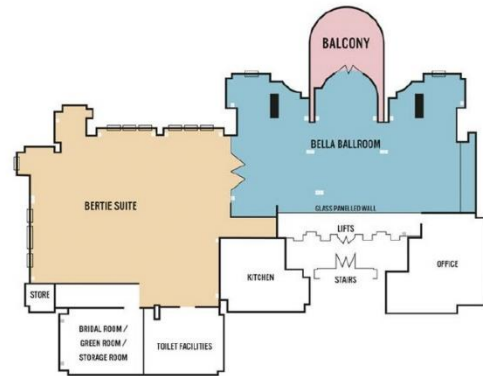
The Venue – Royal Liver Building

Situated on the first floor of the iconic Royal Liver Building, The Venue is an event space that needs no introduction.

Panoramic views over the River Mersey and a prime location on Liverpool’s world-famous waterfront; The Venue at the Royal Liver Building offers an impressive setting for every occasion. If you love Liverpool, there’s no better place to be. The contemporary white interior offers a complete blank canvas space with a polished finish that easily transforms into your vision, making it the perfect back drop to any event from weddings to corporate presentations.



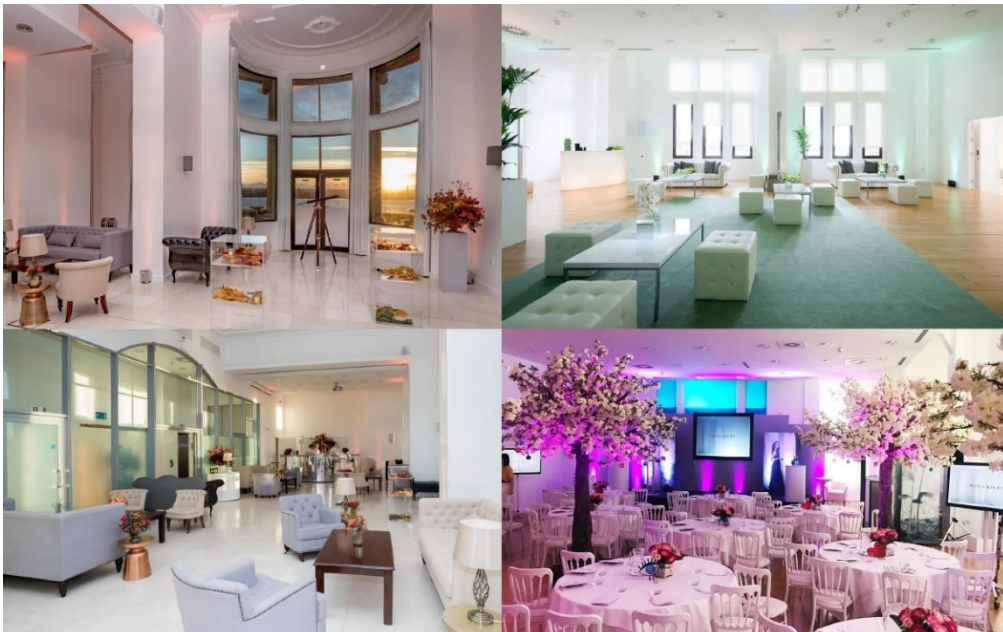
The Royal Liver Building was originally commissioned by the Royal Liver Friendly Society in 1907 to house their 6000 employees. Since completion in 1911 it has formed part of Liverpool’s world famous skyline as one third of the historic ‘Three Graces’. Surviving two world wars, The Royal Liver Building has survived to become the world recognisable landmark of Liverpool.



Included

- Exclusive Venue Hire of the first floor of the Royal Liver Building between 19:00-01:00
- Drink on Arrival (Glass of Prosecco/Bottle of Beer)
- 3 course seated dinner
- ½ bottle of wine per person

Location: 15min walk from the ACC



Excursion Options – Wednesday afternoon, 9 February 2022

Museum of Liverpool

The Museum of Liverpool reflects the city's global significance through its unique geography, history and culture. Visitors can explore how the port, its people, their creative and sporting history have shaped the city. Our amazing collections, span more than 10,000 years of Merseyside's history, including social and community history, archaeology, the King's Regiment and transport.

Location: Waterfront, 5-8min walk from the ACC

Website: <https://www.liverpoolmuseums.org.uk/museum-of-liverpool>

Walker Art Gallery

The Walker Art Gallery is the national gallery of the North. For 130 years it has housed Liverpool's most outstanding art collection. Many of the gallery's most important works have been on display in the city for nearly 200 years.

The history of the gallery and its collection reflects the people of Liverpool's commitment to and appreciation of the arts. It also illustrates the generosity of the city's leaders in ensuring public access to such works. Here you can find out more about the Walker's long history and how it came to be one of the country's greatest galleries. On show are beautiful paintings, sculpture and decorative art from the 13th century to the present day.

Location: 20 min walk from the ACC

Website: <https://www.liverpoolmuseums.org.uk/walker-art-gallery>

British Music Experience

With over 600 artefacts on display in Liverpool's iconic Cunard Building. From the Beatles, The Rolling Stones and Bowie to The Spice Girls, Oasis, Adele and X-Factor, the BME boasts an unrivalled collection of memorabilia, stage outfits, instruments, images and footage.

It charts the beginnings, rise and influence of British pop from 1945 to the present day. We've got outfits worn by artists from Freddie Mercury and Dusty Springfield, to the Spice Girls, Adam Ant and Little Mix and musical instruments played by some of the world's most renowned artists from Noel Gallagher to the Sex Pistols.



We even have hand written song lyrics from Adele, the original statues from the Brits and the Apple Corp front door from Saville Row. The Museum includes galleries, interactive zones, audio visual experiences and hologram performances. You can get hands-on in the Gibson Interactive Studio by learning to play guitar, drums or keyboards and dance your way through the eras in our Dance the Decades studio.

Website: <https://www.britishmusicexperience.com/>

Maritime Museum

The Maritime Museum is at the heart of Liverpool's waterfront in the Royal Albert Dock Liverpool, which celebrates its 175th anniversary in 2021. Exhibitions such as 'Live on Board gallery', 'Titanic and Liverpool' and 'The Old Dock tour' give the visitor a chance to discover Liverpool's seafaring past and to find out more about life at sea.

Location: Albert Dock/Waterfront, 5min walk from the ACC

Website: <https://www.liverpoolmuseums.org.uk/maritime-museum>

The Beatles Story Museum

Be transported on an incredible immersive journey as we tell the story of how four young lads from Liverpool were propelled to the dizzy heights of fame and fortune from their humble childhood beginnings.

Replicas of the Casbah, Mathew Street, Abbey Road Studios and The Cavern authentically capture the early '60s, allowing you to personally experience the very places that helped make The Beatles the greatest band in the world.

Hear the story unfold through our complimentary 'Living History' audio guides, which are available in twelve different languages (English, French, Spanish, German, Italian, Russian, Polish, Mandarin, Cantonese, Japanese, Brazilian Portuguese and Korean). With special exhibitions, authentic memorabilia and exclusive photographs, there's all this and much more at this award-winning attraction.

Website: <https://www.beatlesstory.com/>



Silent Adventures Liverpool

Music is the blood of Liverpool. It seeps from the souls of Scousers, flows into the River Mersey, thunders out to sea... and changes the world! Silent Adventures invites you on a unique roaming riot of revelry around the sound soaked streets of the music capital of the UK.

Expect all your inhibitions to evaporate away as you don our hi-tech headsets and bust some swinging grooves while our Silent Adventure host takes you on a one hour tour of this amazing City. You'll never look at Liverpool, or yourself, in the same way again!



Website: <https://silentadventures.co.uk/liverpool/>