

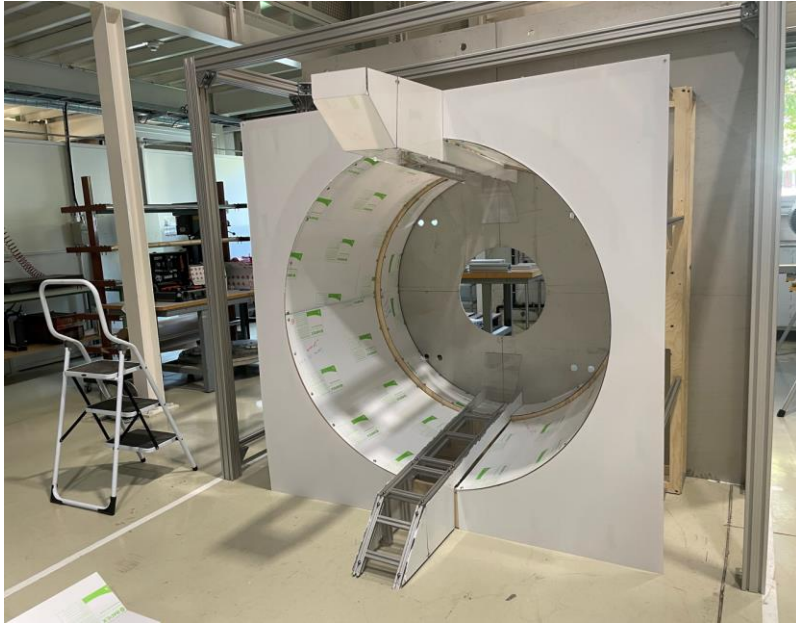


# Update Q1-TAXS region mock-up

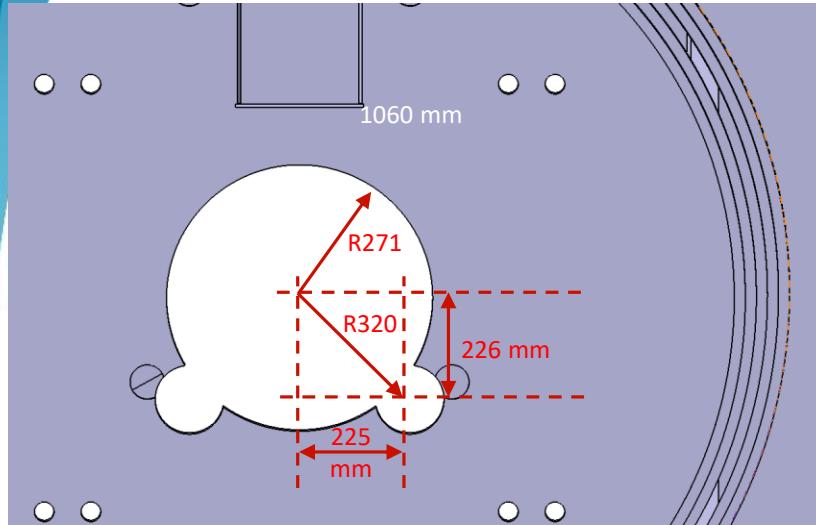
O. Boettcher / WP8

*Courtesy: - François Morel + Kevin Buffet (BE-EA for design support)*  
*- Ruth Diaz Vez - WP8 (for installation support and taking over part of the development )*  
*- Jacky Tonoli - EN-MME (for building the inner shape of CMS forward shielding)*  
*- Gregory Perrin-Bonnet +Olivier Crettiez – TE-MS-CNC*  
*(NORMA180 - poly carbonate cutting Workshop)*

# Q1-TAXS region mock-up on 13/10/2021, ready for start of 1<sup>st</sup> study WP8-1 (EN-MME, WP12, WP8)



# Study WP8-1: VAX service pipe passages drilling into CMS forward shielding



**Depth of the holes: 235 mm**

**Minimum margin for installation: 20 mm**

**Flange diameter (studies by WP12 ongoing):**

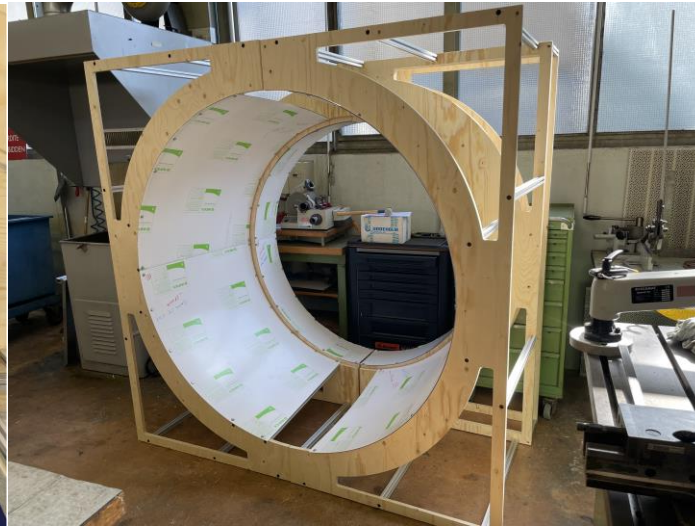
- Quick flange:  $D=96\text{ mm} \rightarrow$  Min hole diameter:  $136\text{ mm} \rightarrow \mathbf{D\_hole=140\text{ mm}}$
- ISO bolted flange:  $D=114\text{ mm} \rightarrow$  Min hole diameter:  $154\text{ mm} \rightarrow \mathbf{D\_hole=160\text{ mm}}$





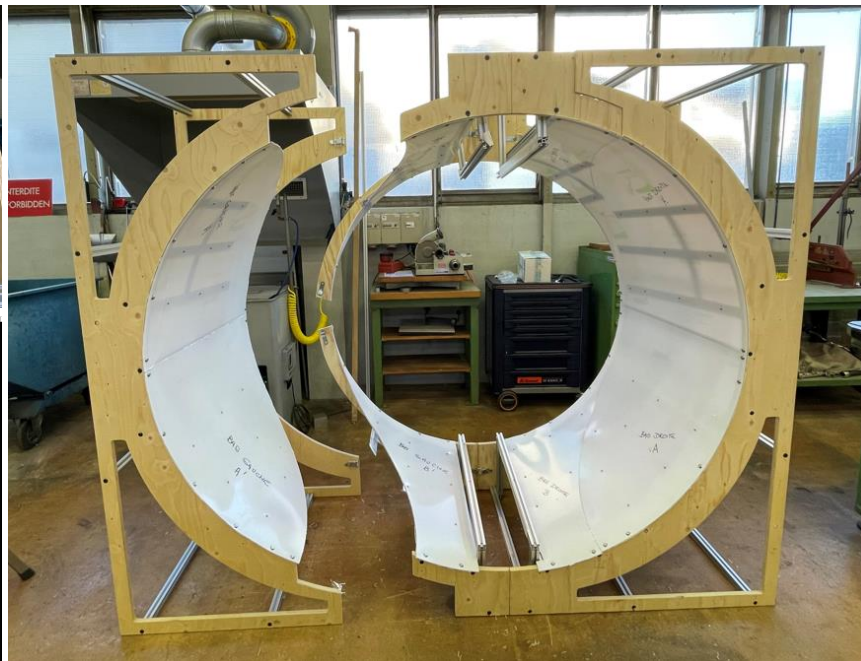
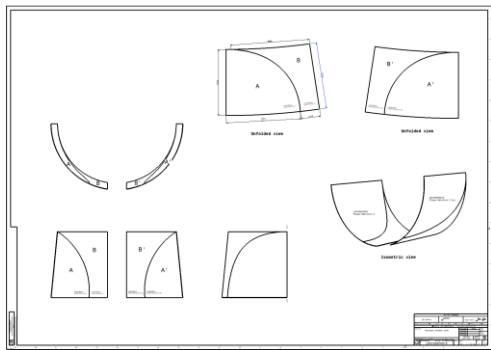
# Pictures related to finishing of CMS shielding

- Production of the conical cylinder shape separated into fixed and removable elements (CMS laterals doors) and ridged enough to step and work inside.



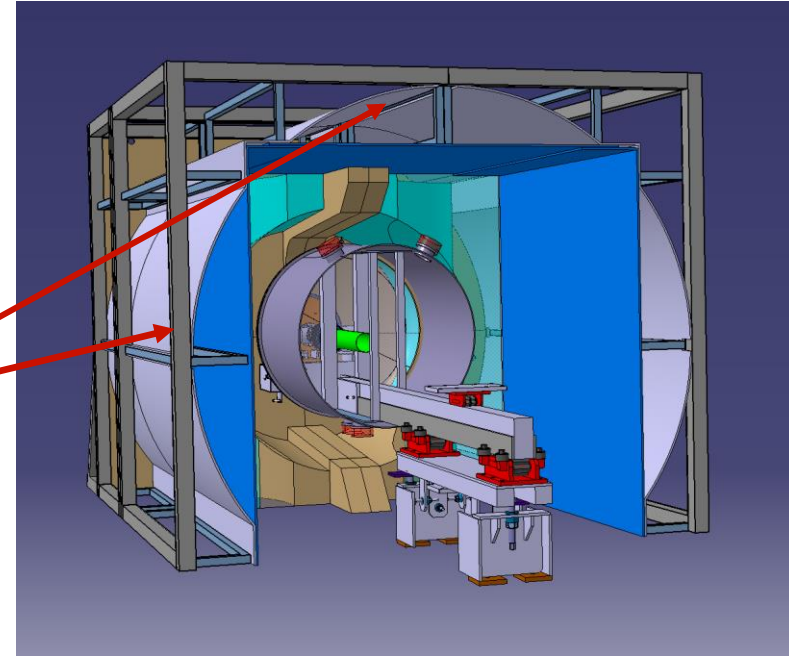
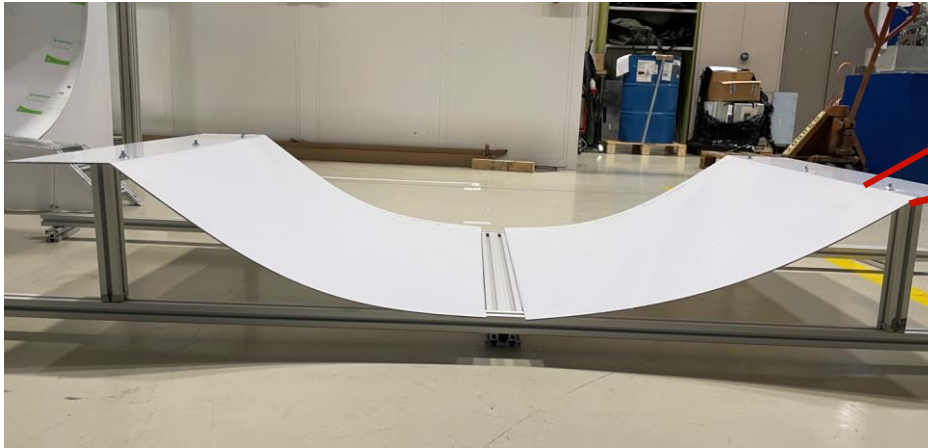
# Pictures related to finishing of CMS shielding

- Finishing: poly carbonate sheets will be painted CMS green in bldg. 904 next week.



# Other elements ready for production as well!

- e.g. ATLAS tunnel ceiling shaped with Makrolon sheets (poly carbonate)





***Thanks to everybody contributing in  
this project!***

WP12, WP15, BE-EA ....