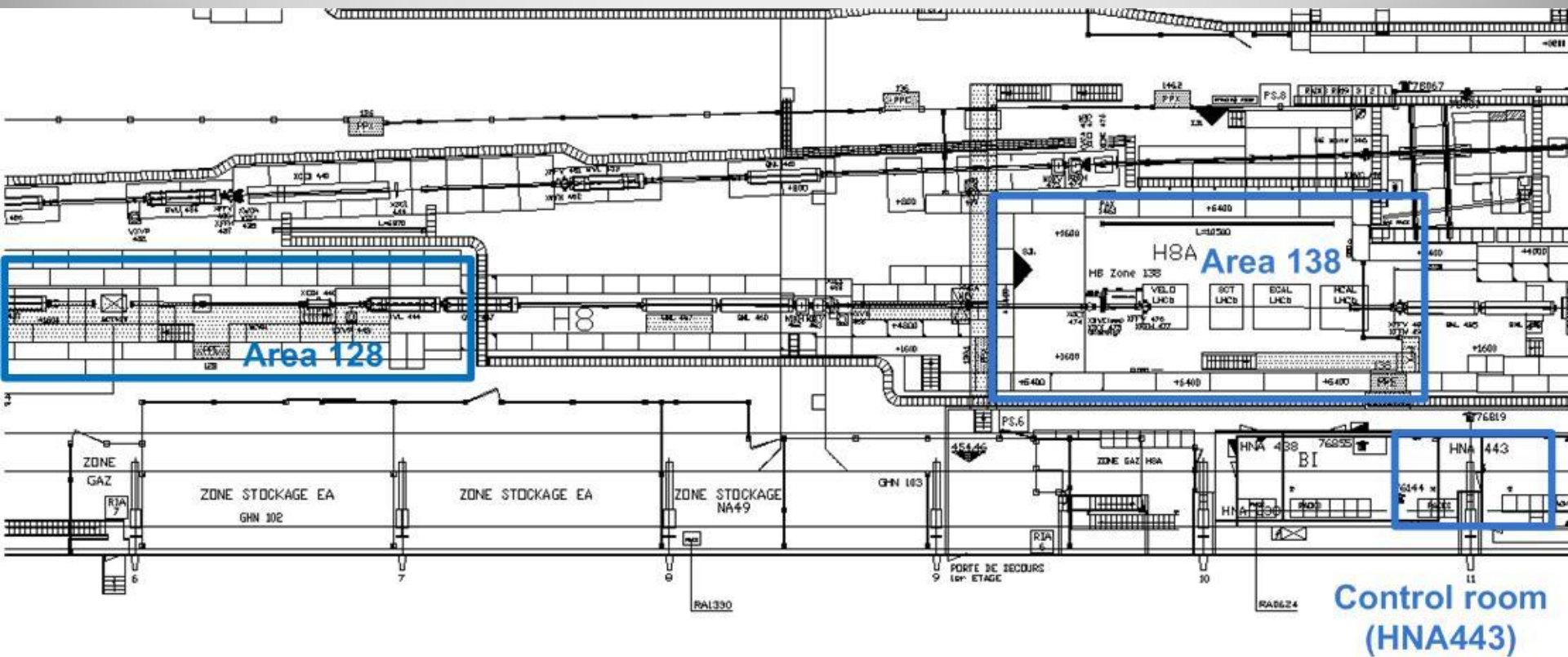




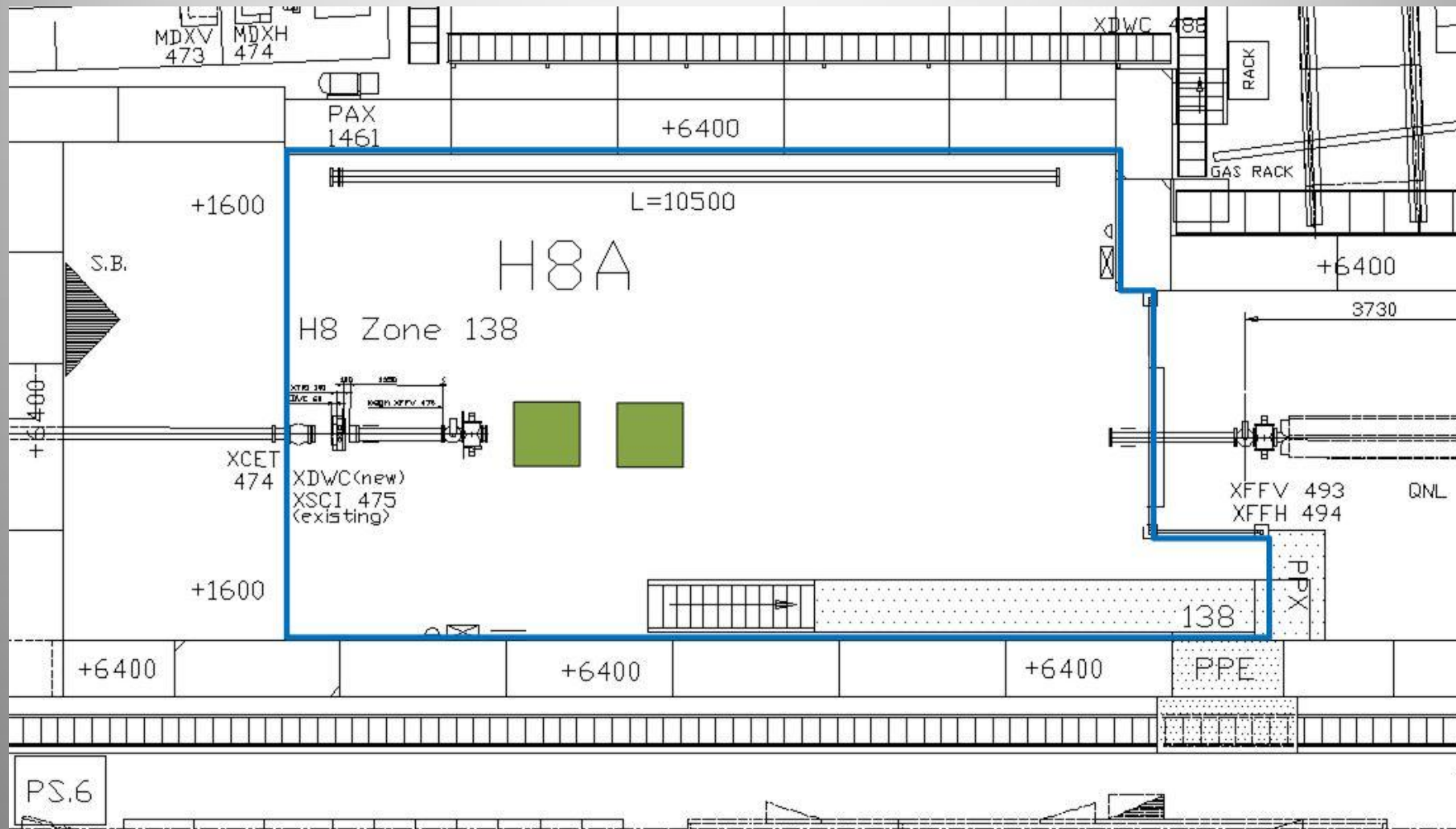
Annual Workshop on Crystal Collimation

H8 Layout and infrastructure

Bld 887: H8 beam line



Experimental Area 138



Experimental Area 138



Experimental Area 138

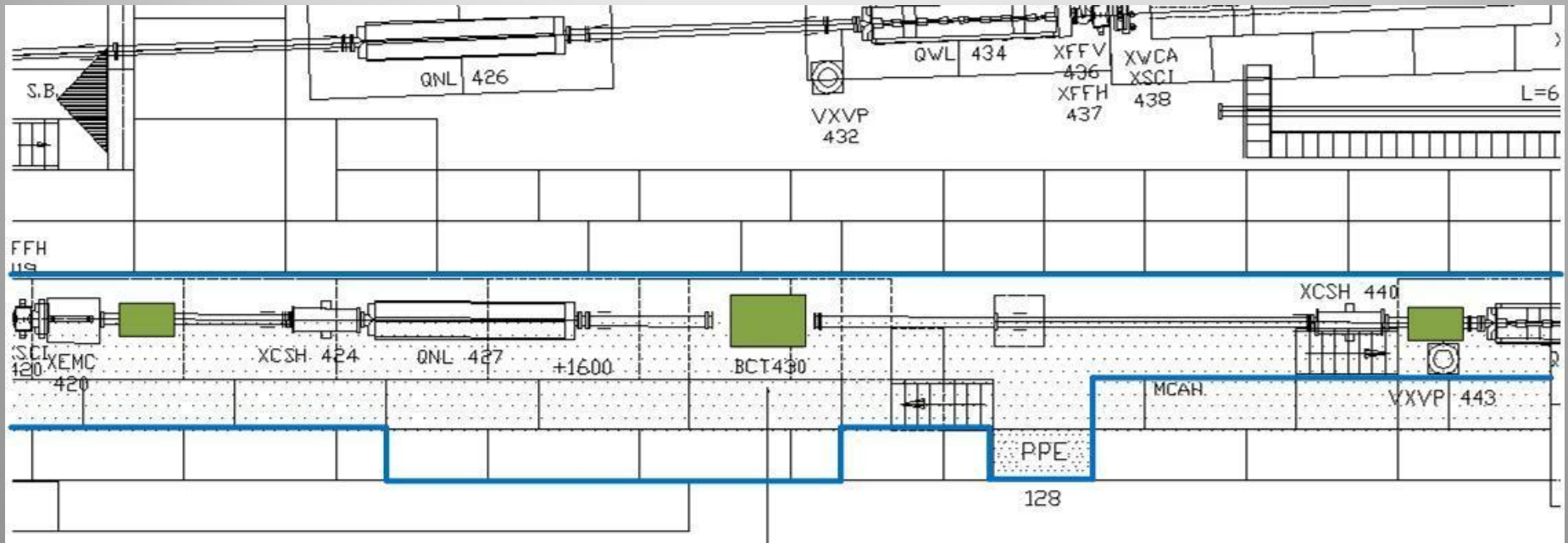
Cables from control room HNA443:

- 10 coaxial cables (BNC connectors)
- 4 HV coaxial cables (SHV connectors)
- 1 Ethernet cable (RJ45 connectors)

Services available inside the area:

- AC power 230V
- 2 Ethernet outlets

Experimental Area 128



Experimental Area 128



Experimental Area 128



Experimental Area 128

Cables available from control room HNA443

- 4x coaxial cables (BNC connectors)
- 4x HV coaxial cables (SHV connectors)
- 2x Ethernet cable (RJ45 connectors)
- 1x I2C control cable
- Several optical fibers have been installed in September 2010.
(Thanks to EN-EL-CF)
12x Multimode fibers (ST connectors)
36 single mode fibers with E2000/APC connectors

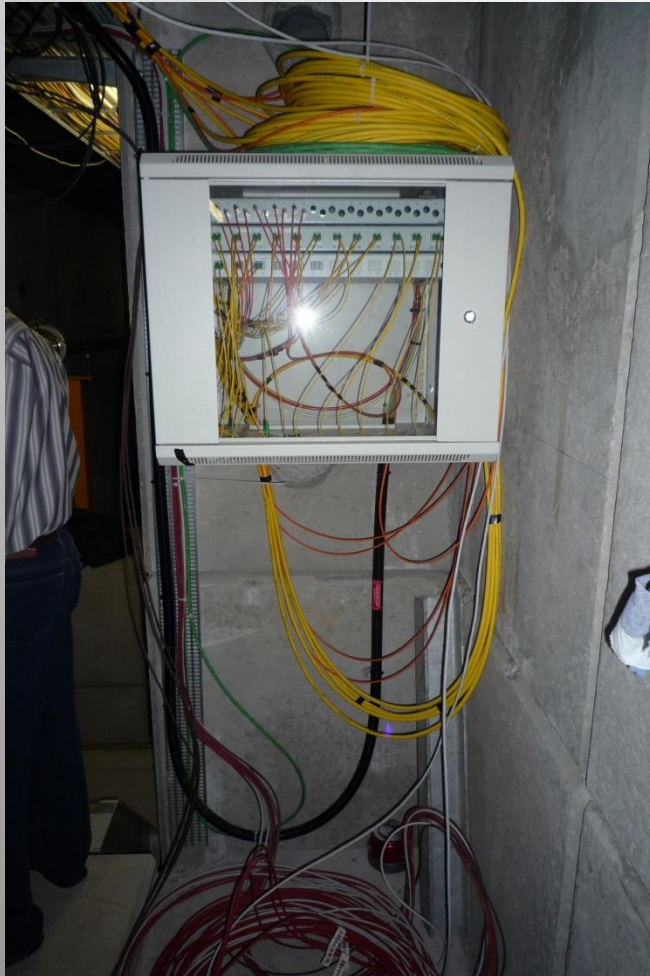
Services available inside the area:

- AC power 230V: Will be consolidated during winter shutdown
- Network: installation during winter shutdown

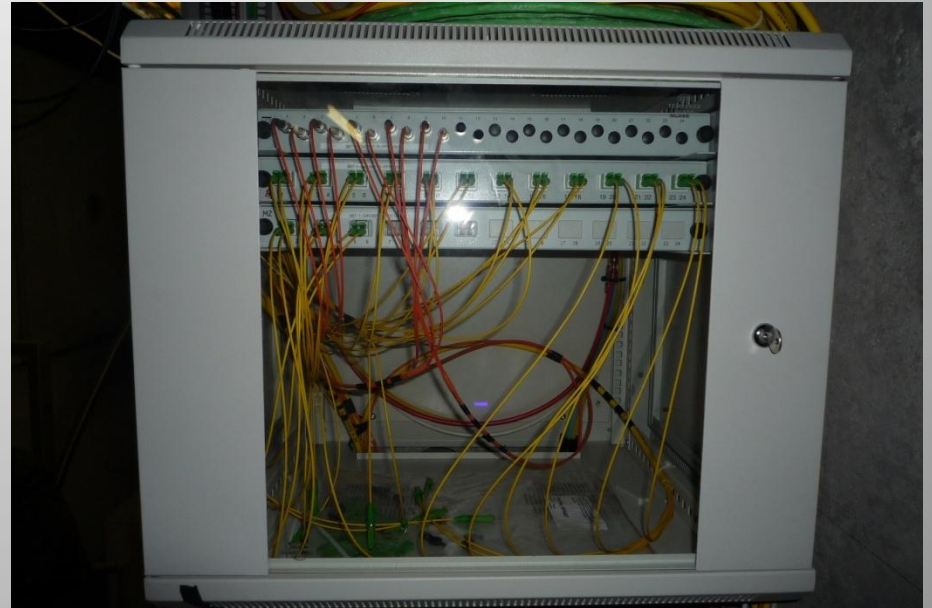
Control room HNA443



September 2010

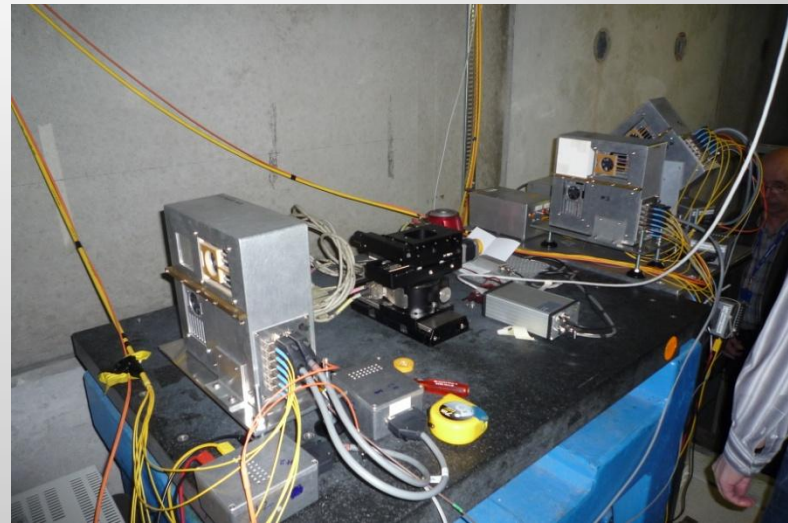


Optical fibers panel



Optical fibers panel

September 2010



Thank you !