

PT status and planning

Michael Pešek
Charles University, Prague

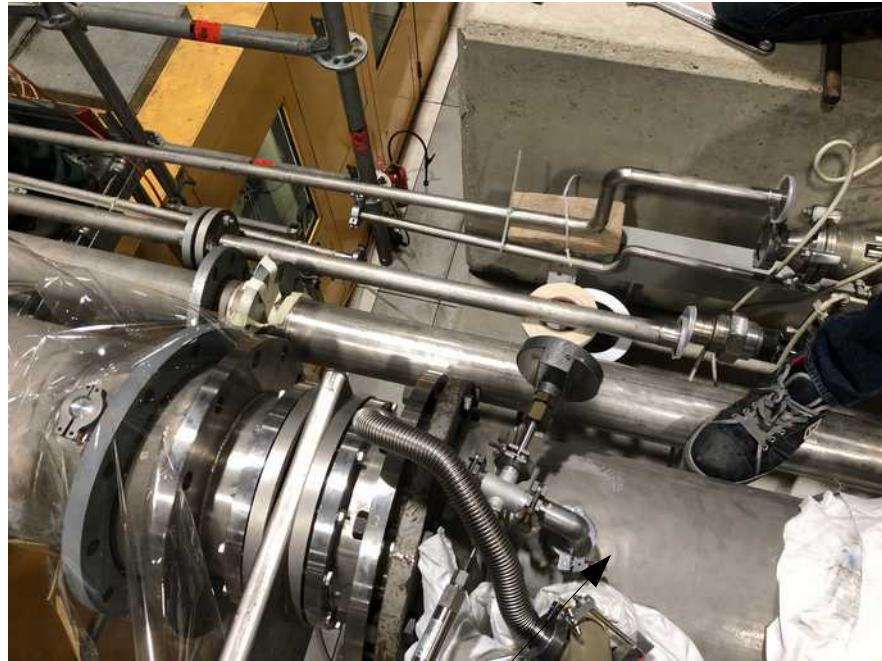
Outline

- Activities since last TB
- Planning
- Manpower

Activities since last TB

- Warming up the system
- ^3He pipe reinforcement welding week of 22nd November
- Leak detector maintenance
- ^4He pumps maintenance
- Repair gate valve control cable connector
- Exchange ^3He gate valve coil
- Lab testing of the 2 new Gunn diodes

^3He pumping line reinforcement



Disconnected all pipes on the concrete wall
To avoid possible electronics damage
by leakage current from welding



Stiffening rings welded in place

^3He pumping line leak checked after reconnection, fixed gate valve control cable
damaged during the operation

08/02/2022



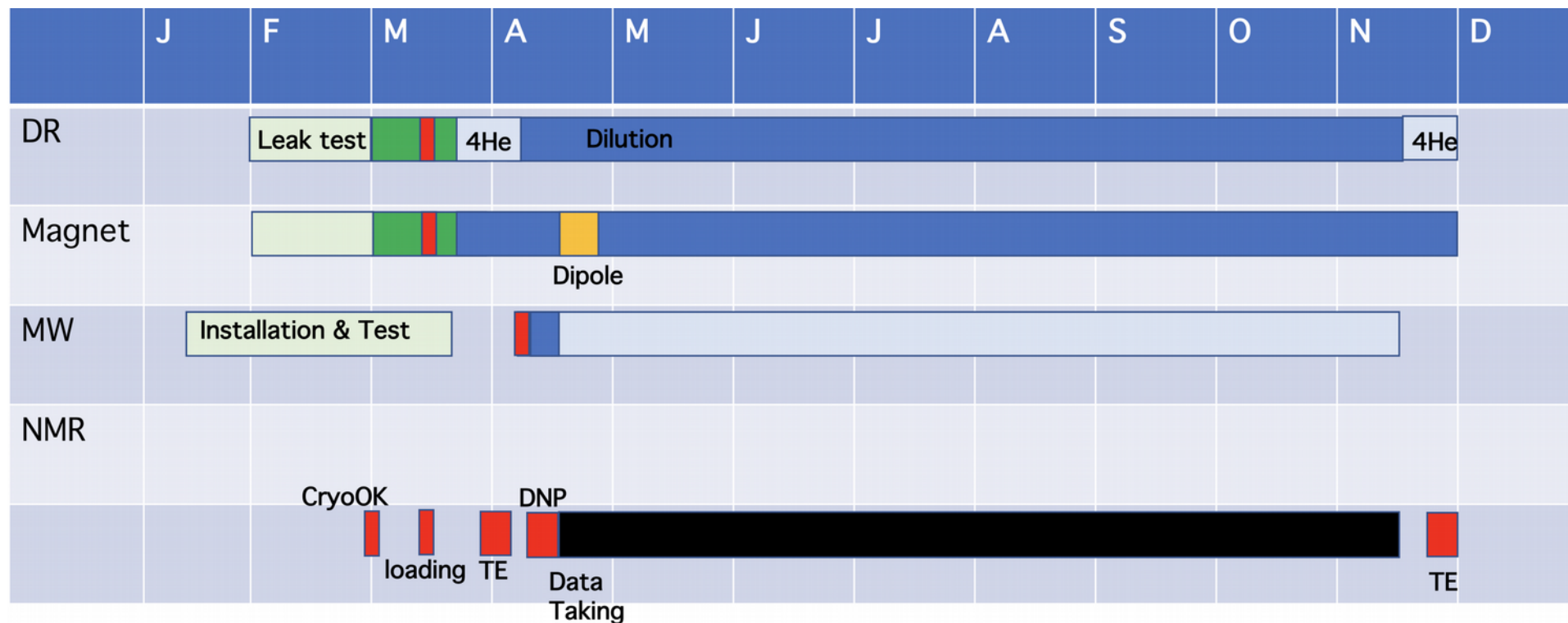
New features of the system:

- Internal reference 10MHz generator (no need for external generator)
- Control via USB/Ethernet/optical fibre
- Optical fibre/Ethernet converters to be purchased
- New control system

Activities continued

- Restart isolation vacuum pumping 2nd February
some difficulties to restart due to water pressure sensor → resolved by EP-DT (bypass)
- Exchange ³He pumps oil 3rd February
- Reconnect ⁴He pumping line (new teflon seal) 4th Feb
- Leak-check ⁴He pumps & new seal 4th Feb
- Exchange 1 ³He gas panel valve (Tino Cryolab)
- ³He pumps purging by N₂ gas – ongoing
- ³He circuit leak check - ongoing

Schedule for 2022



Preliminary planning

Loading 15/3 → possibly shift by one week due to DSO tests in 888

Manpower

	J	F	M	A	M	J	J	A	S	O	N	D
Michael	█	█	█	█	█	█	█	█	█	█	█	█
Christophe	█	█	█	█	█	█	█	█	█	█	█	█
Gerhard			█			█					█	
Jaakko			█	█							█	
Triloki		█	█	█	█							
Postdoc				█	█	█	█	█	█	█	█	█
Takahiro			█				█					
J. Student			█					█	█			
Nori	█	█	█	█	█	█	█	█	█	█	█	█
Dubna				█	█	█						
D.Student								█	█	█		

Final confirmation expected for Jaakko

Discussion ongoing with Dubna to fix the presence of experts

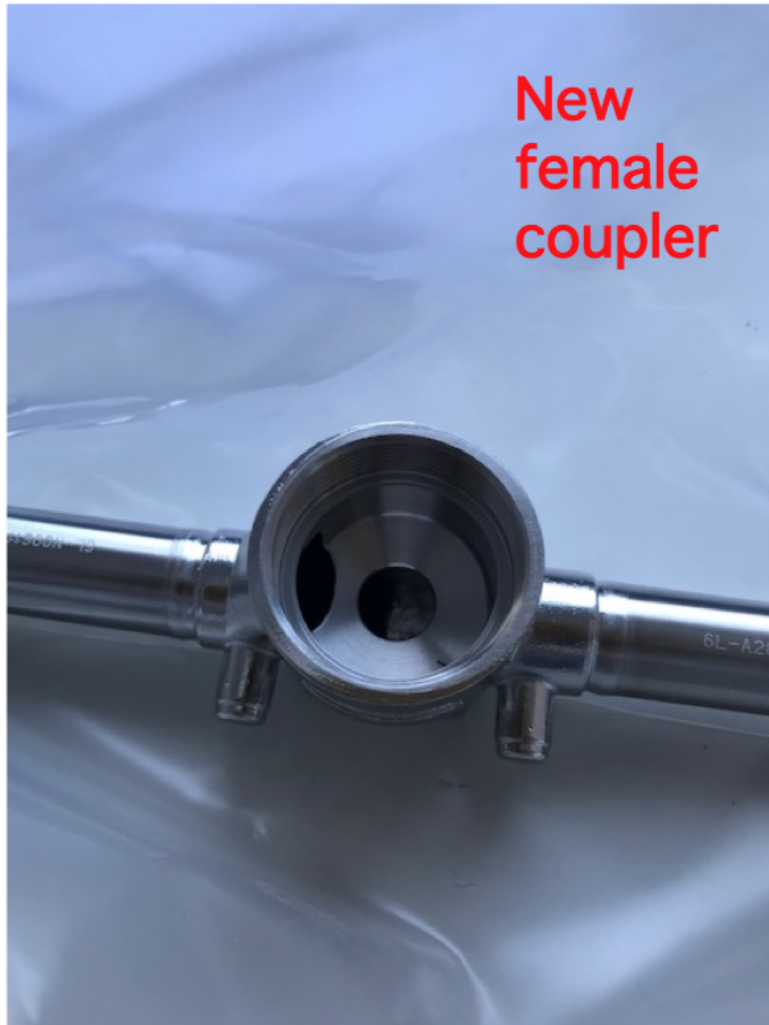
Yamagata presence might be affected by travel restrictions

Conclusion

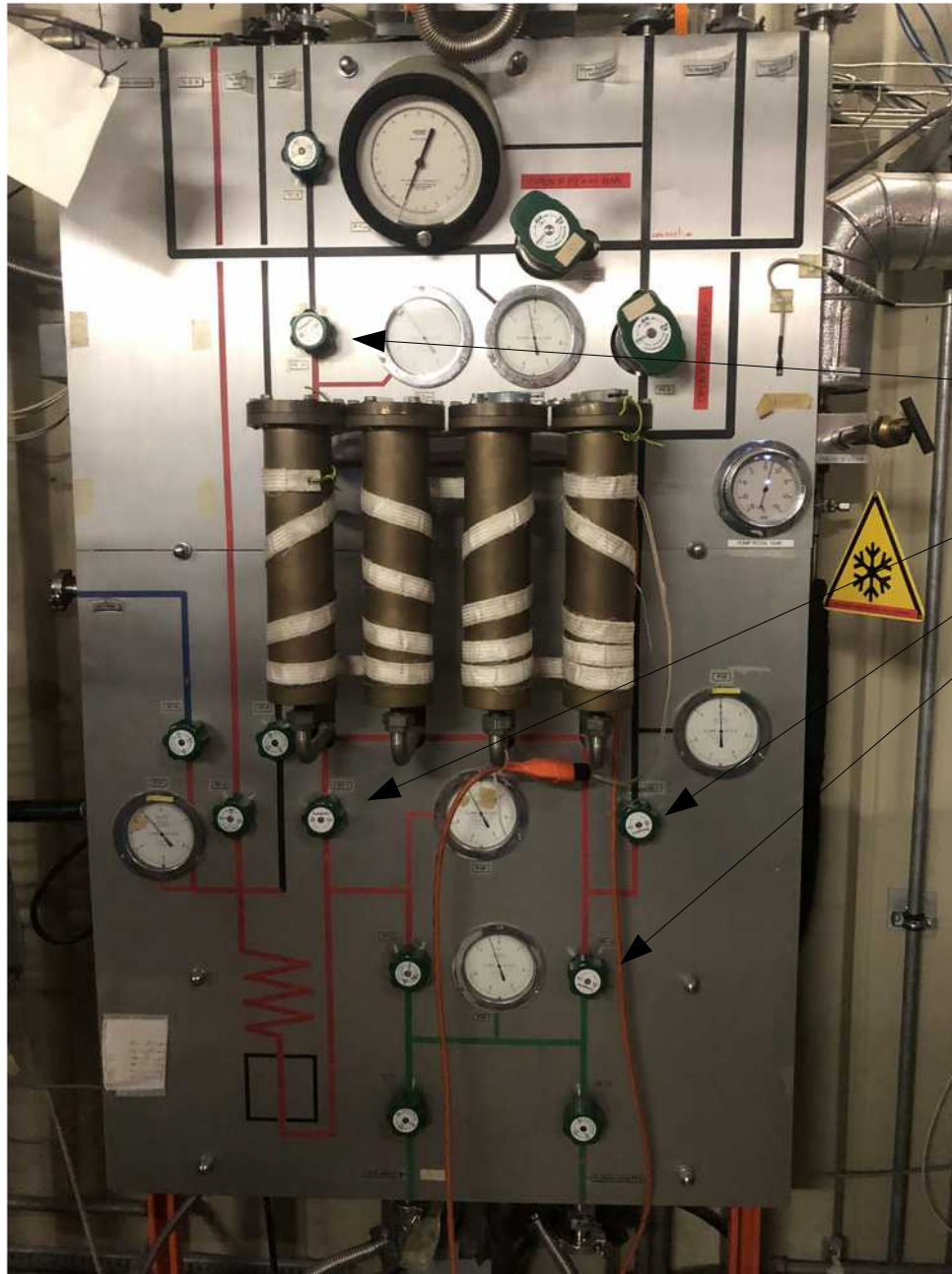
- PT preparation in full swing
- Schedule (well) defined
- Manpower availability is essential!

Spare

3He valves



3He gas panel



Replaced