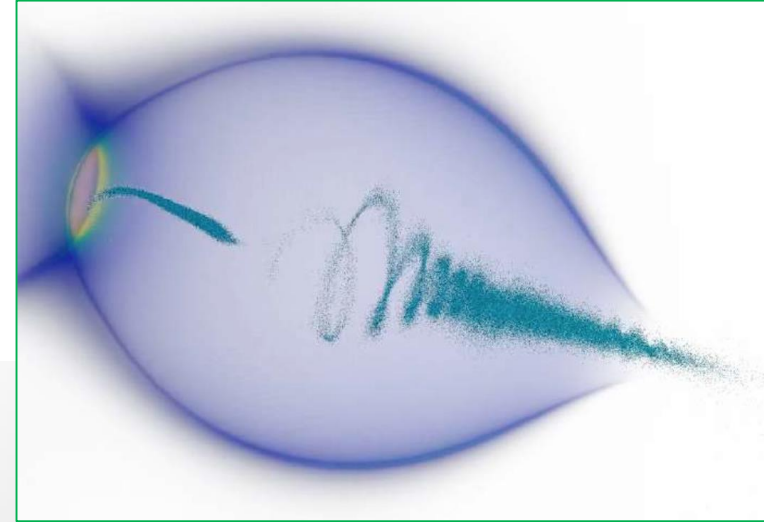
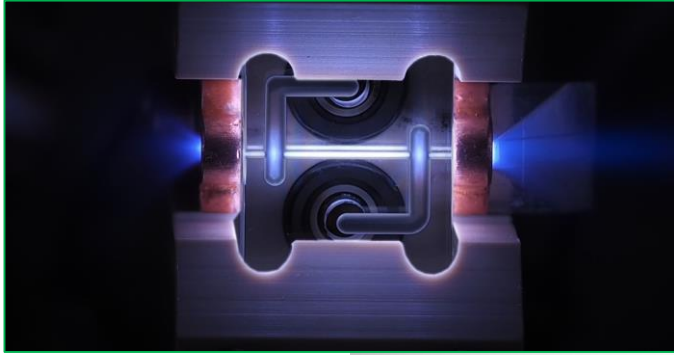
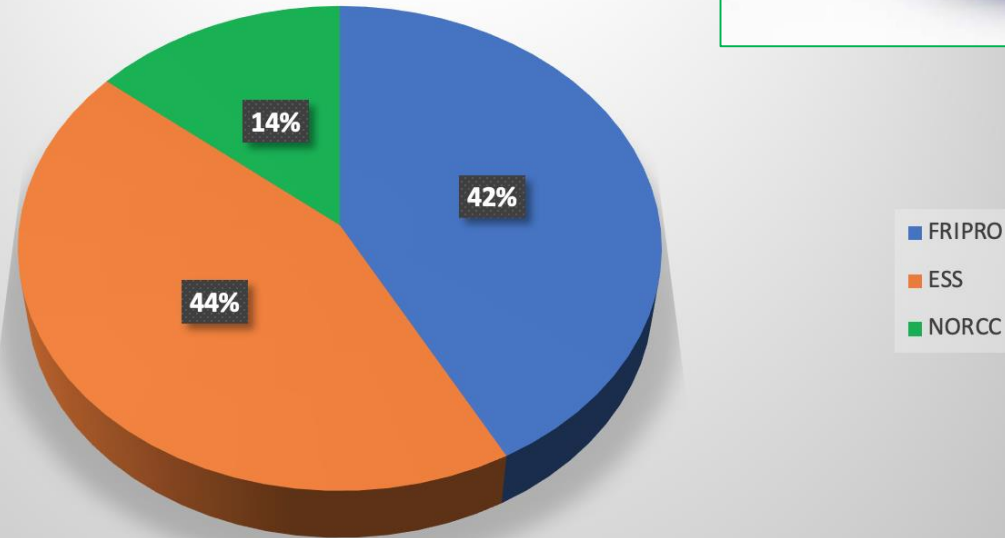


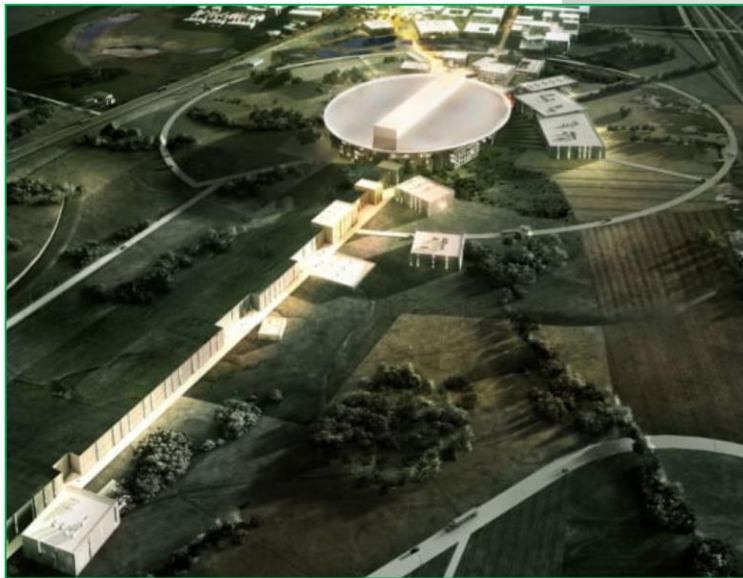
NorCC: Current and future particle accelerator research



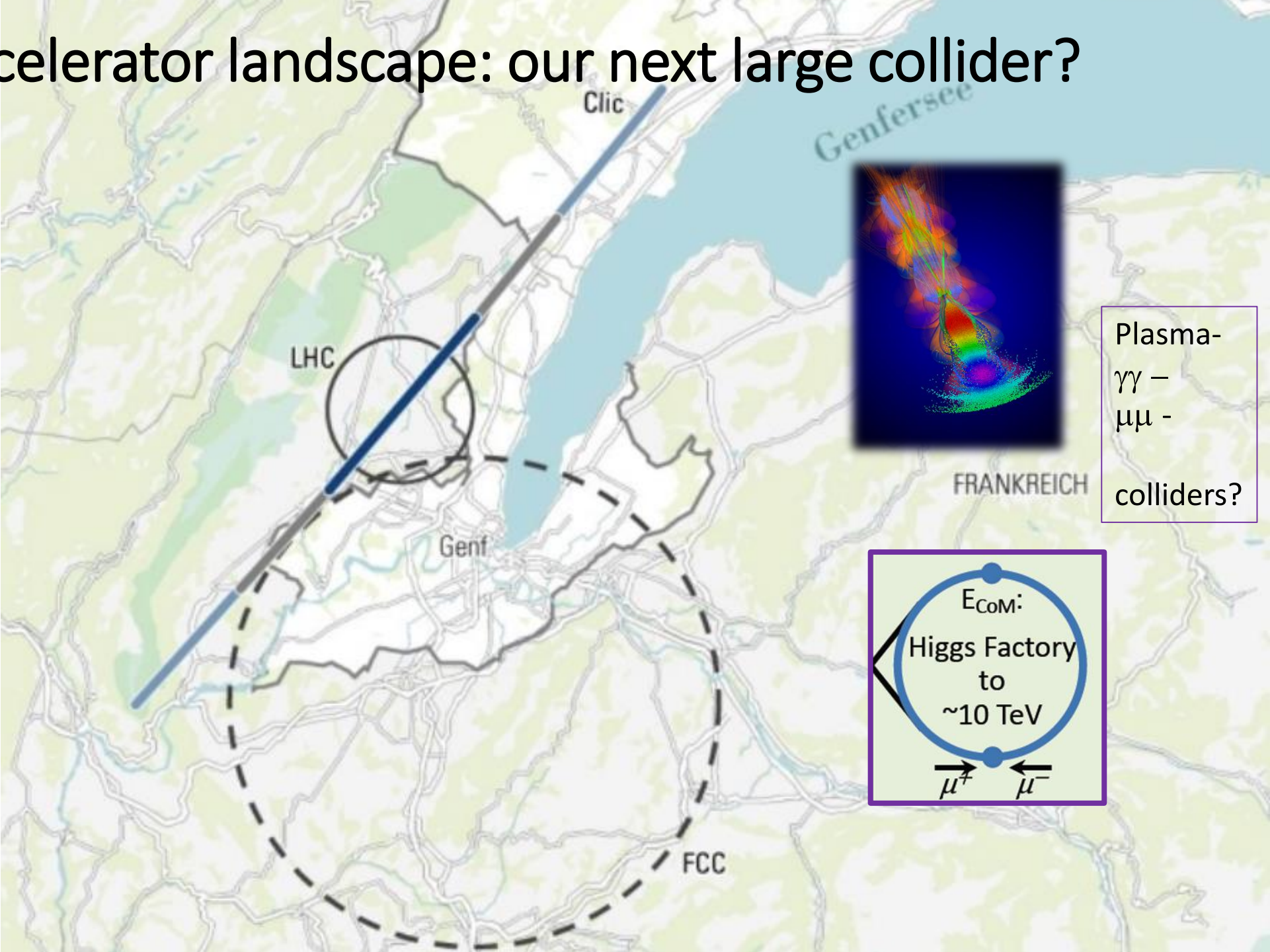
CURRENT YEARLY FUNDING



+ contributions through the CERN Technical/Doctorate programmes (NorCC technology activity)



HEP accelerator landscape: our next large collider?



Clic

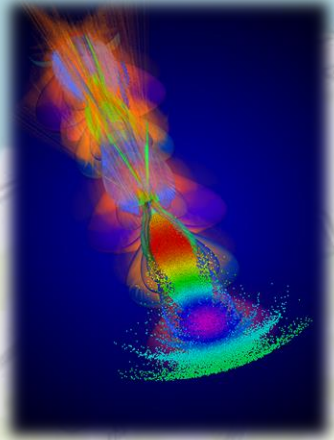
Genfersee

LHC

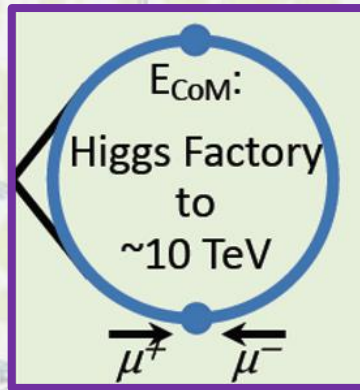
Genf

FRANKREICH

FCC



Plasma-
 $\gamma\gamma$ -
 $\mu\mu$ -
colliders?



Applications

