

Effective Dirac neutrino masses and baryogenesis

with gauged Baryon number



UNIVERSIDAD DE ANTIOQUIA
1403

Diego Restrepo

Instituto de Física
Universidad de Antioquia
Phenomenology Group
<http://gfif.udea.edu.co>



Focus on

[arXiv:2205.05762](https://arxiv.org/abs/2205.05762)

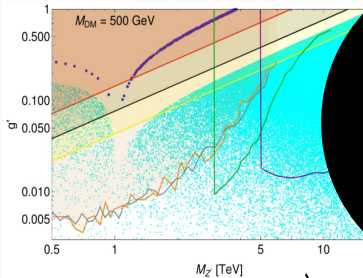
In collaboration with

Andrés Rivera (UdeA), Walter Tangarife (Loyola University Chicago)

Electroweak baryogenesis

- Standard model (SM) $m_h \sim 125$ GeV. 😞
- Beyond the SM: Source of CP contains fields charged under SM
→ too large electric dipole moments 😞

- Inert SM-singlet complex scalar field which acquires vev with temperature to have strong electroweak phase transition 😊
- CP violation (CPV) triggered in dark sectors through SM gauge singlets
→ CPV Yukawa between SM-singlet complex scalar and SM-singlet quiral fermions 😊

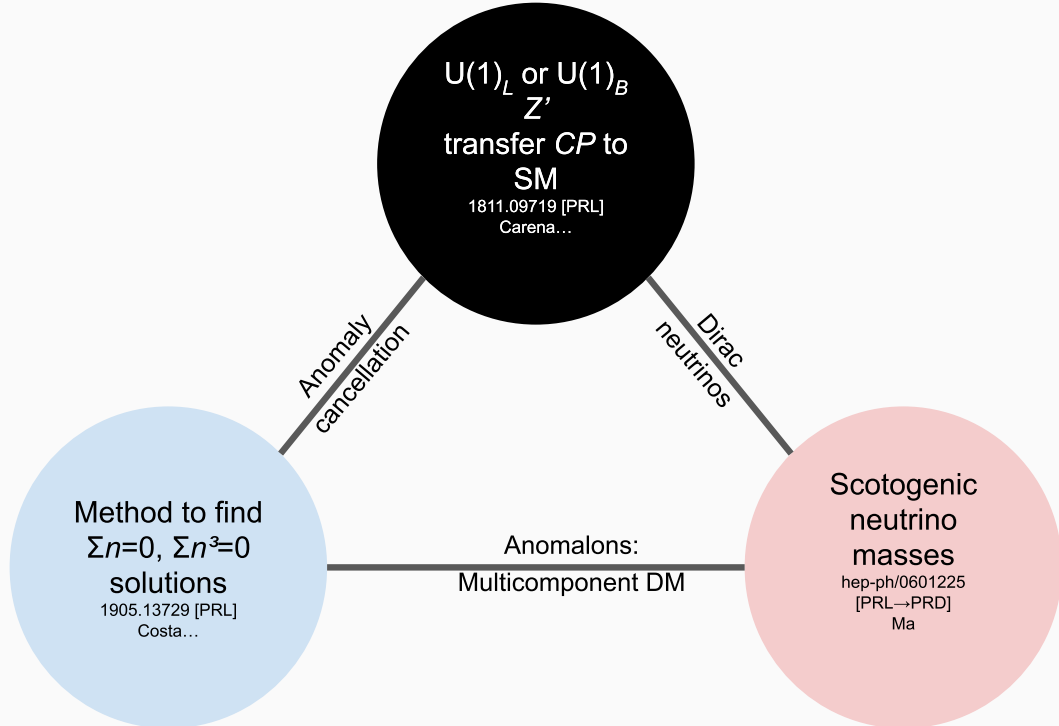


$U(1)_L$ or $U(1)_B$
 Z'
 transfer CP to
 SM
 1811.09719 [PRL]
 Carena...

Anomaly
cancellation

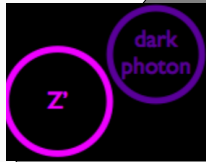
Dirac
neutrinos

Anomalons:
DM



Dark sectors







$$F_{\mu\nu} V^{\mu\nu}$$

Local $U(1)_X$

$$\mathcal{L} = -\frac{1}{4} V_{\mu\nu} V^{\mu\nu} + i \sum_i \chi_i \not{D} \chi_i - h(\chi_1 \chi_2 \Phi + \text{h.c.})$$

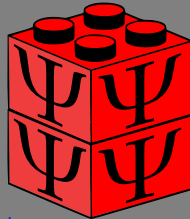
Anomalons: SM-singlet Dirac fermion

dark matter $m_\psi = h\langle\Phi\rangle$

LHC production:

Gauged Symmetry: $X \rightarrow B: q\bar{q} \rightarrow Z' \rightarrow \text{jets}$

Gauged Symmetry: $X \rightarrow L:$



$$\bar{\Psi}\Psi = \chi_1 \chi_2 + \chi_1^\dagger \chi_2^\dagger \rightarrow \chi_\alpha \chi_\beta \Phi^{(*)},$$

$$\alpha = 1, \dots, N' \rightarrow N' > 4$$



$$F_{\mu\nu} V^{\mu\nu}$$

Local $U(1)_X$

$$\mathcal{L} = -\frac{1}{4} V_{\mu\nu} V^{\mu\nu} + i \sum_i \chi_i \not{\partial} \chi_i - h(\chi_1 \chi_2 \Phi + \text{h.c.})$$

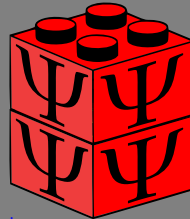
Anomalons: SM-singlet Dirac fermion

dark matter $m_\Psi = h\langle\Phi\rangle$

LHC production:

Gauged Symmetry: $X \rightarrow B: q\bar{q} \rightarrow Z' \rightarrow \text{jets}$

Gauged Symmetry: $X \rightarrow L:$



$$\bar{\Psi}\Psi = \chi_1\chi_2 + \chi_1^\dagger\chi_2^\dagger \rightarrow \chi_\alpha\chi_\beta\Phi^{(*)},$$

$$\alpha = 1, \dots, N' \rightarrow N' > 4$$



$$F_{\mu\nu} V^{\mu\nu}$$

Local $U(1)_X$

$$\mathcal{L} = -\frac{1}{4} V_{\mu\nu} V^{\mu\nu} + i \sum_i \chi_i \bar{\chi}_i \not{D} \chi_i - h(\chi_1 \chi_2 \Phi + \text{h.c.})$$

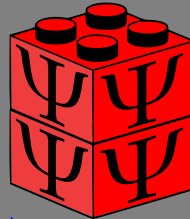
Anomalons: SM-singlet Dirac fermion

dark matter $m_\Psi = h\langle\Phi\rangle$

LHC production:

Gauged Symmetry: $X \rightarrow B: q\bar{q} \rightarrow Z' \rightarrow \text{jets}$

Gauged Symmetry: $X \rightarrow L:$



$$\bar{\Psi}\Psi = \chi_1 \chi_2 + \chi_1^\dagger \chi_2^\dagger \rightarrow \chi_\alpha \chi_\beta \Phi^{(*)},$$

$$\alpha = 1, \dots, N' \rightarrow N' > 4$$



$$F_{\mu\nu} V^{\mu\nu}$$

Local $U(1)_X$

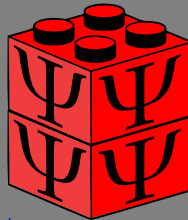
$$\mathcal{L} = -\frac{1}{4} V_{\mu\nu} V^{\mu\nu} + i \sum_i \chi_i \bar{\chi}_i \not{D} \chi_i - y (\chi_1 \chi_2 S + \text{h.c.})$$

Anomalons: SM-singlet Dirac fermion
 CP violation Yukawa y

LHC production:

Gauged Symmetry: $X \rightarrow B: q\bar{q} \rightarrow Z' \rightarrow \text{jets}$

Gauged Symmetry: $X \rightarrow L:$



$$\bar{\Psi}\Psi = \chi_1 \chi_2 + \chi_1^\dagger \chi_2^\dagger \rightarrow \chi_\alpha \chi_\beta \Phi^{(*)},$$

$$\alpha = 1, \dots, N' \rightarrow N' > 4$$

Standard model extended with $U(1)_{\mathcal{X}=L \text{ or } B}$ gauge symmetry

Fields	$SU(2)_L$	$U(1)_Y$	$U(1)_{\mathcal{X}=B \text{ or } L}$
Q_i^\dagger	2	-1/6	Q
d_{Ri}	1	-1/2	d
u_{Ri}	1	+2/3	u
L_i^\dagger	2	+1/2	L
e_{Ri}	1	-1	e
H	2	1/2	$h = 0$
χ_α	1	0	z_α
$(L'_L)^\dagger$	2	1/2	$-\mathcal{X}'$
L''_R	2	-1/2	\mathcal{X}''
e'_R	1	-1	\mathcal{X}'
$(e''_L)^\dagger$	1	1	$-\mathcal{X}''$
Φ	1	0	ϕ
S	1	0	s

Table 1: A minimal set of new fermion content: $L = e = 0$ for $\mathcal{X} = B$. Or $Q = u = d = 0$ for $\mathcal{X} = L$.
 $i = 1, 2, 3, \alpha = 1, 2, \dots, N'$

Effective Dirac neutrino mass operator

$$\chi_1 \rightarrow \nu_{R1}, \dots, \chi_{N_\nu} \rightarrow \nu_{RN_\nu}, \quad 2 \leq N_\nu \leq 3, \quad (1)$$

$$\mathcal{L}_{\text{eff}} = h_\nu^{\alpha i} (\nu_{R\alpha})^\dagger \epsilon_{ab} L_i^a H^b \left(\frac{\Phi^*}{\Lambda} \right)^\delta + \text{H.c.}, \quad \text{with } i = 1, 2, 3,$$

S is the complex singlet scalar responsible for the SSB of the anomaly-free gauge symmetry with D or X -charge

$$\phi = -(\nu + L)/\delta, \quad (2)$$

Anomaly cancellation I

The anomaly-cancellation conditions on $[SU(3)_c]^2 U(1)_X$, $[SU(2)_L]^2 U(1)_X$, $[U(1)_Y]^2 U(1)_X$, allow us to express three of the X -charges in terms of the others

$$u = -e - \frac{2}{3}L - \frac{1}{9}(x' - x''), \quad d = e + \frac{4}{3}L - \frac{1}{9}(x' - x''), \quad Q = -\frac{1}{3}L + \frac{1}{9}(x' - x''), \quad (3)$$

while the $[U(1)_X]^2 U(1)_Y$ anomaly condition reduces to

$$(e + L)(x' - x'') = 0. \quad (4)$$

- Previously: $x' = x''$
- We choose instead ($h = 0$):

$$e = -L, \quad (5)$$

so that (L is still a free parameter)

$$Q = -u = -d = -\frac{1}{3}L + \frac{1}{9}(x' - x''). \quad (6)$$

If $L = 0 \rightarrow U(1)_B$

Anomaly cancellation II

The gravitational anomaly, $[\text{SO}(1,3)]^2 \text{U}(1)_Y$, and the cubic anomaly, $[\text{U}(1)_X]^3$, can be written as the following system of Diophantine equations, respectively,

$$\sum_{\alpha=1}^N z_{\alpha} = 0, \quad \sum_{\alpha=1}^N z_{\alpha}^3 = 0, \quad (7)$$

where $N = N' + 5$ and

$$\begin{aligned} z_{N'+1} &= -x', & z_{N'+2} &= x'', \\ z_{N'+2+i} &= L, \quad i = 1, 2, 3 \end{aligned} \quad (8)$$

→

$$9Q = - \sum_{\alpha=N'+1}^{N'+5} z_{\alpha} = -x' + x'' + L + L + L, \quad (9)$$

$$Q = 0 \rightarrow \text{U}(1)_L$$

September 24, 2021

Dataset Open Access

Set of N integers between -30 and 30 with sum and cubic sum to zero for 4<N<13

Diego Restrepo

Anomalies

Solutions obtained with the python package: `anomalies` based on the method to find anomaly free solutions of the standard model extended with an Abelian Dark Symmetry with N right-handed singlet chiral fields described in [arXiv:1905.13729 \[PRL\]](#):

Data scheme

- 'l': integer lists → input to obtain the 'solution' by using the `anomalies` package
- 'k': integer lists → input to obtain the 'solution' by using the `anomalies` package

- 'solution': list → of integers, Z_i which satisfy $\sum_{i=1}^N z_i = 0$ and $\sum_{i=1}^N z_i^3 = 0$.

- 'n': integer → number of integers in 'solution', N.

USAGE

#Example of JSON file usage in Python with pandas (see also json module)

```
>>> import pandas as pd
>>> df=pd.read_json('solutions.json')
>>> df[:2]
```

	1	k	solution	gcd	n
0	[1, 2]	[0, -3]	[1, 5, -7, -8, 9]	1	5
1	[-2, -1]	[0, -1]	[2, 4, -7, -9, 10]	1	5

Data:

390074 solutions with $5 \leq N \leq 12$ integers until |32| [JSON]

17

views

4

downloads

[See more details...](#)

Indexed in



Publication date:

September 24, 2021

DOI:

DOI 10.5281/zenodo.5526707

Keyword(s):

- Anomaly free
- Diophantine equations
- Abelian symmetry
- Gauge Symmetry

License (for files):

[Creative Commons Attribution 4.0 International](#)

Versions

Version 1

Sep 24, 2021

10.5281/zenodo.5526707

- $L = 0$

$(5, 5, -3, -2, 1, -6)$

$U(1)_B$ selection

- $L = 0$
- Effective neutrino mass: $\phi = -\nu = -5$

$$(5, 5, -3, -2, 1, -6)$$

- $L = 0$
- Effective neutrino mass: $\phi = -\nu = -5$
- Electroweak-scale vector-like fermions:
 $(L'_L)^\dagger L''_R \Phi^* \rightarrow x' = -1, x'' = 6$

$$(5, 5, -3, -2, 1, -6)$$

- $L = 0$
- Effective neutrino mass: $\phi = -\nu = -5$
- Electroweak-scale vector-like fermions:
 $(L'_L)^\dagger L''_R \Phi^* \rightarrow x' = -1, x'' = 6$
- Dirac-fermionic DM: $(\chi_L)^\dagger \chi''_R \Phi^* \rightarrow z_3 = -3, z_4 = -2$

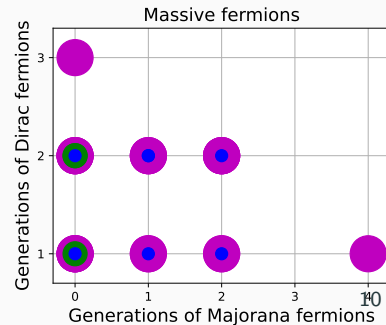
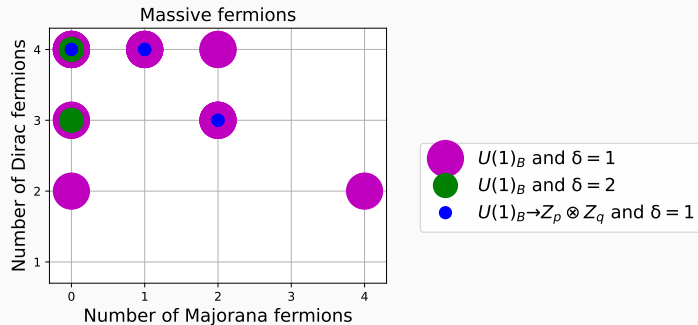
$$(5, 5, -3, -2, 1, -6)$$

$U(1)_B$ selection

- $L = 0$
- Effective neutrino mass: $\phi = -\nu = -5$
- Electroweak-scale vector-like fermions:
 $(L'_L)^\dagger L''_R \Phi^* \rightarrow x' = -1, x'' = 6$
- Dirac-fermionic DM: $(\chi_L)^\dagger \chi''_R \Phi^* \rightarrow z_3 = -3, z_4 = -2$

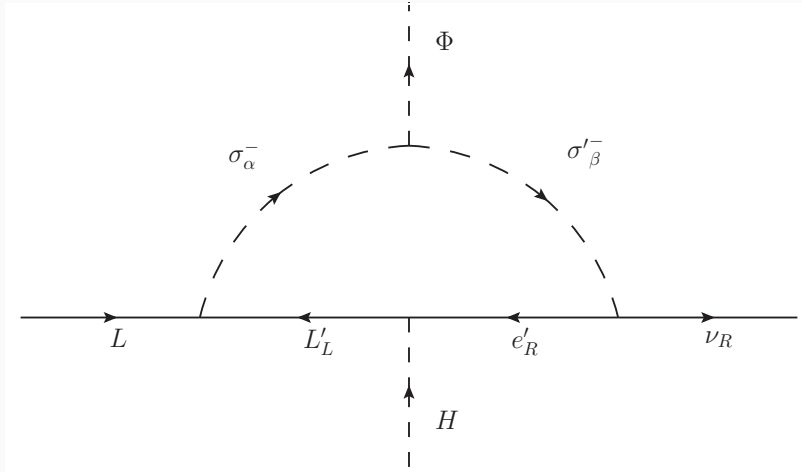
$(5, 5, -3, -2, 1, -6)$

959 solutions from $\sim 400,000$



Scotogenic realization

Any realization which does not affect anomaly cancellation is allowed

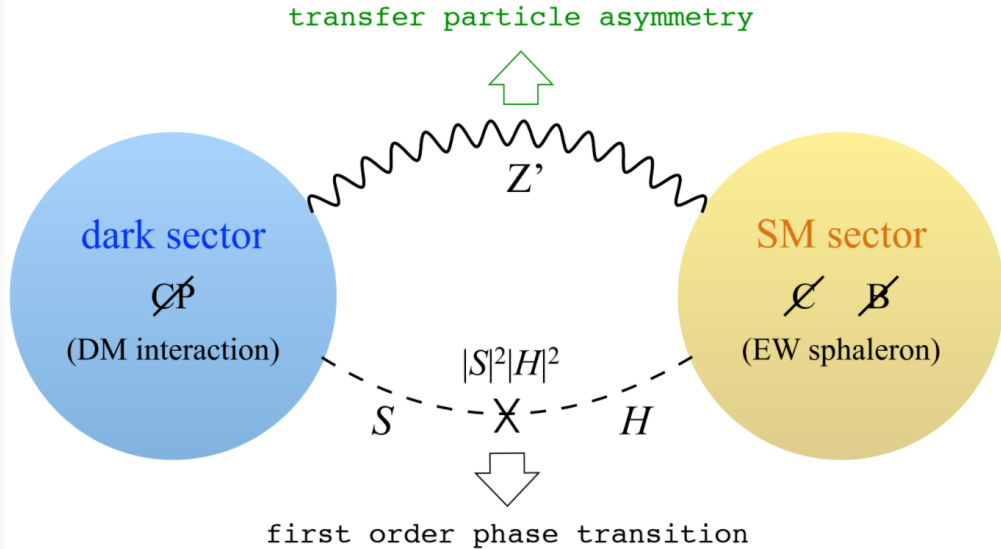


Field	$SU(2)_L$	$U(1)_Y$	$U(1)_B$
u_{Ri}	1	2/3	$u = 1/3$
d_{Ri}	1	-1/3	$d = 1/3$
$(Q_i)^\dagger$	2	-1/6	$Q = -1/3$
$(L_i)^\dagger$	2	1/2	$L = 0$
e_R	1	-1	$e = 0$
$(L'_L)^\dagger$	2	1/2	$-x' = -3/5$
e'_R	1	-1	$x' = 3/5$
L''_R	2	-1/2	$x'' = 18/5$
$(e'_L)^\dagger$	1	1	$-x'' = -18/5$
$\nu_{R,1}$	1	0	-3
$\nu_{R,2}$	1	0	-3
χ_R	1	0	6/5
$(\chi_L)^\dagger$	1	0	9/5
H	2	1/2	0
S	1	0	3
Φ	1	0	3
σ_α^-	1	1	3/5
σ'^-_α	1	-1	-12/5

Table 2: $i = 1, 2, 3$, $\alpha = 1, 2$ normalized baryon number charges with a global factor $-5/3$.

Baryogenesis

Dark sector baryogenesis



CP violation occurs in the dark sector and is transmitted to SM sector by the new Z' gauge boson.

- High scale fields: Φ , ($\langle\Phi\rangle \rightarrow L'_L, L''_R, e'_L, e''_R$: EW-scale vector-like anomalous)
- Electroweak scale (EW) fields: $Z'_\mu, S, \chi_L, \chi_R$
- CP-violation

$$\begin{aligned} \mathcal{L}_{\text{Dirac DM}} &= h(\chi_L)^\dagger \chi_R \Phi^* + y(\chi_L)^\dagger \chi_R S^* + \text{h.c.}, & y \in \mathbb{C} \\ &\supset \left(m_\chi + |y| e^{i\theta} |S| \right) (\chi_L)^\dagger \chi_R + \text{h.c.} \end{aligned}$$

- CP-violation Portal

$$\mathcal{L}_{\text{anomalous}} \supset g' Z'_\mu \left[3\bar{\chi}_L \gamma^\mu \chi_L - 2\bar{\chi}_R \gamma^\mu \chi_R + \bar{Q}_i \gamma^\mu Q_i + \bar{q}_{Ri} \gamma^\mu q_{Ri} \right]$$

- Strong electroweak phase transition (EWPT) portal

$$\mathcal{L}_{\text{first order EWPT}} \supset -\lambda_{SH} H^\dagger H S^* S.$$

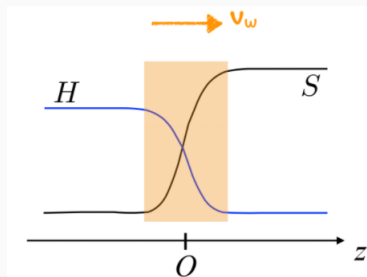
First-order phase transition: Effective potential ($T \neq 0$)

$h = H/\sqrt{2}$, $s = |S|$ with vevs: $v(T)$ and $w(T)$ such that $v(T_c) = w(T_c)$

$$V_T(h, s) = \frac{\lambda_H v_c^4}{4} \left(\frac{h^2}{v_c^2} + \frac{s^2}{w_c^2} - 1 \right)^2 + \frac{\lambda_H v_c^2}{m_{S,c}^2 w_{0,c}^4} h^2 s^2 + (T^2 - T_c^2)(c_h h^2 + c_s s^2), \quad (10)$$

where

$$c_h = \frac{1}{48} (9g_2^2 + 3g_1^2 + 12y_t^2 + 24\lambda_H + \lambda_{HS}), \quad c_s = \frac{1}{12} (3\lambda_S + 2\lambda_{HS}). \quad (11)$$



First-order phase transition: Effective potential ($T \neq 0$)

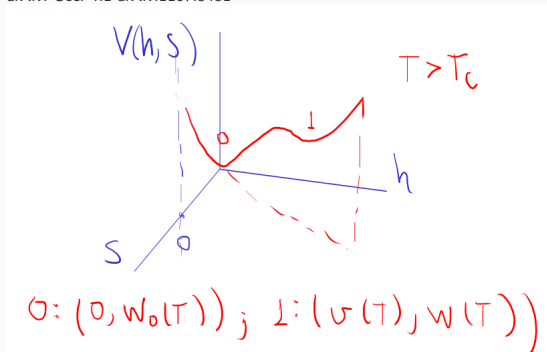
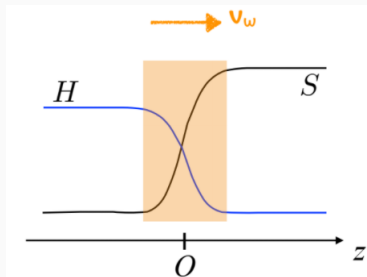
$h = H/\sqrt{2}$, $s = |S|$ with vevs: $v(T)$ and $w(T)$ such that $v(T_c) = w(T_c)$

$$V_T(h, s) = \frac{\lambda_H V_c^A}{4} \left(\frac{h^2}{v_c^2} + \frac{s^2}{w_c^2} - 1 \right)^2 + \frac{\lambda_H V_c^2}{m_{s,c}^2 w_{0,c}^4} h^2 s^2 + (T^2 - T_c^2)(c_h h^2 + c_s s^2), \quad (10)$$

where

$$c_h = \frac{1}{48} (9g_2^2 + 3g_1^2 + 12y_t^2 + 24\lambda_H + \lambda_{HS}), \quad c_s = \frac{1}{12} (3\lambda_S + 2\lambda_{HS}). \quad (11)$$

arXiv: Sec. 4.1 arXiv:1107.5451



First-order phase transition: Effective potential ($T \neq 0$)

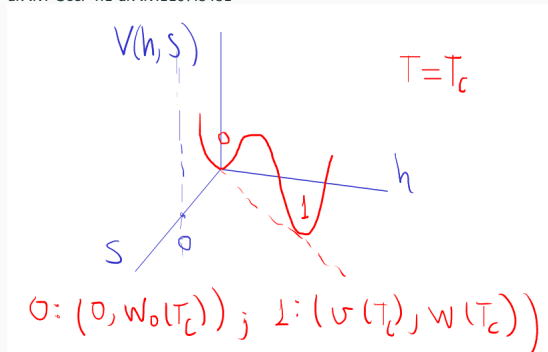
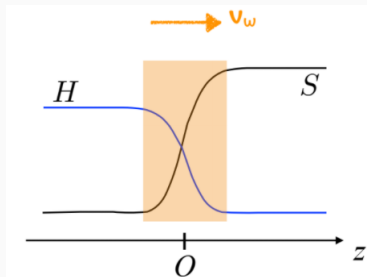
$h = H/\sqrt{2}$, $s = |S|$ with vevs: $v(T)$ and $w(T)$ such that $v(T_c) = w(T_c)$

$$V_T(h, s) = \frac{\lambda_H v_c^4}{4} \left(\frac{h^2}{v_c^2} + \frac{s^2}{w_c^2} - 1 \right)^2 + \frac{\lambda_H v_c^2}{m_{s,c}^2 w_{0,c}^4} h^2 s^2 + (T^2 - T_c^2)(c_h h^2 + c_s s^2), \quad (10)$$

where

$$c_h = \frac{1}{48} (9g_2^2 + 3g_1^2 + 12y_t^2 + 24\lambda_H + \lambda_{HS}), \quad c_s = \frac{1}{12} (3\lambda_S + 2\lambda_{HS}). \quad (11)$$

arXiv: Sec. 4.1 arXiv:1107.5451



First-order phase transition: Effective potential ($T \neq 0$)

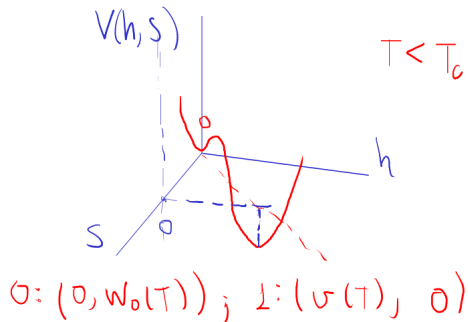
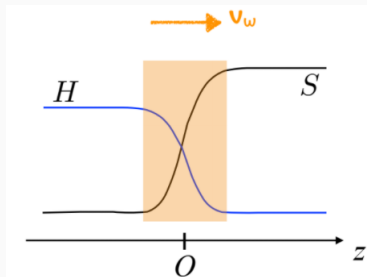
$h = H/\sqrt{2}$, $s = |S|$ with vevs: $v(T)$ and $w(T)$ such that $v(T_c) = w(T_c)$

$$V_T(h, s) = \frac{\lambda_H v_c^4}{4} \left(\frac{h^2}{v_c^2} + \frac{s^2}{w_c^2} - 1 \right)^2 + \frac{\lambda_H v_c^2}{m_{s,c}^2 w_{0,c}^4} h^2 s^2 + (T^2 - T_c^2)(c_h h^2 + c_s s^2), \quad (10)$$

where

$$c_h = \frac{1}{48} (9g_2^2 + 3g_1^2 + 12y_t^2 + 24\lambda_H + \lambda_{HS}), \quad c_s = \frac{1}{12} (3\lambda_S + 2\lambda_{HS}). \quad (11)$$

arXiv: Sec. 4.1 arXiv:1107.5451



Using the thin wall approximation for the nucleation bubbles, we use the ansatz in which the space dependence of the fields is given by

$$h(z) = \frac{1}{2}v(T_n)(1 - \tanh(z/L_w)) , \quad s(z) = \frac{1}{2}w_0(T_n)(1 + \tanh(z/L_w)) ,$$

where z is the direction normal to the wall and L_w is the wall width.

The nucleation temperature, T_n , is defined by the condition

$$\exp(-S_3/T_n) = \frac{3}{4\pi} \left(\frac{H(T_n)}{T_n} \right)^4 \left(\frac{2\pi T_n}{S_3} \right)^{\frac{3}{2}},$$

where S_3 is the Euclidean action of the bubble and $H(T)$ is the Hubble rate.

The *CP* violating phase, θ , from

$$M_\chi(z) = m_\chi(z) + |y| e^{i\theta} |S(z)|, \quad (12)$$

Boltzmann equation i

$$\xi_i(z) \equiv \mu_i(z)/T = 6(n_i - \bar{n}_i)/T^3,$$

$$-D_L \xi''_{\chi_L} - v_w \xi'_{\chi_L} + \Gamma_L (\xi_{\chi_L} - \xi_{\chi_R}) = S_{\mathcal{CP}},$$

where D_L is the diffusion constant for χ_L , which is related to the scattering rate Γ_L by

$$D_L = \frac{3x+2}{x^2+3x+2} \frac{1}{3\Gamma_L}, \quad x \equiv m_\chi/T \quad (13)$$

and

$$S_{\mathcal{CP}} = -\frac{\lambda}{2} \frac{v_w D_L}{\frac{3x+2}{x^2+3x+2} T} \frac{(1-x)e^{-x} + x^2 E_1(x)}{4m_\chi^2 K_2(x)} \frac{m_\chi w_0(T_n) \lambda \left(-2 + \cosh\left(\frac{2z}{L_w}\right)\right) \sin \theta}{L_w^3 \cosh^4\left(\frac{z}{L_w}\right)}, \quad (14)$$

where v_w is the wall's velocity $E_1(x)$ is the error function and $K_2(x)$ is the modified Bessel function of the second kind.

Transfer DM asymmetry to SM quarks

The chiral particles give rise to a non-zero $U(1)_B$ charge density in the proximity of the wall. This results in a Z' background that couples to the SM fields with $U(1)_B$ charge,

$$\langle Z'_0(z) \rangle = \frac{g_B (q_{\chi_L} - q_{\chi_R}) T_n^3}{6M_{Z'}} \int_{-\infty}^{\infty} dz_1 \xi_{\chi_L}(z_1) e^{-M_{Z'}|z-z_1|},$$

which generates a chemical potential for the SM quarks,

$$\mu_Q(z) = \mu_{d_R, u_R}(z) = 3 \times \frac{5}{9} \times g_B \langle Z'_0(z) \rangle.$$

This chemical potential sources a thermal-equilibrium asymmetry in the quarks, $\Delta n_Q^{\text{EQ}}(z) \sim T_n^2 \mu_Q(z)$.

From [1]

If the Z' is sufficiently light, it mediates a long range force that extends into the region outside the bubble wall with unbroken electroweak symmetry.

Finally, the baryon-number asymmetry is then given by

$$n_B = \frac{\Gamma_{\text{sph}}}{v_w} \int_0^\infty dz n_Q^{\text{EQ}}(z) \exp\left(-\frac{\Gamma_{\text{sph}}}{v_w} z\right),$$

where Γ_{sph} is the sphaleron rate. The baryon-to-photon-number ratio is then obtained by

$$\eta_B = \frac{n_B}{s(T_n)}, \quad s(T) \equiv \frac{2\pi^2}{45} g_{*S}(T) T^3,$$

where $g_{*S}(T)$ is the effective number of relativistic degrees of freedom.

Our goal is to find what regions of the parameter space yield

$$0.82 \times 10^{-10} < \eta_B < 0.92 \times 10^{-10}. \quad (15)$$

- SARAH→SPheno→MicroMegas
- η_B calculation code
- Python notebook with the scan

arXiv:1810.08055

Ten Simple Rules for Reproducible Research in Jupyter Notebook Fernando Pérez, *et al*

[...] In this paper, we address several questions about reproducibility [...] Combined with software repositories and open source licensing, notebooks are powerful tools for transparent, collaborative, reproducible, and reusable data analyses.

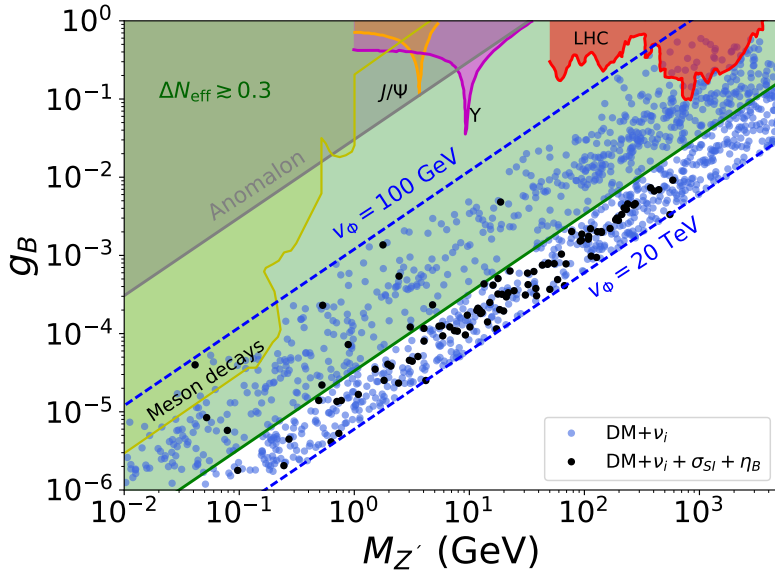
We vary the typical Dirac-fermion DM parameter space and for each point that satisfy neutrino oscillation data, relic density and DM direct detection constraints. For each point we

...

Parameter	Range
θ	$(-\pi/2, \pi/2)$
$w_0(T_n)/\text{GeV}$	100 – 500
T_n/GeV	100 – 200
L_w/GeV^{-1}	$1/T_n - 10/T_n$
v_w	0.05 – 0.5

Table 3: Scan ranges for the free parameters that are involved in the baryogenesis mechanism.

Black points: Dirac neutrinos with proper DM and baryon assymetry



A $U(1)_B$ is presented as an example of models where all new fermions required to cancel out the anomalies are used to solve phenomenological problems of the standard model (SM):

- EW-scale fermion vector-like doublets and iso-singlet charged singlets, in conjunction with right-handed neutrinos with repeated Abelian charges, participate in the generation of small neutrino masses through the Dirac-dark Zee mechanism
- The other SM-singlets are used to explain the dark matter in the universe, while their coupling to an inert singlet scalar is the source of the CP violation.

In the presence of a strong first-order electroweak phase transition, this “dark” CP violation allows for successful electroweak baryogenesis by using long range force mediated by a sufficiently light Z' which transfers the asymmetry from the Dark sector into the SM.