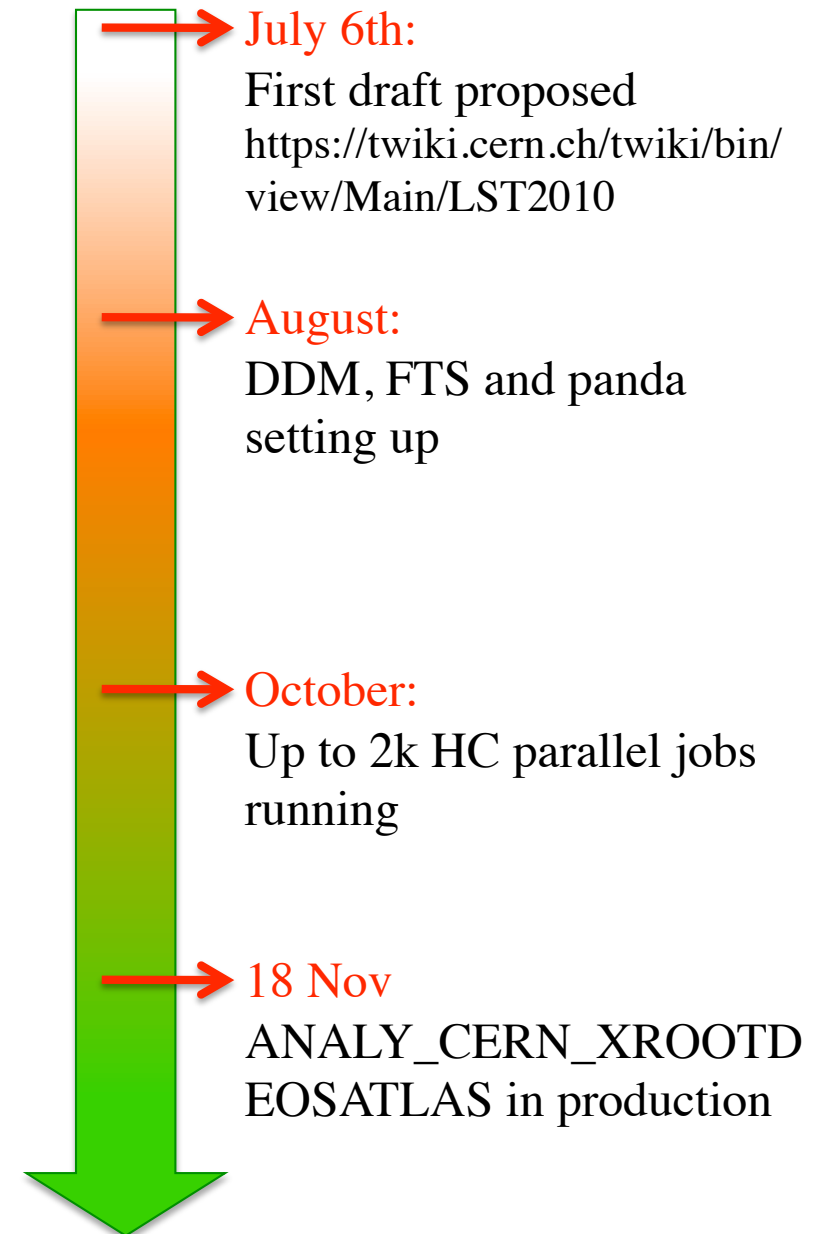


Large Scale Test EOS

ATLAS Distributed Computing
&
CERN IT (DSS + ES)

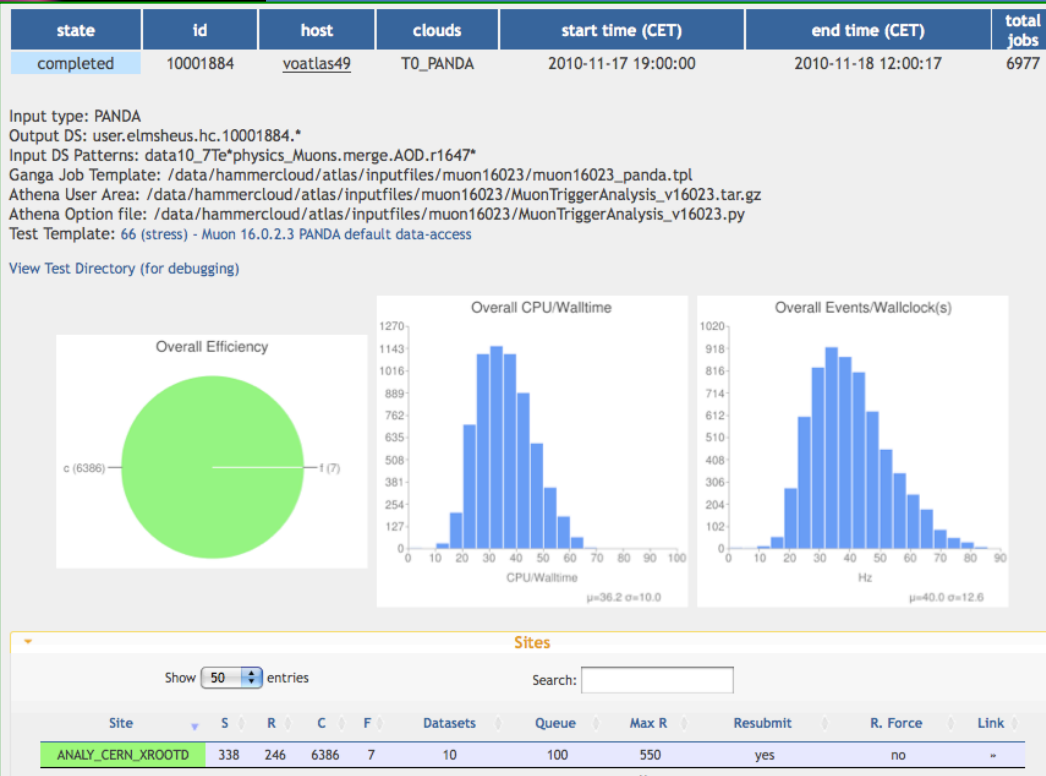
- July - Kick-off meeting, draft test plan proposed
- August - Phase 1, 6 weeks:
 - Preparation and pre-testing
- October - Phase 2, 4 weeks:
 - Tuning
- November - Phase 3, 3 months:
 - Test Running



Preparation, Pre-testing and Tuning

- Storage set up and configuration
 - CERN-PROD_EOSDATADISK and EOSSCRATCHDISK created
 - Basic tests performed
 - Endpoint included in the FTS servers
 - ATLAS DDM dashboard monitored
- Pandaqueue ANALY_CERN_XROOTD
- ATLAS DDM Functional Test started
- HammerCloud useful data uploaded
- HC functional tests
- HC stress tests

- ✓ HC stress tests run “weekly”
- ✓ DDM FT monitoring
 - Storage reconfiguration
 - from RAID to JBOD
 - Throughput limitation (~ 450 MB/s:
 - More gridftp servers
 - Space publication:
 - Number of file replica configurable by dir:
 - Space as seen from ATLAS difficult to publish correctly
 - ✓ Patch deployed
 - CERN batch queue re-configuration
 - Dedicated queue to know the exact number of parallel job running vs EOS



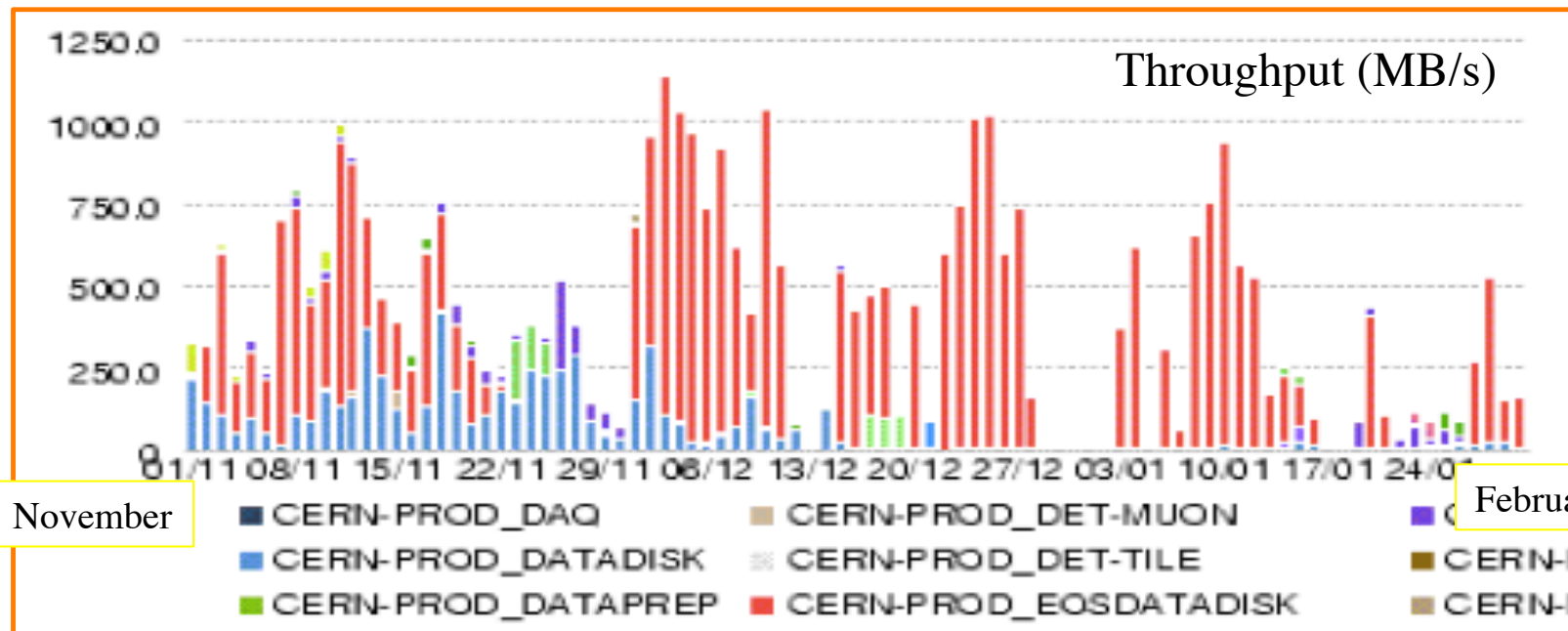
- ANALY_CERN_XROOTD up to 2k parallel job running (10th Nov)
- CERN-PROD_EOSDATADISK stable import up to 1GB/s

✓ Nov 18th : ANALY_CERN_XROOTD open to ATLAS users

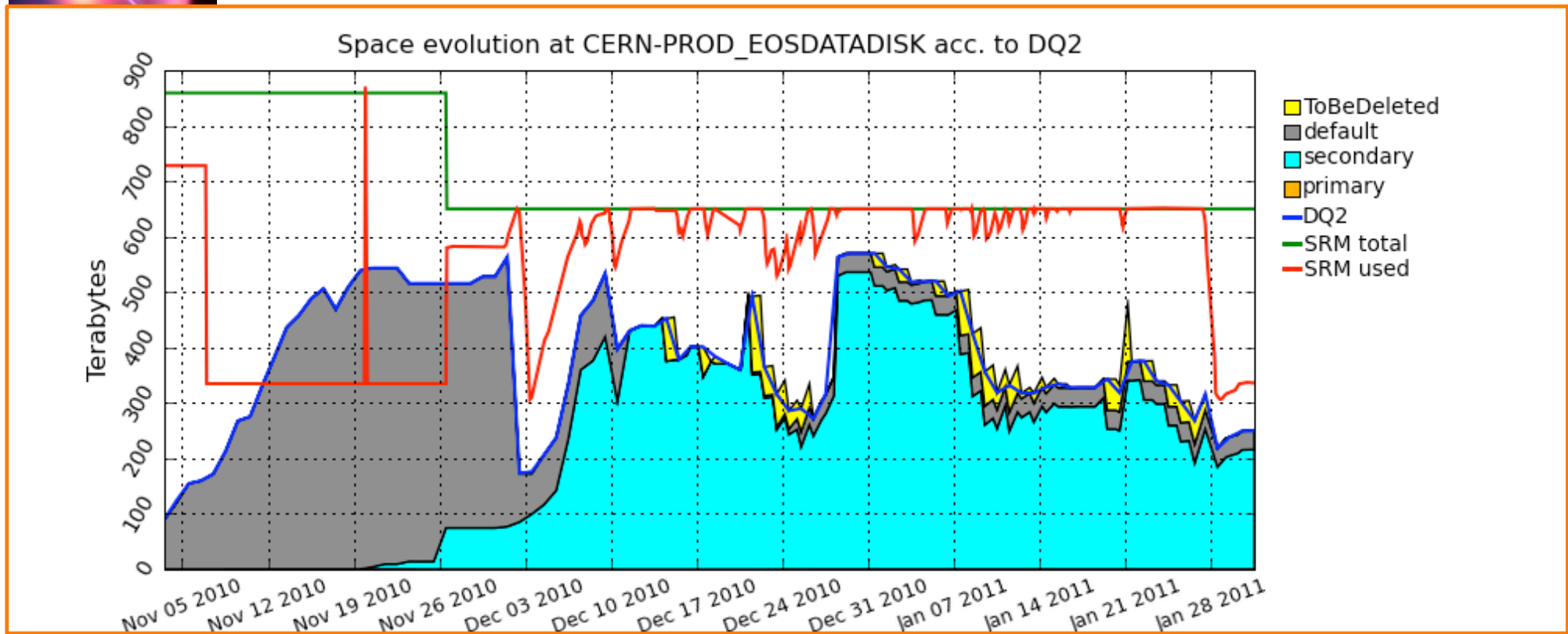
- 500 parallel jobs max due to I/O limitations (33 disk servers)

Operations handled by ADC shifters -- as all other ATLAS Sites

- PD2P activated
 - Special algorithm: datasets accessed in any ATLAS Grid Site were replicated
 - Far too aggressive
 - Difficult to tune: we moved from “accessed once” to “accessed 2”, then 3, now to “accessed at least 5 times but no ESD”



- Storage cleaning
 - Due to too aggressive PD2P always too close to full
 - Often subscriptions get broken (older than 15days)
 - Thresholds for Victor and for blacklisting tuned ad-hoc



- Coordination
 - Global coordination:
 - ADC Coordinator & CERN-IT/DSS Group Leader
 - “Daily” coordination:
 - one from IT-DSS and one from ADC (IT-ES)
- Meetings:
 - Weekly during Preparation and Tuning phases
 - Wrap-up after each phase completion



- Large Scale Test on EOS is still ongoing
 - Cap to 500 parallel jobs running now removed
 - Direct access has been successfully tested (functional tests, still to run stress tests)
- LST plan was effective to evaluate up to here the behavior of EOS as an ATLAS Grid Site
 - Can LST ‘procedures’ be re-used to perform similar test of different storage technologies?
 - EOS