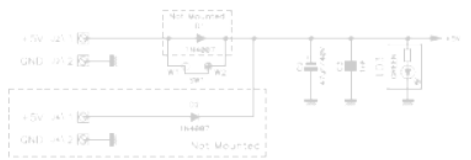




User Permit Test System "Update"

- ◆ Purpose
- ◆ How does it work?
- ◆ Protection & Safety
- ◆ Conclusion



Project/Project:		Resp.:	
Ensemble/Set:		Designer: Müller-Rang F.	
Sous-ensemble/Under-set:		Drawn: Cvetič, Czakl EC 22.01.2008	
Document:		MODA:	
		MODB:	
		File: LDA-81775-V1-R_sch sch	
Echelle/Scale: 1/1		INDEX	
CERN		LABORATOIRE EUROPEEN POUR LA PHYSIQUE DES PARTICULES EUROPEAN LABORATORY FOR PARTICLE PHYSICS GENÈVE / GENEVA	
Ref. No. LDA-81775-V1-0			



Purpose

Main aim:

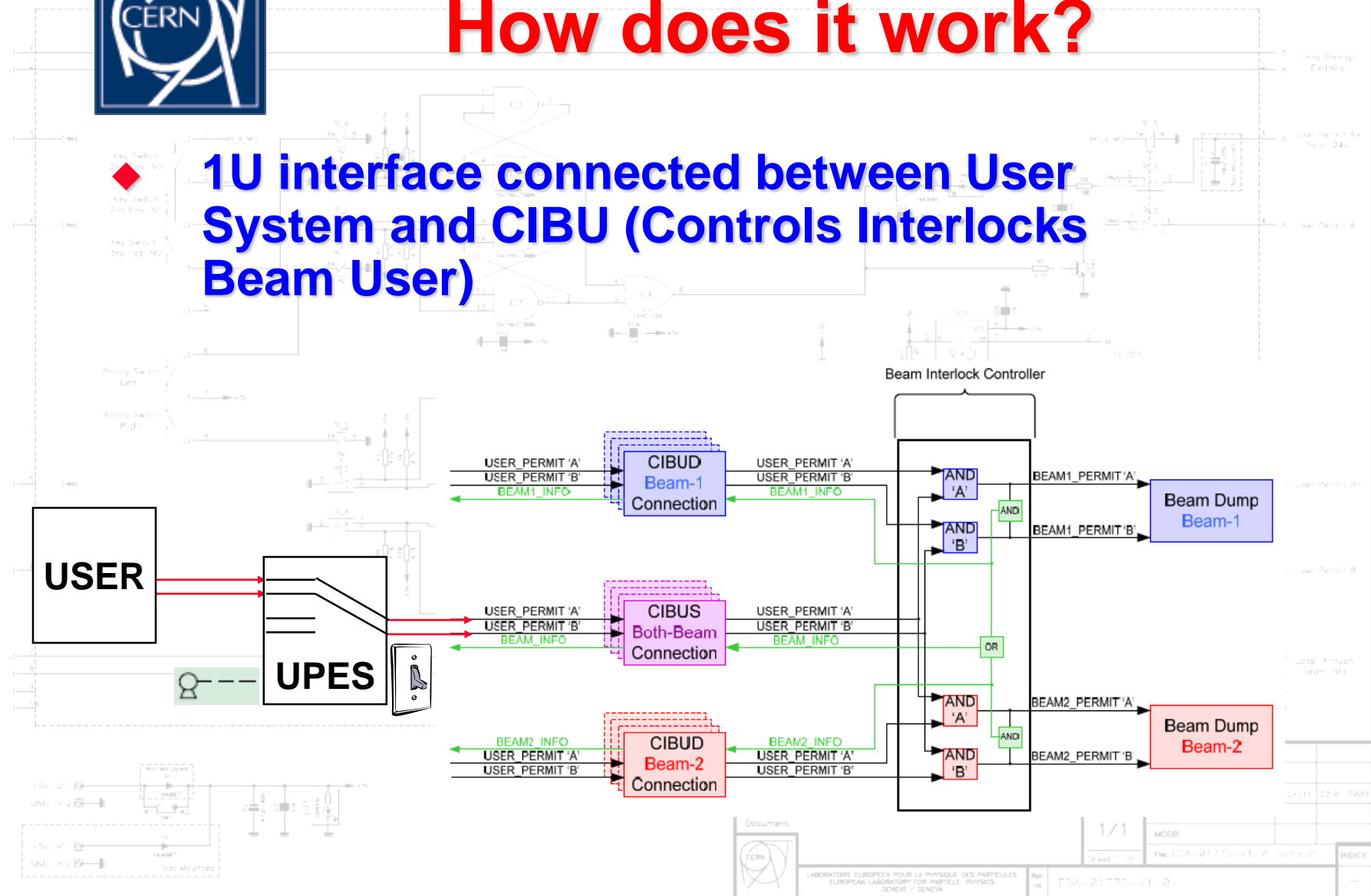
- 1) **Test the CIBU during commissioning and after shutdown to verify the link to the BIS. (Therefore: Full compatibility to the CIBU)**
- 2) **Optional: Simulate User Permit to allow injection when client system is off-line.**

Project/Project:		Responsible:		
Designer/Designer:		Designer: Müller-Rang, F.		
Sub-assembly/Underpart:		Drawn: Cvetkovic, C.	DATE: 22.01.2008	
Document:		MODA:		
		MODB:		
		File: LDA-81775-V1-R_sch sch		INDEX
 LABORATOIRE EUROPEEN POUR LA PHYSIQUE DES PARTICULES EUROPEAN LABORATORY FOR PARTICLE PHYSICS GENEVE / GENEVA		Ref. No.	LDA-81775-V1-0	



How does it work?

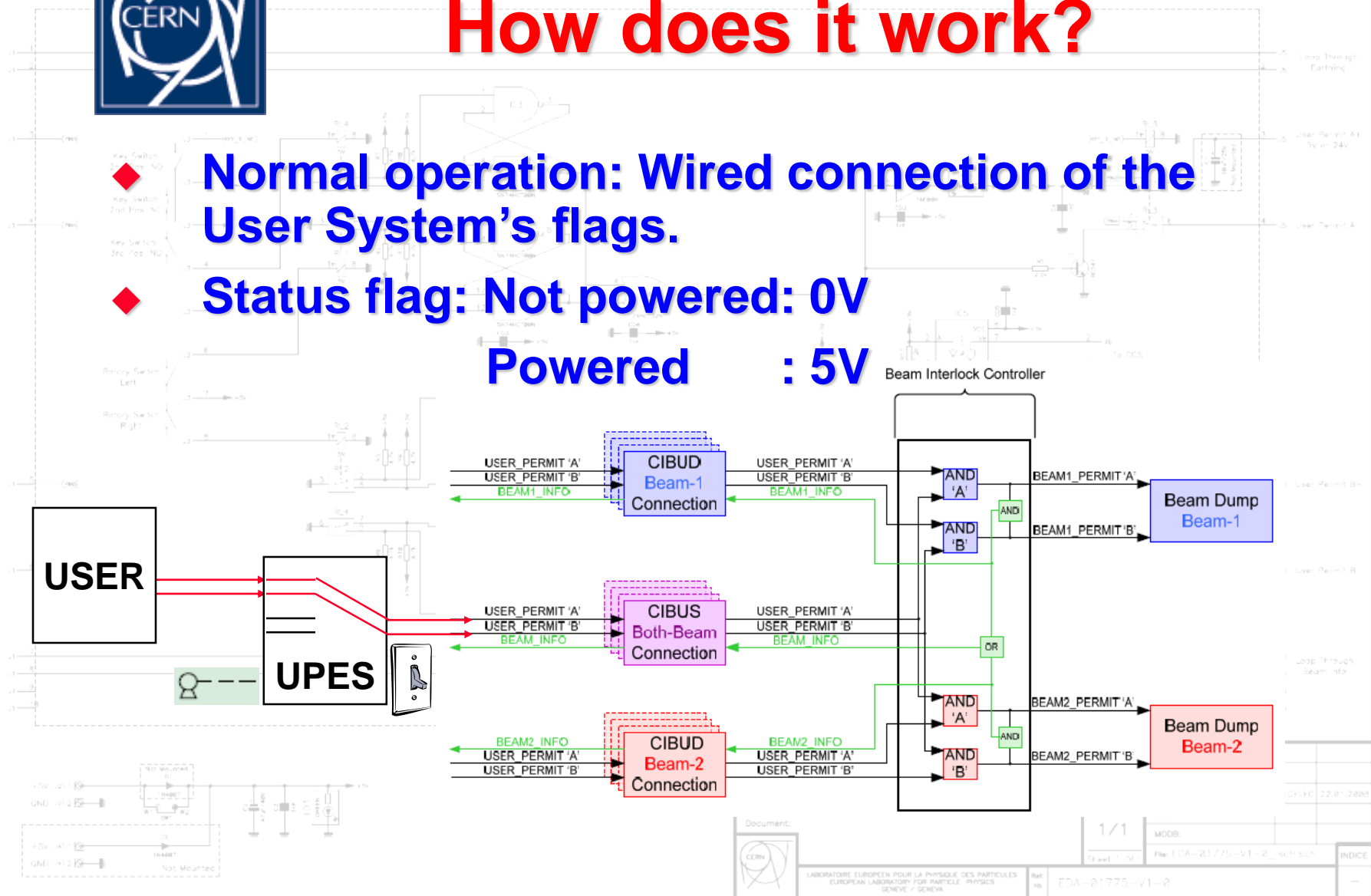
1U interface connected between User System and CIBU (Controls Interlocks Beam User)





How does it work?

- ◆ Normal operation: Wired connection of the User System's flags.
- ◆ Status flag: Not powered: 0V
Powered : 5V

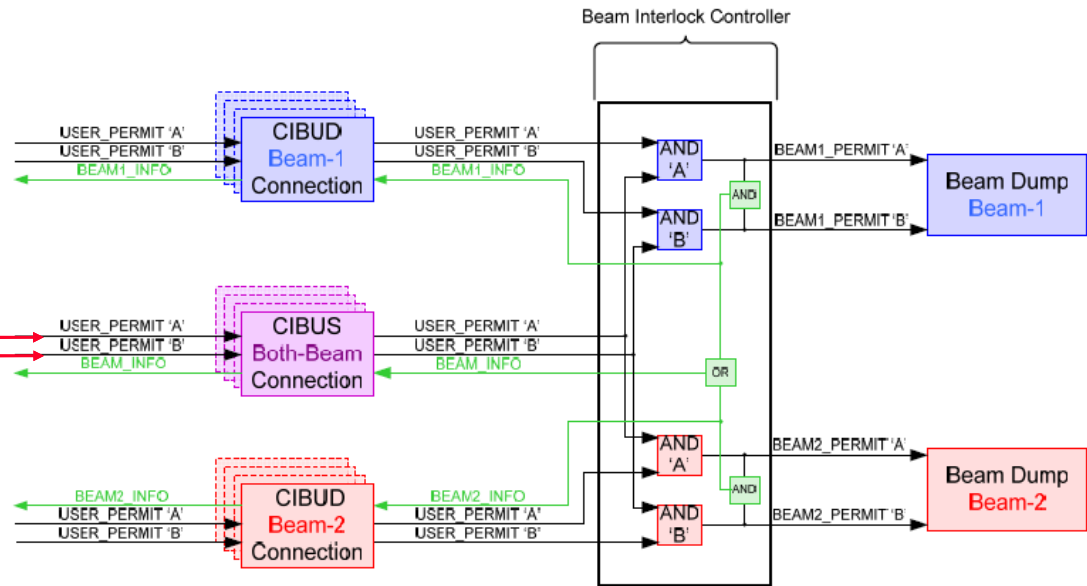
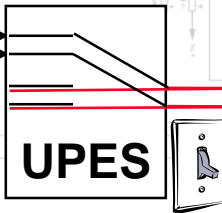




How does it work?

Test mode: Status flag: 0.15V

- Decoupling the User System with a Key.
- Test each User Permit channel separately.

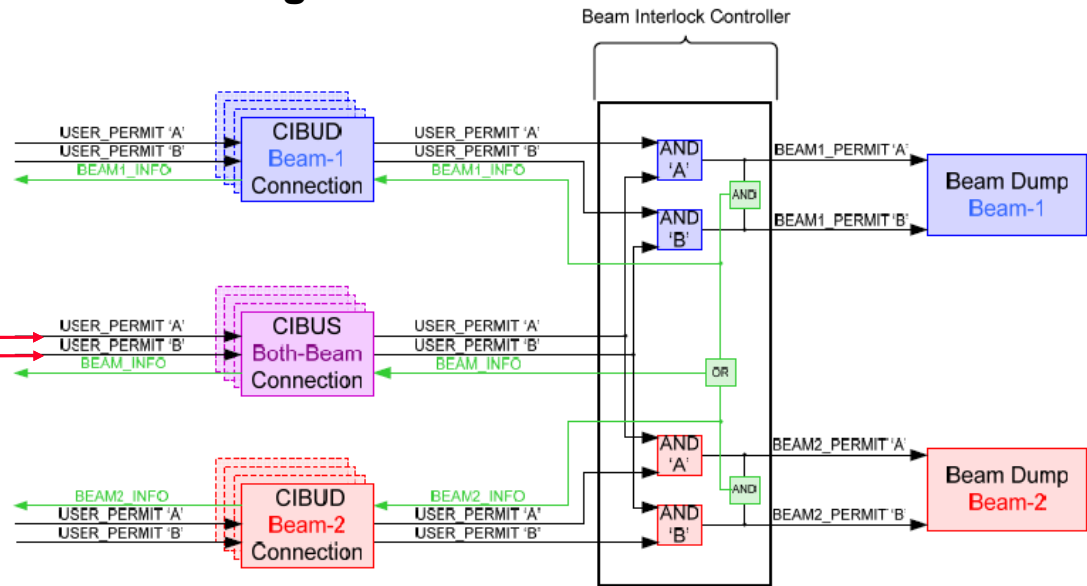
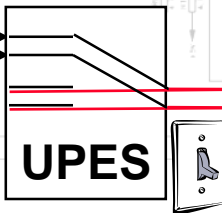




How does it work?

**Optional: In case User system down or off-line:
Status Flag: 0.15V**

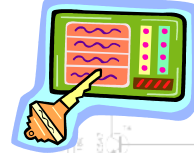
- Decoupling the User System with a Key.
- Simulate User Permit flag on redundant CIBU channels.



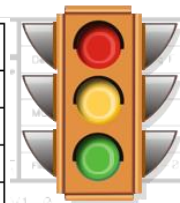


Protection & Safety

- ◆ Mounted inside rack
- ◆ Key switch protected
- ◆ On-board 5V power supply (option for 2nd redundant power supply)
- ◆ Status flag for the Detector Control System.



Status	Output voltage
Not powered or signal cable failure	0V
Powered (Off position)	5V
Powered (CIBU Test Mode)	0.15V
Powered (Override Mode)	0.15V





Conclusion

- ◆ **Transparent for the interlock chain.**
- ◆ **Any other state is visible via the status flag.**
- ◆ **No functionality without key.**
- ◆ **Fail-safe state is a hardwired connection to the user.**
- ◆ **Main function is to test the connection to BIS.**
- ◆ **No need to change any cable connections.**
- ◆ **Test function is identical for all users.**
- ◆ **Override is an optional byproduct of the main function.**

Project/Project:		Resp.:		
Engineer/Ref.:		Designer: Müller-Rang, F.		
Sous-ensemble/Underpart:		Drawn: Cvetk, S.	DATE: 22.01.2008	
Document:		MODA:		
		MODB:		
		File: LDA-81775-V1-R_sch sch		INDEX
		LABORATOIRE EUROPEEN POUR LA PHYSIQUE DES PARTICULES EUROPEAN LABORATORY FOR PARTICLE PHYSICS GENÈVE / GENEVA	Ref. No. LDA-81775-V1-R	

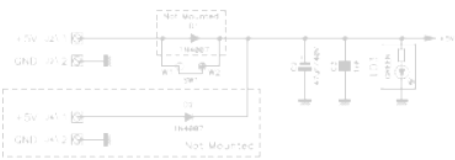


Bundy B From/To Lise

Bundy B Male From/To CBU



Thank you for your attention



Project/Project:		Resp.:		
Ensemble/Set:		Designer: Müller-Rang F.		
Sous-ensemble/Under-set:		Drawn: Cvetič, Czakl EC	22.01.2008	
Document:		MODA:		
		MODB:		
		File: LDA-81775-V1-R_sch sch		INDICE
LABORATOIRE EUROPEEN POUR LA PHYSIQUE DES PARTICULES EUROPEAN LABORATORY FOR PARTICLE PHYSICS GENÈVE / GENEVA		Ref. No.	LDA-81775-V1-0	