
Asynchronous Beam Dump

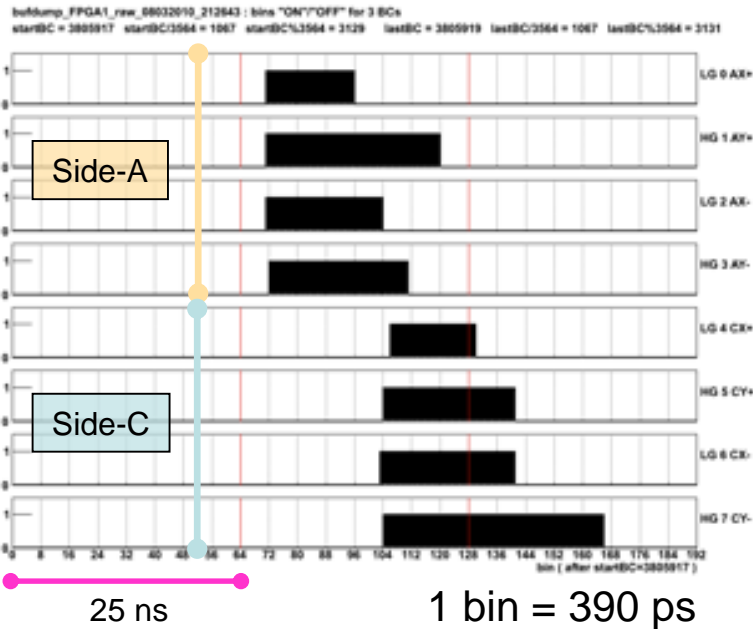
23-Apr-10 4:13:22

Sigi Wenig

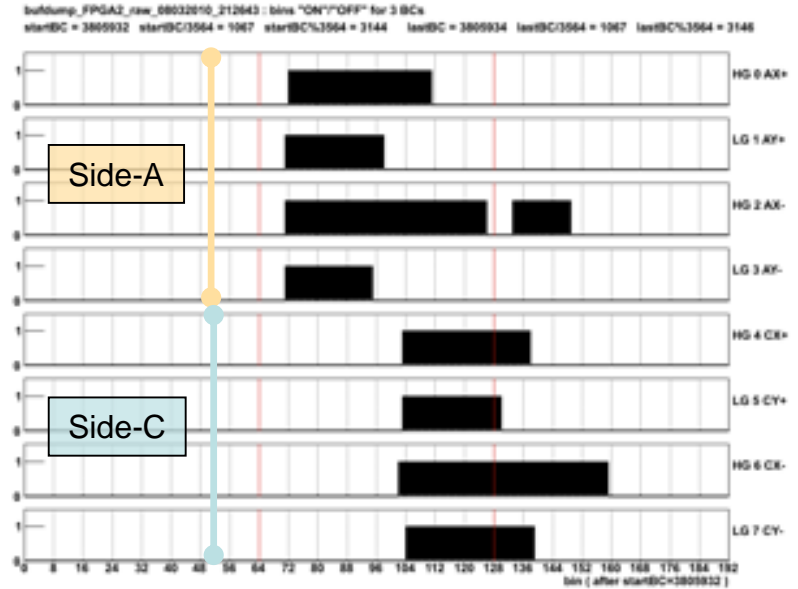
MPP, 30-April-2010

- Typical beam dump
 - All high and low gain channels fired (both ROD's/FPGA's)
 - Side-A before Side-C
- HV at 1000 V; TH at 300 mV

FPGA-1/ROD-1

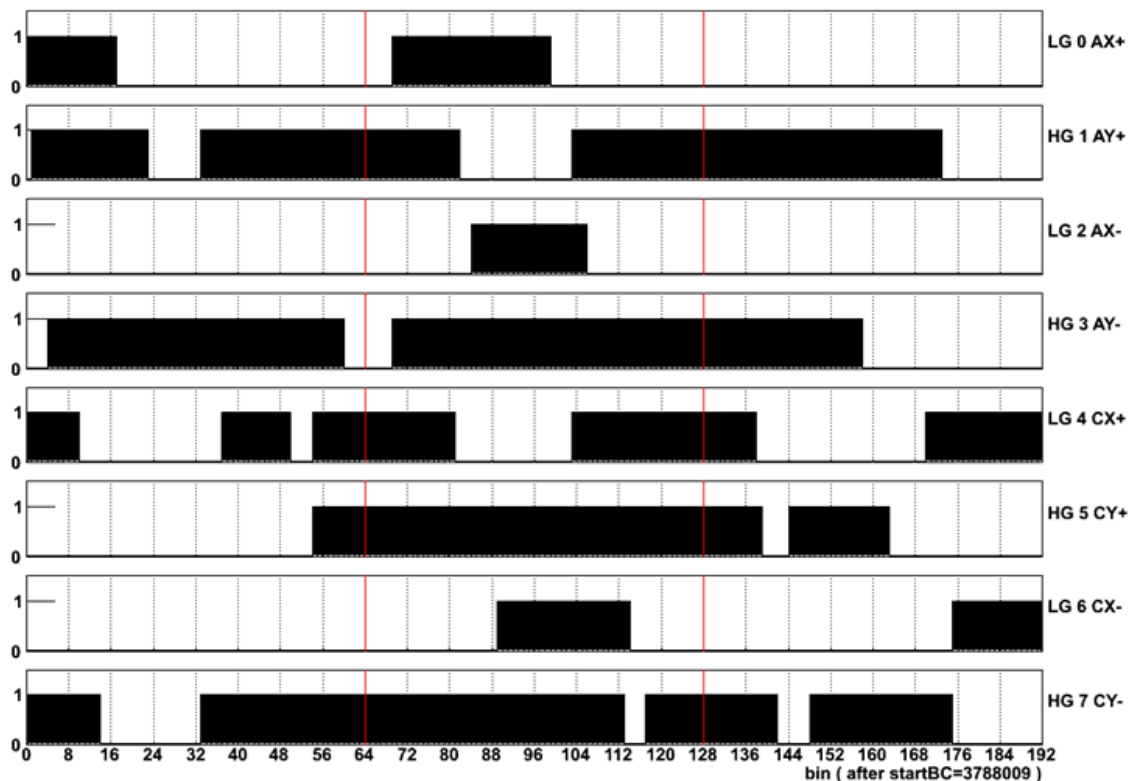


FPGA-2/ROD-2



- Asynchronous beam dump
 - Spread over many bunch crossings (3 BC shown here)
- HV at 1000 V; TH at 300 mV

bufdump_FPGA1_raw_23042010_041322 : bins "ON"/"OFF" for 3 BCs
 startBC = 3788009 startBC/3564 = 1062 startBC%3564 = 3041 lastBC = 3788011 lastBC/3564 = 1062 lastBC%3564 = 3043



1 bin = 390 ps

- Asynchronous beam dump
 - Spread over 10-20 bunch crossings
- HV at 1000 V; TH at 300 mV

High gain channels

Low gain channels

