

Tier1 Report 20/04/2022

Activity from last weeks:

No issues over easter weekend

Adding OPS VO (Virtual Organization) support to echo webdav (ongoing.)

Open GGUS tickets:

Ticket-ID	VO	Priority	Status	Last Update	Subject	Owner
156890	atlas	urgent	in progress	2022-04-19 15:18:00	stuck staging requests to RAL Antares	Antares
156843	dune	urgent	in progress	2022-04-14 20:46:00	DUNE Antares testing	Antares
156755	atlas	urgent	in progress	2022-04-14 00:39:00	Deletion failures RAL-LCG2-ECHO_DATADISK	JamesW
156742	none	less urgent	in progress	2022-04-19 07:58:00	NGI_UK - March 2022 - RP/RC OLA performance	Prod/Ceph
156736	lhcb	top priority	in progress	2022-04-20 07:52:00	FTS Transfer failures from PIC to Echo	Ceph
156497	ops	less urgent	on hold	2022-04-13 09:35:00	[Dashboard] Issues detected at RAL-LCG2	Prod
156492	lhcb	urgent	on hold	2022-04-13 08:23:00	ceph-gw1 is much slower than the others	Ceph
156337	cms	urgent	in progress	2022-04-13 11:19:00	webdav SAM tests failing at T1_UK_RAL	Ceph
156333	dune	urgent	waiting for reply	2022-04-13 13:13:00	Rucio transfers slow and/or failing to RAL_ECHO	Ceph
156277	lhcb	urgent	in progress	2022-04-13 08:27:00	FTS3 transfers Failed from RAL-LCG2	Ceph
156268	cms	top priority	in progress	2022-04-18 21:53:00	Tape Challenge Spring 2022 RAL_Tape	KatyE

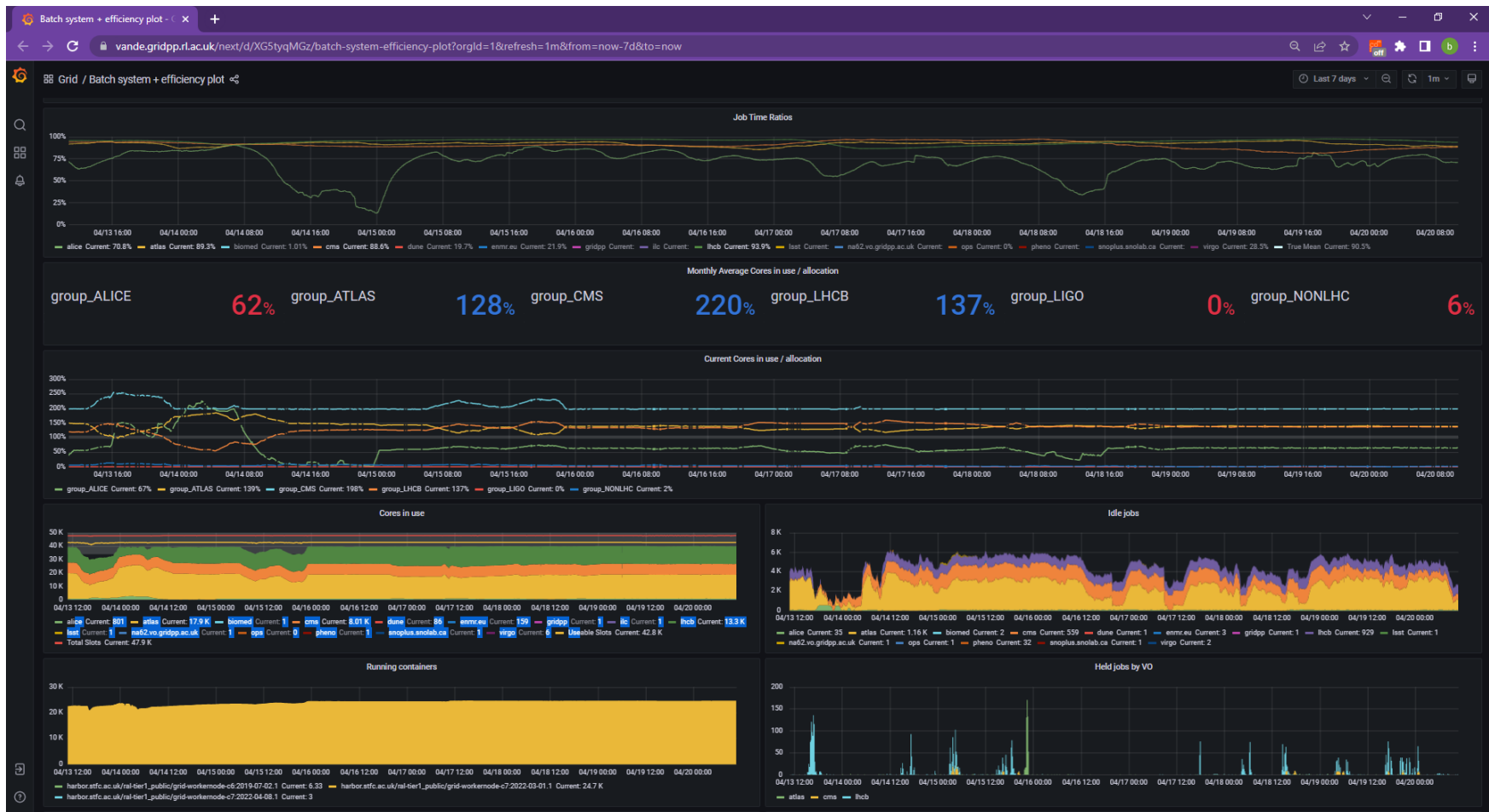
156233	none	less urgent	on hold	2022-03-22 13:39:00	Dashboard alarms for services in downtime	Prod
155981	none	urgent	in progress	2022-04-20 08:49:00	The ticket should be used as the communication channel with the sites participating in the tape data challenge in March 2022. (RAL-LCG2)	Prod
155819	none	less urgent	in progress	2022-04-05 10:32:00	Verify network information in CRIC (RAL-LCG2)	Prod
155743	ops	less urgent	in progress	2022-03-25 09:24:00	[Dashboard] Issues detected at RAL-LCG2	Ceph
155570	lhcb	urgent	waiting for reply	2022-04-13 13:36:00	ROOT thinks files accessed remotely have zero size	Ceph
155319	lhcb	urgent	waiting for reply	2022-03-02 14:00:00	Failing LHCb style job on RAL WN	Ceph
155120	lhcb	urgent	in progress	2022-04-08 08:58:00	Investigating Echo deletion problems	T1 Manager
142350	lhcb	top priority	on hold	2022-04-13 08:34:00	Problem accessing some LHCb files at RAL	Ceph

Closed GGUS tickets:

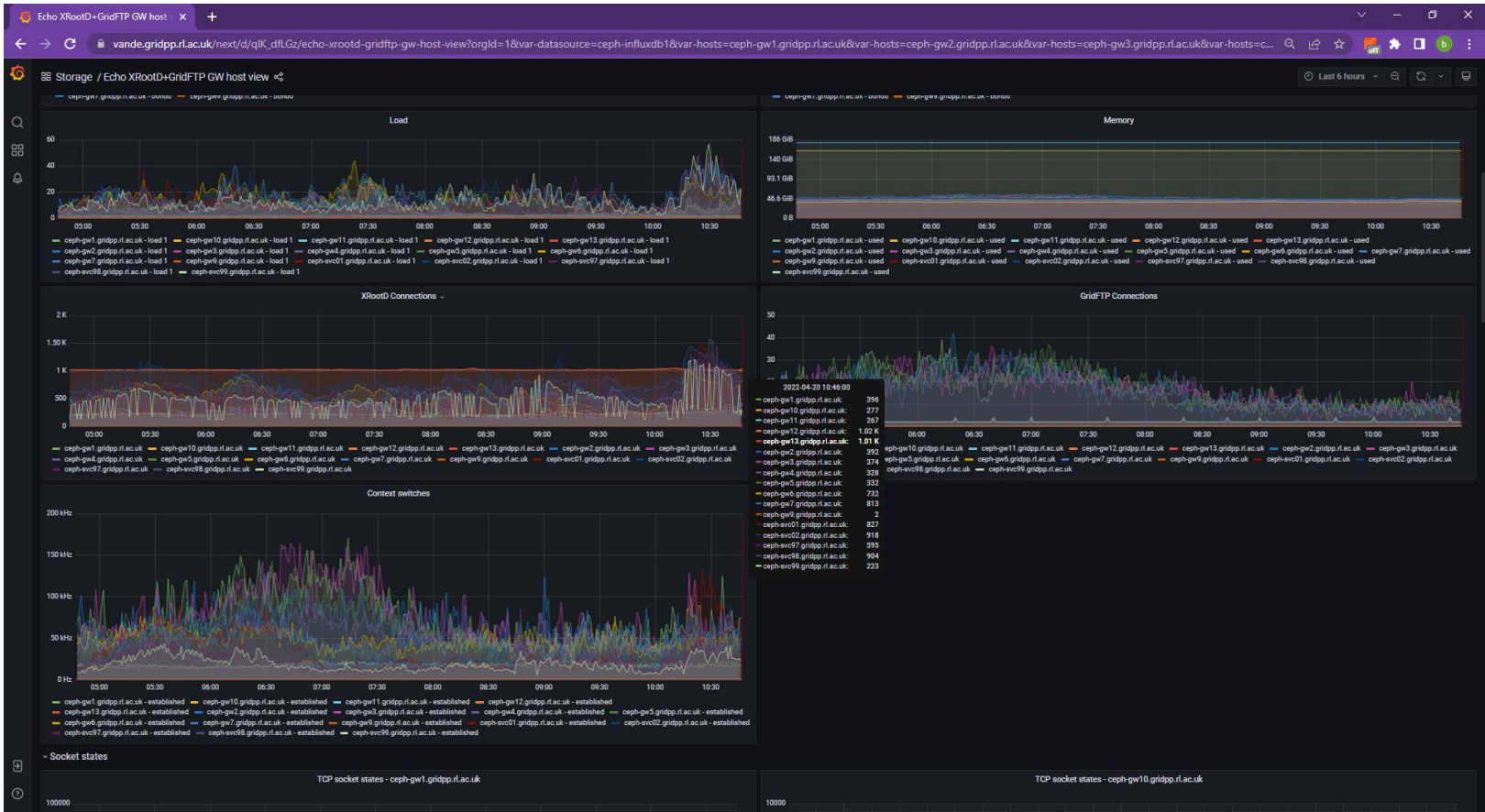
Ticket-ID	Type	VO	Site	Priority	Responsible Unit	Status	Last Update	Subject	Scope
156667	ALARM	none	RAL-LCG2	top priority	NGI_UK	closed	2022-04-13 23:59:00	This TEST ALARM has been raised for testing GGUS alarm workflow after a new GGUS release.	EGI

155513	TEAM	lhcb	RAL-LCG2	urgent	NGI_UK	solved	2022-04-13 08:32:00	LHCb's Run 3 access to RAL's tape endpoints	EGI
153367	TEAM	atlas	RAL-LCG2	urgent	NGI_UK	closed	2022-04-13 23:59:00	HTTPS on RAL CTA	EGI

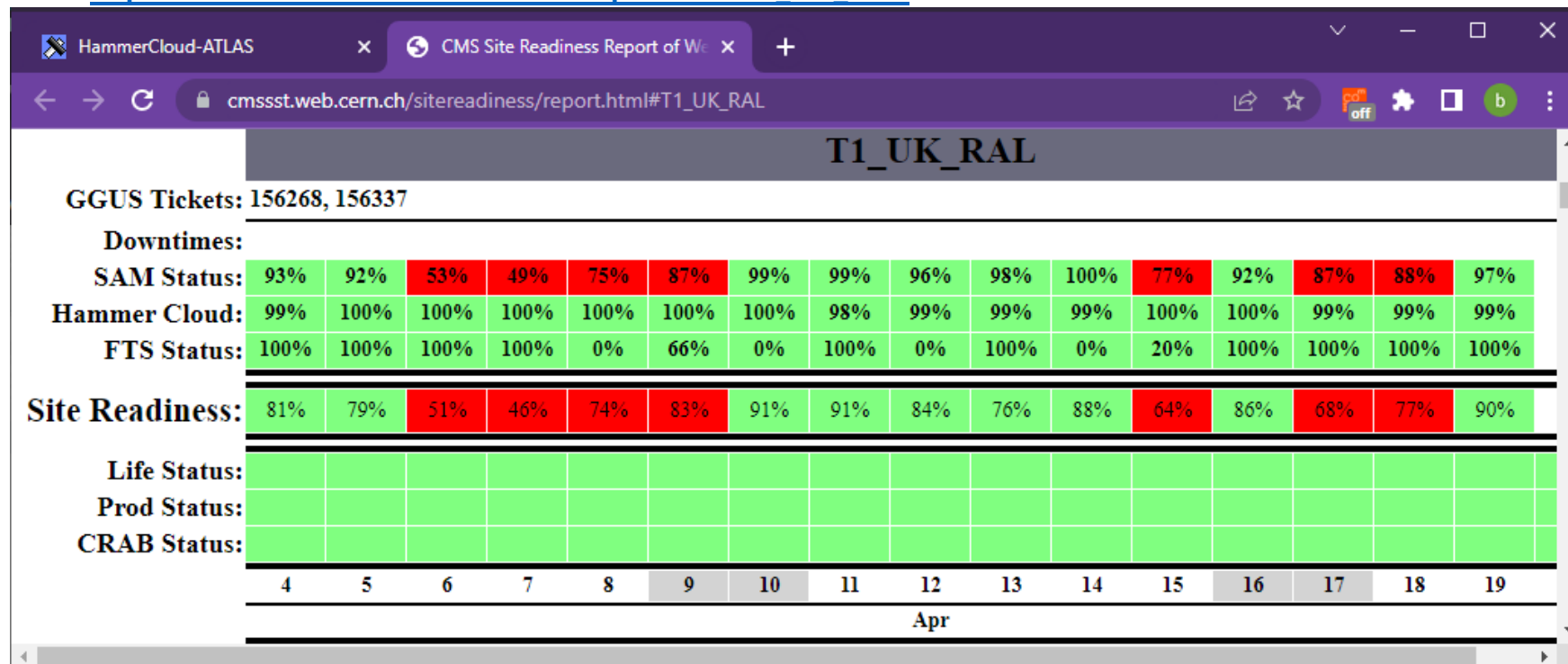
Farm Usage: <https://vande.gridpp.rl.ac.uk/next/d/XG5tyqMGz/batch-system-efficiency-plot?orgId=1&refresh=1m&from=now-7d&to=now>



GW usage: https://vande.gridpp.rl.ac.uk/next/d/qlK_dflGz/echo-xrootd-gridftp-gw-host-view?orgId=1&var-datasource=ceph-influxdb1&var-hosts=ceph-gw1.gridpp.rl.ac.uk&var-hosts=ceph-gw2.gridpp.rl.ac.uk&var-hosts=ceph-gw3.gridpp.rl.ac.uk&var-hosts=ceph-gw4.gridpp.rl.ac.uk&var-hosts=ceph-gw5.gridpp.rl.ac.uk&var-hosts=ceph-gw6.gridpp.rl.ac.uk&var-hosts=ceph-gw7.gridpp.rl.ac.uk&var-hosts=ceph-gw11.gridpp.rl.ac.uk&var-hosts=ceph-gw10.gridpp.rl.ac.uk&var-hosts=ceph-gw12.gridpp.rl.ac.uk&var-hosts=ceph-gw13.gridpp.rl.ac.uk&var-hosts=ceph-gw9.gridpp.rl.ac.uk&var-hosts=ceph-svc01.gridpp.rl.ac.uk&var-hosts=ceph-svc02.gridpp.rl.ac.uk&var-hosts=ceph-svc97.gridpp.rl.ac.uk&var-hosts=ceph-svc98.gridpp.rl.ac.uk&var-hosts=ceph-svc99.gridpp.rl.ac.uk&var-interfaces=bond0



CMS: https://cmsst.web.cern.ch/sitereadiness/report.html#T1_UK_RAL



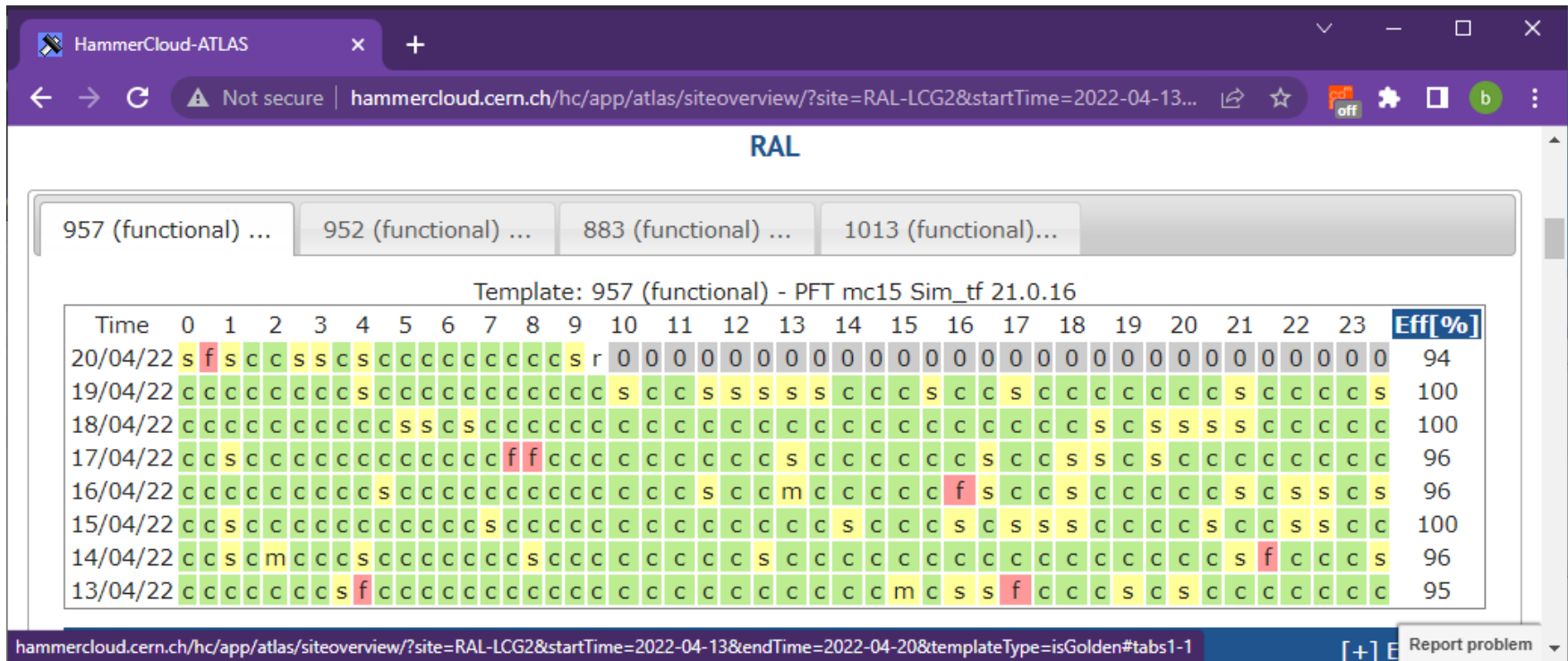
ATLAS: <http://hammercloud.cern.ch/hc/app/atlas/siteoverview/?site=RAL-LCG2&startTime=2022-02-16&endTime=2022-02-23&templateType=isGolden>

RAL

957 (functional) ... 952 (functional) ... 883 (functional) ... 1013 (functional)...

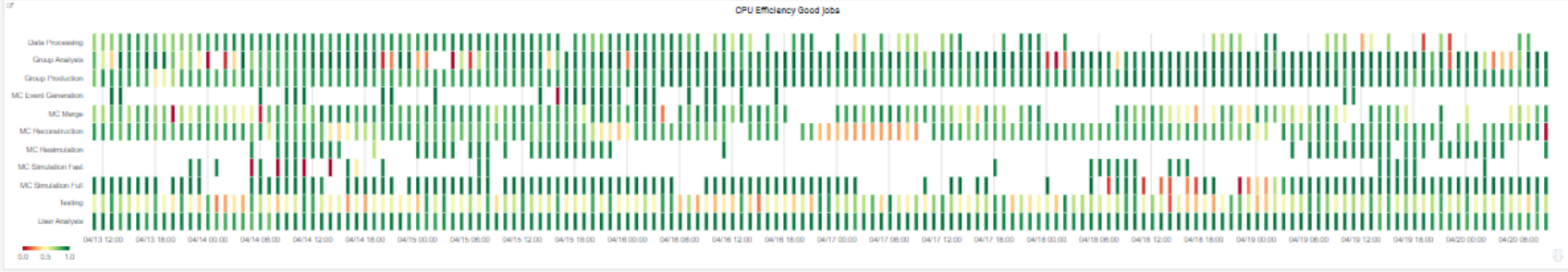
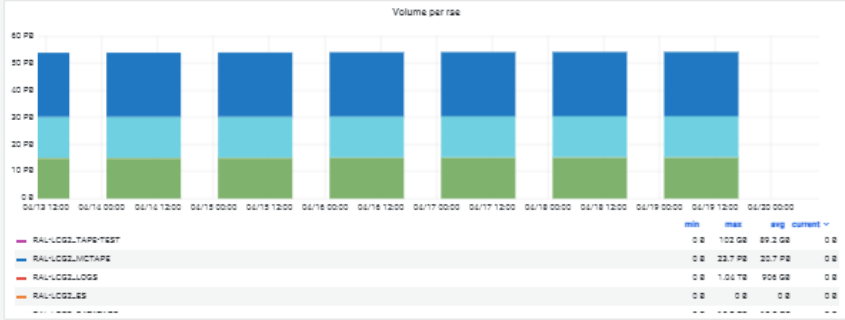
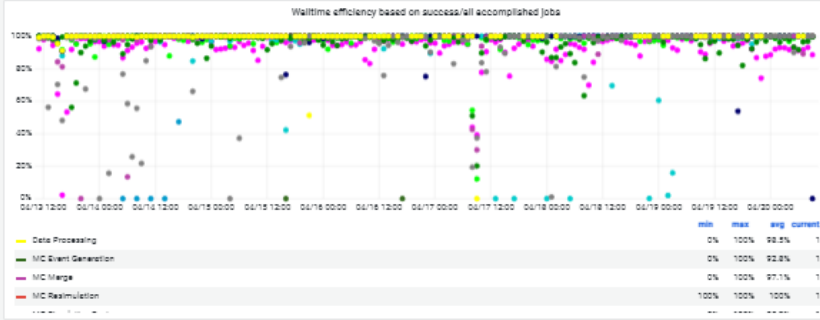
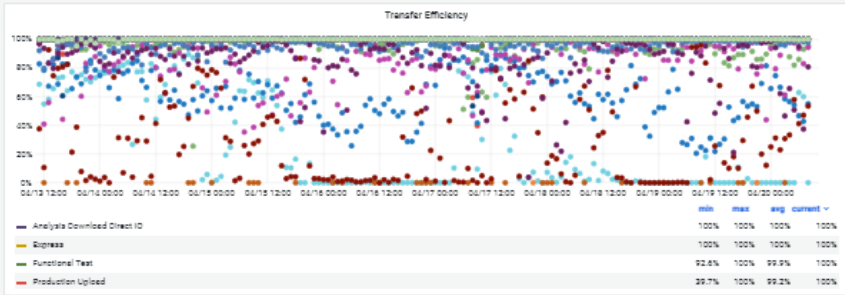
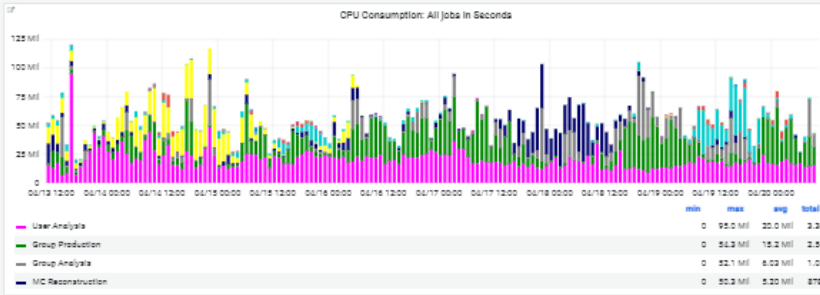
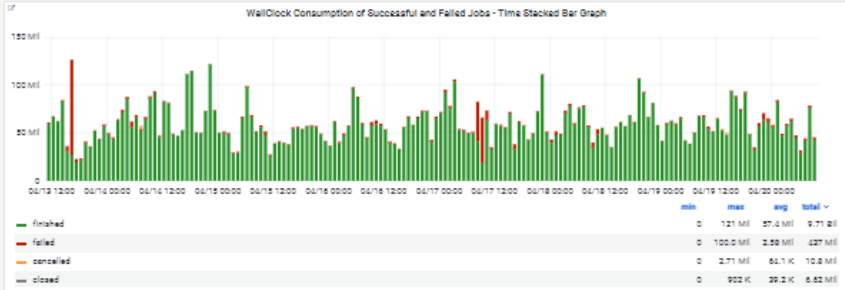
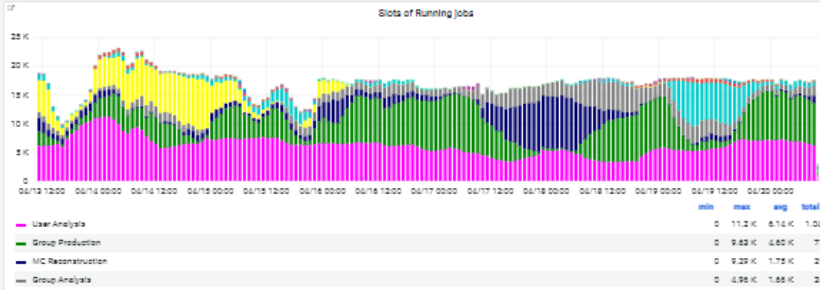
Template: 952 (functional) - AFT Eventloop 21.2.1 Analy

Time	0	1	2	3	4	5	6	7	8	9	10	11	12	13	14	15	16	17	18	19	20	21	22	23	Eff[%]		
20/04/22	c	c	c	c	c	m	c	c	c	c	c	c	c	c	c	c	c	c	c	c	c	c	c	c	c	0	98
19/04/22	s	m	c	c	c	c	c	c	c	c	c	c	c	c	c	c	c	c	c	c	c	c	c	c	c	c	99
18/04/22	c	c	c	c	m	c	c	c	c	m	c	c	c	c	c	c	c	c	c	c	c	c	c	c	c	c	98
17/04/22	c	c	c	c	c	c	c	c	c	s	s	s	f	c	c	m	c	f	c	c	c	c	c	c	c	c	97
16/04/22	c	c	c	m	c	c	c	c	c	c	c	c	c	c	c	c	c	c	c	c	c	c	c	c	c	c	99
15/04/22	c	c	c	c	c	c	c	c	c	c	c	c	c	c	c	c	c	c	c	c	c	c	c	c	c	c	100
14/04/22	c	c	c	c	c	c	s	s	c	c	c	c	c	c	c	c	c	c	c	c	s	s	c	c	c	c	100
13/04/22	c	c	s	c	c	c	c	c	c	s	s	s	s	s	s	c	c	c	c	m	c	c	c	c	s	c	99

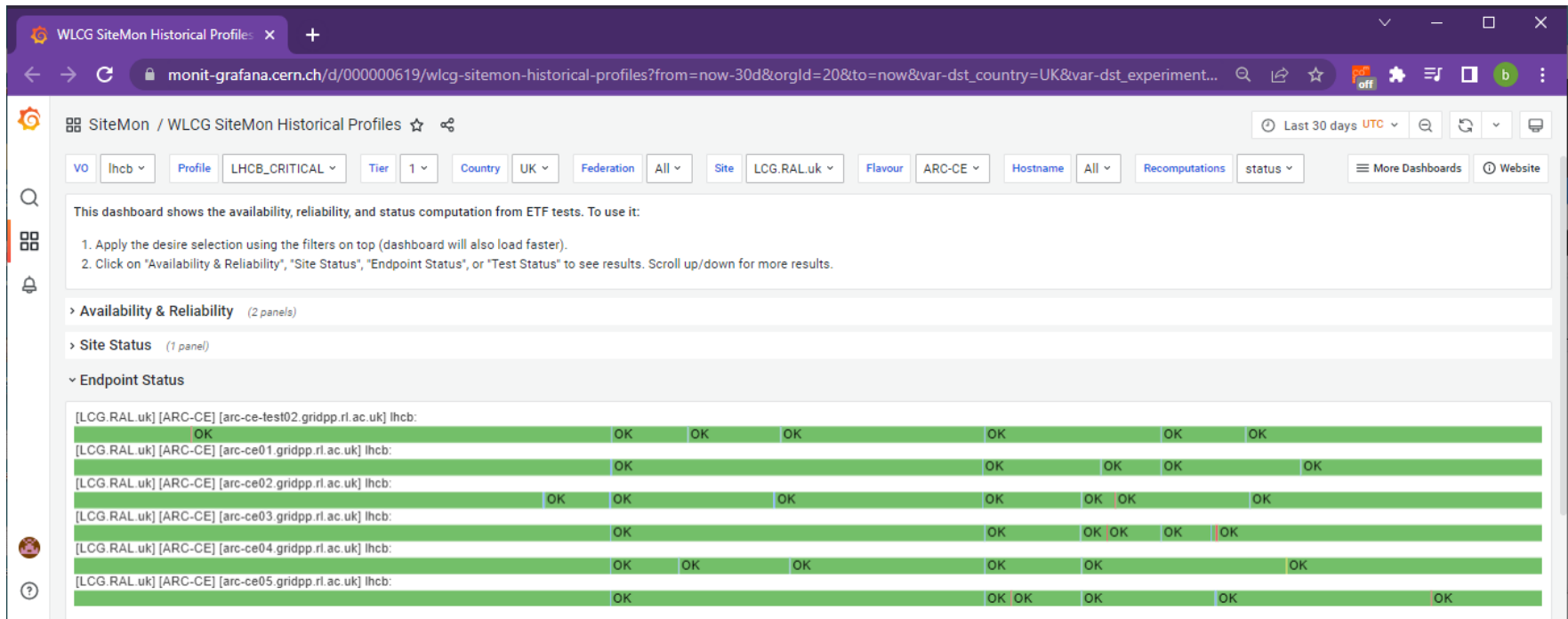


Site Dashboard: https://monit-grafana.cern.ch/d/D26vElGGz/site-oriented-dashboard?orgId=17&var-bin=1h&var-groupby_jobs=adactivity&var-groupby_ddm=activity&var-cloud=All&var-country=All&var-federation=All&var-site=RAL-LCG2&var-computingsite=All&var-jobtype=All&var-es_division_factor=1&var-measurement=ddm_transfer_1h

Binning 1h Group by job Job activity Group By DDM Activity Cloud All Country All Federation All Site RAL-LOG2 Panda Queue All Job type All



LHCB: https://monit-grafana.cern.ch/d/000000619/wlwg-sitemon-historical-profiles?orgId=20&from=now-30d&to=now&var-vo=lhcb&var-profile=LHCB_CRITICAL&var-dst_tier=1&var-dst_country=UK&var-dst_federation=All&var-dst_experiment=site=LCG.RAL.uk&var-service_flavour=ARC-CE&var-dst_hostname=All&var-recomputation=status



Atlas Report

CMS Report

<https://wiki.e-science.cclrc.ac.uk/web1/bin/view/EScienceInternal/CMSWebdavErrors>

LHCb Report

LSST Report