

Tier1 Report 22/06/2022

Activity from last week:

The_RAL network segmentation intervention was completed successfully at ~1700 on Sunday evening.

At time of reporting all services are back to production (with the exception of an IPv6 issue which is being worked on).

As per the declaration of the original downtime_RAL should be considered to be running at risk for Monday and Tuesday as a precaution.

UPDATE: the “at risk” period expired without further incident 13:00 21/06/22

Open GGUS tickets:

Ticket-ID	Type	VO	Priority	Status	Last Update	Subject	Owner
157705	TEAM	atlas	less urgent	on hold	13/06/2022 11:03	RAL-LCG2 transfer failures as destination	Grid
157488	OPS	ops	less urgent	on hold	13/06/2022 12:01	[Dashboard] Issues detected at RAL-LCG2	Prod
157329	OPS	ops	less urgent	on hold	27/05/2022 14:23	[Dashboard] Issues detected at RAL-LCG2	Prod
157296	USER	t2k.org	less urgent	in progress	14/06/2022 15:46	T2K on RAL EOSCTA with DFC	Antares
157173	OPS	ops	less urgent	in progress	21/06/2022 10:10	[Dashboard] Issues detected at RAL-LCG2	Prod
157156	USER	dteam	less urgent	in progress	21/06/2022 09:49	Access problems to STFC Cloud via IRIS IAM	Cloud

Ticket-ID	Type	VO	Priority	Status	Last Update	Subject	Owner
156742	USER	none	less urgent	in progress	15/06/2022 07:53	NGI_UK - March 2022 - RP/RC OLA performance	Prod
156492	TEAM	lhcb	urgent	reopened	22/06/2022 08:41	Problems using Webdav by Jobs to download and upload files	Ceph
156233	USER	none	less urgent	on hold	25/04/2022 15:57	Dashboard alarms for services in downtime	Prod
155819	USER	none	less urgent	in progress	14/06/2022 10:01	Verify network information in CRIC (RAL-LCG2)	Prod
155120	TEAM	lhcb	urgent	in progress	16/05/2022 12:27	Investigating Echo deletion problems	Ceph
142350	TEAM	lhcb	top priority	waiting for reply	22/06/2022 08:49	Problem accessing some LHCb files at RAL	Ceph

Closed GGUS tickets:

Ticket-ID	VO	Priority	Status	Last Update	Subject
157780	cms	urgent	unsolved	16/06/2022 19:08	SAM dataset inaccessible via /store/test/xrootd/T1_UK_RAL path
157607	none	urgent	closed	20/06/2022 23:59	CE token support campaign for WLCG sites (RAL-LCG2)
157248	cms	urgent	closed	20/06/2022 23:59	SAM test for CE no being executed at T1_UK_RAL
156843	dune	urgent	solved	21/06/2022 10:39	DUNE Antares testing
156333	dune	urgent	closed	15/06/2022 23:59	Rucio transfers slow and/or failing to RAL_ECHO

Farm Usage: <https://vande.gridpp.rl.ac.uk/next/d/XG5tyqMGz/batch-system-efficiency-plot?orgId=1&refresh=1m&from=now-7d&to=now>



GW usage https://vande.gridpp.rl.ac.uk/next/d/qIK_dflGz/echo-xrootd-gridftp-gw-host-view?orgId=1

data source: ceph-influxdb1 hosts: ceph-gw1.gridpp.rl.ac.uk + ceph-gw2.gridpp.rl.ac.uk + ceph-gw3.gridpp... interfaces: bond0

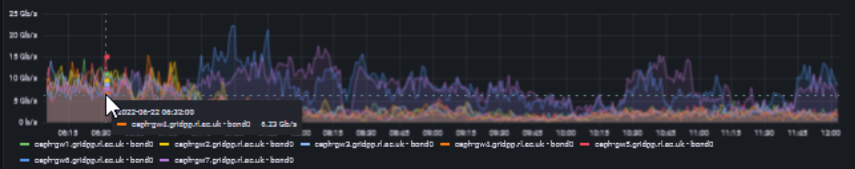
XRootD check status

ceph-gw1.gridpp.rl.ac.uk	ok
ceph-gw2.gridpp.rl.ac.uk	ok
ceph-gw3.gridpp.rl.ac.uk	ok
ceph-gw4.gridpp.rl.ac.uk	ok
ceph-gw5.gridpp.rl.ac.uk	ok

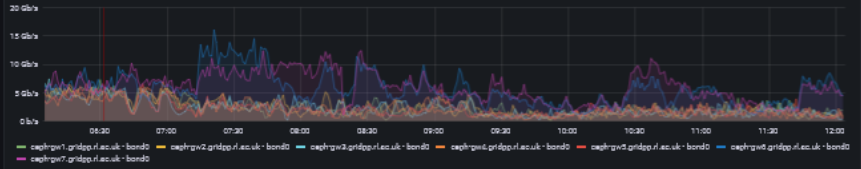
GridFTP check status

ceph-gw1.gridpp.rl.ac.uk	ok
ceph-gw2.gridpp.rl.ac.uk	ok
ceph-gw3.gridpp.rl.ac.uk	ok
ceph-gw4.gridpp.rl.ac.uk	ok
ceph-gw5.gridpp.rl.ac.uk	ok

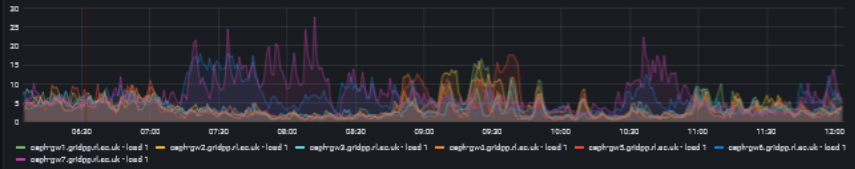
Bytes received



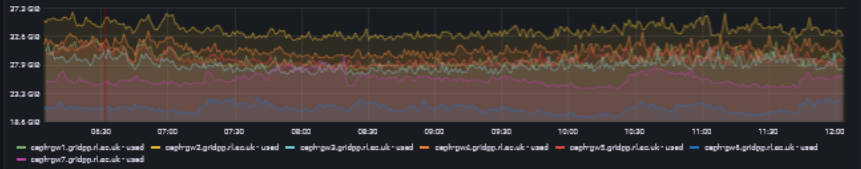
Bytes sent



Load



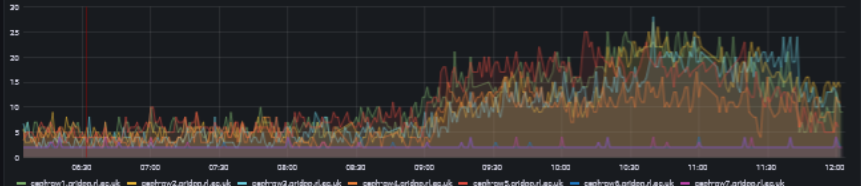
Memory



XRootD Connections



GridFTP Connections



Context switches

CMS: https://cmsst.web.cern.ch/sitereadiness/report.html#T1_UK_RAL

T1_UK_RAL																	
GGUS Tickets:																	
Downtimes:																	
													D	D	D		
SAM Status:	75%	99%	94%	100%	93%	94%	91%	97%	98%	20%	34%	65%	0%	n/a	100%	100%	
Hammer Cloud:	100%	100%	100%	100%	99%	100%	100%	100%	99%	73%	99%	100%	100%	?	99%	99%	
FTS Status:	100%	100%	0%	100%	100%	44%	0%	0%	0%	100%	100%	100%	100%	0%	0%	100%	
Site Readiness:	66%	87%	82%	75%	44%	93%	91%	54%	88%	13%	34%	64%	5%	0%	55%	97%	
Life Status:																	
Prod Status:																	
CRAB Status:																	
	6	7	8	9	10	11	12	13	14	15	16	17	18	19	20	21	22
	Jun																

= ok / enabled
 = warning / drain, test
 = error / disabled

? = unknown / not set
 WR = Waiting Room state
 M = Morgue state

D = Scheduled Downtime
 P = Partial Downtime
 U = Ad Hoc Downtime

information as of
2022-Jun-22 10:30:38 UTC

ATLAS: <http://hammercloud.cern.ch/hc/app/atlas/siteoverview/?site=RAL-LCG2&startTime=2022-02-16&endTime=2022-02-23&templateType=isGolden>

RAL

952 (functional) ...

883 (functional) ...

1184 (functional)...

1013 (functional)...

Template: 952 (functional) - AFT Eventloop 21.2.1 Analy

Time	0	1	2	3	4	5	6	7	8	9	10	11	12	13	14	15	16	17	18	19	20	21	22	23	Eff[%]	
22/06/22	c	c	s	s	s	s	s	c	m	c	c	c	c	c	c	c	c	c	c	c	c	c	c	c	c	98
21/06/22	c	c	c	c	c	c	c	c	c	c	c	c	s	s	s	c	c	c	c	c	c	c	c	c	c	100
20/06/22	s	s	s	s	s	s	s	s	s	s	s	s	s	s	s	s	s	s	s	s	s	s	s	s	s	100
19/06/22	s	s	s	s	s	s	s	s	s	s	s	s	s	s	s	s	s	s	s	s	s	s	s	s	s	0
18/06/22	s	s	s	s	s	s	s	s	s	s	s	s	s	s	s	s	s	s	s	s	s	s	s	s	s	0
17/06/22	c	c	c	c	c	c	c	c	c	c	c	c	c	c	c	c	c	c	s	s	s	s	s	s	s	100
16/06/22	c	c	c	c	c	c	c	c	c	c	c	c	c	c	c	c	c	c	c	c	c	c	c	c	c	100
15/06/22	c	c	c	c	c	c	c	c	c	c	c	c	c	c	c	c	c	c	c	c	c	c	c	c	c	100

Error Report

[+] Expand

RAL

952 (functional) ...

883 (functional) ...

1184 (functional)...

1013 (functional)...

Template: 1013 (functional) - AFT AthDerivation 21.2.33.0

Time	0	1	2	3	4	5	6	7	8	9	10	11	12	13	14	15	16	17	18	19	20	21	22	23	Eff[%]	
22/06/22	c	c	c	s	s	s	s	s	s	c	c	c	c	c	c	c	c	c	c	c	c	c	c	c	c	100
21/06/22	c	c	c	c	c	c	c	c	c	c	c	c	s	s	c	c	c	c	c	c	c	c	c	c	c	100
20/06/22	s	s	s	s	s	s	s	s	s	s	s	s	s	s	s	s	s	s	s	s	s	s	s	s	s	100
19/06/22	s	s	s	s	s	s	s	s	s	s	s	s	s	s	s	s	s	s	s	s	s	s	s	s	s	0
18/06/22	s	s	s	s	s	s	s	s	s	s	s	s	s	s	s	s	s	s	s	s	s	s	s	s	s	0
17/06/22	c	c	c	c	c	c	c	c	c	c	c	s	c	s	c	c	c	c	c	c	c	c	c	c	c	100
16/06/22	c	c	c	s	c	s	s	c	c	c	c	c	c	c	c	s	c	c	s	c	s	f	c	c	c	98
15/06/22	c	c	c	c	c	c	c	c	c	c	c	c	s	c	c	c	s	c	s	c	c	c	c	c	c	100

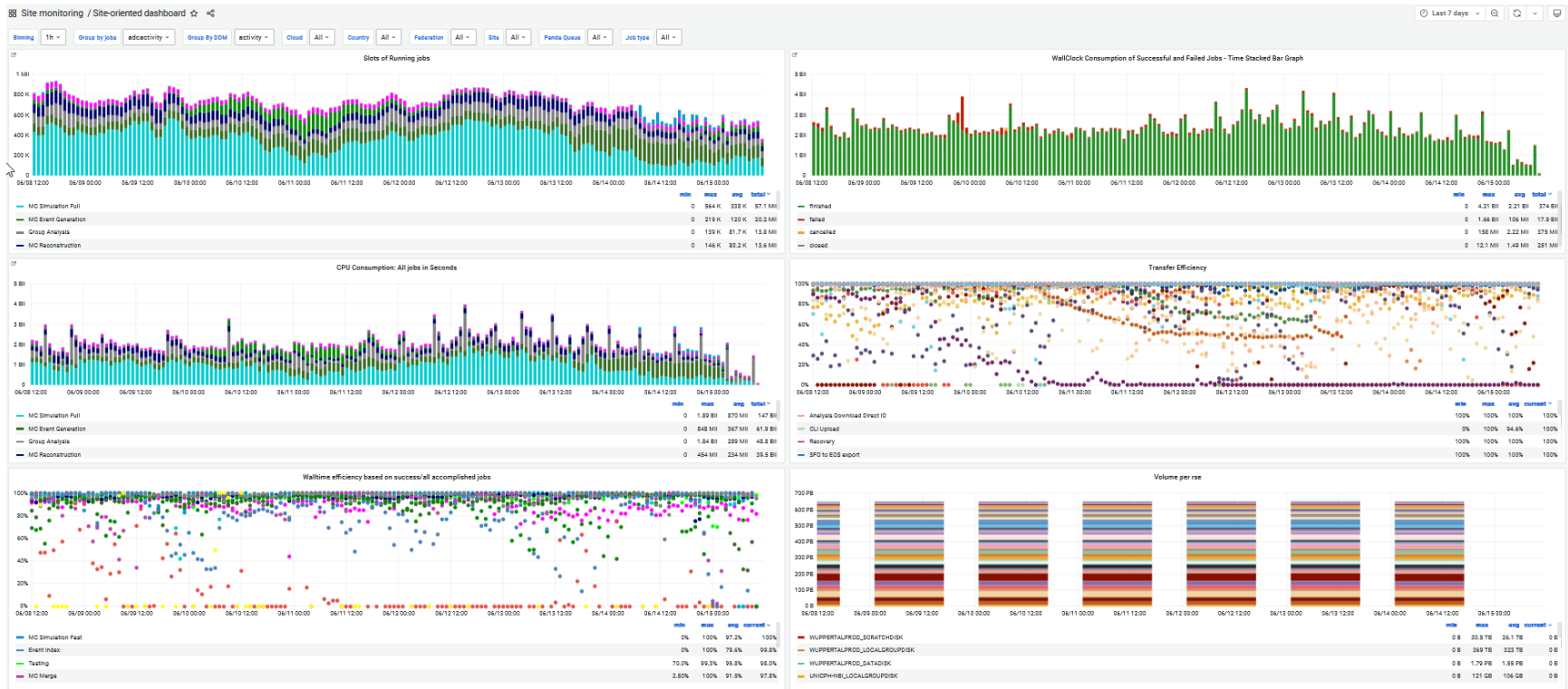
Error Report

[+] Expand

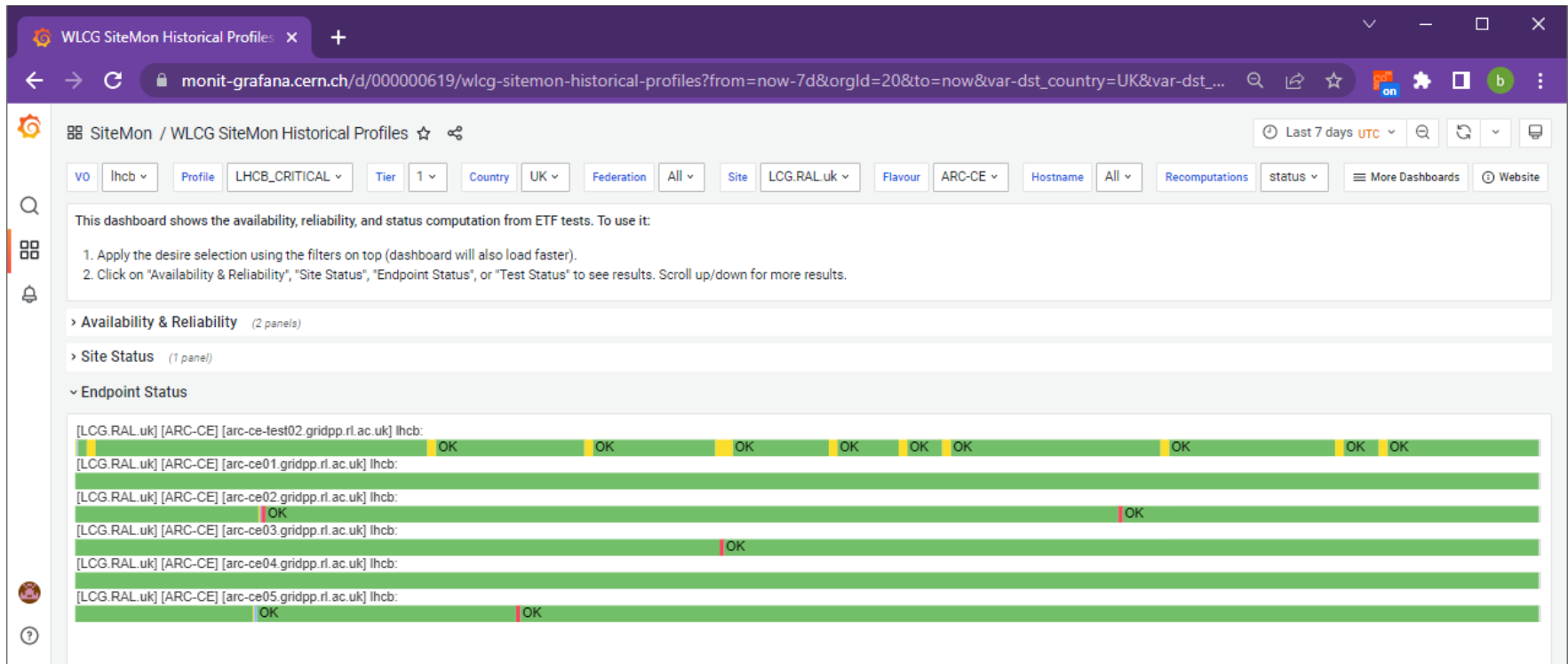
RAL

952 (functional) ...	883 (functional) ...	1184 (functional)...	1013 (functional)...																																																		
Template: 1184 (functional) - PFT mc15 Sim_tf 21.0.15 FC																																																					
Time	0	1	2	3	4	5	6	7	8	9	10	11	12	13	14	15	16	17	18	19	20	21	22	23	Eff[%]																												
22/06/22	c	c	c	s	s	s	s	s	c	c	s	c	c	c	c	c	c	c	c	c	c	c	m	0	0	0	0	0	0	0	0	0	0	0	0	0	0	0	0	0	0	0	0	0	0	0	0	0	0	0	0	100	
21/06/22	c	c	c	c	c	c	c	c	c	c	s	s	s	s	s	s	s	s	c	c	c	c	s	s	s	s	s	s	s	c	c	c	c	c	c	c	c	c	c	c	c	c	c	c	c	c	c	c	c	c	100		
20/06/22	s	s	s	s	s	s	s	s	s	s	s	s	s	s	s	s	s	s	s	s	s	s	c	c	c	c	c	c	c	c	c	c	c	c	c	c	c	c	c	c	c	c	c	c	c	c	c	c	c	c	c	c	100
19/06/22	s	s	s	s	s	s	s	s	s	s	s	s	s	s	s	s	s	s	s	s	s	s	s	s	s	s	s	s	s	s	s	s	s	s	s	s	s	s	s	s	s	s	s	s	s	s	s	s	s	s	s	s	0
18/06/22	s	s	s	s	s	s	s	s	s	s	s	s	s	s	s	s	s	s	s	s	s	s	s	s	s	s	s	s	s	s	s	s	s	s	s	s	s	s	s	s	s	s	s	s	s	s	s	s	s	s	s	0	
17/06/22	c	c	c	c	c	c	c	c	c	c	c	c	c	c	c	c	c	c	c	c	c	c	c	c	c	c	c	c	c	c	s	c	c	c	c	c	s	s	s	s	s	s	s	s	s	s	s	s	s	s	100		
16/06/22	c	c	s	s	c	c	c	c	c	c	c	c	c	c	c	c	s	c	c	c	c	c	c	s	c	c	c	c	c	c	c	c	c	c	c	c	c	c	c	c	c	c	s	s	s	c	c	c	c	100			
15/06/22	0	0	c	c	s	c	c	0	0	s	c	c	0	0	s	c	0	s	c	c	c	s	c	0	s	c	c	c	s	c	c	c	c	c	c	c	c	c	c	c	c	c	c	c	c	c	c	c	c	c	100		
Error Report																								[+] Expand																													

Site Dashboard: https://monit-grafana.cern.ch/d/D26vElGGz/site-oriented-dashboard?orgId=17&var-bin=1h&var-groupby_jobs=adcactivity&var-groupby_ddm=activity&var-cloud=All&var-country=All&var-federation=All&var-site=RAL-LCG2&var-computingsite=All&var-jobtype=All&var-es_division_factor=1&var-measurement=ddm_transfer_1h



LHCB: https://monit-grafana.cern.ch/d/000000619/wlwg-sitemon-historical-profiles?orgId=20&from=now-30d&to=now&var-vo=lhcb&var-profile=LHCB_CRITICAL&var-dst_tier=1&var-dst_country=UK&var-dst_federation=All&var-dst_experiment=site=LCG.RAL.uk&var-service_flavour=ARC-CE&var-dst_hostname=All&var-recomputation=status



Atlas Report

CMS Report

LHCb Report

LSST Report