





Powering Tests Coordination meeting #103

A. Apollonio, M. Solfaroli

04.03.2022

General info

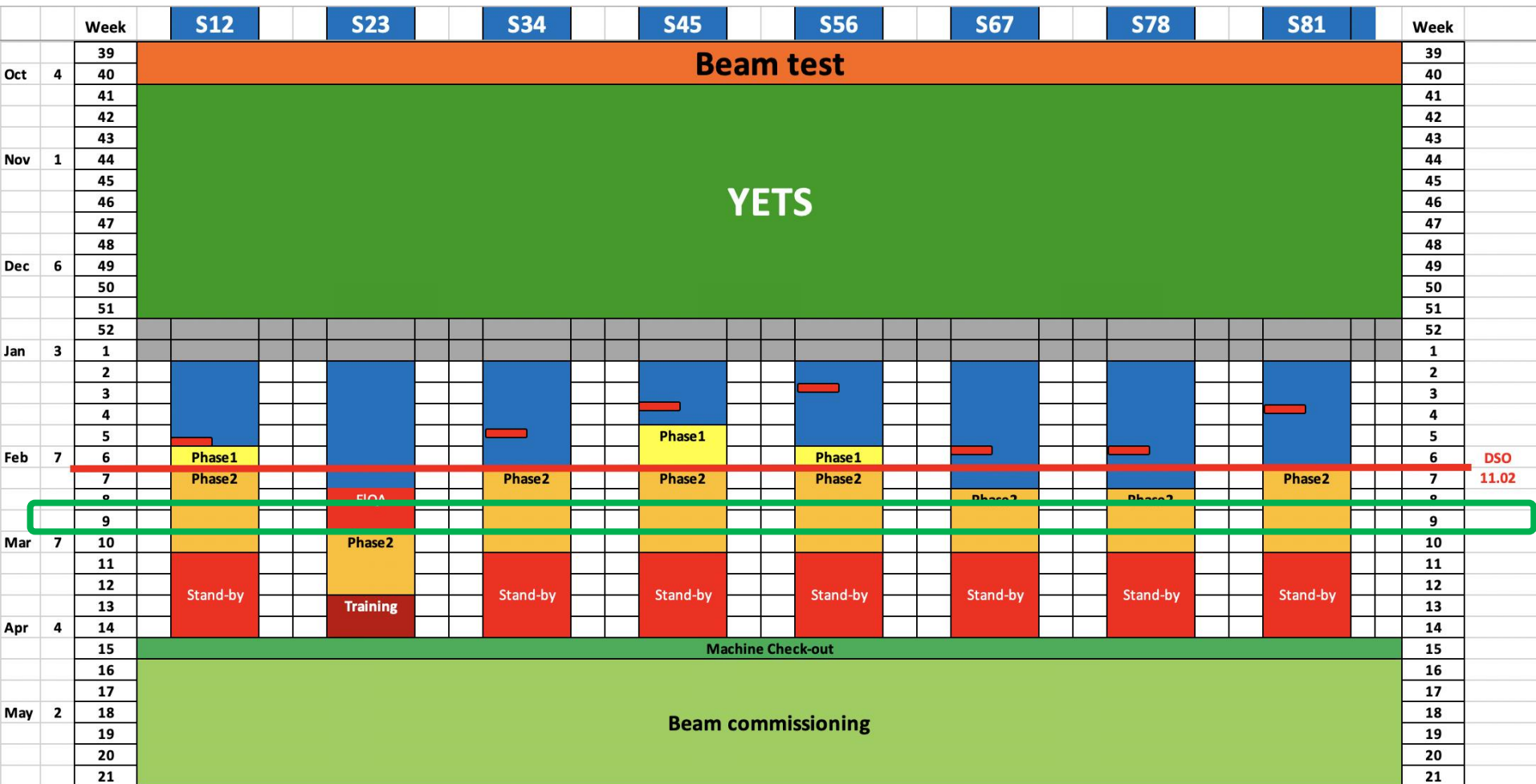
[Link to access constraints](#)

- **No access in IP2 and IP3 today** due to UPS redundant tests
- **No access due to lift maintenance today PM85 6-8**
- **Next week** access possible everyday between 9am and 5pm, **except Thursday (machine closed)**
- **Tuesday: compensator switch ON in P8 → potentially loss of cryo conditions**
- **Wednesday: switch to one cryo plant in P6 → loss of cryo conditions for 24h**



Powering tests planning

 EIQA



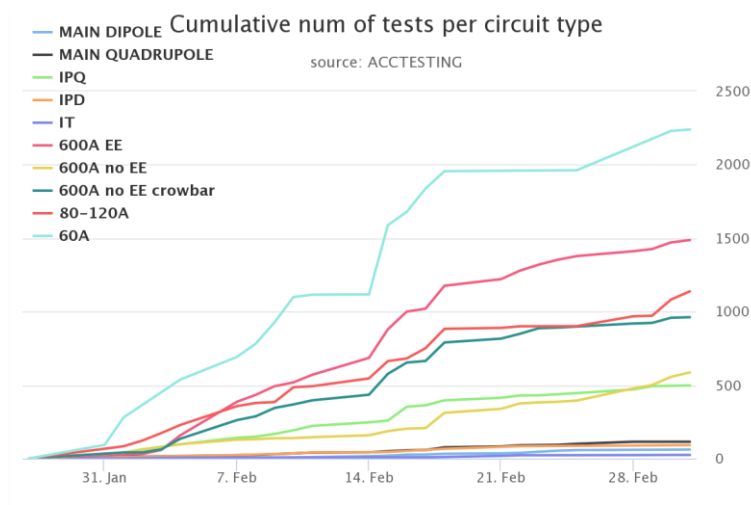
DSO
11.02

What we do

		WK 7			WK 8						WK 9							
		CRYO-OK	19	20	21.02	22.02	23.02	24.02	25.02	26	27	28.02	1.03	2.03	3.03	4.03	5	6
S12	XR1			cryo			sealing					QH						
	LR1			cryo											BS			
	A12			cryo														
	ML2			cryo										ZDC	ZDC			
	XL2			cryo	QH													
S23	XR2			EIQA									BS					
	MR2			EIQA								ZDC	ZDC				UPS	
	A23			EIQA														
S34	A34																	
	ML4																	
S45	MR4																	
	A45																	
	LL5																	
	XL5																	
S56	XR5			UPS														
	LR5																	
	A56																	
	ML6																	
S67	MR6																	
	A67																	
S78	A78																	
	ML8						BS											
	XL8																	
S81	XR8																	
	MR8																	
	A81																	
	ML1											BS						
	XL1						sealing					QH						

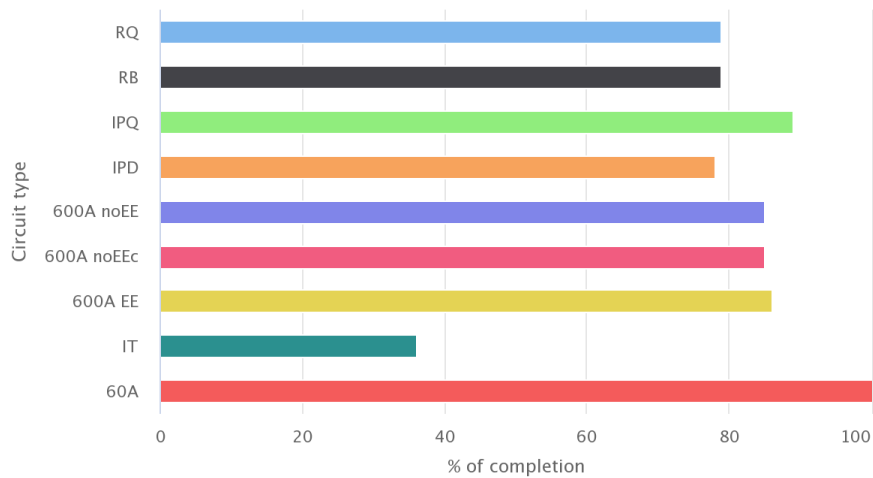


Powering tests advancement



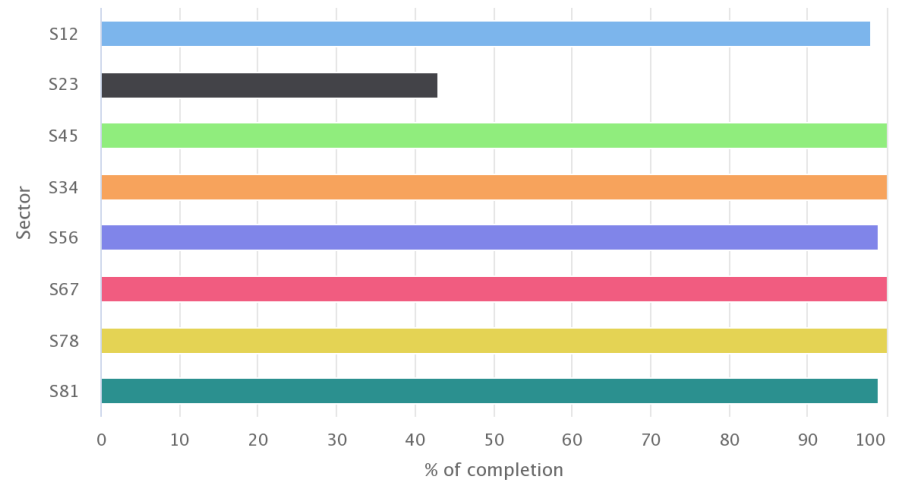
Executed tests per circuit type

Source: ACCTESTING



Executed tests per sector

Source: ACCTESTING



Sector 12

- **RB:** commissioned
- **RQD/F:** commissioned
- **IPQ/D:** commissioned, except:
 - RD1.L2 to be released by QPS
- **All other circuits:** commissioned
- **ITs:**
 - 600A commissioned
 - RQX.R1, RQX.L2 to be released by QPS

Sector 23

Powering phase 1 started on Wednesday

- 60A: commissioned, except RCBH13.L3B2 + RCBH24.L3B1 PCC to be analysed by EPC
- 80/120A: PNO.d1 ongoing
- 600A: PCC performed, QDS.integrity to be signed

QHs switched ON for IPQs and IT (UPS tests today)

Tentative plan for main circuits:

QHs switched ON on Monday

Monday evening trigger tests + 300V discharges

Tuesday: 900V QH discharges

Wed: start powering

Sector 34

- **RB:** commissioned
- **RQD/F:** commissioned
- **IPQs:** commissioned
- **600 A:** completed except
 - RQTL7.R3B1: 6 trips during PNO.a3, EPC intervention next week
- **60 A:** completed
 - RCBV24.L4B1 – high resistance - EIQA investigation revealed no problem in the cold part of the circuit. Maybe a problem with DC cables or PC?

Sector 45

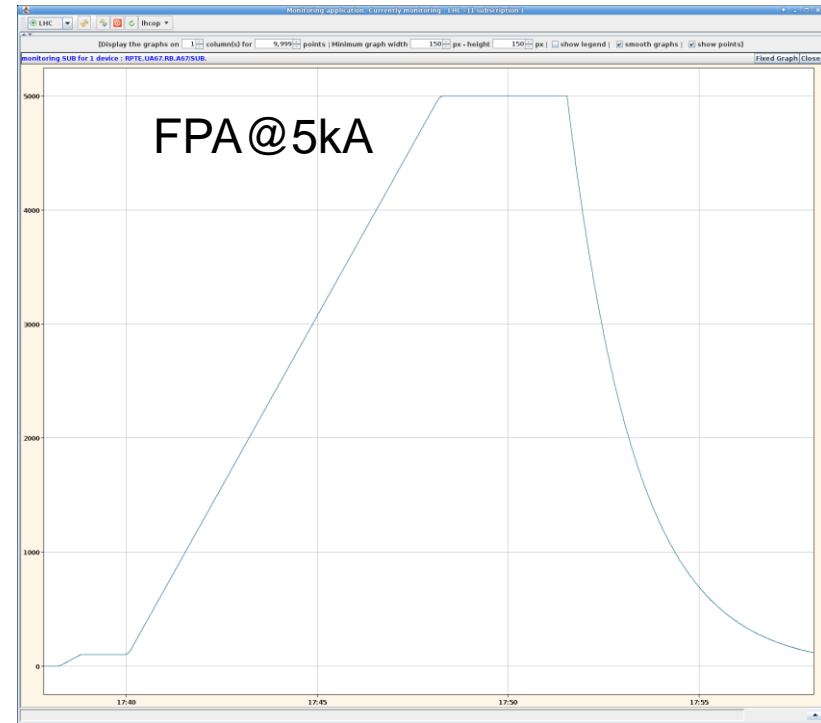
- **All circuits commissioned**
 - RCBH22.R4B1: excessive lead R – joint intervention MPE/MSC – test repeated, automatic analysis passed

Sector 56

- **RB:** commissioned (1 quench on FT after almost 40 min on magnet C13R5)
- **RQD/F:** commissioned
- **RQX.R5:** UPS tests to be repeated, scheduled next Tue 8:30-9h
- **Other circuits:** commissioned

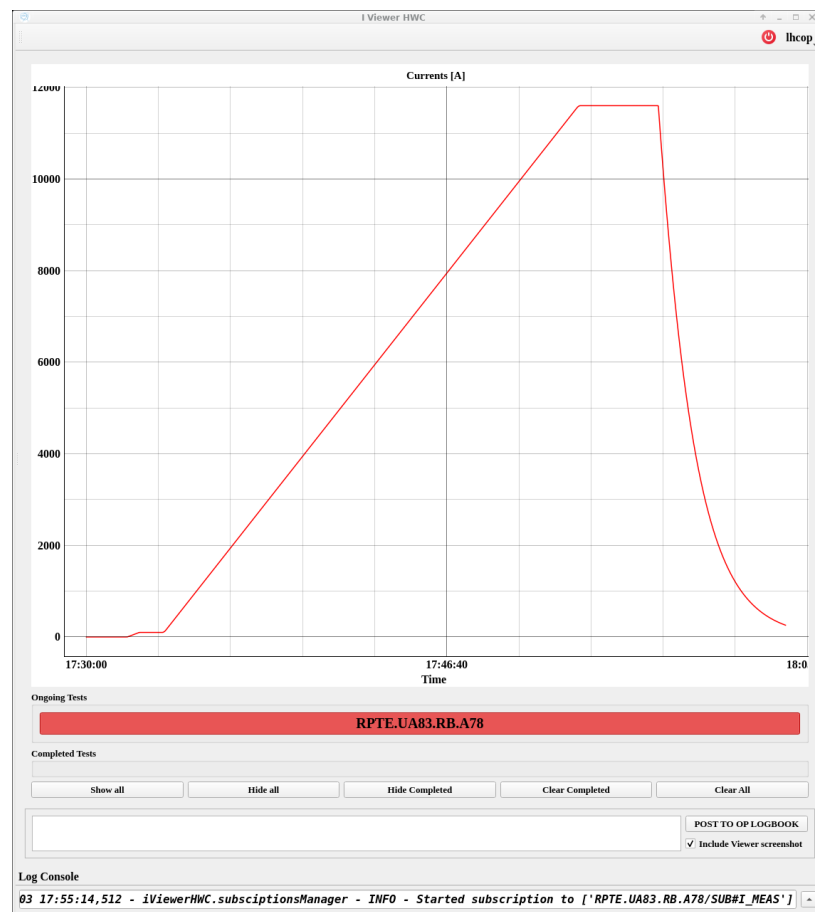
Sector 67

- **RB:**
 - Heater induced quench when opening second EE on C21R6. QPS 200mV board installed in this location
 - FPA@5kA with iQPS snapshots was performed upon request from MP3 – **ok to repeat PNO.b2**
- **RQD/F:** commissioned
- **600 A:** commissioned
- **60 A:** completed
 - RCBV28.R6B2: lead R too high – joint intervention
MPE/MSC – test repeated, automatic analysis passed



Sector 78

- **RB:** PNO.b2 performed last Friday, missing nQPS PM files. Repeated with shorter plateau - ok
- **RQD/RQF:** commissioned
- **IPQ:** commissioned
- **600 A:** almost completed
 - RQ6.R7B1 FPA unsafe
 - RQTF.A78B1: qst quench during PNO.d3



Sector 81 – PHASE1

- **RB:** commissioned (1 quench after few min at flattop)
- **RQD/F:** commissioned
- **IPQ/D:** commissioned
- **600 A:** almost completed
- **XR8:** completed
- **XL1:**
 - **RQX** to be released by QPS team
 - 600A almost completed

