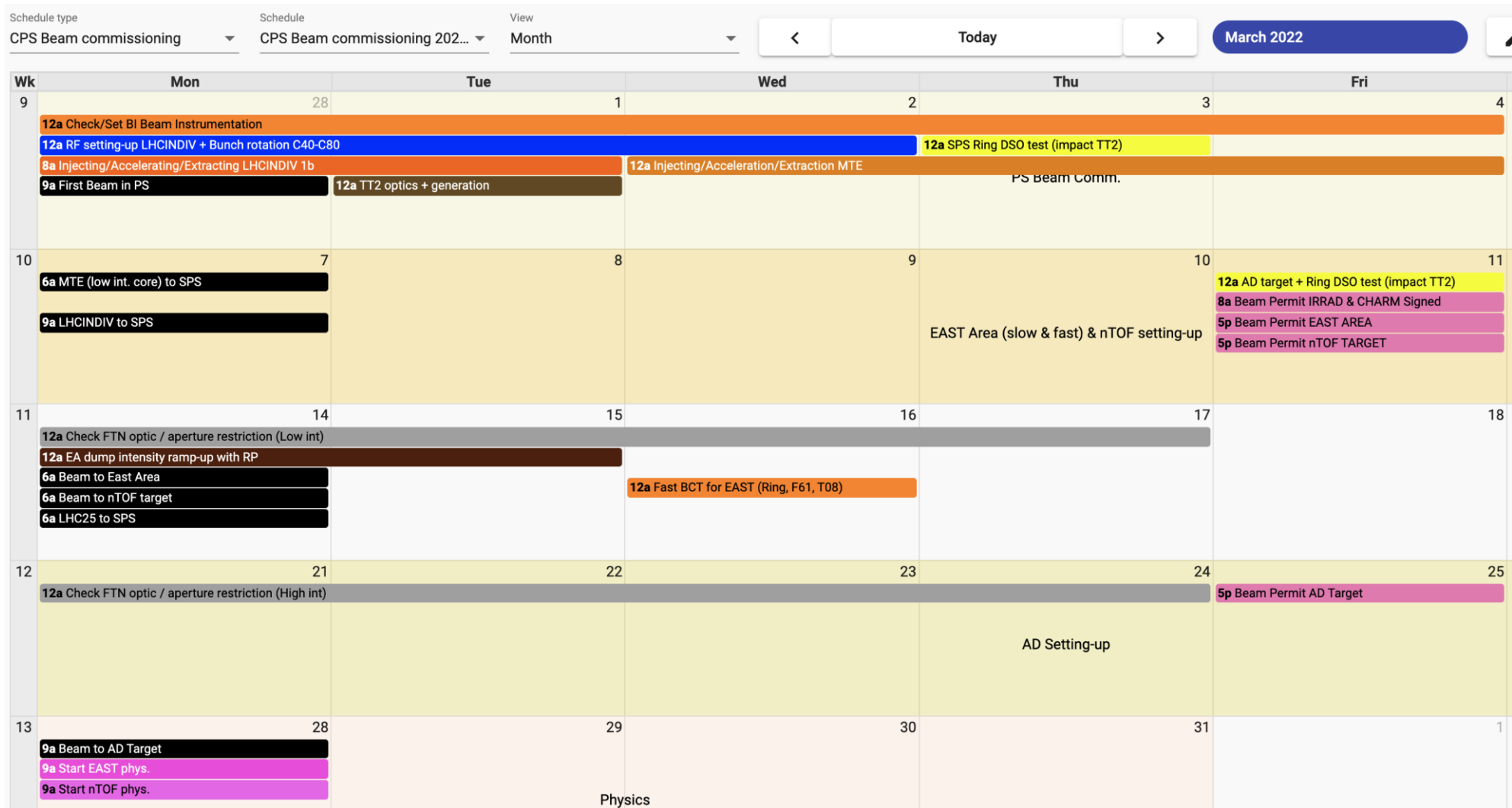


OP Planning

Thanks to D. Cotte and A. Huschauer



Changes since planning was presented:

- Most probably beam will be taken already from Friday 25th since the hw commissioning is well in advance
- Monday morning a few hours beam stop for DSO tests

Beam parameters for beam commissioning in PS

Week 2022	Beams Milestone	N_b [p/p]	Comment
9	LHCPILOT/INDIV	$1.2 \cdot 10^{11}$	Check systems, PU, RF, start 40/80 MHz RF, transition crossing
	MTE @ low intensity and various configurations (island/core/both)	$0.5 \cdot 10^{12}$ $1 \cdot 10^{13}$	optimise extraction bump and check extraction efficiency 200MHz cavity phasing ?
10	TOF @ low intensity	$< 2 \cdot 10^{12}$	To D3. (check cycle in PS, Bunch Rotation, TT2)
	EAST beams	$10 \cdot 10^{10}$ $60 \cdot 10^{10}$	Setting-up EAST cycles
	LHC25 Multi-bunch beam	$1.2 \cdot 10^{11}$	RF splitting, bunch rotation
11-12	TOF @low + high intensity to FTN	Up to $8.5 \cdot 10^{12}$	Check TT2-FTN optics, Check Beam size on target, SIS interlock (Physics start W13)
11	EAST beams (Fast and Slow extraction) to EAST	Int. Ramp-up	Fast extraction for BCT calibration, Slow Extraction for RP intensity ramp-up on the dump. (Physics start W13)
~13	AD beam to FTA	Up to $1600 \cdot 10^{10}$	Check BTI247/8, FTA losses with new BLM. (Pbar to ELENA W15)



Beam Instrumentation (Priority List)

- **For the first beam 28th of February. (priority 1)**

- BTP :

- BPM00,10,20,30,60, BCT10

- PS-Ring :

- BPM(00to97) for PS orbit, Sensitive BPM83/93, BTV42, BSGF42, Ring BCT, BLM(1to100), Diamond BLMD0, WCM95, WCM03(x2)

- **For the first beam in TT2.(priority 2)**

- TT2 :

- BPM (Low and Wide band), BLM(F16), BCT(F16), BTV(F16), 3xBSGs, 3xBFSs

- **Later. (priority 3)**

- BGI82/84, BWS54/64/65/68/85, RAL12 + SEM48,52,54, Wideband PU94/00.