

Solid-state Nanopore: A Nanoelectronic Sensor for Single-Molecule Diagnostics

Buddini Karawdeniya (Ph.D.)

Research Fellow and Program Coordinator, ANU Grand Challenge 'Our Health in Our Hands' (OHIOH)

Department of Electronic Materials Engineering

Research School of Physics

Australian National University



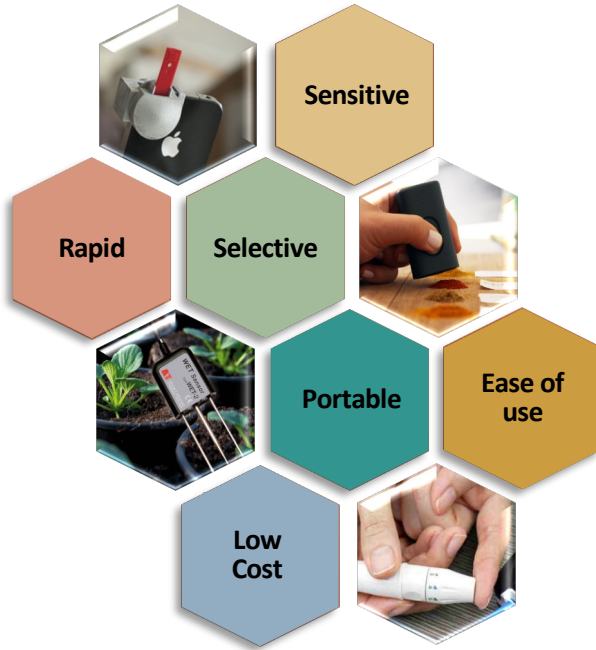
Australian
National
University



Development of Sensing Platforms



Pharmaceutical quality assurance



Water and soil quality

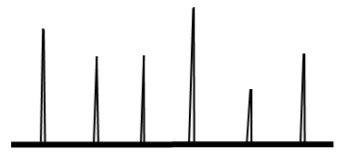
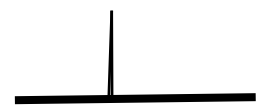
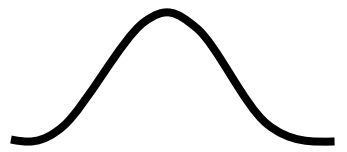
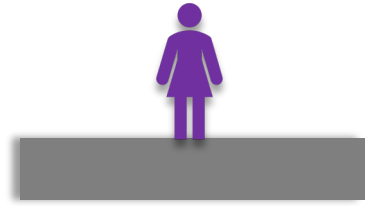
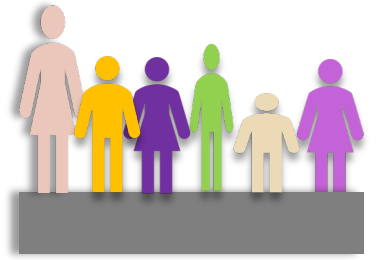
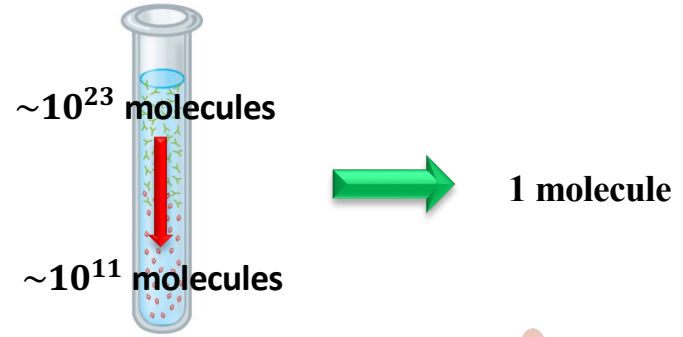


Disease diagnosis

Food quality



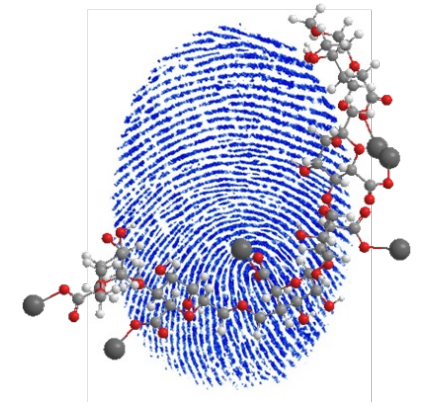
Single-Molecule Sensing



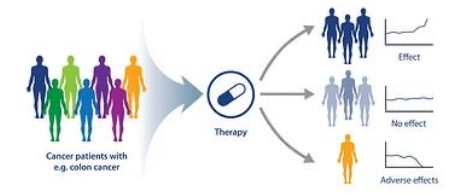
Conventional Sensing
Many people one signal

Single Molecule Detector
One person-one signal

Single Molecule Sensor
Many people-many single molecule signals



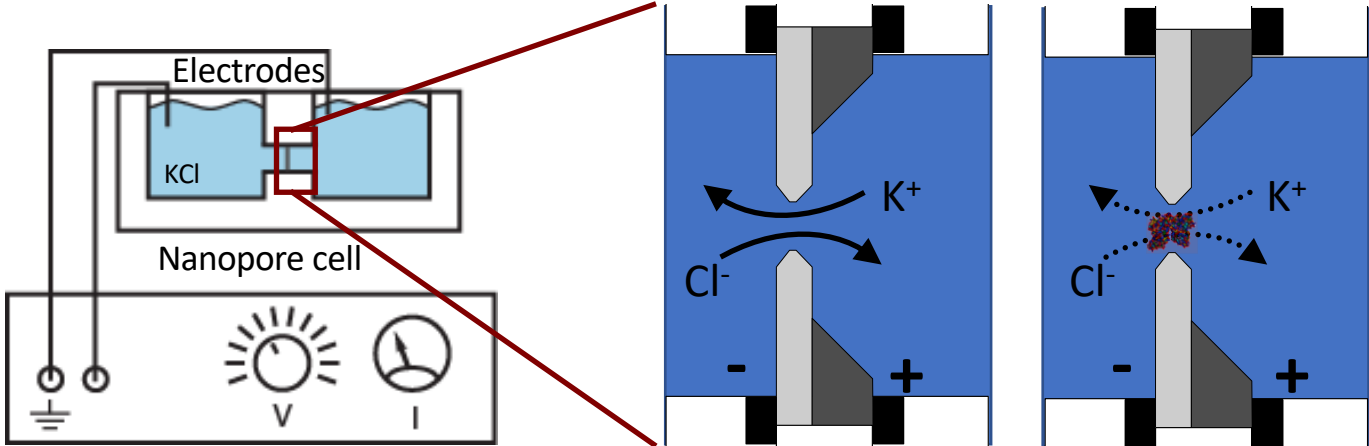
Current Medicine
One Treatment Fits All



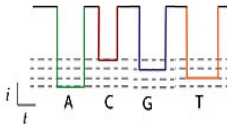
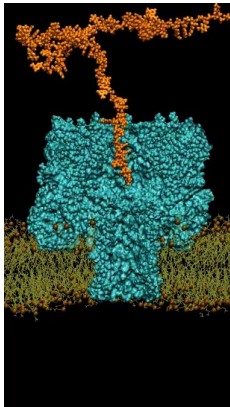
Future Medicine
More Personalized Diagnostics



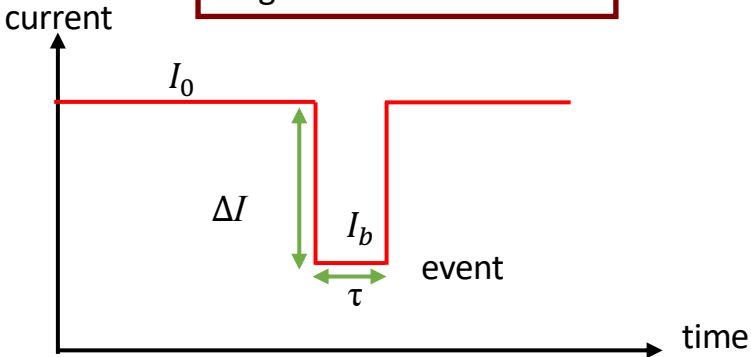
Nanopore Operation and Detection



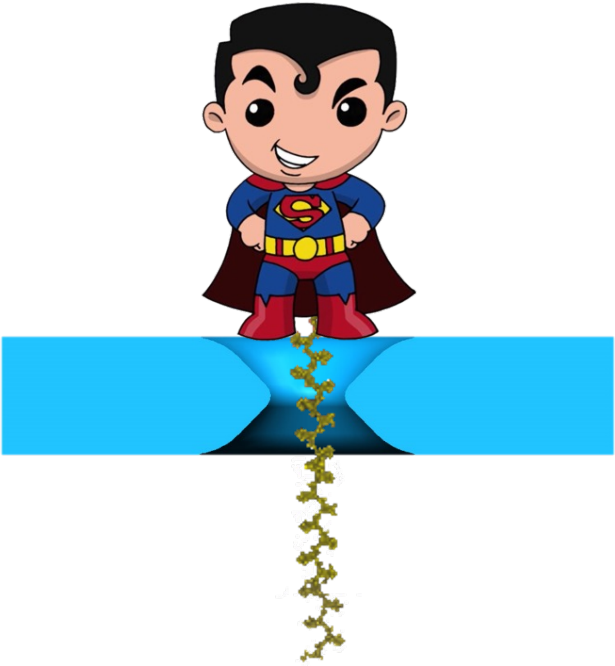
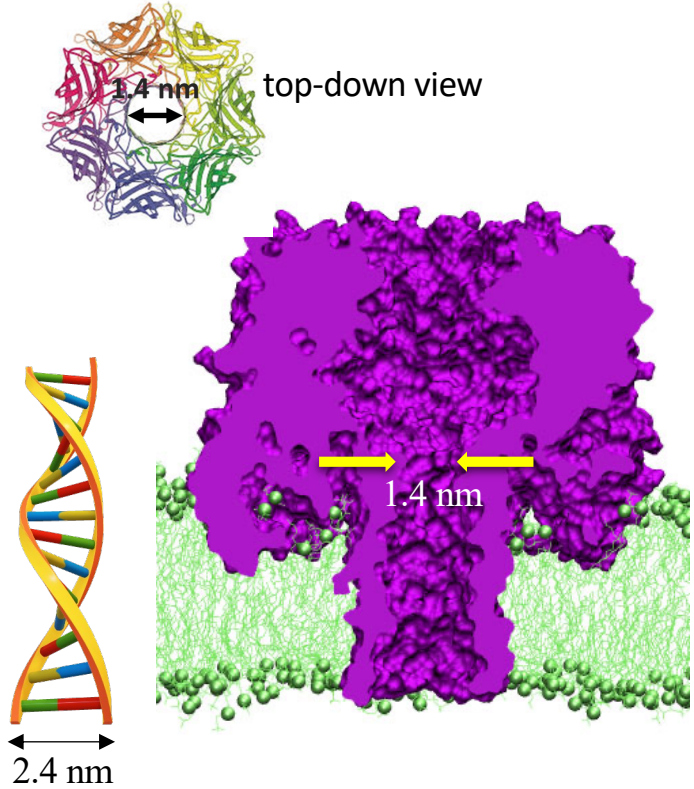
Patch clamp amplifier



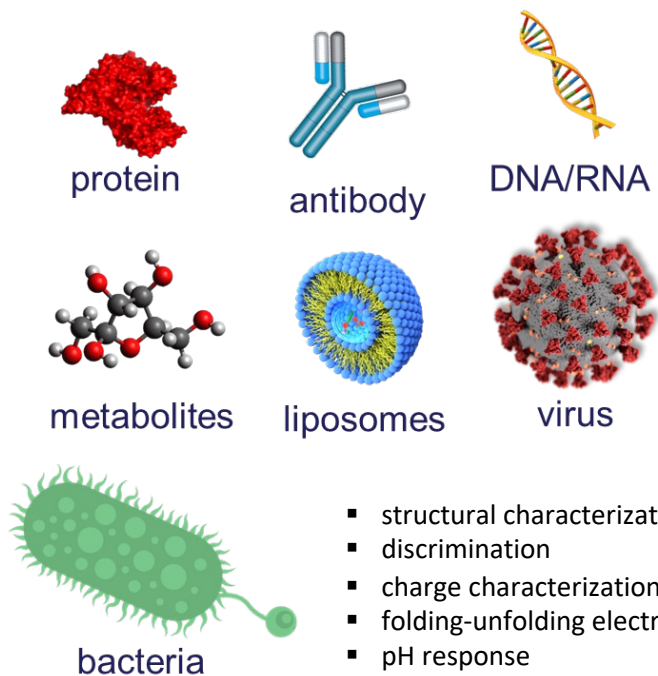
single molecule detection



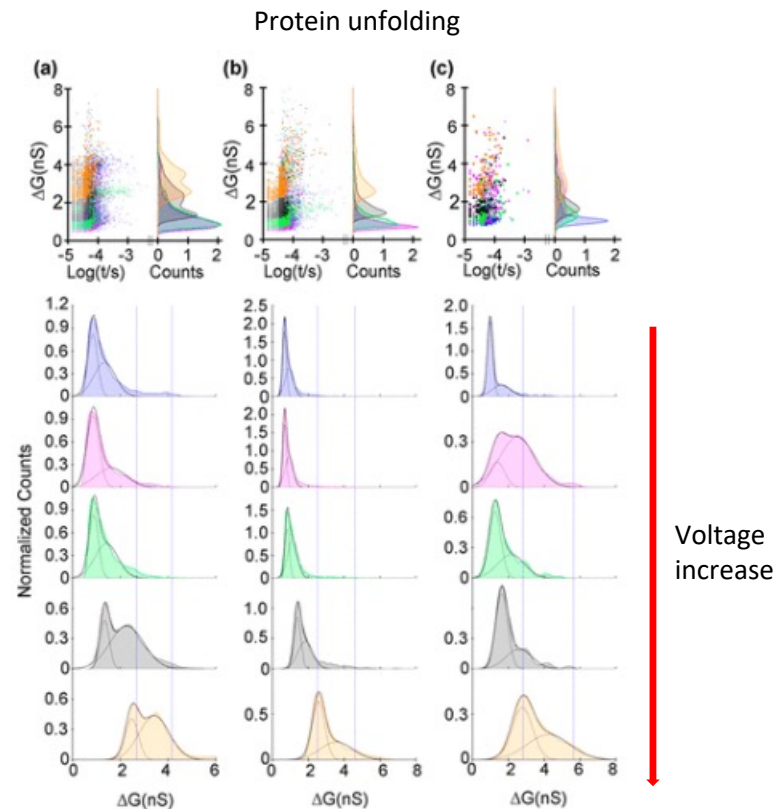
Why Solid-state Nanopores?



A Nanoelectronic Sensor Going Big



- structural characterization/sequencing
- discrimination
- charge characterization
- folding-unfolding electrokinetics
- pH response
- electrodeformation
- bond strengths



Heparin Contamination

– How do I know if my reality is the same as everyone else's?

– Why are we here?

– What's my purpose?

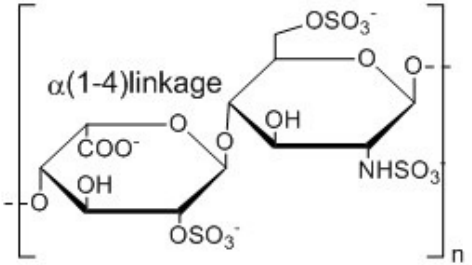
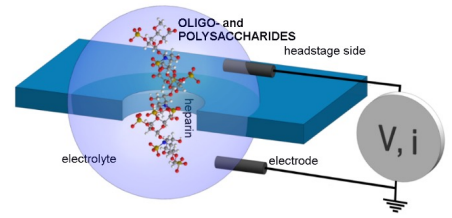
– What is the meaning of life?

COMPLEX CARBOHYDRATES

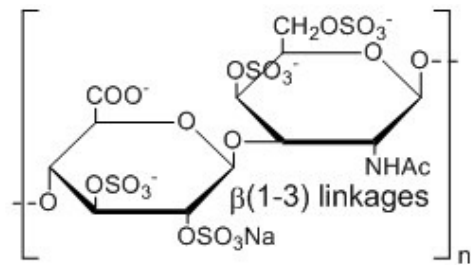
SMART IS THE NEW SEXY



Anticoagulant drug

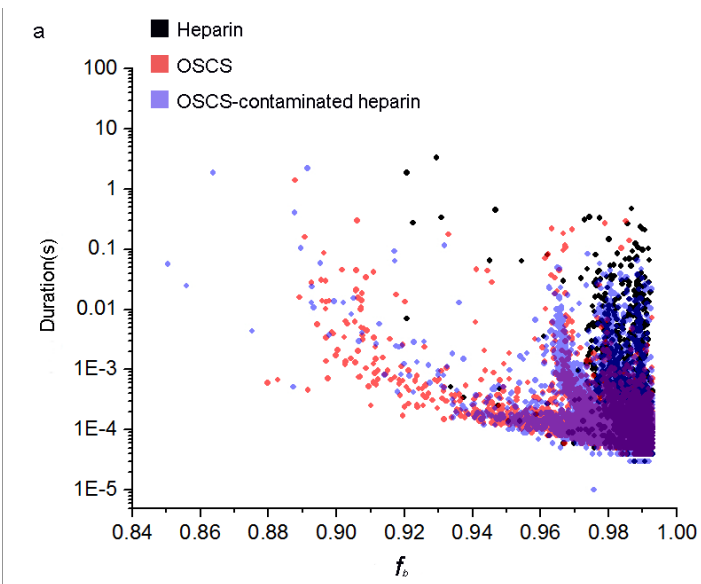


Heparin
polymer of 2-O-sulfo-iduronic acid
and 6-O-sulfo-N-sulfo-glucosamine

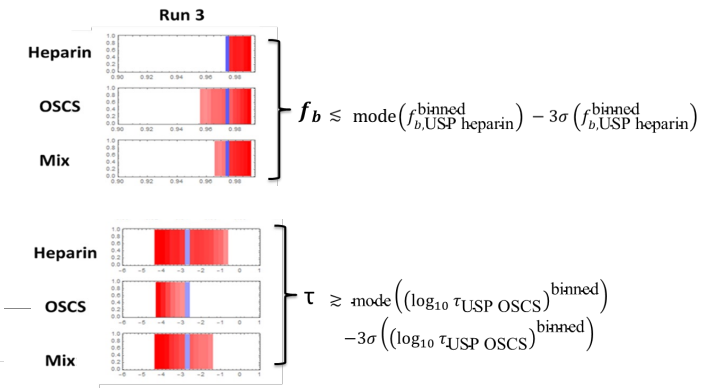
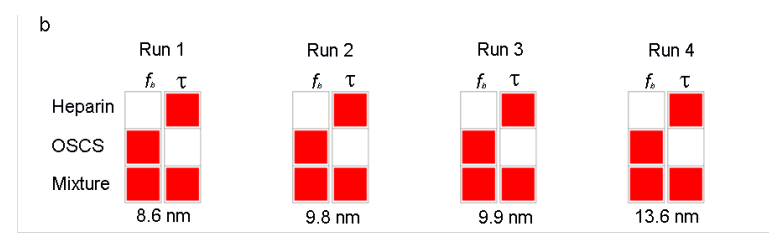


Oversulfated Chondroitin Sulfate
polymer of D-glucuronic acid and N-Acetyl-galactosamine-4 or 6-sulfate

OSCS Contaminant Detection in Heparin



<https://ahdc.vet.cornell.edu/sects/coag/test/heparin.cfm>

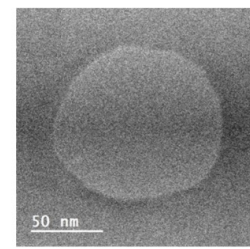
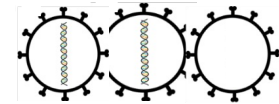
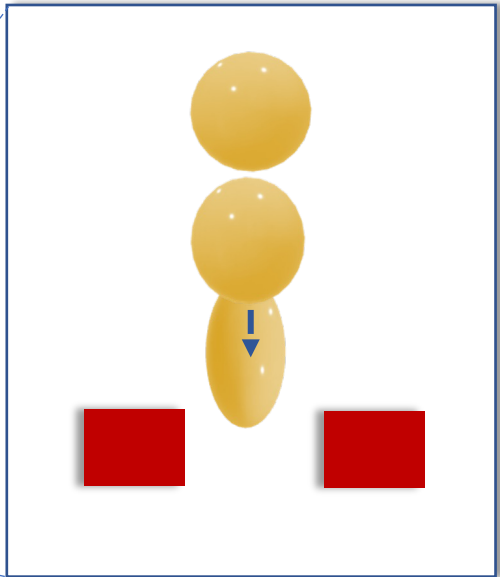
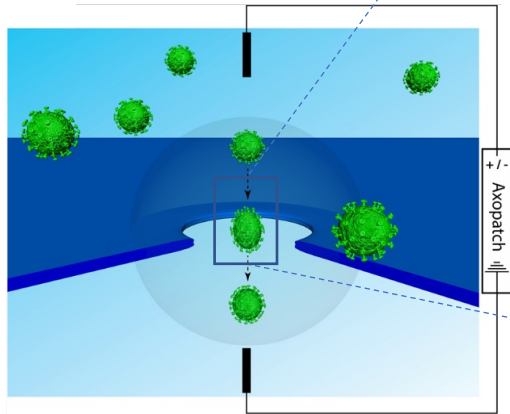
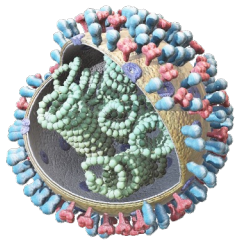


Someone sneezes in **2019**:
“Bless you”

Someone sneezes in **2020**:



Discriminating Virus with Different Therapeutic Cargo

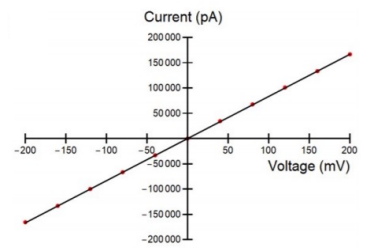


<https://news.wjct.org/>
First Gene Therapy For Inherited Disease Gets FDA Approval

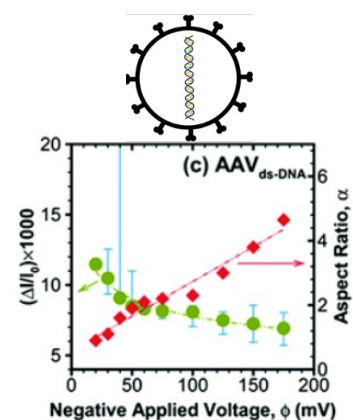
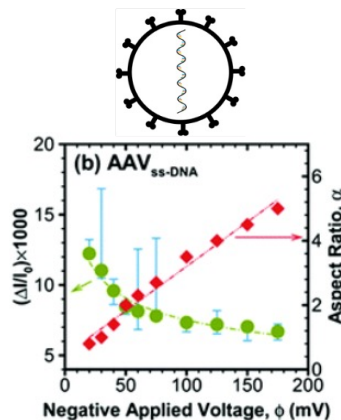
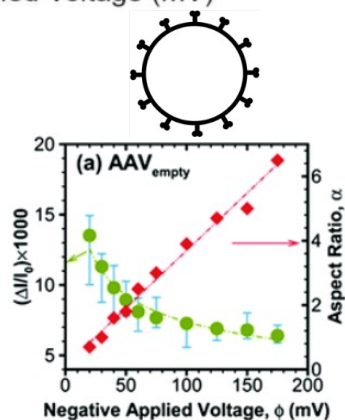
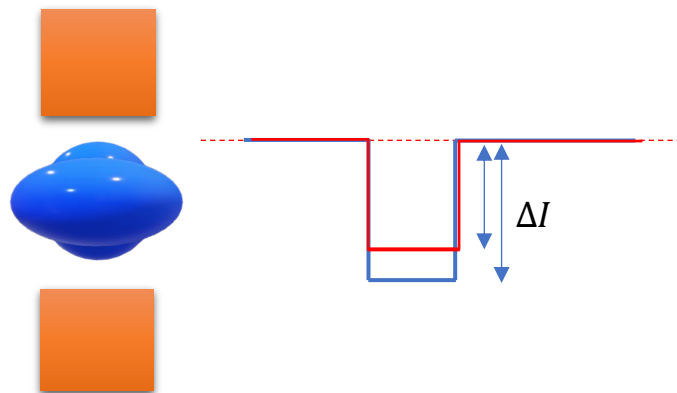
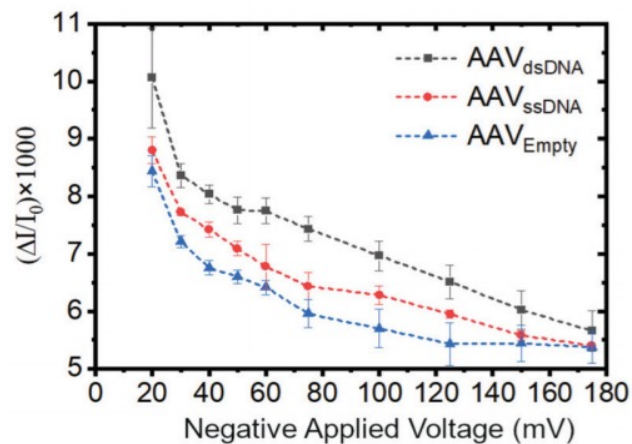


The Food and Drug Administration approved Luturna, a gene therapy developed by Spark Therapeutics, to treat an inherited form of ataxia.

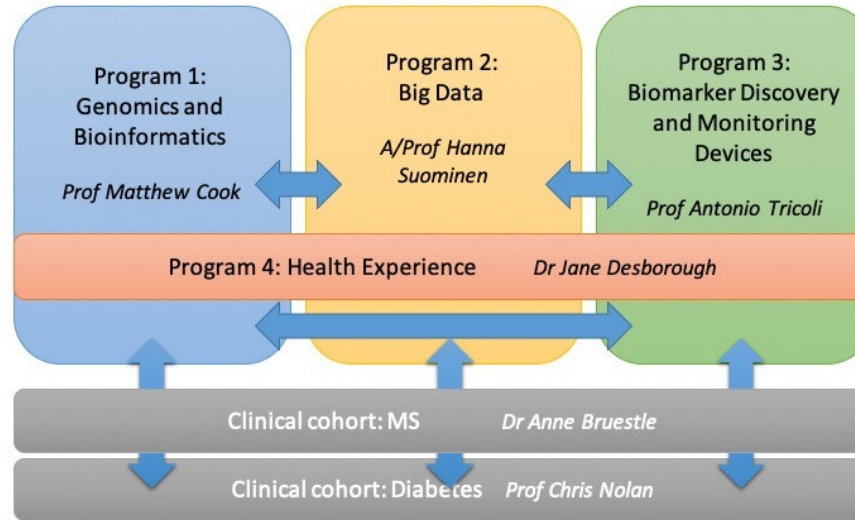
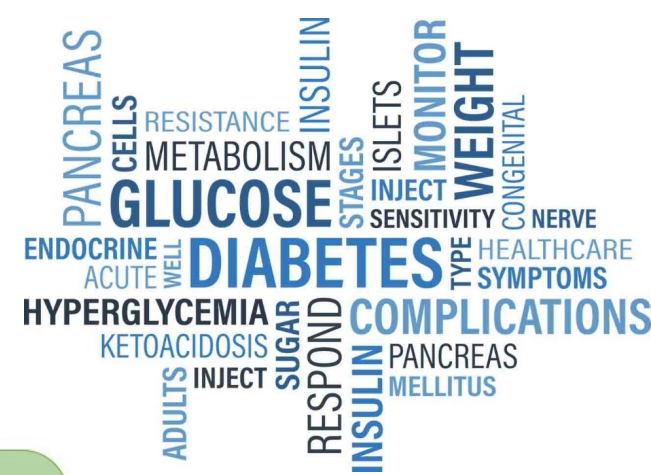
The Food and Drug Administration Tuesday approved the first gene therapy to treat an inherited disease.
 The treatment is called Luturna, a genetically modified virus that ferries a healthy gene into the eyes of patients born with **retinal dystrophy**, a rare condition that destroys cells in the retina needed for healthy vision.



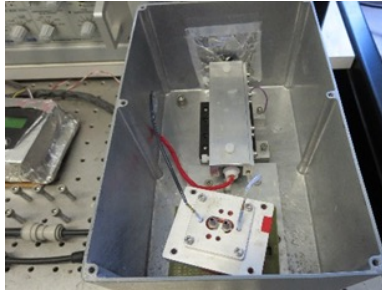
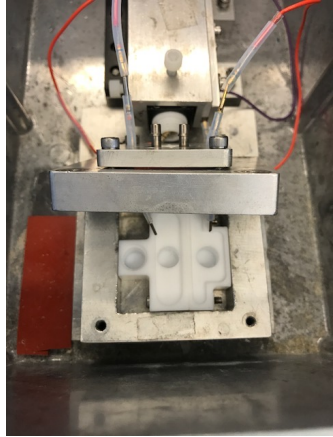
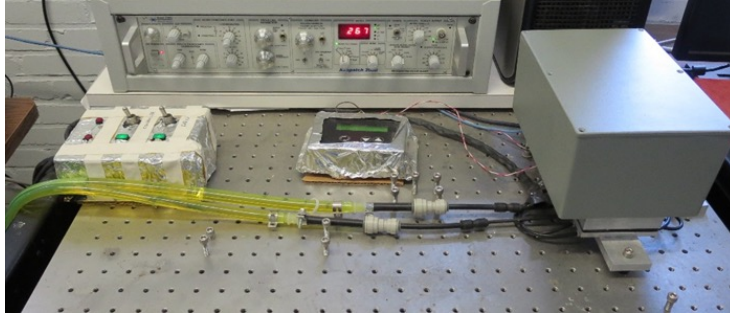
Characterising Virus with Different Genetic Cargo



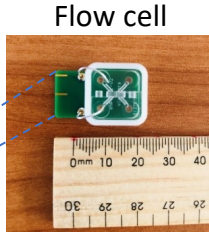
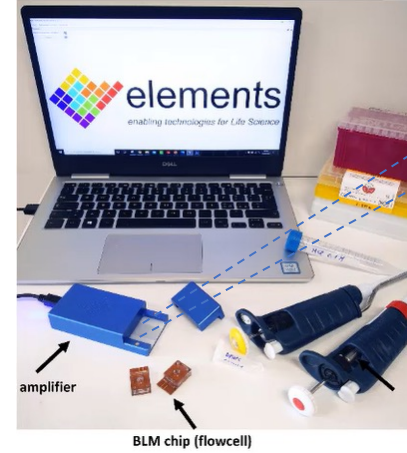
OHIOH Grand Challenge



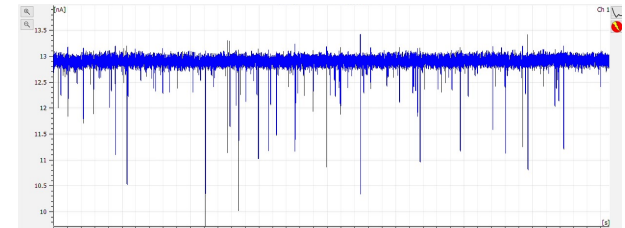
Nanopore Instrumentation



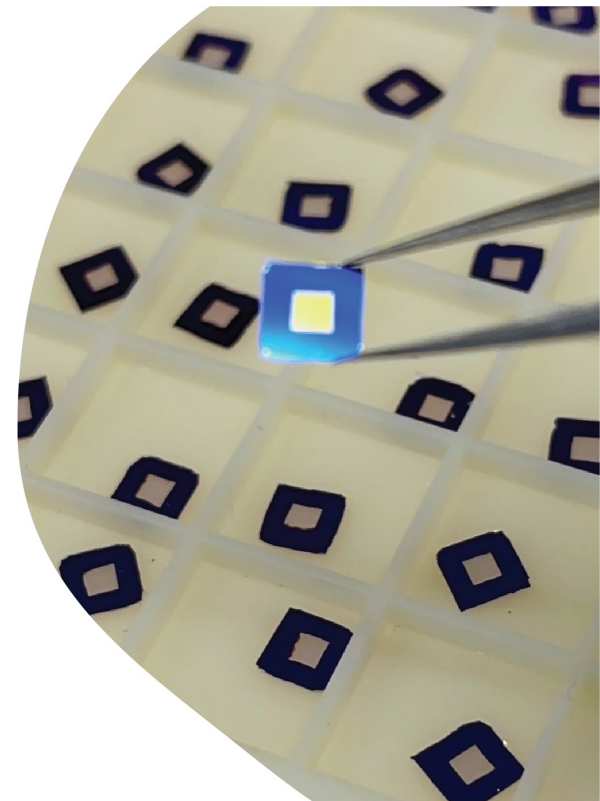
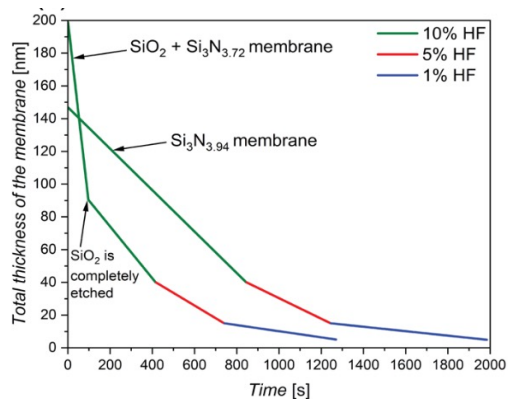
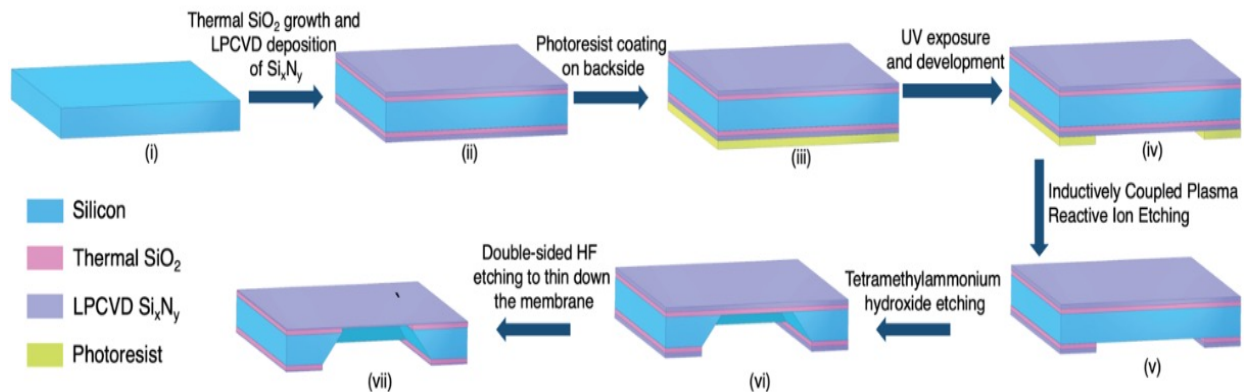
- table-top instruments
- not portable



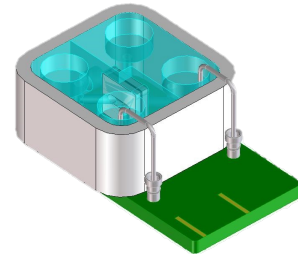
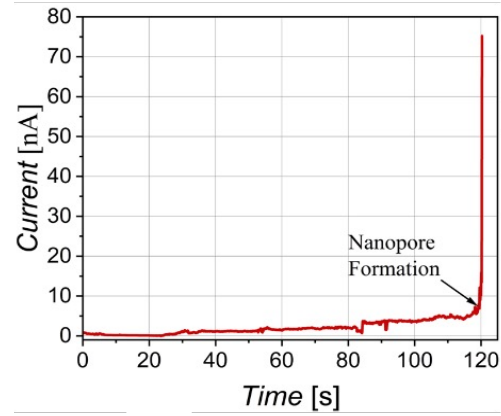
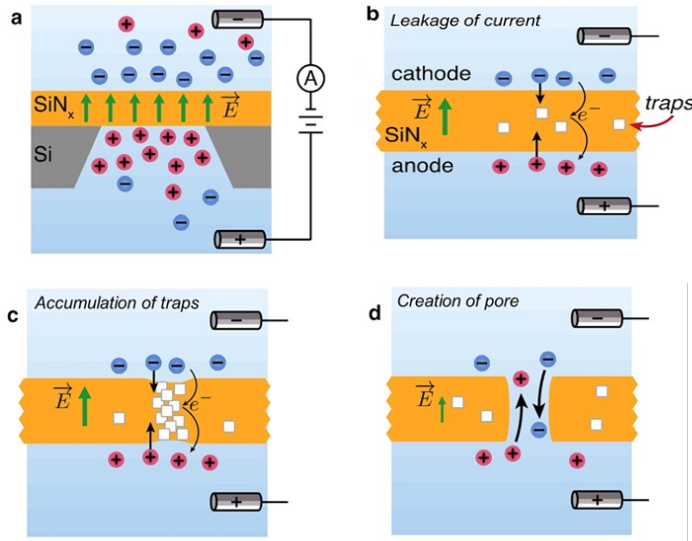
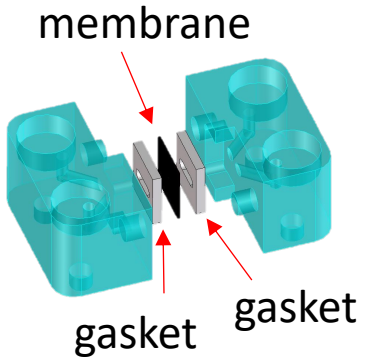
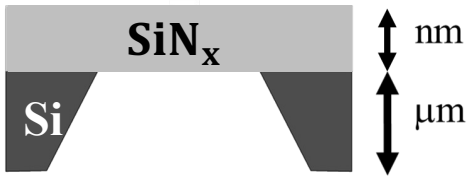
- miniaturized
- portable



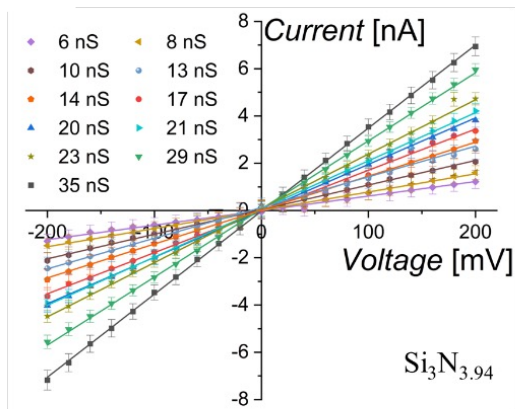
Thin Nanopore Membranes



Silicon Nitride Nanopore Fabrication

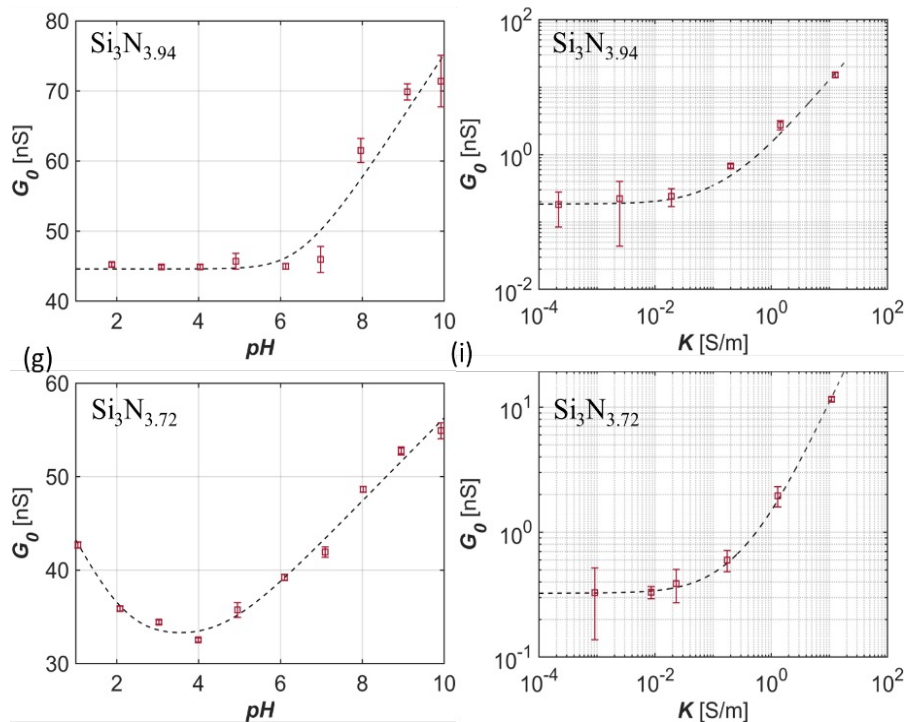


Sensor Surface



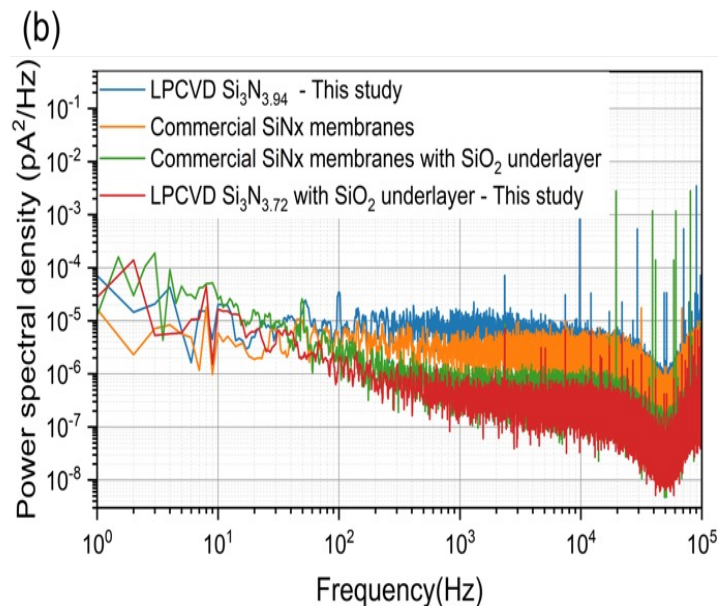
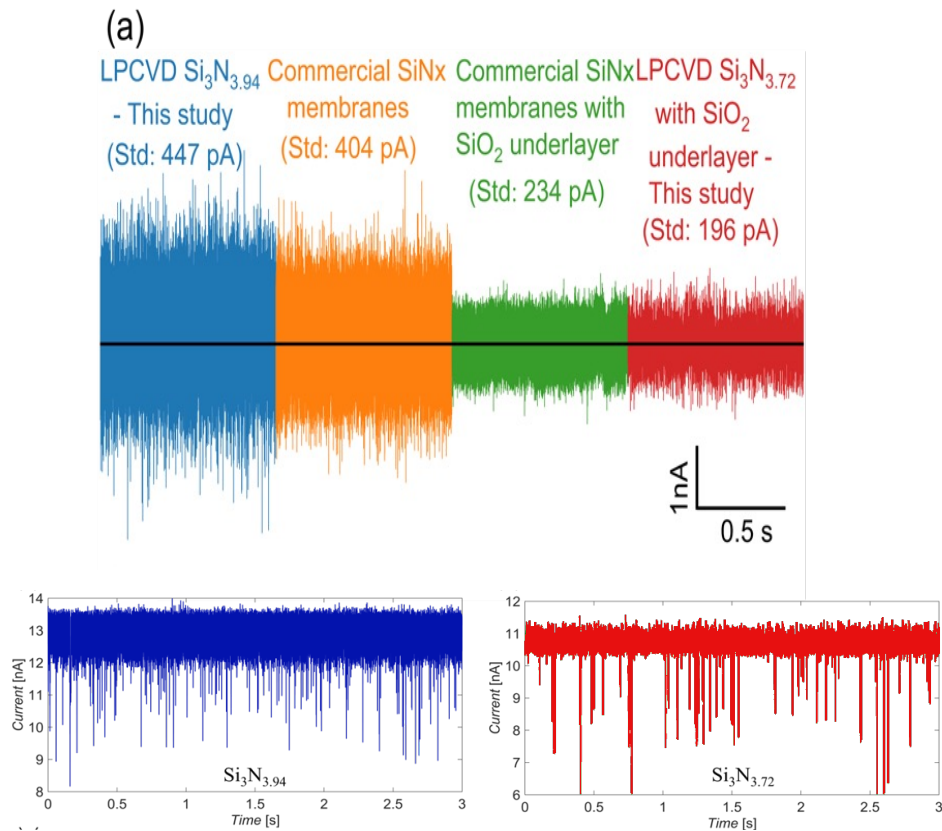
$$G = \frac{I}{V} = \left(\frac{1}{G_{\text{bulk}} + G_{\text{surface}} + G_{\text{access}}} \right)^{-1}$$

$$G = K \left(\frac{1}{\frac{\pi r_0^2}{L} + \frac{\mu|\sigma|}{K} \cdot \frac{2\pi r_0}{L}} + \frac{2}{\alpha \cdot 2r_0 + \beta \cdot \frac{\mu|\sigma|}{K}} \right)^{-1}$$

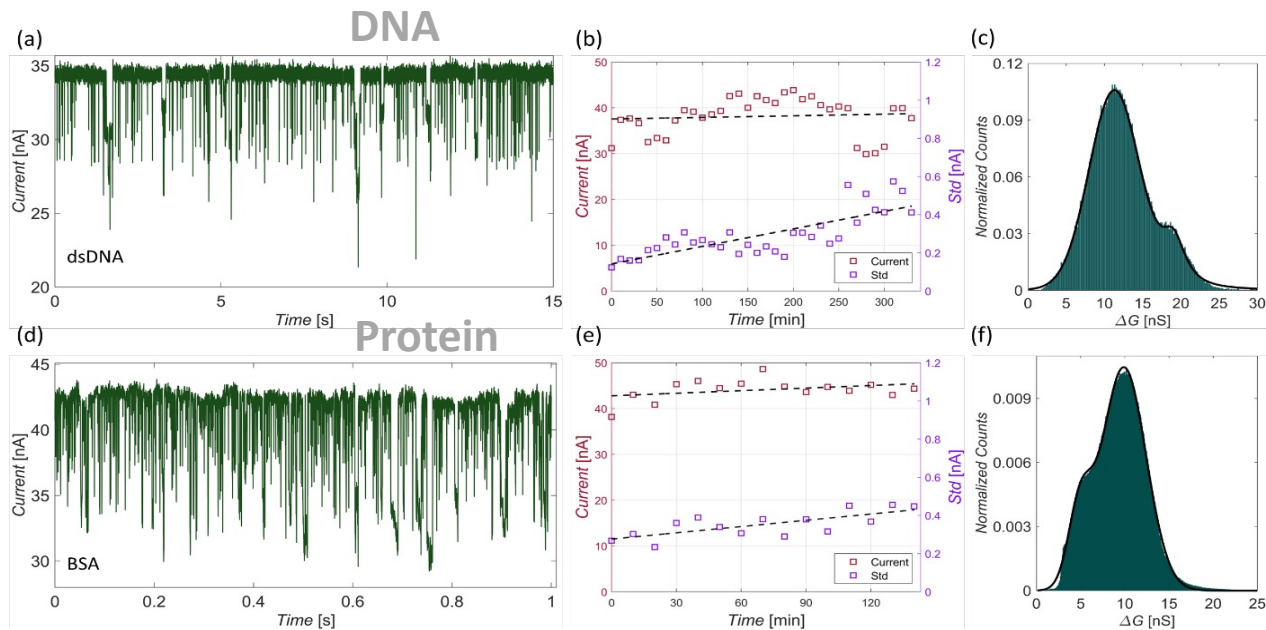


$$|\sigma| \cong \frac{c_{\text{eff}}}{\beta e} W \left(\frac{\beta e}{c_{\text{eff}}} \exp((pH - pK_a) \ln(10) + \ln(e\Gamma)) \right)$$

Noise Levels of Nanopore Sensors



Over Million Events



1 MILLION DOLLARS



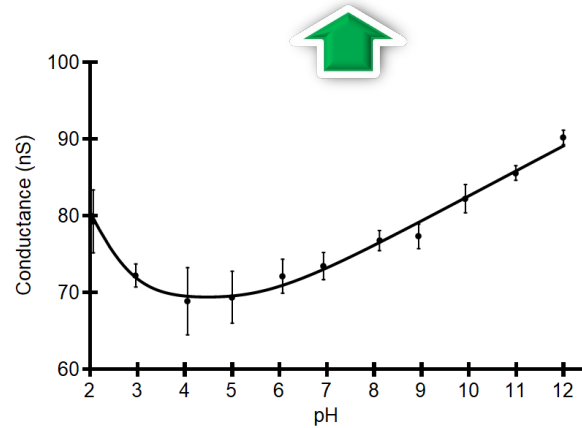
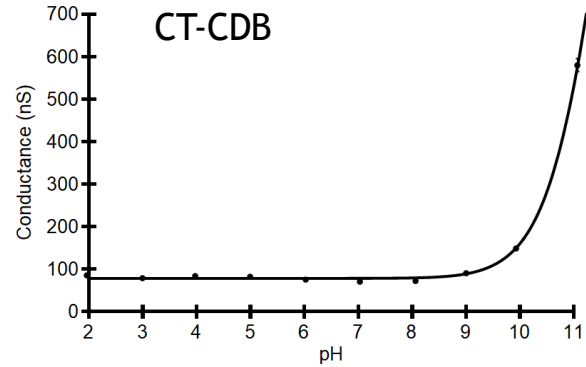
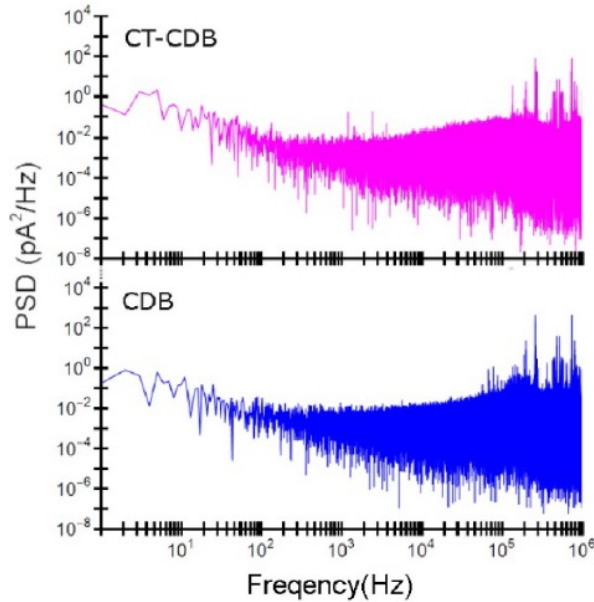
I MEANT EVENTS, EVENTS

imgflip.com



CT-CDB and beyond

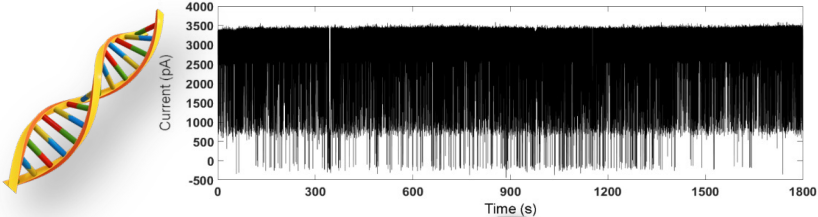
2:9 bleach:1 M KCl (with
~10 mM HEPES at pH ~7)



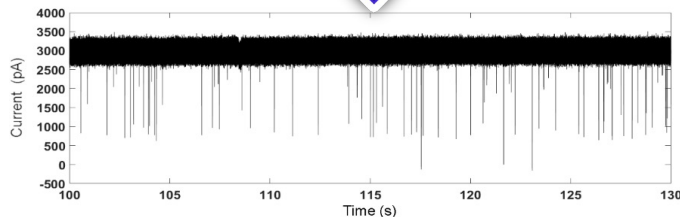
nanopore surface
chemistry seems
to be drastically
different



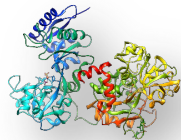
CT-CDB and beyond



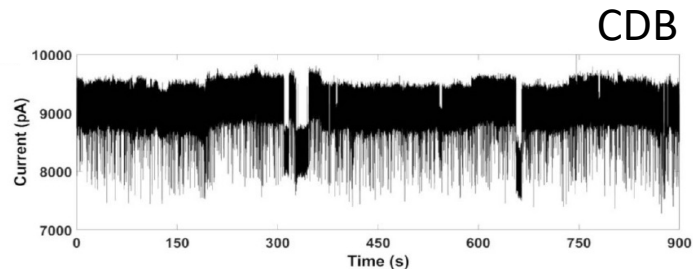
DNA



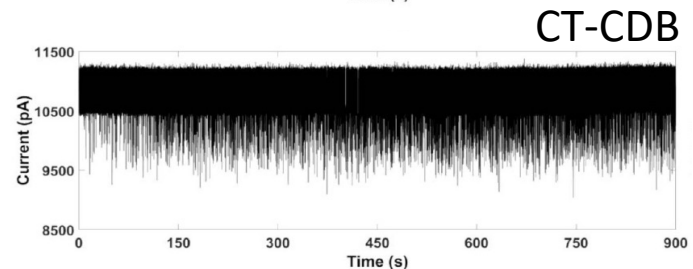
zoomed in



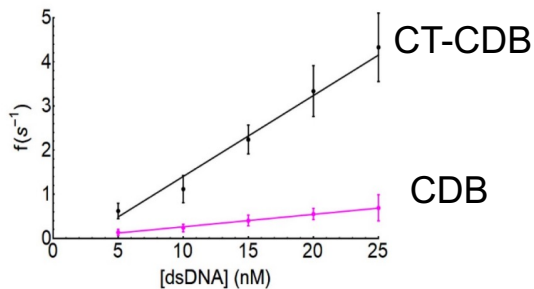
hSTf
Protein



CDB



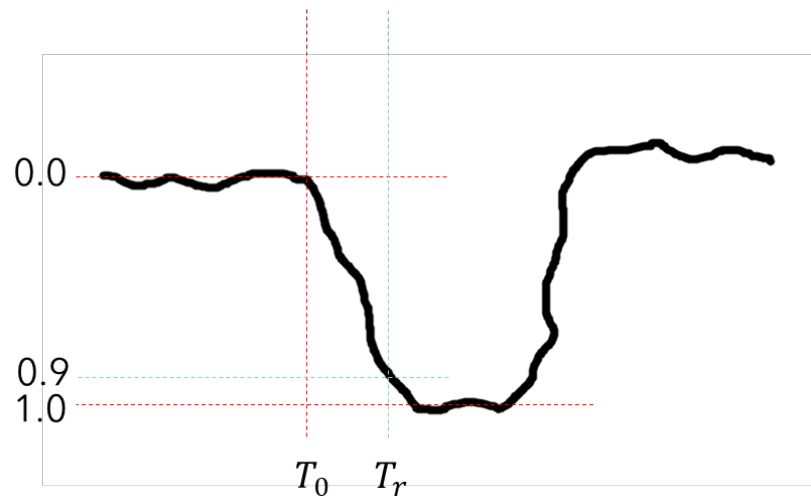
CT-CDB



- Stable baseline over a long time
- Higher frequency in DNA events
- Minimum pore clogging
- Self-correcting ability



High Bandwidth Studies



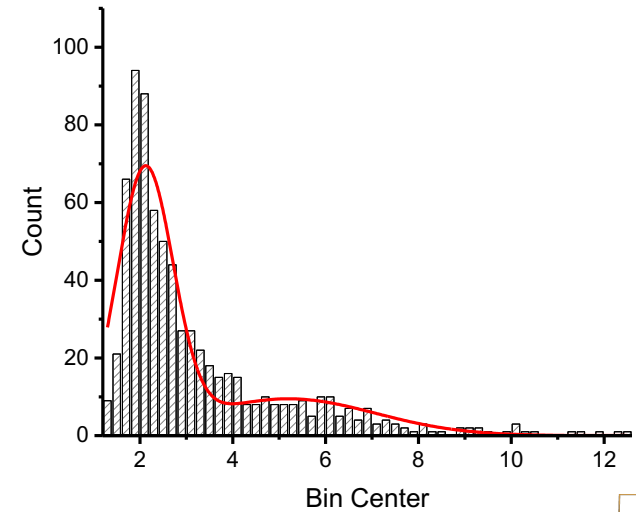
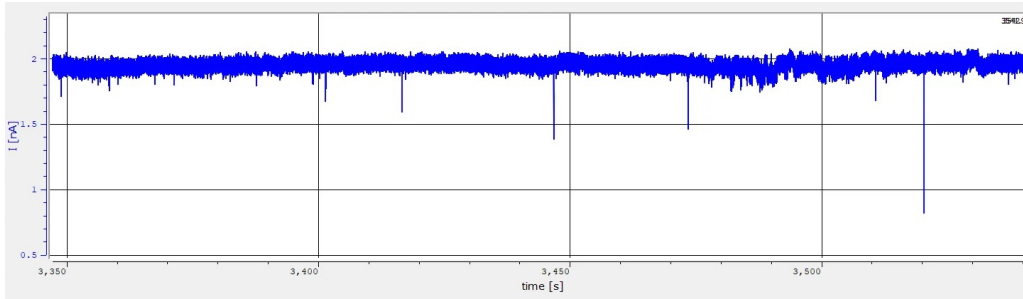
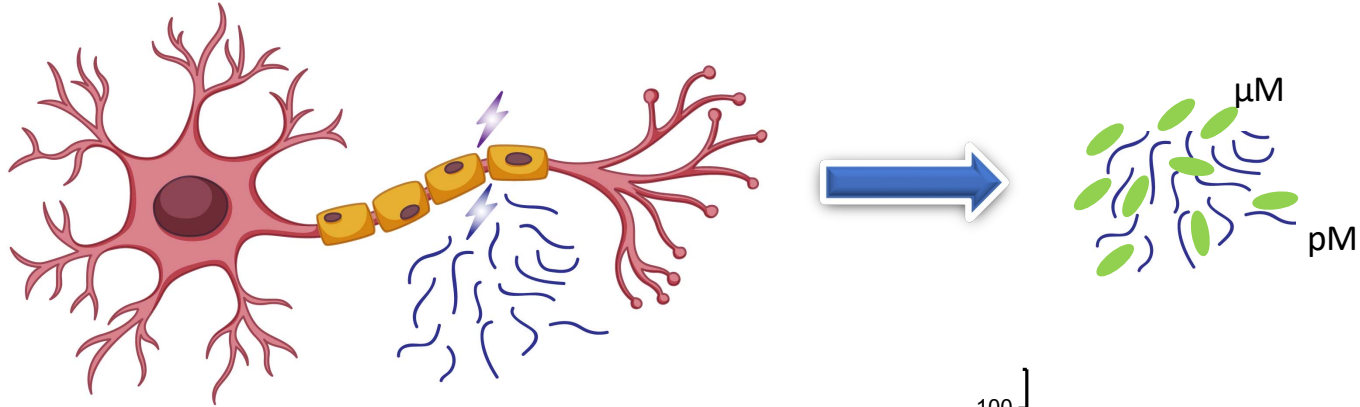
Attenuated events

$$T_r = 0.35/BW$$

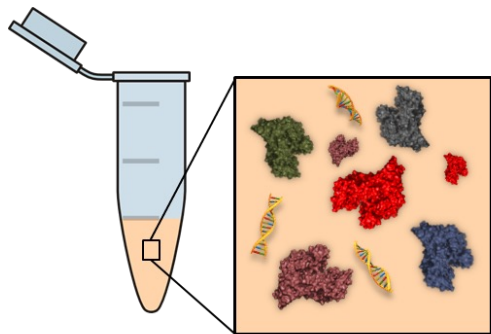
$$\text{event duration} < 2T_r$$



Neurofilament Sensing: Semi-complex Samples



Machine Learning for Complex Samples



Develop

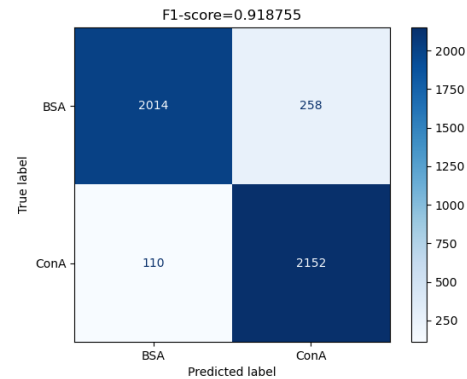
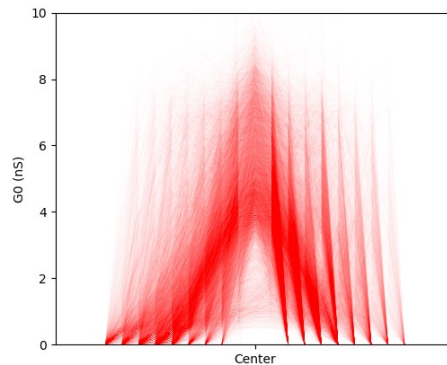
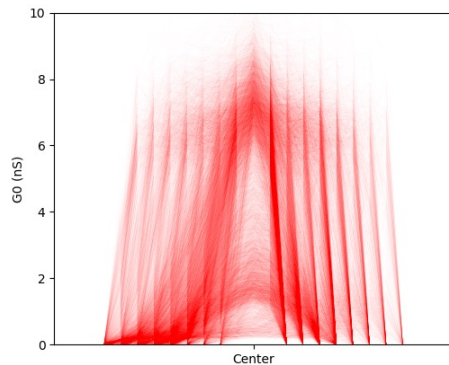
- Develop algorithms to differentiate between different protein signals.

Train

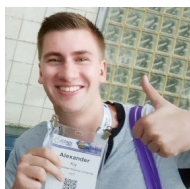
- Train the algorithms with each protein and then with a mixture of different proteins.

Identify

- Identify the presence and concentration of NFL in blood.



Acknowledgements



- Tianshi
- Hancheng
- Nahid



Australian
National
University



Australian Government
National Health and
Medical Research Council



Australian Government
Australian Research Council

M MICROSCOPY
AUSTRALIA



Thank you

Dr. Buddini I. Karawdeniya

Research School of Physics

Australian National University

ANU Grand Challenge 'Our Health in Our Hands' (OHIOH)

ARC Centre of Excellence for Transformative Meta-Optical Systems (TMOS)

Email: buddini.karawdeniya@anu.edu.au

