



Welcome to Huizhou in 2025



**Institute of Modern Physics (IMP),
Chinese Academy of Sciences (CAS), China**



Outline



- **IMP brief introduction and accelerators at IMP**
- **Huizhou brief introduction**
- **Organization and preparation for HB2025**

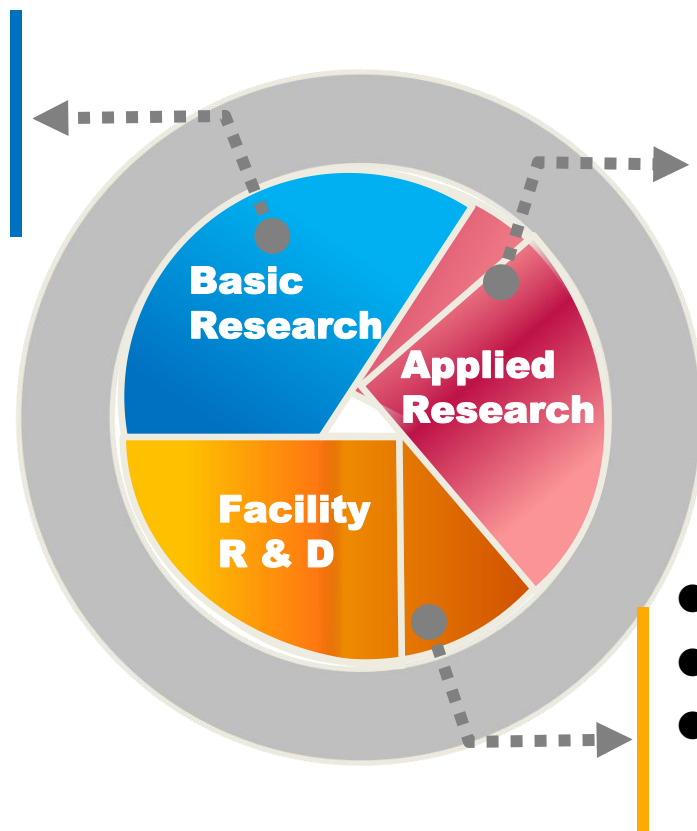


IMP Brief Introduction



IMP is the biggest nuclear physics research center in China for heavy ion basic-science and nuclear technology application

- Nuclear physics
- Atomic physics
- Nuclear chemistry
- Radiation chemistry
- Material science
- Hadron physics
- High Energy Density physics
- Accelerator physics



- Radiation biology
- Radiation medical science
- Radiation material
- Advanced nuclear energy
- Nuclear-detector technology

- Ion Accelerator facilities
- Large-scale experiment facilities
- Special experiment facilities

High Priorities at IMP

- Precision mass measurement of exotic and stable nuclides, RIB physics, SHE
- CIADS and HIAF project, ADANES
- Tumor therapy
- Irradiation Material sciences

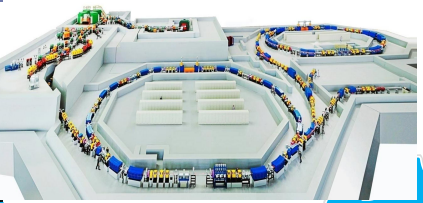
- 900 staff+550 students
- 1.5 B CNY/per year since 2018



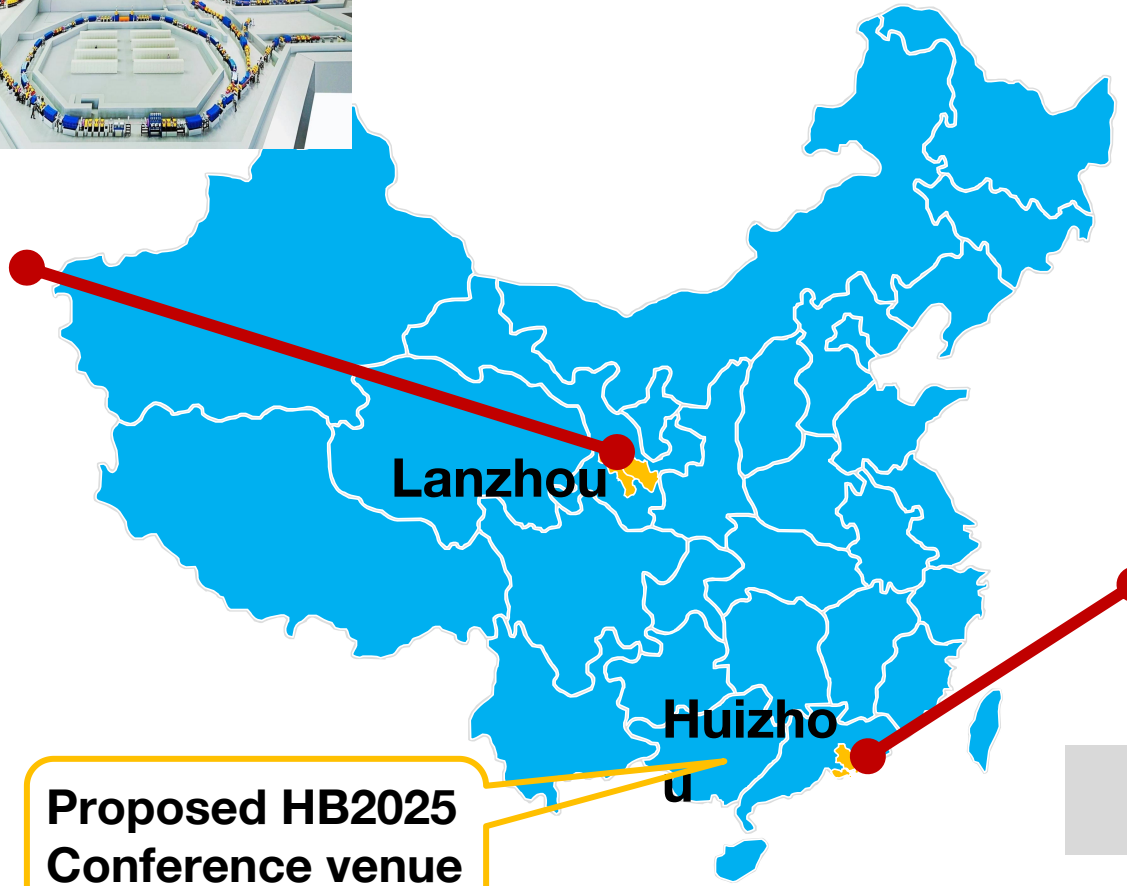
2 campuses, Lanzhou and Huizhou (new)



HIRFL @Lanzhou
Gansu Province



Main campus,
50,000 m²



Proposed HB2025
Conference venue

CiADS & HIAF
project site



Huizhou
Guangdong Province

New campus 85,000 m²
Project site 594,000 m²



IMP Existing Facility: HIRFL



Heavy Ion Research Facility in Lanzhou (HIRFL)



SSC (K=450)
100 AMeV (H.I.), 110 MeV (p)



SFC (K=69)
10 AMeV (H.I.), 17~35 MeV (p)





HIRFL : Experimental setups



On-line Experiment for γ ray



Material Irradiation



Micro-beam



External Target Experiment @ CSRm



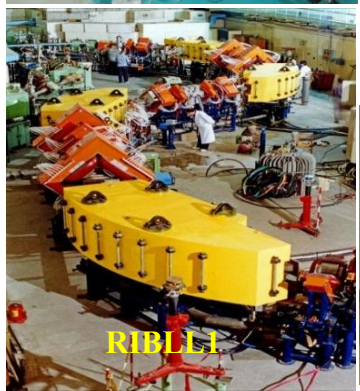
Experiment for DR research



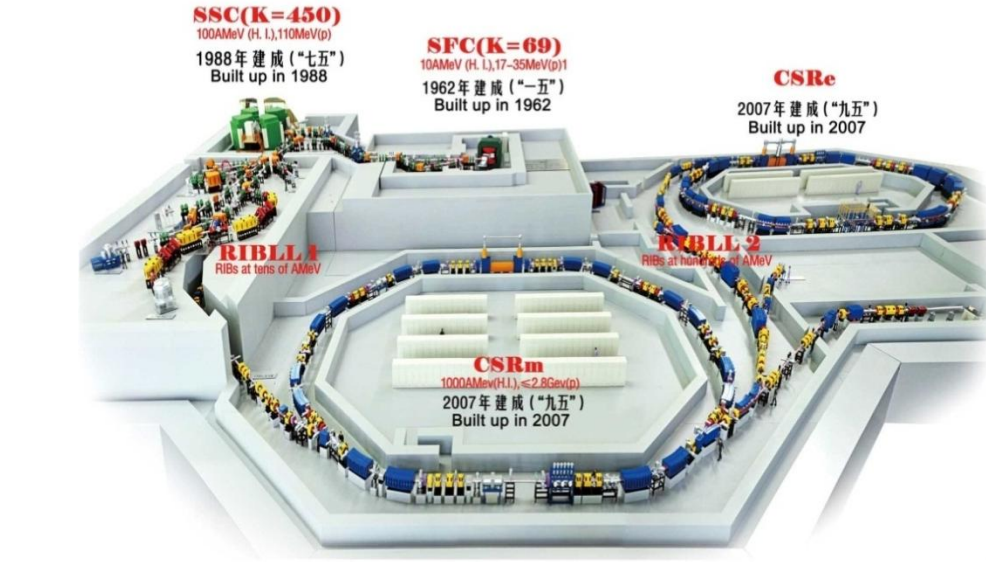
Gas Filled Recoil Separator



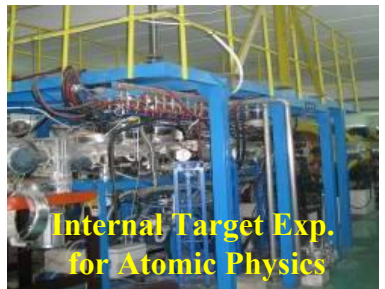
Space Science



RIBLL1



Exp. for Nuclear mass measurement



Internal Target Exp. for Atomic Physics



Cancer Therapy & Breeding



Nuclear membrane



Cancer Therapy & Biology Irradiation



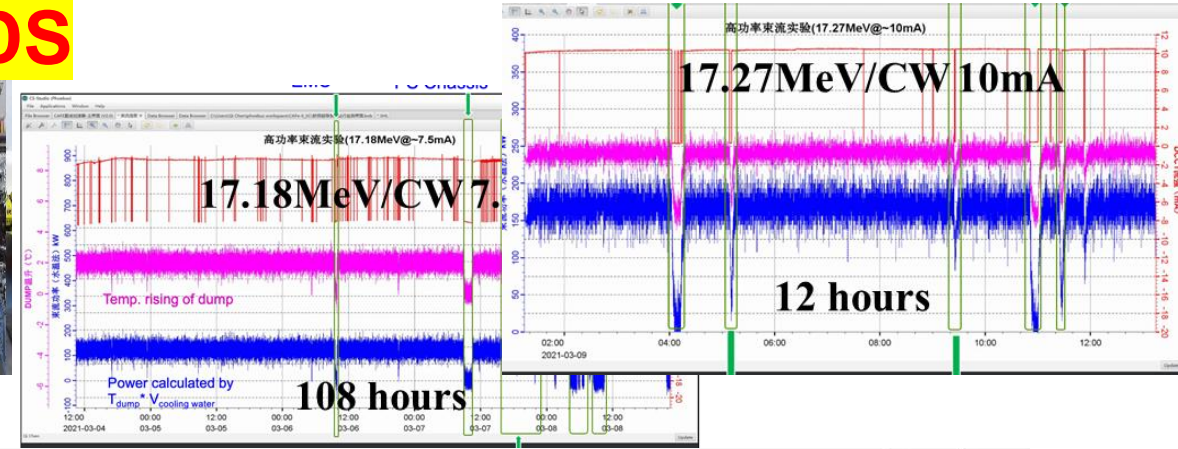
PISA



High intensity SC ion linac

CAFe

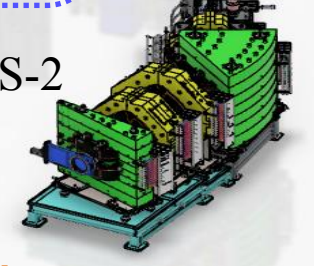
CAFe, the demo frontend of CiADS



CAFe² for SHE research



SHANS-2



- ◆ Ion species: $M/Q \leq 3$
- ◆ Beam Energy: 4-8 MeV/u
- ◆ User facility for:
 - Super Heavy Element synthesis



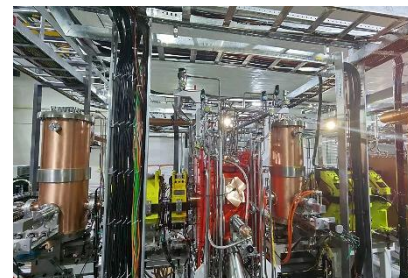
Low Energy high-intensity heavy ion Accelerator Facility: **LEAF**



LEBT



RFQ

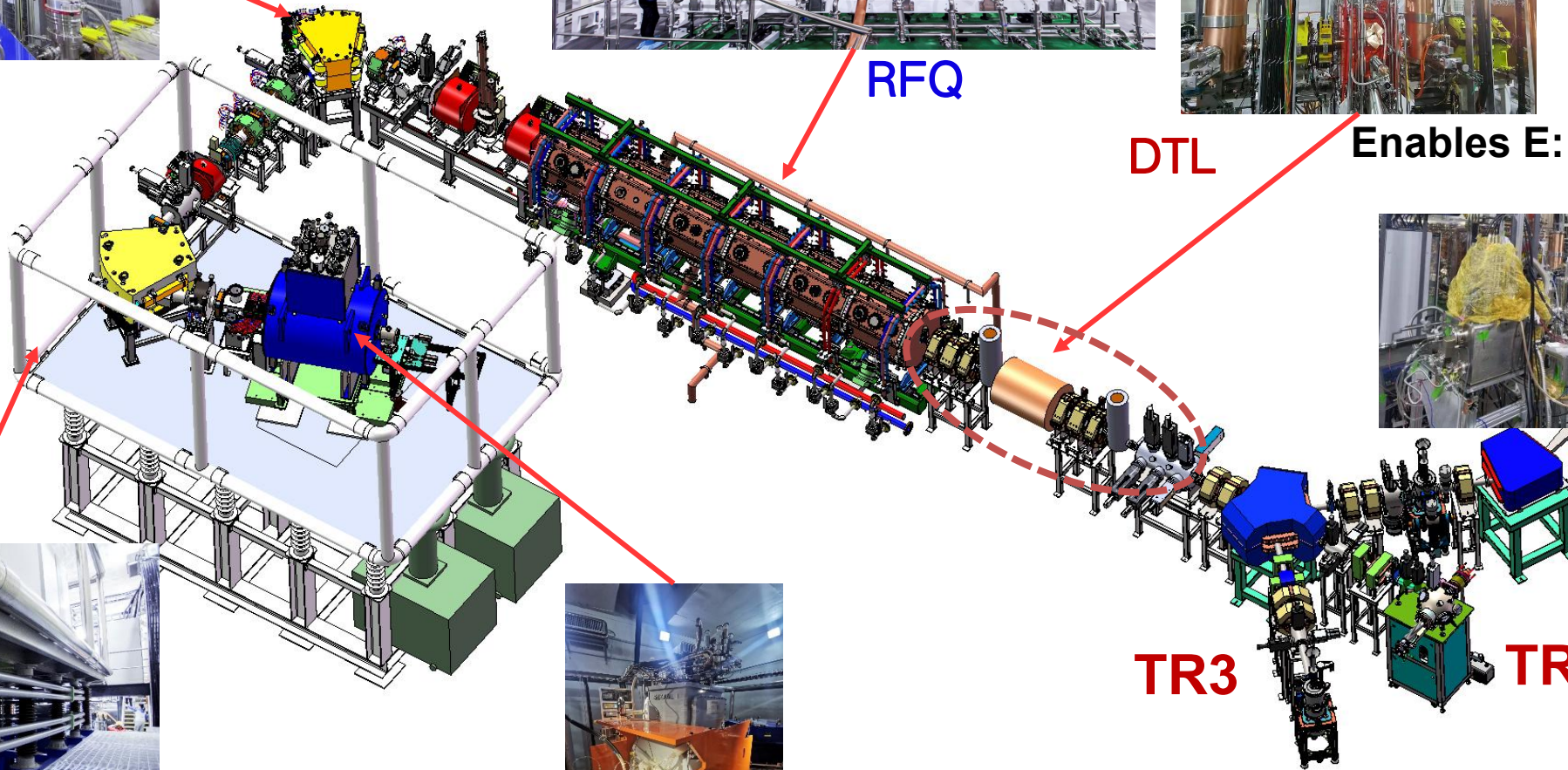


DTL

Enables E: 0.3~0.7 MeV/u



terminals



High voltage platform



TR2

TR3

LEAF, the frontend demo of HIAF linac injector



HIAF & CiADS brief introduction

Huizhou

- **HIAF:** High Intensity heavy ion Accelerator Facility
- **CiADS:** China Initiative Accelerator Driven System
- Being built by IMP in Huizhou of Guangdong Prov.
- Two large-scale scientific infrastructure facilities approved by China Government hosted by IMP

- **HIAF:** Nuclear physics research
- **Total budget:** 2.8 B CNY ¥ (424 M USD \$)
- **Schedule:** 2018-2025
- Construction started officially Dec. 2018

- **CiADS:** Nuclear waste transmutation
- **Total budget:** 4.0 B CNY ¥ (606 M USD \$)
- **Schedule:** 2021-2027
- Construction started officially July. 2021





Civil construction sites of HIAF and CiADS in Huizhou



Topview of HIAF&CiADS facility construction site



- Affiliation: Chinese Academy of Sciences (CAS)
- **Location: Downtown of Huizhou city**
- New campus in operation

Where is Huizhou and how to come



- Huizhou (惠州) is a city in central-east Guangdong Province, China.
- 120 km to Hong Kong airport. 150 km to Guangzhou airport. 110 km to Shenzhen airport.

150 km from
Guangzhou

120 km from
Shenzhen/Dongguan

110 km from
Hongkong

100 km to
CiADS & HIAF

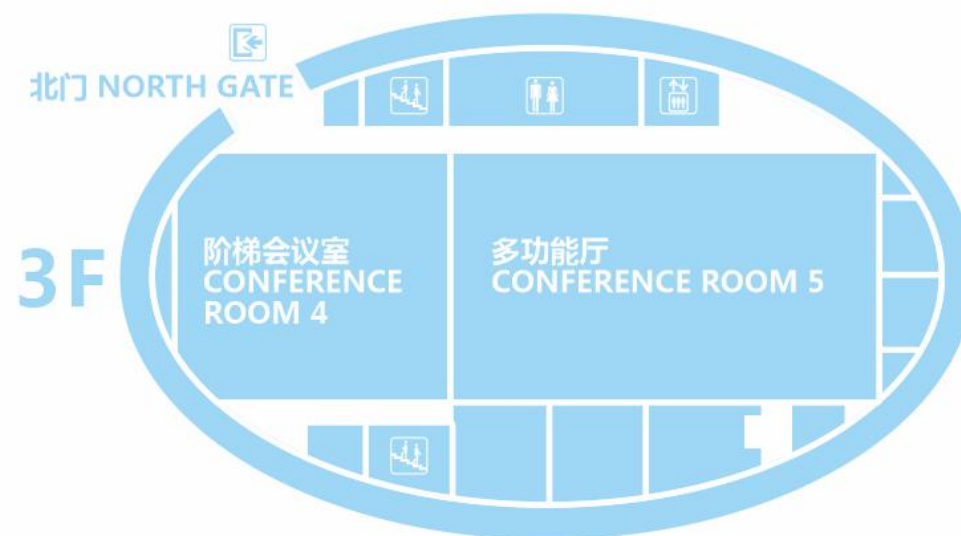
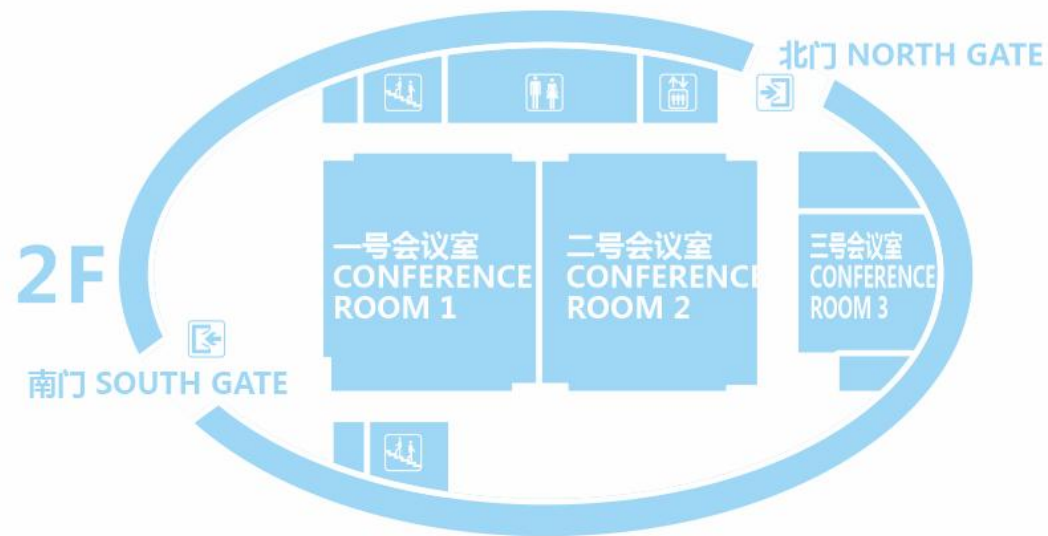




Conference Center@ IMP campus Option 1

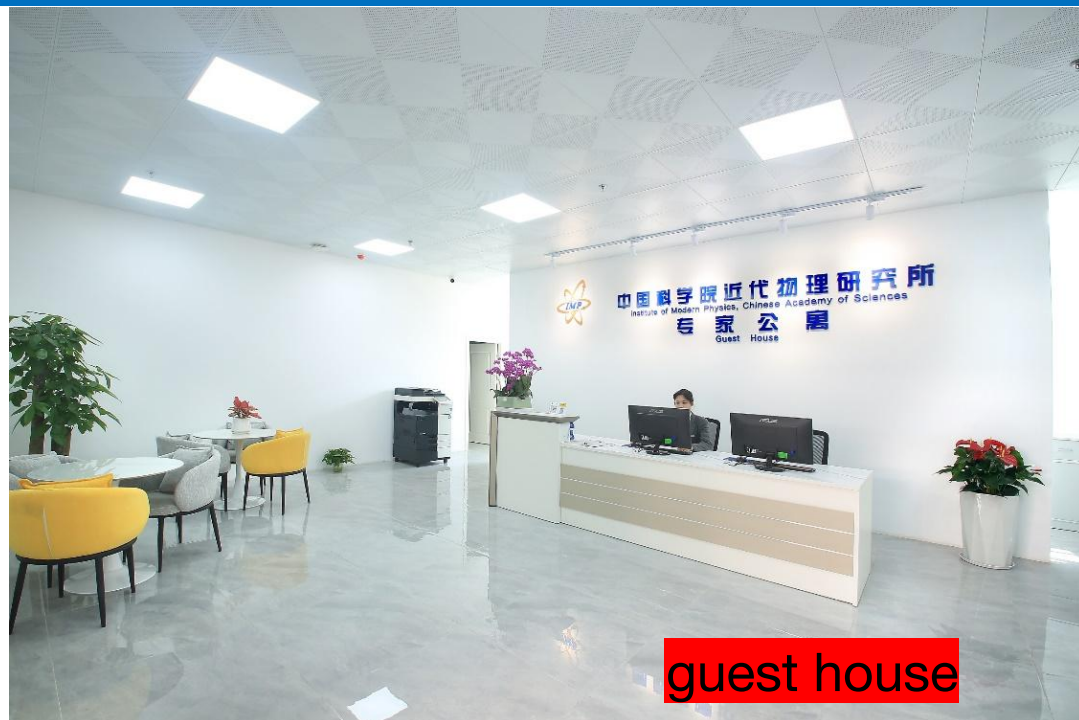


Meeting room	Area(m ²)	Seats
Conference Room 1	288	200
Conference Room 2	288	200
Conference Room 3	108	90
Staircase Meeting Room	340	240

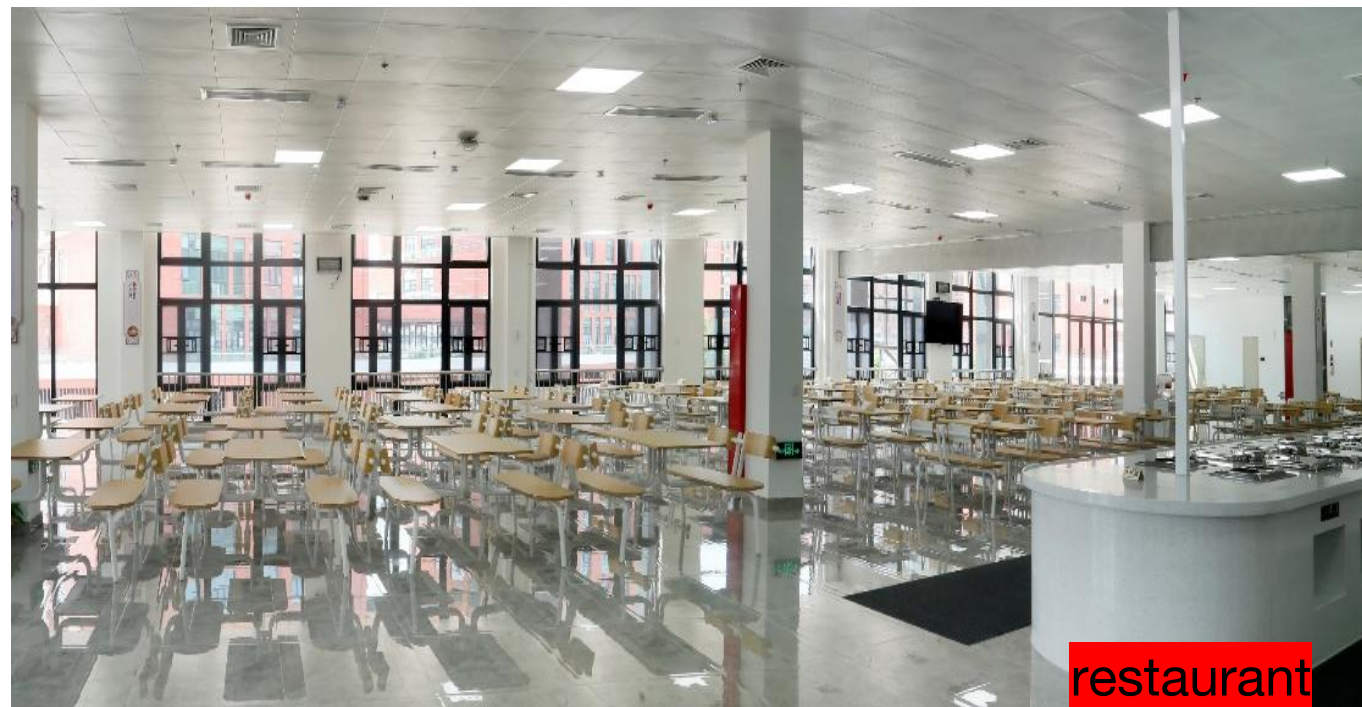




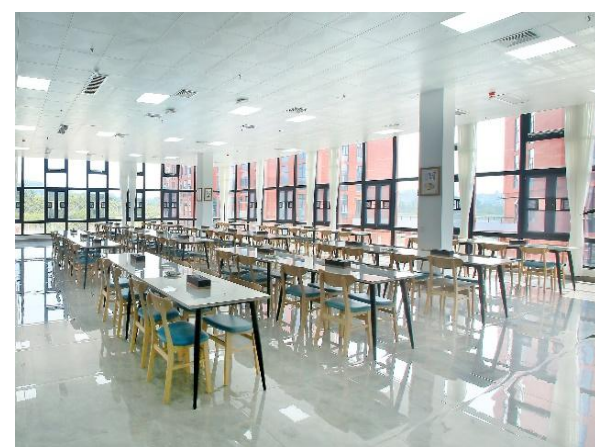
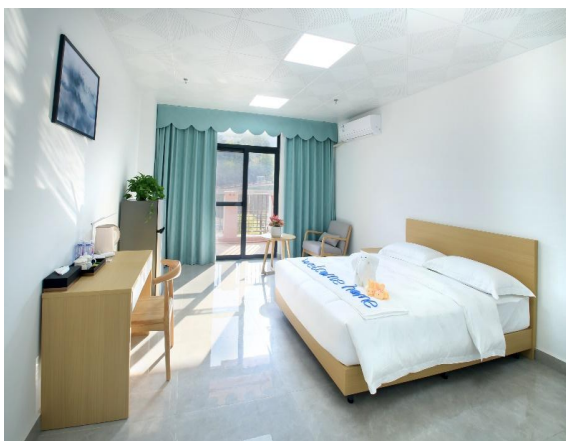
Conference Center@ IMP campus **Option 1**



guest house



restaurant



Conference Hotel — Option 2



- **Huizhou Kande Intl' Hotel** located in downtown
- **Gorgeous view @ main river bank**
- **15 ~ 20 min drive from IMP campus**
- **Room rate: 700-850 CNY/night**





Plenty of hotels in Huizhou center city. Ranging from resorts (~120 USD per night) to economy hostels (~30 USD per night)

Crowne Plaza Huizhou



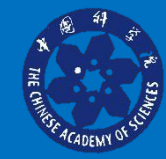
Huizhou Xilin West Lake Boutique Hotel



The screenshot displays a travel booking interface. On the left, there are three hotel listings:

- Crowne Plaza Huizhou, an IHG Hotel**: 9.0 Wonderful (21 reviews), Standard Room, Up to 2 beds, 2 nights, 2 adults, CNY 1,030 (+CNY 171 taxes and charges), Free cancellation.
- Atour Hotel Huizhou Zhongkai Tianyi**: Superior Double Room, 1 bed, 2 nights, 2 adults, CNY 739 (includes taxes and fees), Free cancellation.
- Renaissance Huizhou Hotel**: 8.0 Very Good (47 reviews).

On the right, a map of Huizhou is shown with several blue location pins indicating hotel positions. The map includes labels for districts like Bozhou (博罗县) and Huicheng (惠城区), and various streets and landmarks.



Conference Dates and Registration Fee



◆ Conference dates

October, 12-17, 2025. Very nice weather in October, 25°C~27°C

◆ Registration fee

- The registration fee could be 4000 CNY (about \$550)
- For students, the registration fee could be RMB2000 Yuan (about \$275)
- **Lunches will be included**

◆ **Conference Chair: Hongwei Zhao (zhaohw@impcas.ac.cn)**

Conference Co-Chair: Yuan He & Jiancheng Yang



- Social activities include welcome **reception, banquet** with the view of the Dongjiang River and Huizhou West-lake.

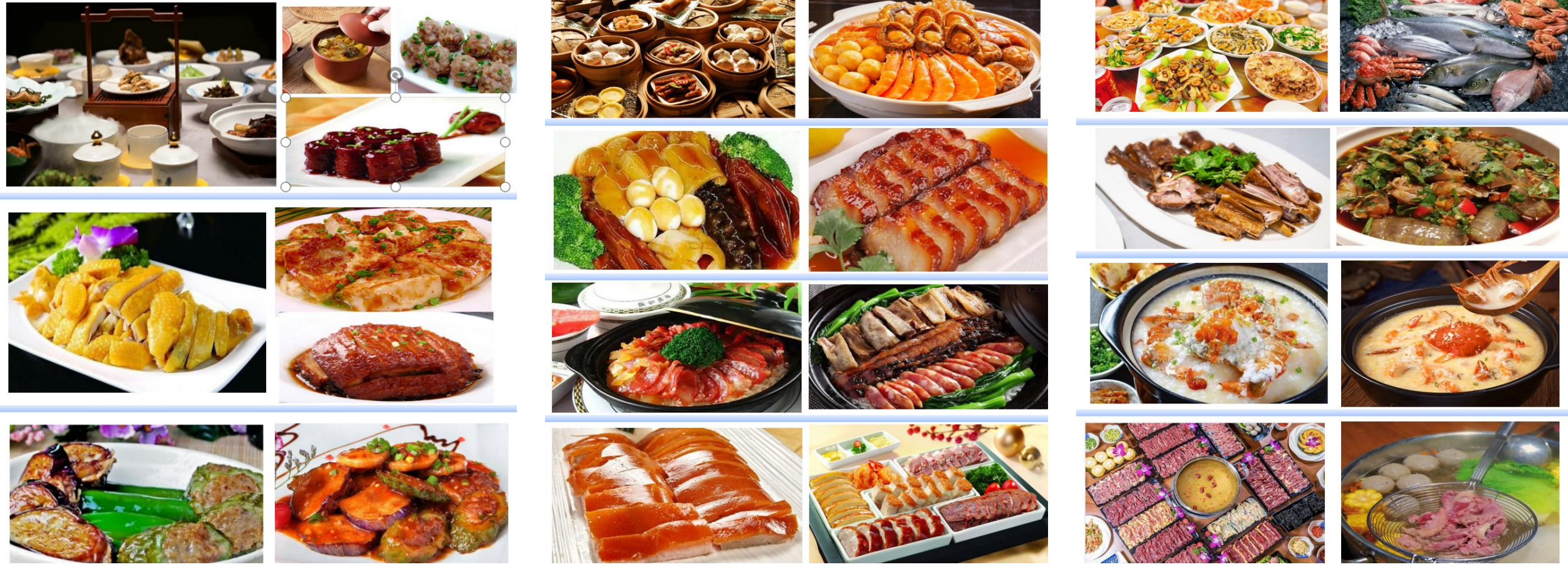


- Excursions:
 - Visit HIAF/CiADS facilities
 - Local sightseeing (to be determined)
 - Companions are also welcome to explore Huizhou. Nice place for vocation.

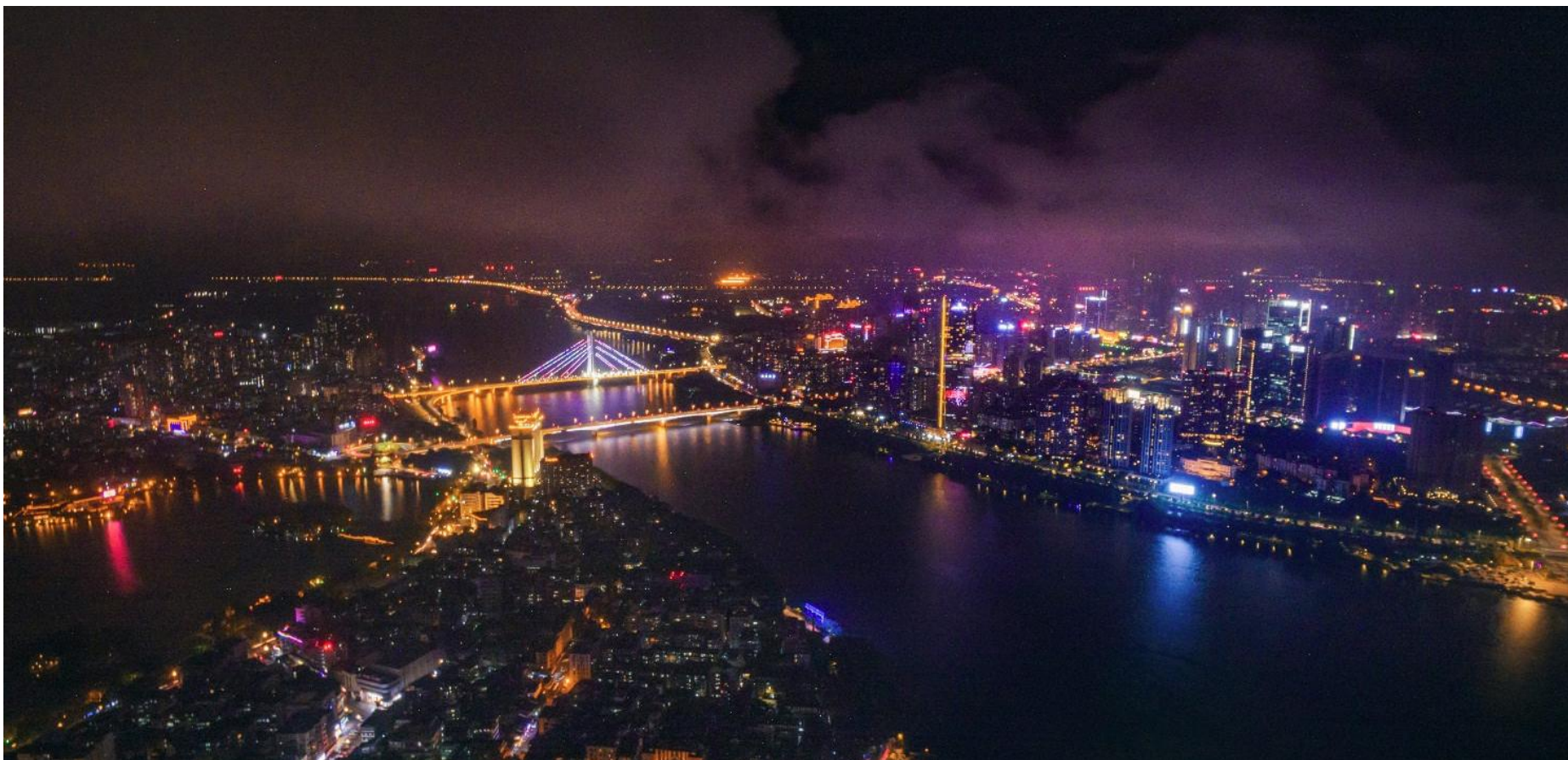


A nice place also for vocation





A lot of restaurants around the conference hotel and in downtown



Looking forward to see you in 2025!