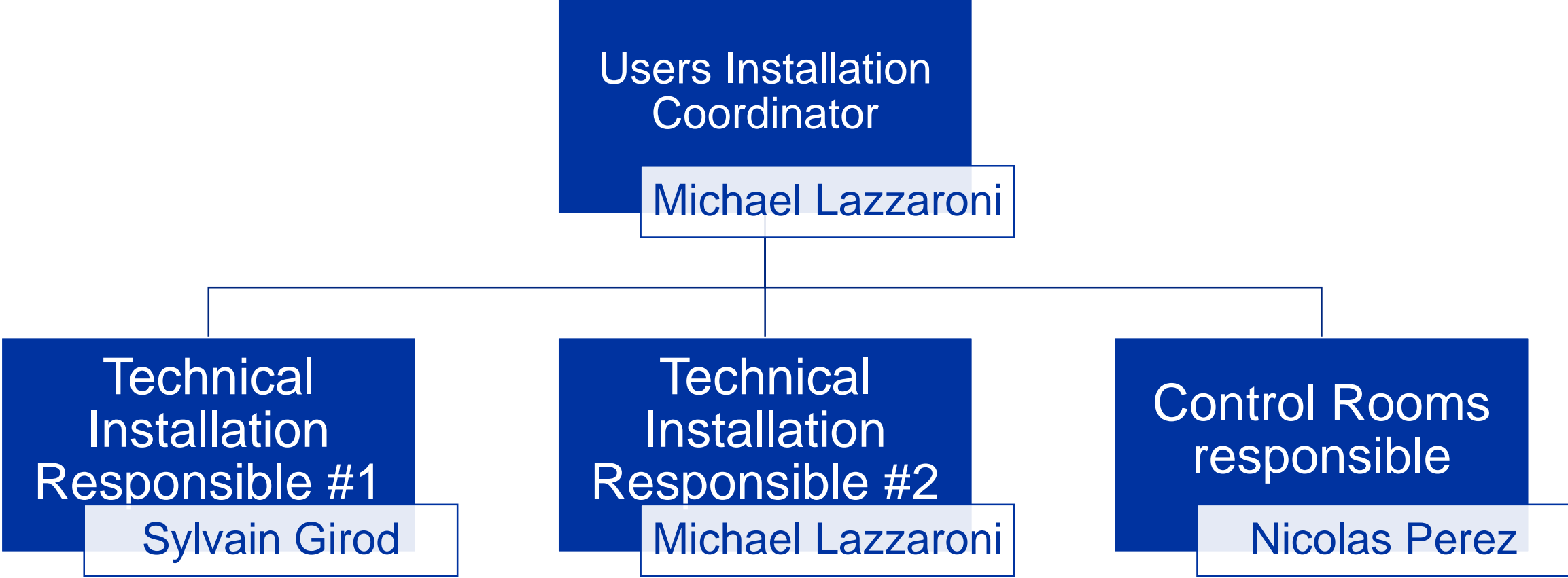


NA-Operation 2022

Users Meeting – Installation

Michael Lazzaroni BE-EA-DC

Installation Organization in North Area



Installation Process



Preparation before your arrival



Your arrival in EHN1 - Installation



End of your beam time period

Technical meeting 3-4 weeks prior the experiment installation:

- Technical discussion of your set-up;
- Presentation of our infrastructure;
- Answer your questions;

and give you the maximum support to **help you and us to have an efficient installation in our facilities**☺

(details in the next slide)

Installation the “D” day :

- Ensure that your **equipment are ready to be moved in the PPE** by the Transport team **early** in the morning.
- All **late requests** will be treated at the **end of the day** (to not disturb the installation planning).

De installation at the end of your beam time period:

- **Removal of all equipment** in the EA and CR the Wednesday **ASAP**.
- **Checkout** of the EA and CR with us to be sure that **all your equipment have been removed**.

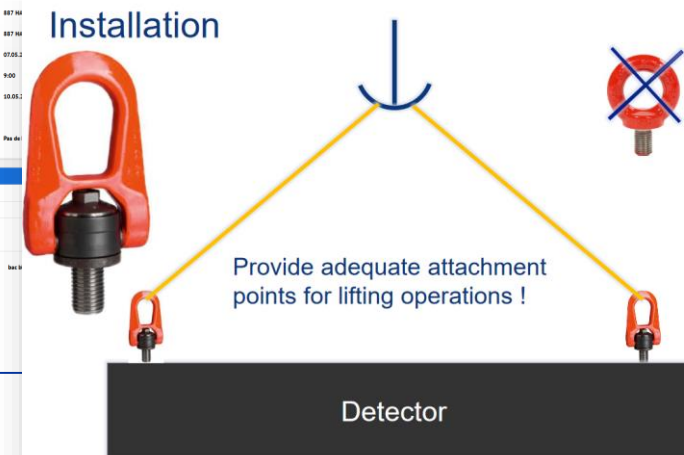
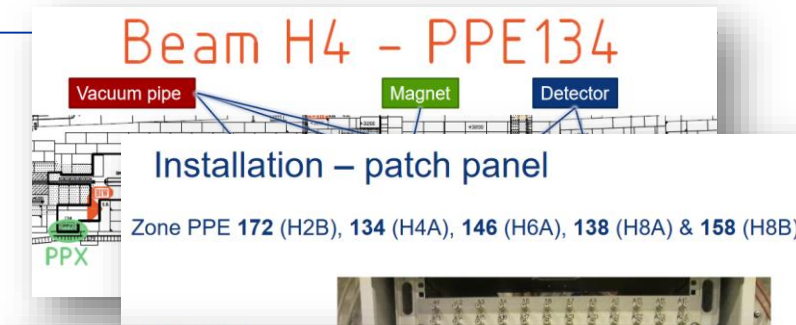
Technical meeting (3-4 weeks prior your installation)

- **Technical points to discuss concerning your installation:**

- Preparation of the zone according your requirements, in term of:
 - Beam line configuration (your detectors, vacuum pipes ...)
 - Cabling, patch panel needs
 - Mechanical support for your set-up (DESY tables, concrete blocks...)
 - General Services: electrical power needs...
 - Gas (Reminder : make your gas request ASAP to David Jaillet)

- Preparation of your arrival:

- Quantity of material (storage place)
- How to prepare “transport request” via EDH to unload your material
- CERN requirements to handle your material safely



Services in BE-EA – Useful technical contacts

- BE-EA provides technical services to users, in term of:

Cabling Connectors, cables, cabling...

- be-dep-ea-as-cabling@cern.ch

Workshop Machining, installation...

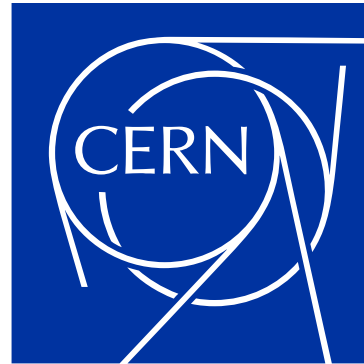
- Celim.Benmehdi@cern.ch

Gas Supply of CO₂, He, N₂....

- David.Jaillet@cern.ch

Moveable tables Desy tables, Saphir, XSCA...

- Bruno.Ilmari.Virtanen@cern.ch
- Michael.Lazzaroni@cern.ch



Thanks for your attention!
Questions?

<https://cern.ch/be-dep-ea>