



# General Safety for EHN1 users

# General Safety in EHN1

- Necessary PPEs (Personal Protective Equipment) to enter the experimental areas are: **helmet, safety shoes and personal dosimeter**



Additional PPEs might be required, depending on the activities to be performed.

- Every experimental area is equipped with safety installations, as **fire extinguishers** and **AUG** (General Emergency Stop – cut the power in the entire building).

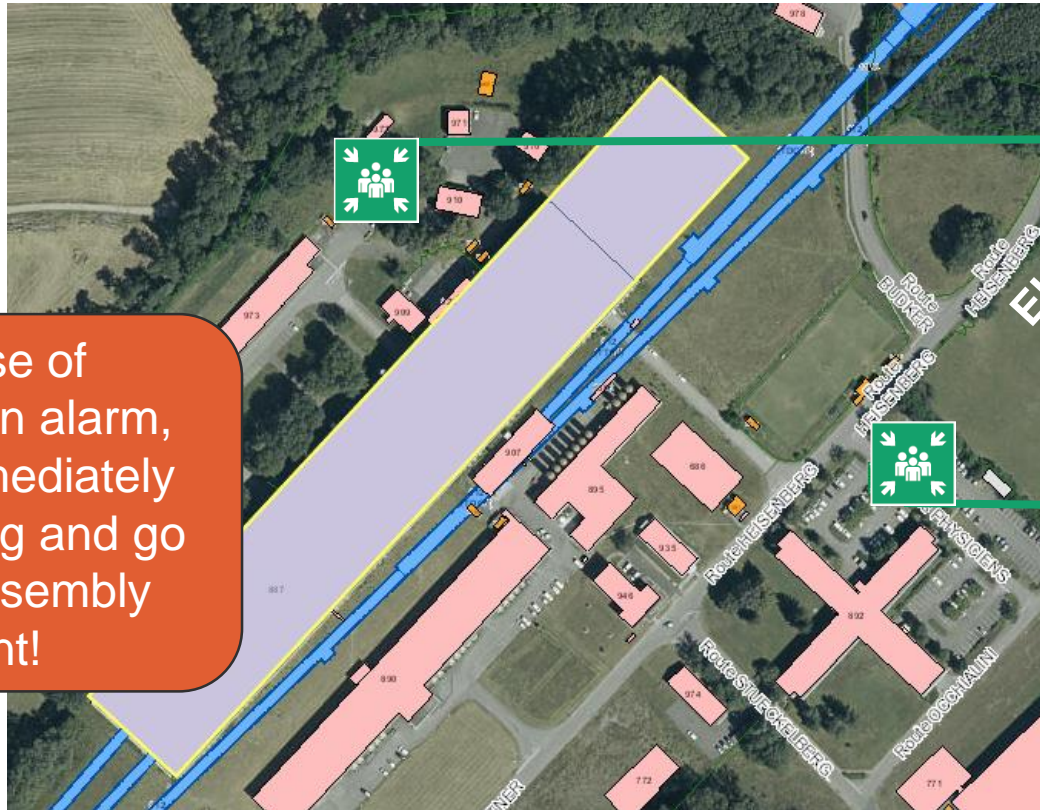
*Please, take some time to familiarise with their position the first time you enter the building!*

- Any **professional incident** shall be declared ASAP via the EDH form:

<https://edh.cern.ch/Document/General/IncidentDeclaration>

# Assembly points in EHN1

- There are two assembly points, located at the sides of EHN1.  
*Please, take some time familiarise with their location!*



In case of evacuation alarm, leave immediately the building and go to the assembly point!



**Jura side:** close to picnic area



**Salève side:** car park by the ramp, close to building 892

# ISIEC Form & Safety Clearance process



Before operations, every set-up must undergo this safety process!

1. Go on the website: <https://ep-th-safety.web.cern.ch/isiec-safety-clearance>
2. Submit the **ISIEC** (*Initial Safety Information for Experiments at CERN*) **form** with the details related to your experiment (description, hazards, etc.) – Please, submit it 1 week in advance!
3. Receive confirmation email
4. You will be contacted by the EP Safety Office to organise the **inspection on site** (once the installation of the set-up is completed!)
5. After the inspection, the **remarks** (if any) will be communicated to you
6. If no major remarks are present, you will receive the **Safety Clearance** form via email. If present, minor remarks will be listed in this form. Make sure they are all resolved before taking beam!

# COVID-19 Restrictions – Green Level

- For the **control rooms**:
  - The recommended maximum number of people is displayed on doors (not mandatory)
  - Interpersonal distance of **1.5m is to be respected**
  - Wearing **mask Type I is mandatory** inside the control room, if the space is **shared** (you can remove the mask when alone)
  - Hands and surface **disinfection** to be done as often as possible
  - Cleaning of the barracks is done regularly by cleaning personnel
- For the **experimental areas**:
  - The usage of mask Type I is recommended
  - Hands **disinfection** to be done as often as possible

Storage with COVID-19 related material: 887/R-C04 (access to be asked [here](#))

# Safety contacts



- In case of any safety related questions, different safety actors will be available:

TSO – Territorial Safety Officer

Contact: [EHN1-TSO@cern.ch](mailto:EHN1-TSO@cern.ch)

DSO – Department Safety Officer

Contact: [ep-safety-office@cern.ch](mailto:ep-safety-office@cern.ch)



Thank you!

Questions?

