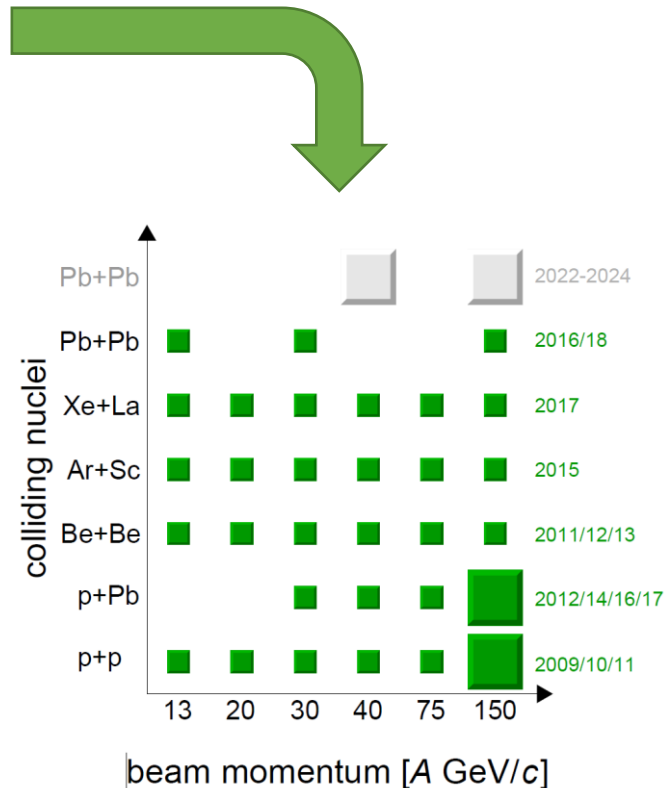
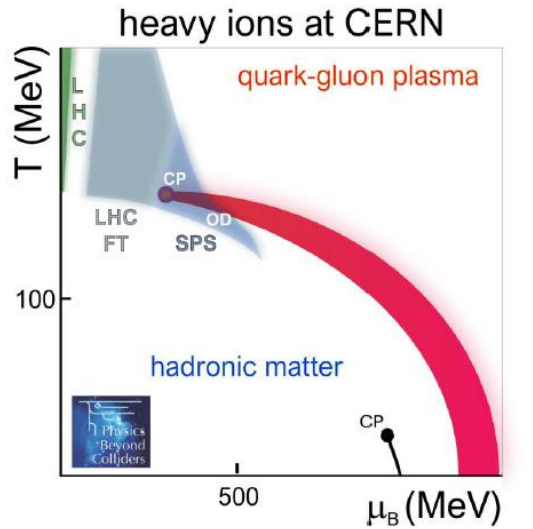


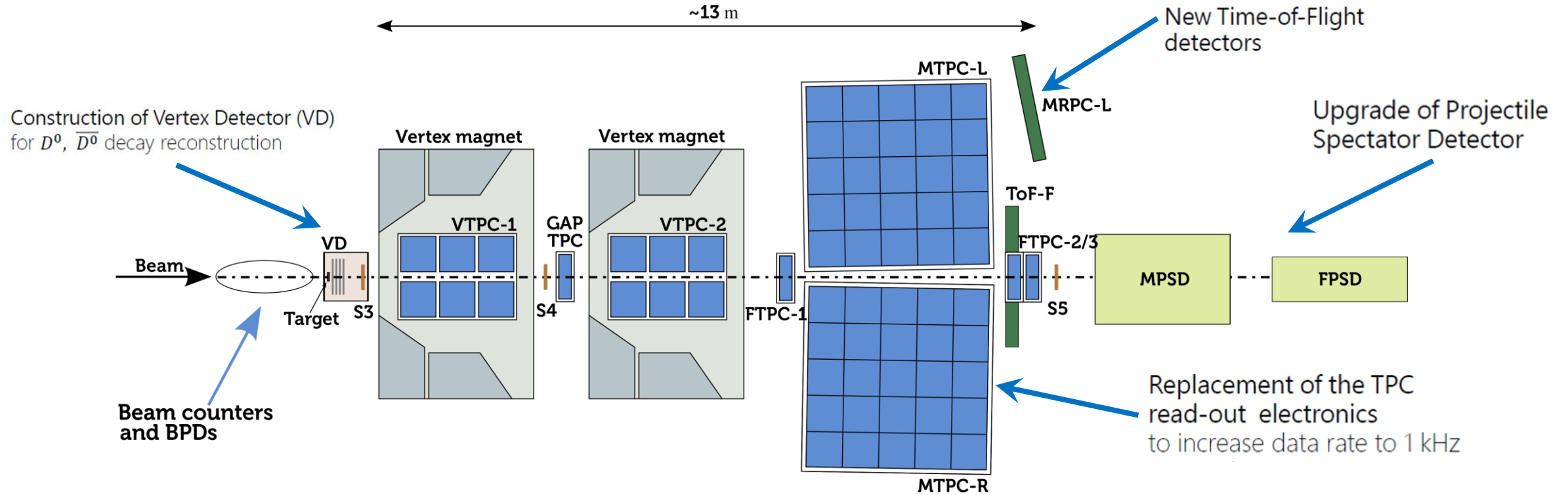
NA61/SHINE

# NA61/SHINE - Physics program



- Strong interactions program
  - search for the critical point of strongly interacting matter
  - study of the properties of the onset of deconfinement
  - study high  $p_T$  particles production (energy dependence of nuclear modification factor)
- Hadron-production measurements for neutrino experiments
- Hadron-production measurements for cosmic ray experiments

# Detector upgrade



# Beam requirements

- Test beam: hadron ( $h^+$ ) 150 GeV/c, intensity 100 kHz
- Neutrino runs: p 30,9 GeV/c, intensity 100 kHz
- Lead runs:
  - Open charm physics Pb 150 AGeV/c
  - Secondary (fragmented) light-ion beam 13 AGeV/c (nuclear fragmentation cross-section measurements)

# Infrastructure

- CEDAR – for neutrino runs
- Modification of the beam-line (BPD installation and removal of beam pipe from PSD)
- No special requirements