

Weekly Reports - GIF++ Users Meeting

Meeting : 17.03.2022 - 9h

Announcements from GIF++ Coordination

- DSO test in North Area - all the zones (PPExxx) was finished for by Tuesday. Except Neutrino Platform and GIF++ XTDV.
- We expect a short GIF++ dedicated DSO test at the end of March.
- Gas will be restarted around noon.

Muon beam 2022 :

- Version 0.3 of schedul now avaiilabe.
NO changes affecting GIF++ so far. (but still not final)
The first 2 periods in the schedule are - basically- fixed.
-

Weekly Reports :

Please update before or during the meeting !

ATLAS-RPC: (Luca, Giorgia, Sinem, Ahmet)

- The person power is busy with the cavern activities. The detailed plan for the tests at GIF++ will be discussed after the closure.

ATLAS-MM: (Francesco, Givi)

update dated 17/03/2022:

- Setup maintenance
 - routing of an additional (temporary) line for pure Ar inside the GIF++ bunker.
 - simplest option is to use the pure Ar line installed in the prep. area
 - approx. 40m of pipe (20m for supply line + 20m for return line) has been routed
- Weekly plan:
 - continuation of aging studies with Ar/CO₂/iCH₄ gas mixture

ATLAS-sTGC (Margaret):

- No current setup at GIF++, and will not return until the later 2022 testbeam periods. Plan to join in July and October beam times, sharing setup with MM maybe as before, exact details (Frame? DAQ? Trigger?) TBD, but will most probably want to be nearby if not in same frame
- At that time will use same npentane mixture as before

CMS-CSC: (Katerina)

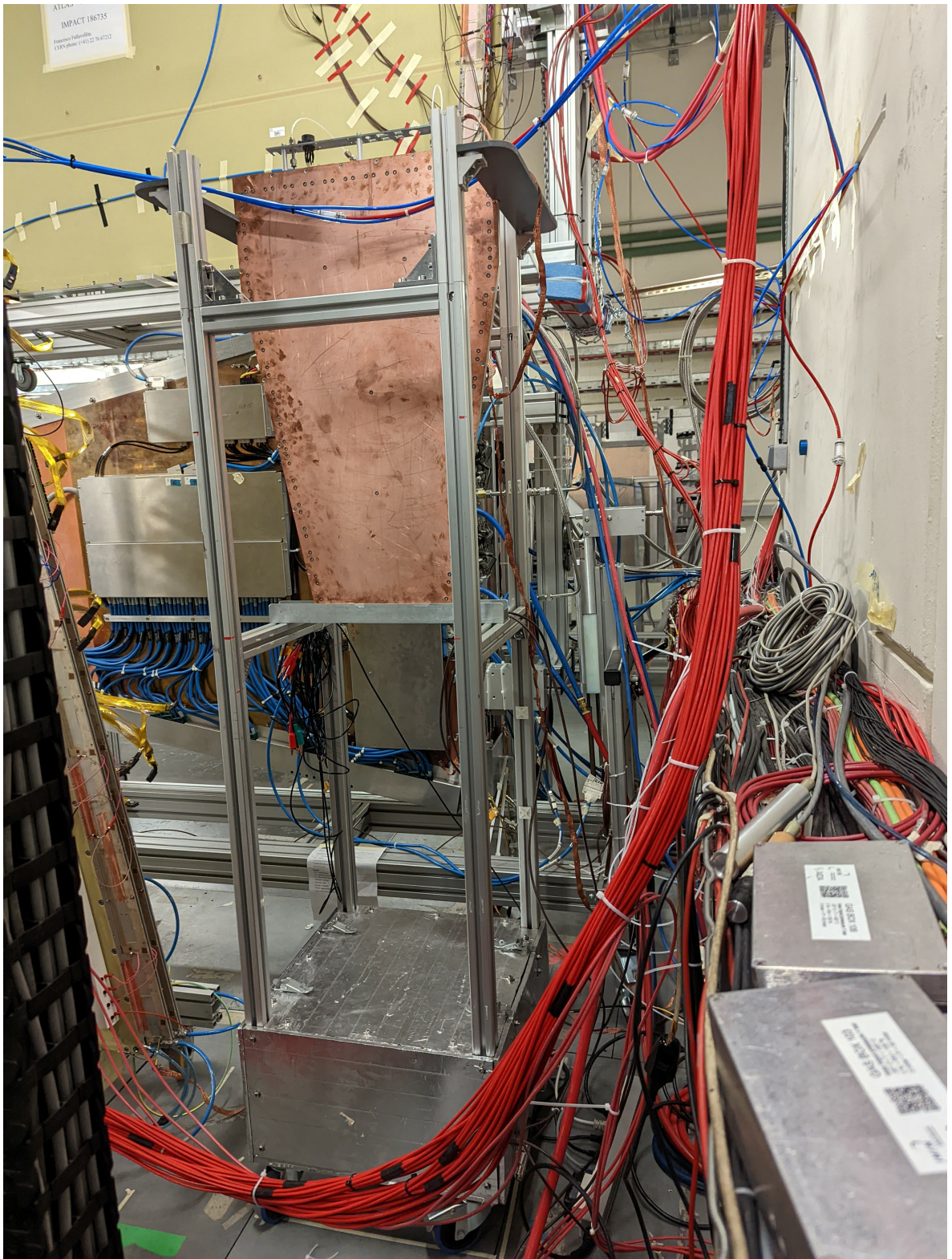
- still debugging DAQ for ME2/1, and will continue during these days. Planning updated on Team up calendar

CMS-GEM: (Davide, Michele, Ashok)

updated 16/03/2022

Slot for test beam: 13/07-20/7

- Setup successfully installed
- Flushing the gas line (w/o detector) up to next Wednesday (when the safety inspection will occur)
- If safety approves, the detector will be powered and calibration will start





ATLAS-sMDT (Elena)

During an unexpected power cut at the GIF++ facility on February 14, 2022, the following equipments have been damaged:

- the Baratron pressure sensor (in the gas rack)
- the computer system unit (it is DAQ PC in the electronics rack)

No news from the previous week (24.02 - 03.03)

Planned activities:

- The electronics are planned to be installed inside the setup. This means that the trolley with electronics will completely remove from the area between the irradiator and the wall.
- The readout system (+ the whole electronics chain) of the detectors is expected to be restarted for end of March.

ATL-SMDT beam time periods:

- week 17 : 25.04 - 03.05 - like a parasite for the updating and debugging of the DAQ and DCS systems
- week 20 : 18.05 - 24.05
- week 21 : 25.05 - 31.05
- week 22 : 01.06 - 07.06
- week 28/29 : 13.07 - 26.07
- week 42/43 : 19.10 - 01.11

Info of the setup for the TB periods:

Current ATLAS-SMDT setup will attend the test beam.

Setup dimension: 1m x 2m x 3m, no extra expansion of the setup planned for TB week 17.

Setup is housing multiple chambers with tube lengths up to 2m.

ProTOV

- No report this week. Currently off.
Need to find a new space for trolley.
Planned for next Wednesday.

EP-DT2: (Mattia)

- On Teamup, plan for long term measurements (~ 3 months): every morning 9-12 with fixed upstream attenuation (Cycle: 22, 69, 2.2, 10, 4.6), every Tuesday afternoon (14-17) fixed nominal attenuation 2.2 with one access (5 m) at the beginning and at the end of the measurements.
- Measurements foreseen for tomorrow are cancelled, thus everything will be postponed to Monday(21st), Tuesday(22nd) next week. Moreover, after next week measurements, there will be one week where no filter scan are planned.
- Test beam
 - We will participate to all the test beam with the setup already in the bunker. Probably the only exception will be the May test beam.

Ecogas: (Mapse, Luca, Gianluca)

- Weekly Planning:
 - RPCs are still flushed with Ar
 - still investigating HV issue with the ATLAS RPC setup
- Test Beam:

- We will participate in the July and October TB

CMS-RPC: (Mapse, Ece, Nicolas)

- Weekly Planning:

We cut the extra long profiles and move the trolley closer to EPDT throlly. Now the access distance is more than 110cm.

We calculated our rate at the current position, it is 2.09 kHz at 2.2 abs exactly as we wanted to have. So we would like to stay at this abs factor.

We would like only a 1h source off today.

Most probably in a week there will be an installation of another small chamber (40kg) on the trolley. More news in the coming weeks.

- Test Beam:

We would like to participate 8 weeks.

Week 20 would be low priority.

CMS-DT: (Lisa)

- weekly report:

- yesterday we installed a new monotube in the preparation area in our rack for HV/LV, flushed with the return gas from the MB2 chamber in the bunker

- weekly planning:

- continue irradiation at 2.2

- Test Beam:

- week 17 (from 25 April)
- week 21 (from 25 May)
- week 22 (from 01 June)

Current minutes by the respective speakers, edited and commented by Martin & Giuseppe.
Minutes from previous meetings can be found attached to the respective Indico page as PDF.