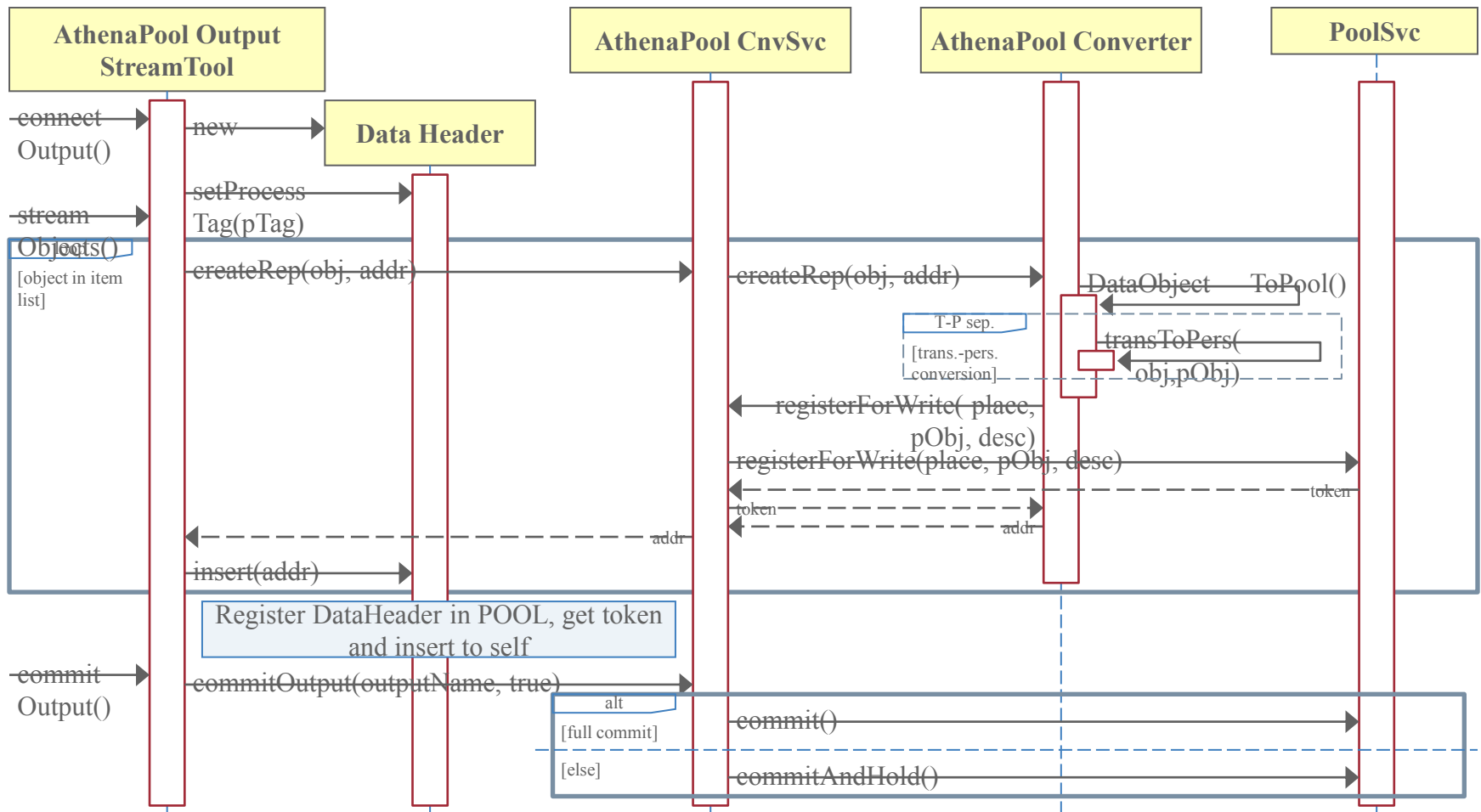
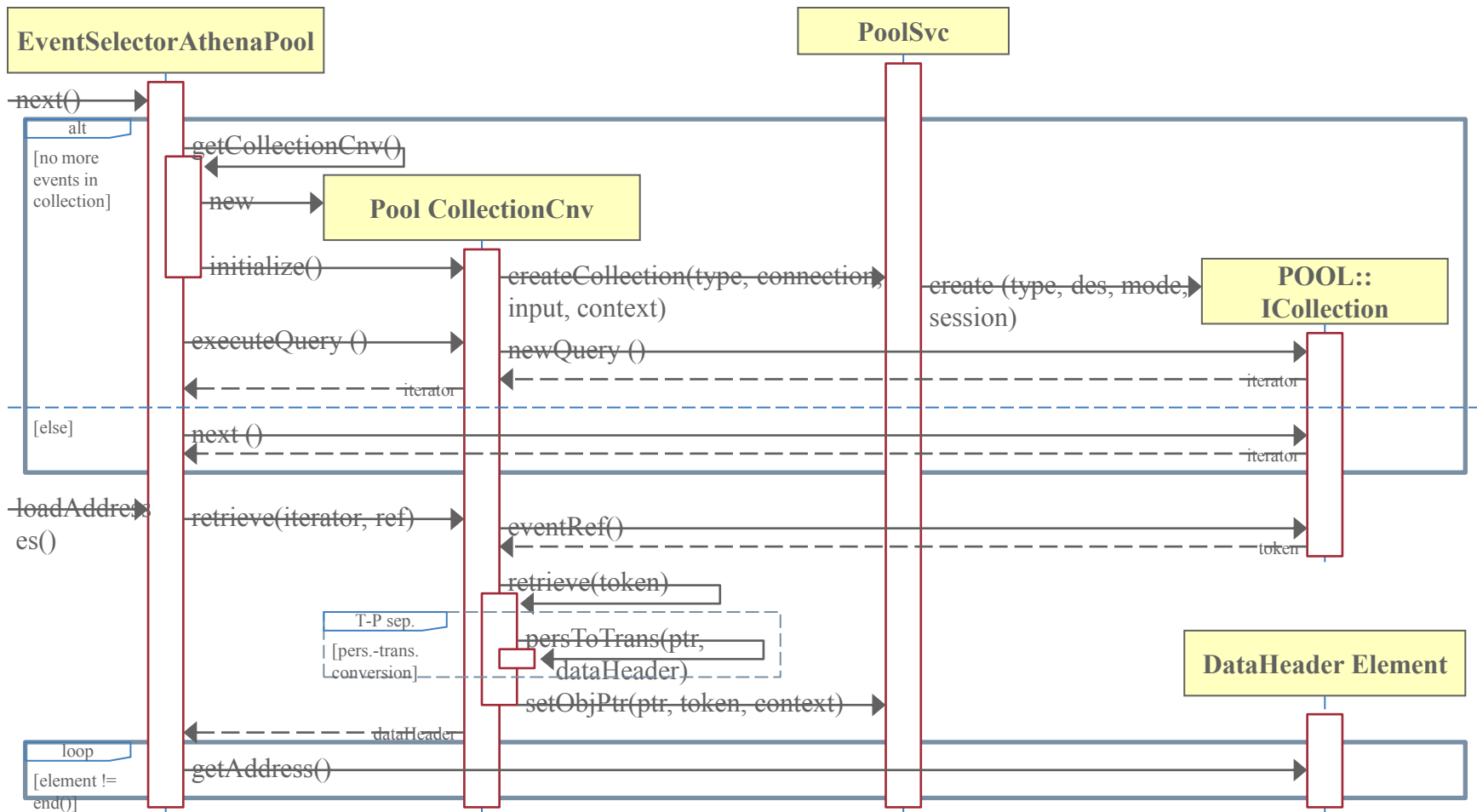


# ATLAS writing of event data via POOL



# ATLAS reading of event data via POOL



# POOL usage for ATLAS Event Data

## ■ PersistencySvc:

– ATLAS uses several POOL PersistencySvc instances:

- Input, Output, Conditions, on demand

1. -----

– **registerForWrite()** // for writing objects using POOL **Placement**

– **Placement.setContainerName()** // also used for TBranching

– **readObject()** // for reading objects using POOL Token

2. -----

– **session()** // share with Collection, use for **Transaction**

– **transaction()** // connect, commit and disconnect

3. -----

– **databaseHandle(), containerHandle()** // set **TechnologySpecificAttributes**

# POOL usage for ATLAS Event Data

- StorageSvc:
  - ATLAS uses POOL StorageSvc only via the PersistencySvc
  - 1. -----
  - **allocate(), read()** // writing and reading, using container name and Token
  - 2. -----
  - **startTransaction(), endTransaction()** // connect and commit
  - 3. -----
  - **StorageExplorer** // set Attributes
- RootStorageSvc:
  - Used only through StorageSvc
- Catalog:
  - Read Catalogs, Write Catalogs
  - **Start(), commit()** and **setAction()**