

# Linear Accelerators

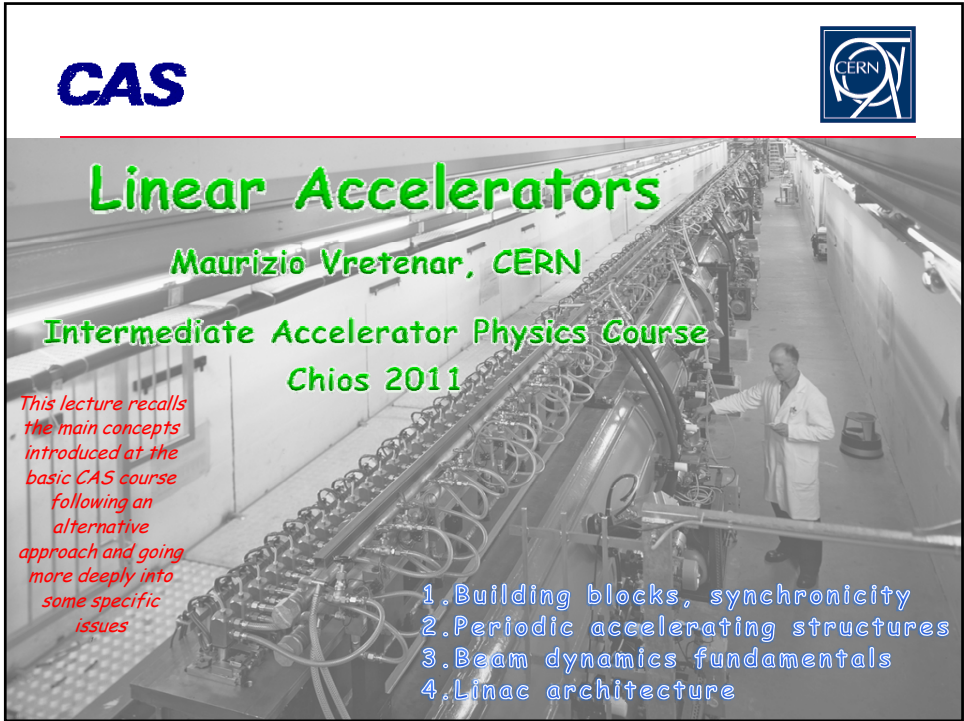
Maurizio Vretenar, CERN

Intermediate Accelerator Physics Course

Chios 2011

*This lecture recalls the main concepts introduced at the basic CAS course following an alternative approach and going more deeply into some specific issues*

1. Building blocks, synchronicity
2. Periodic accelerating structures
3. Beam dynamics fundamentals
4. Linac architecture



## 1. Introduction: building blocks, synchronicity



# CAS Why Linear Accelerators



Linear Accelerators are used for:

1. Low-Energy acceleration of protons and ions (injectors to synchrotrons or stand-alone): linacs can be **synchronous with the RF fields** in the range where **velocity increases with energy**. When velocity is ~constant, synchrotrons are more efficient (multiple crossings of the RF gaps instead of single crossing).  
Protons :  $\beta = v/c = 0.51$  at 150 MeV, 0.95 at 2 GeV.
2. High-Energy acceleration of high-intensity proton beams : in comparison with synchrotrons, linacs can go to **higher repetition rate**, are less affected by **resonances** and have more **distributed beam losses**. Higher injection energy from linacs to synchrotrons leads to **lower space charge effects** in the synchrotron and allows increasing the beam intensity.
3. Low and High-Energy acceleration of electron beams : in linacs electrons don't lose energy because of **synchrotron radiation**. Electron linacs are simple and compact (more than 5'000 e-linacs in the world for cancer therapy!), can be used for many applications (as the FEL) and are the only option to reach very high energies (ILC and CLIC).

3

# CAS

## Definitions



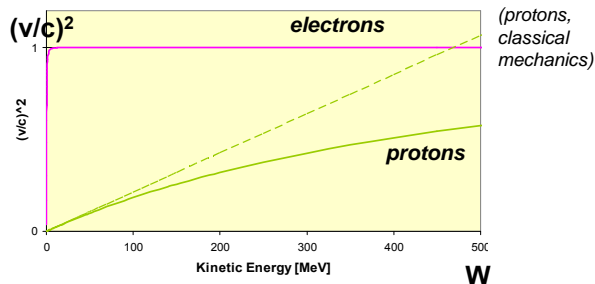
In linear accelerators the beam crosses only once the accelerating structures.  
**Protons, ions:** used in the region where the velocity of the particle beam increases with energy  
**Electrons:** used at all energies.

The periodicity of the RF structure must match the particle velocity → development of a complete panoply of structures (NC and SC) with different features.

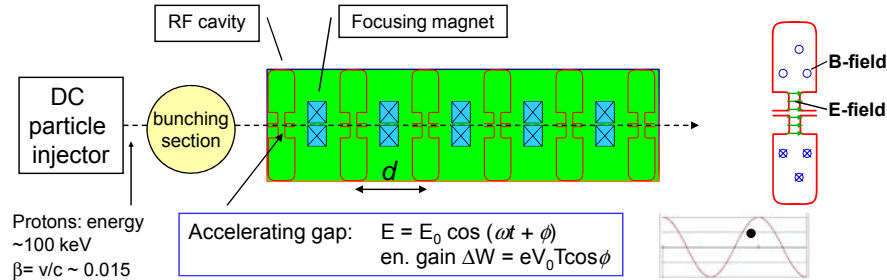
Protons and ions:  
 at the beginning of the acceleration, beta ( $=v/c$ ) is rapidly increasing, but after few hundred MeV's (protons) relativity prevails over classical mechanics ( $\beta \sim 1$ ) and particle velocity tends to saturate at the speed of light. The region of **increasing  $\beta$**  is the region of **linear accelerators**.

The region of **nearly constant  $\beta$**  is the region of **synchrotrons**.

Electrons:  
 Velocity= $c$  above few keV

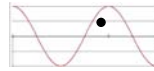


# Basic linear accelerator structure



Protons: energy ~100 keV  
 $\beta = v/c \sim 0.015$

Accelerating gap:  $E = E_0 \cos(\omega t + \phi)$   
 en. gain  $\Delta W = eV_0 T \cos \phi$



Acceleration → the beam has to pass in each cavity on a phase  $\phi$  near the crest of the wave

1. The beam must be **bunched** at frequency  $\omega$
2. **distance** between cavities and **phase** of each cavity must be correlated

Phase change from cavity  $i$  to  $i+1$  is  $\Delta\phi = \omega\tau = \omega \frac{d}{\beta c} = 2\pi \frac{d}{\beta\lambda}$

For the beam to be synchronous with the RF wave ("ride on the crest") phase must be related to distance by the relation:

$$\frac{\Delta\phi}{d} = \frac{2\pi}{\beta\lambda}$$

... and on top of acceleration, we need to introduce in our "linac" some **focusing elements**  
 ... and on top of that, we will couple a number of gaps in an "**accelerating structure**"

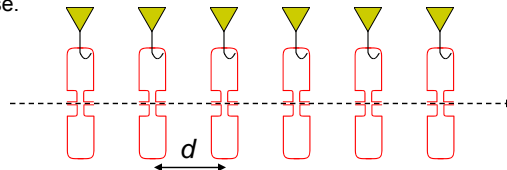
# Accelerating structure architecture



When  $\beta$  increases during acceleration, either the phase difference between cavities  $\Delta\phi$  must decrease or their distance  $d$  must increase.

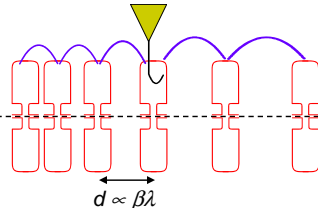
$$\frac{\Delta\phi}{d} = \frac{2\pi}{\beta\lambda}$$

$d = \text{const.}$   
 $\phi$  variable



**Individual cavities** – distance between cavities constant, each cavity fed by an individual RF source, phase of each cavity adjusted to keep synchronism, used for linacs required to operate with different ions or at different energies. Flexible but expensive!

$\phi = \text{const.}$   
 $d$  variable



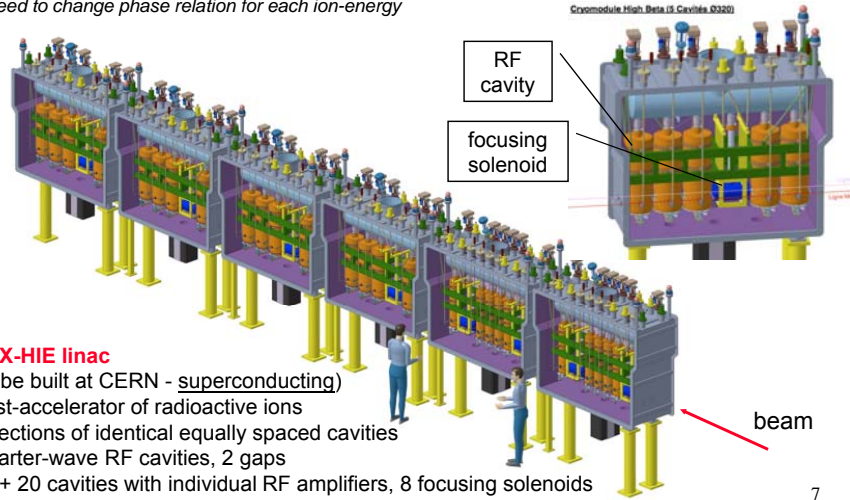
Better, but 2 problems:  
 1. create a "**coupling**";  
 2. create a mechanical and RF structure with increasing cell length.

**Coupled cell cavities** - a single RF source feeds a large number of cells (up to ~100!) - the phase between adjacent cells is defined by the coupling and the distance between cells increases to keep synchronism. Once the geometry is defined, it can accelerate only one type of ion for a given energy range. Effective but not flexible.

# CAS Case 1: a single-cavity linac



The goal is flexibility: acceleration of different ions ( $e/m$ ) at different energies  
 → need to change phase relation for each ion-energy

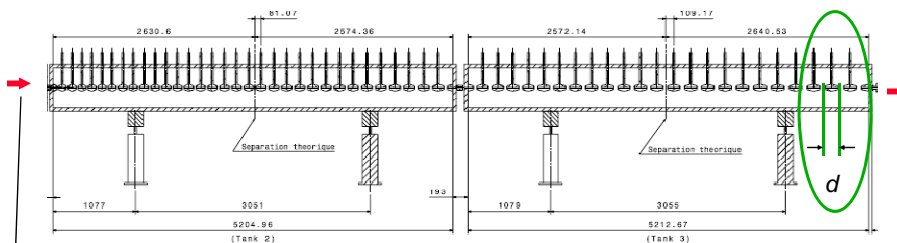


## REX-HIE linac

(to be built at CERN - superconducting)  
 Post-accelerator of radioactive ions  
 2 sections of identical equally spaced cavities  
 Quarter-wave RF cavities, 2 gaps  
 12 + 20 cavities with individual RF amplifiers, 8 focusing solenoids  
 Energy 1.2 → 10 MeV/u, accelerates different A/m

7

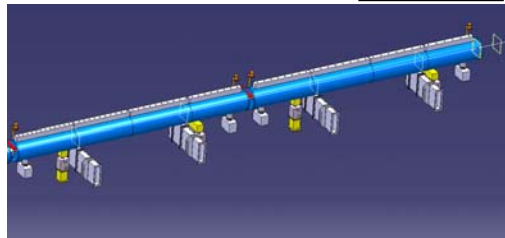
# CAS Case 2 : a Drift Tube Linac



10 MeV,  
 $\beta = 0.145$

50 MeV,  
 $\beta = 0.31$

Tank 2 and 3 of the new Linac4  
 at CERN:  
 57 coupled accelerating gaps  
 Frequency 352.2 MHz,  $\lambda = 85$  cm  
 Cell length ( $d = \beta\lambda$ ) from 12.3 cm  
 to 26.4 cm (factor 2 !).



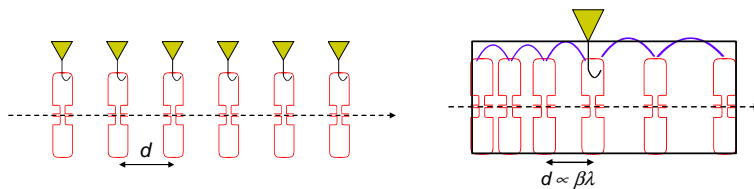
But:

Between these 2 "extremes" there are many "intermediate" cases, because:

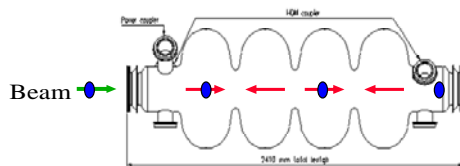
- a. Single-gap cavities are expensive (both cavity and RF source!).
- b. Structures with each cell matched to the beta profile are mechanically complicated and expensive.

→ as soon as the increase of beta with energy becomes small ( $\Delta\beta/\Delta W$ ) we can accept a small error and:

1. Use multi-gap cavities with constant distance between gaps.
2. Use series of identical cavities (standardised design and construction).



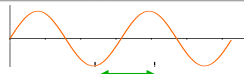
The distance between accelerating gaps is proportional to particle velocity



Example: a linac superconducting 4-cell accelerating structure

**Synchronism condition** bw. particle and wave  
 $t$  (travel between centers of cells) =  $T/2$

Electric field (at time  $t_0$ )



$d$  = distance between centres of consecutive cells

$$\frac{d}{\beta c} = \frac{1}{2f} \Rightarrow d = \frac{\beta c}{2f} = \frac{\beta \lambda}{2}$$

1. In an ion linac cell length has to increase (up to a factor 200 !), the linac will be made of a **sequence of different accelerating structures** (changing cell length, frequency, operating mode, etc.) matched to the ion velocity.
2. In sequences of (few) identical cells where  $\beta$  increases (acceleration) only the central cell will be synchronous, and in the other cells the beam will have a phase error.

"phase slippage"

$$\Delta\phi = \omega\Delta t = \pi \frac{\Delta\beta}{\beta}$$

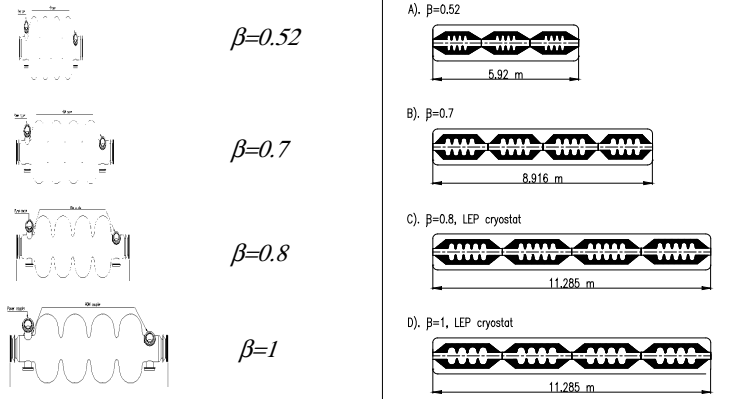
= phase error on a gap for a particle with  $\beta+\Delta\beta$  crossing a cell designed for  $\beta$

*High and unacceptable for low energy, becomes lower and acceptable for high  $\beta$*

# CAS Sections of identical cavities: a superconducting linac (medium $\beta$ )



The same superconducting cavity design can be used for different proton velocities. The linac has different sections, each made of cavities with cell length matched to the average beta in that section. At "medium energy" (>150 MeV) we are not obliged to dimension every cell or every cavity for the particular particle beta at that position, and we can accept a slight "asynchronicity" → phase slippage + reduction in acceleration efficiency from the optimum one.



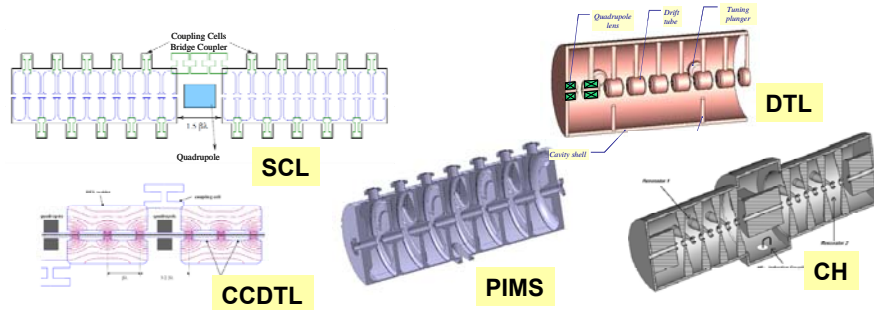
CERN (old) SPL design, SC linac 120 - 2200 MeV, 680 m length, 230 cavities

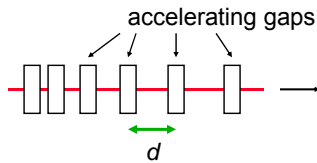
# CAS Multi-gap coupled-cell cavities



Between these 2 extreme case (array of independently phased single-gap cavities / single long chain of coupled cells with lengths matching the particle beta) there can be a large number of variations (number of gaps per cavity, length of the cavity, type of coupling) each optimized for a certain range of energy and type of particle.

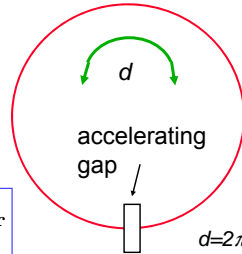
The goal of this lecture is to provide the background to understand the main features of these different structures...





$d = \beta\lambda/2 = \text{variable}$

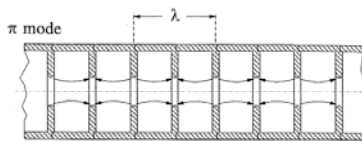
$$d = \frac{\beta c}{2f} = \frac{\beta\lambda}{2}, \beta c = 2df$$



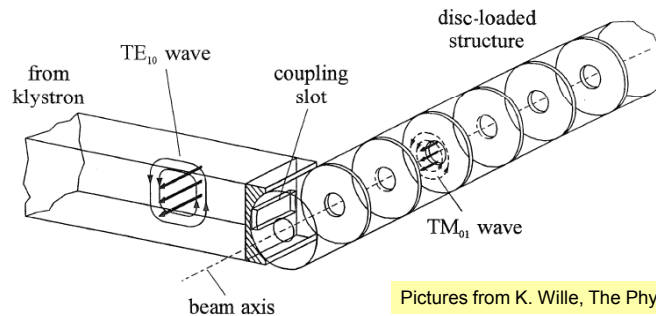
$d = 2\pi R = \text{constant}$

**Linear accelerator:**  
 Particles accelerated by a sequence of gaps (all at the same RF phase).  
 Distance between gaps increases proportionally to the particle velocity, to keep synchronicity.  
 Used in the range where  $\beta$  increases.  
 "Newton" machine

**Circular accelerator:**  
 Particles accelerated by one (or more) gaps at given positions in the ring.  
 Distance between gaps is fixed. Synchronicity only for  $\beta \sim \text{const}$ , or varying (in a limited range!) the RF frequency.  
 Used in the range where  $\beta$  is nearly constant.  
 "Einstein" machine

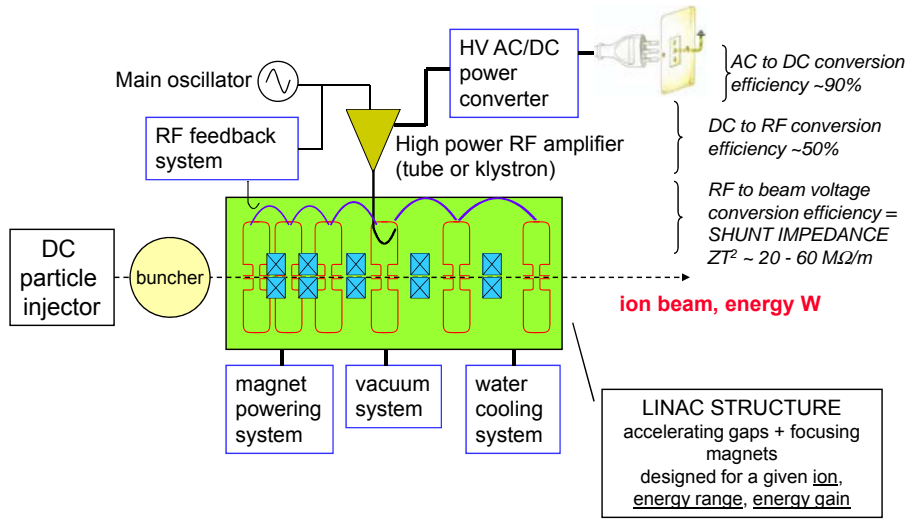


1. In an electron linac velocity is  $\sim$  constant. For using the fundamental accelerating mode cell length must be  $d = \beta\lambda / 2$ .
2. the linac structure will be made of a **sequence of identical cells**. Because of the limits of the RF source, the cells will be grouped in cavities operating in **travelling wave mode**.



Pictures from K. Wille, The Physics of Particle Accelerators

# CAS (Proton) linac building blocks

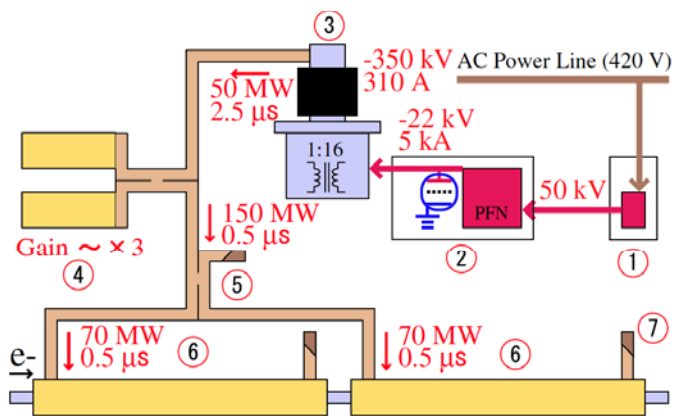


15

# CAS (Electron) linac building blocks



TSUMORU SHINTAKE *et al.*



16





What did we learn?

1. A linac is composed of an array of accelerating gaps, interlaced with focusing magnets (quadrupoles or solenoids), following an ion source with a DC extraction and a bunching section.
2. When beam velocity is increasing with energy ("Newton" regime), we have to match to the velocity (or to the relativistic  $\beta$ ) either the phase difference or the distance between two subsequent gaps.
3. We have to compromise between synchronicity (distance between gaps matched to the increasing particle velocity) and simplicity (number of gaps on the same RF source, sequences of identical cavities). At low energies we have to follow closely the synchronicity law, whereas at high energies we have a certain freedom in the number of identical cells/identical cavities.
4. Proton and electron linacs have similar architectures; proton linacs usually operate in standing wave mode, and electron linacs in traveling wave mode.

17

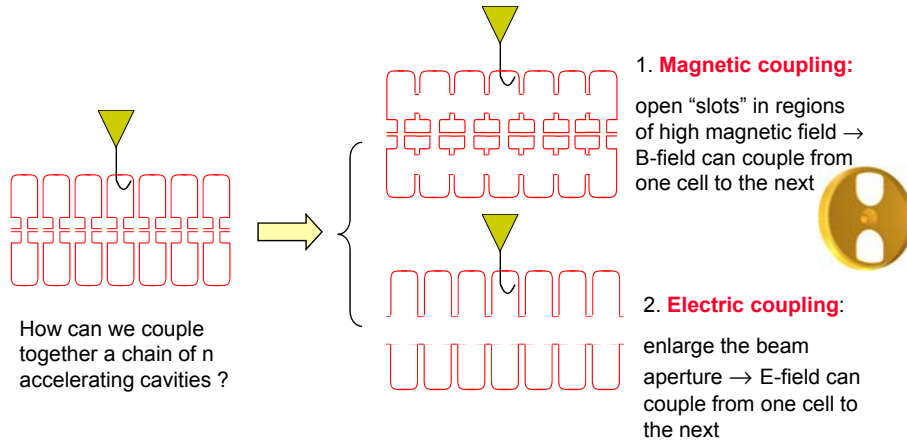


## 2 -Accelerating Structures



18

# CAS Coupling accelerating cells

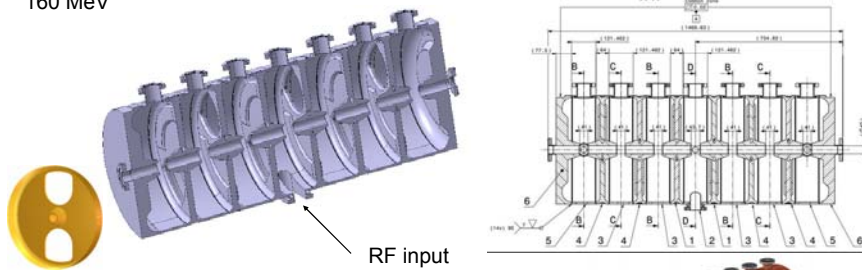


The effect of the coupling is that the cells no longer resonate independently, but will have common resonances with well defined field patterns.

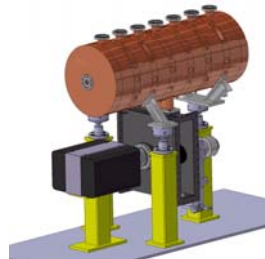
# CAS A 7-cell magnetically-coupled structure: the PIMS



PIMS = Pi-Mode Structure, will be used in Linac4 at CERN to accelerate protons from 100 to 160 MeV

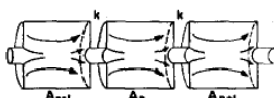


This structure is composed of 7 accelerating cells, magnetically coupled.  
The cells in a cavity have the same length, but they are longer from one cavity to the next, to follow the increase in beam velocity.

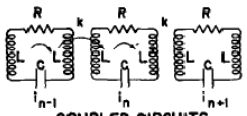




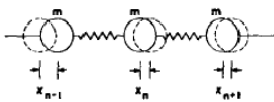
What is the relative phase and amplitude between cells in a chain of coupled cavities?



COUPLED CAVITIES



COUPLED CIRCUITS



LINEAR LATTICE

A linear chain of accelerating cells can be represented as a chain of resonant circuits magnetically coupled.

Individual cavity resonating at  $\omega_0 \rightarrow$  frequenci(es) of the coupled system ?

Resonant circuit equation for circuit  $i$  ( $R \equiv 0$ ):

$$I_i(2j\omega L + \frac{1}{j\omega C}) + j\omega k L(I_{i-1} + I_{i+1}) = 0$$

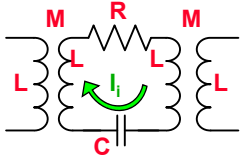
Dividing both terms by  $2j\omega L$ :

$$X_i(1 - \frac{\omega_0^2}{\omega^2}) + \frac{k}{2}(X_{i-1} + X_{i+1}) = 0$$

General response term,  $\propto (\text{stored energy})^{1/2}$ , can be voltage, E-field, B-field, etc.

General resonance term

Contribution from adjacent oscillators



$$\omega_0 = 1/\sqrt{2LC}$$

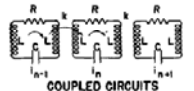


$$X_i(1 - \frac{\omega_0^2}{\omega^2}) + \frac{k}{2}(X_{i-1} + X_{i+1}) = 0$$

$i = 0, \dots, N$



COUPLED CAVITIES



COUPLED CIRCUITS



LINEAR LATTICE

A chain of N+1 resonators is described by a (N+1)x(N+1) matrix:

$$\begin{pmatrix} 1 - \frac{\omega_0^2}{\omega^2} & \frac{k}{2} & 0 & \dots \\ \frac{k}{2} & 1 - \frac{\omega_0^2}{\omega^2} & \frac{k}{2} & \dots \\ \dots & \dots & \dots & \dots \\ 0 & 0 & \frac{k}{2} & 1 - \frac{\omega_0^2}{\omega^2} \end{pmatrix} \begin{pmatrix} X_0 \\ X_2 \\ \dots \\ X_N \end{pmatrix} = 0 \quad \text{or} \quad M X = 0$$

This matrix equation has solutions only if  $\det M = 0$

Eigenvalue problem!

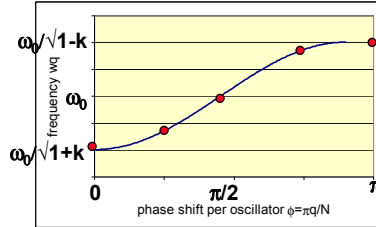
1. System of order (N+1) in  $\omega \rightarrow$  only N+1 frequencies will be solution of the problem ("eigenvalues", corresponding to the resonances)  $\rightarrow$  a system of N coupled oscillators has N resonance frequencies  $\rightarrow$  an *individual resonance opens up into a band of frequencies*.
2. At each frequency  $\omega_i$  will correspond a set of relative amplitudes in the different cells ( $X_0, X_2, \dots, X_N$ ): the "eigenmodes" or "**modes**".



We can find an analytical expression for eigenvalues (frequencies) and eigenvectors (modes):

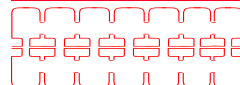
Frequencies of the coupled system :  $\omega_q^2 = \frac{\omega_0^2}{1 + k \cos \frac{\pi q}{N}}$ ,  $q = 0, \dots, N$  the index q defines the number of the solution → is the "mode index"

→ Each mode is characterized by a phase  $\pi q/N$ . Frequency vs. phase of each mode can be plotted as a "dispersion curve"  $\omega=f(\phi)$ :  
 1. each mode is a point on a sinusoidal curve.  
 2. modes are equally spaced in phase.

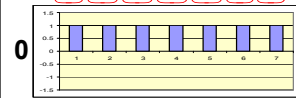


The "eigenvectors" = relative amplitude of the field in the cells are:  $X_i^{(q)} = (const) \cos \frac{\pi qi}{N} e^{j\omega_q t}$   $q = 0, \dots, N$

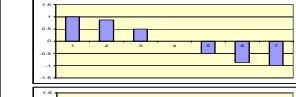
→ **STANDING WAVE MODES**, defined by a phase  $\pi q/N$  corresponding to the phase shift between an oscillator and the next one →  $\pi q/N = \Phi$  is the phase difference between adjacent cells that we have introduced in the 1st part of the lecture.



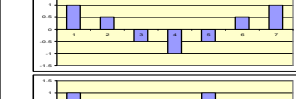
$X_i^{(q)} = (const) \cos \frac{\pi qi}{N} e^{j\omega_q t}$   $q = 0, \dots, N$   $\Delta\phi = 2\pi \frac{d}{\beta\lambda}$



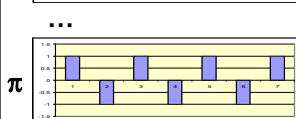
$\Phi = 2\pi$ ,  $2\pi \frac{d}{\beta\lambda} = 2\pi$ ,  $d = \beta\lambda$   
 $\omega = \omega_0 \sqrt{1+k}$   
 0 (or  $2\pi$ ) mode, acceleration if  $d = \beta\lambda$



Intermediate modes



$\Phi = \frac{\pi}{2}$ ,  $2\pi \frac{d}{\beta\lambda} = \frac{\pi}{2}$ ,  $d = \frac{\beta\lambda}{4}$   $\omega = \omega_0$   
 $\pi/2$  mode, acceleration if  $d = \beta\lambda/4$



$\Phi = \pi$ ,  $\pi \frac{d}{\beta\lambda} = 2\pi$ ,  $d = \frac{\beta\lambda}{2}$   $\omega = \omega_0 \sqrt{1-k}$   
 $\pi$  mode, acceleration if  $d = \beta\lambda/2$

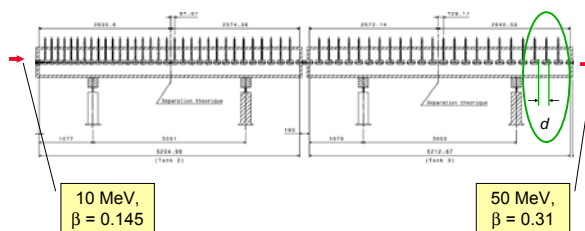
Note: Field always maximum in first and last cell!

Note: our relations depend only on the cell frequency  $\omega$ , not on the cell length  $d$  !!!

$$\omega_q^2 = \frac{\omega_0^2}{1 + k \cos \frac{\pi q}{N}}, \quad q = 0, \dots, N$$

$$X_n^{(q)} = (const) \cos \frac{\pi q n}{N} e^{j\omega_q t} \quad q = 0, \dots, N$$

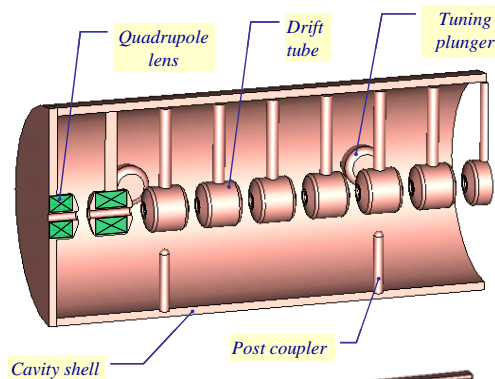
→ As soon as we keep the frequency of each cell constant, we can change the cell length following any acceleration ( $\beta$ ) profile!



Example:  
The Drift Tube Linac (DTL)  
Chain of many (up to 100!) accelerating cells operating in the 0 mode. The ultimate coupling slot: no wall between the cells!

Each cell has a different length, but the cell frequency remains constant → "the EM fields don't see that the cell length is changing!" 25

$d \uparrow \rightarrow (L \uparrow, C \downarrow) \rightarrow LC \sim const \rightarrow \omega \sim const$

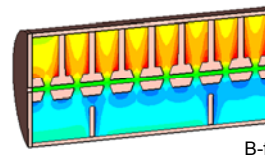
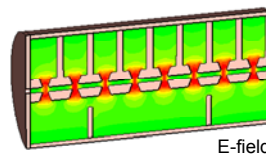


Standing wave linac structure for protons and ions,  $\beta=0.1-0.5$ ,  $f=20-400$  MHz

Drift tubes are suspended by stems (no net RF current on stem)

Coupling between cells is maximum (no slot, fully open!)

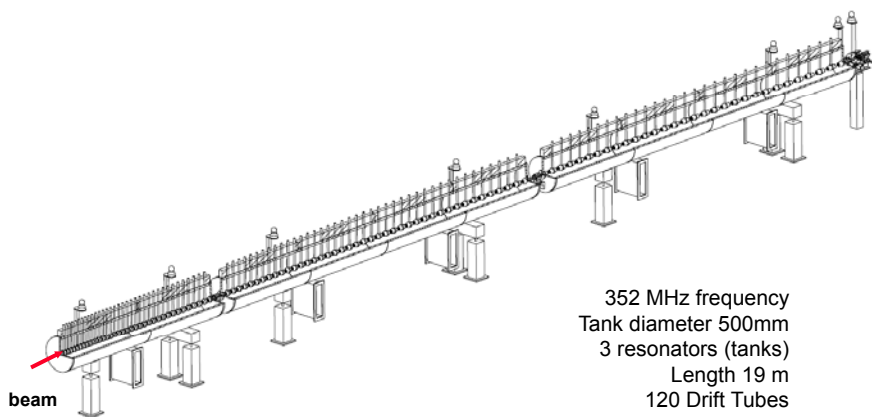
The 0-mode allows a long enough cell ( $d=\beta\lambda$ ) to house focusing quadrupoles inside the drift tubes!





Top; CERN Linac2 Drift Tube Linac accelerating tank 1 (200 MHz). The tank is 7m long (diameter 1m) and provides an energy gain of 10 MeV.  
 Left: DTL prototype for CERN Linac4 (352 MHz). Focusing is provided by (small) quadrupoles inside drift tubes. Length of drift tubes (cell length) increases with proton velocity.

27



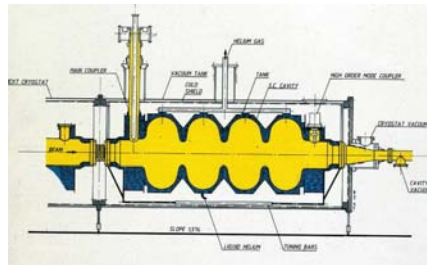
352 MHz frequency  
 Tank diameter 500mm  
 3 resonators (tanks)  
 Length 19 m  
 120 Drift Tubes  
 Energy 3 MeV to 50 MeV  
 Beta 0.08 to 0.31 → cell length ( $\beta\lambda$ ) 68mm to 264mm  
 → factor 3.9 increase in cell length

28

# Multi-gap Superconducting linac structures (elliptical)



Standing wave structures for particles at  $\beta > 0.5-0.7$ , widely used for protons (SNS, etc.) and electrons (ILC, etc.)  
 $f = 350-700$  MHz (protons),  
 $f = 350$  MHz - 3 GHz (electrons)  
 Chain of cells electrically coupled, large apertures ( $ZT^2$  not a concern).  
 Operating in  $\pi$ -mode, cell length  $\beta\lambda/2$   
 Input coupler placed at one end.



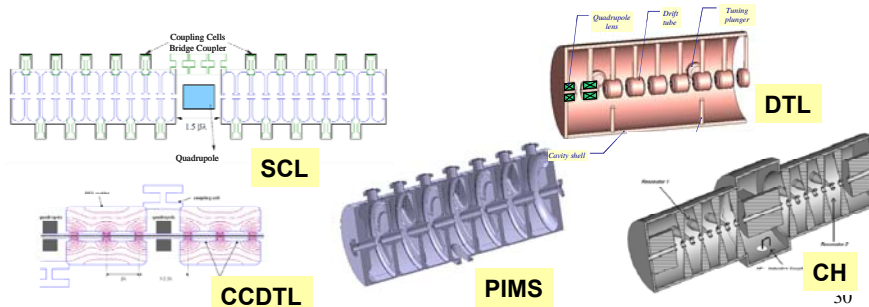
# The normal conducting zoo



For normal-conducting, the goal is designing high-efficiency structures with a large number of cells (higher power RF sources are less expensive).

Two important trends:

1. Use  $\pi/2$  modes for stability of long chains of resonators  $\rightarrow$  CCDTL (Cell-Coupled Drift Tube Linac), SCL (Side Coupled Linac), ACS (Annular Coupled Structure),....
2. Use alternative modes: H-mode structures (TE band)  $\rightarrow$  Interdigital IH, CH





Spoke (low beta)  
[FZJ, Orsay]



4 gaps

CH (low/medium beta)  
[IAP-FU]



10 gaps

QWR (low beta)  
[LNL, etc.]



2 gaps

HWR (low beta)  
[FZJ, LNL, Orsay]

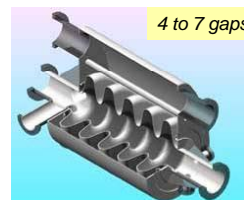


2 gaps

Re-entrant  
[LNL]



1 gap



4 to 7 gaps

Elliptical cavities [CEA, INFN-MI, CERN, ...]

31

Superconducting structure for linacs can have a small number of gaps → used for low and medium beta.

Elliptical structures with more gaps (4 to 7) are used for medium and high beta.



What happens if we have an infinite chain of oscillators?

$$\omega_q^2 = \frac{\omega_0^2}{1 + k \cos \frac{\pi q}{N}}, \quad q = 0, \dots, N$$

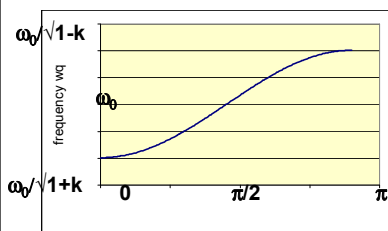
becomes (N → ∞)

$$\omega^2 = \frac{\omega_0^2}{1 + k \cos \varphi}$$

$$X_n^{(q)} = (const) \cos \frac{\pi q n}{N} e^{j\omega_q t}, \quad q = 0, \dots, N$$

becomes (N → ∞)

$$X_i = (const) e^{j\omega t}$$



All modes in the dispersion curve are allowed, the original frequency degenerates into a continuous band. The field is the same in each cell, there are no more standing wave modes → only “traveling wave modes”, if we excite the EM field at one end of the structure it will propagate towards the other end.

But: our dispersion curve remains valid, and defines the velocity of propagation of the travelling wave,  $v_\phi = \omega/d\Phi$

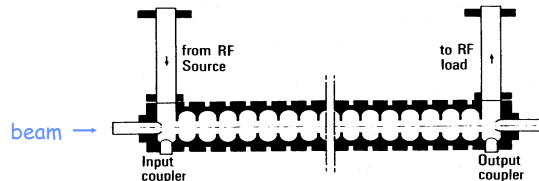
For acceleration, the wave must propagate at  $v_\phi = c$

→ for each frequency  $\omega$  and cell length  $d$  we can find a phase  $\Phi$  where the apparent velocity of the wave  $v_\phi$  is equal to  $c$

32



How to "simulate" an infinite chain of resonators? Instead of a single input, exciting a standing wave mode, use an input + an output for the RF wave at both ends of the structure.



"Disc-loaded waveguide" or chain of electrically coupled cells characterized by a continuous band of frequencies. In the chain is excited a "traveling wave mode" that has a propagation velocity  $v_{ph} = \omega/k$  given by the dispersion relation.

For a given frequency  $\omega$ ,  $v_{ph} = c$  and the structure can be used for particles traveling at  $\beta=1$

The "traveling wave" structure is the standard linac for **electrons from  $\beta \sim 1$** .

→ Can **not** be used for protons at  $v < c$ :

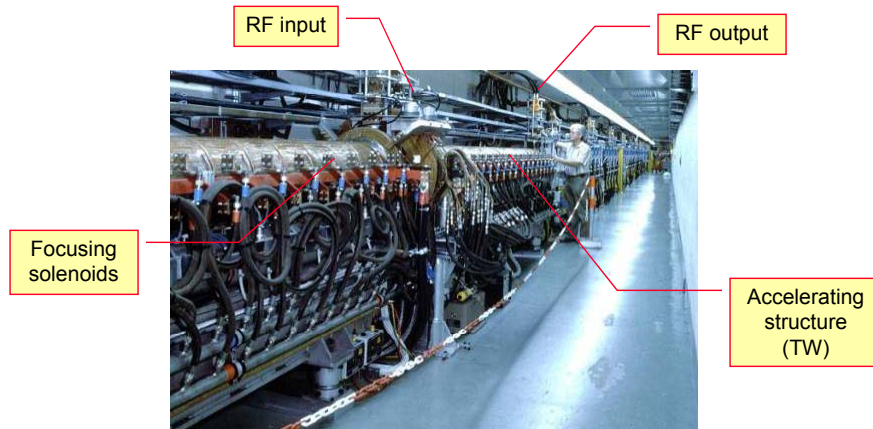
1. constant cell length does not allow synchronism
2. structures are long, without space for transverse focusing

33



A 3 GHz LIL accelerating structure used for CTF3. It is 4.5 meters long and provides an energy gain of 45 MeV. One can see 3 quadrupoles around the RF structure.

34



The old CERN LIL (LEP Injector Linac) accelerating structures (3 GHz). The TW structure is surrounded by focusing solenoids, required for the positrons.

35



What did we learn?

1. Coupling together accelerating cells (via the magnetic or electric field) is a way to fix their phase relation.
2. A chain of  $N$  coupled resonators will always have  $N$  modes of oscillation. Each mode will have a resonance frequency and a field pattern with a corresponding phase shift from cell to cell.
3. Choosing the excitation frequency, we can decide in which mode to operate the structure, and we can select a mode with a phase advance between cells suitable for acceleration. If we change the length of a cell without changing its frequency, we can follow the increase the particle velocity.
4. Practical linac structures operate either on mode 0 (DTL), less efficient but leaving space for internal focusing elements, or on mode  $\pi$ , standard for multi-cell cavities. More exotic modes ( $\pi/2$ , TE) are used in special cases.
5. Electron linacs operate with long chains of identical cells excited by a traveling wave, propagating at the (constant) velocity of the beam.

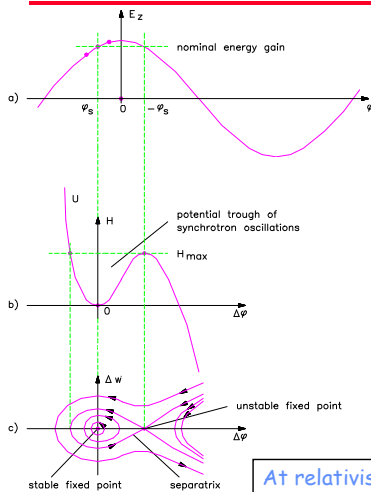
36

### 3 - Fundamentals of linac beam dynamics



37

### Longitudinal dynamics



→ Ions are accelerated around a (negative = linac definition) synchronous phase.

→ Particles around the synchronous one perform oscillations in the longitudinal phase space.

→ Frequency of small oscillations:

$$\omega_l^2 = \omega_0^2 \frac{qE_0 T \sin(-\varphi)\lambda}{2\pi mc^2 \beta \gamma^3}$$

→ Tends to zero for relativistic particles  $\gamma \gg 1$ .

→ Note phase damping of oscillations:

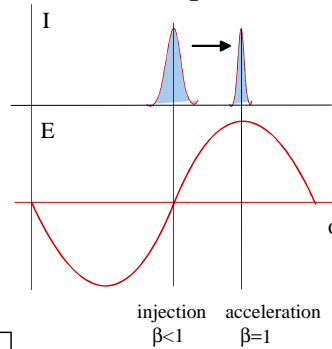
$$\Delta\varphi = \frac{const}{(\beta \gamma)^{3/4}} \quad \Delta W = const \times (\beta \gamma)^{3/4}$$

At relativistic velocities phase oscillations stop, and the beam is compressed in phase around the initial phase. The crest of the wave can be used for acceleration.

38

- Electrons at  $v=c$  remain at the injection phase.
- Electrons at  $v < c$  injected into a TW structure designed for  $v=c$  will move from injection phase  $\varphi_0$  to an asymptotic phase  $\varphi$ , which depends only on gradient and  $\beta_0$  at injection.
- The beam can be injected with an offset in phase, to reach the crest of the wave at  $\beta=1$
- **Capture condition**, relating  $E_0$  and  $\beta_0$ :

$$\sin \varphi = \sin \varphi_0 + \frac{2\pi mc^2}{\lambda_g qE_0} \left[ \sqrt{\frac{1-\beta_0}{1+\beta_0}} - \sqrt{\frac{1-\beta}{1+\beta}} \right]$$

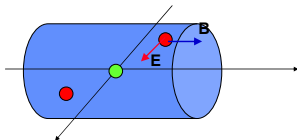


$$\frac{2\pi mc^2}{\lambda_g qE_0} \left[ \sqrt{\frac{1-\beta_0}{1+\beta_0}} \right] = 1$$

Example:  $\lambda=10\text{cm}$ ,  $W_{in}=150\text{ keV}$  and  $E_0=8\text{ MV/m}$ .

In high current linacs, a bunching and pre-acceleration sections up to 4-10 MeV prepares the injection in the TW structure (that occurs already on the crest)

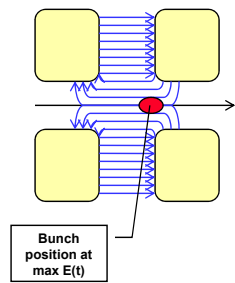
- Large numbers of particles per bunch ( $\sim 10^{10}$ ).
- Coulomb repulsion between particles (space charge) plays an important role.
- But **space charge forces  $\sim 1/\gamma^2$  disappear at relativistic velocity**



Force on a particle inside a long bunch with density  $n(r)$  traveling at velocity  $v$ :

$$E_r = \frac{e}{2\pi\epsilon r} \int_0^r n(r) r dr \quad B_\phi = \frac{\mu}{2\pi} \frac{ev}{r} \int_0^r n(r) r dr$$

$$F = e(E_r - vB_\phi) = eE_r \left(1 - \frac{v^2}{c^2}\right) = eE_r (1 - \beta^2) = \frac{eE_r}{\gamma^2}$$



- RF defocusing experienced by particles crossing a gap on a longitudinally stable phase.
- In the rest frame of the particle, only electrostatic forces → no stable points (maximum or minimum) → radial defocusing.
- Lorentz transformation and calculation of radial momentum impulse per period (from electric and magnetic field contribution in the laboratory frame):

$$\Delta p_r = -\frac{\pi e E_0 T L r \sin \varphi}{c \beta^2 \gamma^2 \lambda}$$

- Transverse defocusing  $\sim 1/\gamma^2$  disappears at relativistic velocity (transverse magnetic force cancels the transverse RF electric force).



The equilibrium between external focusing force and internal defocusing forces defines the **frequency of beam oscillations**.

Oscillations are characterized in terms of *phase advance per focusing period*  $\sigma_r$  or *phase advance per unit length*  $k_r$ .

Ph. advance = Ext. quad focusing - RF defocusing - space charge

$$k_r^2 = \left( \frac{\sigma_r}{N\beta\lambda} \right)^2 = \left( \frac{qGl}{2mc\beta\gamma} \right)^2 - \frac{\pi q E_0 T \sin(-\varphi)}{mc^2 \lambda \beta^3 \gamma^3} - \frac{3qI\lambda(1-f)}{8\pi\epsilon_0 r_0^3 mc^3 \beta^2 \gamma^3}$$

q=charge  
G=quad gradient  
l=length foc. element  
f=bunch form factor  
r<sub>0</sub>=bunch radius  
λ=wavelength  
...

Approximate expression valid for:  
FODO lattice, smooth focusing approximation, space charge of a uniform 3D ellipsoidal bunch.

A "low-energy" linac is dominated by space charge and RF defocusing forces !!

Phase advance per period must stay in reasonable limits (30-80 deg), phase advance per unit length must be continuous (smooth variations) → at low β, we need a strong focusing term to compensate for the defocusing, but the limited space limits the achievable G and I → needs to use short focusing periods N βλ.

Note that the RF defocusing term ∝ f sets a higher limit to the basic linac frequency (whereas for shunt impedance considerations we should aim to the highest possible frequency, Z ∝ √f).



Focusing usually provided by quadrupoles.

Need to keep the **phase advance in the good range**, with an approximately constant phase advance per unit length → The **length of the focusing periods has to change** along the linac, going gradually from **short periods** in the initial part (to compensate for high space charge and RF defocusing) to **longer periods** at high energy.

**For Protons** (high beam current and high space charge), distance between two quadrupoles ( $\approx 1/2$  of a FODO focusing period):

- $\beta\lambda$  in the DTL, from  $\sim 70\text{mm}$  (3 MeV, 352 MHz) to  $\sim 250\text{mm}$  (40 MeV),
- can be increased to  $4\text{-}10\beta\lambda$  at higher energy ( $>40$  MeV).
- longer focusing periods require special dynamics (example: the IH linac).

**For Electrons** (no space charge, no RF defocusing):  
focusing periods up to several meters, depending on the required beam conditions. Focusing is mainly required to control the emittance. <sup>43</sup>



What did we learn?

1. Transverse beam dynamics in linacs is dominated by space charge and RF defocusing forces.
2. In order to keep the transverse phase advance within reasonable limits, focusing has to be strong (large focusing gradients, short focusing periods) at low energy, and can then be relaxed at higher energy.
3. A usual linac is made of a sequence of structures, matched to the beam velocity, and where the length of the focusing period increases with energy.
4. The very low energy section remains a special problem → next lecture

## 4. Linac architecture

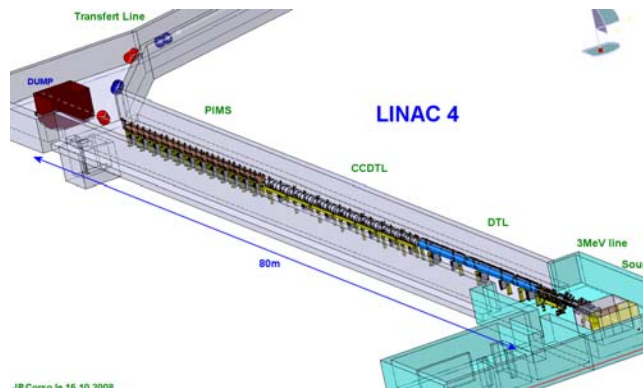


45

## Architecture: cell length, focusing period

**EXAMPLE:** the [Linac4 project at CERN](#). H-, 160 MeV energy, 352 MHz.  
A 3 MeV injector + 22 multi-cell standing wave accelerating structures of 3 types

- DTL:** every cell is different, focusing quadrupoles in each drift tube
- CCDTL:** sequences of 2 identical cells, quadrupoles every 3 cells
- PIMS:** sequences of 7 identical cells, quadrupoles every 7 cells



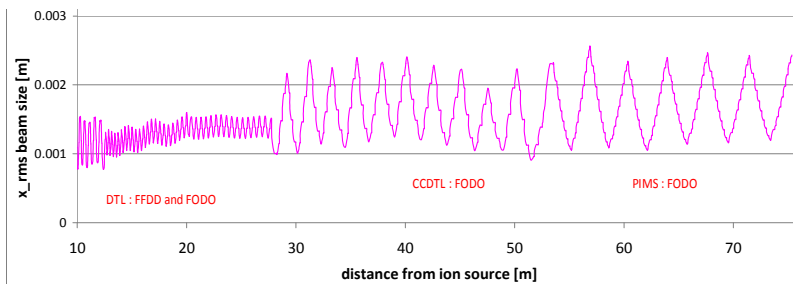
JP.Corso le 16.10.2008



Two basic principles to remember:

1. As beta increases, phase error between cells of identical length becomes small → we can have **short sequences of identical cells** (lower construction costs).
2. As beta increases, the **distance between focusing elements can increase**.

Transverse (x) r.m.s. beam envelope along Linac4



Example: beam dynamics design for Linac4@CERN.

High intensity protons (60 mA bunch current, duty cycle could go up to 5%), 3 - 160 MeV

Beam dynamics design minimising emittance growth and halo development in order to:

1. **avoid uncontrolled beam loss** (activation of machine parts)
2. **preserve small emittance** (high luminosity in the following accelerators)

47

approximate scaling laws for linear accelerators:

⇒ RF defocusing (ion linacs)	~ frequency
⇒ Cell length ( $=\beta\lambda/2$ )	~ (frequency) <sup>-1</sup>
⇒ Peak electric field	~ (frequency) <sup>1/2</sup>
⇒ Shunt impedance (power efficiency)	~ (frequency) <sup>1/2</sup>
⇒ Accelerating structure dimensions	~ (frequency) <sup>-1</sup>
⇒ Machining tolerances	~ (frequency) <sup>-1</sup>

- Higher frequencies are economically convenient (shorter, less RF power, higher gradients possible) but the limitation comes from mechanical precision required in construction (tight tolerances are expensive!) and beam dynamics for ion linacs.
- The main limitation to the initial frequency (RFQ) comes from RF defocusing ( $\sim 1/(\lambda\beta^2\gamma^2)$  - 402 MHz is the maximum achievable so far for currents in the range of tens of mA's.
- High-energy linacs have one or more frequency jumps (start 200-400 MHz, first jump to 400-800 MHz, possible a 3<sup>rd</sup> jump to 600-1200 MHz): compromise between focusing, cost and size.

48



**Advantages** of Superconductivity:

- Much smaller RF system (only beam power) → prefer low current/high duty
- Larger aperture (lower beam loss).
- Lower operating costs (electricity consumption).
- Higher gradients (because of less impurities?)



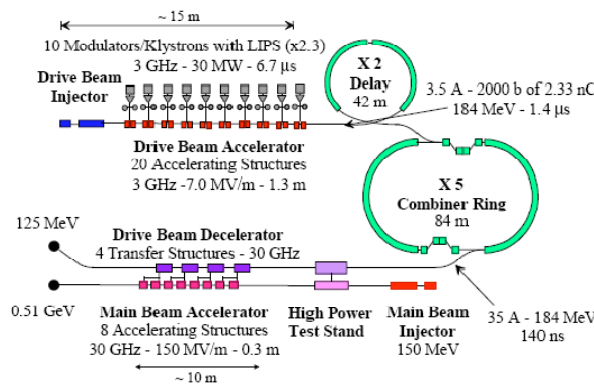
**Disadvantages** of Superconductivity:

- Need cryogenic system (in pulsed machines, size dominated by static loss → prefer low repetition frequency or CW to minimize filling time/beam time).
- In proton linacs, need cold/warm transitions to accommodate quadrupoles → becomes more expensive at low energy (short focusing periods).
- Individual gradients difficult to predict (large spread) → for protons, need large safety margin in gradient at low energy.

**Conclusions:**

1. Superconductivity gives a large advantage in cost at high energy (protons)/ high duty cycle.
2. At low proton energy / low duty cycle superconducting sections become expensive. 49

**EXAMPLE:** the CLIC Test facility (CTF) at CERN: drive linac, 3 GHz, 184 MeV.  
 An injector + a sequence of 20 identical multi-cell traveling wave accelerating structures.  
 Main beam accelerator: 8 identical accelerating structures at 30 GHz, 150-510 MeV





What did we learn?

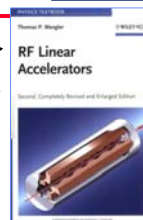
1. A proton linac is always made of different sections optimized for a particular range of beta. Each section is characterized by its RF frequency, by the periodicity of the RF structure and by the focusing distance. The frequency of the first section (RFQ) is limited by beam dynamics (RF defocusing). In the following sections, the frequency can be increased (by multiples of the basic frequency), to gain in efficiency.
2. Superconductivity gives a clear advantage in cost to linacs operating at high duty cycle.

51



### 1. Reference Books:

- T. Wangler, Principles of RF Linear Accelerators (Wiley, New York, 1998). →
- P. Lapostolle, A. Septier (editors), Linear Accelerators (Amsterdam, North Holland, 1970).
- I.M. Kapchinskij, Theory of resonance linear accelerators (Harwood, Chur, 1985).
- K. Wille, The physics of particle accelerators (Oxford Press, Oxford, 2001).



### 2. General Introductions to linear accelerators

- M. Puglisi, The Linear Accelerator, in E. Persico, E. Ferrari, S.E. Segré, Principles of Particle Accelerators (W.A. Benjamin, New York, 1968).
- P. Lapostolle, Proton Linear Accelerators: A theoretical and Historical Introduction, LA-11601-MS, 1989.
- P. Lapostolle, M. Weiss, Formulae and Procedures useful for the Design of Linear Accelerators, CERN-PS-2000-001 (DR), 2000.
- P. Lapostolle, R. Jameson, Linear Accelerators, in Encyclopaedia of Applied Physics (VCH Publishers, New York, 1991).

### 3. CAS Schools

- S. Turner (ed.), CAS School: Cyclotrons, Linacs and their applications, CERN 96-02 (1996).
- M. Weiss, Introduction to RF Linear Accelerators, in CAS School: Fifth General Accelerator Physics Course, CERN-94-01 (1994), p. 913.
- N. Pichoff, Introduction to RF Linear Accelerators, in CAS School: Basic Course on General Accelerator Physics, CERN-2005-04 (2005).
- M. Vretenar, Differences between electron and ion linacs, in CAS School: Small Accelerators, CERN-2006-012.
- M. Vretenar, Low-beta Structures, in CAS RF School, Ebeltoft 2010 (in publication).

52