

WLCG (and Rucio?) Workshop(s) @ Lancaster UK June 7-11 Nov 2022

Roger Jones

WLCG MB June 2022

WLCG and Rucio Workshops

Where is Lancaster

- The traditional county town of Lancashire in the North West of England
 - Nearest airports Manchester and Liverpool
 - Direct flights from Geneva with EasyJet and Jet2 (and flights from Paris, Munich, Frankfurt, Heathrow, Doha, JFK, Chicago.....)
 - Indirect with all major airline groups,
 - Some direct long-haul flights to Manchester
- Rail service from Manchester Airport to Lancaster (~1 hr 20 mins)
- Rail close to Liverpool airport
- With co-ordination, we can arrange affordable airport transfers by taxi

- Lancaster has a large GridPP Tier 2 and is supporting LSST production, including Rucio and Panda



Lancaster as a Town

Lancaster itself

- Compact town from the Roman invasion
- Well served with restaurants and good pubs (also bad pubs, be we can guide you!) and a brewery
- A genuine castle (law courts/bijou hotel)
- A Priory and a Cathedral
- A former port, then the linoleum capital of the world!

In images

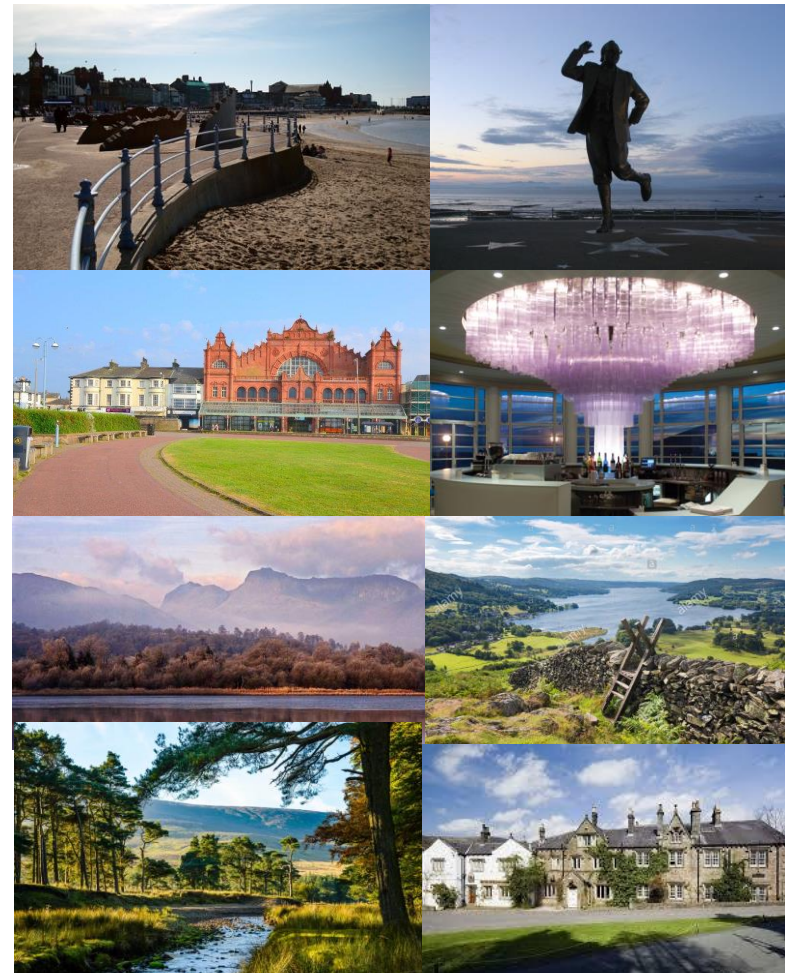


Lancaster region

In reality joined to Morecambe

- 'Fading' coastal seaside town
 - Remarkable views of Lakes
 - Many art deco buildings
 - A famous and restored hotel, which features in many TV programmes
- If you want to stay on, you can be in the heart of the Lake District and into the Forrest of Bowland in under an hour, both of which are beautiful and 'fine dining' hotspots

In images



Compact and self-contained



Best of both worlds

- Easy access to Town
- Very frequent buses, affordable taxis
- Many eating and drinking outlets (we will be in term time, so everything is open)
- Only University bar to feature in every Good Beer Guide (and 13 other bars)!

Accommodation

Pre-booked

- Up to 80 University rooms (good quality, en-suite); we are top in the 2020 Good Campus Guide, £59.40/night b&b
- 30 rooms in 4* Hotel on campus, £99/night b&b
- Other rooms available in town at a similar rate

Images



Meeting Rooms – 2 reserved

*Large ‘private dining room’,
multiple layouts and extensible
space (160 capacity)*



*Conference centre room
(attached to Lancaster House
Hotel) – 2x99*



- Small rooms (~15 people)
available in the Physics Dept

All rooms VC provisioned

Option 1 -Dinner at Midland Hotel Morecambe

*3 course Dinner, under £50;
Coach for the drive through
Lancaster to Morecambe*



Social

*Option 2 – Barker House Farm
or Lancaster House Hotel on
campus*

*We also plan an evening
reception earlier in the week
Beer may feature (!)*



Costs

Summary of expected costs

- Overall cost expected to be ~£300 head plus b&b accommodation (obviously depends a bit if 3 days or 3+2 days)
- Buffet lunch, teas, coffees, banquet dinner and reception included
- We will provide guides for food, drink and transport on other evenings

So hopefully in November

- Welcome to Lancaster!

