



Science and
Technology
Facilities Council

Resources Review Meeting: 2022Q1 ATLAS RAL

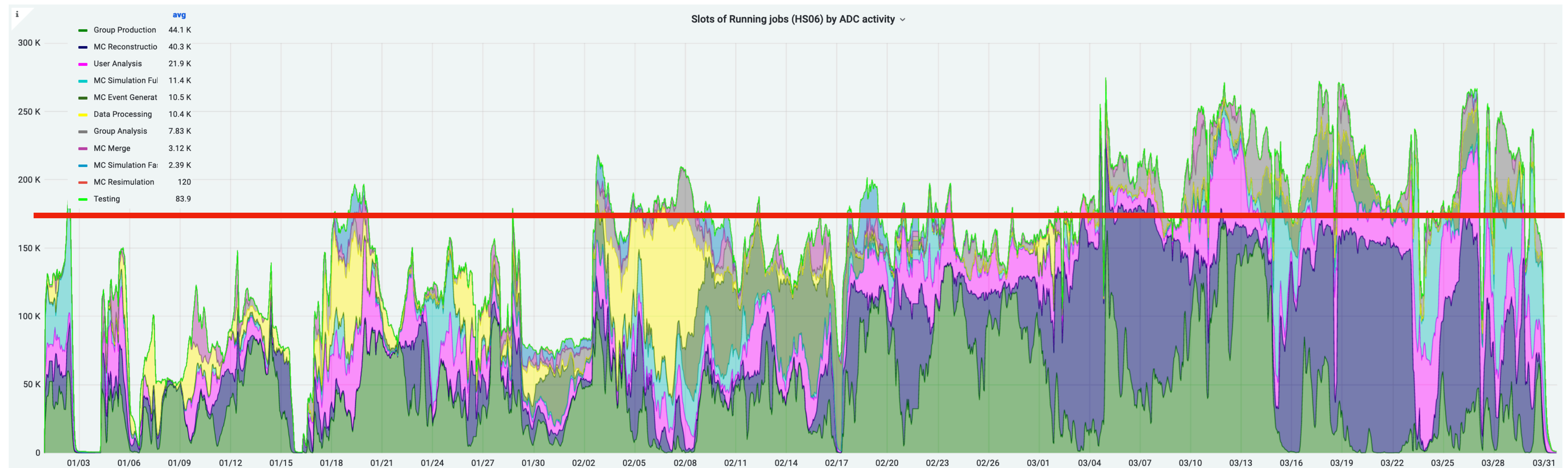
James Walder
25 05 2022

Highlights

- Reporting period:
 - Q1 2022: 1 Jan - 31 March 2022
- Migration of TAPE storage from Castor to CTA/Antares
- All ATLAS disk traffic for external transfers (TPC) (incl. multihop Tape) moved to WebDav transfers
 - Some instabilities observed; additional hardware and updated software / configuration appears to have improved situation moving into Q2
 - Further development work now anticipated to improve throughput capabilities.

CPU resource

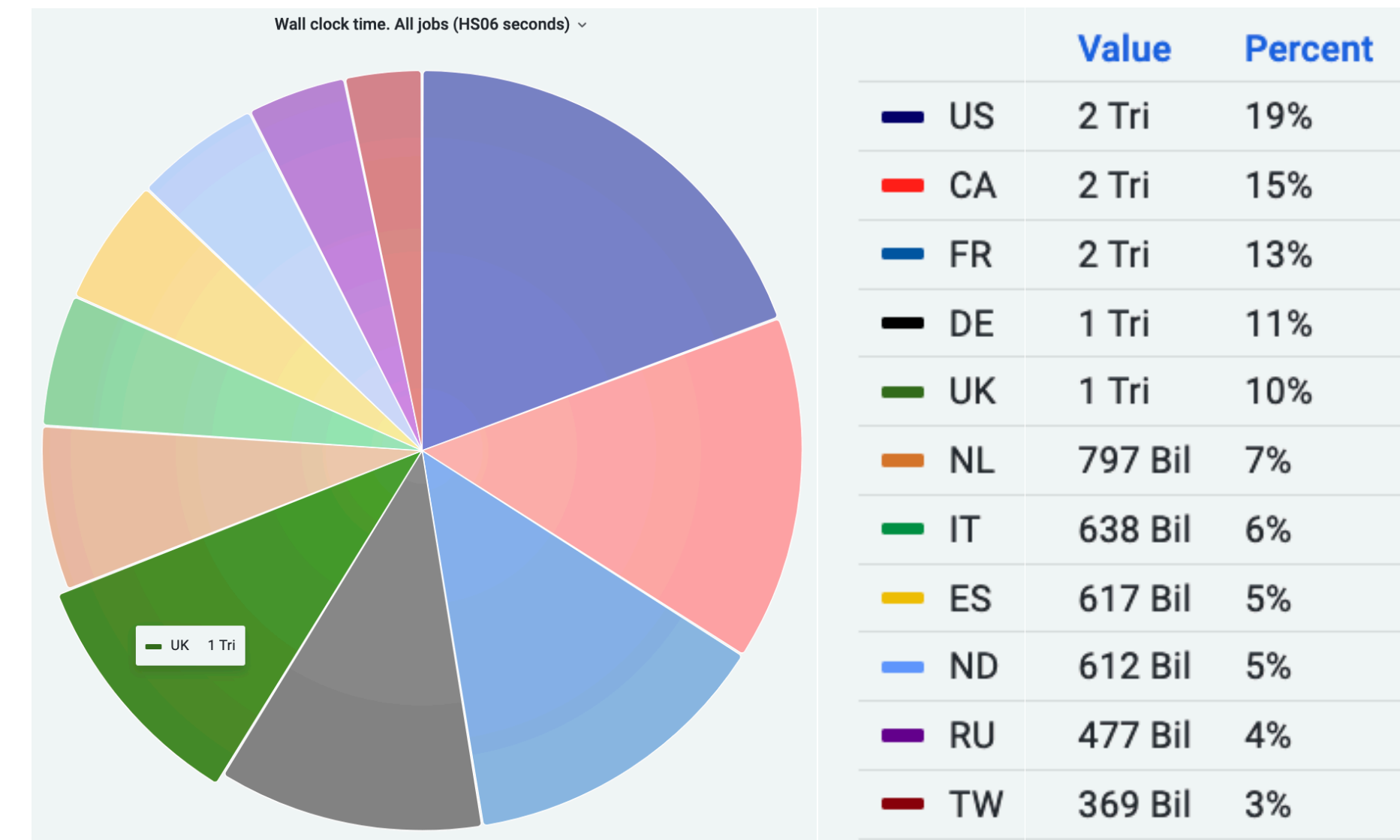
- 2021–22 pledge: 173.16 kHS06
 - Averaged reported CPU consumption 152k HS06 for Q1 period;
 - Some small uncertainty in the value due to variations of hardware running (with different Corepower values) over the period
 - Improvement towards end of period (increase of Multicore job demand), availability of full cpu capacity.
 - For Q2 moved to a Pull model of Jobs allocation, rather than push model used previously - allows for better late binding of job to the pilot (Q2 generally running at or above pledge so far).



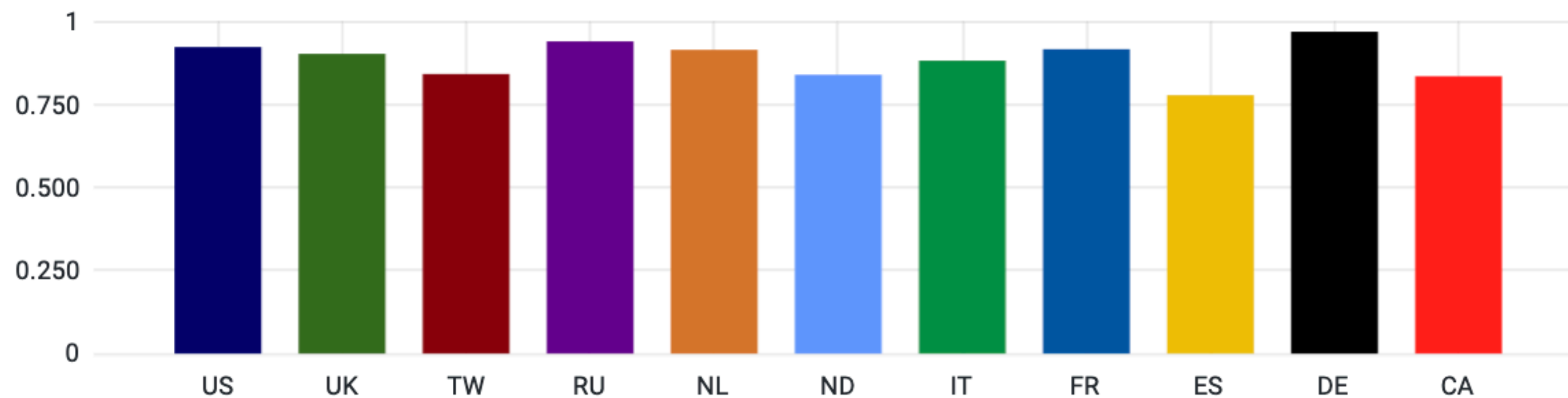
Tier-1 Comparison: CPU

- UK Tier-1 provided 10% (11%) of delivered walltime to ATLAS in the last quarter (of Tier-1 sites).
- CPU efficiency is broadly similar across the Tier-1s; (job mix variations can affect direct comparisons)
 - UK Tier-1 reports 90% CPU efficiency for Q1 period

Tier-1 CPU Walltime for period Jan '22 – Mar '22



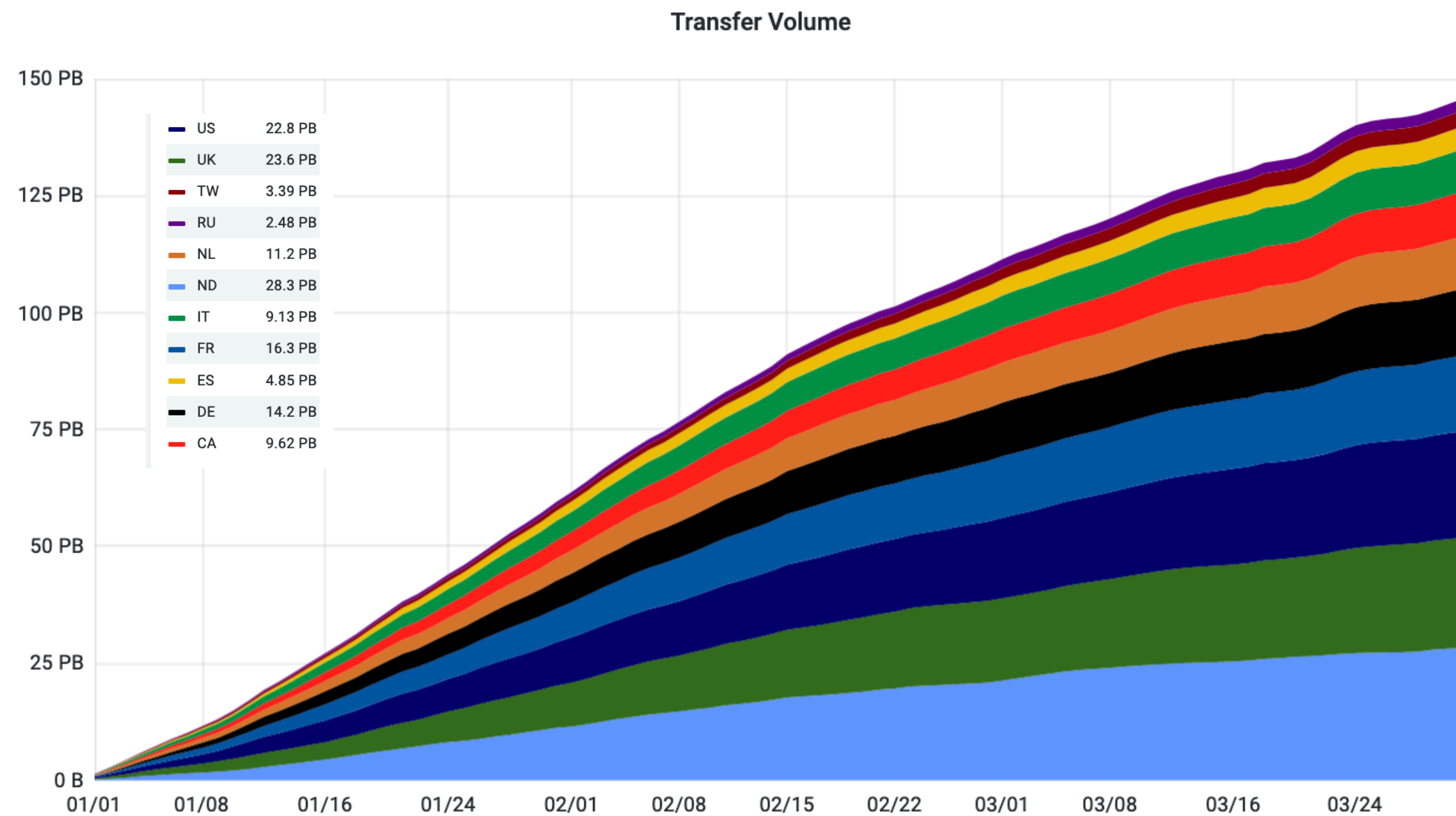
Average CPU Efficiency Good jobs



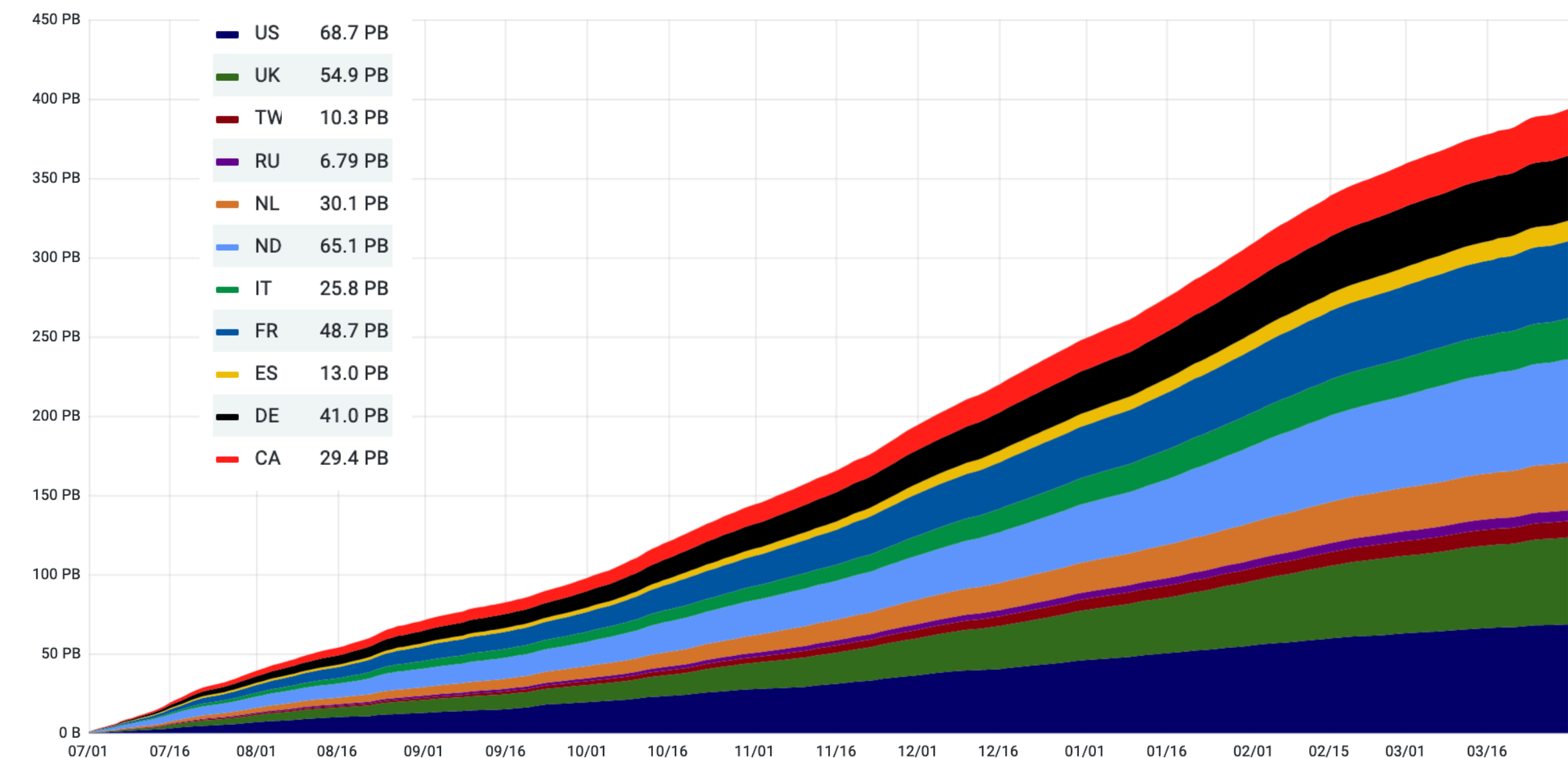
Tier-1 Comparisons: Data

- In Q1, over 23PB of data transferred into the UK Tier-1 Disk.
- In last 6 months almost 55PB transferred in to UK Tier-1 Disk

22Q1 cumulative data transfer into Tier-1 facilities

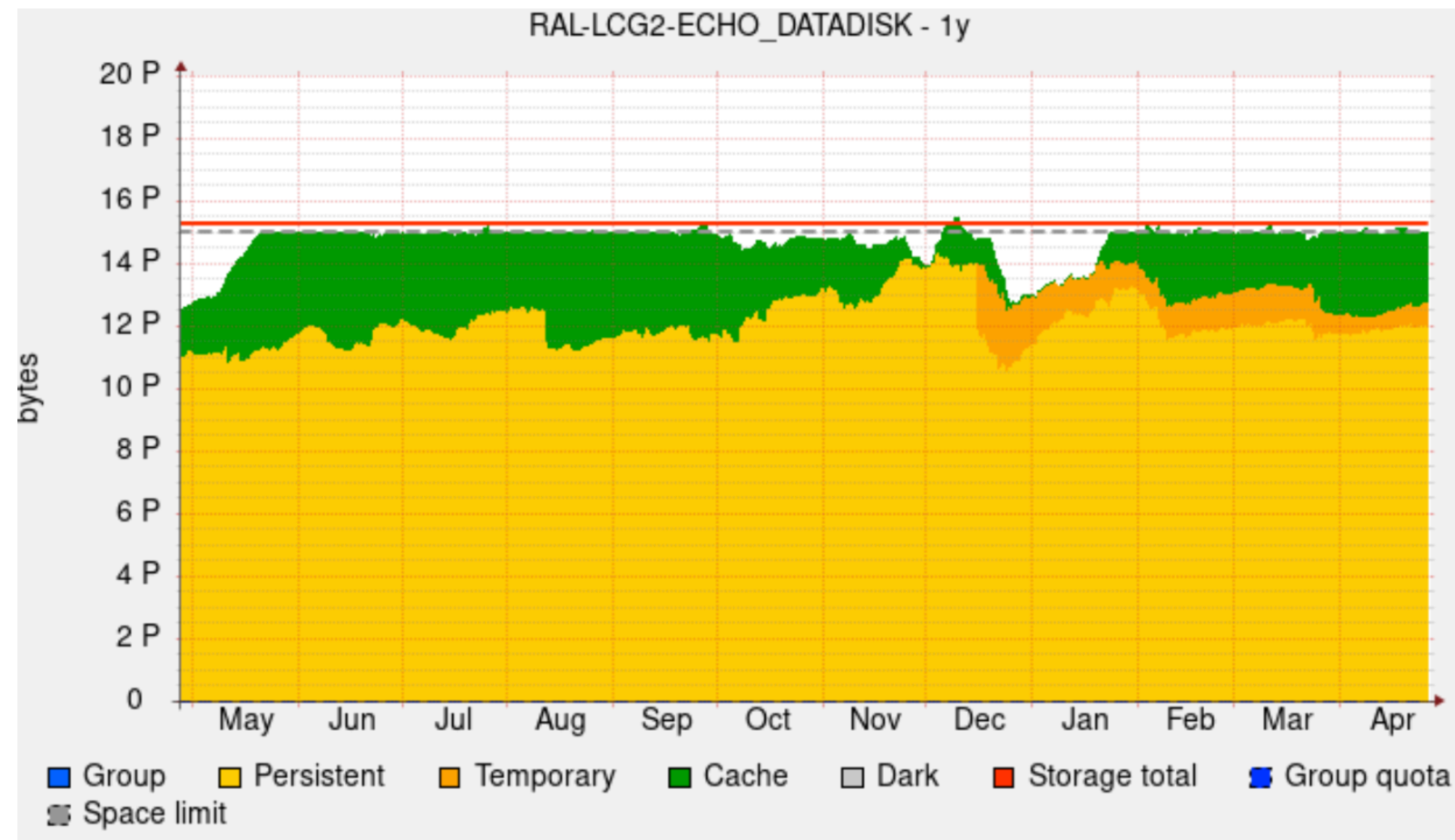


6Month cumulative data transfer into Tier-1 facilities



Tier-1 Disk Usage

- Disk, as always, remains a constrained resource.
 - 15.5PB quota (almost) always fully utilised
- In December, RAL requested to reduce capacity (i.e. by reducing cached data) to assist in rebalancing data to add new hardware for ECHO.
- New “temporary” data type now included into these plots to identify data that is eligible for removal.
- Deletion campaign started in May.
- Awaiting 2022 Disk pledge to be deployed.



Tier-1 Tape usage

- Use of Tape as archival storage and as a part of production model (via data carousel) continues:
- Currently ATLAS is using:
 - 15.2PB of Data
 - 24.0PB of MC
- 2022 pledge brought forward in Decemeber at request of ATLAS
- Migration from CASTOR to CTA (Antares) a large success
- Deletion campaign on Tape also starting in 22Q2.

